

O.D.O.T. DISTRICT 2 SURVEY OFFICE (USE ONLY)

PERSONNEL

REFERENCE NO. 14 K

SHEET 16 OF 22

NOTES AUBLE

DATE 5/19/21

ROUTE SR 19

H.C. O'DONNELL

WEATHER FAIR

COUNTY SANDUSKY

R.C. NIESE

TEMP. 65°

TOWNSHIP SANDUSKY

SECTION 21

DWG BY NIESE PID 94329

T 5 N R 15 E

TYPE MONUMENT MONBOX

ON SURFACE - ~~BELOW~~ ON

OFFSET ☉ PAVEMENT ON LT : RT

- TO - EDGE PAVEMENT

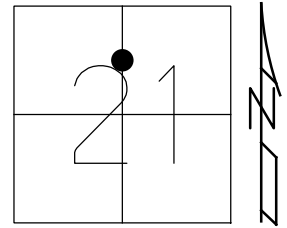
STATION: 622+02.06

HORIZ.DATUM: NAD83 (2011)

GEOID: NAVD88 2018

GRID: NORTHING: 625572.423

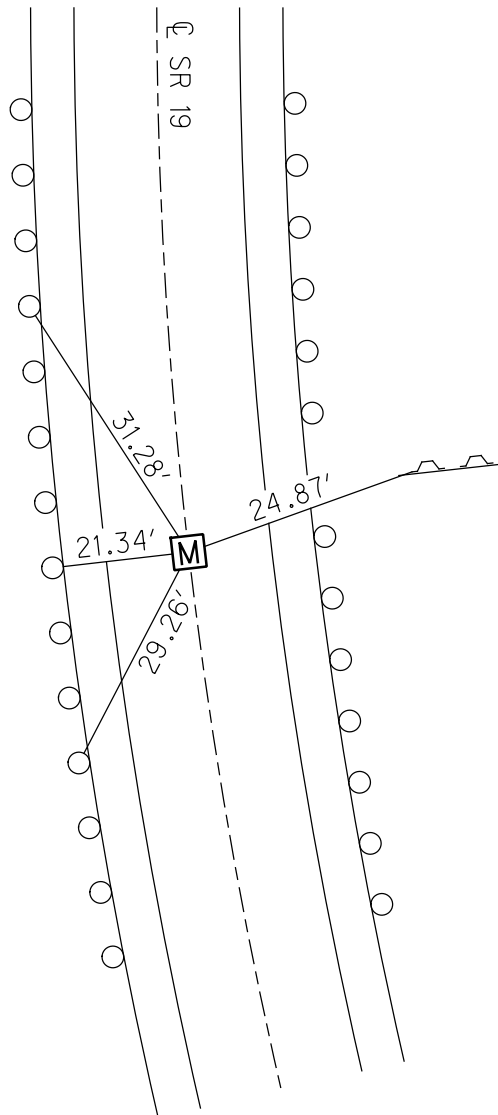
EASTING: 1793853.610



RECORD:  
P.C.C. OF R/W  
STA 150+86.04  
FD MONBOX  
8/30/71  
FD MONBOX  
SHOT LID  
REFK14  
5/19/21, DSA  
1/5/23, TDN

RECORD TIES  
8/26/71

SHI IN  
G.R. POSTS

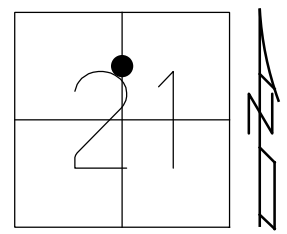


1.3' UP ON  
"CHRISTY RD"  
SIGN POST

O.D.O.T. DISTRICT 2 SURVEY OFFICE (USE ONLY)

PERSONNEL \_\_\_\_\_ REFERENCE NO. 14 K SHEET 16 OF 22  
 NOTES AUBLE DATE 5/19/21 ROUTE SR 19  
 H.C. O'DONNELL WEATHER FAIR COUNTY SANDUSKY  
 R.C. NIESE TEMP. 65° TOWNSHIP SANDUSKY  
 SECTION 21  
 DWG BY NIESE PID 94329 T 5 N R 15 E

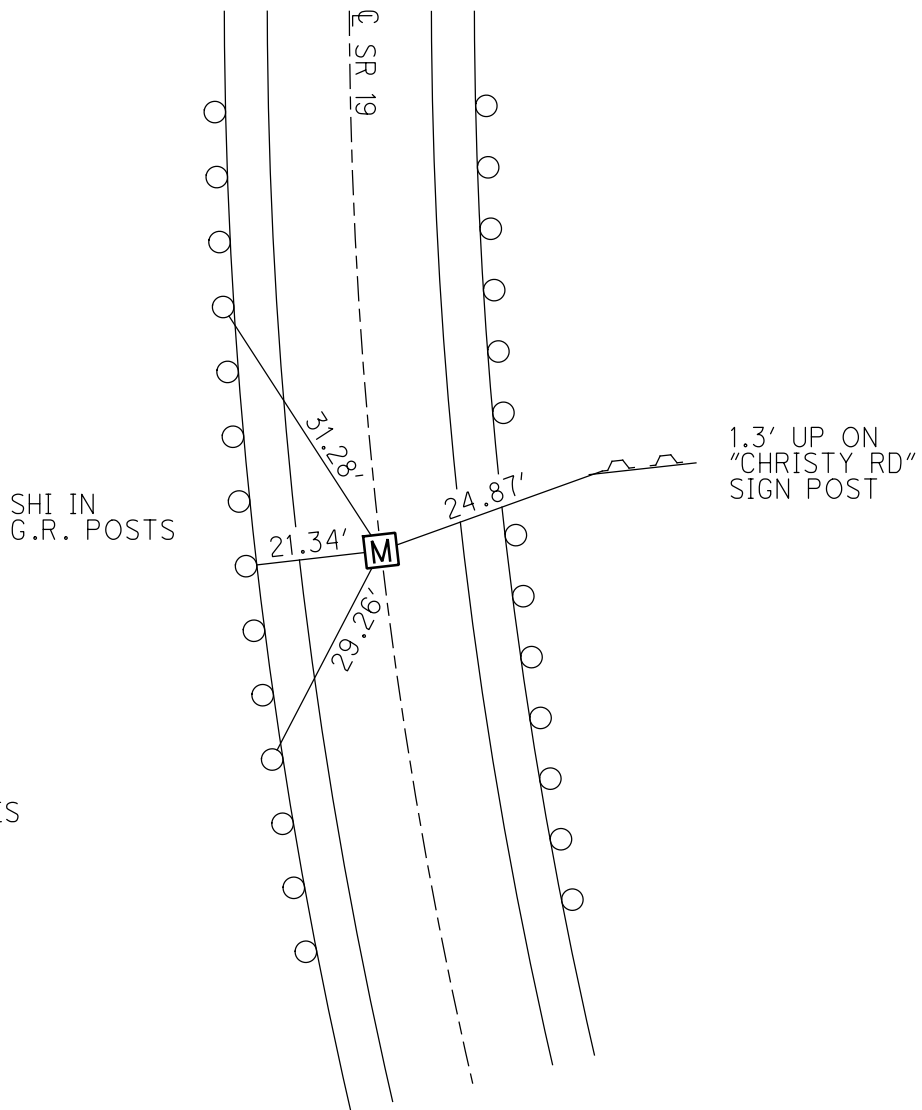
TYPE MONUMENT MONBOX  
 ON SURFACE - ~~BELOW~~ ON  
 OFFSET ☐ PAVEMENT ON LT : RT  
- TO - EDGE PAVEMENT  
 STATION: 622+02.06



HORIZ.DATUM: NAD83 (2011) GEOID: 18  
 GRID: NORTHING: 625572.423 EASTING: 1793853.610

RECORD:  
 P.C.C. OF R/W  
 STA 150+86.04  
 FD MONBOX  
 8/30/71  
 FD MONBOX  
 SHOT LID  
 REFK14  
 5/19/21, DSA

RECORD TIES  
 8/26/71



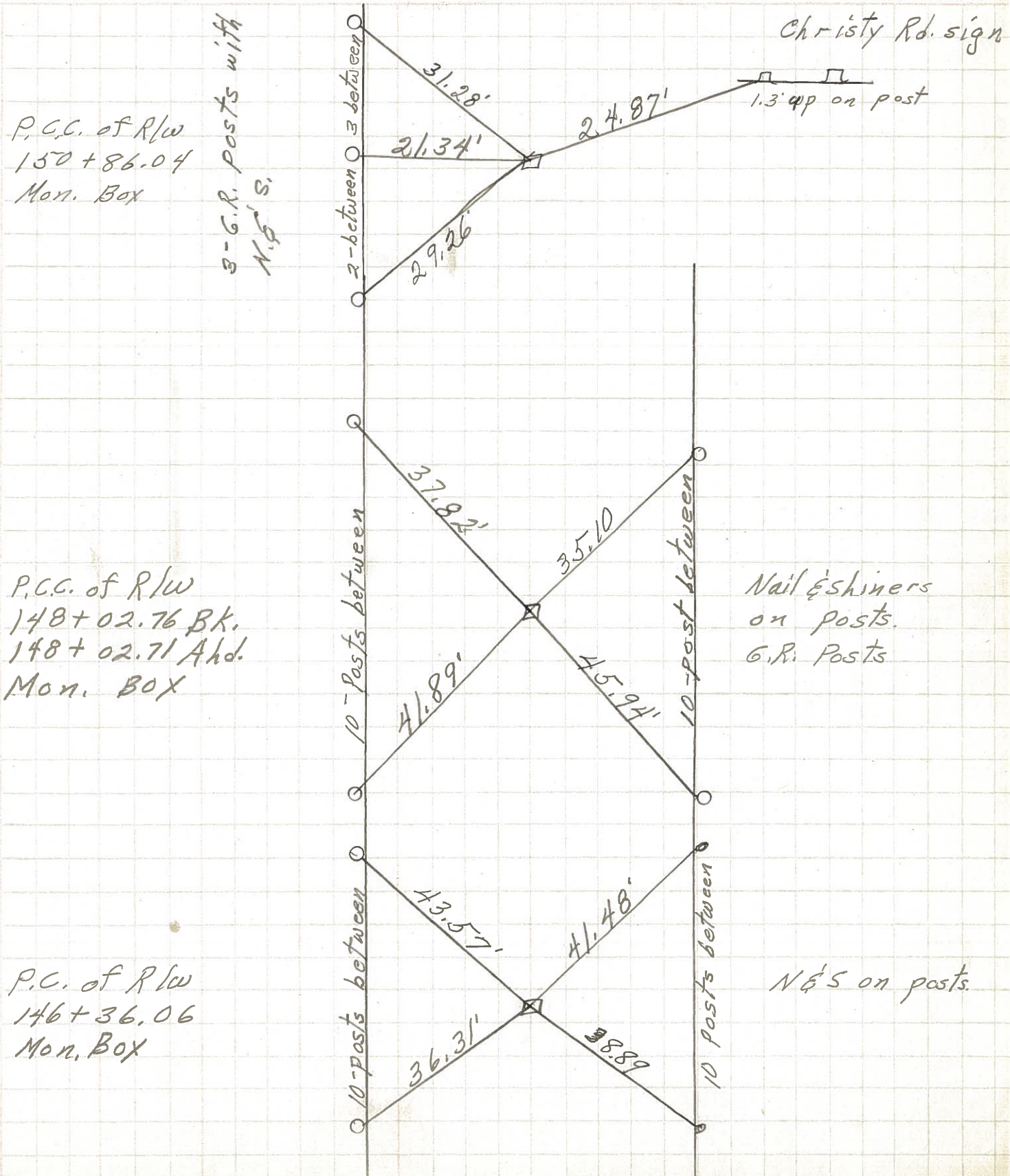
PERSONNEL TITLE PERSONNEL TITLE

COUNTY Sandusky DATE 8-30-71

S. R. 19 WEATHER Hot

SEC. 21 TEMP. 85°

DESCRIPTION U.S. #20 to Ottawa, Co. Line LEFT CENTER LINE RIGHT JOB NO.



P.C.C. of R/W  
150 + 86.04  
Mon. Box

P.C.C. of R/W  
148 + 02.76 BK.  
148 + 02.71 Ahd.  
Mon. BOX

P.C. of R/W  
146 + 36.06  
Mon. Box

Nail & shiners  
on posts.  
G.R. Posts

N.E.'s on posts.