

O.D.O.T. DISTRICT 2 SURVEY OFFICE (USE ONLY)

PERSONNEL \_\_\_\_\_

REFERENCE NO. 15

SHEET 19 OF 22

NOTES AUBLE

DATE 5/19/21

ROUTE SR 19

H.C. O'DONNELL

WEATHER FAIR

COUNTY SANDUSKY

R.C. NIESE

TEMP. 65°

TOWNSHIP SANDUSKY

DWG BY NIESE

PID 94329

SECTION 21

T 5 N R 12 E

TYPE MONUMENT MONBOX

ON SURFACE - ~~BELOW~~ ON

OFFSET ☉ PAVEMENT ON LT : RT

- TO - EDGE PAVEMENT

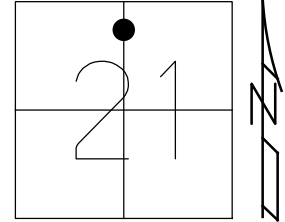
STATION: 627+51.06

HORIZ.DATUM: NAD83 (2011)

GEOID: NAVD88 2018

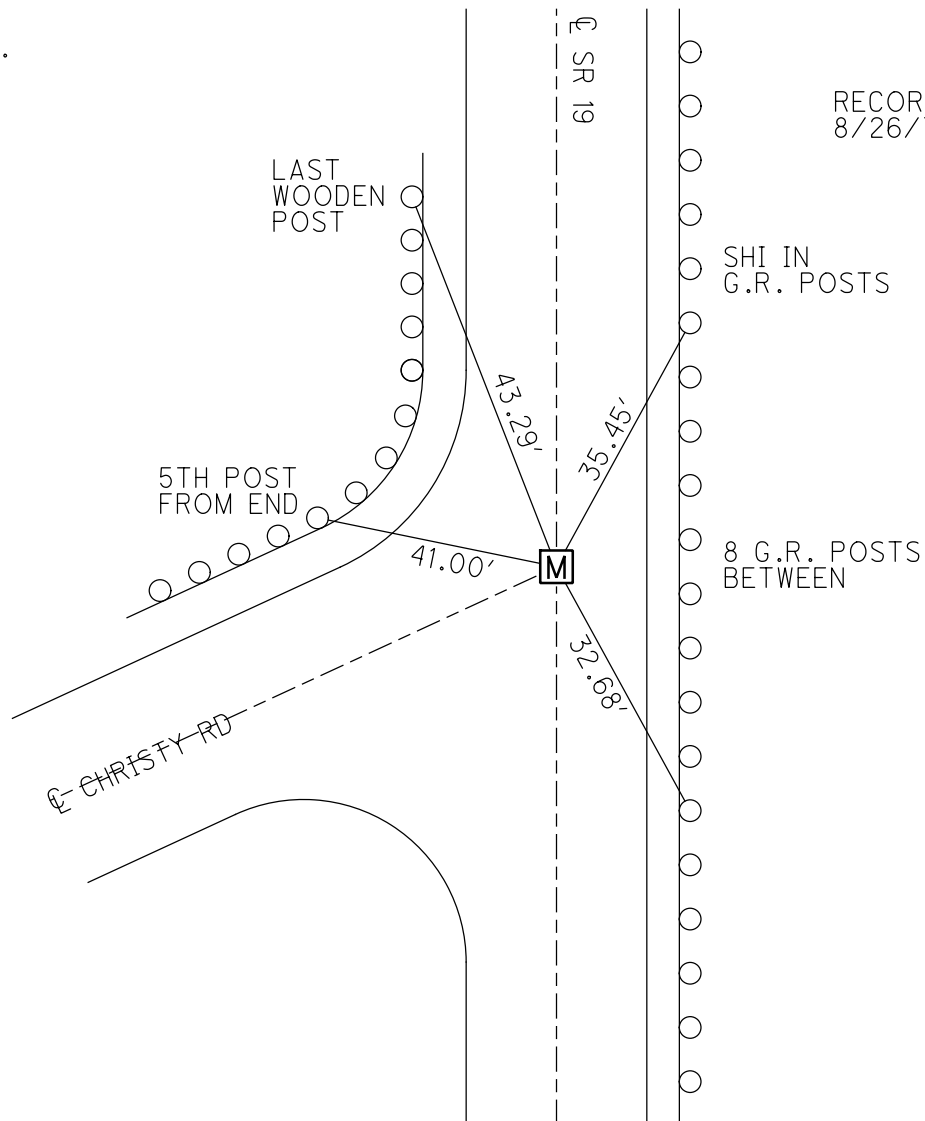
GRID: NORTHING: 626071.062

EASTING: 1793857.596



RECORD: P.O.T.  
 STA 156+98.93  
 FD MONBOX  
 8/30/71  
 FD MONBOX  
 SHOT LID  
 5/19/21, DSA  
 1/5/23, TDN

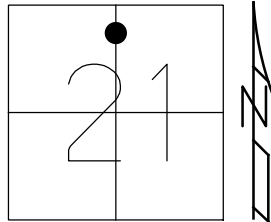
RECORD TIES  
 8/26/71



O.D.O.T. DISTRICT 2 SURVEY OFFICE (USE ONLY)

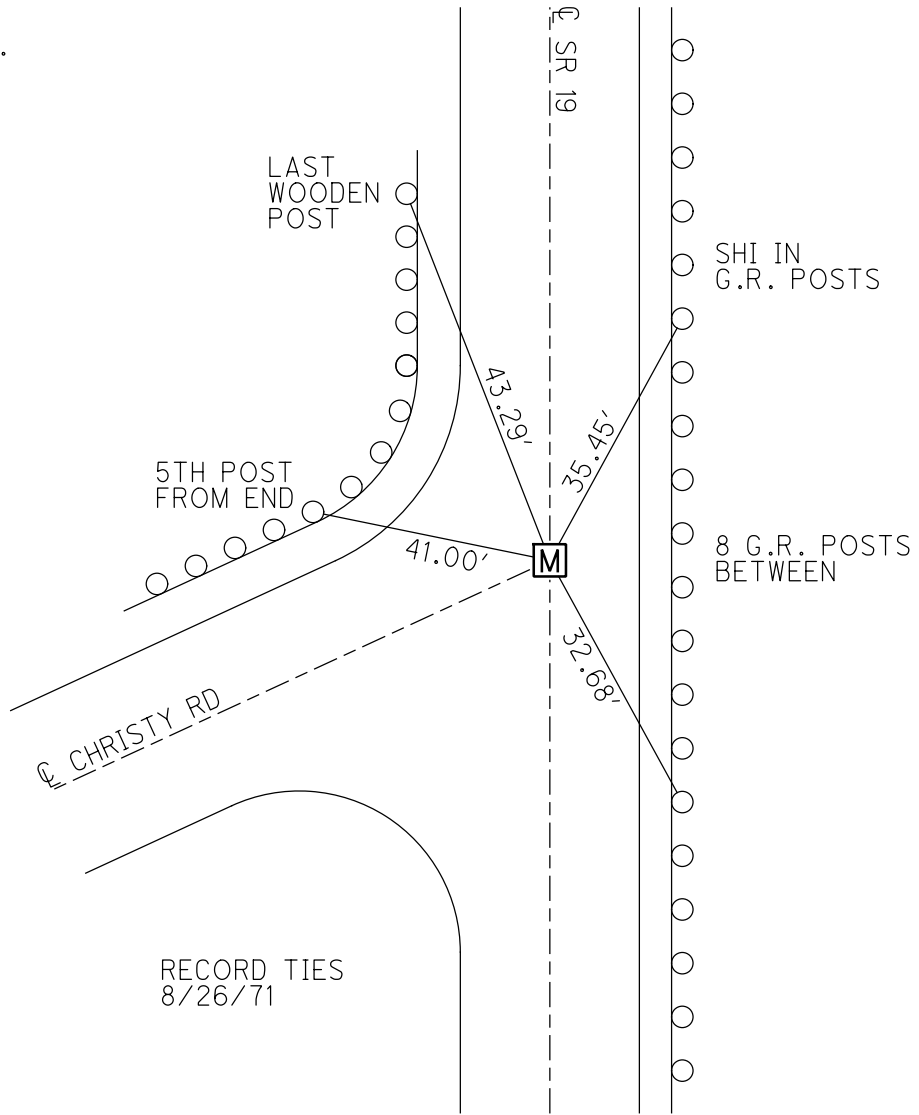
PERSONNEL \_\_\_\_\_ REFERENCE NO. 15 SHEET 19 OF 22  
 NOTES AUBLE DATE 5/19/21 ROUTE SR 19  
 H.C. O'DONNELL WEATHER FAIR COUNTY SANDUSKY  
 R.C. NIESE TEMP. 65° TOWNSHIP SANDUSKY  
 DWG BY NIESE PID 94329 SECTION 21  
 T 5 N R 12 E

TYPE MONUMENT MONBOX  
 ON SURFACE - ~~BELOW~~ ON  
 OFFSET  $\varnothing$  PAVEMENT ON LT : RT  
     TO      EDGE PAVEMENT  
 STATION: 627+51.06



HORZ.DATUM: NAD83 (2011) GEOID: 18  
 GRID: NORTHING: 626071.062 EASTING: 1793857.596

RECORD: P.O.T.  
 STA 156+98.93  
 FD MONBOX  
 8/30/71  
 FD MONBOX  
 SHOT LID  
 5/19/21, DSA



PERSONNEL	TITLE	PERSONNEL	TITLE
COUNTY <u>Sandusky</u> DATE <u>8-30-71</u>			
S. R. <u>19</u> WEATHER <u>Hot</u>			
SEC. <u>21</u> TEMP. <u>85°</u>			
DESCRIPTION <u>U.S. # 20 to Ottawa, Co. Line</u> JOB NO. _____			

