

O.D.O.T. DISTRICT 2 SURVEY OFFICE (USE ONLY)

PERSONNEL

REFERENCE NO. 16

SHEET 21 OF 22

NOTES AUBLE DATE 5/19/21  
 H.C. O'DONNELL WEATHER FAIR  
 R.C. NIESE TEMP. 65°

ROUTE SR 19  
 COUNTY SANDUSKY  
 TOWNSHIP SANDUSKY  
 SECTION 21

DWG BY NIESE PID 94329

T 5 N R 12 E

TYPE MONUMENT MONBOX W/1" IPIN

ON SURFACE - ~~BELOW~~ ON

OFFSET  $\odot$  PAVEMENT ON LT : RT

- TO - EDGE PAVEMENT

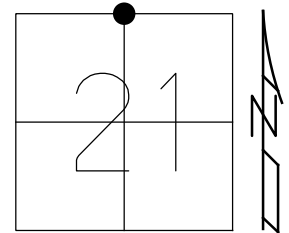
STATION: 635+23.80

HORZ. DATUM: NAD83 (2011)

GEOID: \_\_\_\_\_

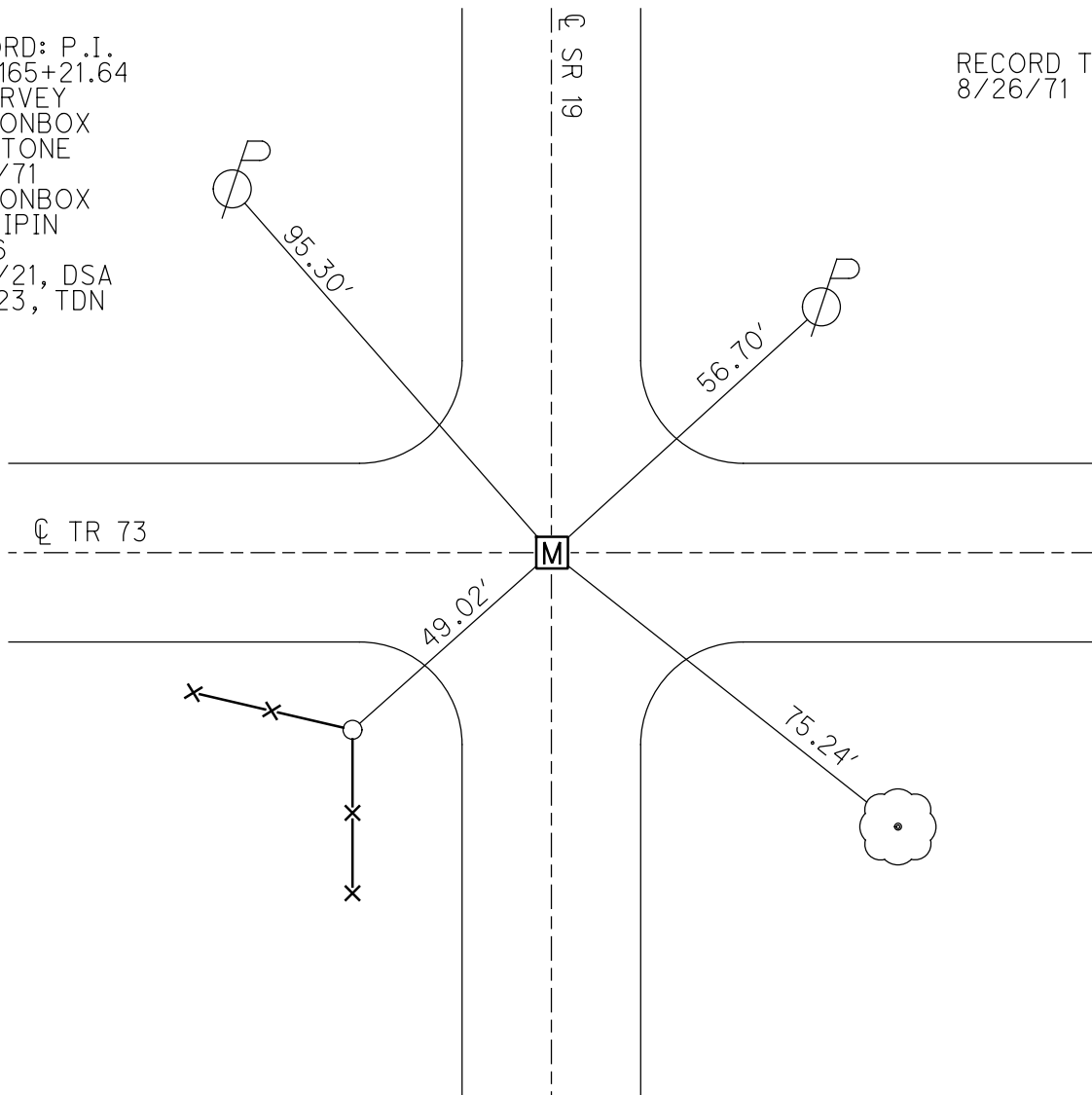
GRID: NORTHING: 626893.513

EASTING: 1793877.059



RECORD: P.I.  
 STA 165+21.64  
 $\odot$  SURVEY  
 FD MONBOX  
 W/ STONE  
 8/31/71  
 FD MONBOX  
 W/1" IPIN  
 REF16  
 5/19/21, DSA  
 1/5/23, TDN

RECORD TIES  
 8/26/71



O.D.O.T. DISTRICT 2 SURVEY OFFICE (USE ONLY)

PERSONNEL

REFERENCE NO. 16

SHEET 21 OF 22

NOTES AUBLE

DATE 5/19/21

ROUTE SR 19

H.C. O'DONNELL

WEATHER FAIR

COUNTY SANDUSKY

R.C. NIESE

TEMP. 65°

TOWNSHIP SANDUSKY

DWG BY NIESE PID 94329

SECTION 21

T 5 N R 12 E

TYPE MONUMENT MONBOX W/1" IPIN

ON SURFACE - ~~BELOW~~ ON

OFFSET ☐ PAVEMENT ON LT : RT

- TO - EDGE PAVEMENT

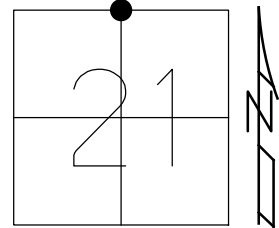
STATION: 635+23.80

HORIZ.DATUM: NAD83 (2011)

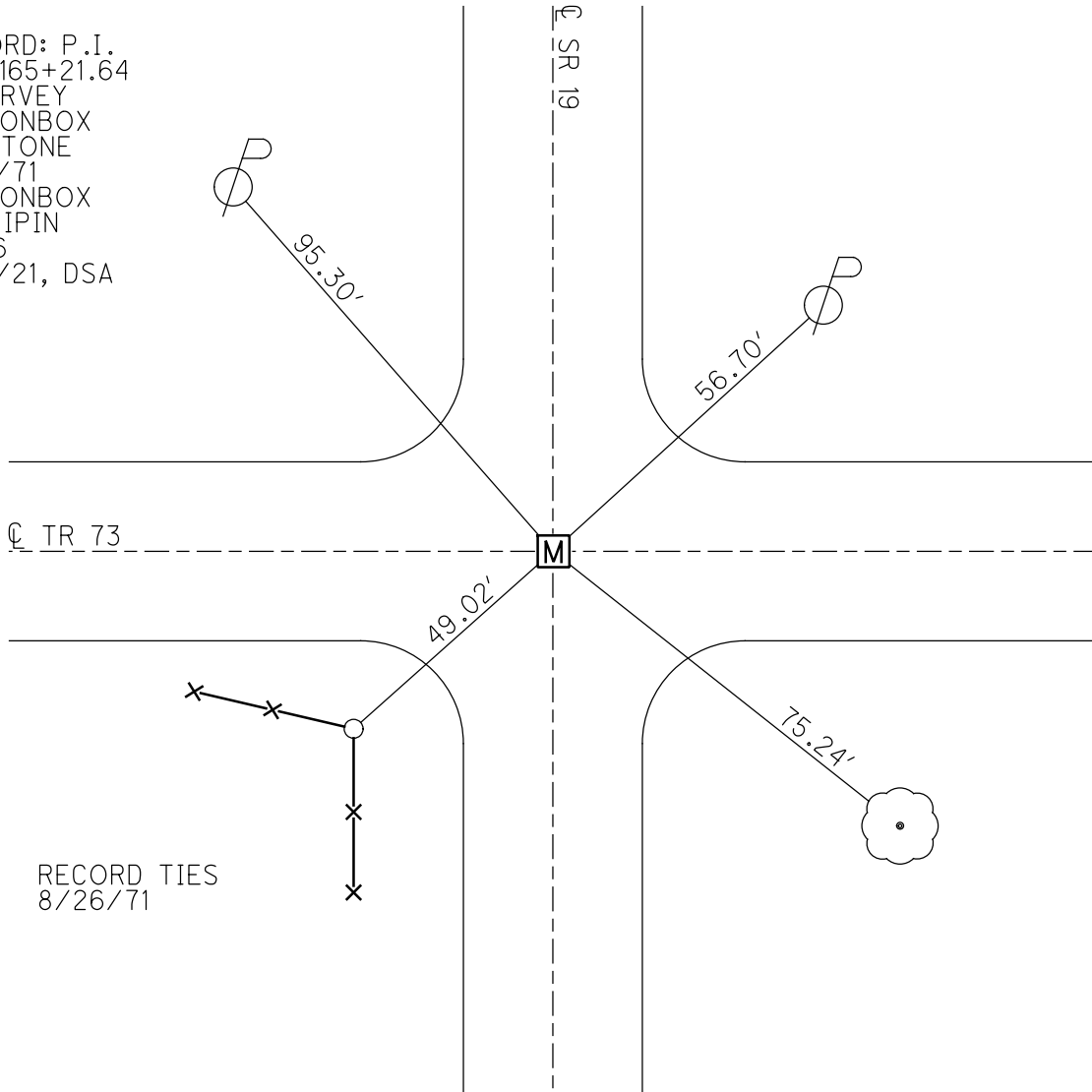
GEOID: 18

GRID: NORTHING: 626893.513

EASTING: 1793877.059



RECORD: P.I.  
 STA 165+21.64  
 ☐ SURVEY  
 FD MONBOX  
 W/ STONE  
 8/31/71  
 FD MONBOX  
 W/1" IPIN  
 REF16  
 5/19/21, DSA



RECORD TIES  
 8/26/71

PERSONNEL TITLE PERSONNEL TITLE

COUNTY Sandusky DATE 8-31-71

S. R. 19 WEATHER Fair

SEC. 21 & 16 TEMP. 75°

DESCRIPTION U.S. # 20 to Ottawa Co. Line LEFT CENTER LINE RIGHT JOB NO.

