

O.D.O.T. DISTRICT 2 SURVEY OFFICE (USE ONLY)

PERSONNEL

REFERENCE NO. 16 A

SHEET 22 OF 22

NOTES AUBLE

DATE 5/19/21

ROUTE SR 19

H.C. O'DONNELL

WEATHER FAIR

COUNTY SANDUSKY

R.C. NIESE

TEMP. 65°

TOWNSHIP SANDUSKY

DWG BY NIESE PID 94329

SECTION 16

T 5 N R 12 E

TYPE MONUMENT MONBOX W/STONE

ON SURFACE - ~~BELOW~~ ON

OFFSET Q PAVEMENT ON LT : RT

- TO - EDGE PAVEMENT

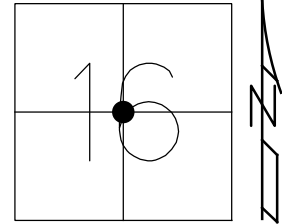
STATION: 661+93.21

HORZ. DATUM: NAD83 (2011)

GEOID: _____

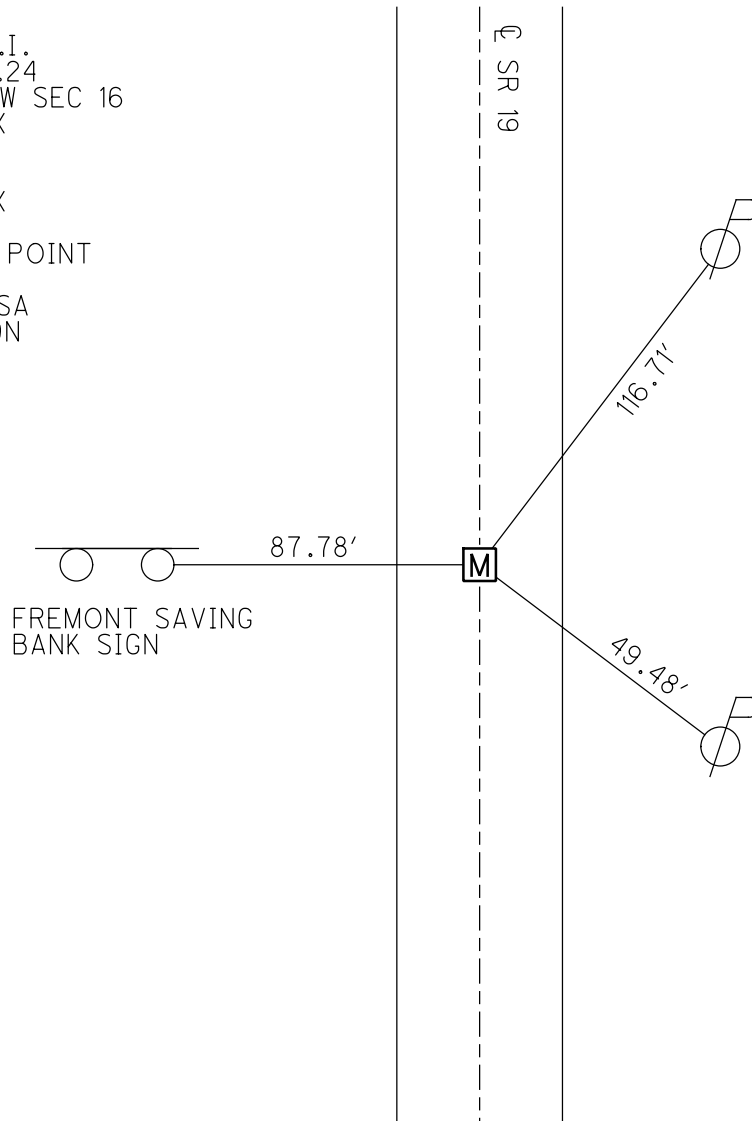
GRID: NORTHING: 629561.981

EASTING: 1793950.430



RECORD: P.I.
 STA 191+91.24
 CENTER E&W SEC 16
 FD MONBOX
 W/ STONE
 8/31/71
 FD MONBOX
 W/STONE
 SHOT HIGH POINT
 REFA16
 5/19/21, DSA
 1/5/23, TDN

RECORD TIES
 8/26/71



O.D.O.T. DISTRICT 2 SURVEY OFFICE (USE ONLY)

PERSONNEL

REFERENCE NO. 16 A

SHEET 22 OF 22

NOTES AUBLE

DATE 5/19/21

ROUTE SR 19

H.C. O'DONNELL

WEATHER FAIR

COUNTY SANDUSKY

R.C. NIESE

TEMP. 65°

TOWNSHIP SANDUSKY

DWG BY NIESE PID 94329

SECTION 16

T 5 N R 12 E

TYPE MONUMENT MONBOX W/STONE

ON SURFACE - ~~BELOW~~ ON

OFFSET Q PAVEMENT ON LT : RT

- TO - EDGE PAVEMENT

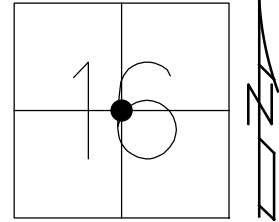
STATION: 661+93.21

HORZ.DATUM: NAD83 (2011)

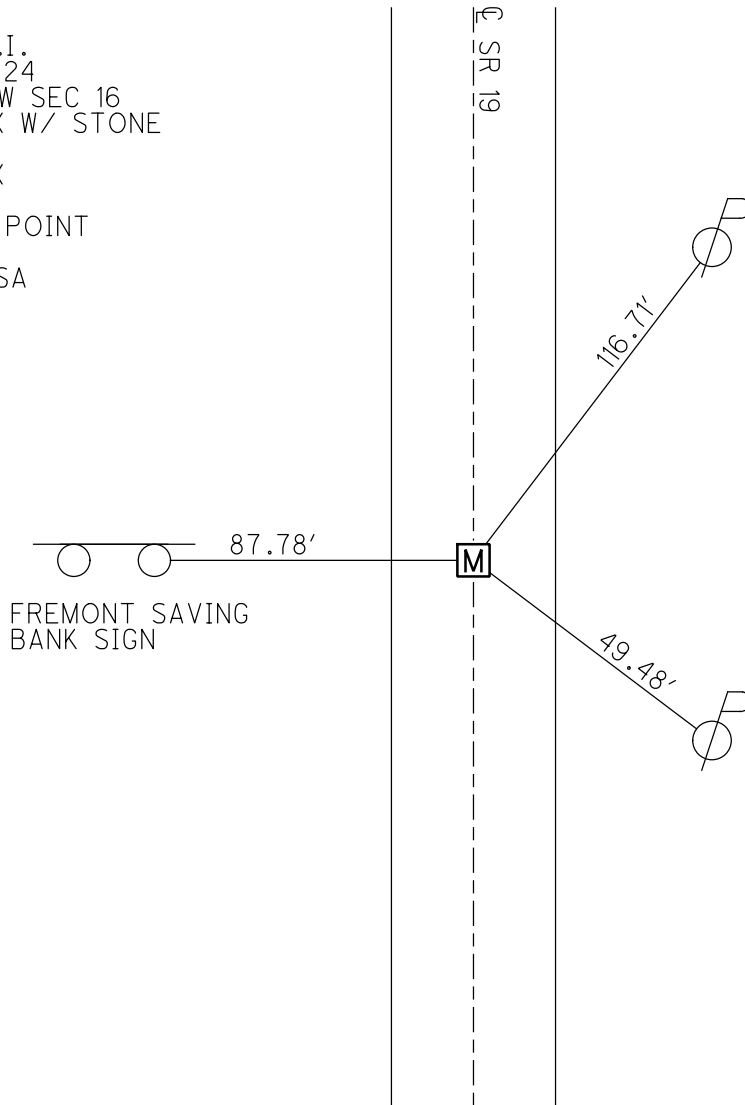
GEOID: 18

GRID: NORTHING: 629561.981

EASTING: 1793950.430



RECORD: P.I.
 STA 191+91.24
 CENTER E&W SEC 16
 FD MONBOX W/ STONE
 8/31/71
 FD MONBOX
 W/ STONE
 SHOT HIGH POINT
 REFA16
 5/19/21, DSA



RECORD TIES
 8/26/71

PERSONNEL TITLE PERSONNEL TITLE

COUNTY Sandusky DATE 8-31-71

S. R. 19 WEATHER Fair

SEC. 21 & 16 TEMP. 75°

DESCRIPTION U.S. # 20 to Ottawa Co. Line JOB NO. _____

