

O.D.O.T. DISTRICT 2 SURVEY OFFICE (USE ONLY)

PERSONNEL

REFERENCE NO. 17

SHEET 1 OF 17

NOTES ROUSOS

DATE 4/10/02

ROUTE SR 19

H.C. HOMAN

WEATHER SUNNY

COUNTY SANDUSKY

R.C. ROUSOS

TEMP. 50°

TOWNSHIP SANDUSKY

SECTION 16

DWG BY AUBLE PID 107060

T 5 N R 15 E

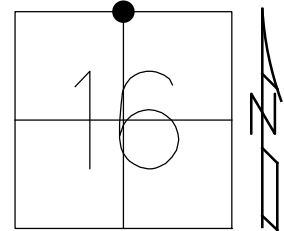
TYPE MONUMENT P.K.NAIL

~~ON SURFACE~~ - BELOW 4"

OFFSET CL PAVEMENT 3.8' ~~±~~ : RT

- TO - EDGE PAVEMENT

STATION: 687+85



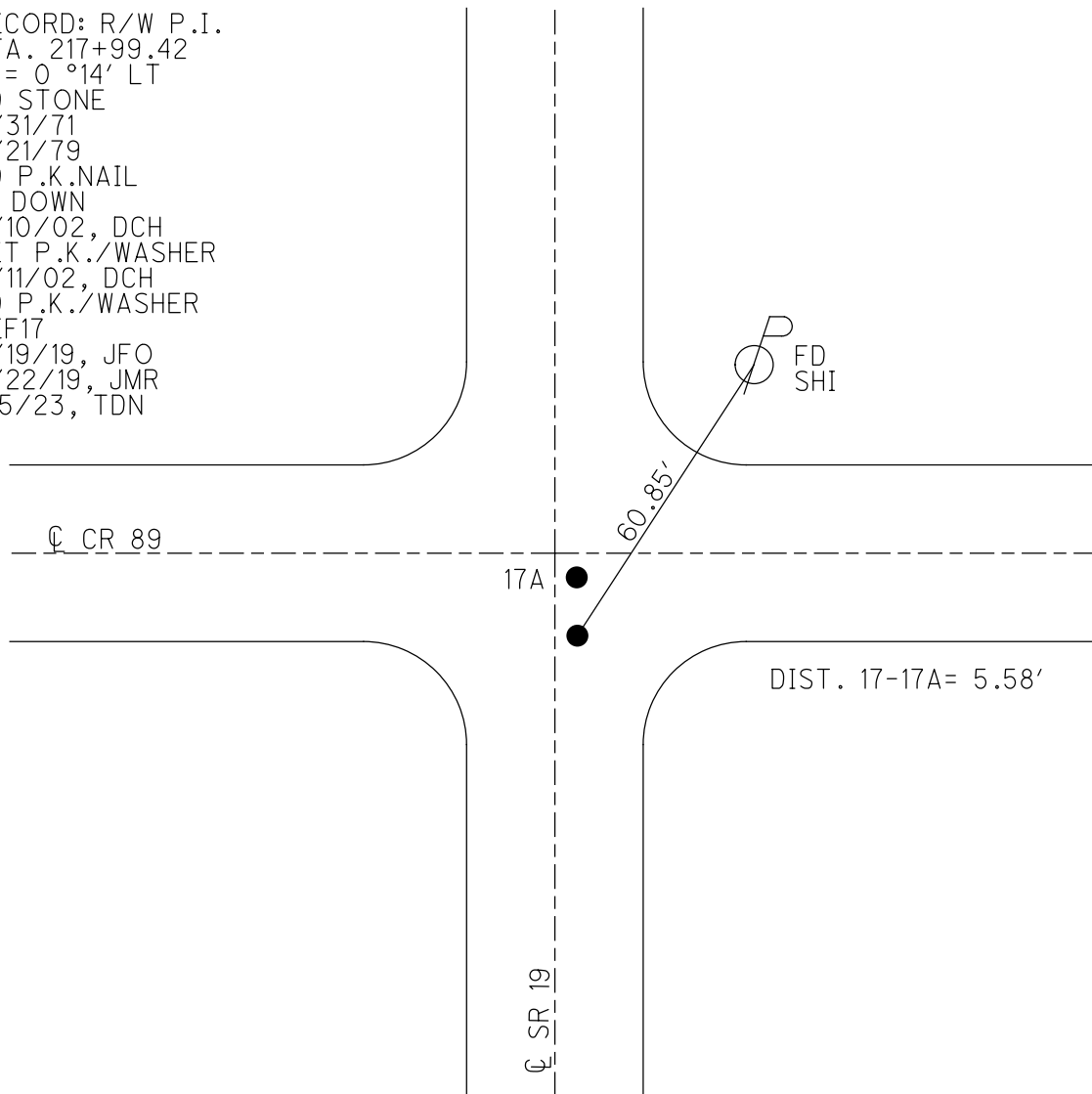
HORZ.DATUM: NAD83 (2011)

GEOID: NAVD88 2012A

GRID: NORTHING: 632169.408

EASTING: 1794024.239

RECORD: R/W P.I.
 STA. 217+99.42
 $\Delta = 0^\circ 14' \text{ LT}$
 FD STONE
 8/31/71
 8/21/79
 FD P.K.NAIL
 4" DOWN
 4/10/02, DCH
 SET P.K./WASHER
 6/11/02, DCH
 FD P.K./WASHER
 REF17
 3/19/19, JFO
 8/22/19, JMR
 1/5/23, TDN



O.D.O.T. DISTRICT 2 SURVEY OFFICE (USE ONLY)

PERSONNEL

REFERENCE NO. 17

SHEET 1 OF 16

NOTES ROUSOS

DATE 4/10/02

ROUTE SR 19

H.C. HOMAN

WEATHER SUNNY

COUNTY SANDUSKY

R.C. ROUSOS

TEMP. 50°

TOWNSHIP SANDUSKY

DWG BY AUBLE PID 107060

SECTION 16

T 5 N R 15 E

TYPE MONUMENT P.K.NAIL

~~ON SURFACE~~ - BELOW 4"

OFFSET \odot PAVEMENT 3.8' $\overline{\text{TT}}$: RT

- TO - EDGE PAVEMENT

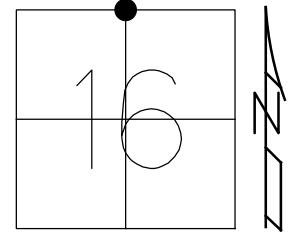
STATION: 687+85

HORIZ.DATUM: NAD83 (2011)

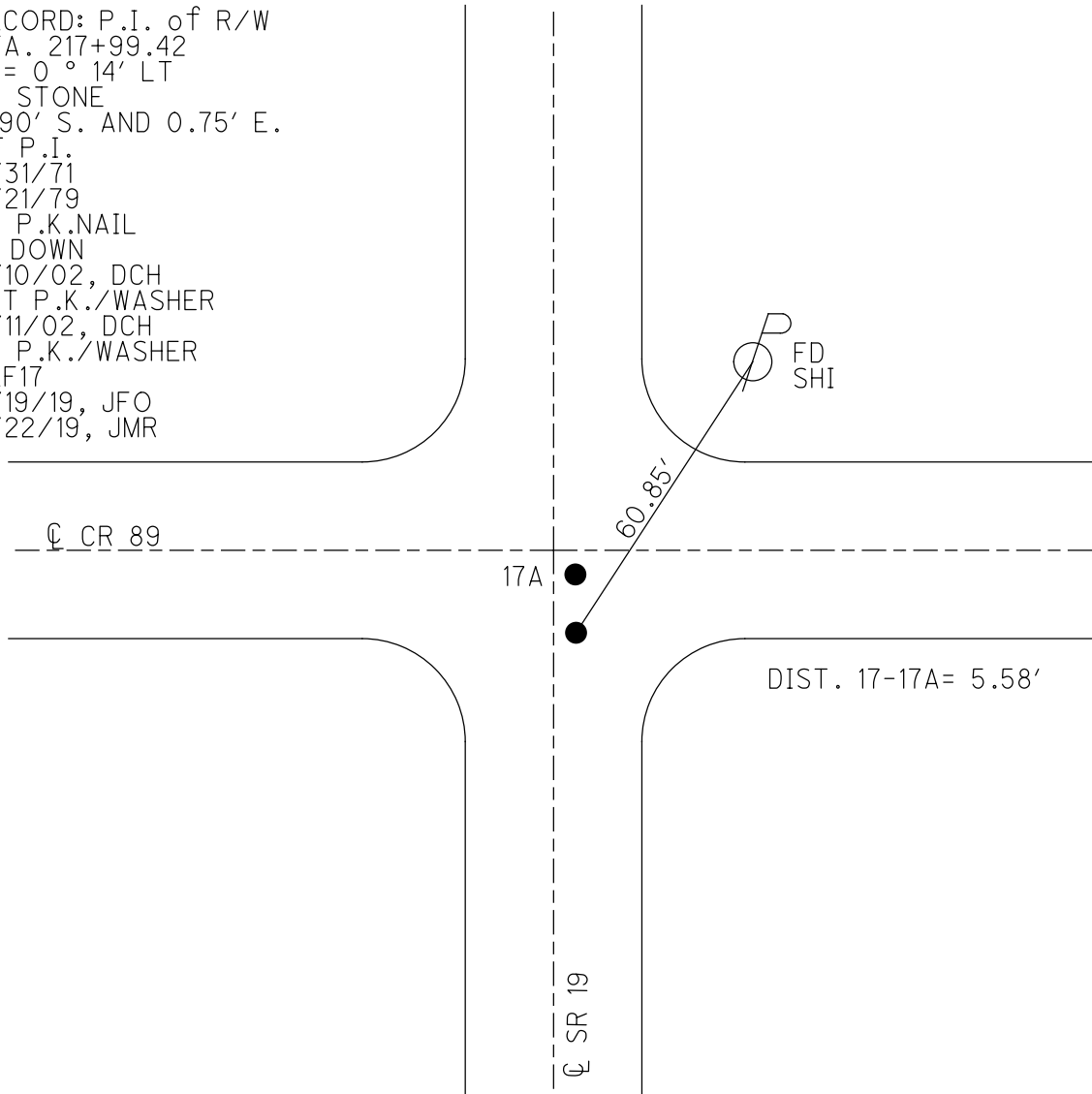
GEOID: 2012A

GRID: NORTHING: 632169.408

EASTING: 1794024.239



RECORD: P.I. of R/W
 STA. 217+99.42
 $\Delta = 0^\circ 14' \text{ LT}$
 FD STONE
 5.90' S. AND 0.75' E.
 OF P.I.
 8/31/71
 8/21/79
 FD P.K.NAIL
 4" DOWN
 4/10/02, DCH
 SET P.K./WASHER
 6/11/02, DCH
 FD P.K./WASHER
 REF17
 3/19/19, JFO
 8/22/19, JMR



\odot SR 19

O.D.O.T. DISTRICT 2 SURVEY OFFICE

PERSONNEL

REFERENCE NO. _____

SHEET 1 OF 3

NOTES Rousos

DATE 04-10-02

ROUTE SR 19

H.C. Homan

WEATHER Sunny

COUNTY Sandusky

R.C. Rousos

TEMP. 50°

TOWNSHIP Sandusky

SECTION 9

T 5 N R 15 E

TYPE MONUMENT A: Iron Pin; B PK

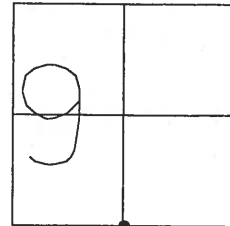
~~ON SURFACE - BELOW~~ A: 2"; B: 4"

~~LEFT - C PAV'T - RIGHT~~ A: 3'; B: 3.8'

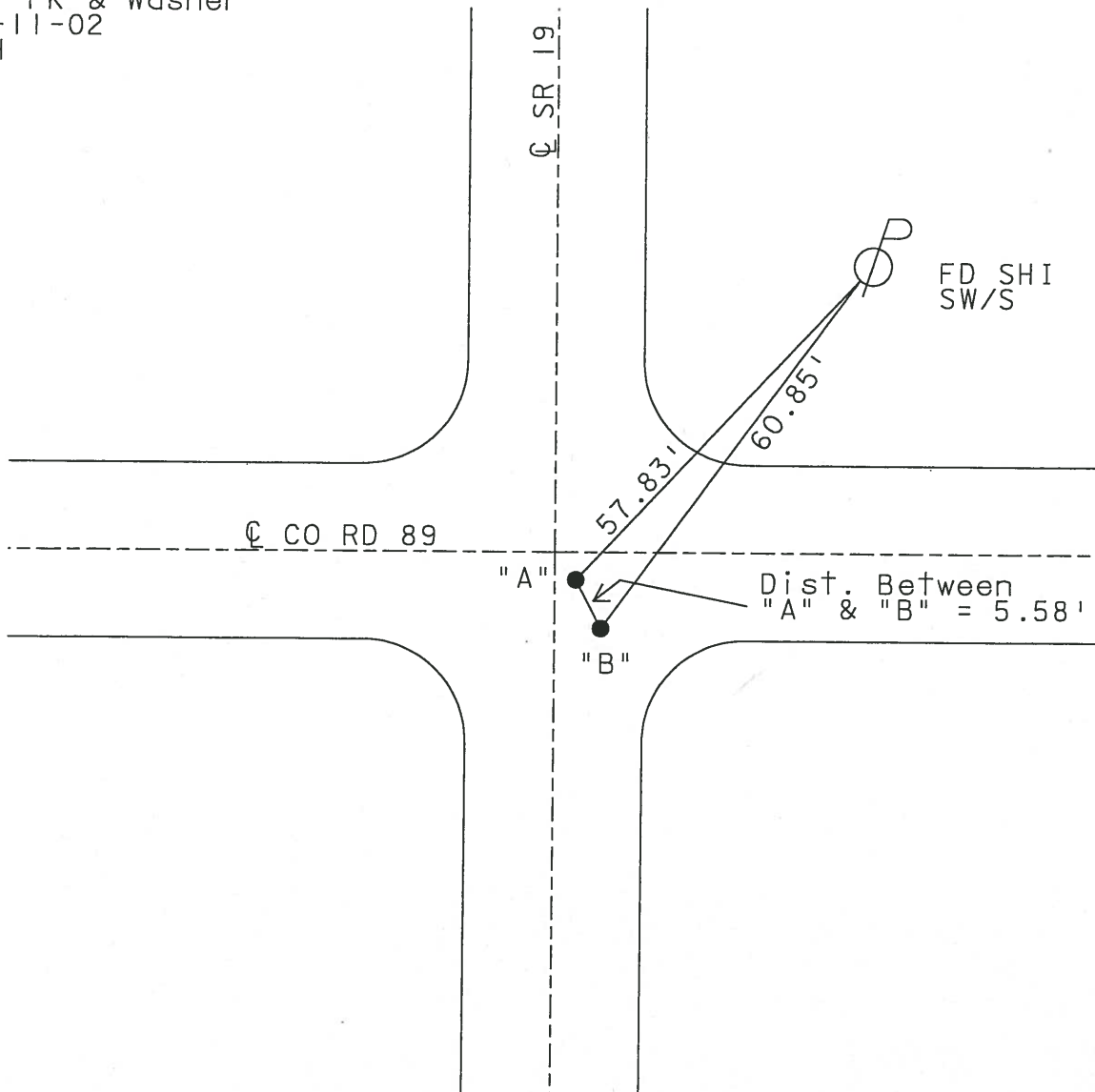
TO EDGE PAVEMENT

S.L.M. A - 687+90 B - 687+85

17



Set PK & Washer
06-11-02
DCH



O.D.O.T. DISTRICT 2 SURVEY OFFICE

PERSONNEL _____

REFERENCE NO. _____

SHEET _____ OF _____

NOTES TR

H.C. DH

R.C. TR

DATE 4-10-02

WEATHER Sunny

TEMP. 50°

ROUTE SR 19

COUNTY SAN

TOWNSHIP San

SECTION _____

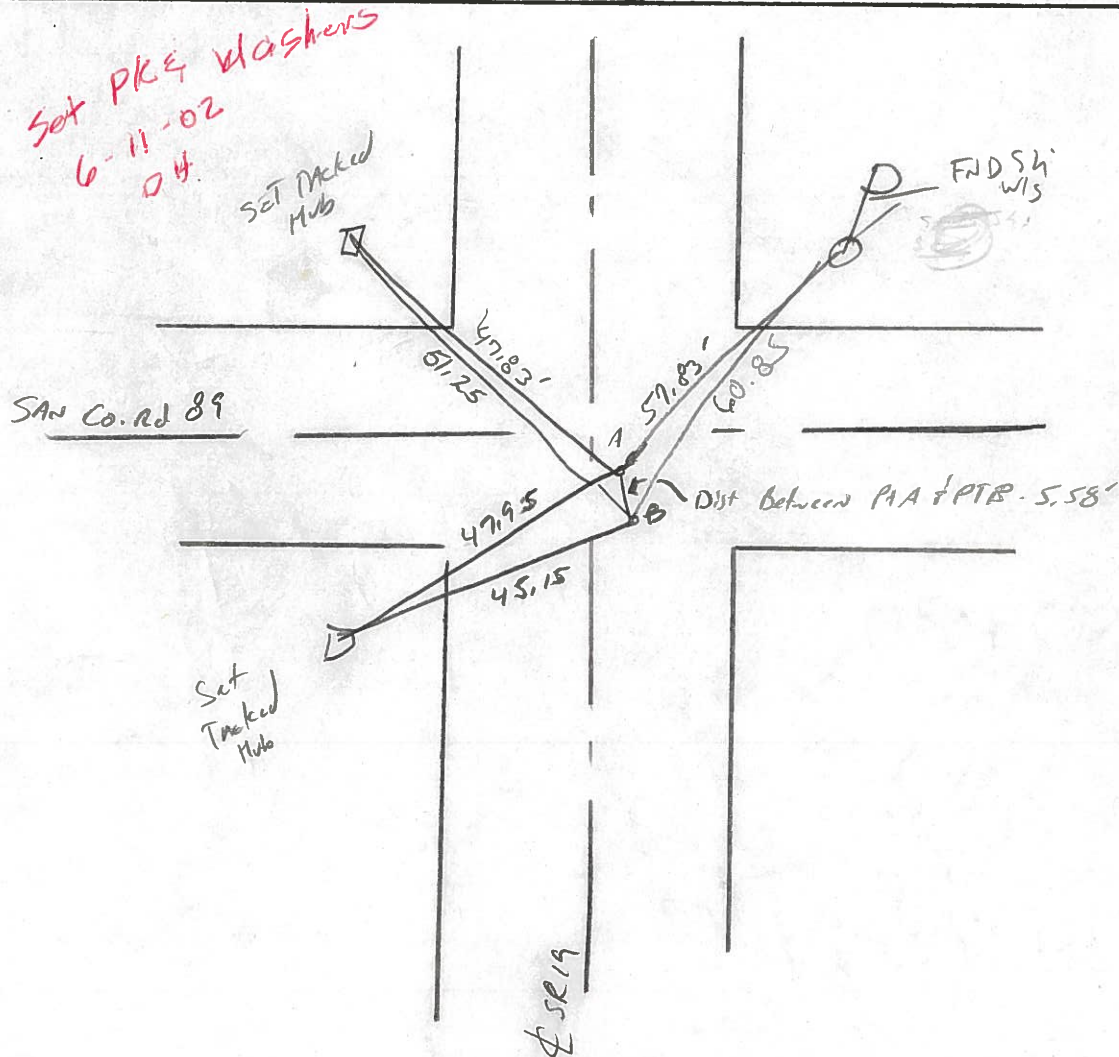
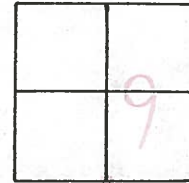
T _____ R _____

TYPE MONUMENT A-I-Pin B-PR Nail
 ON SURFACE - BELOW A-2" below / B-4" Below
 LEFT - ℄ PAV'T. - RIGHT A-3' RT℄ / B-3.8 et℄
 TO _____ EDGE PAVEMENT

S.L.M. A- STA 687+90

B- STA 687+85

17



PERSONNEL TITLE PERSONNEL TITLE

COUNTY Sandusky DATE 8-31-71

S. R. 19 WEATHER cloudy

SEC. 16 & 9 TEMP. 75°

DESCRIPTION U.S. #20 to Ottawa, Co. Line JOB NO.

LEFT CENTER LINE RIGHT

