

O.D.O.T. DISTRICT 2 SURVEY OFFICE (USE ONLY)

PERSONNEL

REFERENCE NO. 17 A

SHEET 2 OF 17

NOTES ROUSOS

DATE 4/10/02

ROUTE SR 19

H.C. HOMAN

WEATHER SUNNY

COUNTY SANDUSKY

R.C. ROUSOS

TEMP. 50°

TOWNSHIP SANDUSKY

SECTION 16

DWG BY AUBLE

PID 107060

T 5 N R 15 E

TYPE MONUMENT IPIN

~~ON SURFACE~~ - BELOW 2"

OFFSET ☉ PAVEMENT 3' ~~LT~~ : RT

- TO - EDGE PAVEMENT

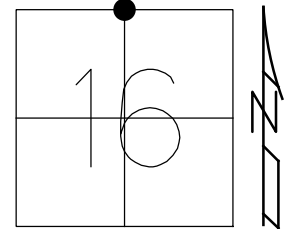
STATION: 687+90

HORZ. DATUM: NAD83 (2011)

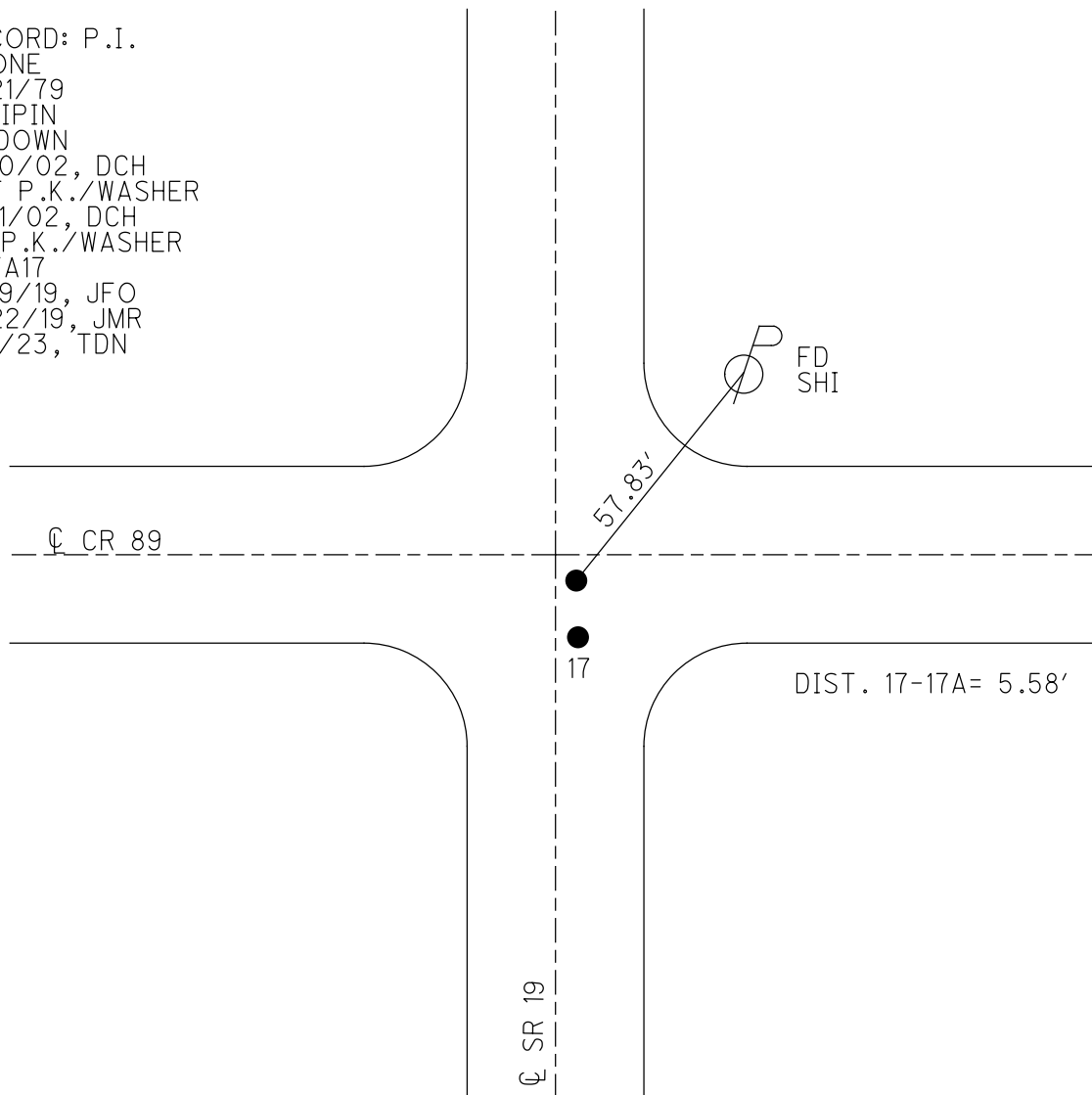
GEOID: NAVD88 2012A

GRID: NORTHING: 632174.984

EASTING: 1794023.812



RECORD: P.I.
 STONE
 8/21/79
 FD IPIN
 2" DOWN
 4/10/02, DCH
 SET P.K./WASHER
 6/11/02, DCH
 FD P.K./WASHER
 REFA17
 3/19/19, JFO
 8/22/19, JMR
 1/5/23, TDN



O.D.O.T. DISTRICT 2 SURVEY OFFICE (USE ONLY)

PERSONNEL

REFERENCE NO. 17 A

SHEET 2 OF 16

NOTES ROUSOS DATE 4/10/02

H.C. HOMAN WEATHER SUNNY

R.C. ROUSOS TEMP. 50°

ROUTE SR 19

COUNTY SANDUSKY

TOWNSHIP SANDUSKY

SECTION 16

DWG BY AUBLE PID 107060

T 5 N R 15 E

TYPE MONUMENT IPIN

~~ON SURFACE~~ - BELOW 2"

OFFSET \odot PAVEMENT 3' ~~LT~~ : RT

- TO - EDGE PAVEMENT

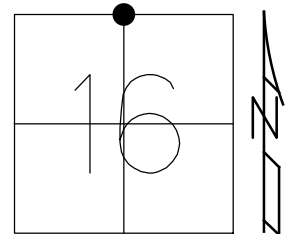
STATION: 687+90

HORIZ.DATUM: NAD83 (2011)

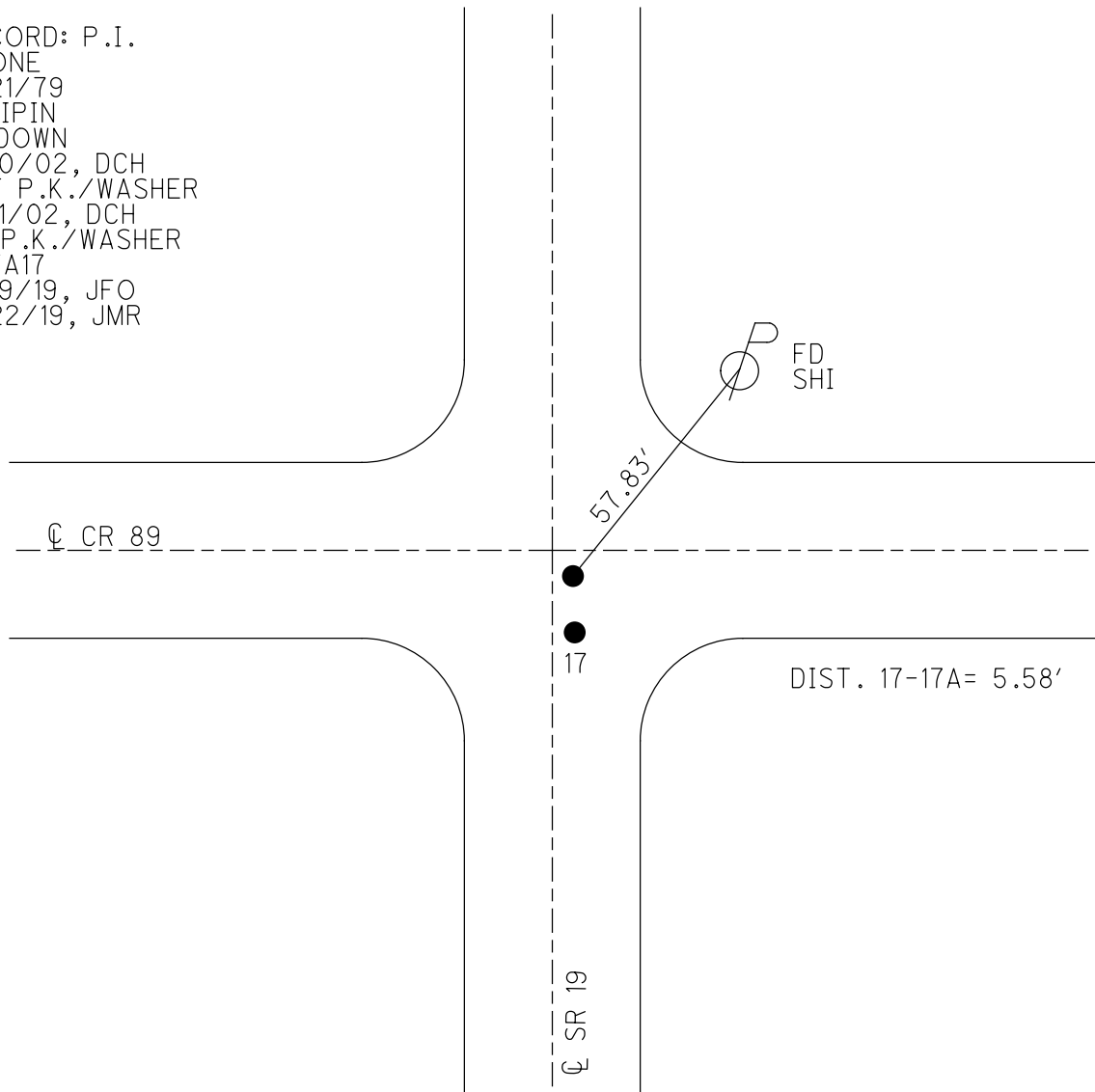
GEOID: 2012A

GRID: NORTHING: 632174.984

EASTING: 1794023.812



RECORD: P.I.
 STONE
 8/21/79
 FD IPIN
 2" DOWN
 4/10/02, DCH
 SET P.K./WASHER
 6/11/02, DCH
 FD P.K./WASHER
 REFA17
 3/19/19, JFO
 8/22/19, JMR



O.D.O.T. DISTRICT 2 SURVEY OFFICE

PERSONNEL _____

REFERENCE NO. _____

SHEET 1 OF 3

NOTES _____ Rousos _____

DATE 04-10-02

ROUTE SR 19

H.C. _____ Homan _____

WEATHER Sunny

COUNTY Sandusky

R.C. _____ Rousos _____

TEMP. 50°

TOWNSHIP Sandusky

SECTION 9

T 5 N R 15 E

TYPE MONUMENT A: Iron Pin; B PK

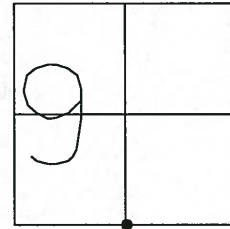
~~ON SURFACE~~ - ~~BELOW~~ A: 2"; B: 4"

~~LEFT - Q PAV'T - RIGHT~~ A: 3'; B: 3.8'

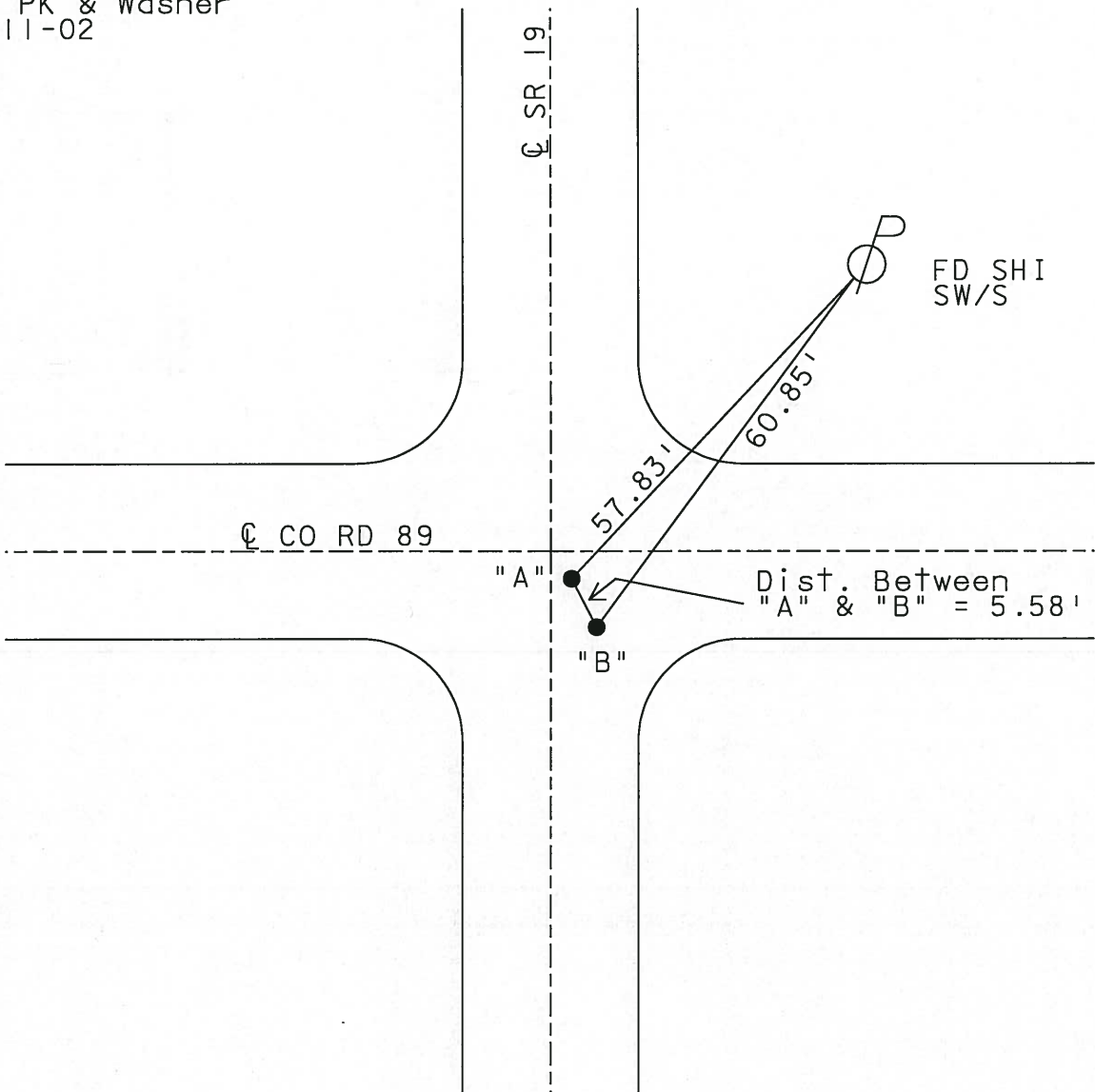
TO EDGE PAVEMENT

S.L.M. A - 687+90 B - 687+85

17A



Set PK & Washer
06-11-02
DCH



FD SHI
SW/S

Dist. Between
"A" & "B" = 5.58'

O.D.O.T. DISTRICT 2 SURVEY OFFICE

PERSONNEL _____

REFERENCE NO. _____

SHEET _____ OF _____

NOTES TR

H.C. DH

R.C. TR

DATE 4-10-02

WEATHER SUNNY

TEMP. 50°

ROUTE SR 19

COUNTY SAN

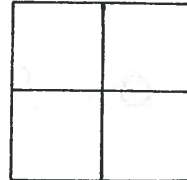
TOWNSHIP _____

SECTION _____

T _____ R _____

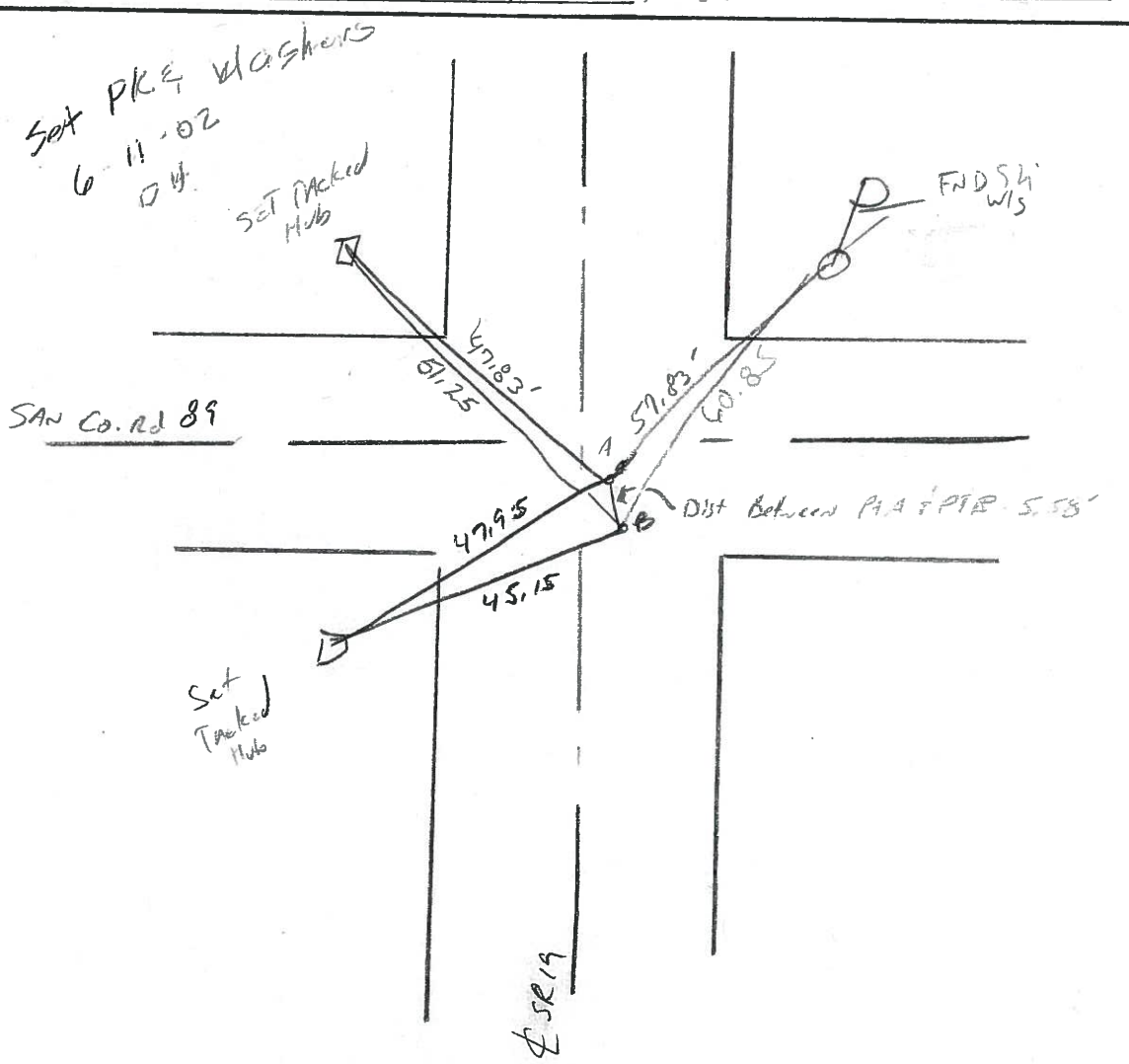
TYPE MONUMENT A-I-Pin B-PK Nail
 ON SURFACE - BELOW A-2" below / B-4" Below
 LEFT - ☉ PAV'T. - RIGHT A-3' RT / B-3.5' RT
 TO _____ EDGE PAVEMENT

17A



S.L.M. A-STA 687+90

B-STA 687+85



PERSONNEL TITLE PERSONNEL TITLE

COUNTY Sandusky DATE 8-31-71

S. R. 19 WEATHER Cloudy

SEC. 16 & 9 TEMP. 75°

DESCRIPTION U.S. # 20 to Ottawa, Co. Line LEFT CENTER LINE RIGHT JOB NO.

