

O.D.O.T. DISTRICT 2 SURVEY OFFICE (USE ONLY)

PERSONNEL

REFERENCE NO. 18

SHEET 3 OF 17

NOTES ROUSOS

DATE 4/10/02

ROUTE SR 19

H.C. HOMAN

WEATHER SUNNY

COUNTY SANDUSKY

R.C. ROUSOS

TEMP. 50°

TOWNSHIP SANDUSKY

DWG BY AUBLE

PID 107060

SECTION 9

T 5 N R 15 E

TYPE MONUMENT P.K./WASHER

ON SURFACE - ~~BELOW~~ ON

OFFSET Q PAVEMENT 0.5' ~~LT~~ : RT

- TO - EDGE PAVEMENT

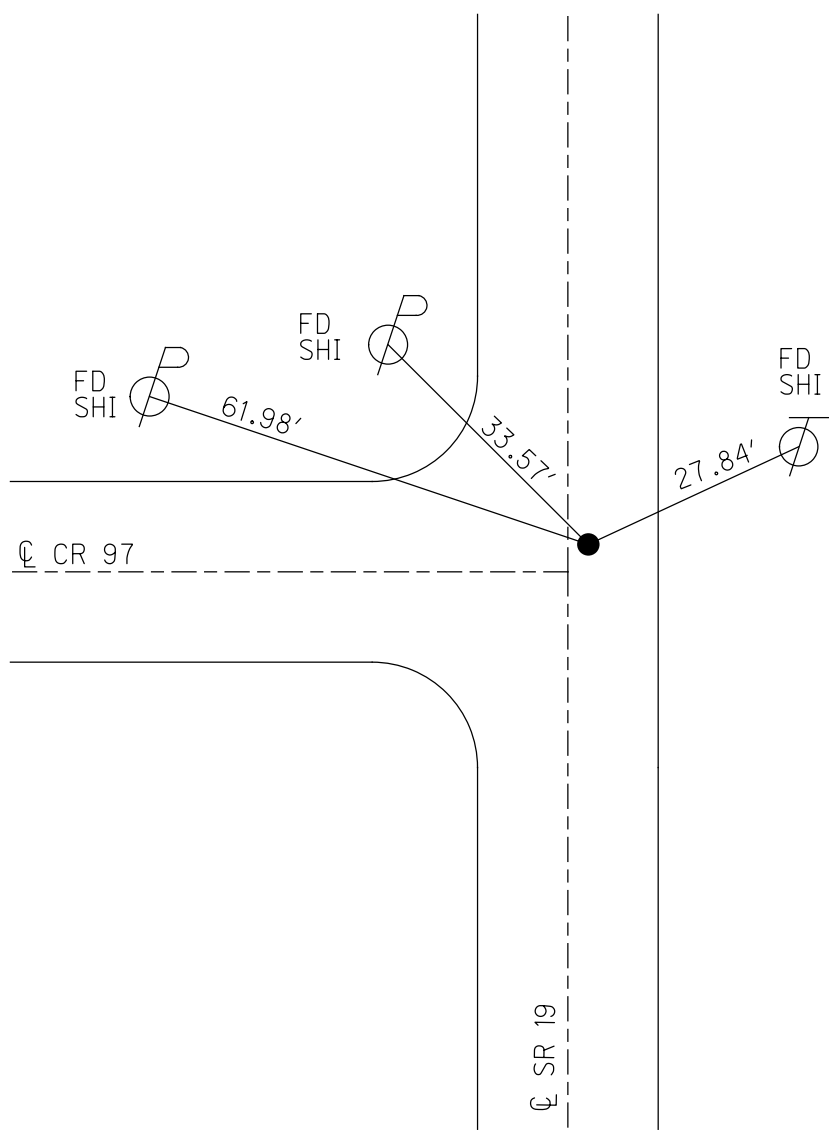
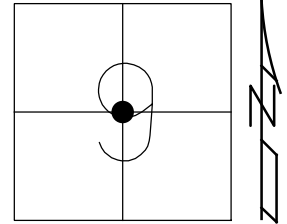
STATION: 714+57

HORZ.DATUM: NAD83 (2011)

GEOID: NAVD88 2012A

GRID: NORTHING: 634826.799

EASTING: 1794089.127



RECORD:  
 FD P.K.NAIL  
 8/31/71  
 SET P.K.NAIL  
 3/16/79  
 FD P.K.NAIL  
 7/9/90, CRONIN  
 FD P.K./WASHER  
 4/10/02, DCH  
 SET P.K./WASHER  
 6/11/02, DCH  
 FD MONBOX  
 W/ 5/8" IPIN  
 REF18  
 3/19/19, JFO  
 8/22/19, JMR  
 1/5/23, TDN

O.D.O.T. DISTRICT 2 SURVEY OFFICE (USE ONLY)

PERSONNEL

REFERENCE NO. 18

SHEET 3 OF 16

NOTES ROUSOS DATE 4/10/02  
 H.C. HOMAN WEATHER SUNNY  
 R.C. ROUSOS TEMP. 50°

ROUTE SR 19  
 COUNTY SANDUSKY  
 TOWNSHIP SANDUSKY  
 SECTION 9  
 T 5 N R 15 E

DWG BY AUBLE PID 107060

TYPE MONUMENT P.K./WASHER

ON SURFACE - ~~BELOW~~ ON

OFFSET  $\varnothing$  PAVEMENT 0.5' ~~±~~ : RT

- TO - EDGE PAVEMENT

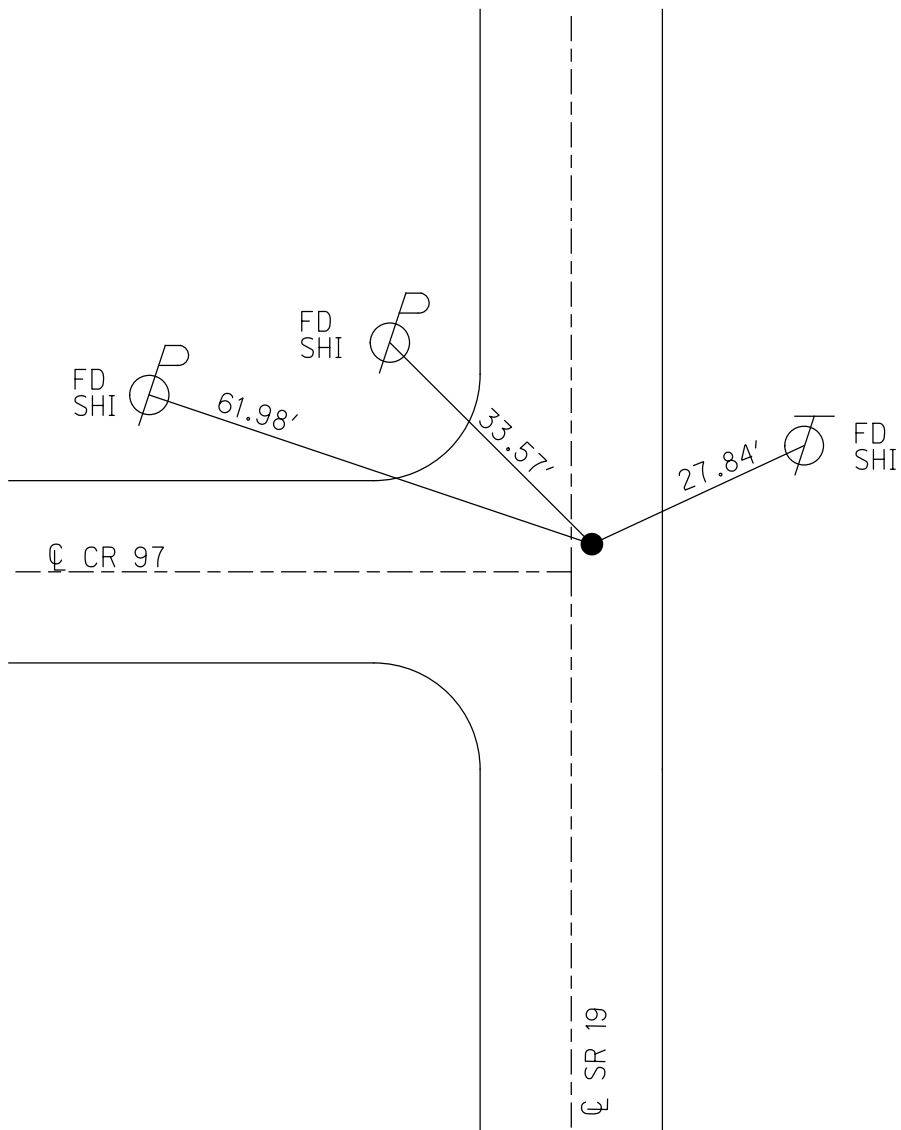
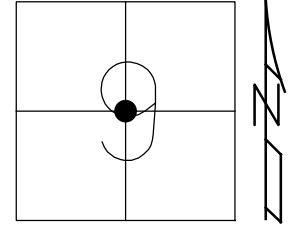
STATION: 714+57

HORZ.DATUM: NAD83 (2011)

GEOID: 2012A

GRID: NORTHING: 634826.799

EASTING: 1794089.127



RECORD:  
 FD P.K.NAIL  
 8/31/71  
 SET P.K.NAIL  
 3/16/79  
 FD P.K.NAIL  
 7/9/90, CRONIN  
 FD P.K./WASHER  
 4/10/02, DCH  
 SET P.K./WASHER  
 6/11/02, DCH  
 FD MONBOX  
 W/ 5/8" IPIN  
 REF18  
 3/19/19, JFO  
 8/22/19, JMR

$\varnothing$  SR 19

O.D.O.T. DISTRICT 2 SURVEY OFFICE

PERSONNEL

REFERENCE NO. 18

SHEET 2 OF 3

NOTES Rousos

DATE 04-10-02

ROUTE SR 19

H.C. Homan

WEATHER Sunny

COUNTY Sandusky

R.C. Rousos

TEMP. 50°

TOWNSHIP Sandusky

SECTION 9

T 5 N R 15 E

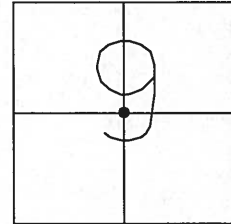
TYPE MONUMENT PK/Washer

ON SURFACE - ~~BELOW~~ On Surface

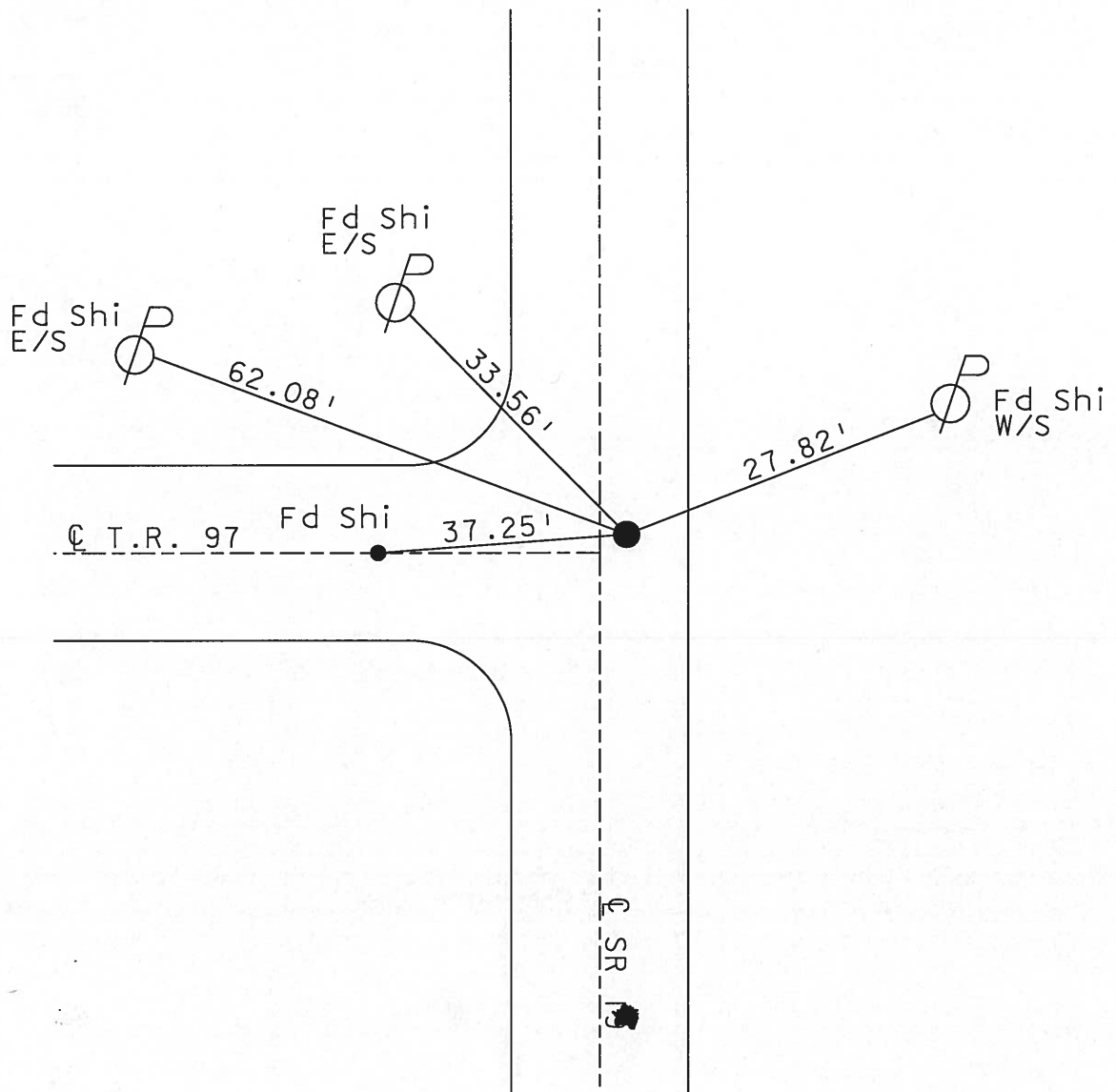
~~LEFT~~ - Q PAV'T - RIGHT 0.5' RT

TO EDGE PAVEMENT

S.L.M. 714+57



Set PK & Washer  
6-11-02  
DCH



O.D.O.T. DISTRICT 2 SURVEY OFFICE

PERSONNEL

NOTES

H.C.

R.C.

REFERENCE NO. 18

DATE 7/09/90

WEATHER SUNNY

TEMP. 85°

SHEET      OF     

ROUTE 19

COUNTY SANDUSKY

TOWNSHIP SANDUSKY

SECTION 9

T. 5 N R. 15 E

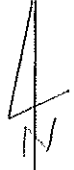
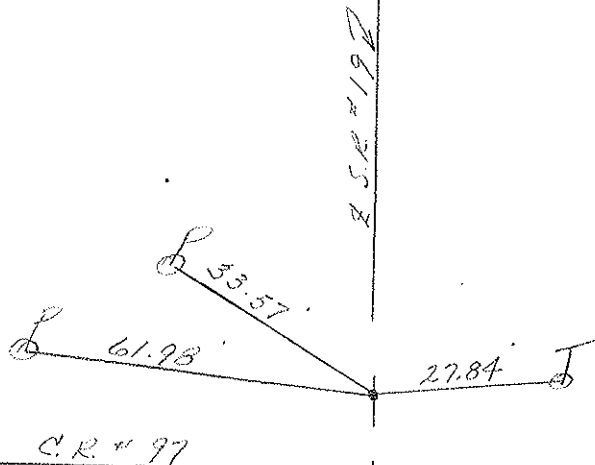
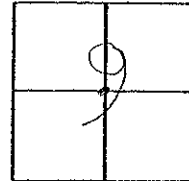
TYPE MONUMENT P.K. WASHER

ON SURFACE - BELOW     

LEFT - & PAV'T. - RIGHT 1.0

TO      EDGE PAVEMENT

S.L.M.     



P.K. WASHER ATOP  
P.K. ATOP ?

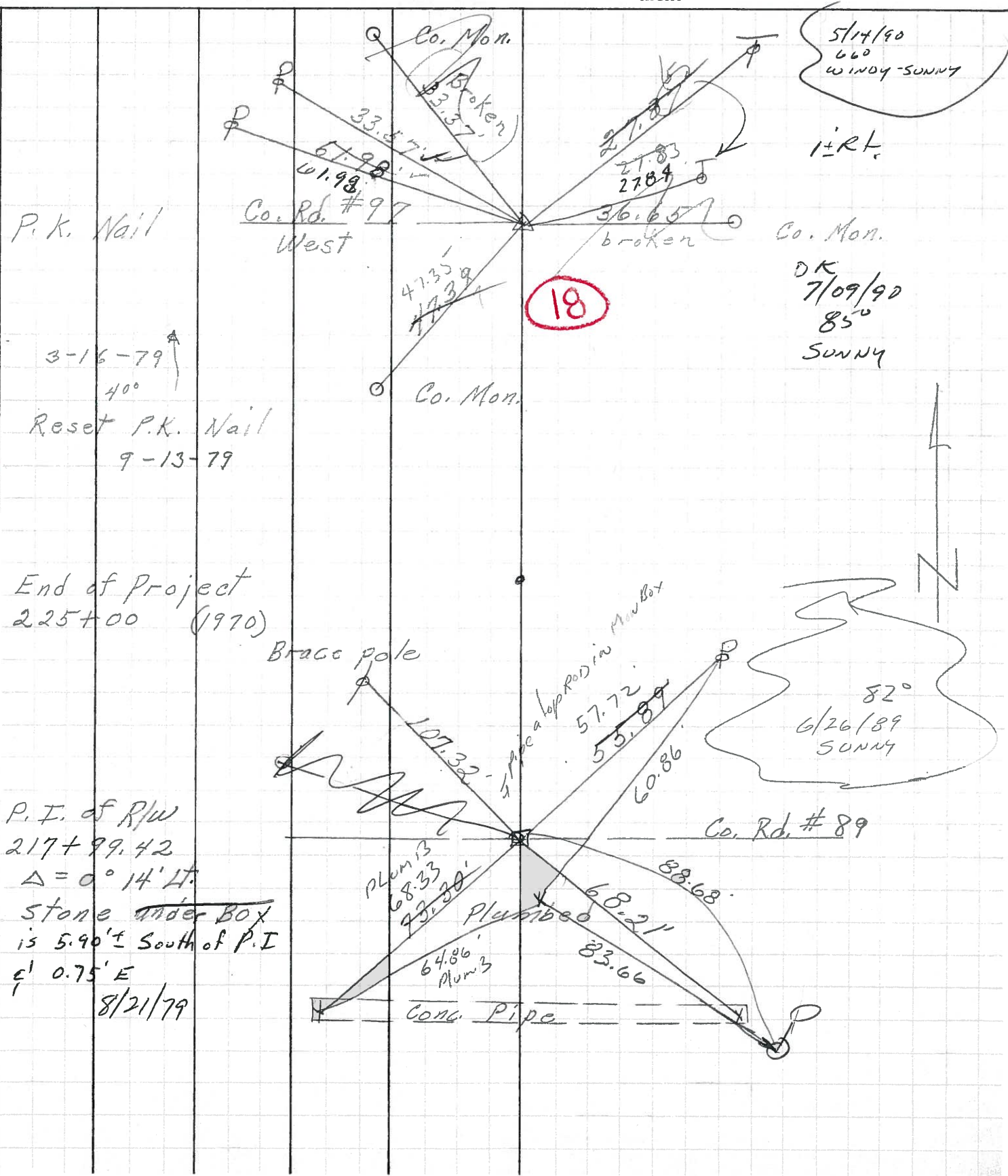
PERSONNEL TITLE PERSONNEL TITLE

COUNTY Sandusky DATE 8-31-71

S. R. 19 WEATHER cloudy

SEC. 16 & 9 TEMP. 75°

DESCRIPTION U.S. #20 to Ottawa, Co. Line JOB NO.



P.K. Nail

3-16-79  
40°

Reset P.K. Nail  
9-13-79

End of Project  
225+00 (1970)

P.I. of R/W  
217+99.42  
 $\Delta = 0^\circ 14' 11''$   
Stone under Box  
is 5.90' ± South of P.I.  
E' 0.75' E  
8/21/79

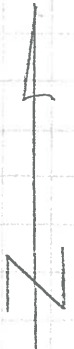
5/14/90  
66°  
WINDY-SUNNY

i-rt.

Co. Mon.  
DK  
7/09/90  
85°  
SUNNY

18

82°  
6/26/89  
SUNNY



PERSONNEL TITLE PERSONNEL TITLE

Schneider

Potts

COUNTY Sandusky

DATE Feb. 1968

Mosser

S. R. # 19

WEATHER

Barbour

SEC. North of Fremont

TEMP.

Redding

DESCRIPTION

Ties for Control Points

JOB NO.

LEFT

CENTER LINE

RIGHT

