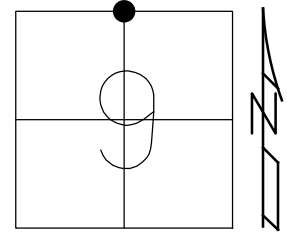


O.D.O.T. DISTRICT 2 SURVEY OFFICE (USE ONLY)

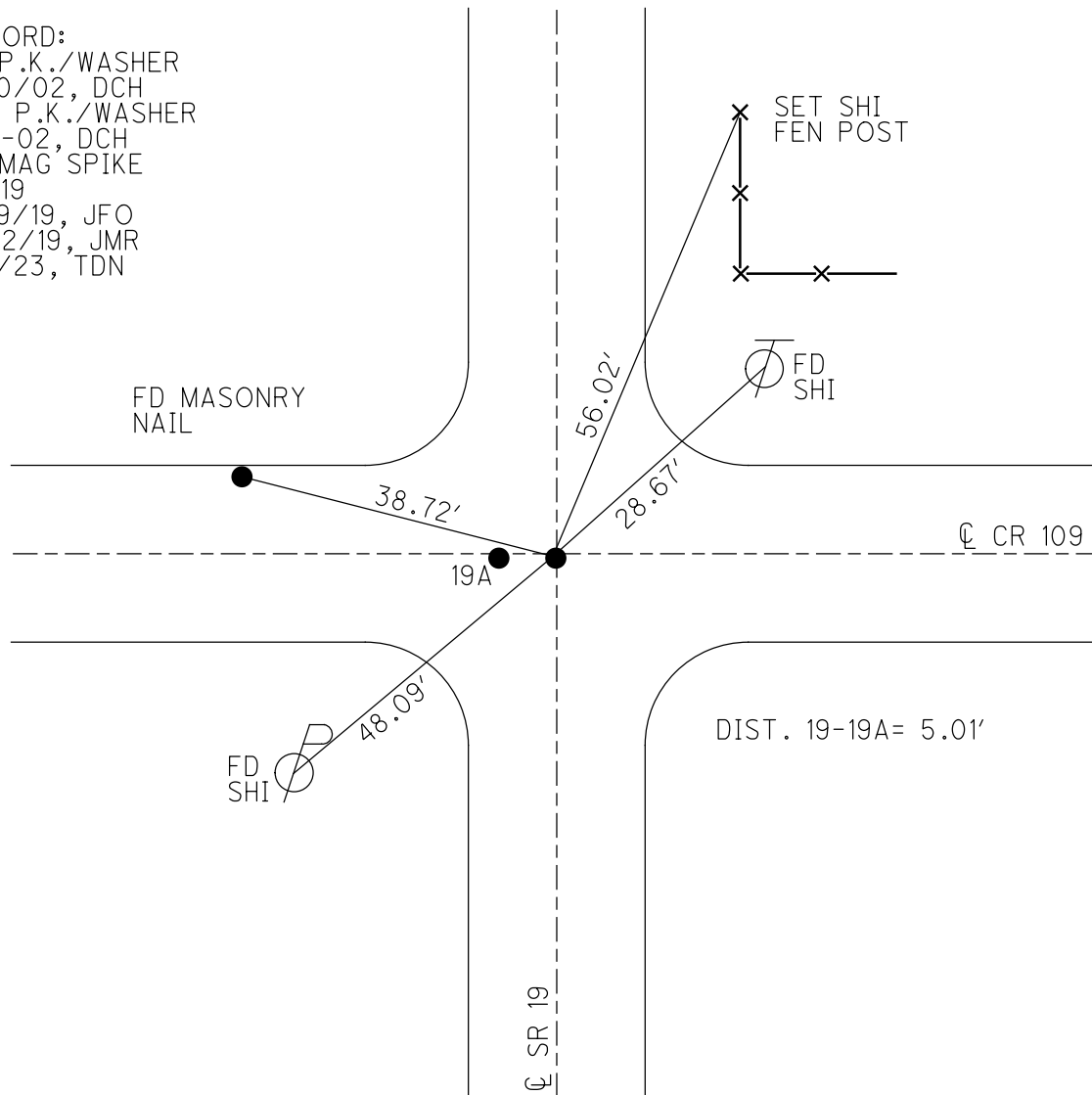
PERSONNEL \_\_\_\_\_ REFERENCE NO. 19 SHEET 5 OF 17  
 NOTES CANTERBURY DATE 5/4/07 ROUTE SR 19  
 H.C. HOMAN WEATHER SUNNY COUNTY SANDUSKY  
 R.C. SAPP TEMP. 50° TOWNSHIP SANDUSKY  
 DWG BY AUBLE PID 107060 SECTION 9  
 T 5 N R 15 E

TYPE MONUMENT P.K./WASHER  
 ON SURFACE - ~~BELOW~~ ON  
 OFFSET ☉ PAVEMENT ON \_\_\_\_\_ LT : RT  
 - \_\_\_\_\_ TO - \_\_\_\_\_ EDGE PAVEMENT  
 STATION: 741+12



HORZ. DATUM: NAD83 (2011) GEOID: NAVD88 2012A  
 GRID: NORTHING: 637470.958 EASTING: 1794159.413

RECORD:  
 FD P.K./WASHER  
 4/10/02, DCH  
 SET P.K./WASHER  
 6-11-02, DCH  
 FD MAG SPIKE  
 REF19  
 3/19/19, JFO  
 8/22/19, JMR  
 1/5/23, TDN



O.D.O.T. DISTRICT 2 SURVEY OFFICE (USE ONLY)

PERSONNEL \_\_\_\_\_

REFERENCE NO. 19

SHEET 4 OF 16

NOTES CANTERBURY

DATE 5/4/07

ROUTE SR 19

H.C. HOMAN

WEATHER SUNNY

COUNTY SANDUSKY

R.C. SAPP

TEMP. 50°

TOWNSHIP SANDUSKY

SECTION 9

DWG BY AUBLE

PID 107060

T 5 N R 15 E

TYPE MONUMENT P.K./WASHER

ON SURFACE - ~~BELOW~~ ON

OFFSET  $\varnothing$  PAVEMENT ON LT : RT

- TO - EDGE PAVEMENT

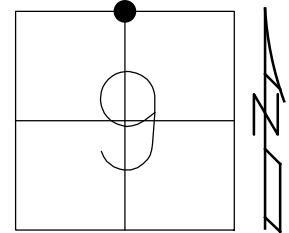
STATION: 741+12

HORZ.DATUM: NAD83 (2011)

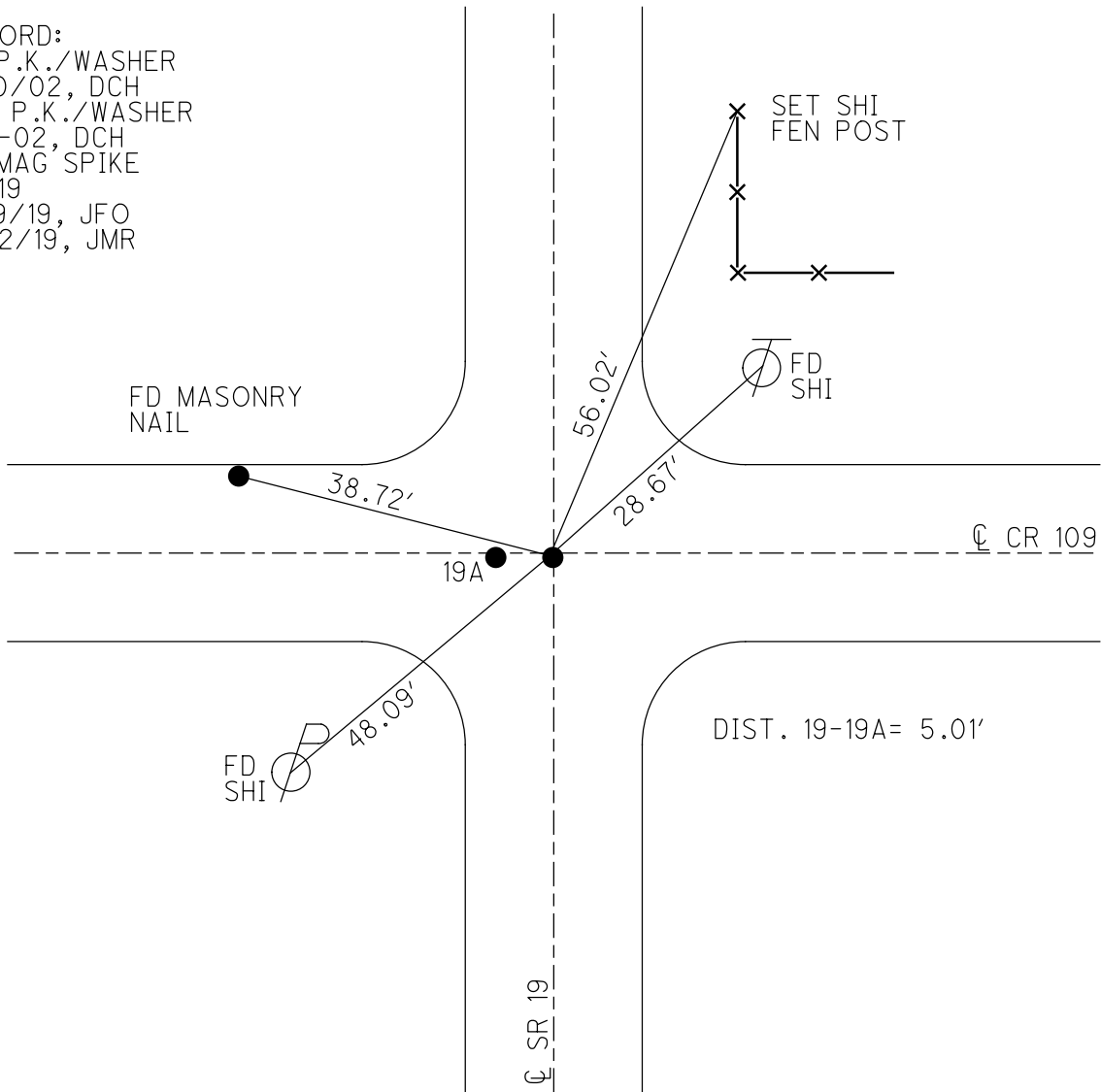
GEOID: 2012A

GRID: NORTHING: 637470.958

EASTING: 1794159.413



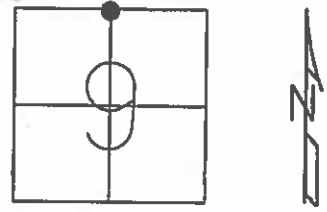
RECORD:  
 FD P.K./WASHER  
 4/10/02, DCH  
 SET P.K./WASHER  
 6-11-02, DCH  
 FD MAG SPIKE  
 REF19  
 3/19/19, JFO  
 8/22/19, JMR



**O.D.O.T. DISTRICT 2 SURVEY OFFICE (USE ONLY)**

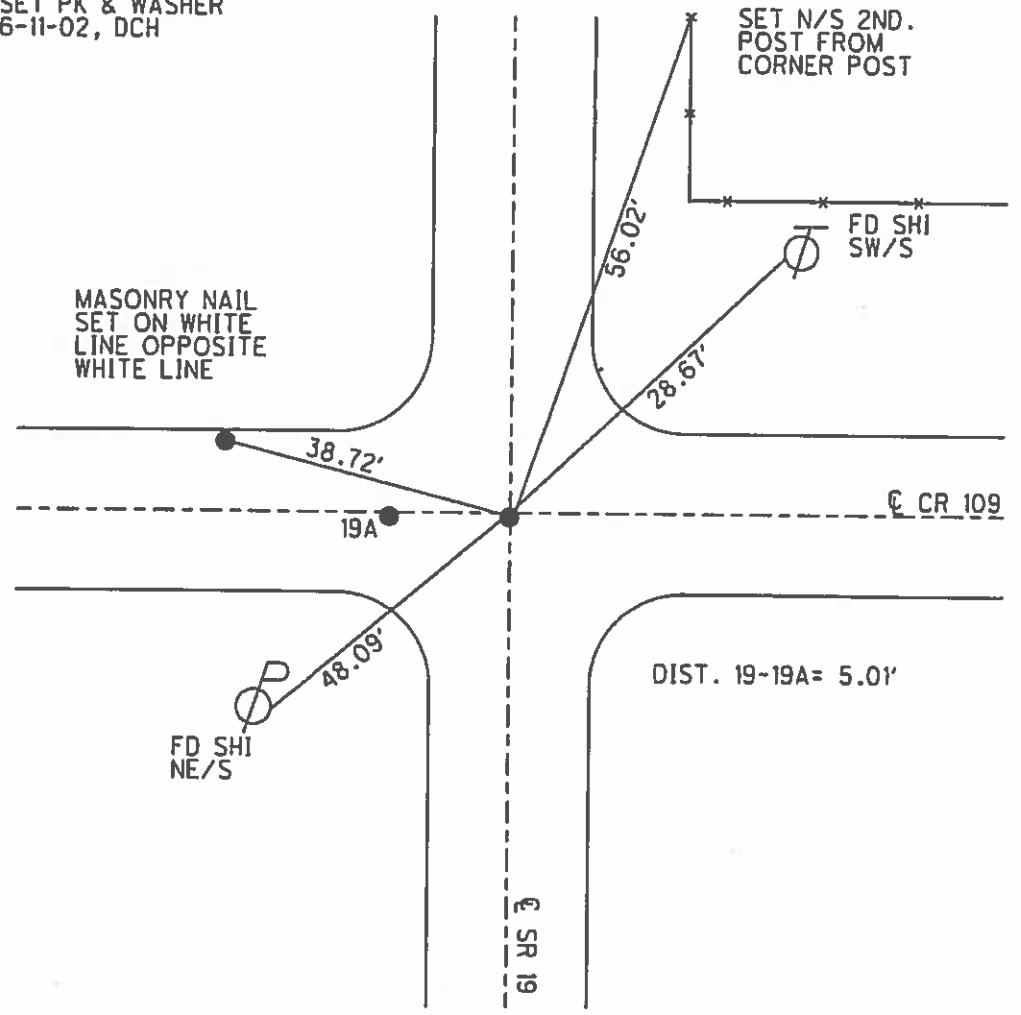
PERSONNEL	REFERENCE NO.	19	SHEET	1	OF	13
NOTES	CANTERBURY	DATE	5/4/07	ROUTE	SR 19	
H.C.	HOMAN	WEATHER	SUNNY	COUNTY	SANDUSKY	
R.C.	SAPP	TEMP.	50°	TOWNSHIP	SANDUSKY	
				SECTION	9	
				T	5	N
				R	15	E

TYPE MONUMENT P.K./WASHER  
 ON SURFACE - ~~BELOW~~ ON  
~~LEFT~~ - ☉ PAV'T - ~~RIGHT~~ ON  
- TO - EDGE PAVEMENT  
 S.L.M. 741+12



GPS NORTHING: 637471.029 EASTING: 1794159.390

SET PK & WASHER  
6-11-02, DCH



O.D.O.T. DISTRICT 2 SURVEY OFFICE

PERSONNEL \_\_\_\_\_

REFERENCE NO. \_\_\_\_\_

SHEET 3 OF 3

NOTES \_\_\_\_\_ Rousos \_\_\_\_\_

DATE 04-10-02

ROUTE SR 19

H.C. Homan

WEATHER Sunny

COUNTY Sandusky

R.C. Rousos

TEMP. 50°

TOWNSHIP Sandusky

SECTION 9

T 5 N R 15 N

TYPE MONUMENT Both PK's

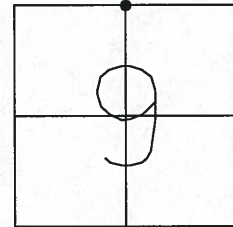
ON SURFACE - ~~BELOW~~ Both On Surface

LEFT - Q PAV'T - ~~RIGHT~~ A-5' LT B-on Both

TO EDGE PAVEMENT

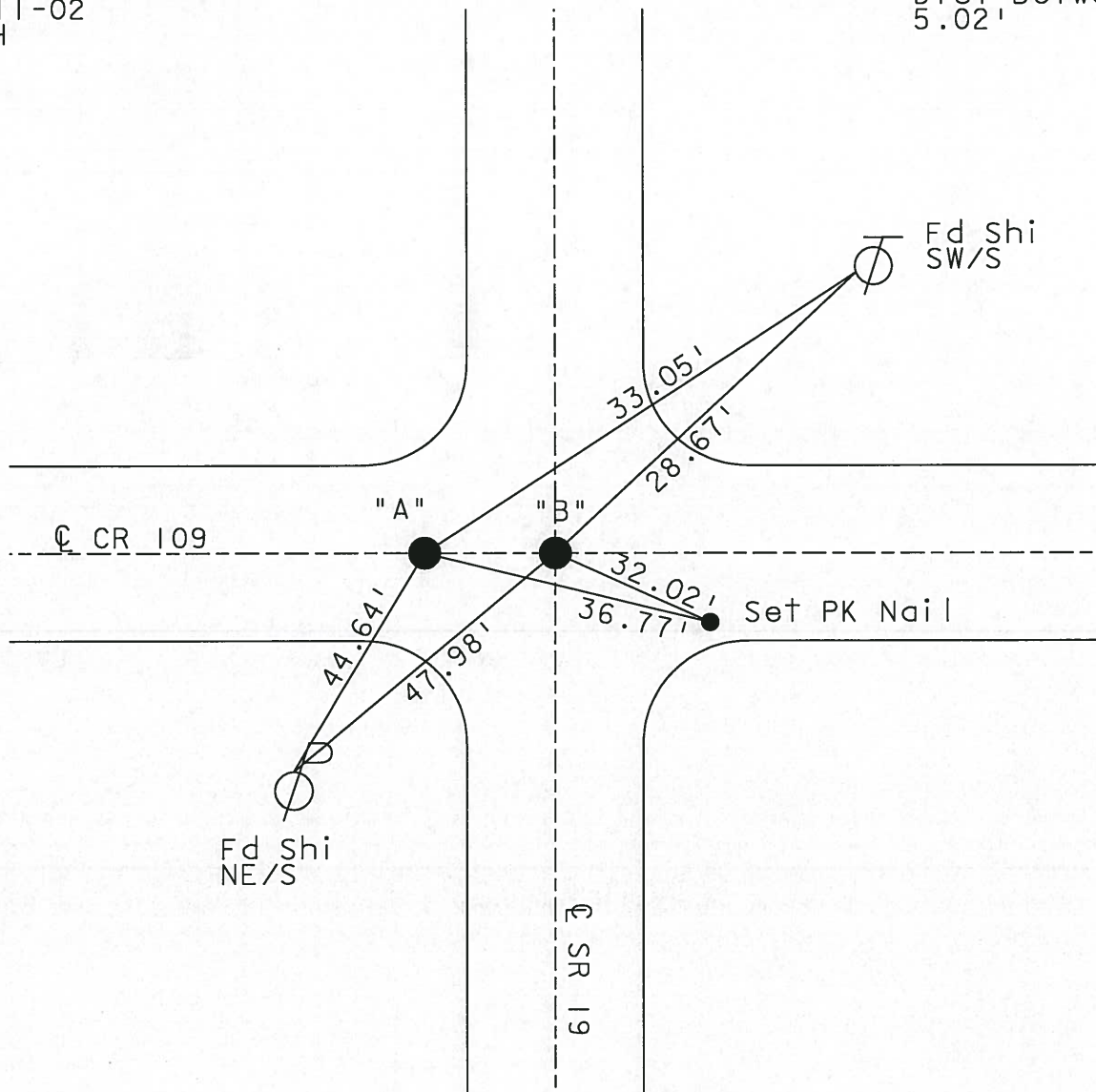
S.L.M. 741+12

**19**



Set PK & Washer  
6-11-02  
DCH

Dist Between Pts  
5.02'



# O.D.O.T. DISTRICT 2 SURVEY OFFICE

PERSONNEL \_\_\_\_\_

REFERENCE NO. \_\_\_\_\_

SHEET \_\_\_\_\_ OF \_\_\_\_\_

NOTES TR

H.C. DK

R.C. TR

DATE 4-10-02

WEATHER Sunny

TEMP. 50°

ROUTE SR 19

COUNTY SAN

TOWNSHIP SAN/RICE

SECTION \_\_\_\_\_

T \_\_\_\_\_ R \_\_\_\_\_

TYPE MONUMENT Both PK's

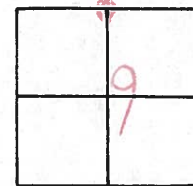
ON SURFACE - BELOW Both on Surface

LEFT - PAV'T. - RIGHT A - 5' LT & 1/8 on & both

TO EDGE PAVEMENT

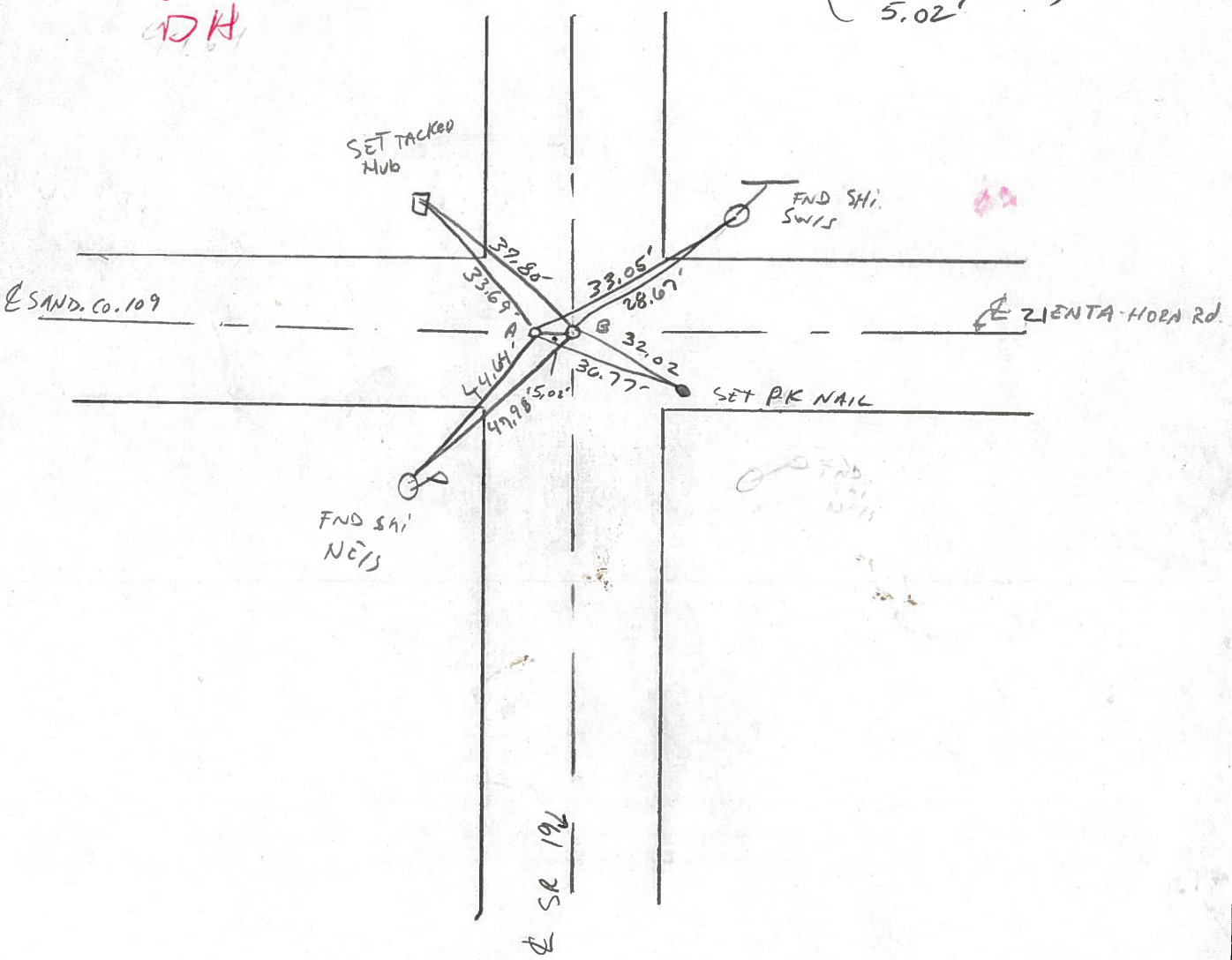
S.L.M. 741+12

19



Set PK & Washers  
6-11-02  
DK

(Dist Between Pts)  
5.02'



O.D.O.T. DISTRICT 2 SURVEY OFFICE

PERSONNEL

REFERENCE NO. \_\_\_\_\_

SHEET \_\_\_\_\_ OF \_\_\_\_\_

NOTES CROWIN

H.C. RIPPLE

R.C. BARBOUR

GEYMAN

DATE 7/09/90

WEATHER SUNNY

TEMP. \_\_\_\_\_

ROUTE #19

COUNTY SANDUSKY

TOWNSHIP SANDUSKY E

SECTION RICE-9 SANDUSKY

T 5 N R 15 E

TYPE MONUMENT 2 P.K. & WASHER

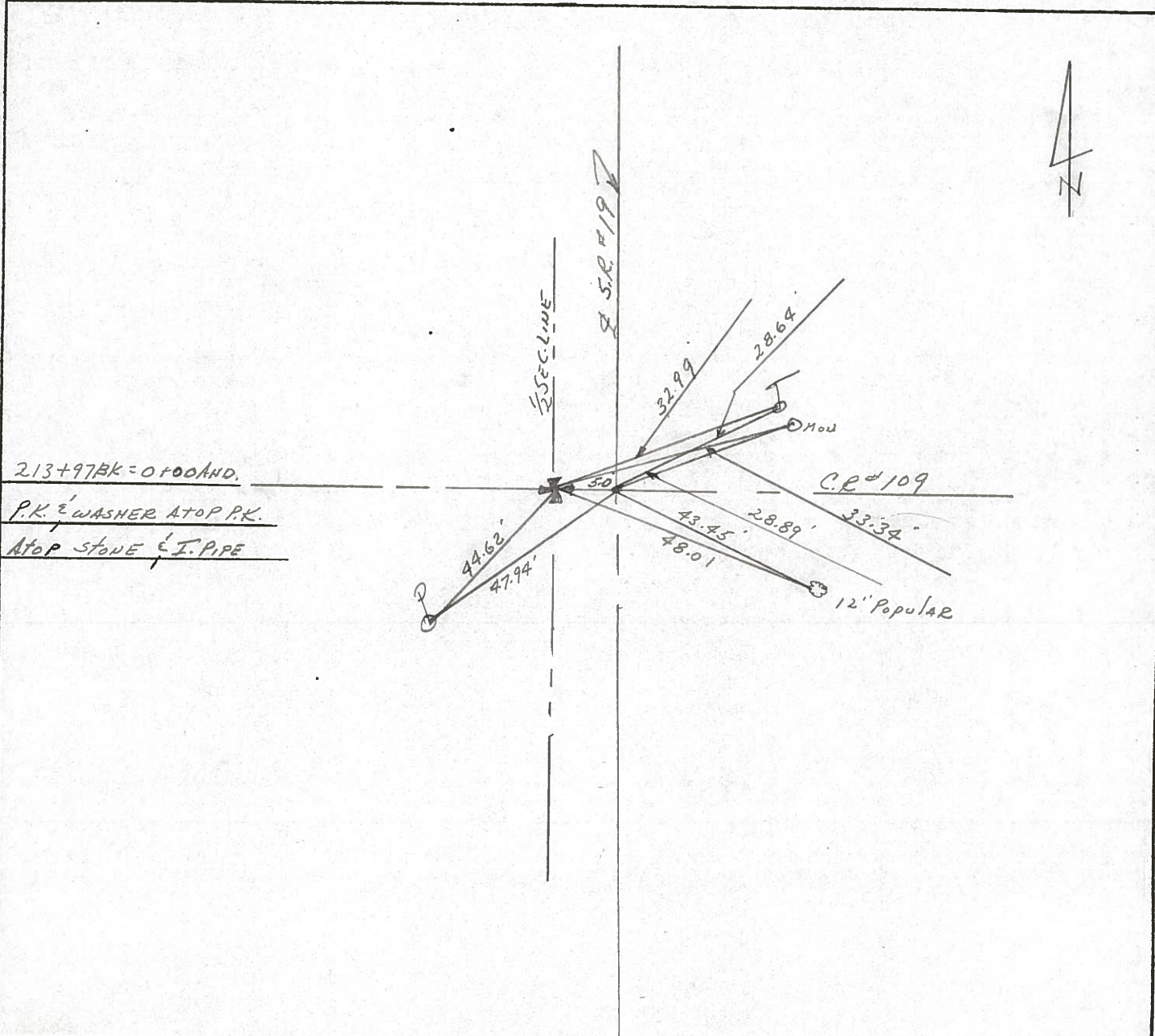
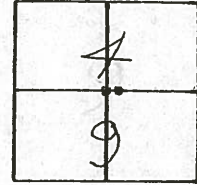
ON SURFACE - BELOW \_\_\_\_\_

LEFT - CL PAVT. - RIGHT 5' L. & PAINT

TO EDGE PAVEMENT

S.L.M. \_\_\_\_\_

19



Rice and 2007

PERSONNEL TITLE PERSONNEL TITLE

COUNTY Sandusky DATE

S. R. 19 WEATHER

SEC. 4 Rice Twp. TEMP.

DESCRIPTION U.S. # 20 to Ottawa, Co. Line JOB NO.

LEFT CENTER LINE RIGHT

P.I.

5/14/90  
sunny - windy  
66°

4' w of P.V.T

HEADLESS P.K.  
1" DOWN

P.K. & SHINER

did not find

7/09/90  
SUNNY  
HUMID  
89°

P.I.

26 + 29.50

Head off P.K.

32.15.16  
32.20.0

33.69  
33.55  
33.37

Co. Man.

5.00'

Co. Rd. # 119

42.57  
43.99  
44.21  
25

42.62 NOT PLUMB  
Co. Man.

6/26/89  
SUNNY  
82°

33.34  
28.89 MON.

Reset P.K. Nails  
9-13-79

19

P.K.s & OWNERS

Co. Rd. # 109

Twp. Rd. # 109

32.99  
33.34  
33.34

Co. Man.

28.64 T

fence Post out

213 + 97

~~tip of head~~  
Iron Pin  
P.K. set on top

BLACK GRANITE

BROKEN  
Co. Man.

55'  
68.62  
73.17  
44.62  
48.03  
47.98  
47.94

43.45  
37.00  
37.00  
48.01

5/14/90  
windy 66°

7/09/90  
85°  
SUNNY  
Humid

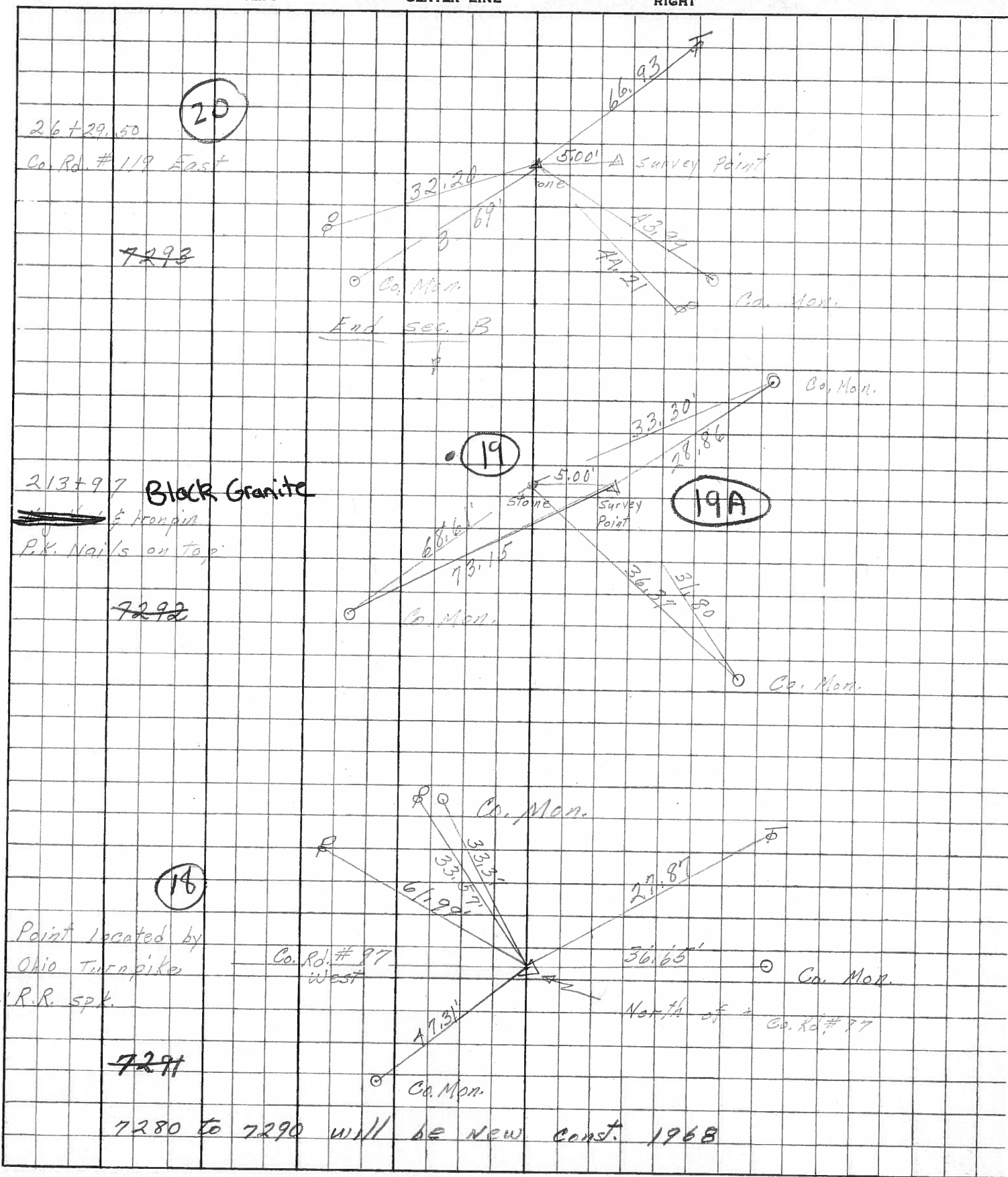
out  
Co. Man.

12' POPULAR

PERSONNEL	TITLE	PERSONNEL	TITLE
Schneider		Potts	
Mosser			
Barbour			
Redding			

COUNTY Sandusky DATE Feb. 1968  
 S. R. # 19 WEATHER \_\_\_\_\_  
 SEC. North of Fremont TEMP. \_\_\_\_\_

DESCRIPTION Ties for Control Points JOB NO. \_\_\_\_\_





PERSONNEL TITLE PERSONNEL TITLE

Schneider

Zahn

COUNTY Sandusky

DATE 3

Hawk

Schwartz

S. R. # 19

WEATHER

Mosser

SEC.

TEMP.

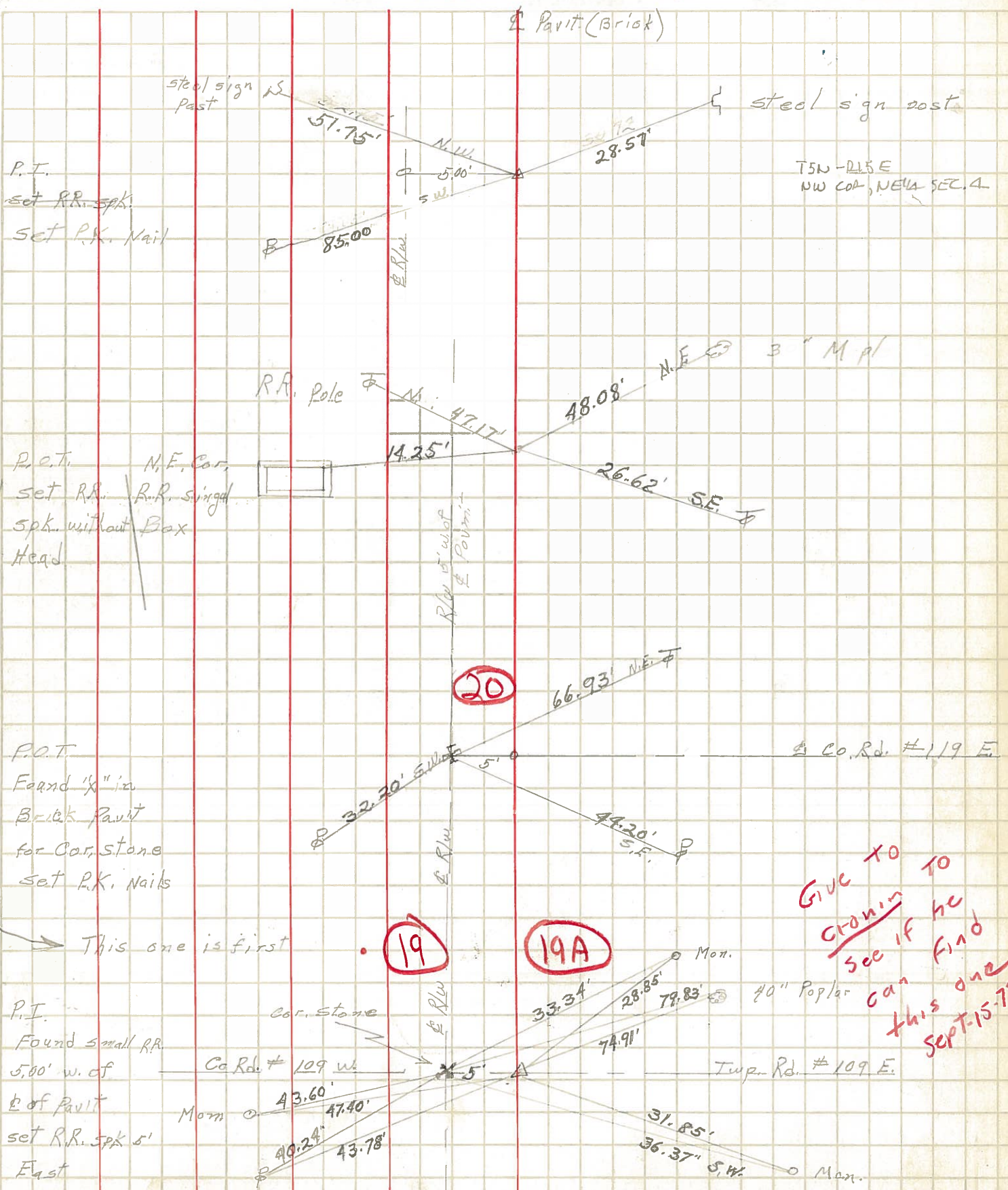
DESCRIPTION Ties for Control Points

JOB NO.

LEFT

CENTER LINE

RIGHT



GIVE TO  
 Cronin TO  
 see if he  
 can find  
 this one  
 SEPT-15-79

P.T.  
 set RR. spk.  
 set P.K. Nail

P.O.T.  
 N.E. Cor.  
 set RR. R.R. signal  
 spk. without Box  
 a Head

P.O.T.  
 Found 'x' in  
 Brick Pav. for  
 Cor. Stone  
 set P.K. Nails

P.I.  
 Found small RR.  
 5.00' w. of  
 E. of Pav.  
 set RR. spk 5'  
 East

T5N-R15E  
 NW COR. NE 1/4 SEC. 4

19

19A

20