

O.D.O.T. DISTRICT 2 SURVEY OFFICE (USE ONLY)

PERSONNEL

REFERENCE NO. 19 A

SHEET 6 OF 17

NOTES CANTERBURY

DATE 5/4/07

ROUTE SR 19

H.C. HOMAN

WEATHER SUNNY

COUNTY SANDUSKY

R.C. SAPP

TEMP. 50°

TOWNSHIP SANDUSKY

SECTION 9

DWG BY AUBLE PID 107060

T 5 N R 15 E

TYPE MONUMENT P.K./WASHER

ON SURFACE - ~~BELOW~~ ON

OFFSET \odot PAVEMENT 5' LT : ~~RT~~

- TO - EDGE PAVEMENT

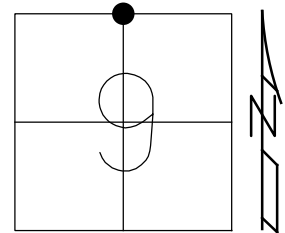
STATION: 741+12

HORIZ.DATUM: NAD83 (2011)

GEOID: NAVD88 2012A

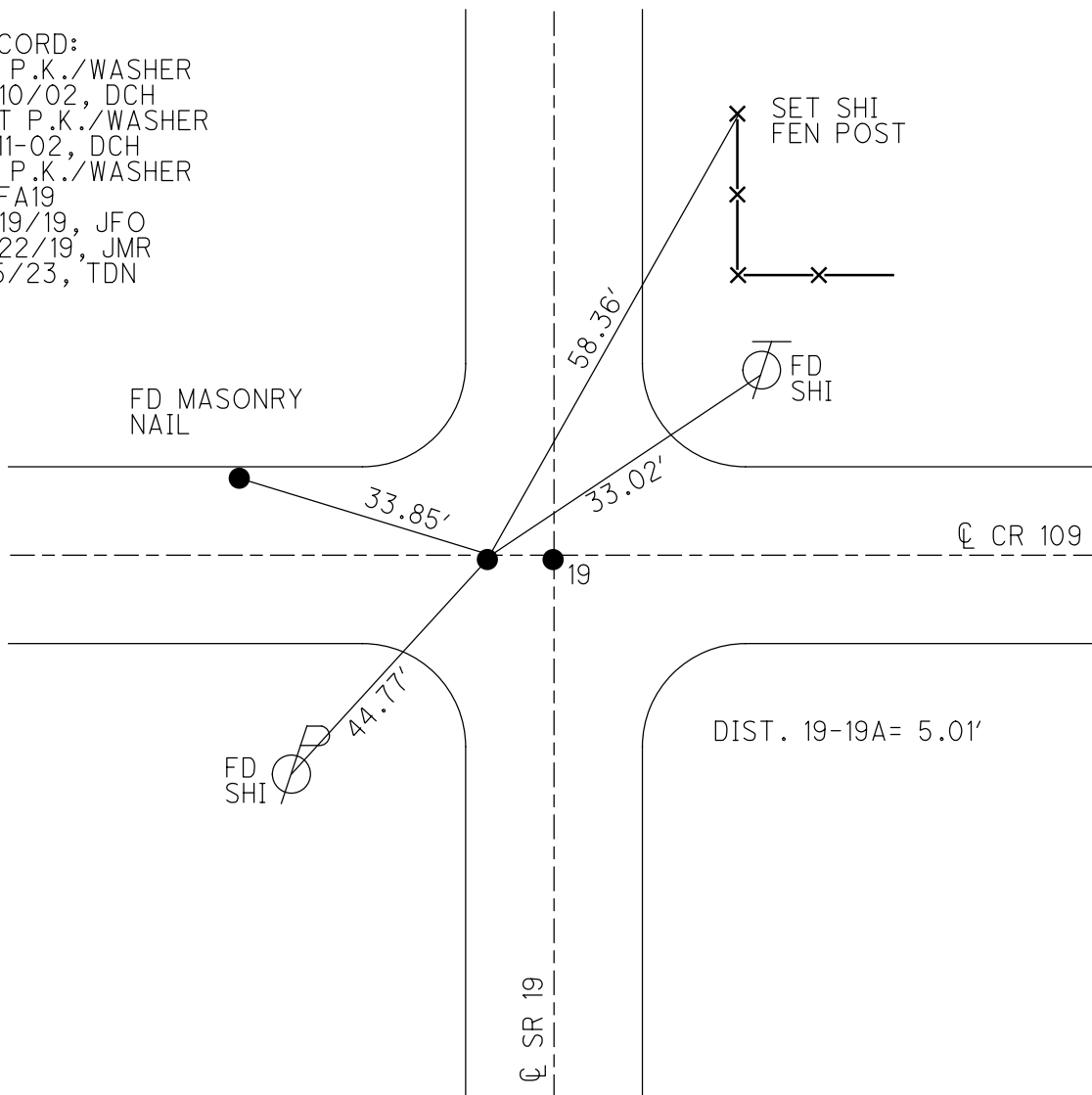
GRID: NORTHING: 637471.142

EASTING: 1794154.407



RECORD:

- FD P.K./WASHER
- 4/10/02, DCH
- SET P.K./WASHER
- 6-11-02, DCH
- FD P.K./WASHER
- REFA19
- 3/19/19, JFO
- 8/22/19, JMR
- 1/5/23, TDN



O.D.O.T. DISTRICT 2 SURVEY OFFICE (USE ONLY)

PERSONNEL _____

REFERENCE NO. 19 A

SHEET 5 OF 16

NOTES CANTERBURY

DATE 5/4/07

ROUTE SR 19

H.C. HOMAN

WEATHER SUNNY

COUNTY SANDUSKY

R.C. SAPP

TEMP. 50°

TOWNSHIP SANDUSKY

SECTION 9

DWG BY AUBLE

PID 107060

T 5 N R 15 E

TYPE MONUMENT P.K./WASHER

ON SURFACE - ~~BELOW~~ ON

OFFSET 5' LT : ~~RT~~

- TO - EDGE PAVEMENT

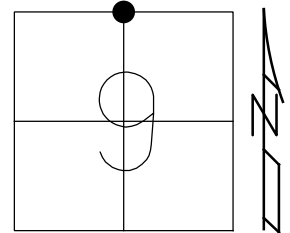
STATION: 741+12

HORZ.DATUM: NAD83 (2011)

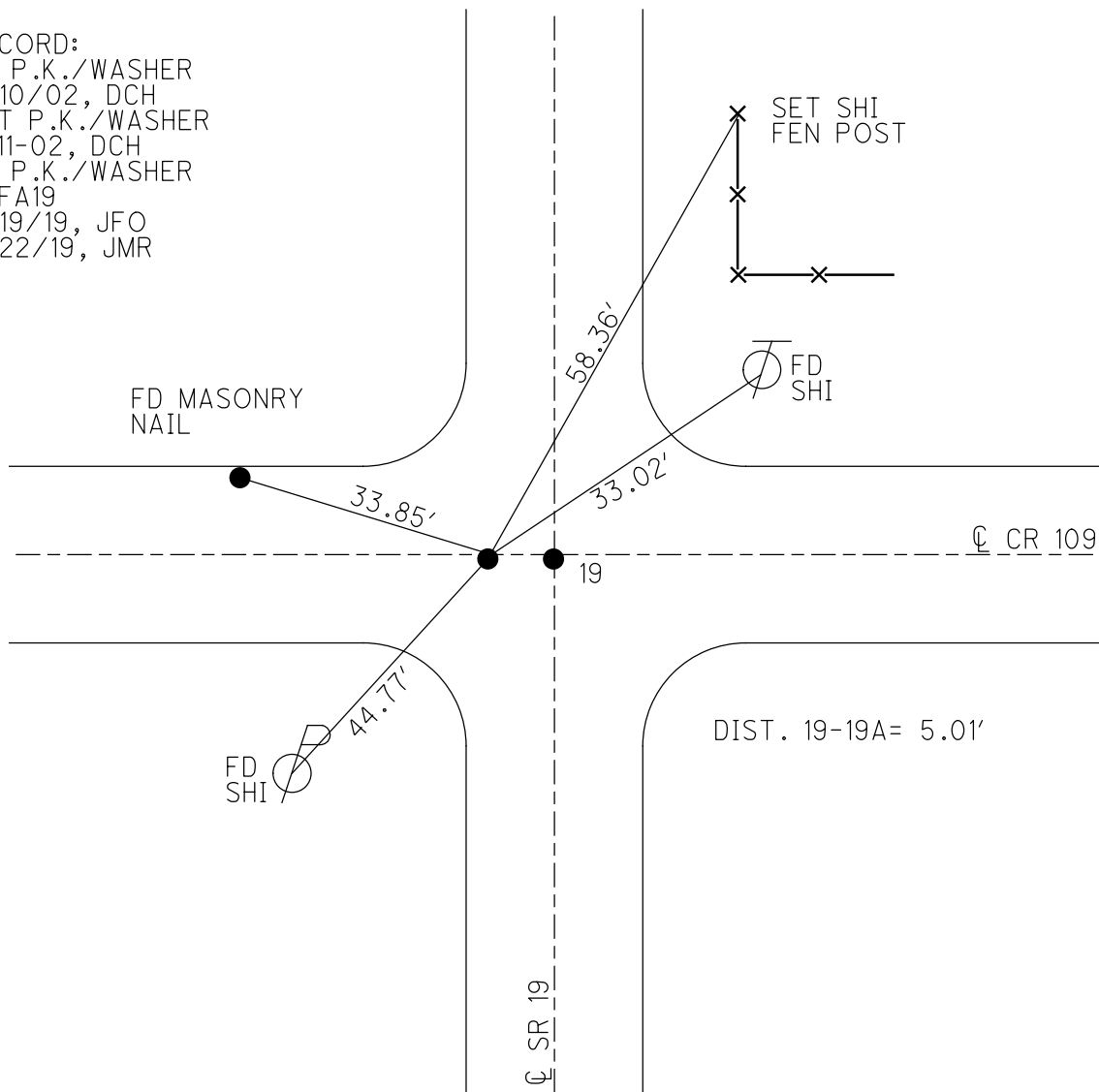
GEOID: 2012A

GRID: NORTHING: 637471.142

EASTING: 1794154.407



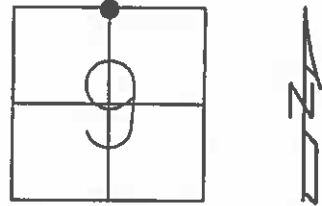
RECORD:
 FD P.K./WASHER
 4/10/02, DCH
 SET P.K./WASHER
 6-11-02, DCH
 FD P.K./WASHER
 REFA19
 3/19/19, JFO
 8/22/19, JMR



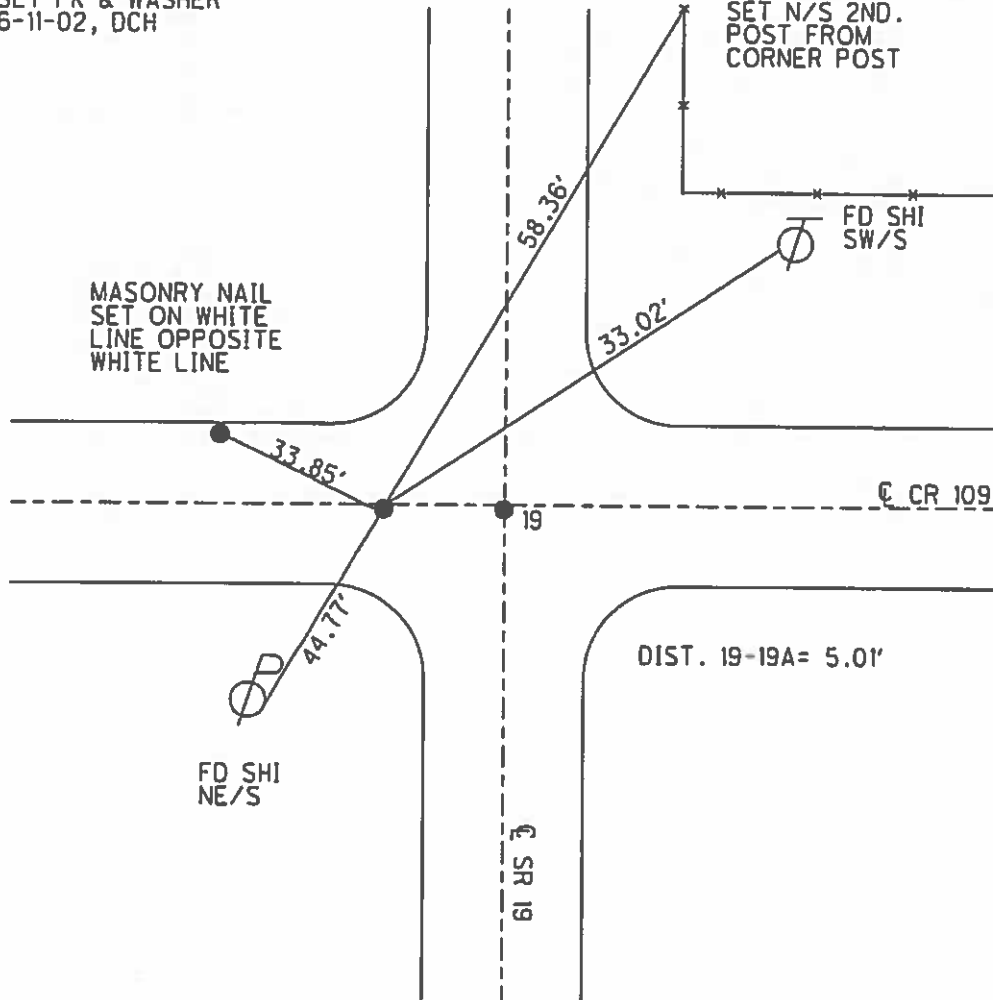
O.D.O.T. DISTRICT 2 SURVEY OFFICE (USE ONLY)

PERSONNEL	REFERENCE NO.	19 A	SHEET	2	OF	13
NOTES	CANTERBURY	DATE	5/4/07	ROUTE	SR 19	
H.C.	HOMAN	WEATHER	SUNNY	COUNTY	SANDUSKY	
R.C.	SAPP	TEMP.	50°	TOWNSHIP	SANDUSKY	
				SECTION	9	
				T 5 N R 15 E		

TYPE MONUMENT P.K./WASHER
 ON SURFACE - ~~BELOW~~ ON
 LEFT - ☉ PAV'T ~~RIGHT~~ 5'
TO EDGE PAVEMENT
 S.L.M. 741+12
 GPS NORTHING: 637471.192 EASTING: 1794154.383



SET PK & WASHER
6-11-02, DCH



O.D.O.T. DISTRICT 2 SURVEY OFFICE

PERSONNEL

REFERENCE NO. _____

SHEET 3 OF 3

NOTES _____ Rousos _____

DATE 04-10-02

ROUTE SR 19

H.C. _____ Homan _____

WEATHER Sunny

COUNTY Sandusky

R.C. _____ Rousos _____

TEMP. 50°

TOWNSHIP Sandusky

SECTION 9

T 5 N R 15 N

TYPE MONUMENT Both PK's

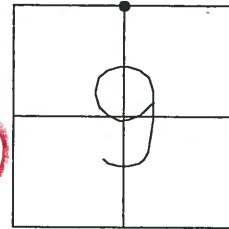
ON SURFACE - ~~BELOW~~ Both On Surface

LEFT - ~~Q~~ PAV'T - ~~RIGHT~~ A-5' LT B-on Both

TO EDGE PAVEMENT

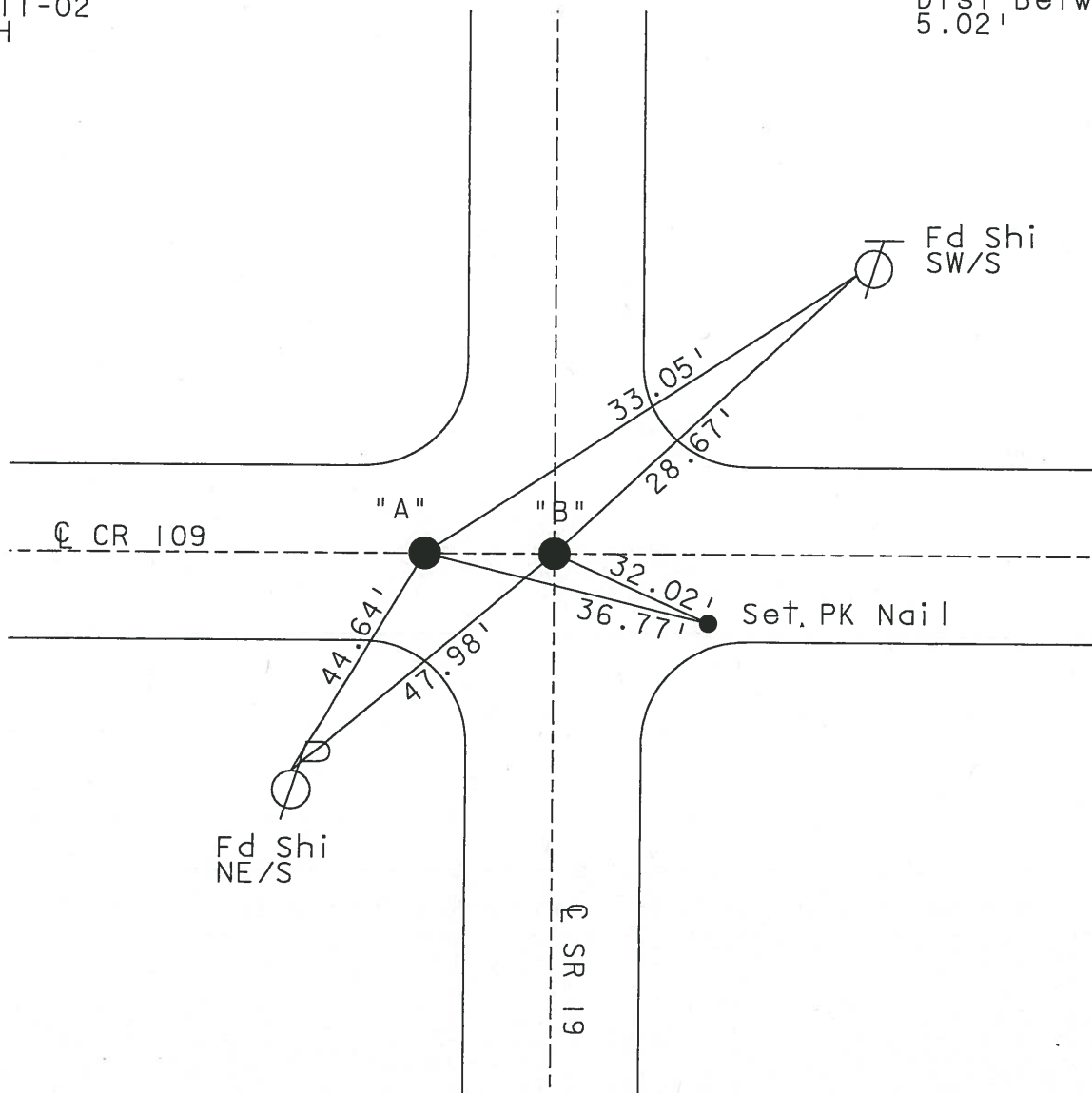
S.L.M. 741+12

19A



Set PK & Washer
6-11-02
DCH

Dist Between Pts
5.02'



O.D.O.T. DISTRICT 2 SURVEY OFFICE

PERSONNEL _____

REFERENCE NO. _____

SHEET _____ OF _____

NOTES TR

H.C. DK

R.C. TR

DATE 4-10-02

WEATHER Sunny

TEMP. 50°

ROUTE SR 19

COUNTY SAN

TOWNSHIP SAN/Rice

SECTION _____

T _____ R _____

TYPE MONUMENT Both PK's

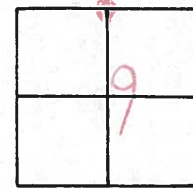
ON SURFACE - BELOW Both on Surface

LEFT - PAV'T. - RIGHT A - 5' LT & 1/8 on & both

TO EDGE PAVEMENT

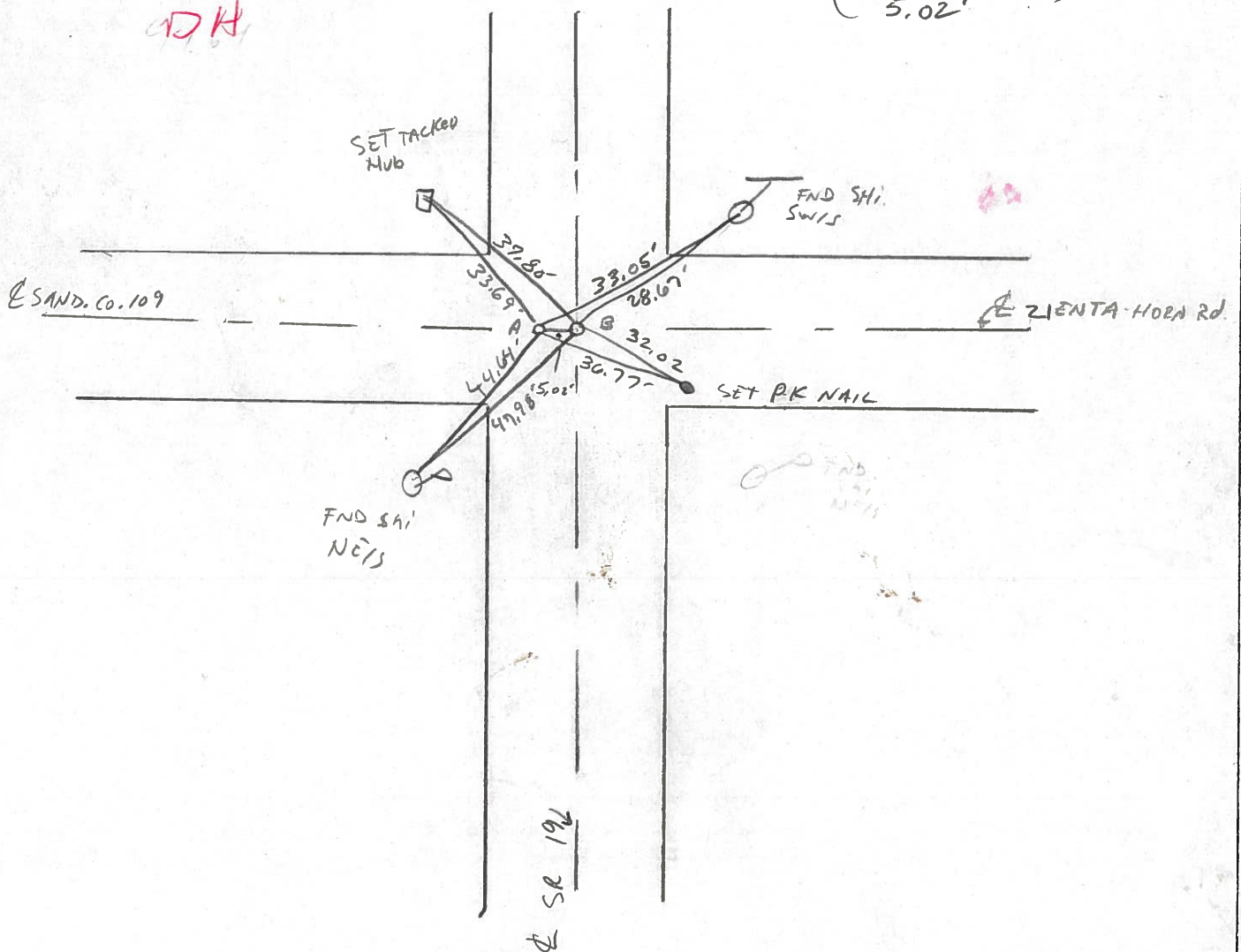
S.L.M. 741+12

19



Set PK & Washers
6-11-02
DK

(Dist Between Pts)
5.02'



O.D.O.T. DISTRICT 2 SURVEY OFFICE

PERSONNEL

REFERENCE NO. _____

SHEET _____ OF _____

NOTES CROWIN

H.C. RIPPLE

R.C. BARBOUR

GEYMAN

DATE 7/09/90

WEATHER SUNNY

TEMP. _____

ROUTE #19

COUNTY SANDUSKY

TOWNSHIP SANDUSKY E

SECTION RICE-9 SANDUSKY

T 5 N R 15 E

TYPE MONUMENT 2 P.K. & WASHER

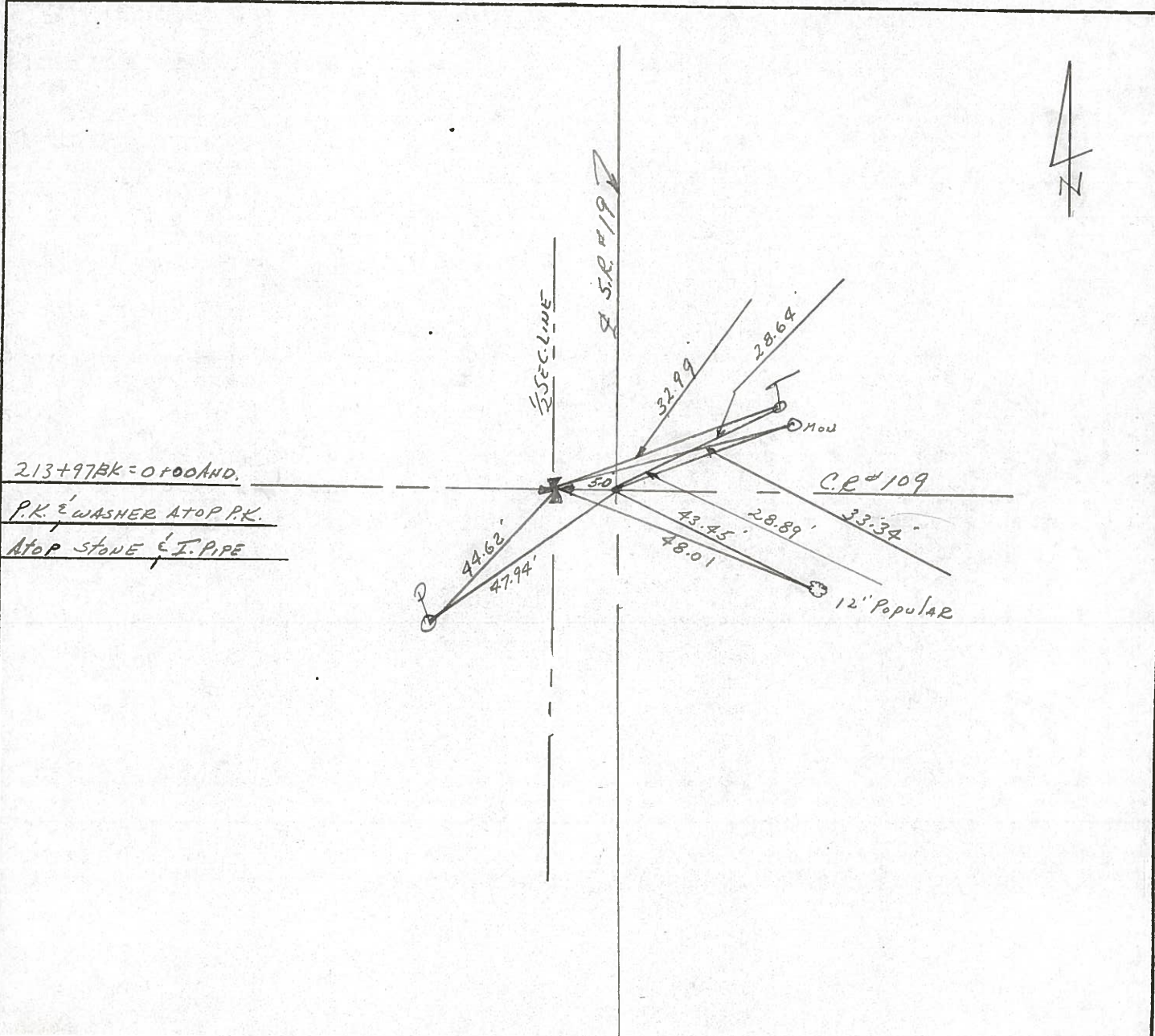
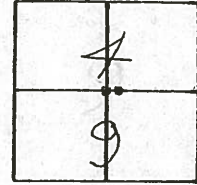
ON SURFACE - BELOW _____

LEFT - CL PAVT. - RIGHT 5' L. & PAINT

TO EDGE PAVEMENT

S.L.M. _____

19



Asceland 2007

PERSONNEL TITLE PERSONNEL TITLE

COUNTY Sandusky DATE

S. R. 19 WEATHER

SEC. 4 Rice Twp. TEMP.

DESCRIPTION U.S. # 20 to Ottawa, Co. Line JOB NO.

LEFT CENTER LINE RIGHT

P.I.

5/14/90 sunny - windy 66°

4' w of P.V.T

HEADLESS P.K. 1" DOWN

P.K. & SHINER

did not find

7/09/90 SUNNY HUMID 89°

P.I.

26 + 29.50

Head off P.K.

32.15.16 32.20.00

33.69.55 33.37

Co. Man.

5.00'

Co. Rd. # 119

42.57 43.99 42.62 not PLUMB Co. Man.

6/26/89 SUNNY 82°

33.34 28.89 MON.

Reset P.K. Nails 9-13-79

19

P.K.s & OWNERS

Co. Rd. # 109

Twp. Rd. # 109

213 + 97

tip of head & Iron Pin P.K. set on top

BLACK GRANITE

BROKEN Co. Man.

55' 68.62' 73.17' 44.62' 48.03' 47.98' 47.94'

32.99.52 33.34 28.95 28.64 T

fence Post out

5/14/90 Windy 66°

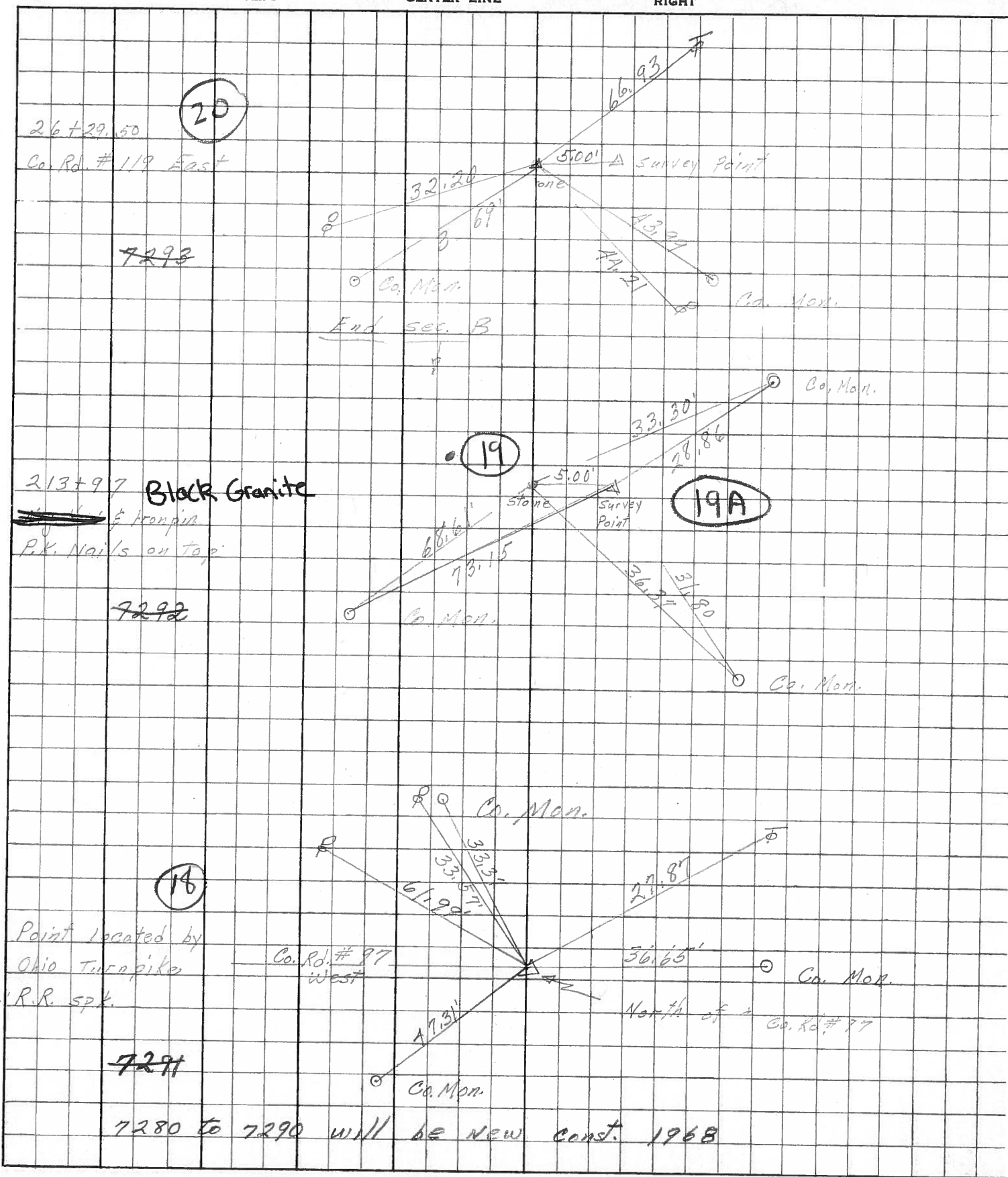
7/09/90 85° SUNNY Humid

12' POPULAR

PERSONNEL	TITLE	PERSONNEL	TITLE
Schneider		Potts	
Mosser			
Barbour			
Redding			

COUNTY Sandusky DATE Feb. 1968
 S. R. # 19 WEATHER
 SEC. North of Fremont TEMP.

DESCRIPTION Ties for Control Points JOB NO.



5m

PERSONNEL TITLE PERSONNEL TITLE

Schneider

Zahn

COUNTY Sandusky

DATE 3

Hawk

Schwartz

S. R. # 19

WEATHER

Mosser

SEC.

TEMP.

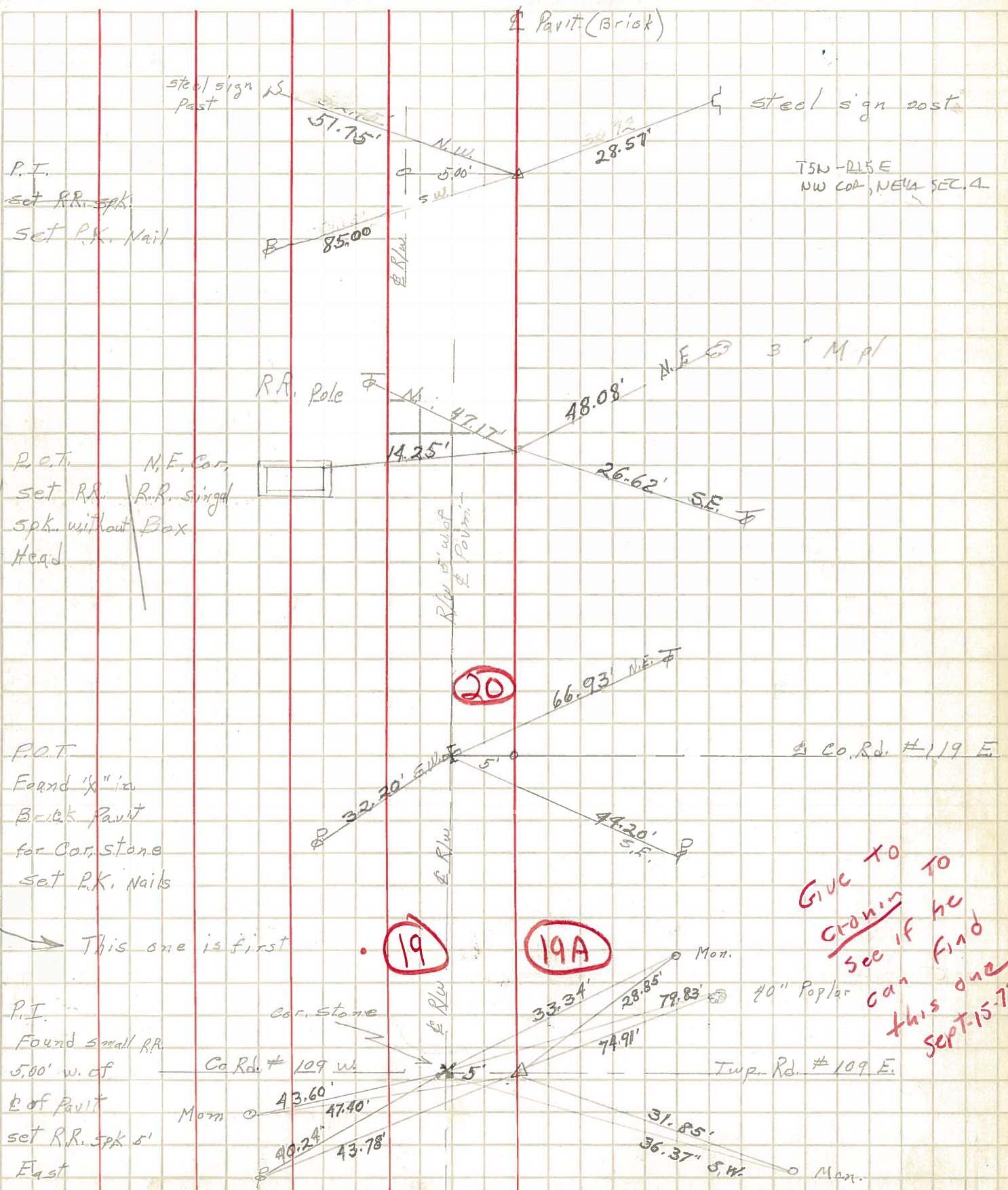
DESCRIPTION Ties for Control Points

JOB NO.

LEFT

CENTER LINE

RIGHT



T5N-R15E
NW COR, NE1/4 SEC. 4

Co. Rd. # 119 E

GIVE TO
CRONIN TO
SEE IF HE
CAN FIND
THIS ONE
SEPT-15-79

P.T.
set RR. spk.
set P.K. Nail

P.O.T.
set RR. spk. without
a Head

P.O.T.
Found 'x' in
Brick Pavit
for Cor. Stone
set P.K. Nails

P.I.
Found small RR.
5.00' w. of
E of Pavit
set RR. spk 5'
East

Co. Rd. # 109 W

Twp. Rd. # 109 E

19

19A

20

This one is first