

O.D.O.T. DISTRICT 2 SURVEY OFFICE (USE ONLY)

PERSONNEL _____

REFERENCE NO. 20

SHEET 7 OF 17

NOTES CANTERBURY

DATE 5/4/07

ROUTE SR 19

H.C. HOMAN

WEATHER SUNNY

COUNTY SANDUSKY

R.C. SAPP

TEMP. 60°

TOWNSHIP SANDUSKY

DWG BY AUBLE

PID 107060

SECTION 4

T 5 N R 15 E

TYPE MONUMENT P.K./WASHER

ON SURFACE - ~~BELOW~~ ON

OFFSET \odot PAVEMENT 4' LT : ~~RT~~

6.9' TO LT EDGE PAVEMENT

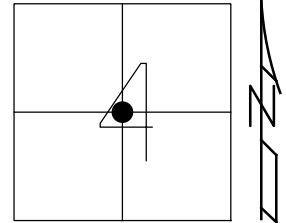
STATION: 767+71

HORIZ.DATUM: NAD83 (2011)

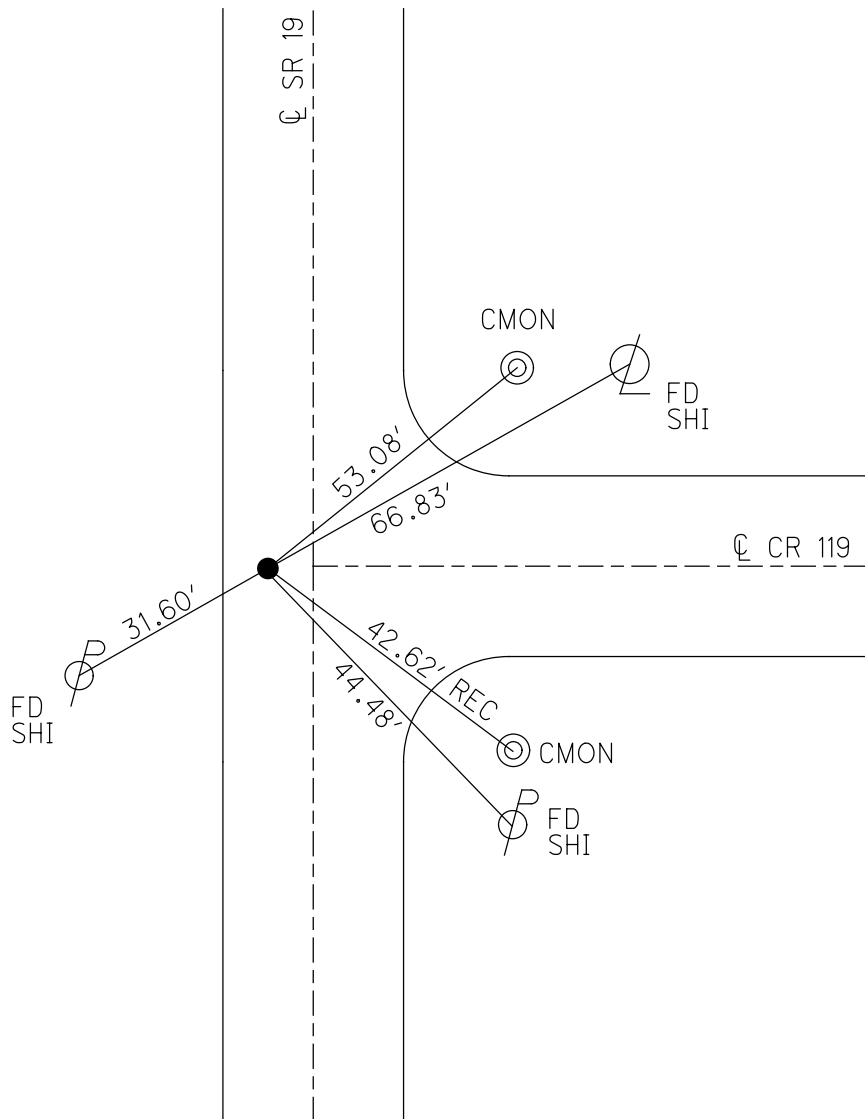
GEOID: NAVD88 2012A

GRID: NORTHING: 640099.433

EASTING: 1794207.034



RECORD: \odot R/W
P.K./WASHER
ATOP P.K. SHANK
ATOP STONE
FD P.K./WASHER
5/4/07, DCH
SET MAG/WASHER
11/8/07, DCH
FD P.K./WASHER
7/9/09
FD MAG/WASHER
REF20
3/19/19, JFO
8/22/19, JMR
1/5/23, TDN



O.D.O.T. DISTRICT 2 SURVEY OFFICE (USE ONLY)

PERSONNEL _____

REFERENCE NO. 20

SHEET 6 OF 16

NOTES CANTERBURY

DATE 5/4/07

ROUTE SR 19

H.C. HOMAN

WEATHER SUNNY

COUNTY SANDUSKY

R.C. SAPP

TEMP. 60°

TOWNSHIP SANDUSKY

SECTION 4

DWG BY AUBLE PID 107060

T 5 N R 15 E

TYPE MONUMENT P.K./WASHER

ON SURFACE - ~~BELOW~~ ON

OFFSET CL PAVEMENT 4' LT : ~~RT~~

6.9' TO LT EDGE PAVEMENT

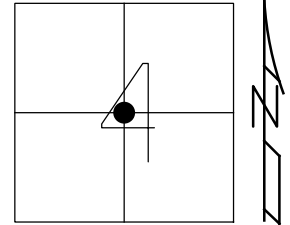
STATION: 767+71

HORIZ.DATUM: NAD83 (2011)

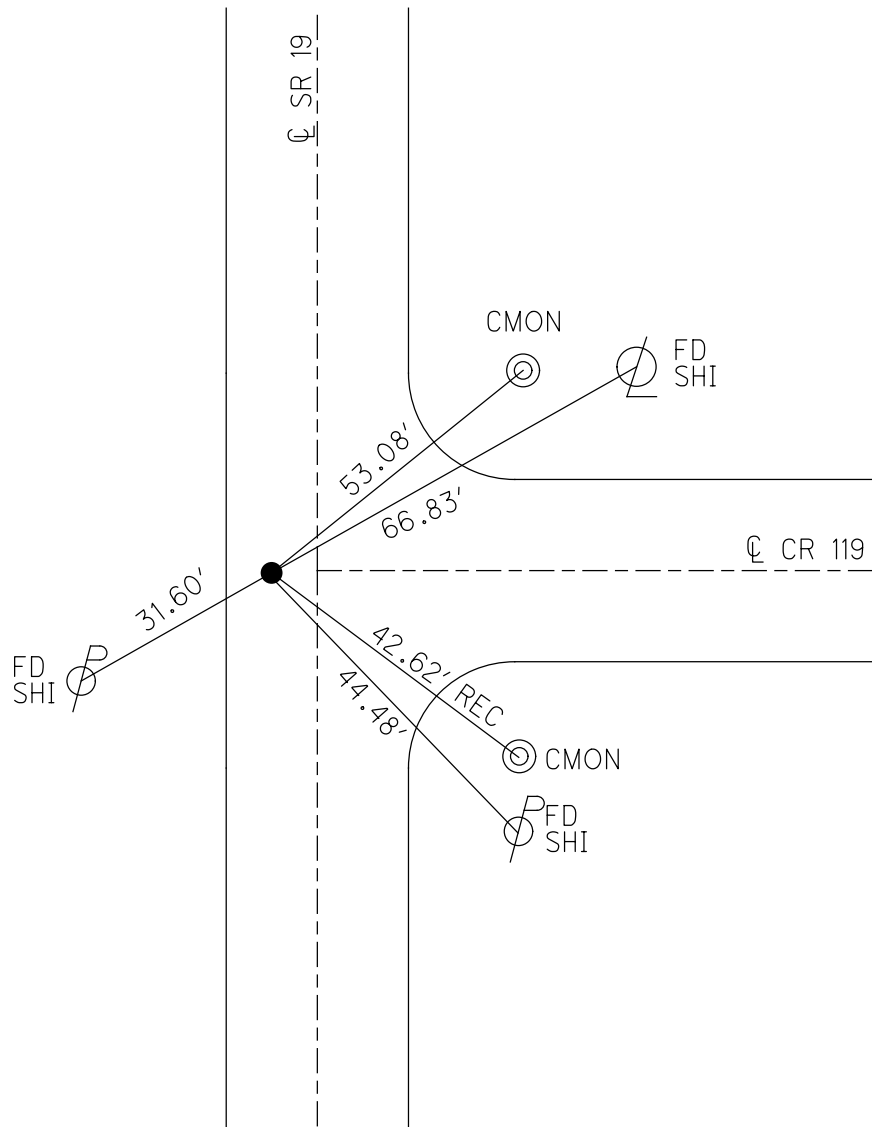
GEOID: 2012A

GRID: NORTHING: 640099.433

EASTING: 1794207.034



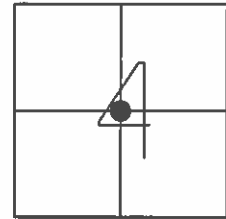
RECORD: CL R/W
P.K./WASHER
ATOP P.K. SHANK
ATOP STONE
FD P.K./WASHER
5/4/07, DCH
SET MAG/WASHER
11/8/07, DCH
FD P.K./WASHER
7/9/09
FD MAG/WASHER
REF20
3/19/19, JFO
8/22/19, JMR



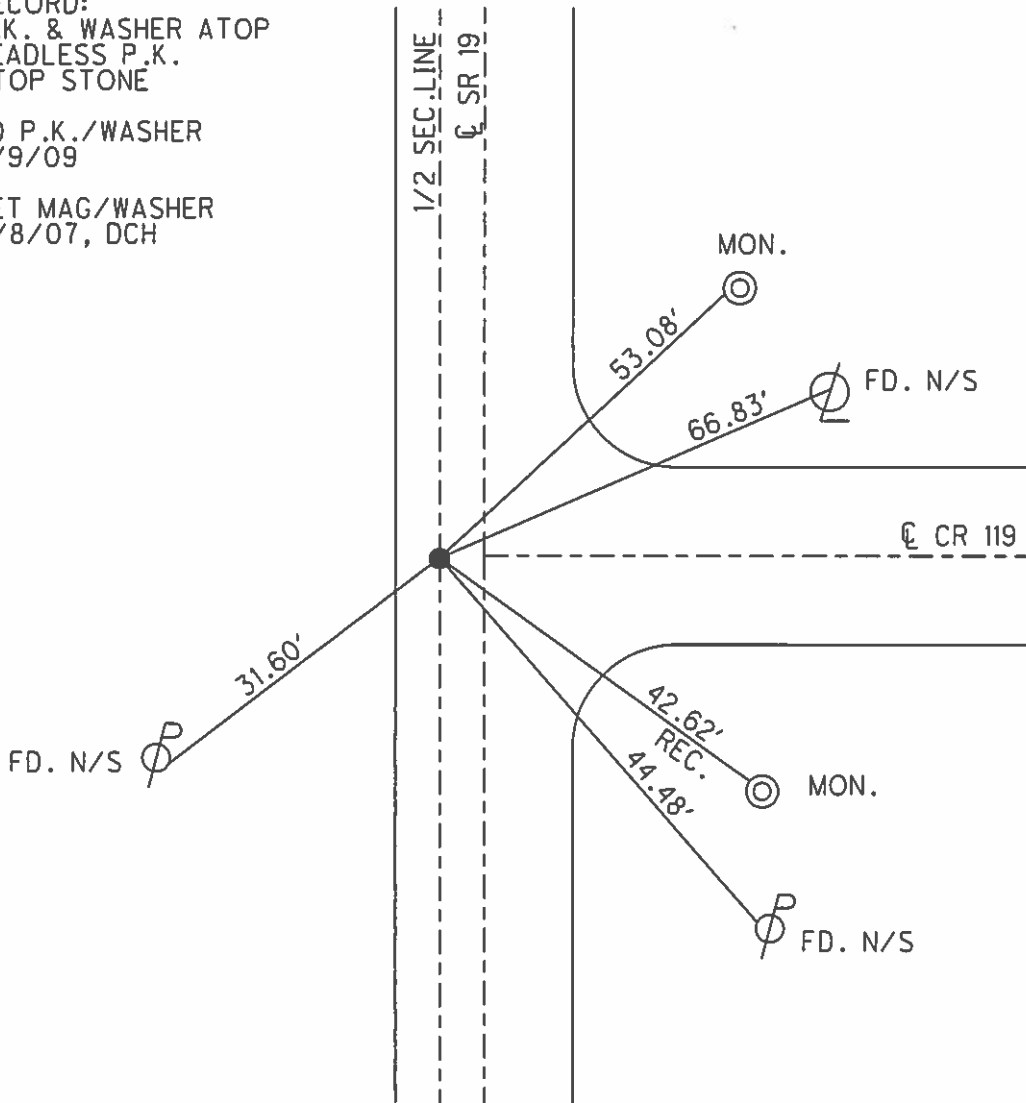
O.D.O.T. DISTRICT 2 SURVEY OFFICE (USE ONLY)

PERSONNEL	REFERENCE NO.	20	SHEET	3	OF	13
NOTES	CANTERBURY	DATE	5/4/07	ROUTE	SR 19	
H.C.	HOMAN	WEATHER	SUNNY	COUNTY	SANDUSKY	
R.C.	SAPP	TEMP.	60°	TOWNSHIP	RICE	
				SECTION	4	
				T	5	N
				R	15	E

TYPE MONUMENT P.K./WASHER
 ON SURFACE - ~~BELOW~~ ON
 LEFT - ☉ PAV'T - ~~RIGHT~~ 4.0'
6.9' TO LT EDGE PAVEMENT
 S.L.M. 767+71
 GPS NORTHING: 640099.417 EASTING: 1794206.967



RECORD:
 P.K. & WASHER ATOP
 HEADLESS P.K.
 ATOP STONE
 FD P.K./WASHER
 7/9/09
 SET MAG/WASHER
 11/8/07, DCH



O.D.O.T. DISTRICT 2 SURVEY OFFICE

PERSONNEL _____

REFERENCE NO. 20

SHEET _____ OF _____

NOTES CROWIN

H.C. RIPPLE

R.C. BARBOUR

GEYMAN

DATE 7/09/90

WEATHER SUNNY

TEMP. 89°

ROUTE #19

COUNTY SANDUSKY

TOWNSHIP RICE

SECTION 4

T 5 N R 15 E

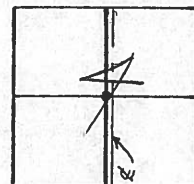
TYPE MONUMENT P.K. & WASHER

ON SURFACE - BELOW _____

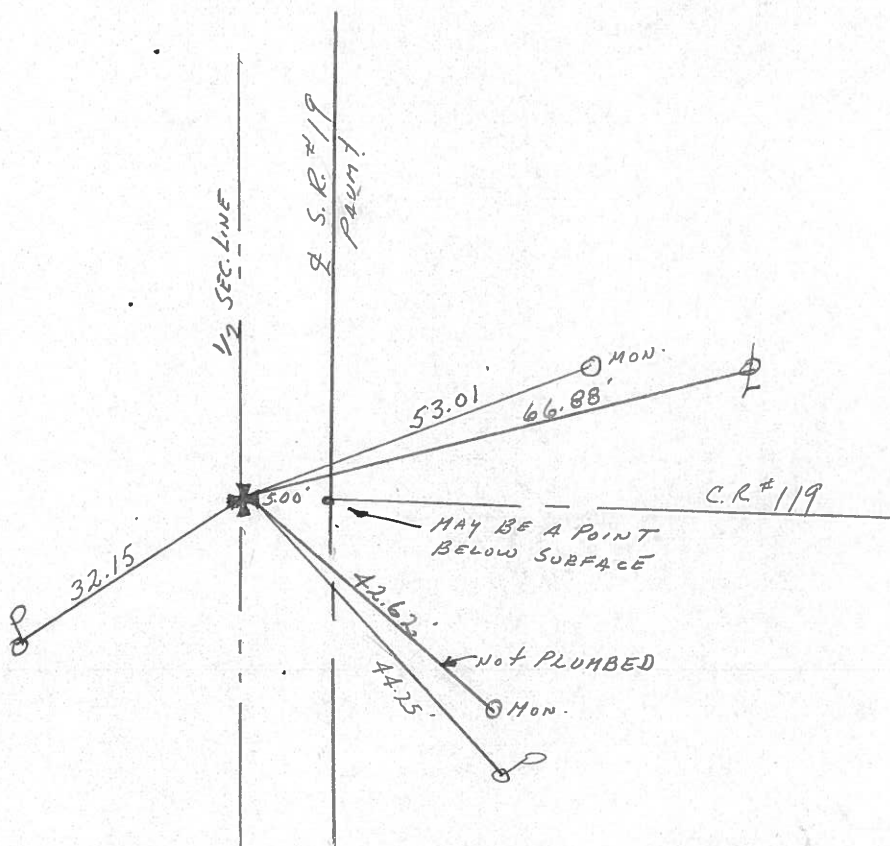
LEFT - € PAW'T. - RIGHT 50

_____ TO _____ EDGE PAVEMENT

S.L.M. _____



26+29.50 (€ SUR.)?
P.K. & WASHER ATOP
HEADLESS P.K. ATOP STONE



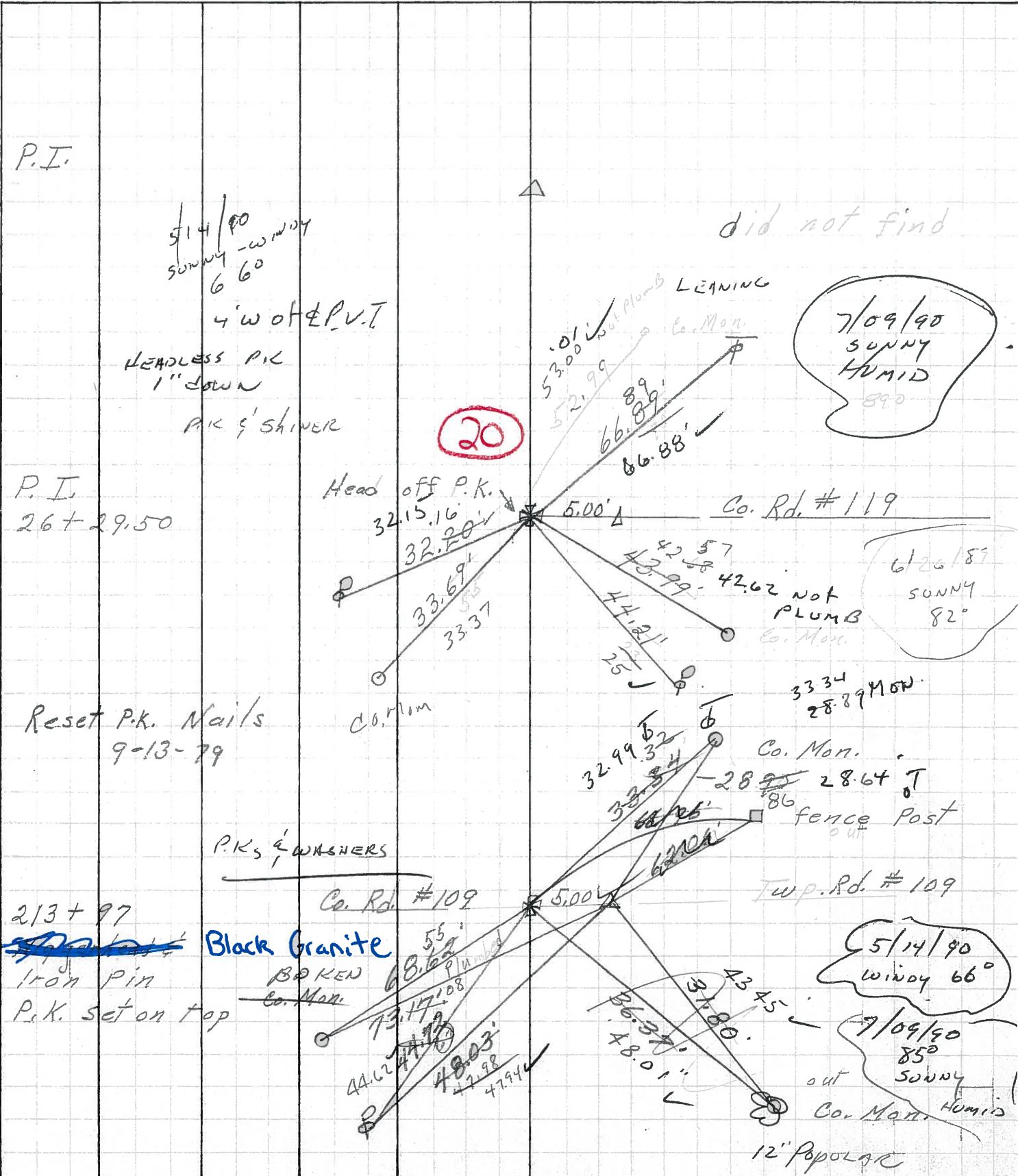
PERSONNEL TITLE PERSONNEL TITLE

COUNTY Sandusky DATE

S. R. 19 WEATHER

SEC. 4 Rice Twp. TEMP.

DESCRIPTION U.S. # 20 to Ottawa, Co. Line JOB NO.



P.I.

5/14/90
SUNNY - windy
66°

4' W of P.V.T

HEADLESS P.K.
1" DOWN

P.K. & SHINER

did not find

7/09/90
SUNNY
HUMID
89°

P.I.

26 + 29.50

Head off P.K.

32.15.16

32.20

33.69

33.37

Co. Mon.

Co. Rd. #119

5.00'

42.57

43.99

44.21

25

6/26/87
SUNNY
82°

33.34
28.89 MON.

Reset P.K. Nails

9-13-79

Co. Mon.

32.99

32.84

32.99

32.84

28.64 T
fence Post

P.K.s & WASHERS

Co. Rd. #109

5.00'

Twp. Rd. #109

213 + 97

Black Granite

BOKEN

Co. Mon.

55'

68.62

73.17

48.03

47.98

47.94

5/14/90
WINDY 66°

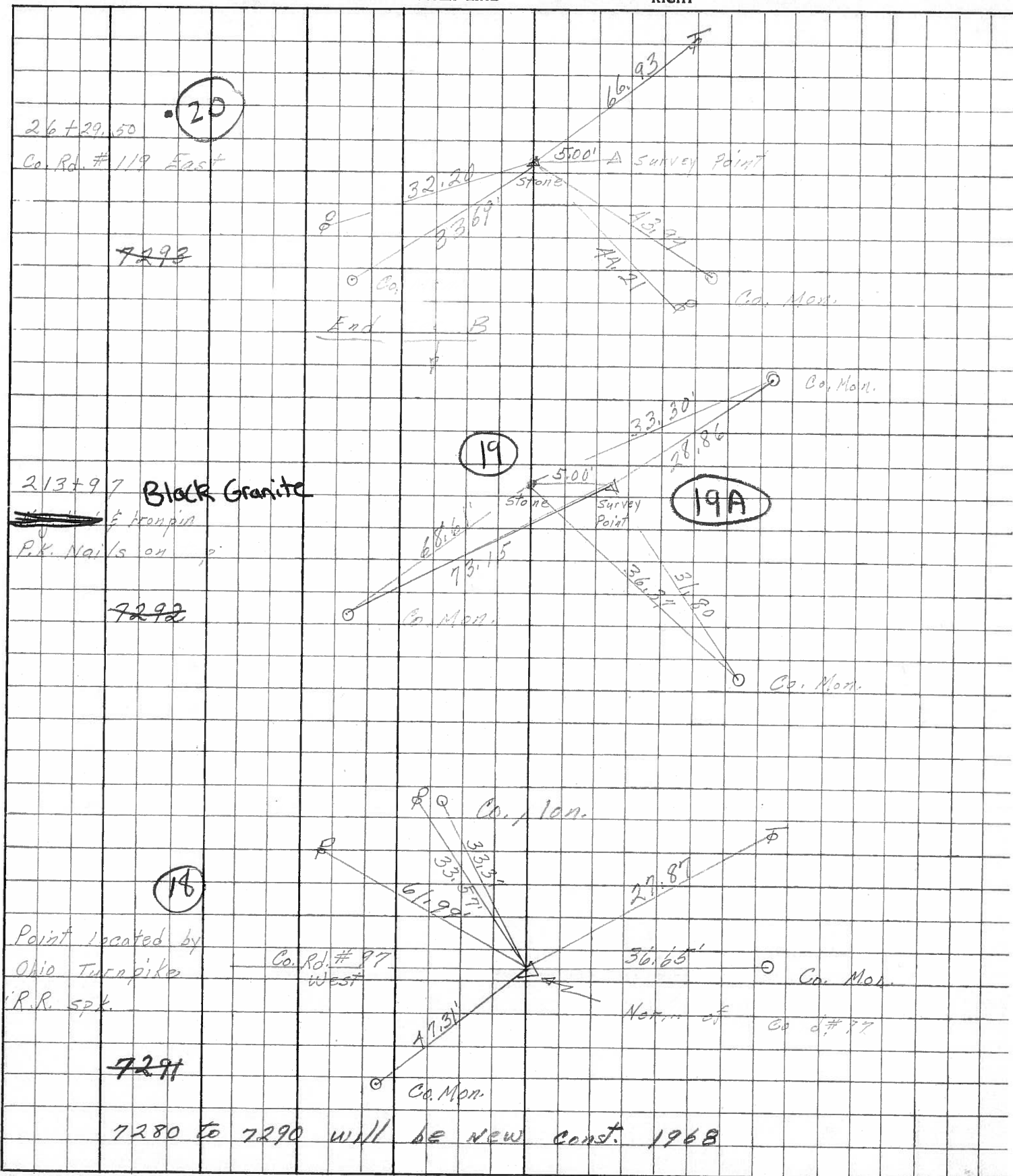
7/09/90
85°
SUNNY
Humid

12" POPULAR

PERSONNEL	TITLE	PERSONNEL	TITLE
Schneider		Potts	
Mosser			
Barbour			
Redding			

COUNTY Sandusky DATE Feb. 1968
 S. R. # 19 WEATHER _____
 SEC. North of TEMP. _____

DESCRIPTION Ties for Control Point JOB NO. _____



PERSONNEL TITLE PERSONNEL TITLE

Schneider

Zahn

COUNTY Sandusky

DATE 3

Hawk

Schwartz

S. R. # 19

WEATHER

Mosser

SEC.

TEMP.

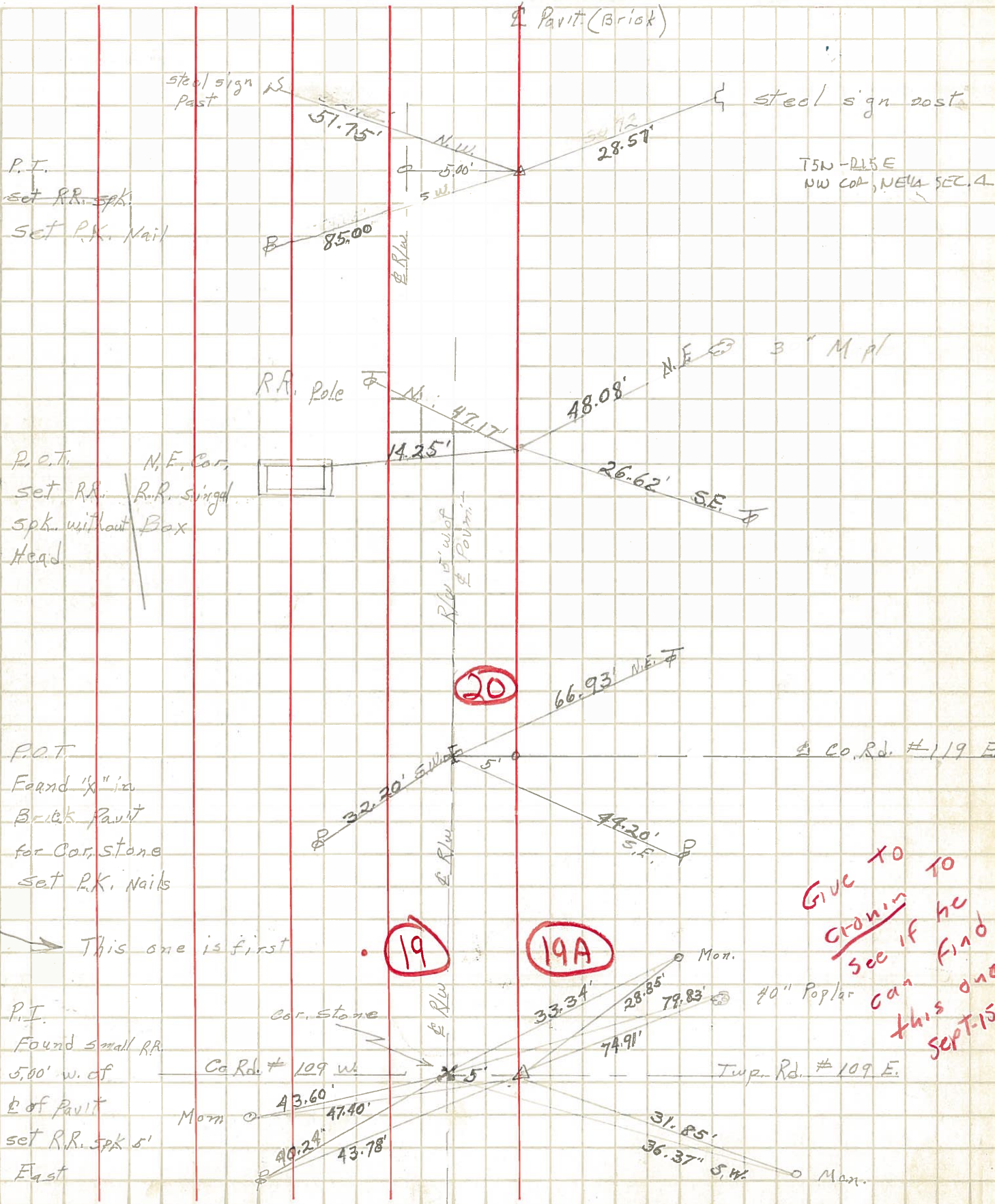
DESCRIPTION Ties for Control Points

JOB NO.

LEFT

CENTER LINE

RIGHT



T5N-R15E NW COR, NE1/4 SEC. 4

Co. Rd. # 119 E

GIVE TO Cronin TO see if he can find this one SEPT-15-79

This one is first

P.I. Found small RR 5,00' w. of Pavit set RR. spk 5' East

P.O.T. Found 1/2" in Brick Pavit for Cor. Stone set P.K. Nails

P.O.T. N.E. Cor. set RR. spk. without Box a Head

P.I. set RR. spk. set P.K. Nail

Co. Rd. # 109 W
Morn
43.60'
47.40'
40.24'
43.78'

Mon.
33.34'
28.85'
79.83'
74.91'
31.85'
36.37' S.W.
Morn.

RR. Pole
M.
47.17'
14.25'

N.E. 3" M pl
48.08'

26.62' S.E.

66.93' N.E.

32.20' S.W.

44.20' S.E.

51.75'

N.W.
5.00'

28.57'

85.00'

steel sign post

steel sign post

Pavit (Brick)

E. Rd.

Rd. 1/2' w. of Pavit

E. Rd.

E. Rd.