

O.D.O.T. DISTRICT 2 SURVEY OFFICE (USE ONLY)

PERSONNEL

REFERENCE NO. 21

SHEET 8 OF 17

NOTES CANTERBURY

DATE 5/4/07

ROUTE SR 19

H.C. HOMAN

WEATHER SUNNY

COUNTY SANDUSKY

R.C. SAPP

TEMP. 60°

TOWNSHIP SANDUSKY

SECTION 4

DWG BY AUBLE

PID 107060

T 5 N R 15 E

TYPE MONUMENT R.R. SPIKE

~~ON SURFACE~~ - BELOW 4"

OFFSET \odot PAVEMENT 38.5' LT : ~~RT~~

- TO - EDGE PAVEMENT

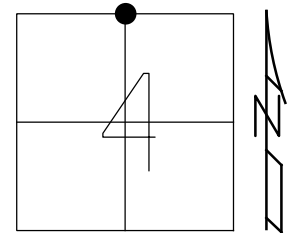
STATION: 792+00

HORZ. DATUM: NAD83 (2011)

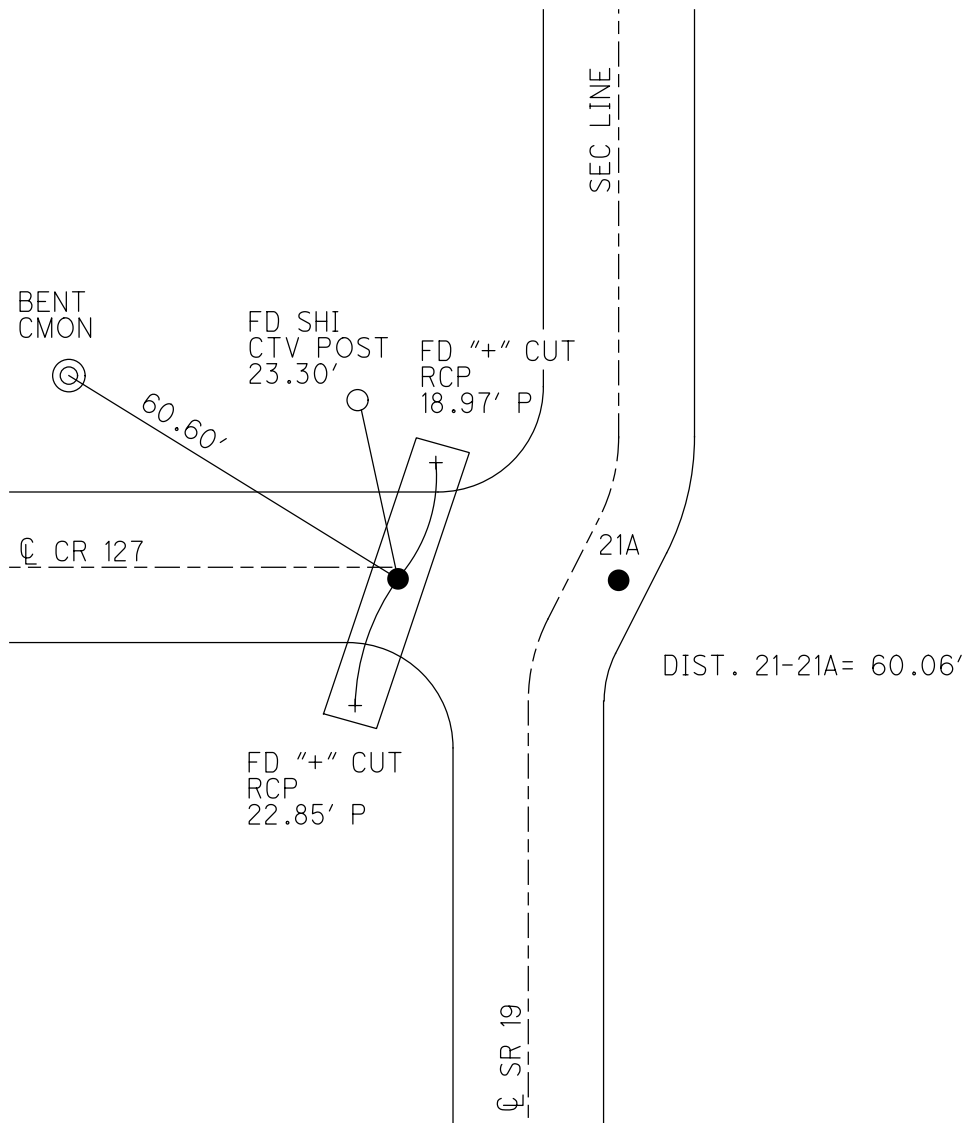
GEOID: NAVD88 2012A

GRID: NORTHING: 642571.297

EASTING: 1794256.148



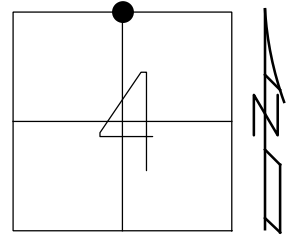
RECORD: \odot R/W
 FD R.R. SPIKE
 SET BY COUNTY
 STONE REMOVED
 DUE TO CULVERT
 7/15/82, CRONIN
 FD R.R. SPIKE
 4" DOWN
 5/4/07, DCH
 FD R.R. SPIKE
 5" DOWN
 REF21
 3/19/19, JFO
 8/22/19, JMR
 1/5/23, TDN



O.D.O.T. DISTRICT 2 SURVEY OFFICE (USE ONLY)

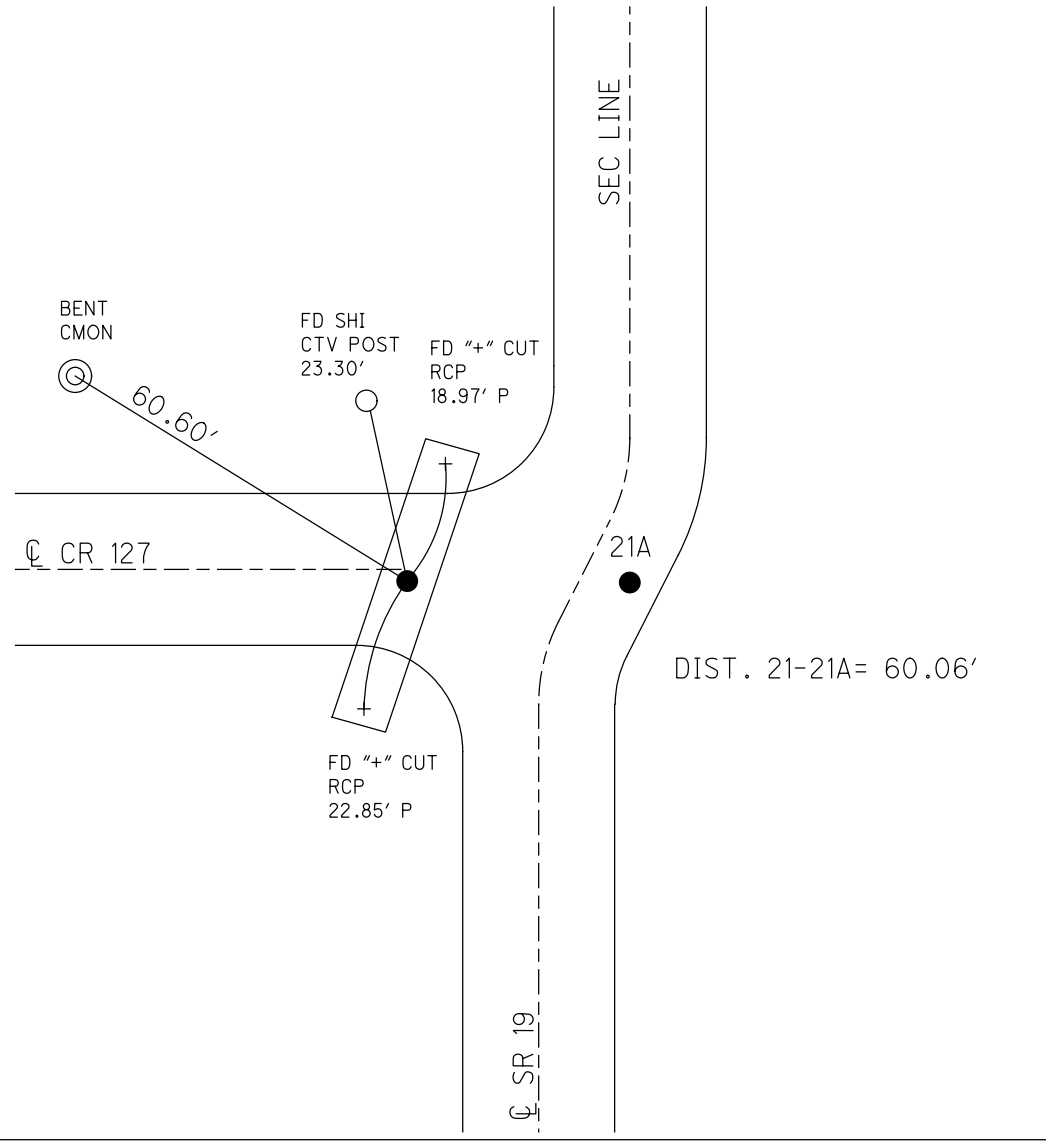
PERSONNEL _____ REFERENCE NO. 21 SHEET 7 OF 16
 NOTES CANTERBURY DATE 5/4/07 ROUTE SR 19
 H.C. HOMAN WEATHER SUNNY COUNTY SANDUSKY
 R.C. SAPP TEMP. 60° TOWNSHIP SANDUSKY
 DWG BY AUBLE PID 107060 SECTION 4
 T 5 N R 15 E

TYPE MONUMENT R.R. SPIKE
~~ON SURFACE~~ - BELOW 4"
 OFFSET $\text{\textcircled{C}}$ PAVEMENT 38.5' LT : RT
- TO - EDGE PAVEMENT
 STATION: 792+00



HORZ. DATUM: NAD83 (2011) GEOID: 2012A
 GRID: NORTHING: 642571.297 EASTING: 1794256.148

RECORD: $\text{\textcircled{C}}$ R/W
 FD R.R. SPIKE
 SET BY COUNTY
 STONE REMOVED
 DUE TO CULVERT
 7/15/82, CRONIN
 FD R.R. SPIKE
 4" DOWN
 5/4/07, DCH
 FD R.R. SPIKE
 5" DOWN
 REF21
 3/19/19, JFO
 8/22/19, JMR

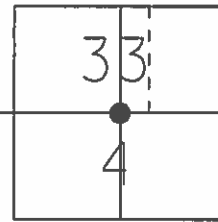


O.D.O.T. DISTRICT 2 SURVEY OFFICE (USE ONLY)

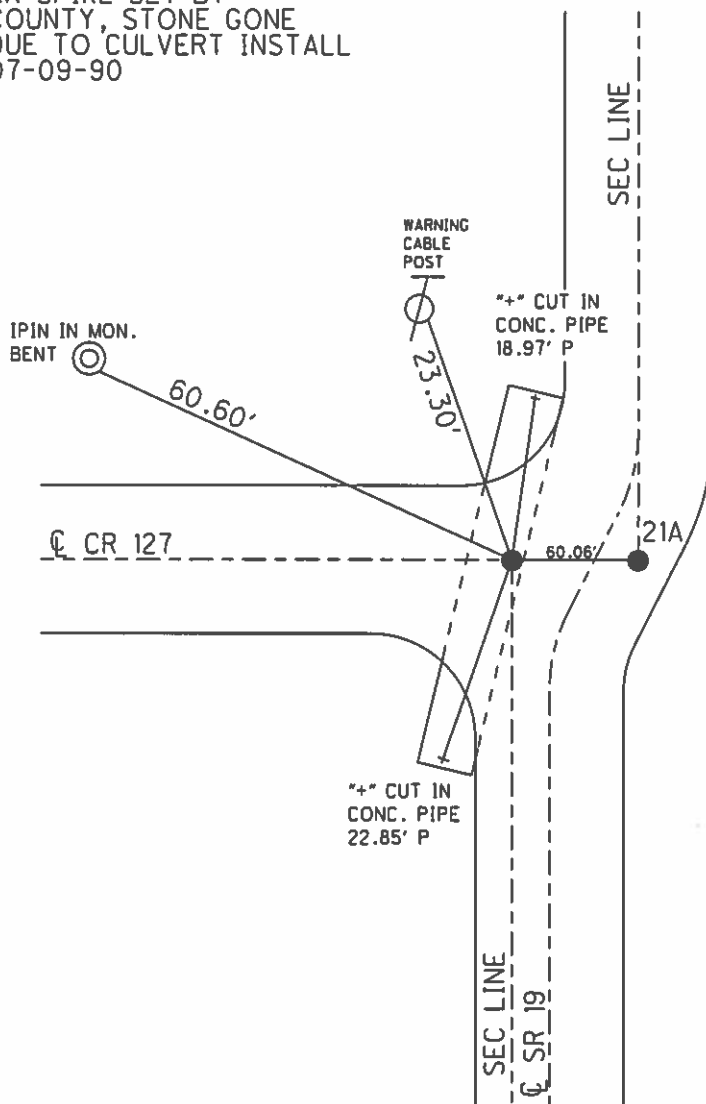
PERSONNEL _____ REFERENCE NO. 21 SHEET 4 OF 13
 NOTES CANTERBURY DATE 5/4/07 ROUTE SR 19
 H.C. HOMAN WEATHER SUNNY COUNTY SANDUSKY
 R.C. SAPP TEMP. 60° TOWNSHIP RICE
 _____ SECTION 33
 _____ T 6 N R 15 E

TYPE MONUMENT R.R. SPIKE
~~ON SURFACE~~ - BELOW 4"
 LEFT - ☉ PAV'T - ~~RIGHT~~ 38.5'
 _____ TO _____ EDGE PAVEMENT
 S.L.M. 792+00
 GPS NORTHING: 642571.363 EASTING: 1794256.155

T6N, R15E
 GOV'T. TWP. LINE
 T5N, R15E



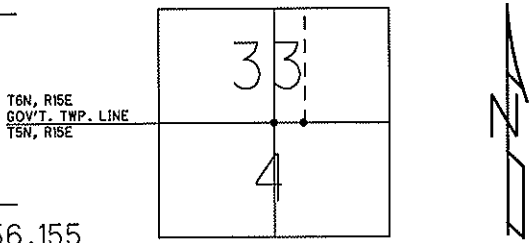
RR SPIKE SET BY
 COUNTY, STONE GONE
 DUE TO CULVERT INSTALL
 07-09-90



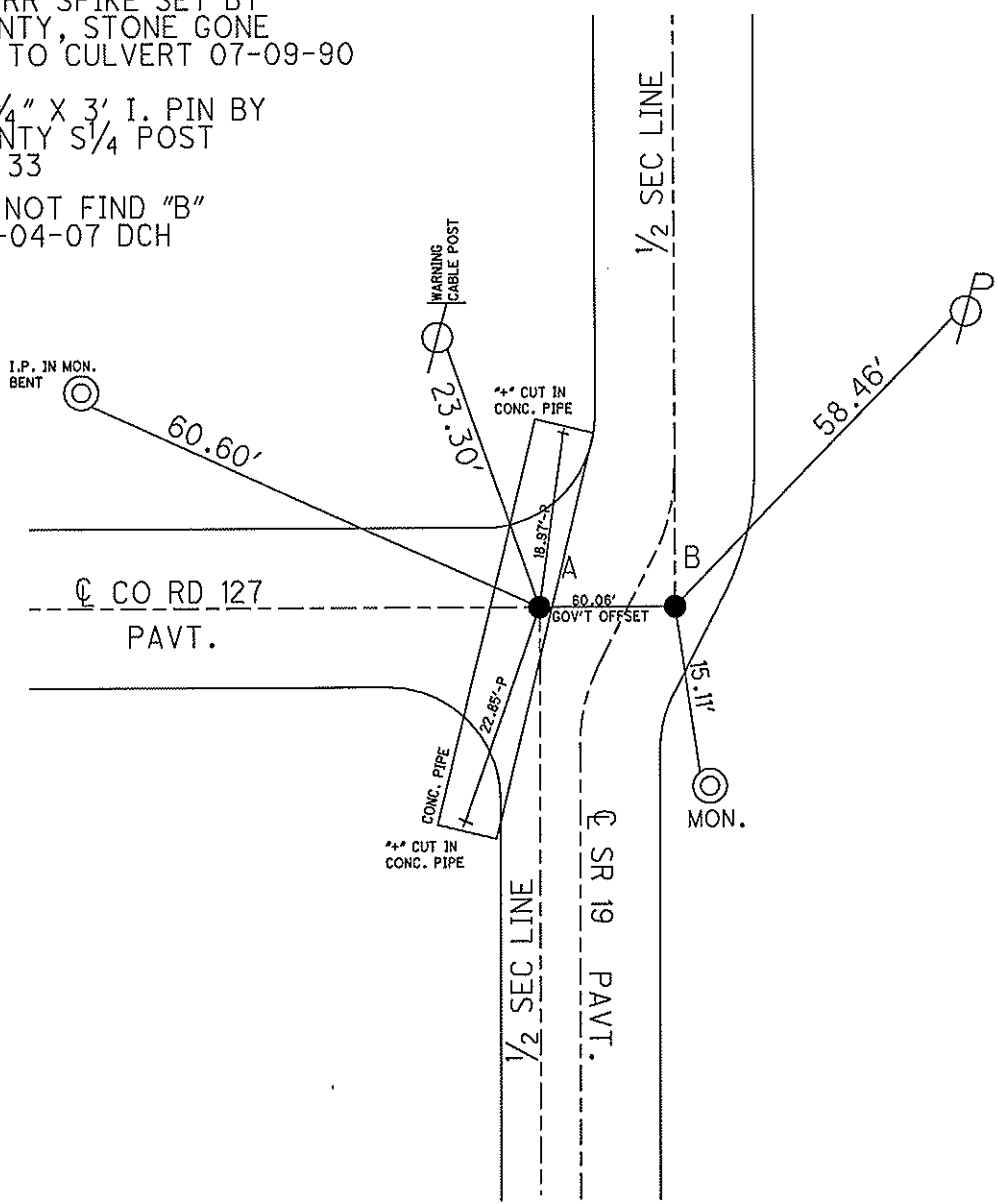
O.D.O.T. DISTRICT 2 SURVEY OFFICE (USE ONLY)

PERSONNEL	REFERENCE NO. <u>21</u>	SHEET <u>4</u> OF <u>12</u>
NOTES <u>CANTERBURY</u>	DATE <u>05-04-07</u>	ROUTE <u>SR 19</u>
H.C. <u>HOMAN</u>	WEATHER <u>SUNNY</u>	COUNTY <u>SANDUSKY</u>
R.C. <u>SAAP</u>	TEMP. <u>60°</u>	TOWNSHIP <u>RICE</u>
		SECTION <u>33</u>
		T <u>6</u> N R <u>15</u> E

TYPE MONUMENT "A"=FD. R.R. SPIKE
~~ON SURFACE~~ - BELOW 4" BELOW
 LEFT - C PAV'T - ~~RIGHT~~ 38.5' LT.
 _____ TO _____ EDGE PAVEMENT
 S.L.M. _____ A= (SV7)
 GPS Northing: 642571.363 Easting: 1794256.155



A - RR SPIKE SET BY COUNTY, STONE GONE DUE TO CULVERT 07-09-90
 B - 3/4" X 3' I. PIN BY COUNTY S 1/4 POST SEC 33
 DID NOT FIND "B" 5-04-07 DCH



O.D.O.T. DISTRICT 2 SURVEY OFFICE

PERSONNEL

REFERENCE NO. 21

SHEET OF

NOTES CRONIN

H.C. RIPPLE

R.C. BARBOUR

GEYMAN

DATE 7/09/90

WEATHER SUNNY

TEMP. 89°

ROUTE #19

COUNTY SANDUSKY

TOWNSHIP RICE

SECTION

T 6 N R 15 E

T 5 N R 15 E

TYPE MONUMENT R.R. SPIKE

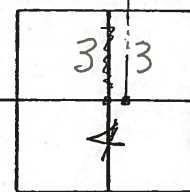
ON SURFACE - BELOW 1" to 2"

LEFT - ☉ PAV'T. - RIGHT 38.5

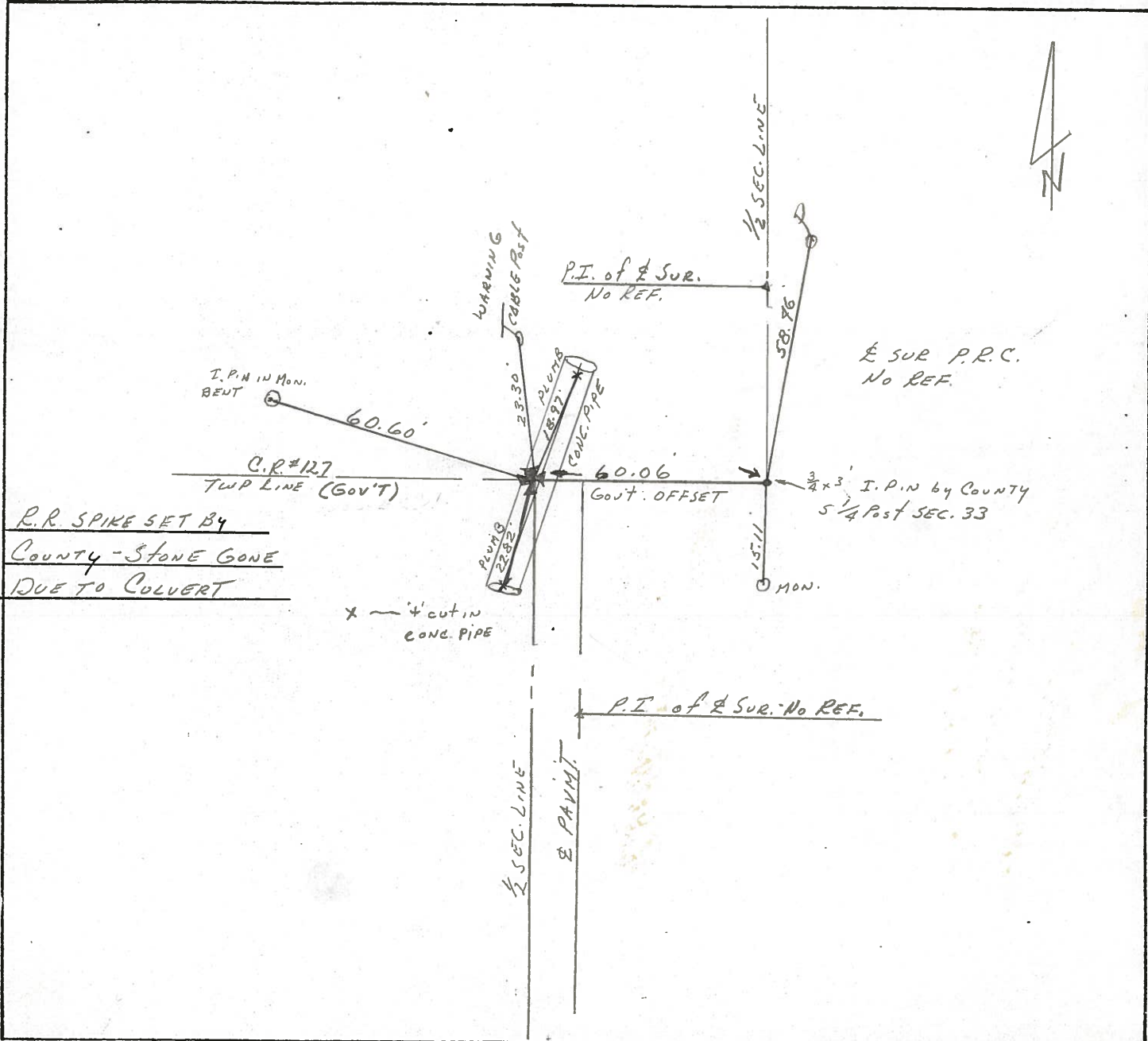
TO EDGE PAVEMENT

S.L.M.

T 6 N, R 15 E
GOV'T TWP LINE
T 5 N, R 15 E



21



R.R. SPIKE SET BY
COUNTY - STONE GONE
DUE TO COLVERT

x — 4' cut in
CONC. PIPE

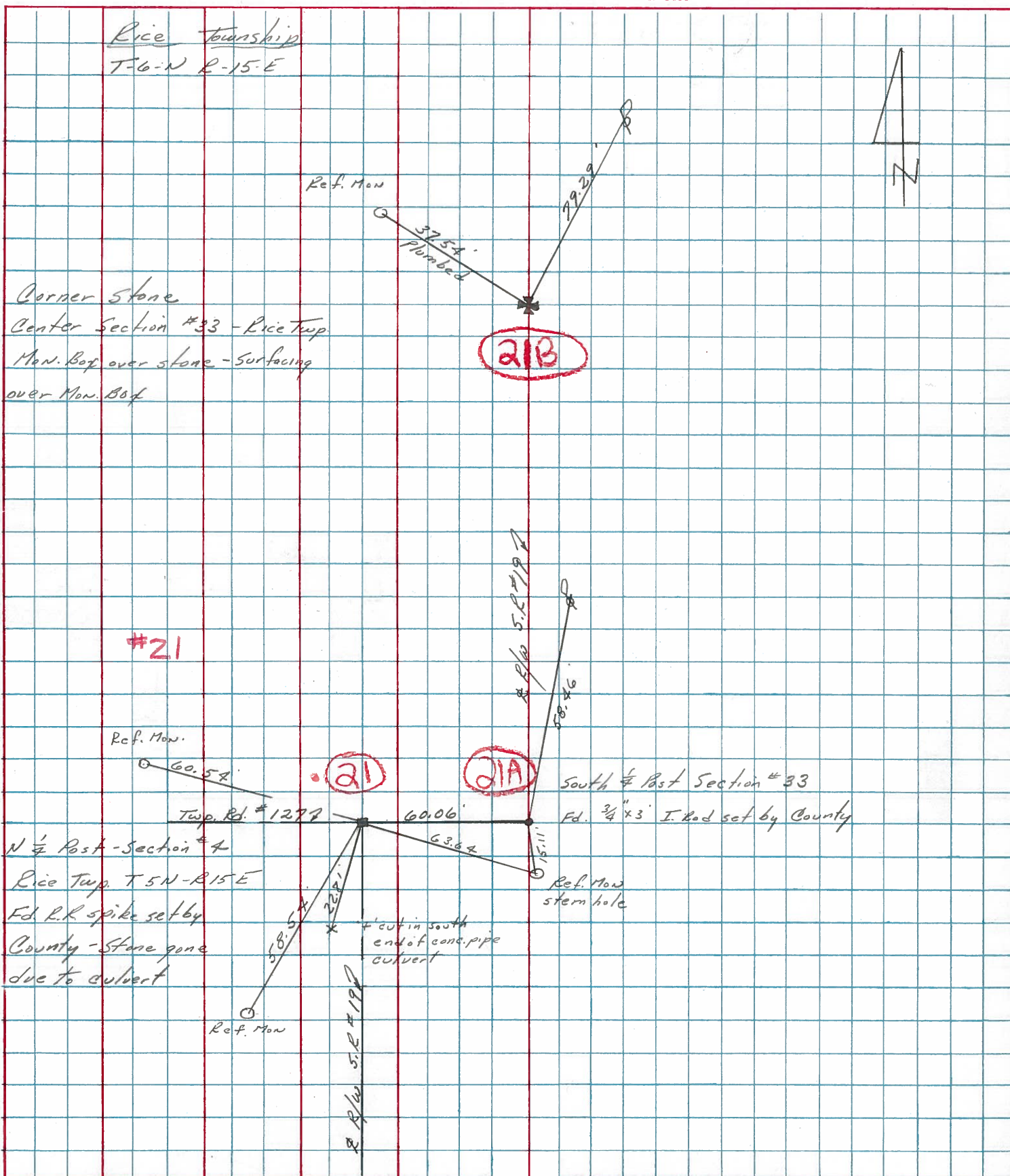
P.I. of 1/2 SUR. No REF.



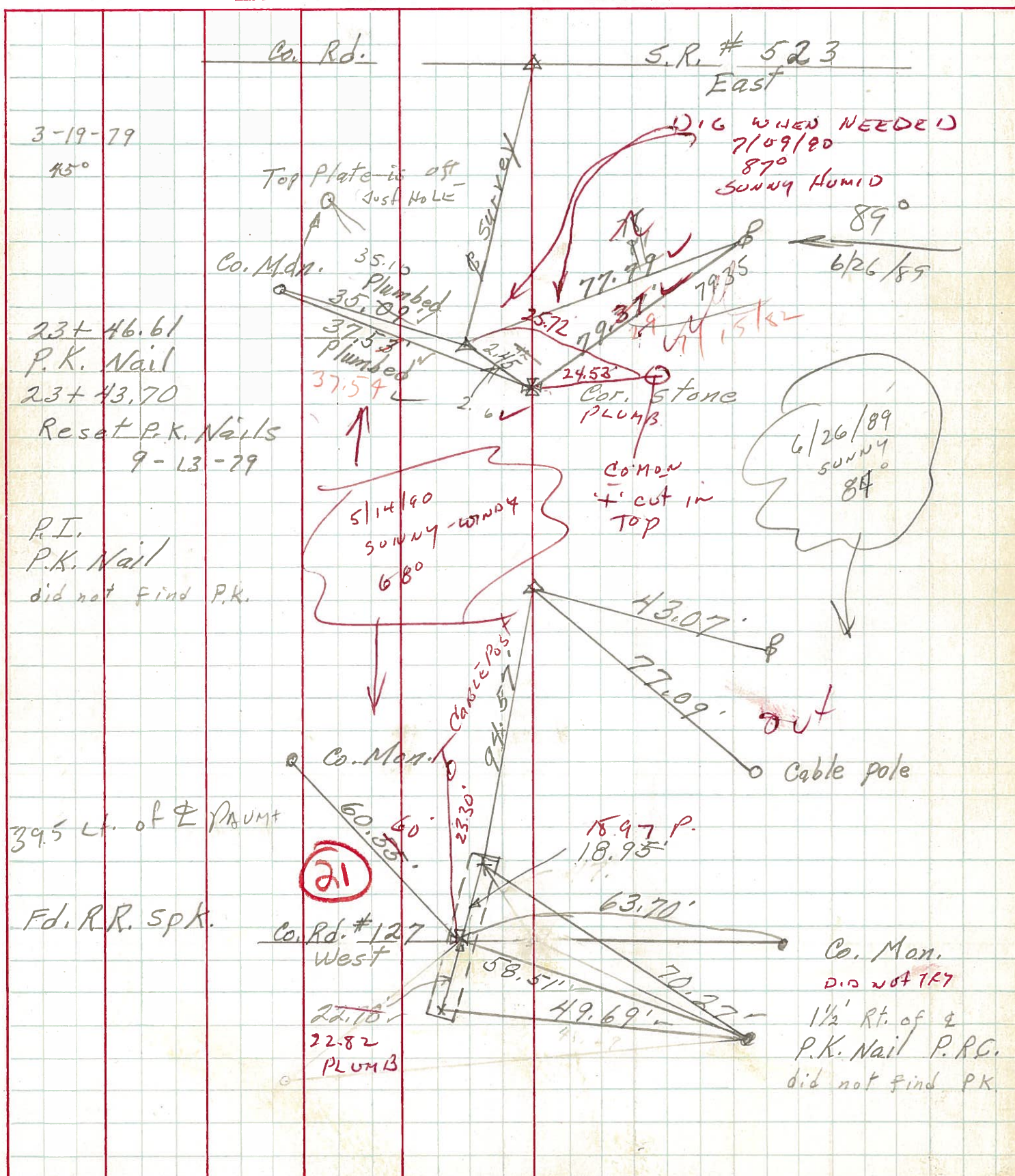
PERSONNEL TITLE PERSONNEL TITLE
 Cronin _____
 Geyman _____
 Barbour _____

COUNTY Sandusky DATE 7/15/82
 S. R. #19 WEATHER sunny-humid
 SEC. Bridge-San. 19-15.32 TEMP. 90°

DESCRIPTION Ties for Control Points LEFT CENTER LINE RIGHT JOB NO.



PERSONNEL _____ TITLE _____ PERSONNEL _____ TITLE _____
 COUNTY Sandusky DATE Dec. 21, 70
 S. R. 19 WEATHER _____
 SEC. 3 & 4 32 & 33 TEMP. _____
 DESCRIPTION U.S. # 20 to Ottawa, Pa. Line JOB NO. _____



PERSONNEL	TITLE	PERSONNEL	TITLE	COUNTY	DATE
<u>Schneider</u>		<u>Potts</u>		<u>Sandusky</u>	<u>Feb. 1968</u>
<u>Mosser</u>				S. R. # <u>19</u>	WEATHER
<u>Barbour</u>				SEC. <u>North of Fremont</u>	TEMP.
<u>Redding</u>					

DESCRIPTION Ties for Control Points JOB NO.

