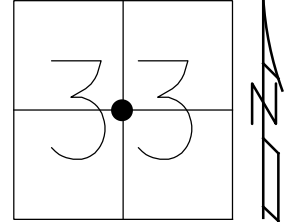


O.D.O.T. DISTRICT 2 SURVEY OFFICE (USE ONLY)

PERSONNEL \_\_\_\_\_ REFERENCE NO. 21 B SHEET 9 OF 16  
 NOTES CANTERBURY DATE 5/7/07 ROUTE SR 19  
 H.C. HOMAN WEATHER SUNNY COUNTY SANDUSKY  
 R.C. SAPP TEMP. 60° TOWNSHIP RICE  
 DWG BY AUBLE PID 107060 SECTION 33  
 T 6 N R 15 E

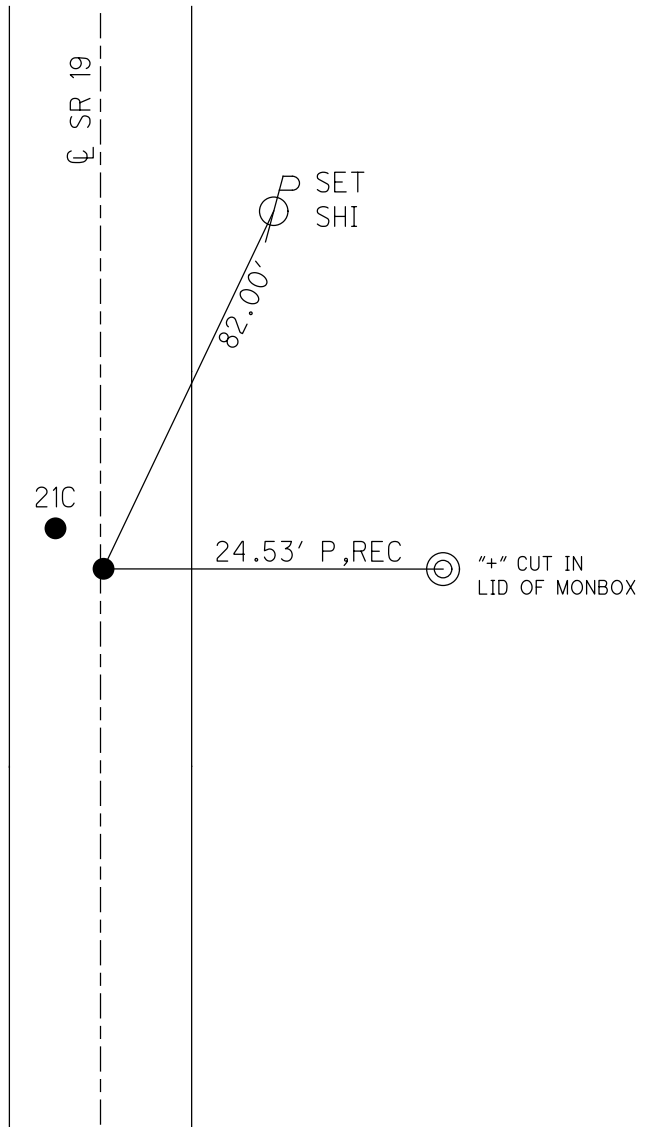
TYPE MONUMENT P.K./WASHER  
 ON SURFACE - ~~BELOW~~ \_\_\_\_\_ ON \_\_\_\_\_  
 OFFSET ☐ PAVEMENT \_\_\_\_\_ ON \_\_\_\_\_ LT : RT  
11.1' TO LT EDGE PAVEMENT  
 STATION: 818+24.87



HORZ.DATUM: NAD83 (2011) GEOID: 2012A  
 GRID: NORTHING: 645214.180 EASTING: 1794317.971

RECORD:  
 FD MONBOX  
 W/P.K./WASHER  
 ATOP STONE  
 7/15/82, CRONIN  
 FD P.K./WASHER  
 7/9/90, CRONIN  
 FD P.K./WASHER  
 5/7/07, DCH  
 SET MAG/WASHER  
 11/8/07, DCH  
 FD MAG/WASHER  
 REFA21  
 3/19/19, JFO  
 8/22/19, JMR

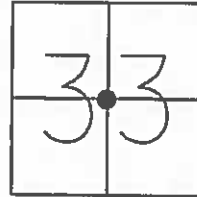
DIST. 21B-21C= 2.46'



O.D.O.T. DISTRICT 2 SURVEY OFFICE (USE ONLY)

PERSONNEL \_\_\_\_\_ REFERENCE NO. 21 B SHEET 6 OF 13  
 NOTES CANTERBURY DATE 5/7/07 ROUTE SR 19  
 H.C. HOMAN WEATHER SUNNY COUNTY SANDUSKY  
 R.C. SAPP TEMP. 60° TOWNSHIP RICE  
 \_\_\_\_\_ SECTION 33  
 \_\_\_\_\_ T 6 N R 15 E

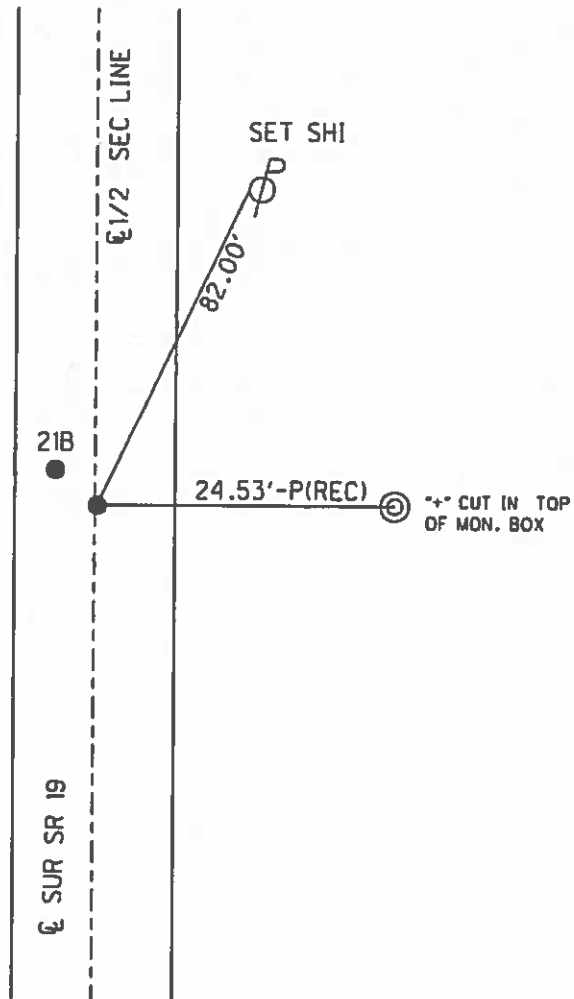
TYPE MONUMENT P.K./WASHER  
 ON SURFACE - ~~BELOW~~ ON \_\_\_\_\_  
~~LEFT~~ - Q PAV'T - ~~RIGHT~~ ON \_\_\_\_\_  
11.1' TOLT EDGE PAVEMENT  
 S.L.M. 818+24.87  
 GPS NORTHING: 645214.231 EASTING: 1794317.93



RECORD:  
 PK/WASHER ATOP STONE  
 IN MON. BOX  
 1970

FD P.K./WASHER  
 7/9/90

SET MAG/WASHER  
 11/8/07, DCH



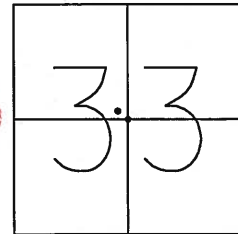
DIST. 21B-21C = 2.46'

O.D.O.T. DISTRICT 2 SURVEY OFFICE (USE ONLY)

PERSONNEL _____	REFERENCE NO. _____	SHEET <u>5</u> OF <u>12</u>
NOTES <u>CANTERBURY</u>	DATE <u>05-07-07</u>	ROUTE <u>SR 19</u>
H.C. <u>HOMAN</u>	WEATHER <u>SUNNY</u>	COUNTY <u>SANDUSKY</u>
R.C. <u>SAPP</u>	TEMP. <u>+60°</u>	TOWNSHIP <u>RICE</u>
_____	_____	SECTION <u>33</u>
_____	_____	T <u>6</u> N R <u>15</u> E

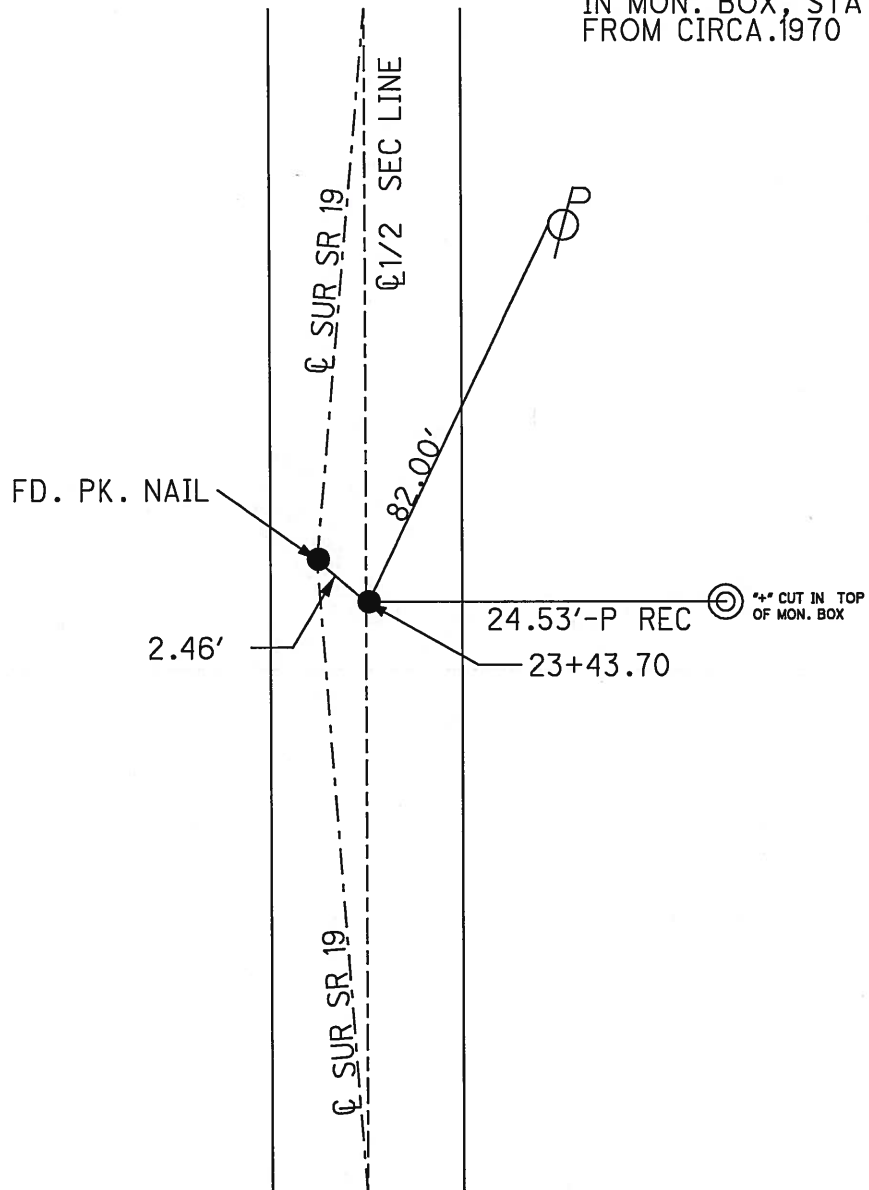
TYPE MONUMENT FD. PK/WASHER  
 ON SURFACE - ~~BELOW~~ ON SURFACE  
~~LEFT~~ - C PAV'T - ~~RIGHT~~ ON CL. SR#19  
A=11.1' TO LT. EDGE PAVEMENT  
 S.L.M. 23+43.70 (SV8)  
 GPS Northing: 645214.231 Easting: 1794317.93

**21B**



PK & WASHER  
07-09-90  
SET MAG/WASHER  
11-08-07 DCH

NOTE: PK/WASHER ATOP STONE  
IN MON. BOX, STATIONING  
FROM CIRCA.1970



⊙ \*\* CUT IN TOP  
OF MON. BOX

O.D.O.T. DISTRICT 2 SURVEY OFFICE

PERSONNEL \_\_\_\_\_

REFERENCE NO. \_\_\_\_\_

SHEET \_\_\_\_\_ OF \_\_\_\_\_

NOTES CROWN

H.C. RIPPLE

R.C. BARBOUR

GEYMAN

DATE 7/09/90

WEATHER SUNNY

TEMP. 89°

ROUTE #19

COUNTY SANDUSKY

TOWNSHIP RICE

SECTION 33

T 6 N R 15 E

TYPE MONUMENT P.K.s & WASHERS

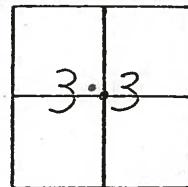
ON SURFACE - BELOW 1" to 2"

LEFT - Q PAV'T. - RIGHT \_\_\_\_\_

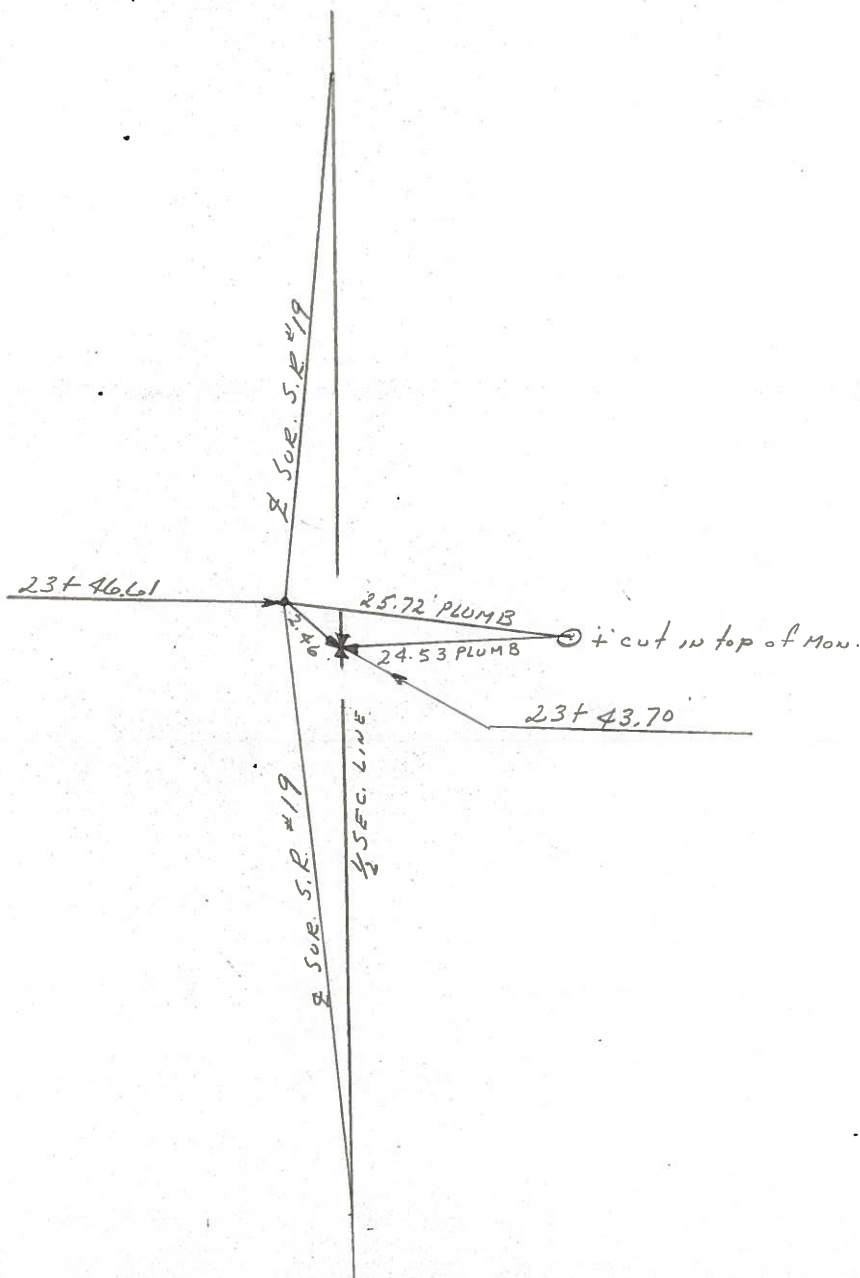
TO \_\_\_\_\_ EDGE PAVEMENT

S.L.M. \_\_\_\_\_

**21B**



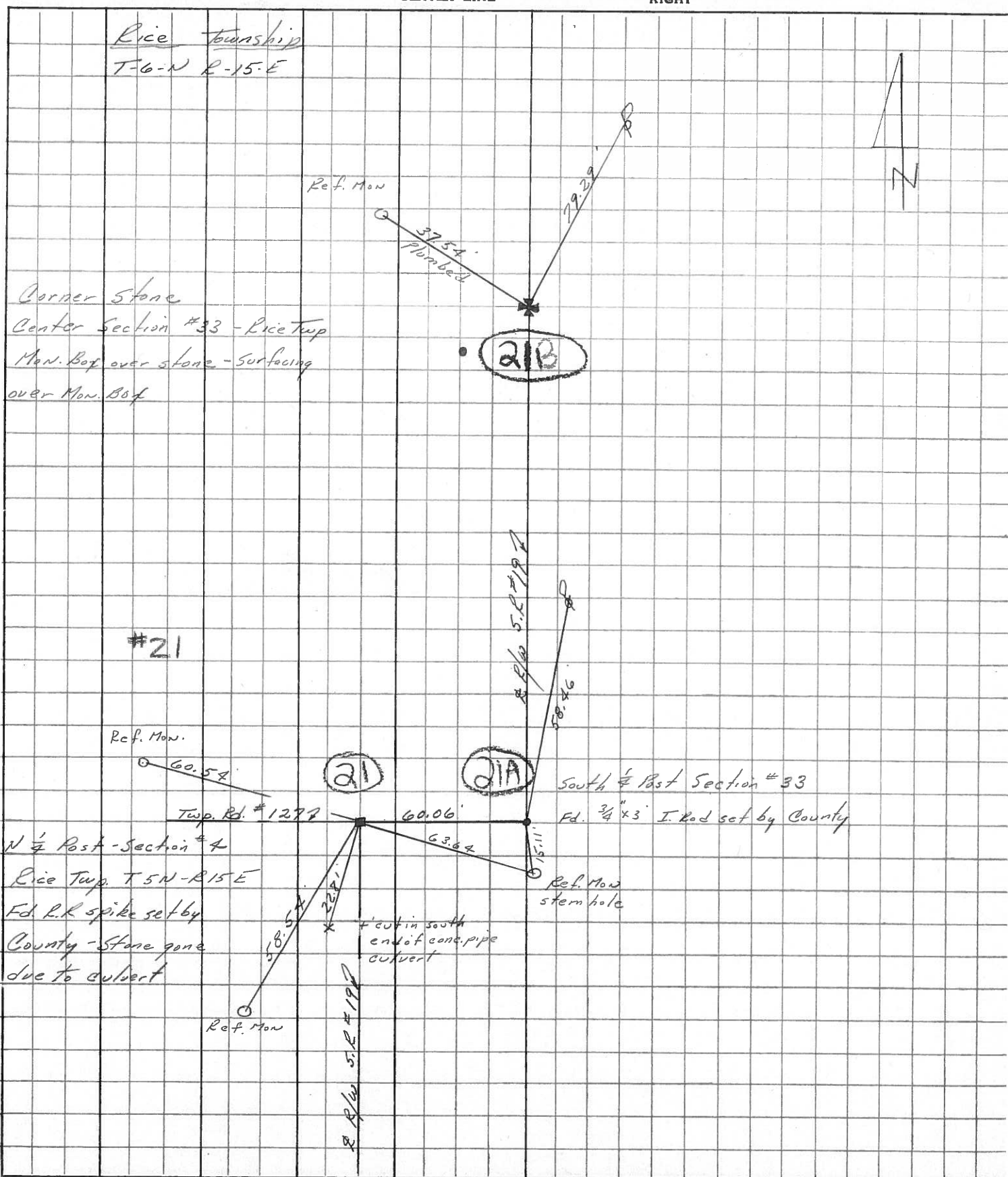
P.K. & WASHER ATOP  
STONE IN MON. BOX  
DIG WHEN NEEDED  
STATIONING PROBABLY  
FROM CIRCA 1970 SURVEY



PERSONNEL	TITLE	PERSONNEL	TITLE
<u>Cromin</u>			
<u>Geyman</u>			
<u>Barbour</u>			

COUNTY Sandusky DATE 7/15/82  
 S. R. #19 WEATHER sunny-humid  
 SEC. Bridge - San. 19-15-32 TEMP. 90°

DESCRIPTION Ties for Control Points JOB NO. \_\_\_\_\_



PERSONNEL TITLE PERSONNEL TITLE

COUNTY Sandusky DATE Dec. 21, 70

S. R. 19 WEATHER

SEC. 3 & 4 32 & 33 TEMP.

DESCRIPTION U.S. # 20 to Ottawa, Po. Line JOB NO.

LEFT CENTER LINE RIGHT

