

O.D.O.T. DISTRICT 2 SURVEY OFFICE (USE ONLY)

PERSONNEL _____

REFERENCE NO. 21 C

SHEET 10 OF 16

NOTES CANTERBURY

DATE 5/7/07

ROUTE SR 19

H.C. HOMAN

WEATHER SUNNY

COUNTY SANDUSKY

R.C. SAPP

TEMP. 60°

TOWNSHIP RICE

DWG BY AUBLE

PID 107060

SECTION 33

T 6 N R 15 E

TYPE MONUMENT P.K./NAIL

ON SURFACE - ~~BELOW~~ ON

OFFSET \odot PAVEMENT 1.3' LT : ~~RT~~

9.8' TO LT EDGE PAVEMENT

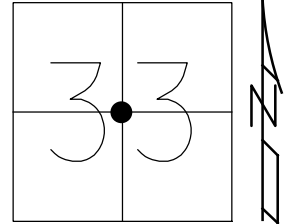
STATION: 818+27.33

HORZ.DATUM: NAD83 (2011)

GEOID: 2012A

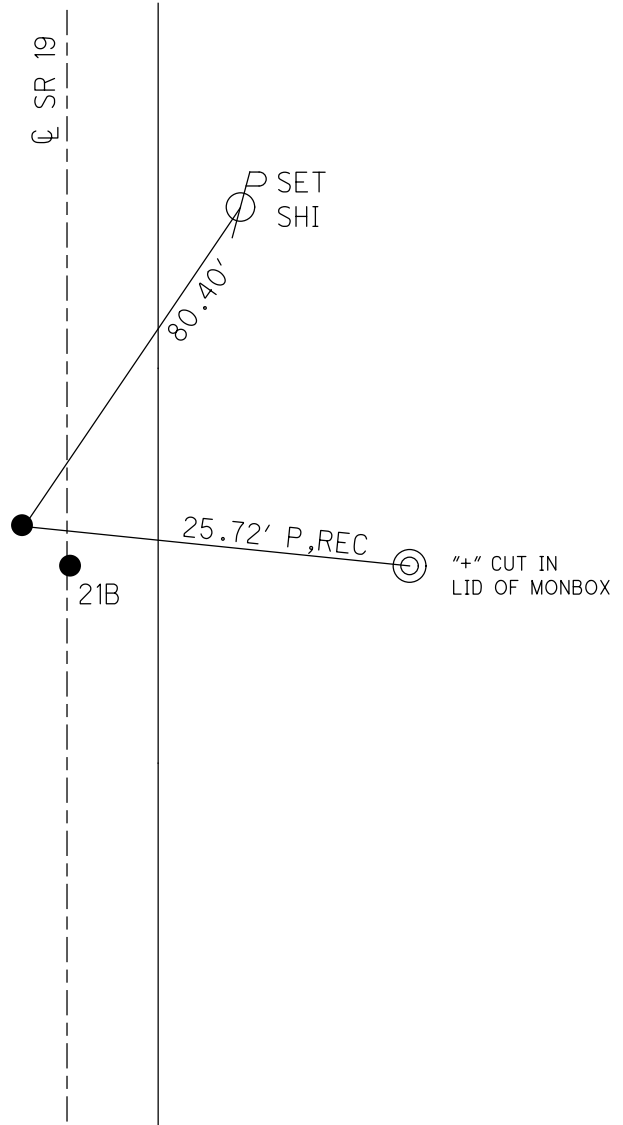
GRID: NORTHING: 645216.251

EASTING: 1794316.648



RECORD:
 FD P.K./WASHER
 7/9/90
 FD P.K./WASHER
 5/7/07, DCH
 SET MAG/WASHER
 11/8/07, DCH
 FD MAG/WASHER
 REFB21
 3/19/19, JFO
 8/22/19, JMR

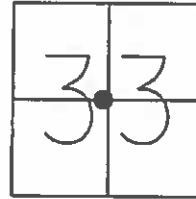
DIST. 21B-21C= 2.46'



O.D.O.T. DISTRICT 2 SURVEY OFFICE (USE ONLY)

PERSONNEL _____ REFERENCE NO. 21C SHEET 7 OF 13
 NOTES CANTERBURY DATE 5/7/07 ROUTE SR 19
 H.C. HOMAN WEATHER SUNNY COUNTY SANDUSKY
 R.C. SAPP TEMP. 60° TOWNSHIP RICE
 SECTION 33
T 6 N R 15 E

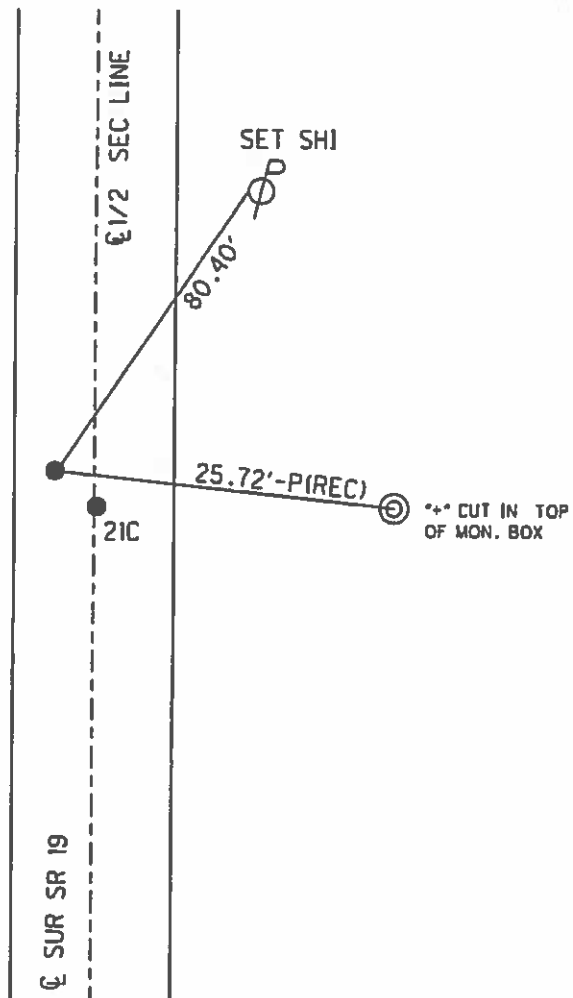
TYPE MONUMENT P.K.NAIL
 ON SURFACE - ~~BELOW~~ ON _____
 LEFT - ~~C~~ PAV'T - RIGHT 1.3'
9.8' TO LT EDGE PAVEMENT
 S.L.M. 818+27.33
 GPS NORTHING: 645216.250 EASTING: 1794316.547



RECORD:
 PK/WASHER ATOP STONE
 IN MON. BOX
 1970

FD P.K./WASHER
 7/9/90

SET MAG/WASHER
 11/8/07, DCH



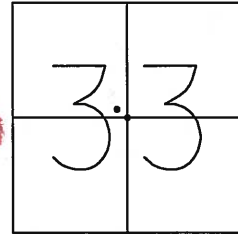
DIST. 21B-21C= 2.46'

O.D.O.T. DISTRICT 2 SURVEY OFFICE (USE ONLY)

PERSONNEL _____	REFERENCE NO. _____	SHEET <u>6</u> OF <u>12</u>
NOTES <u>CANTERBURY</u>	DATE <u>05-07-07</u>	ROUTE <u>SR 19</u>
H.C. <u>HOMAN</u>	WEATHER <u>SUNNY</u>	COUNTY <u>SANDUSKY</u>
R.C. <u>SAPP</u>	TEMP. <u>+60°</u>	TOWNSHIP <u>RICE</u>
_____	_____	SECTION <u>33</u>
_____	_____	T <u>6</u> N R <u>15</u> E

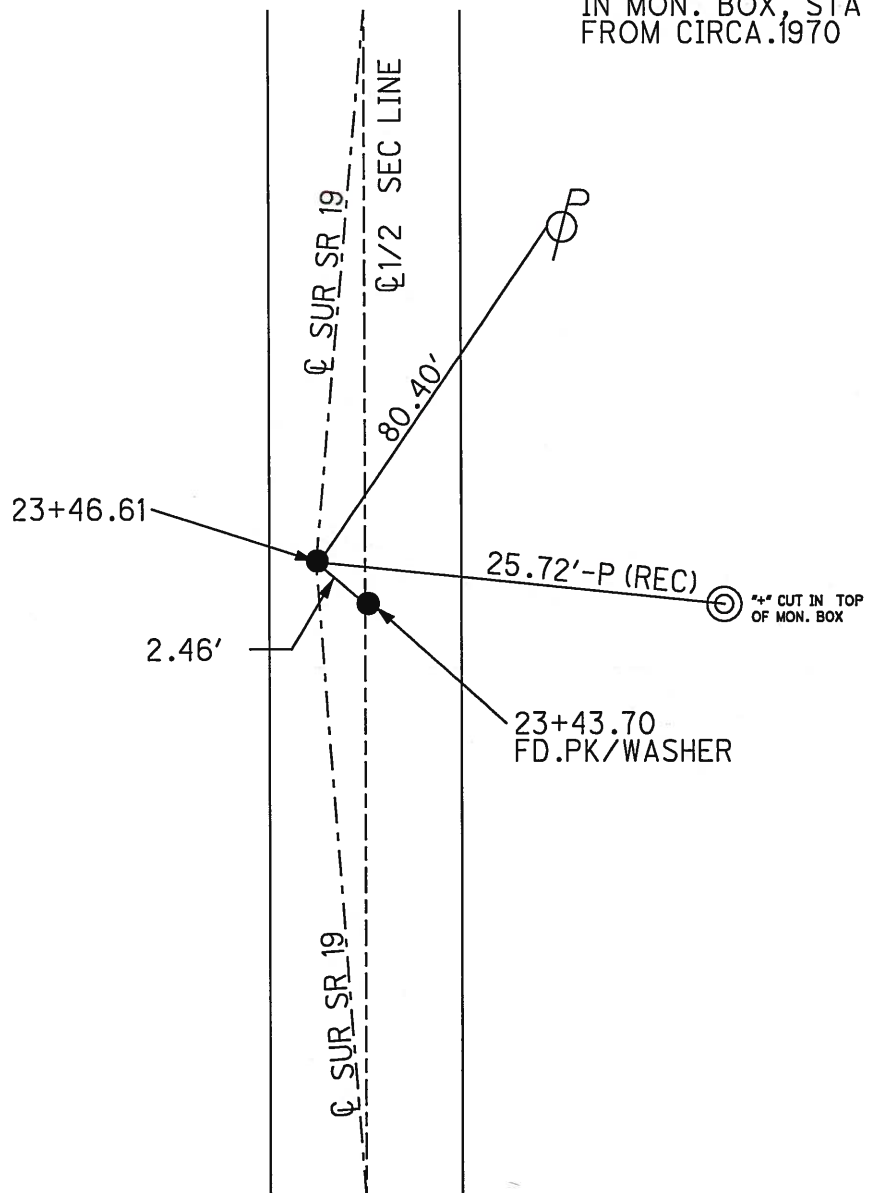
TYPE MONUMENT FD. PK. NAIL
 ON SURFACE - ~~BELOW~~ ON SURFACE
 LEFT - ~~C~~ PAV'T - RIGHT 1.3LT. CL. SR#19
9.8' TO LT. EDGE PAVEMENT
 S.L.M. 23+46.61 (SV9)
 GPS Northing: 645216.25 Easting: 1794316.547

210



PK & WASHER
07-09-90
SET MAG/WASHER
11-08-07 DCH

NOTE: PK/WASHER ATOP STONE
IN MON. BOX, STATIONING
FROM CIRCA.1970



O.D.O.T. DISTRICT 2 SURVEY OFFICE

PERSONNEL _____

REFERENCE NO. _____ SHEET _____ OF _____

NOTES CROWN

H.C. RIPPLE

R.C. BARBOUR

GEYMAN

DATE 7/09/90

WEATHER SUNNY

TEMP. 89°

ROUTE #19

COUNTY SANDUSKY

TOWNSHIP RICE

SECTION 33

T 6 N R 15 E

TYPE MONUMENT P.K.'S & WASHERS

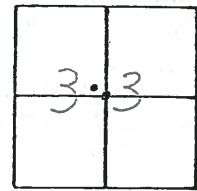
ON SURFACE - BELOW 1" to 2"

LEFT - CL PAV'T. - RIGHT _____

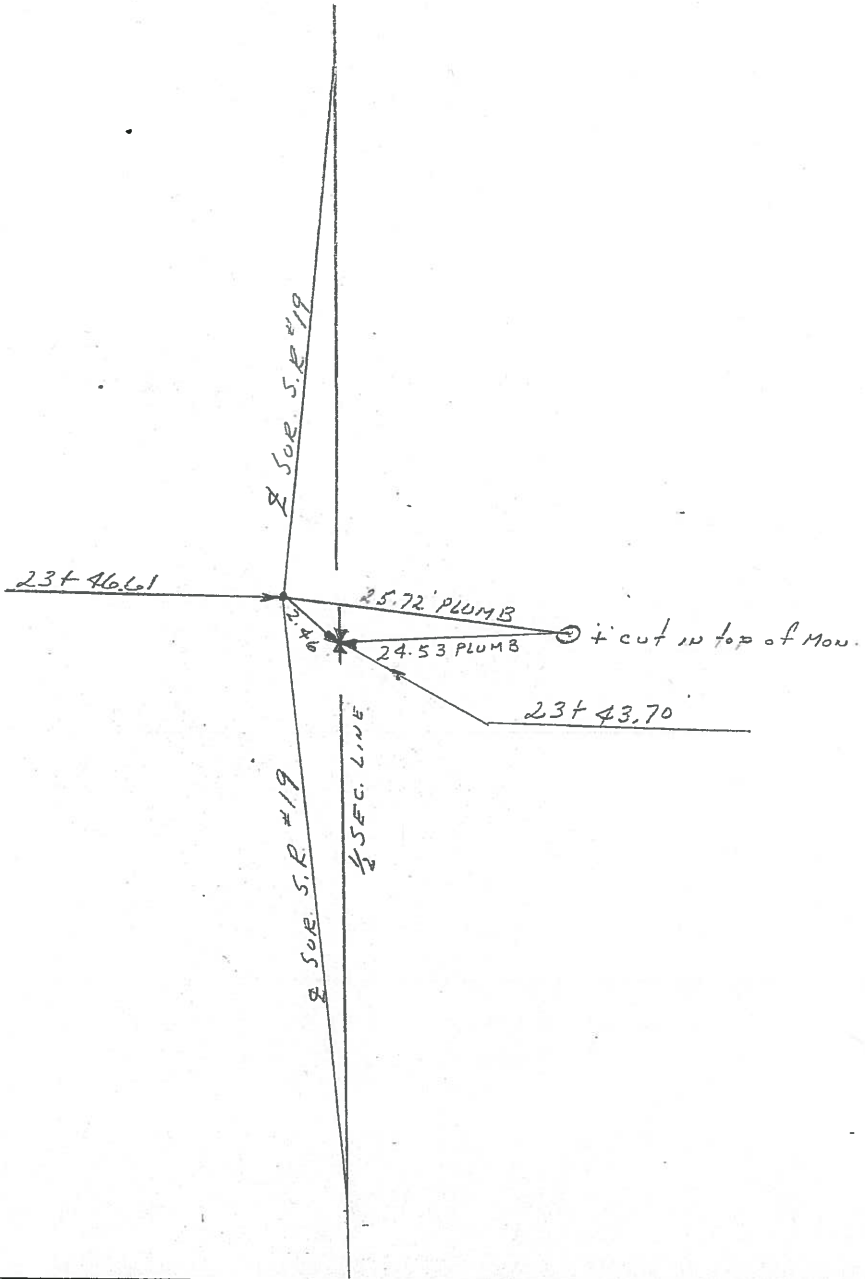
TO _____ EDGE PAVEMENT

S.L.M. _____

21C



P.K. & WASHER ATOP
STONE IN MON. BOX
DIG WHEN NEEDED
STATIONING PROBABLY
FROM CIRCA 1970 SURVEY



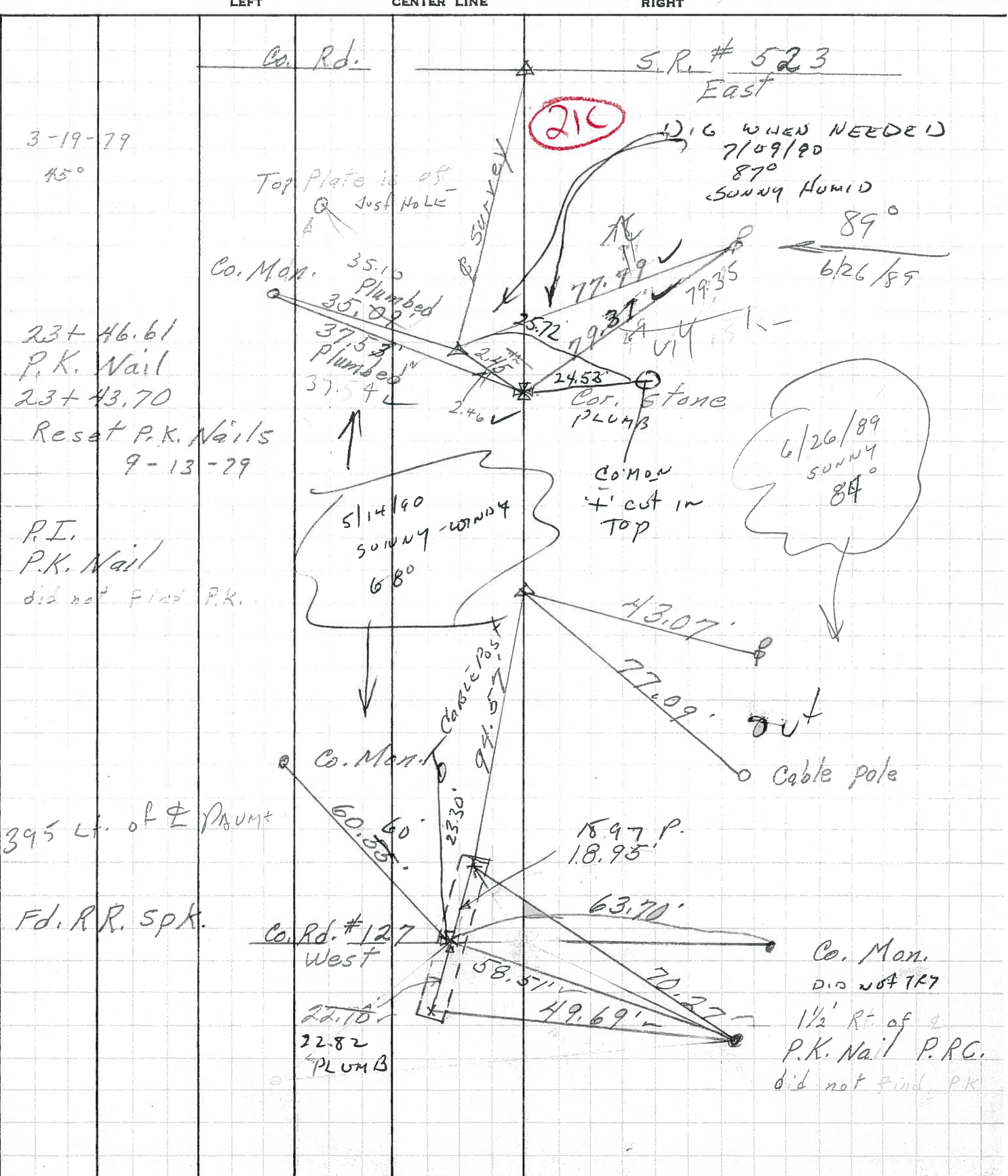
PERSONNEL TITLE PERSONNEL TITLE

COUNTY Sandusky DATE DEC. 24 70

S. R. 19 WEATHER

SEC. 3 & 4 32 & 33 TEMP.

DESCRIPTION U.S. # 20 to Ottawa, Po. Line JOB NO.



3-19-79
45°

23+ 46.61
P.K. Nail
23+ 43.70
Reset P.K. Nails
9-13-79

P.I.
P.K. Nail
did not find P.K.

395 Lf. of Φ PLUMB

Fd. RR. Spk.

Co. Rd.

S.R. # 523
East

210

DIG WHEN NEEDED
7/09/80
87°
SUNNY HUMID

89°
6/26/89

6/26/89
SUNNY
84°

Top Plate is off
just hole

Co. Man. 35.10
Plumbed
35.02
37.53
Plumbed
37.54

77.99
19.35
25.72
19.31
2.46
2.45
2.46
24.53
Co. Stone
PLUMB

5/14/80
SUNNY-WINDY
68°

Co. Man.
+ cut in
TOP

Co. Man.
60.60
23.30
94.57

Cable Post
94.57

43.07
77.09 out
Cable pole

18.97 P.
1.8.95

Co. Rd. # 127
West

22.10
22.82
PLUMB

58.57
49.69
70.22

Co. Man.
did not find
1 1/2' Rt of Φ
P.K. Nail P.R.C.
did not find P.K.