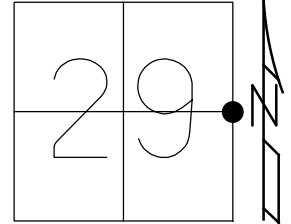


O.D.O.T. DISTRICT 2 SURVEY OFFICE (USE ONLY)

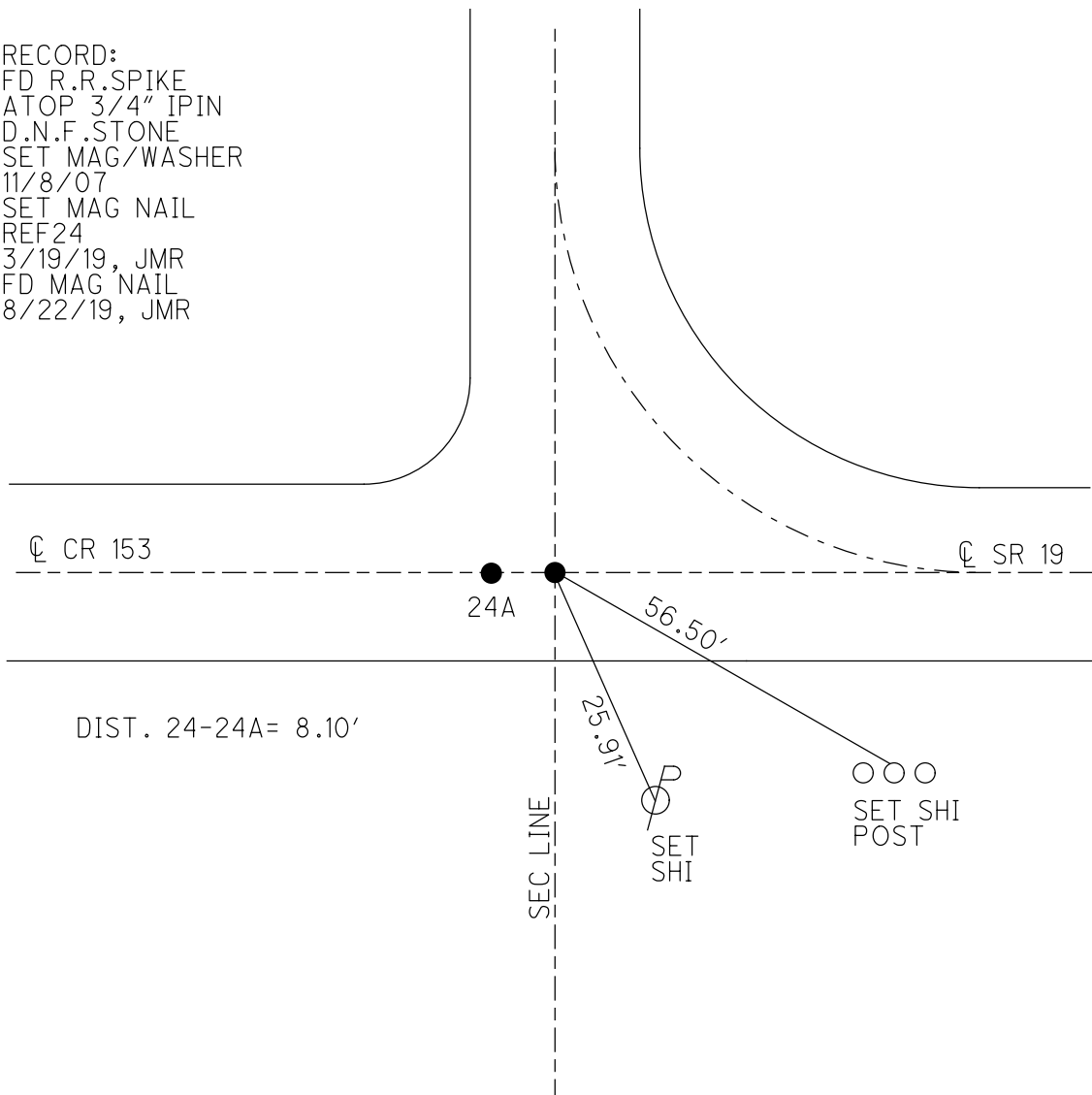
PERSONNEL \_\_\_\_\_ REFERENCE NO. 24 SHEET 13 OF 16  
 NOTES CANTERBURY DATE 5/7/07 ROUTE SR 19  
 H.C. HOMAN WEATHER SUNNY COUNTY SANDUSKY  
 R.C. SAPP TEMP. 60° TOWNSHIP RICE  
 DWG BY AUBLE PID 107060 SECTION 29  
 T 6 N R 15 E

TYPE MONUMENT R.R. SPIKE  
~~ON SURFACE~~ - BELOW 3"  
 OFFSET  $\odot$  PAVEMENT 44.8' LT : ~~RT~~  
33.9' TO LT EDGE PAVEMENT  
 STATION: 897+60



HORZ. DATUM: NAD83 (2011) GEOID: 2012A  
 GRID: NORTHING: 650548.924 EASTING: 1791717.277

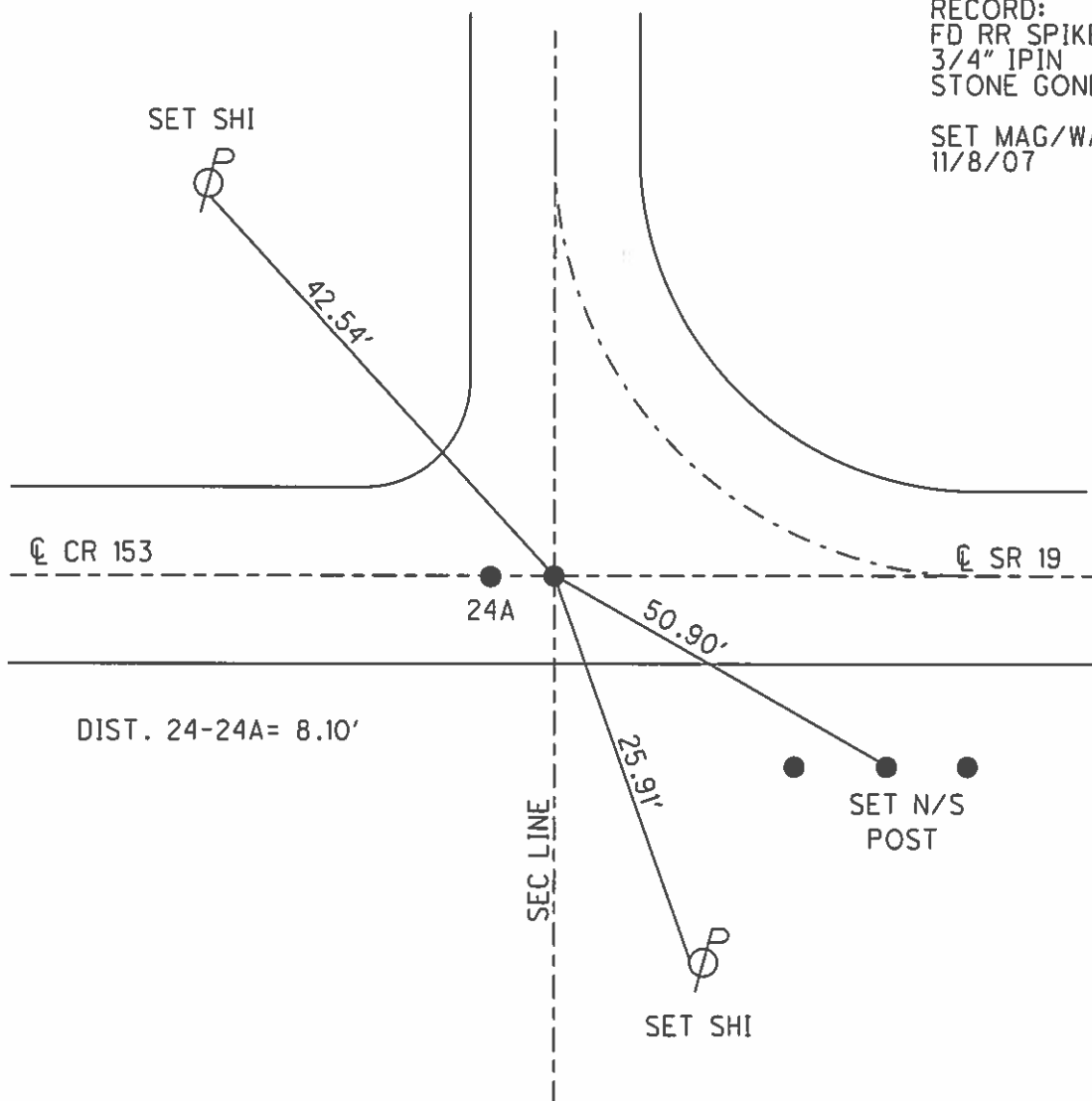
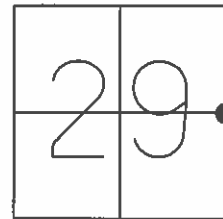
RECORD:  
 FD R.R. SPIKE  
 ATOP 3/4" IPIN  
 D.N.F. STONE  
 SET MAG/WASHER  
 11/8/07  
 SET MAG NAIL  
 REF24  
 3/19/19, JMR  
 FD MAG NAIL  
 8/22/19, JMR



O.D.O.T. DISTRICT 2 SURVEY OFFICE (USE ONLY)

PERSONNEL	REFERENCE NO.	24	SHEET	10	OF	13
NOTES	CANTERBURY	DATE	5/7/07	ROUTE	SR 19	
H.C.	HOMAN	WEATHER	SUNNY	COUNTY	SANDUSKY	
R.C.	SAPP	TEMP.	60°	TOWNSHIP	RICE	
				SECTION	29	
				T	6	N
				R	15	E

TYPE MONUMENT R.R.SPIKE  
~~ON SURFACE~~ - BELOW 3"  
~~LEFT~~ - CL PAV'T - ~~RIGHT~~ ON CL WEST  
33.9' TO T EDGE PAVEMENT  
 S.L.M. 897+60  
 GPS NORTHING: 650548.992 EASTING: 1791717.222

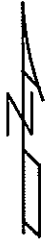
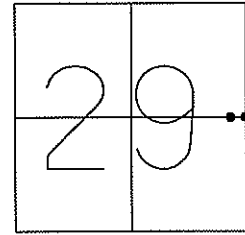


RECORD:  
 FD RR SPIKE ATOP  
 3/4" IPIN  
 STONE GONE  
 SET MAG/WASHER  
 11/8/07

O.D.O.T. DISTRICT 2 SURVEY OFFICE (USE ONLY)

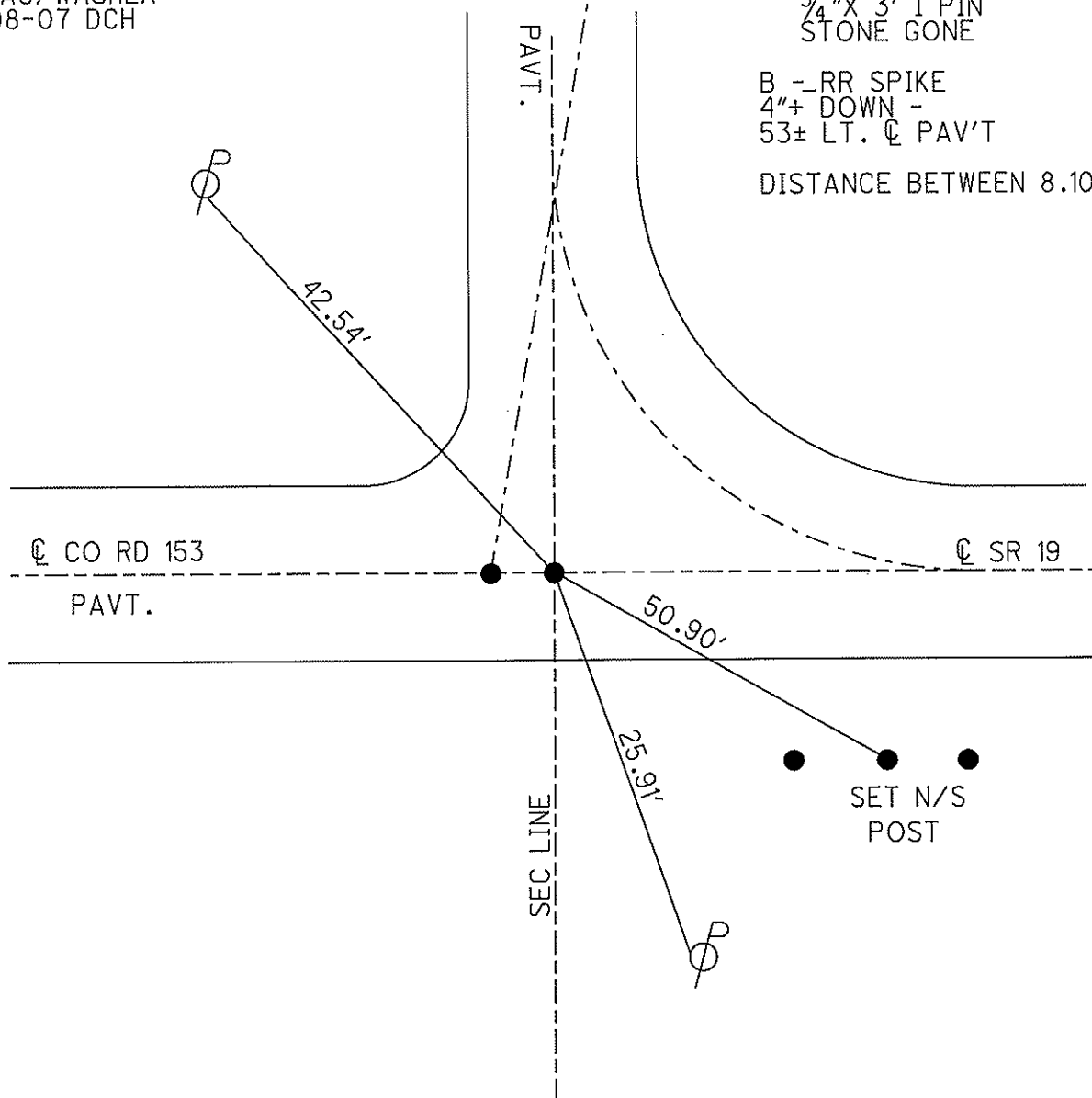
PERSONNEL _____	REFERENCE NO. <u>24</u>	SHEET <u>9</u> OF <u>12</u>
NOTES <u>CANTERBURY</u>	DATE <u>05-07-07</u>	ROUTE <u>SR 19</u>
H.C. <u>HOMAN</u>	WEATHER <u>SUNNY</u>	COUNTY <u>SANDUSKY</u>
R.C. <u>SAPP</u>	TEMP. <u>+60°</u>	TOWNSHIP <u>RICE</u>
_____	_____	SECTION <u>29</u>
_____	_____	T <u>6</u> N R <u>15</u> E

TYPE MONUMENT R.R. SPIKE  
~~ON SURFACE~~ - BELOW 3" DOWN  
~~LEFT - C PAV'T - RIGHT~~ ON CL N&E  
33.9' TOLT. EDGE PAVEMENT  
 S.L.M. (SV12)  
 GPS Northing: 650548.992 Easting: 1791717.222



SET MAG/WASHER  
11-08-07 DCH

A - RR SPIKE ATOP  
 $\frac{3}{4}$ " X 3' I PIN  
 STONE GONE  
 B - RR SPIKE  
 4"+ DOWN -  
 53± LT. C PAV'T  
 DISTANCE BETWEEN 8.10



# O.D.O.T. DISTRICT 2 SURVEY OFFICE

PERSONNEL \_\_\_\_\_

REFERENCE NO. 24

SHEET \_\_\_\_\_ OF \_\_\_\_\_

NOTES CROWN

H.C. RIPPLE

R.C. GEYMAN

DATE 7/23/90

WEATHER SUNNY

TEMP. 80°

ROUTE #19

COUNTY SANDUSKY

TOWNSHIP RICE

SECTION 29

T 6 N R 15 E

TYPE MONUMENT RR SPIKE

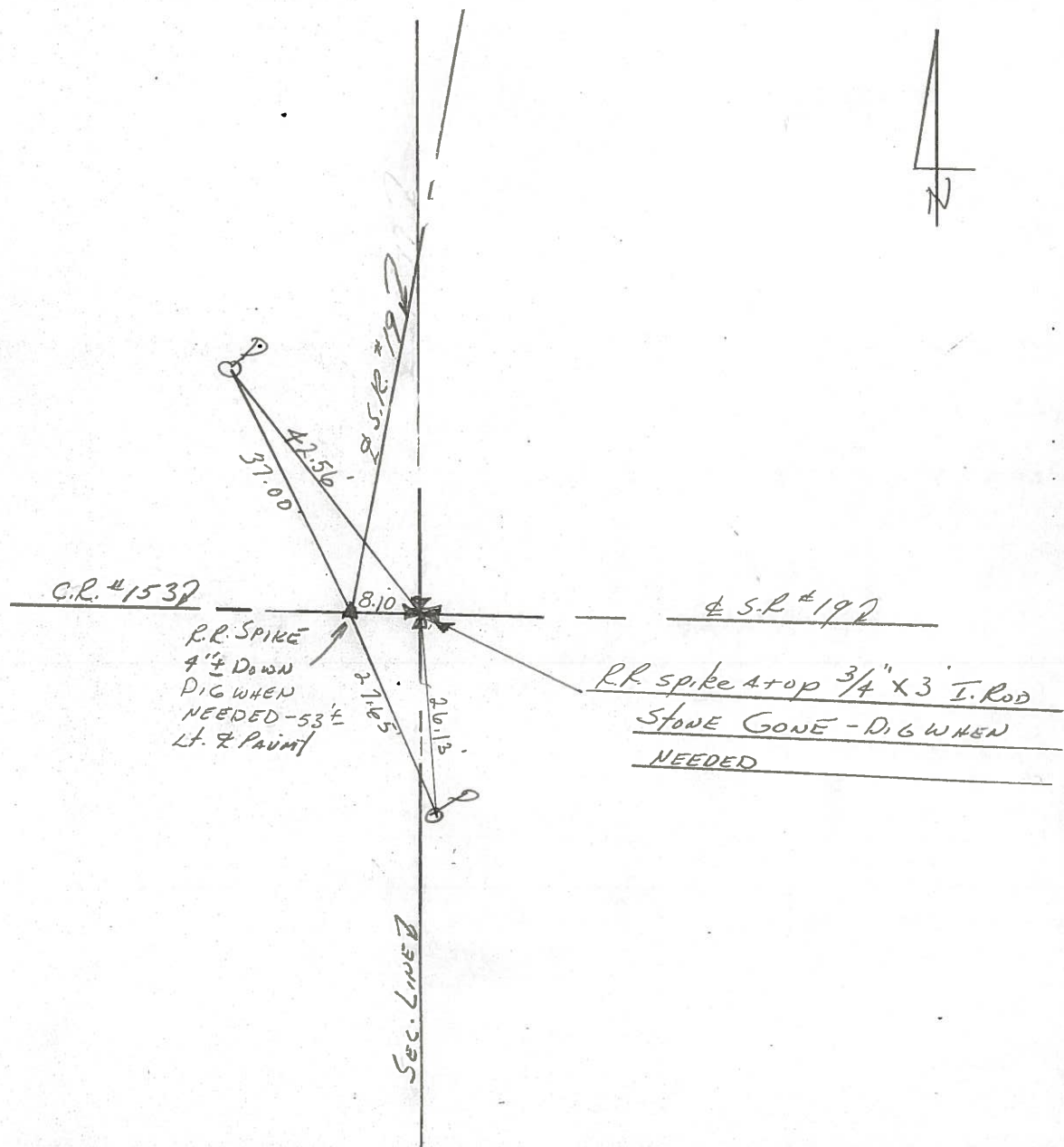
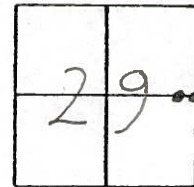
ON SURFACE - BELOW 4" ±

LEFT - & PAINT - RIGHT 47.5' Lt.

TO \_\_\_\_\_ EDGE PAVEMENT

S.L.M. \_\_\_\_\_

24



# O.D.O.T. DISTRICT 2 SURVEY OFFICE

PERSONNEL

REFERENCE NO. 24

SHEET      OF     

NOTES LOHRKE

H.C. SOCKMAN

R.C. HOFFMAN

DATE 10-22-87

WEATHER CLOUDY / WINDY

TEMP. +40

ROUTE S.R. 19

COUNTY SANDUSKY

TOWNSHIP RICE

SECTION 28

T 6 N R 15 E

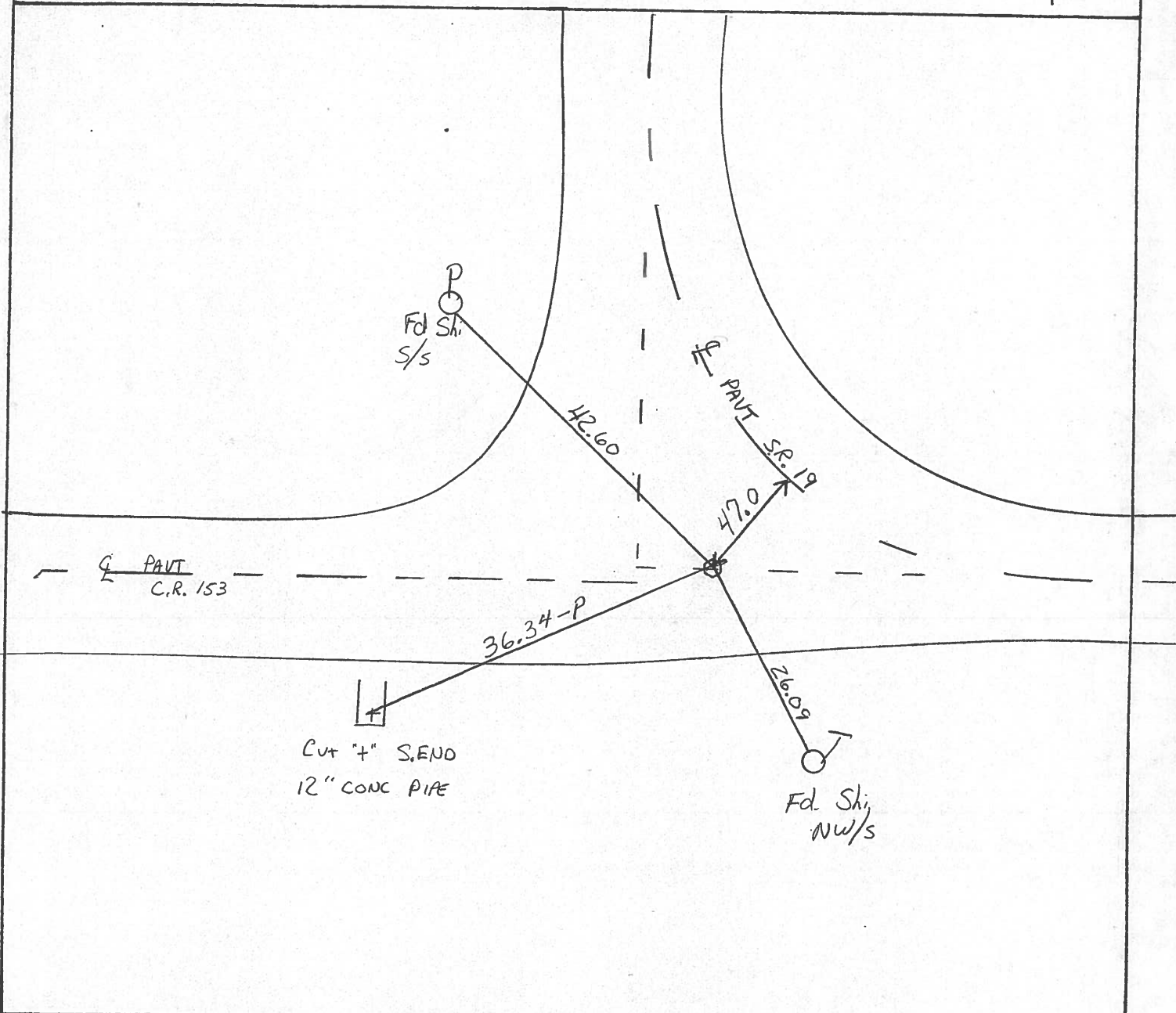
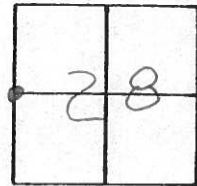
TYPE MONUMENT Lg R.R. Spike

ON SURFACE - BELOW 1 1/2" BELOW

LEFT - C PAV'T. - RIGHT 47.0 & PAV'T. SR 19

14.5 TO SOUTH EDGE PAVEMENT

S.L.M.     



# O.D.O.T. DISTRICT 2 SURVEY OFFICE

PERSONNEL \_\_\_\_\_

REFERENCE NO. 24

SHEET 3 OF \_\_\_\_\_

NOTES 1. Stone

H.C. J. Hausholdev

R.C. R. Michelak

DATE 20 Nov. 85

WEATHER Cool

TEMP. 40°

ROUTE SR # 19

COUNTY Sandusky

TOWNSHIP Rico

SECTION 28

T \_\_\_\_\_ R \_\_\_\_\_

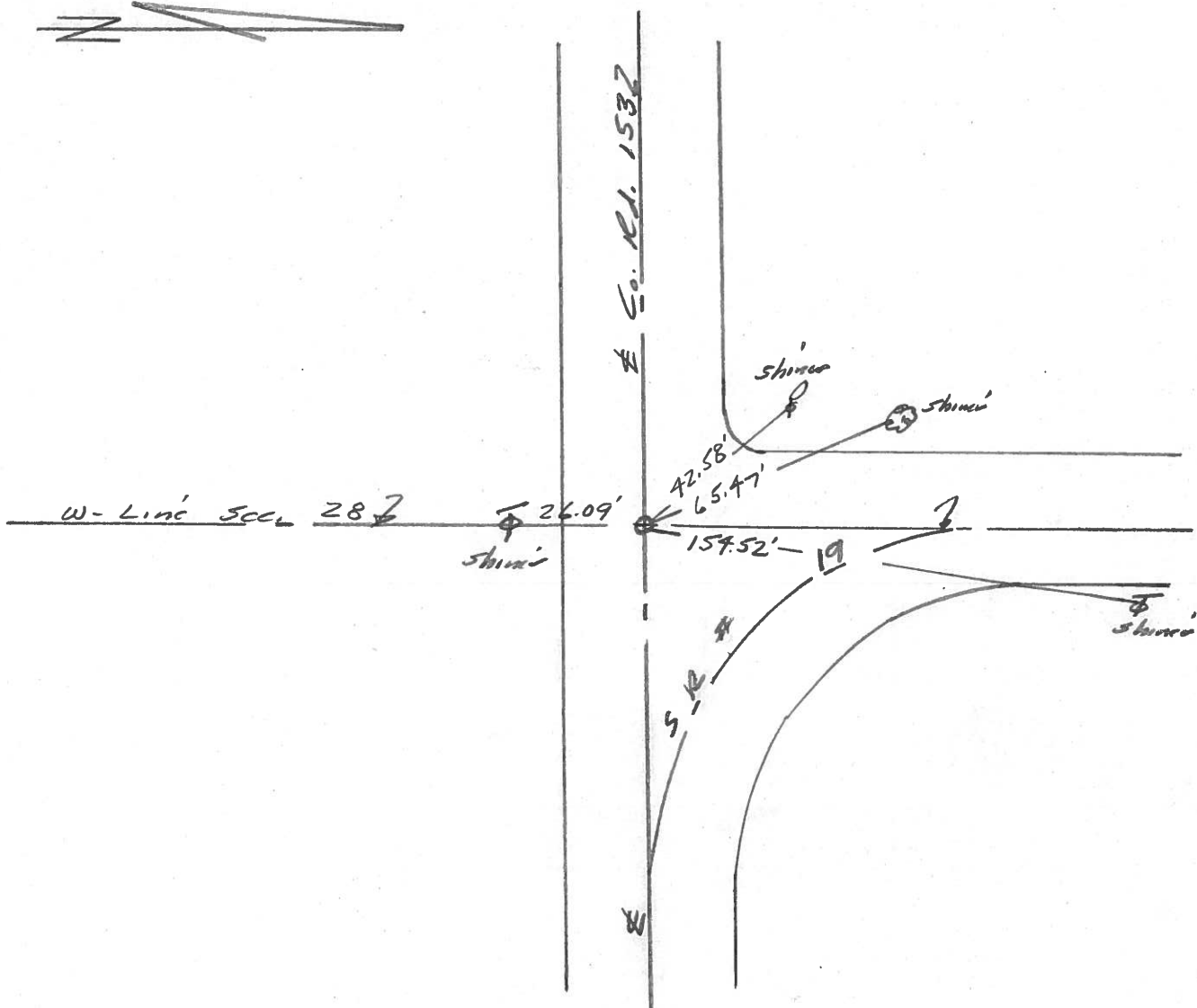
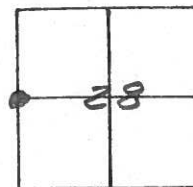
TYPE MONUMENT RR Spk

ON SURFACE - BELOW 2" deep

LEFT -  $\odot$  PAV'T. - RIGHT \_\_\_\_\_

TO \_\_\_\_\_ EDGE PAVEMENT

S.L.M. \_\_\_\_\_



PERSONNEL TITLE PERSONNEL TITLE

Schneider \_\_\_\_\_ Potts \_\_\_\_\_

COUNTY Sandusky DATE Feb. 1968

Mosser \_\_\_\_\_

S. R. # 19 WEATHER \_\_\_\_\_

Barbour \_\_\_\_\_

SEC. North of Fremont TEMP. \_\_\_\_\_

Redding \_\_\_\_\_

DESCRIPTION Ties for Control P M JOB NO. \_\_\_\_\_

LEFT CENTER LINE RIGHT

