

O.D.O.T. DISTRICT 2 SURVEY OFFICE (USE ONLY)

PERSONNEL

REFERENCE NO. 24 A

SHEET 14 OF 16

NOTES CANTERBURY

DATE 5/7/07

ROUTE SR 19

H.C. HOMAN

WEATHER SUNNY

COUNTY SANDUSKY

R.C. SAPP

TEMP. 60°

TOWNSHIP RICE

SECTION 29

DWG BY AUBLE

PID 107060

T 6 N R 15 E

TYPE MONUMENT R.R. SPIKE

~~ON SURFACE~~ - BELOW 4"

OFFSET \varnothing PAVEMENT 53' LT : ~~RT~~

- TO - EDGE PAVEMENT

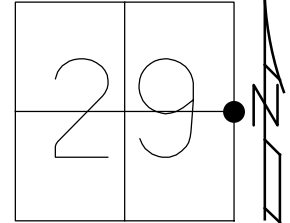
STATION: 897+68

HORZ. DATUM: NAD83 (2011)

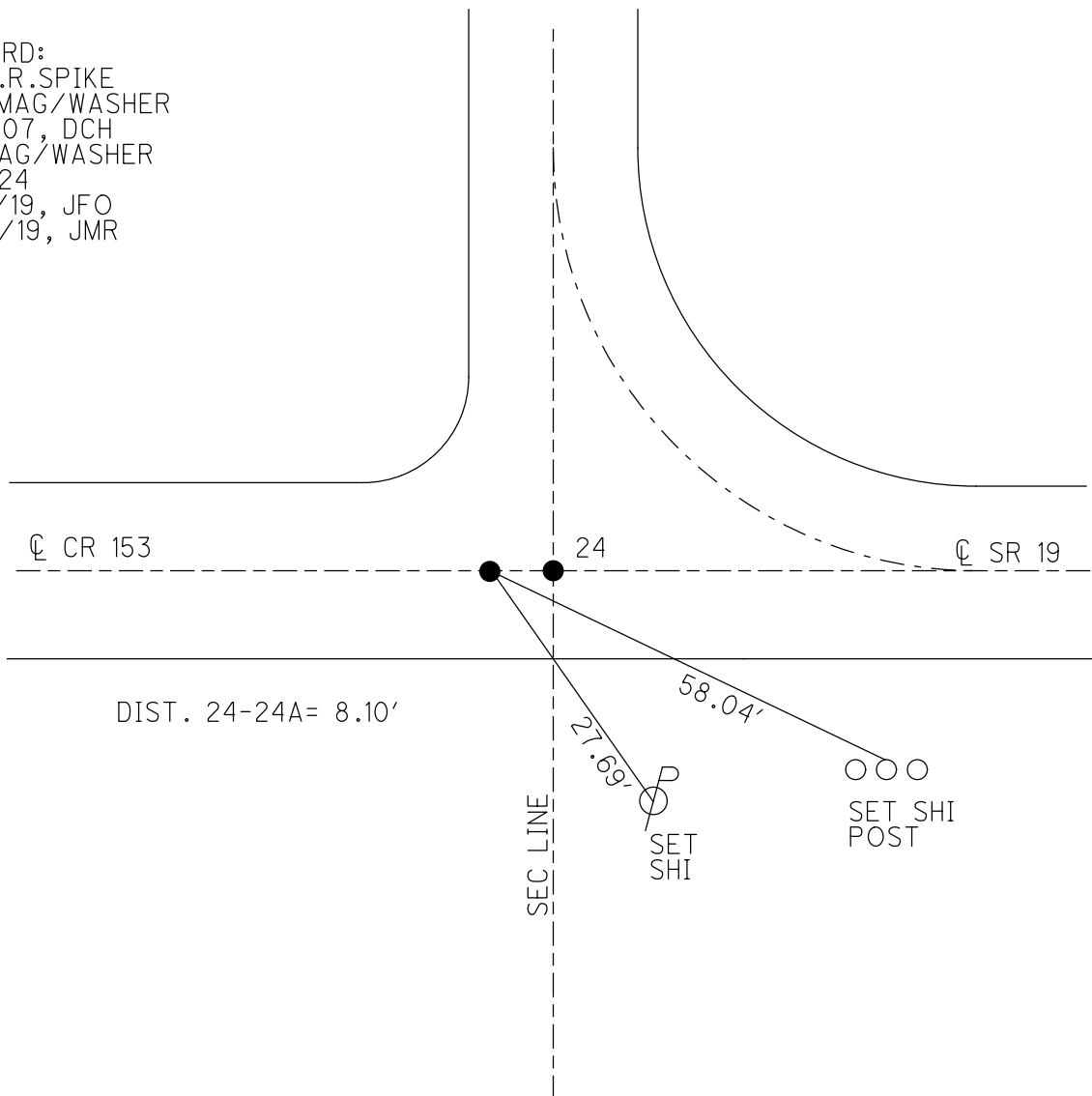
GEOID: 2012A

GRID: NORTHING: 650548.969

EASTING: 1791709.192



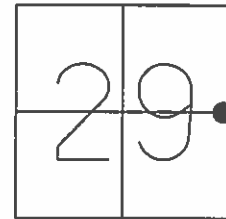
RECORD:
 FD R.R. SPIKE
 SET MAG/WASHER
 11/8/07, DCH
 FD MAG/WASHER
 REFA24
 3/19/19, JFO
 8/22/19, JMR



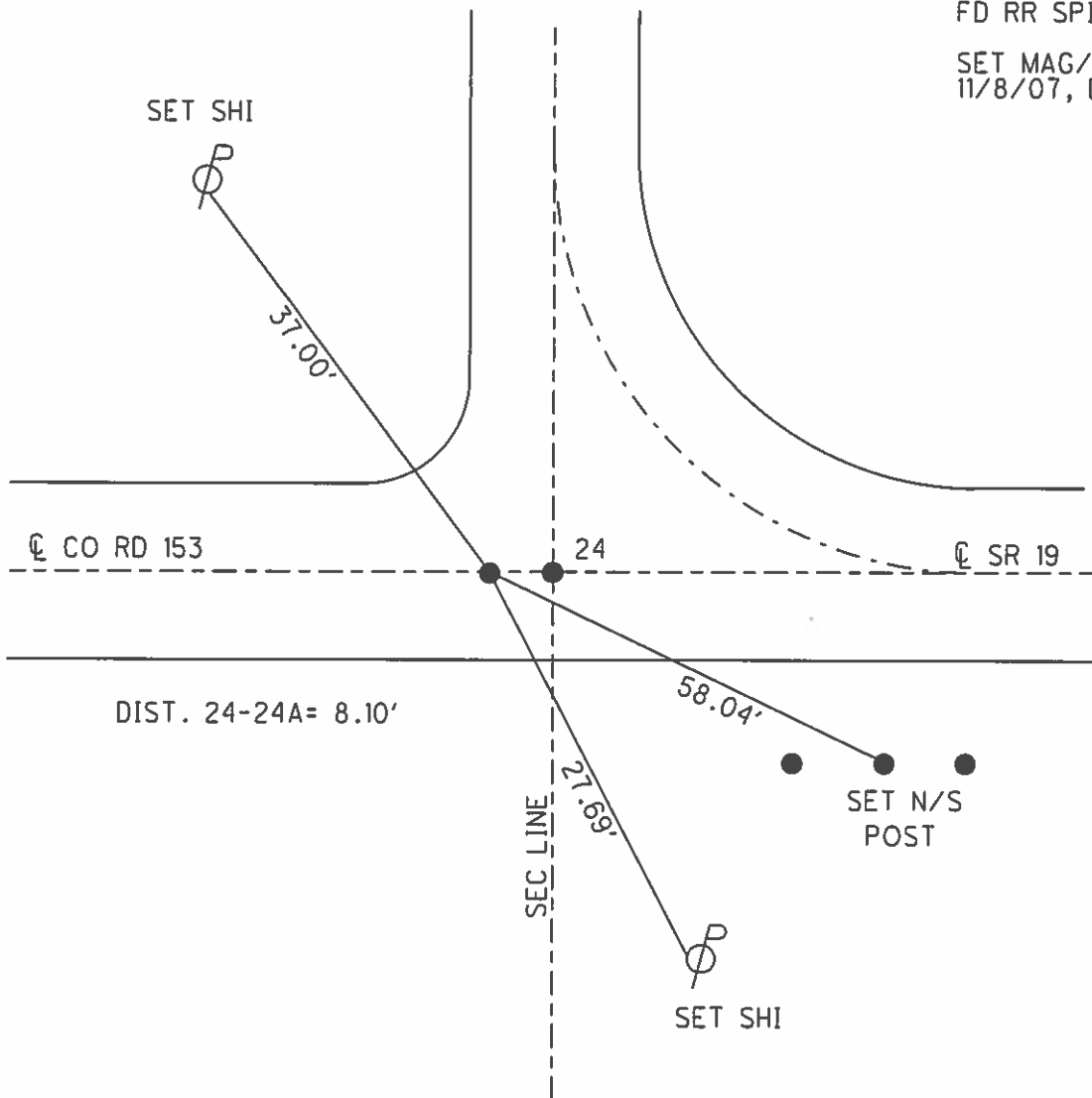
O.D.O.T. DISTRICT 2 SURVEY OFFICE (USE ONLY)

PERSONNEL	REFERENCE NO.	24 A	SHEET	11	OF	13
NOTES	CANTERBURY	DATE	5/7/07	ROUTE	SR 19	
H.C.	HOMAN	WEATHER	SUNNY	COUNTY	SANDUSKY	
R.C.	SAPP	TEMP.	60°	TOWNSHIP	RICE	
				SECTION	29	
				T	6	N
				R	15	E

TYPE MONUMENT R.R.SPIKE
~~ON SURFACE~~ - BELOW 4"
 LEFT - ~~☐ PAV'T~~ - RIGHT 53'
 - TO - EDGE PAVEMENT
 S.L.M. 897+68
 GPS NORTHING: 650549.056 EASTING: 1791709.149



RECORD:
 FD RR SPIKE
 SET MAG/WASHER
 11/8/07, DCH



O.D.O.T. DISTRICT 2 SURVEY OFFICE (USE ONLY)

PERSONNEL _____

REFERENCE NO. 24A

SHEET 10 OF 12

NOTES CANTERBURY

DATE 05-07-07

ROUTE SR 19

H.C. HOMAN

WEATHER SUNNY

COUNTY SANDUSKY

R.C. SAPP

TEMP. +60°

TOWNSHIP RICE

SECTION 29

T 6 N R 15 E

TYPE MONUMENT R.R. SPIKE

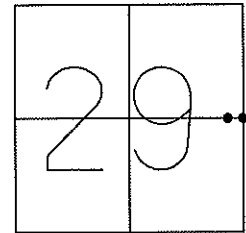
~~ON SURFACE~~ - BELOW 4" DOWN

LEFT - ~~C PAV'T~~ = RIGHT 53' LT. CL SR#19

TO EDGE PAVEMENT

S.L.M. (SV13)

GPS Northing: 650549.056 Easting: 1791709.149

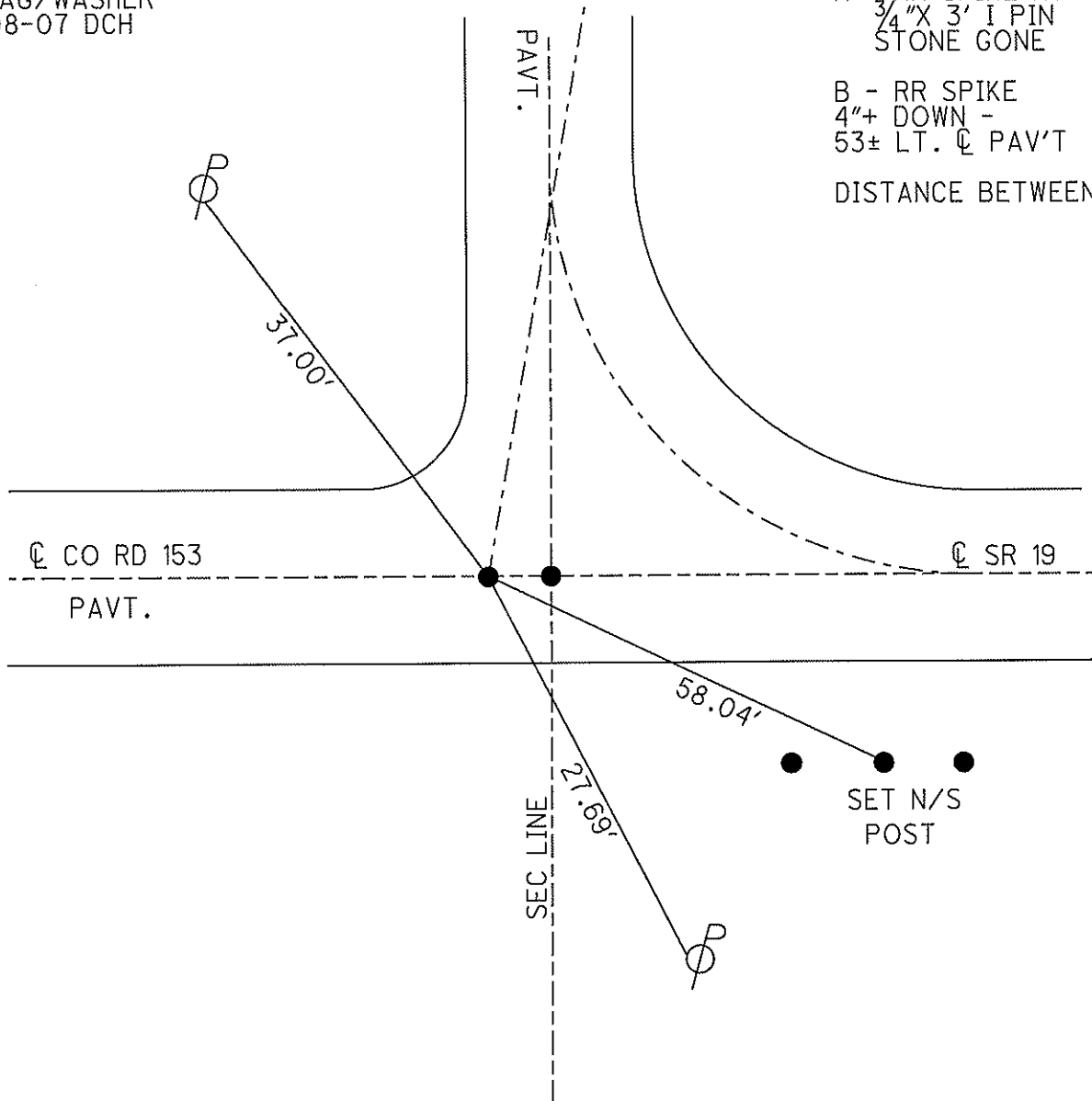


SET MAG/WASHER
11-08-07 DCH

A - RR SPIKE ATOP
3/4" X 3' I PIN
STONE GONE

B - RR SPIKE
4"+ DOWN -
53± LT. C PAV'T

DISTANCE BETWEEN 8.10



O.D.O.T. DISTRICT 2 SURVEY OFFICE

PERSONNEL _____

REFERENCE NO. 24

SHEET _____ OF _____

NOTES CROWN

H.C. RIPPLE

R.C. GEYMAN

DATE 7/23/90

WEATHER SUNNY

TEMP. 80°

ROUTE #19

COUNTY SANDUSKY

TOWNSHIP RICE

SECTION 29

T. 6 N R. 15 E

TYPE MONUMENT RR SPIKE

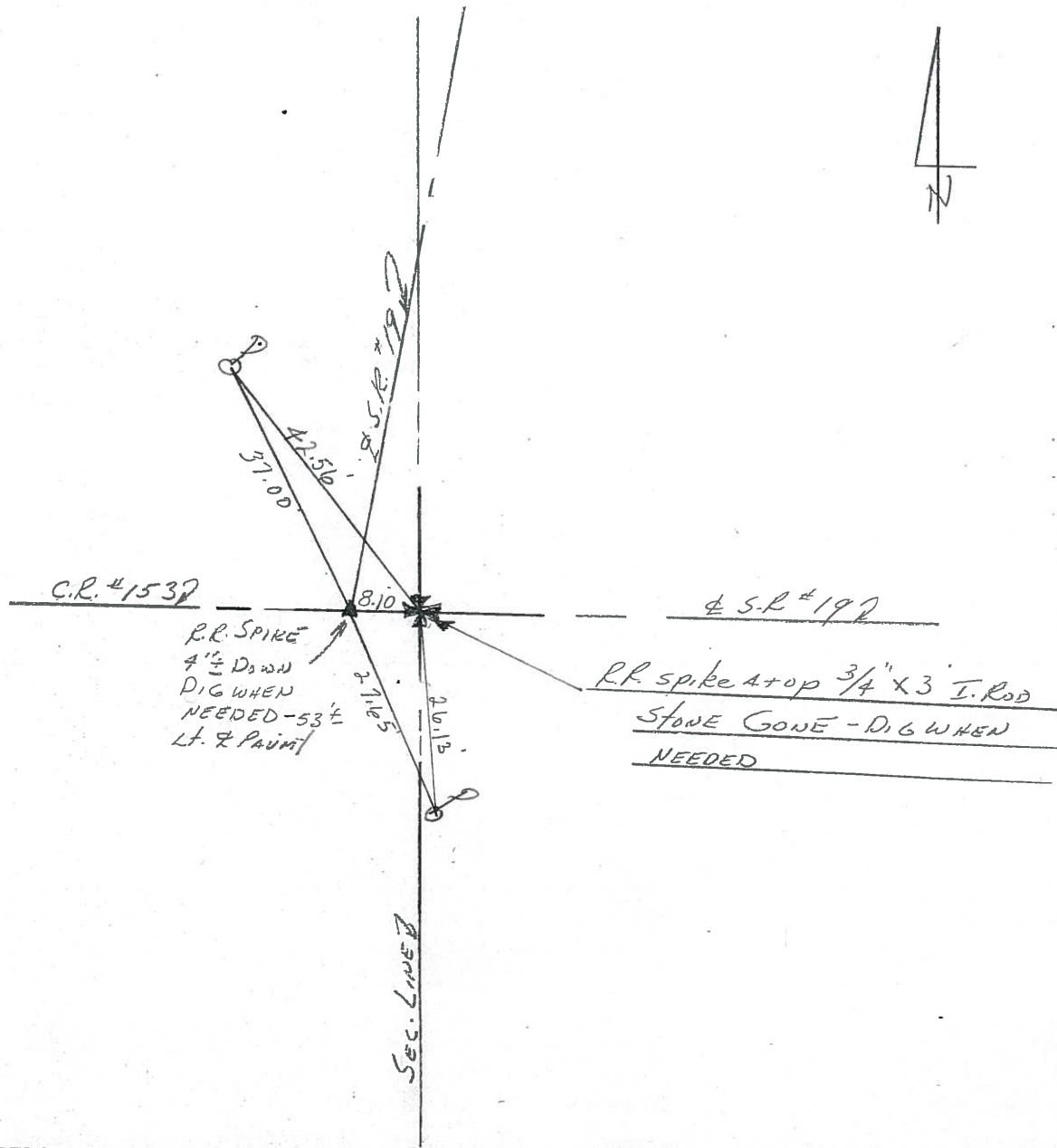
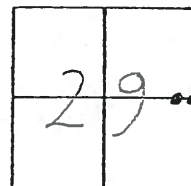
ON SURFACE - BELOW 4" ±

LEFT - & PAV'T. - RIGHT 47.5' LT.

TO _____ EDGE PAVEMENT

S.L.M. _____

24A



PERSONNEL	TITLE	PERSONNEL	TITLE	COUNTY	DATE
Schneider		Potts		Sandusky	Feb. 1968
Mosser				S. R. # 19	WEATHER
Barbour				SEC. North of Fremont	TEMP.
Redding					

DESCRIPTION Ties for Control Points JOB NO. _____

