

O.D.O.T. DISTRICT 2 SURVEY OFFICE (USE ONLY)

PERSONNEL _____ REFERENCE NO. 26 SHEET 16 OF 16

NOTES CANTERBURY DATE 5/7/07 ROUTE SR 19
 H.C. HOMAN WEATHER SUNNY COUNTY SANDUSKY
 R.C. SAPP TEMP. 60° TOWNSHIP RICE

DWG BY AUBLE PID 107060 SECTION 29
 T 6 N R 15 E

TYPE MONUMENT R.R. SPIKE

~~ON SURFACE~~ - BELOW 3"

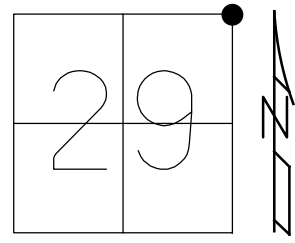
OFFSET 6" \odot PAVEMENT LT : ~~RT~~

4.8' TO LT EDGE PAVEMENT

STATION: 922+94.4

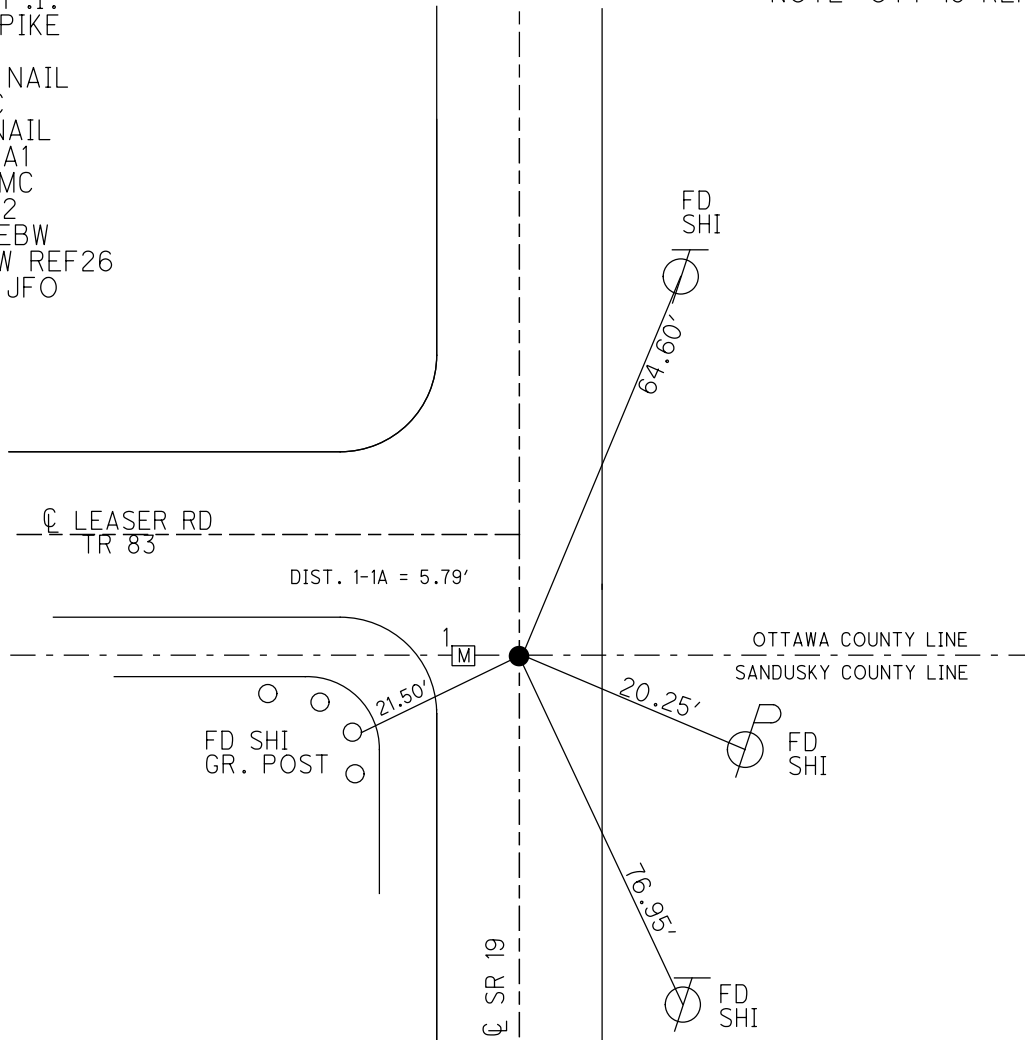
HORZ.DATUM: NAD83 (2011) GEOID: 2012A

GRID: NORTHING: 653186.605 EASTING: 1791749.703



RECORD: P.I.
 FD R.R.SPIKE
 5/7/07
 SET MAG NAIL
 2008, MC
 FD MAG NAIL
 GPS, REFA1
 1/15/13, MC
 GPS, REF2
 6/5/14, EBW
 FD MAG/W REF26
 3/19/19, JFO

NOTE: OTT 19 REF 1A



O.D.O.T. DISTRICT 2 SURVEY OFFICE (USE ONLY)

PERSONNEL _____ REFERENCE NO. 26 SHEET 13 OF 13
 NOTES CANTERBURY DATE 5/7/07 ROUTE SR 19
 H.C. HOMAN WEATHER SUNNY COUNTY SANDUSKY
 R.C. SAPP TEMP. 60° TOWNSHIP RICE
 _____ SECTION 29
 _____ T 6 N R 15 E

TYPE MONUMENT R.R.SPIKE
~~ON SURFACE - BELOW~~ 3"
 LEFT - ~~PAVT~~ - RIGHT 6"
4.8' TO LT EDGE PAVEMENT
 S.L.M. 922+94.4
 GPS NORTHING: 653186.610 EASTING: 1791749.650

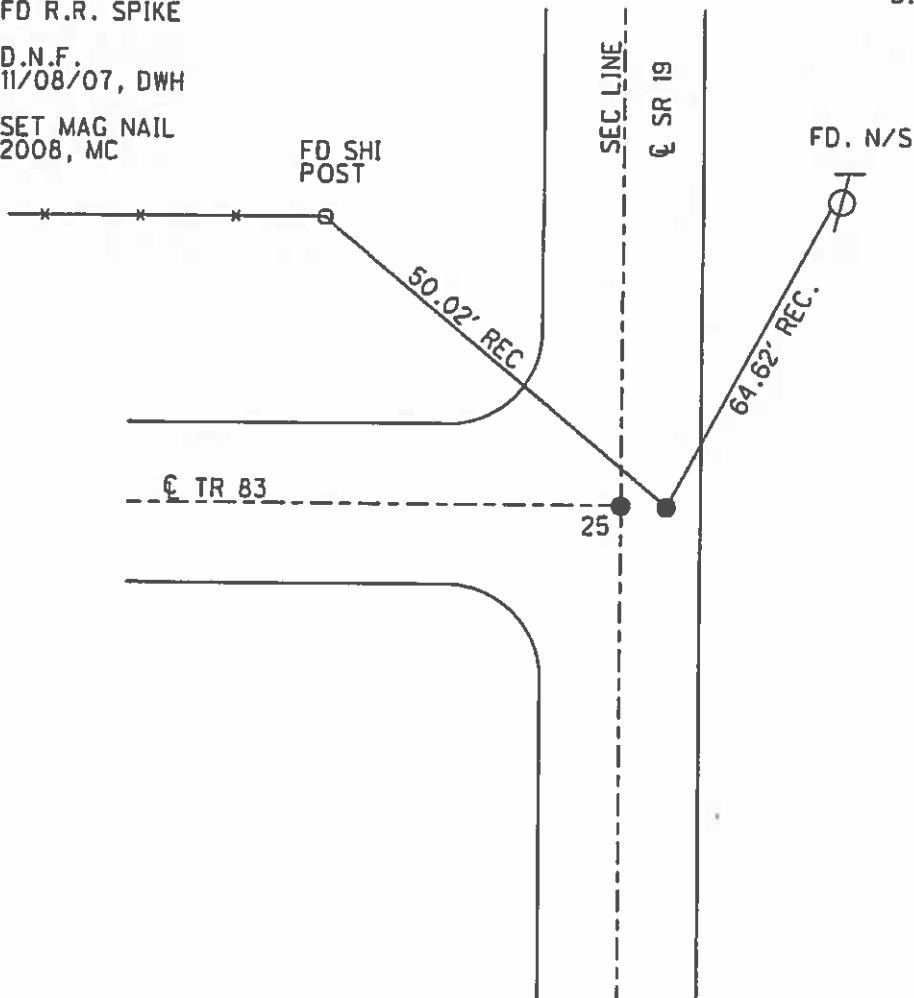


RECORD: P.I.
 FD R.R. SPIKE

DIST. 25-26= 10.4'

D.N.F.
 11/08/07, DWH

SET MAG NAIL
 2008, MC

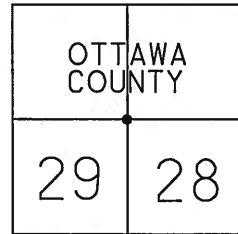


O.D.O.T. DISTRICT 2 SURVEY OFFICE (USE ONLY)

PERSONNEL _____ REFERENCE NO. _____ SHEET 12 OF 12
 NOTES CANTERBURY DATE 05-07-07 ROUTE SR 19
 H.C. HOMAN WEATHER SUNNY COUNTY SANDUSKY
 R.C. SAPP TEMP. +60° TOWNSHIP RICE
 _____ SECTION 29
 _____ T 6 N R 15 E

TYPE MONUMENT FD. R.R. SPIKE
~~ON SURFACE~~ - BELOW 3" DOWN
 LEFT - ~~C PAV'T~~ - RIGHT 6' LT.
4.8' TO LT. EDGE PAVEMENT
 S.L.M. _____
 GPS Northing: 653186.61 Easting: 1791749.65

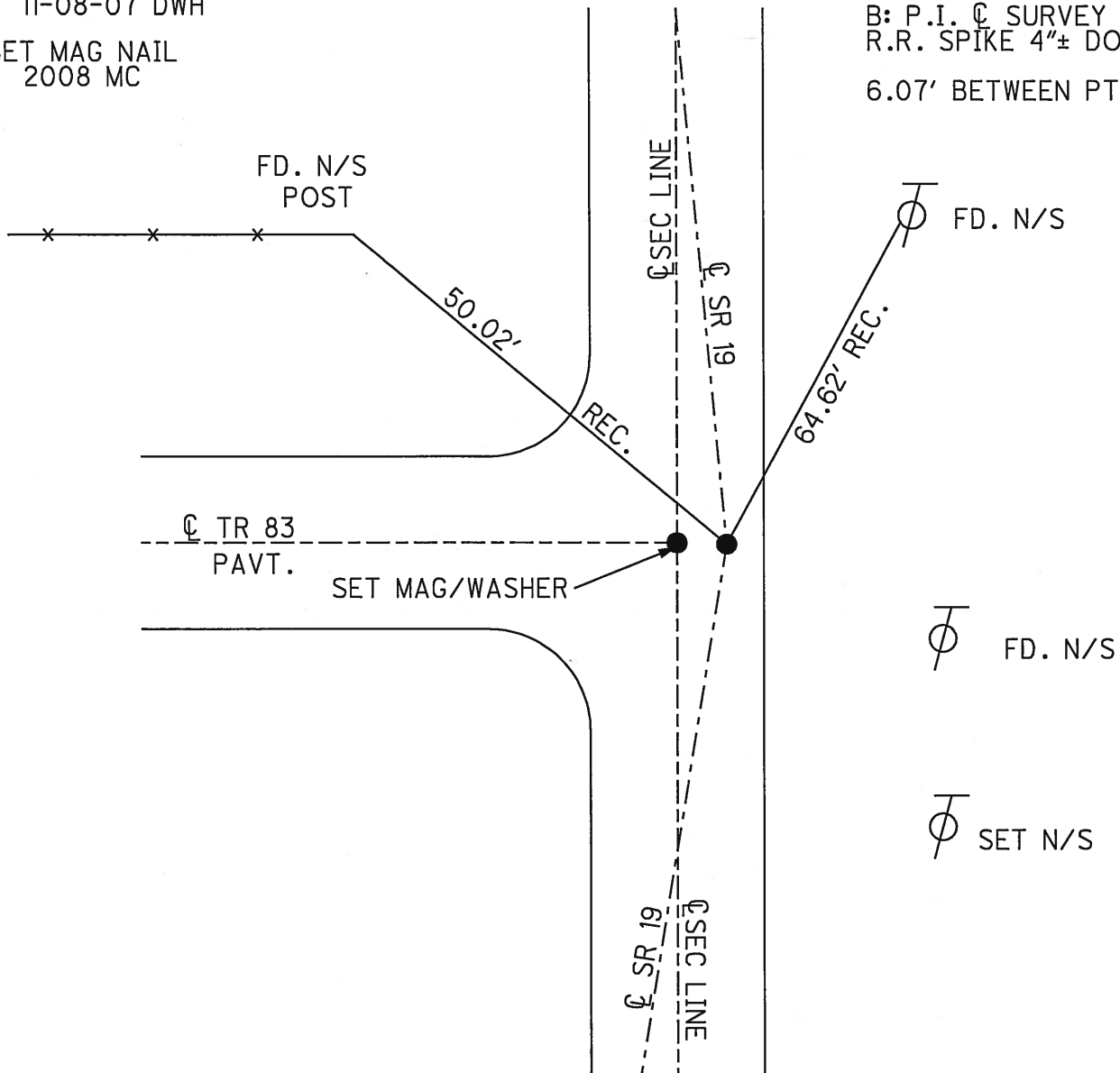
26



COULD NOT BE FOUND
11-08-07 DWH

NOTE: 10.4' SOUTH OF CL TR. 83
 B: P.I. C SURVEY
 R.R. SPIKE 4"± DOWN
 6.07' BETWEEN PTS.

SET MAG NAIL
2008 MC



O.D.O.T. DISTRICT 2 SURVEY OFFICE

PERSONNEL _____

REFERENCE NO. _____

SHEET _____ OF _____

NOTES CRONIN

H.C. RIPPLE

R.C. GEYMAN

DATE 7/23/90

WEATHER SUNNY

TEMP. 80°

ROUTE #19

COUNTY SANDUSKY

TOWNSHIP RICE

SECTION _____

T 6 N R 15 E

TYPE MONUMENT R.R. SPIKE

ON SURFACE - BELOW 5" ±

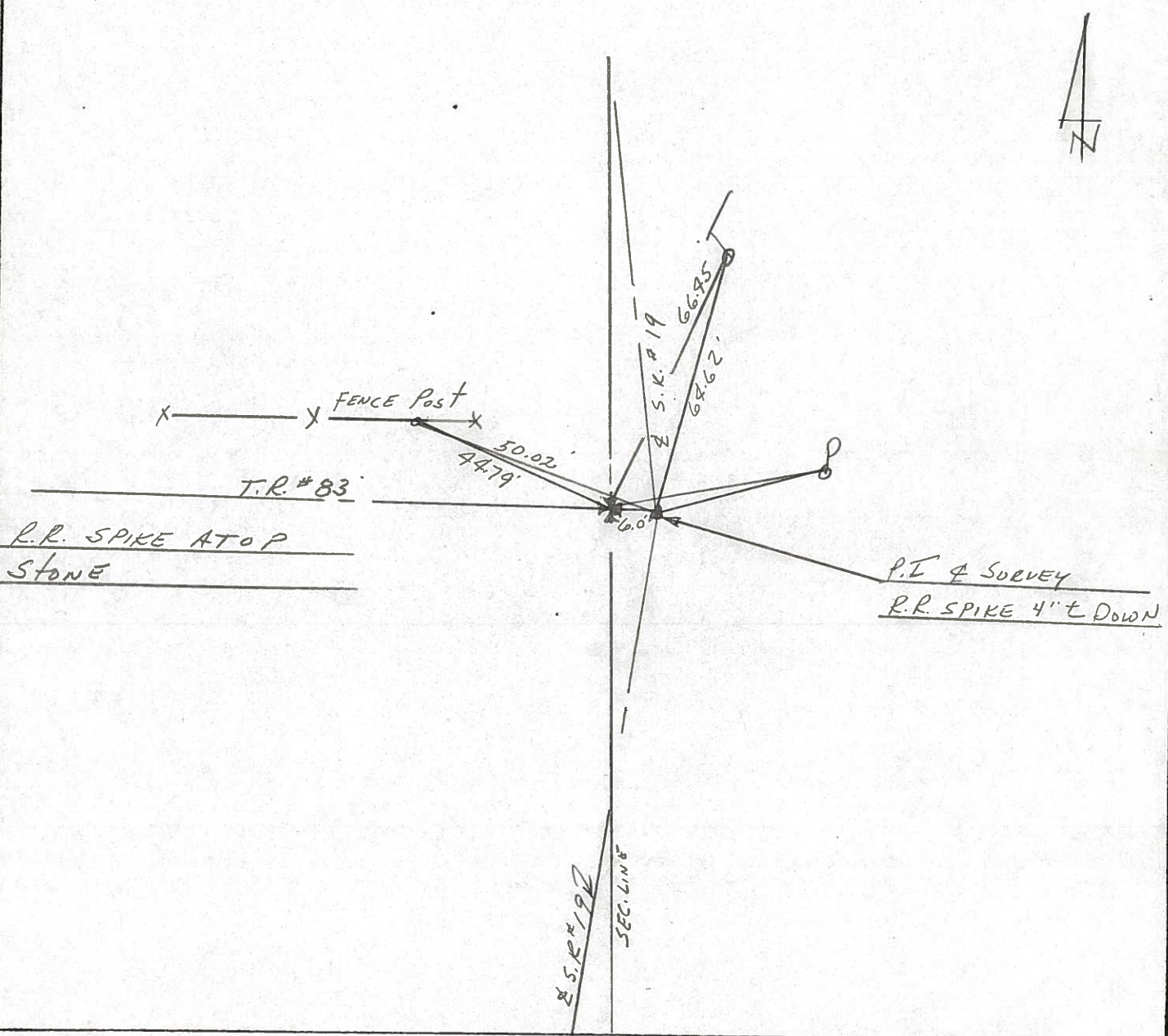
LEFT - € PAV'T. - RIGHT 6'

TO _____ EDGE PAVEMENT

S.L.M. _____

26

20	21
29	28



PERSONNEL TITLE PERSONNEL TITLE

Schneider _____ Potts _____

COUNTY Sandusky DATE Feb. 1968

Mosser _____

S. R. # 19 WEATHER _____

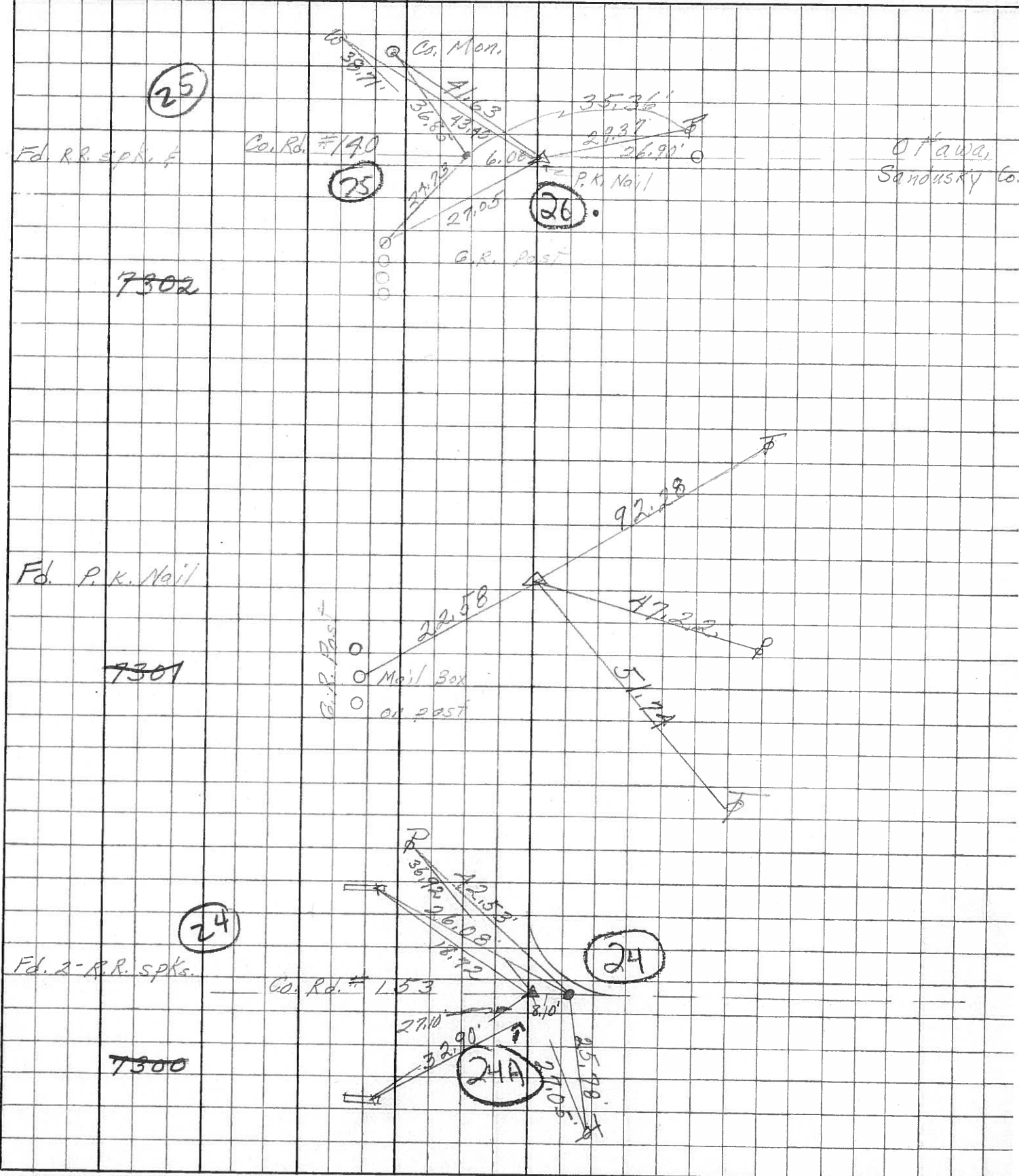
Barbour _____

SEC. North of Fremont TEMP. _____

Redding _____

DESCRIPTION Ties for Control Points JOB NO. _____

LEFT CENTER LINE RIGHT



PERSONNEL TITLE PERSONNEL TITLE

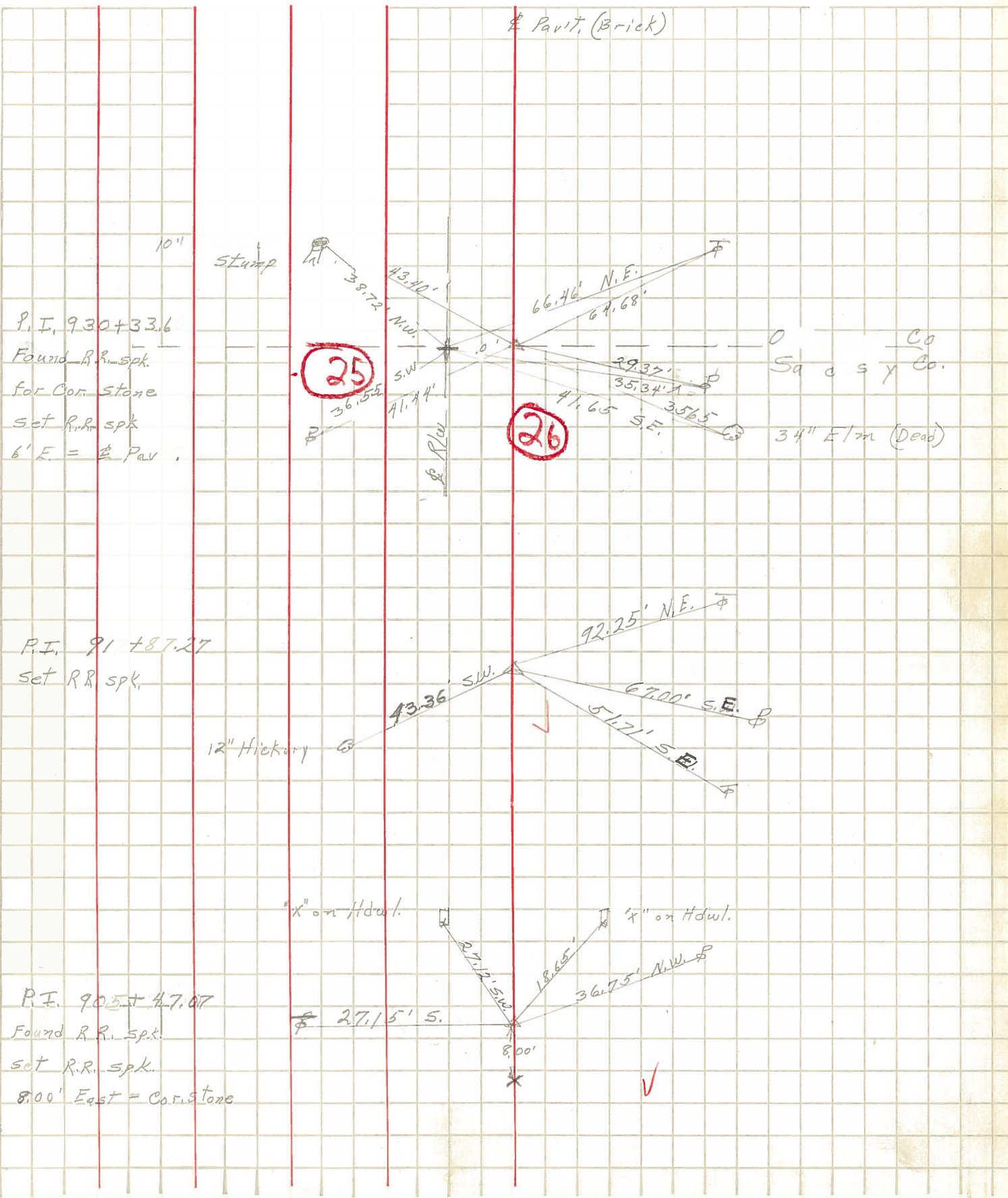
Schneider Zohn
Hawk Schwartz
Masser
Snyder

COUNTY Sandusky DATE 8-30-62

S. R. # 19 WEATHER F

SEC. TEMP.

DESCRIPTION Ties for Control Points LEFT CENTER LINE RIGHT JOB NO.



P.I. 930+33.6
Found R.R. spk.
for Cor. Stone
Set R.R. spk
6' E. = \$ Pav't.

P.I. 91+87.27
Set R.R. spk.

P.I. 905+47.07
Found R.R. Spk.
Set R.R. spk.
8.00' East = Cor. Stone

Co
Sandusky Co.
34" Elm (Dead)