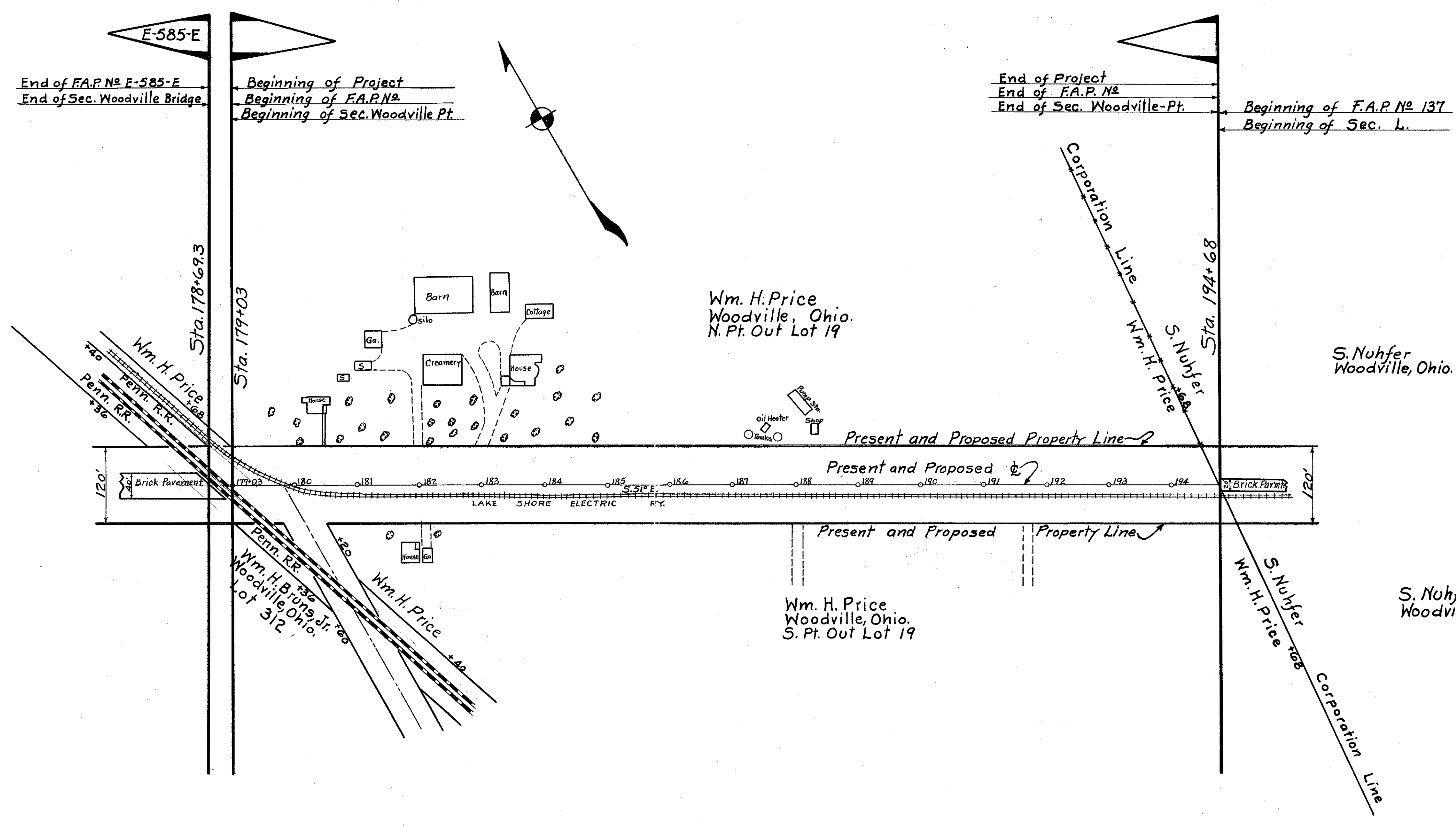


Scanned July 1997



I, Geo. M. Lieber, Resident Engineer  
of Sandusky County, do hereby certify  
that the above right-of-way is 120 ft. in width  
as shown in Vol. 1 Page 38 of Sandusky County  
Recorders' Plat Book Records.

*Geo. M. Lieber*  
Resident Engineer.

R3020 43 F-13