

FED. RD. DIVISION	STATE	PROJECT	FISCAL YEAR
2	OHIO		1947

1  
15

SANDUSKY COUNTY  
SAN-20-(6.82-10.28)

396

STATE OF OHIO  
DEPARTMENT OF HIGHWAYS  
SAN-20-(6.82 - 10.28)  
SANDUSKY COUNTY  
MADISON, WASHINGTON-TOWNSHIPS

**CONVENTIONAL SIGNS**

STATE LINE	-----
COUNTY LINE	-----
TOWNSHIP LINE	-----
SECTION LINE	-----
CENTER LINE	-----
PROPERTY LINE	-----
CITY OR VILLAGE LINE	-----
FENCE LINE	-----
STEAM RAILROAD	-----
POLE LINE	⊙ ⊙ ⊙ ⊙ ⊙
GUARD RAIL	-----
DRAIN PIPE, NEW	-----
DRAIN PIPE, OLD	-----

**INDEX OF SHEETS**

TITLE SHEET	1
TYPICAL SECTION	2
GENERAL NOTES	3
PAVEMENT COMPUTATIONS	4
GENERAL SUMMARY	4
PLAN AND PROFILE	5-15



Delivery Point, LINDSEY Average Haul, 4.5 Mi.

**LOCATION PLAN**

PORTION TO BE IMPROVED  
STATE HIGHWAYS  
OTHER HIGHWAYS  
DETOURS SHOWN THUS

**SCALE**

PLAN  
PROFILE - HORIZONTAL  
PROFILE - VERTICAL

1" = 50', 1" = 100'  
1" = 50', 1" = 100'  
1" = 5'

The Standard Specifications of The State of Ohio, Department of Highways, including changes and Supplemental Specifications listed in the Proposal shall govern this improvement.

The right-of-way necessary for this improvement will be provided by the State of Ohio.

I hereby approve these plans and declare that the making of this improvement will not require the closing to traffic of the highway and that provisions for the maintenance and safety of traffic will be as set forth on the plans and estimates.

Approved Stephen B. Robison  
Date 10-2-47 Division Deputy Director.

Approved \_\_\_\_\_  
Date \_\_\_\_\_ Chief Engineer, Bureau of Maintenance.

Approved G. P. Hoque  
Date 10-9-47 Chief Engineer, Bureau of Bridges & R.R. Crossings.

Approved George J. Thormyer  
Date 10-10-47 Chief Engineer, Bureau of Location & Design.

Approved \_\_\_\_\_  
Date \_\_\_\_\_ First Ass't. Director & Chief Engineer.

Approved Marion D. Thayer  
Date 10-10-47 Director of Highways.

**LINE DATA**

BEGIN PROJECT STA. 0-200 , SEC. 6.82  
END PROJECT STA. 64+16.04  
STATION EQUATION: STA. 179+42.5 BACK = STA. 0+00 AHEAD  
LENGTH OF PROJECT = 24,558.54 LIN. FT. - 4.651 MILES

BEGIN WORK STA. 0-500  
END WORK STA. 64+16.04  
STA. EQUATION STA. 179+42.5 BACK = STA. 0+00 AHEAD  
NO DEDUCTIONS  
NET LENGTH OF WORK = 24,858.54 LIN. FT. - 4.708 MILES

STANDARD	DRAWINGS
G-807	2-1-47

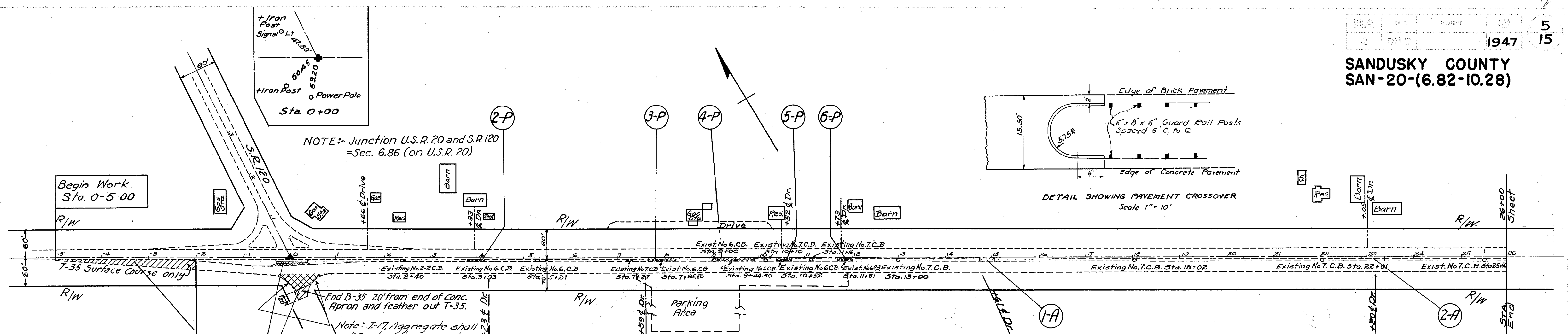
SUPPLEMENTAL SPECIFICATIONS
M-205.1 3-19-46

CONSTRUCTION BUREAU  
JUL 11 1955  
GROUND PHOTOLAB

396

FILE	SANDUSKY CO.	SAN-20-(6.82-10.28)
NO.	DATE OF LETTING	194
	CONTRACT NO.	

SANDUSKY COUNTY  
SAN-20-(6.82-10.28)

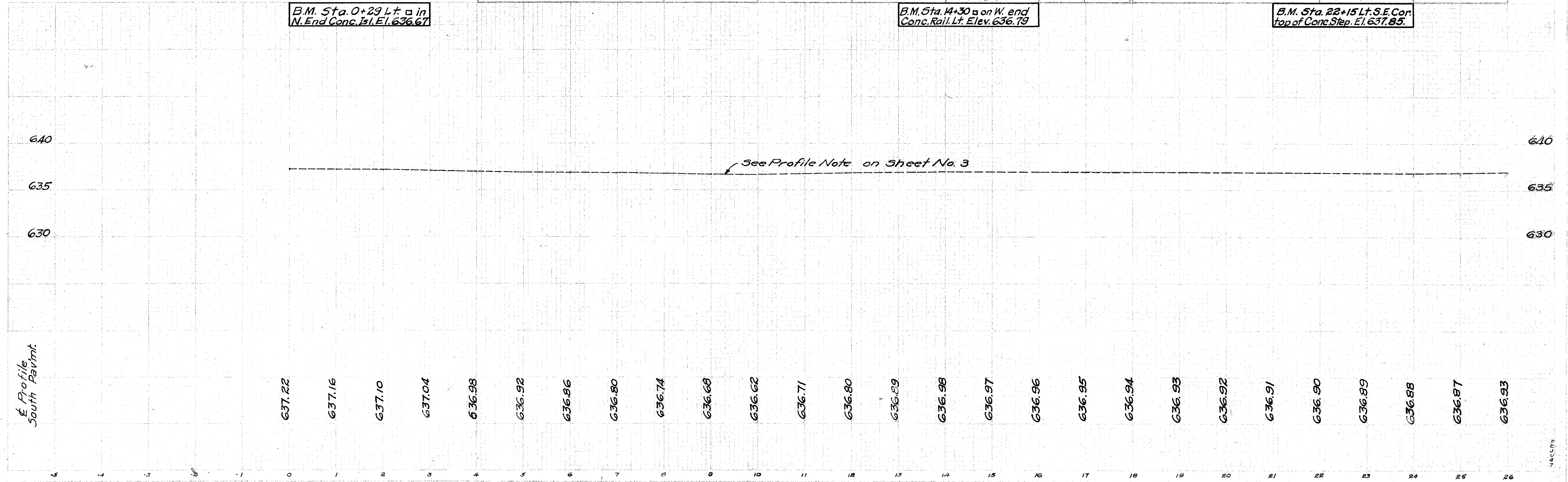


Ref. No.	Station		Location	T-35 1 1/4" Asphaltic Concrete Surface Course Sq. Yds.	B-35 1 1/4" Asphaltic Concrete Leveling Course Sq. Yds.	E-4 Borrow & L-9 Seeding to be deducted Lin. Ft.	T-30 Bituminous Tack Coat Sq. Yds.	I-17 Aggregate Additions & Deductions Lin. Ft.		Ref. No.	Station	Location	I-17 Aggregate Cu. Yds.	E-4 Borrow & L-9 Seeding to be deducted Lin. Ft.
	From	To						Add.	Deduct.					
1-P	0+5+00	1+00	Rt.	671.52	141.30	60	671.52	360		1-A	14+70	Ctr.	0.5	20
2-P	3+64	4+18	Ctr.	65.26	65.26	54	65.26			2-A	23+09	Ctr.	1.0	40
3-P	7+45	8+44	Ctr.	142.76	142.76	99	142.76							
4-P	8+95	9+94	Ctr.	142.76	142.76	99	142.76							
5-P	10+25	10+79	Ctr.	65.26	65.26	54	65.26							
6-P	11+54	12+08	Ctr.	65.26	65.26	54	65.26							
Totals				1152.82	622.60	420	1152.82	360		Totals			1.5	60

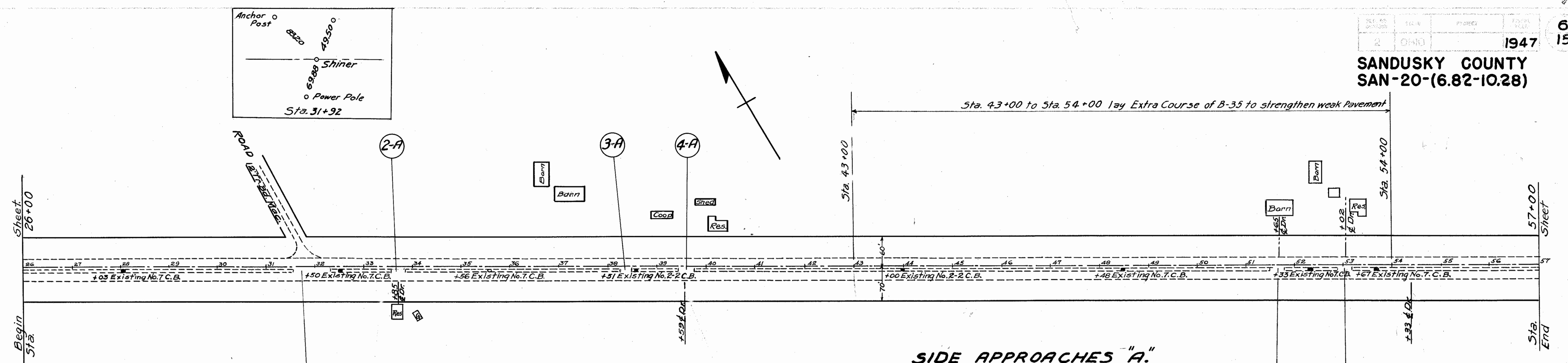
B.M. Sta. 0+29 Lt. in N. End Conc. Is. E. 636.67

B.M. Sta. 14+30 on W. end Conc. Rail. Lt. Elev. 636.79

B.M. Sta. 22+15 Lt. S.E. Cor. top of Conc. Step. E. 637.85



**SANDUSKY COUNTY  
SAN-20-(6.82-10.28)**

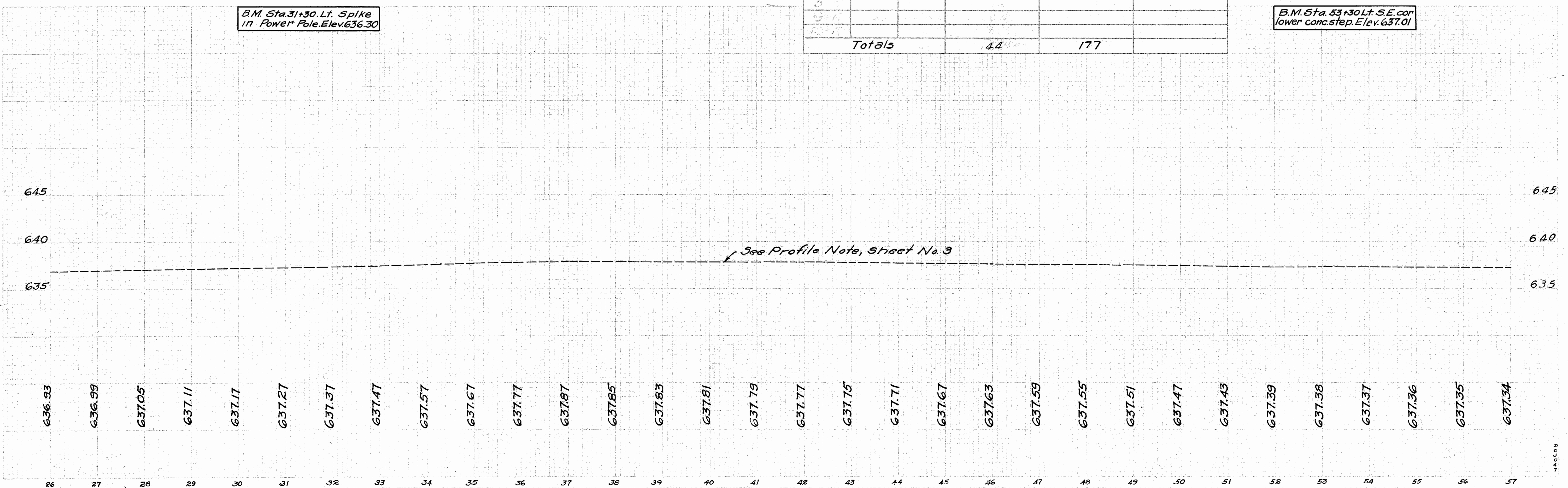


**SIDE APPROACHES "A."**

Ref. No.	Station	Location	I-17 Aggregate	E-4 Borrow & L-9 Seeding To be deducted Lin. Ft.
1-A	3+85	Ctr.	1.2	50
2-A	33+26	Ctr.	0.0	24
3-A	38+32	Ctr.	0.6	24
4-A	39+59	Ctr.	0.9	35
5-A	51+56	Ctr.	0.6	24
6-A	53+04	Ctr.	0.5	20
Totals			4.4	177

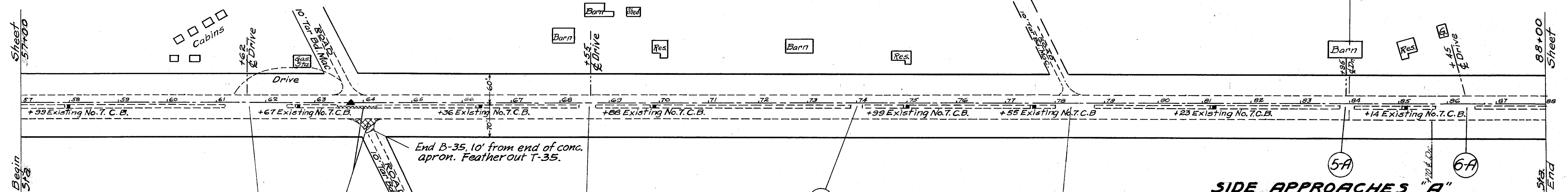
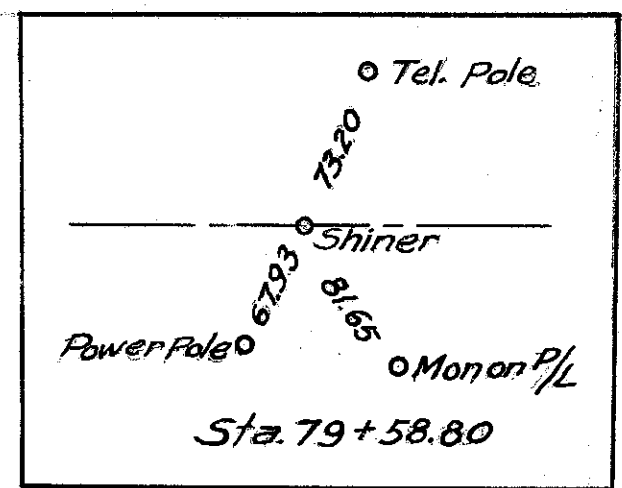
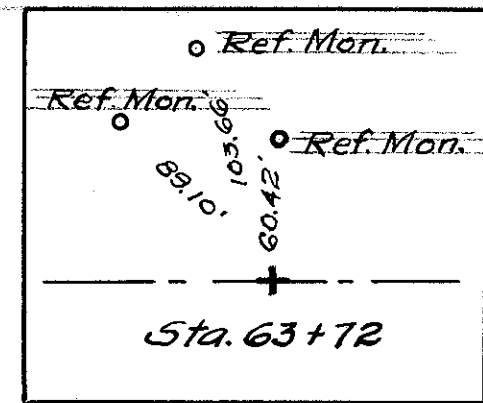
B.M. Sta. 31+30 Lt. Spike in Power Pole. Elev. 636.30

B.M. Sta. 53+30 Lt. S.E. cor lower conc. step. Elev. 637.01



**SANDUSKY COUNTY  
SAN-20-(6.82-10.28)**

Sta. 84+00 to Sta. 161+00 - Lay Extra Course of B-35 to strengthen weak pavement.



**EXTRA PAVEMENT "P"**

Ref. No.	Station		Location	T-30 Bituminous Tack Coat Sq. Yds.	T-35 1/4" Asphaltic Concrete Surface Course Sq. Yds.	B-35 1/2" Asphaltic Concrete Leveling Course Sq. Yds.	*E-4 Borrow & L-9 Seeding to be deducted Lin. Ft.
	From	To					
1-P	63+44	64+53	Gr & Rt.	207	207	155	70
Totals				207	207	155	70

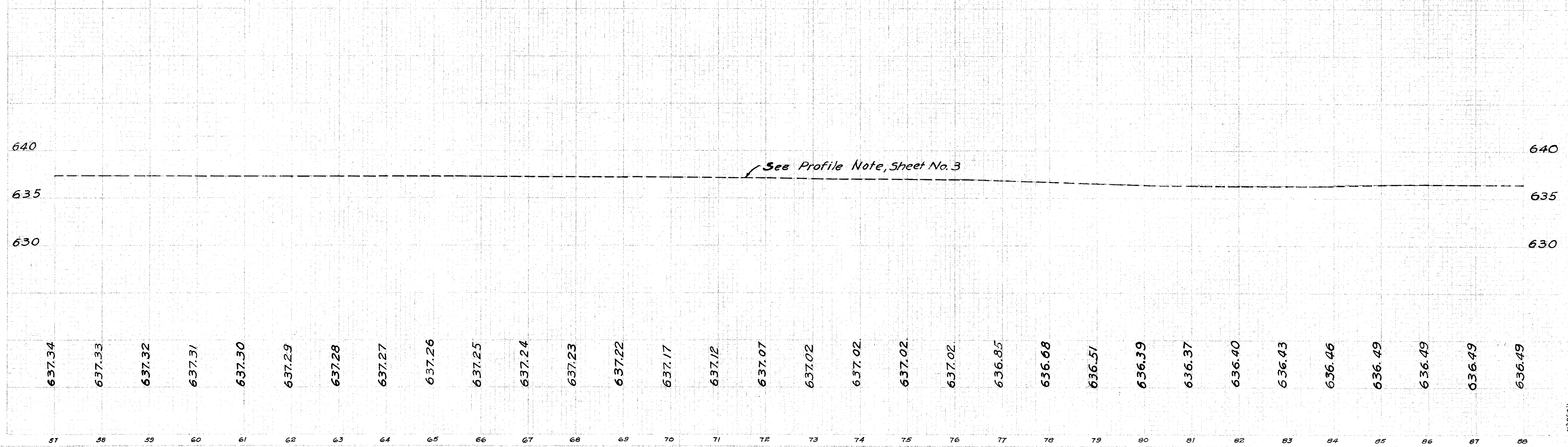
\* I-17 Aggregate to be deducted - 16 Lin. Ft.

**SIDE APPROACHES "A"**

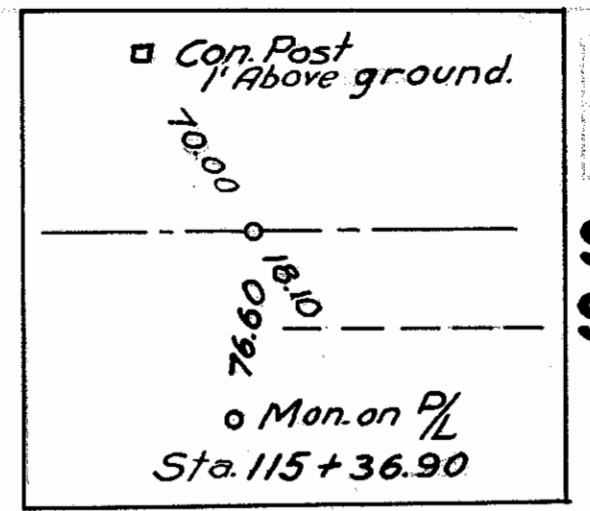
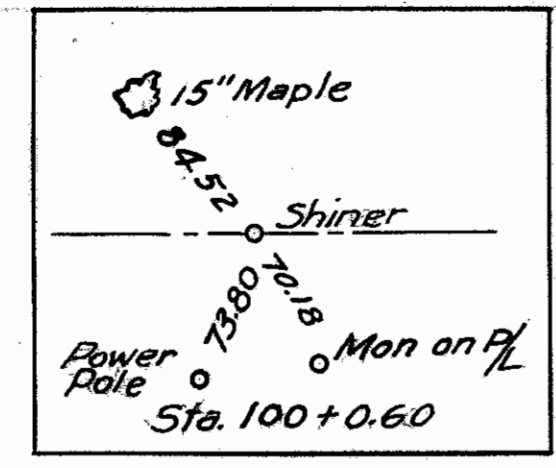
Ref. No.	Station		Location	I-17 Aggregate 'Cu. Yds.	E-4 Borrow & L-9 Seeding to be deducted Lin. Ft.
	From	To			
1-A	61+40	62+20	Ctr.	2.0	80
2-A	68+40	68+70	Ctr.	0.7	30
3-A	73+82	74+06	Ctr.	0.6	24
4-A	77+97	78+62	Ctr.	1.6	65
5-A	83+83	84+70	Ctr.	0.6	24
6-A	85+75	86+55	Ctr.	2.0	80
Totals				7.5	303

B.M. Sta. 62+20 Lt. + on unused Pump Island Elev. 636.19

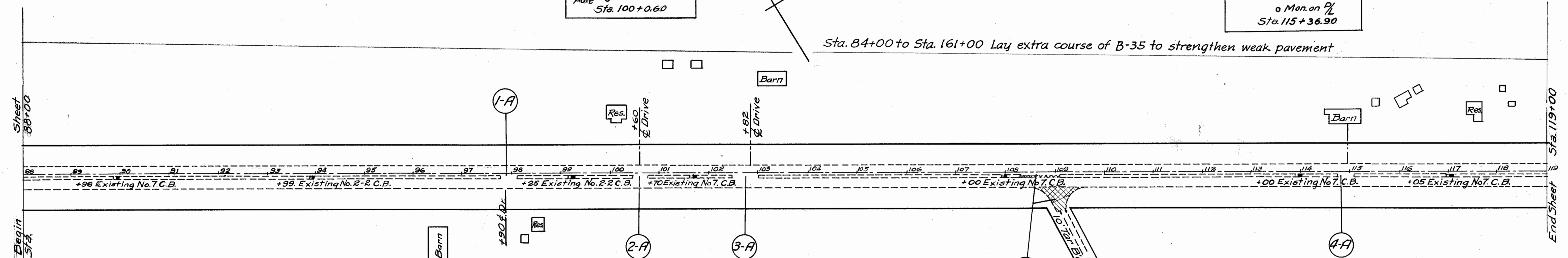
B.M. Sta. 86+50 Lt. on Stone walk & slab. Elev. 635.05



**SANDUSKY COUNTY  
SAN-20-(6.82-10.28)**



Sta. 84+00 to Sta. 161+00 Lay extra course of B-35 to strengthen weak pavement



**EXTRA PAVEMENT "P"**

Ref. No.	Station		Location	T-35 1 1/4" Asphaltic Concrete Surface Course Sq. Yds.	B-35 1 1/4" Asphaltic Concrete Leveling Course Sq. Yds.	T-30 Bituminous Tack Coat Sq. Yds.	*E-4 Borrow & L-9 Seeding to be deducted Lin. Ft.
	From	To					
1-P	108+35	109+05	Ctr. & Rt.	182.6	140.2	182.6	70
Totals				182.6	140.2	182.6	70

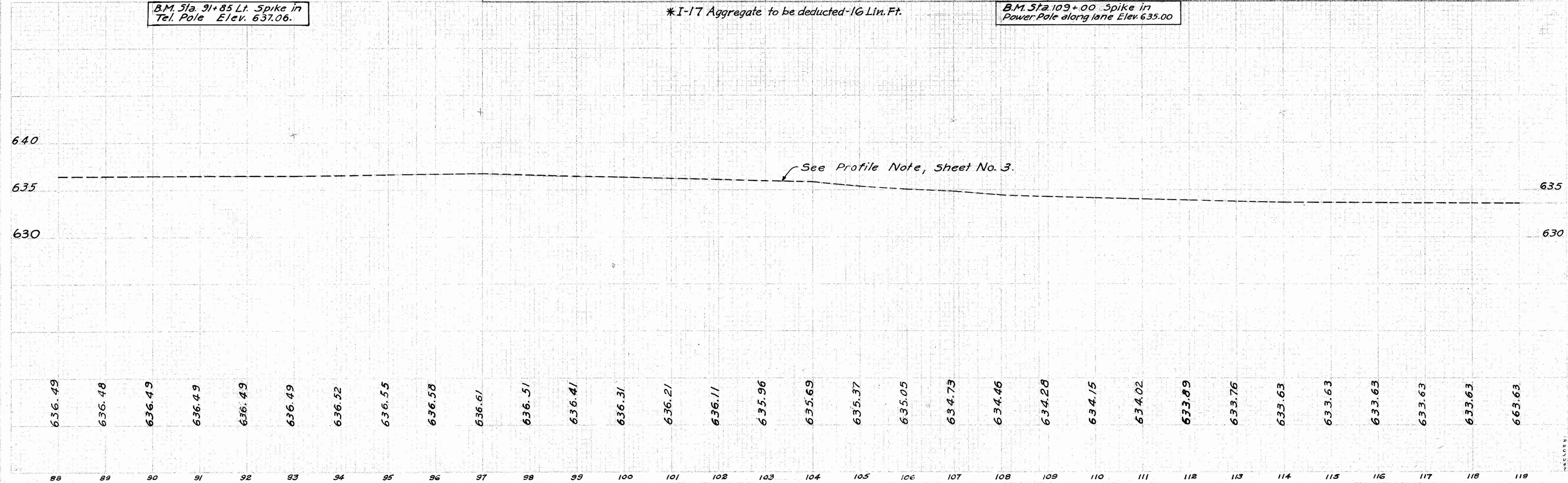
**SIDE APPROACHES "A."**

Ref. No.	Station		Location	I-17 Aggregate Cu. Yds.	E-4 Borrow & L-9 Seeding to be deducted Lin. Ft.
	From	To			
1-A	97+75	98+05	Ctr.	0.7	30
2-A	100+45	100+75	Ctr.	0.7	30
3-A	102+67	102+97	Ctr.	0.7	30
4-A	144.77	115+07	Ctr.	0.7	30
Totals				2.8	120

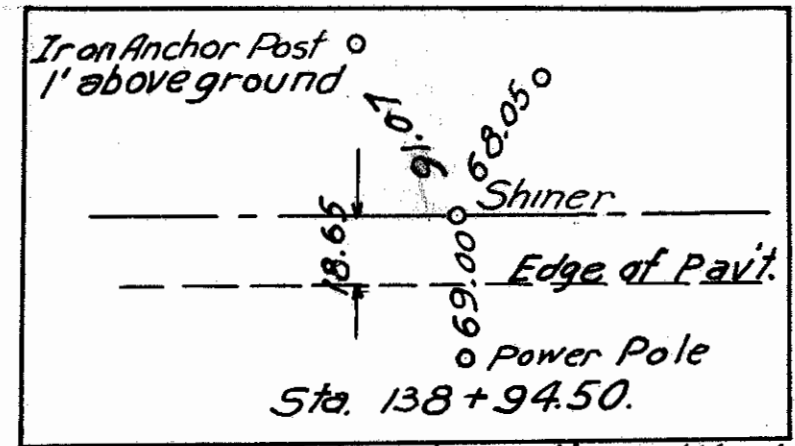
B.M. Sta. 91+85 Lt. Spike in Tel. Pole Elev. 637.06.

\*I-17 Aggregate to be deducted -16 Lin. Ft.

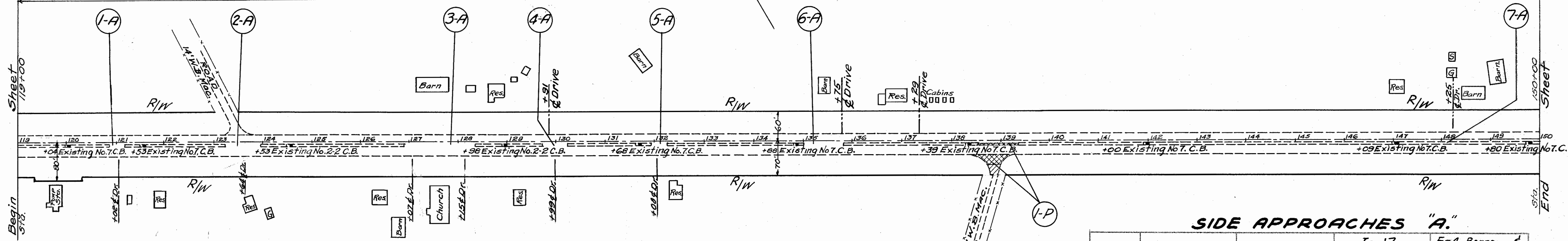
B.M. Sta. 109+00 Spike in Power Pole along lane Elev. 635.00



**SANDUSKY COUNTY  
SAN-20-(6.82-10.28)**



Sta. 84+00 to Sta. 161+00 Lay Extra Course of B-35 To Strengthen Weak Pavement.



**EXTRA PAVEMENT "P."**

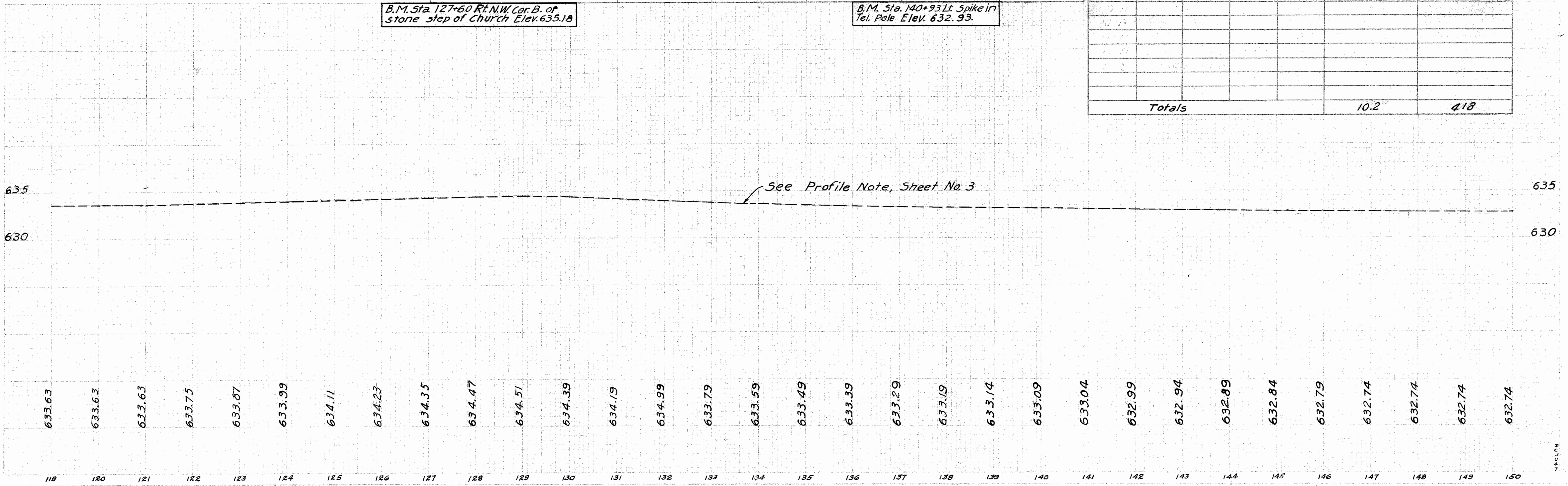
Ref. No.	Station		Location	T-30 Bituminous Tack Coat Sq. Yds.	T-35 1/4" Asphaltic Concrete Surface Course Sq. Yds.	B-35 1/4" Asphaltic Concrete Leveling Course Sq. Yds.	E-4 Borrow & L-9 Seeding to be deducted Lin. Ft.	I-17 Aggregate Sq. Yds.
	From	To						
I-P	133+56	134+26	Ctr.	187.6	187.6	145.4	70	-18
Totals				187.6	187.6	145.4	70	-18

B.M. Sta. 127+60 Rt. N.W. Cor. B. of stone step of Church Elev. 635.18

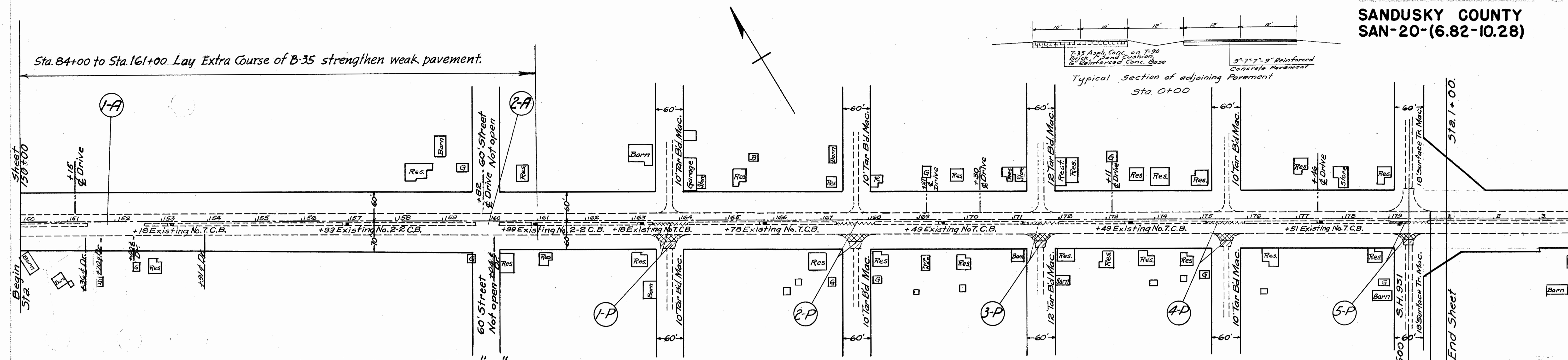
B.M. Sta. 140+93 Lt. Spike in Tel. Pole Elev. 632.93.

**SIDE APPROACHES "A."**

Ref. No.	Station		Location	I-17 Aggregate Cu. Yds.	E-4 Borrow & L-9 Seeding to be deducted Lin. Ft.
	From	To			
1-A	120+90	121+20	Ctr.	0.7	30
2-A	123+18	123+98	Ctr.	2.0	80
3-A	126+87	128+35	Ctr.	3.6	148
4-A	129+70	130+20	Ctr.	1.0	40
5-A	131+93	132+23	Ctr.	0.7	30
6-A	135+00	135+80	Ctr.	1.5	60
7-A	148+10	148+40	Ctr.	0.7	30
Totals				10.2	418



SANDUSKY COUNTY  
SAN-20-(6.82-10.28)



EXTRA PAVEMENT "P"

Ref. No.	Station		Location	T-30	T-35 1/4"	B-35 1/4"	E-4 Borrow &	I-17
	From	To		Bituminous Tack Coat Sq. Yds.	Asphaltic Concrete Surface Course Sq. Yds.	Asphaltic Concrete Leveling Course Sq. Yds.	L-9, Seeding to be deducted Lin. Ft.	Aggregate to be deducted Lin. Ft.
1-P	163+40	164+70	Ctr. & Rt.	142.8	142.8	100.6	70	13
2-P	167+31	168+11	Ctr. & Rt.	141.6	141.6	99.4	70	13
3-P	171+22	172+02	Ctr. & Rt.	139.2	139.2	97.0	70	13
4-P	175+12	175+92	Ctr. & Rt.	134.6	134.6	42.4	70	13
5-P	179+02	0+47.5	Ctr. & Rt.	145.6	145.6	91.6	90	14
<b>Totals</b>				703.8	703.8	431.0	-370	-66

SIDE APPROACHES "A"

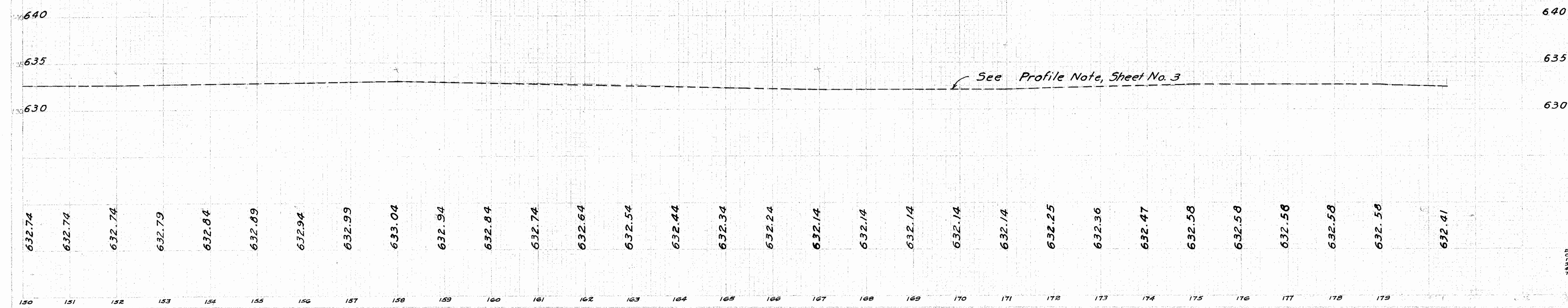
Ref. No.	Station		Location	I-17	E-4 Borrow &
	From	To		Aggregate Cu. Yds.	L-9 Seeding to be deducted Lin. Ft.
1-A	151+00	152+65	ctr.	1.8	90
2-A	159+57	160+07	ctr.	0.6	50
<b>Totals</b>				2.4	140

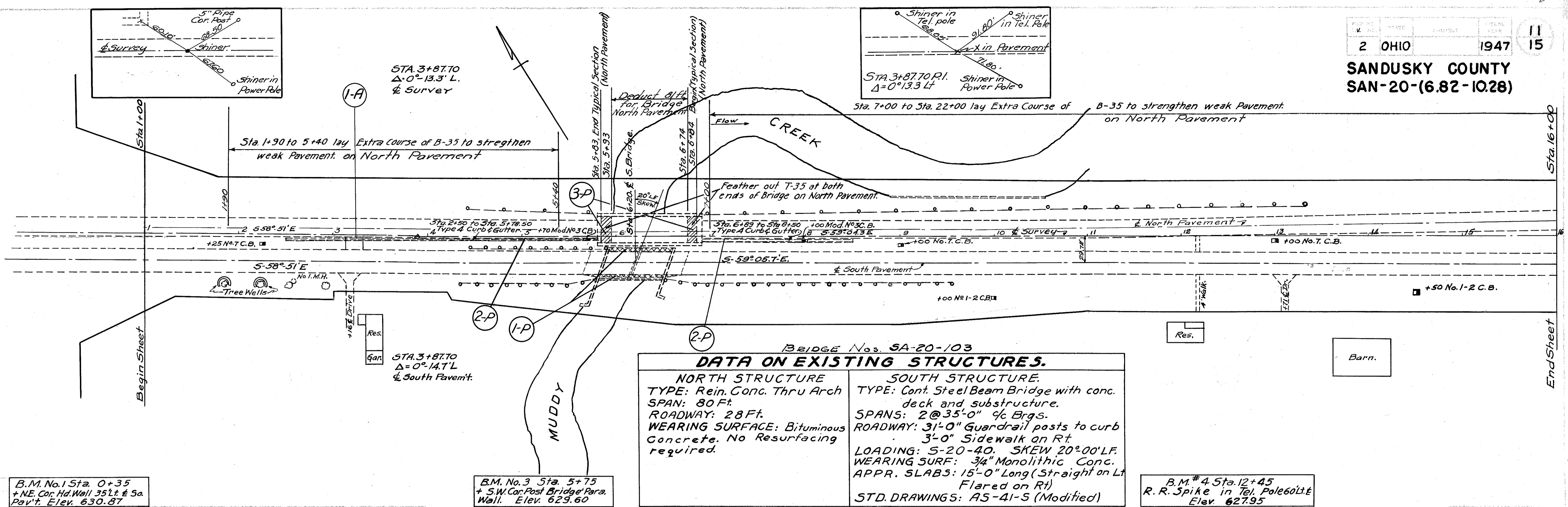
SEC. 10.28  
STATION 0+48.5  
END TYPICAL SECTION "A".  
BEGIN TYPICAL SECTION "B"

STATION EQUATION.  
Station 179+42.5 Back.  
EQUALS  
Station 0+00 Ahead

B.M. Sta. 167+49.1 + in E. end  
com. walk. Elev. 631.72.

B.M. Sta. 179+75.1 + in NE Cor.  
Headwall Elev. 630.87





**BRIDGE No. SA-20-103**

**DATA ON EXISTING STRUCTURES.**

NORTH STRUCTURE	SOUTH STRUCTURE
TYPE: Rein. Conc. Thru Arch	TYPE: Cont. Steel Beam Bridge with conc. deck and substructure.
SPAN: 80 Ft.	SPAN: 2@35'-0" 9/16 Brgs.
ROADWAY: 28 Ft.	ROADWAY: 31'-0" Guardrail posts to curb
WEARING SURFACE: Bituminous Concrete. No Resurfacing required.	3'-0" Sidewalk on Rt.
	LOADING: S-20-40. SKEW 20°00' L.F.
	WEARING SURF: 3/4" Monolithic Conc.
	APPR. SLABS: 15'-0" Long (Straight on Lt. Flared on Rt.)
	STD. DRAWINGS: AS-41-S (Modified)

**EXTRA PAVEMENT "P"**

Ref. No.	Station		Location	T-30 Bituminous Tack Coat Sq. Yds.	T-35 1/4" Asphaltic Concrete Surface Course Sq. Yds.	B-35 1/4" Asphaltic Concrete Leveling Course Sq. Yds.	Deductions	
	From	To					E4&L-9 Lin. Ft.	I-17 Lin. Ft.
1-P*	5+68	6+70	Rt.	59.3	59.3	59.3	72	72
2-P*	2+50 6+89	5+78.5 8+50	Ctr.	81.6	81.6	81.6	489	
3-P	Bridge Approaches North Pavement		Ctr. & Lt.	62.2	62.2		106	106
<b>Totals</b>				<b>203.1</b>	<b>203.1</b>	<b>140.9</b>	<b>667</b>	<b>178</b>

**SIDE APPROACHES "A"**

Ref. No.	Station		Location	I-17 Aggregate Cu. Yds.	E-4 Borrow & L-9 Seeding to be deducted Lin. Ft.
	From	To			
1-A	3+01	3+31	Ctr.	1.5	30
<b>Totals</b>				<b>1.5</b>	<b>30</b>

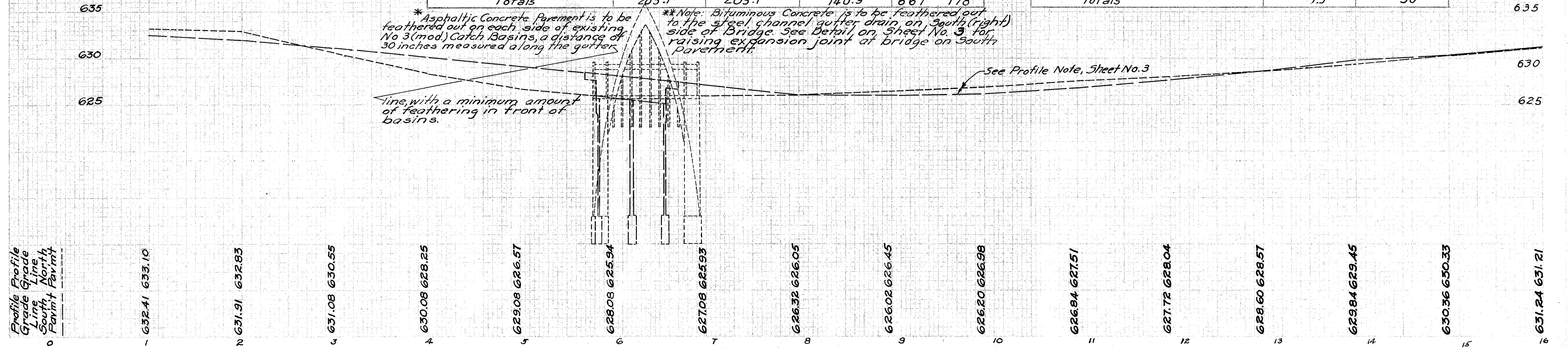
B.M. No. 1 Sta. 0+35  
+ NE. Cor. Hd. Wall 35 Lt. & 50  
Pav't. Elev. 630.87

B.M. No. 3 Sta. 5+75  
+ S.W. Cor. Post Bridge Para.  
Wall. Elev. 629.60

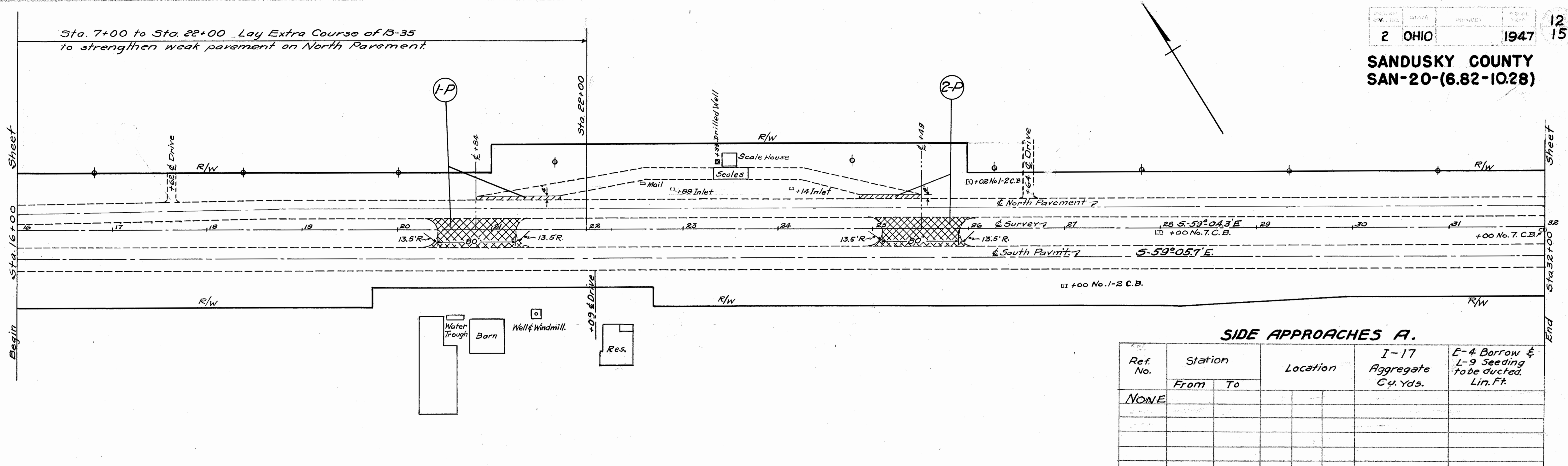
B.M. # 4 Sta. 12+45  
R.R. Spike in Tel. Pole 60 Lt. &  
Elev. 627.95

\* Asphaltic Concrete Pavement is to be feathered out on each side of existing No 3 (mod) Catch Basins, a distance of 30 inches measured along the gutter line, with a minimum amount of feathering in front of basins.

\*\* Note: Bituminous Concrete is to be feathered out to the steel channel gutter drain on South (right) side of Bridge. See Detail on Sheet No. 3 for raising expansion joint at bridge on South Pavement.







**SIDE APPROACHES A.**

Ref. No.	Station		Location	I-17 Aggregate Cu. Yds.	E-4 Borrow & L-9 Seeding to be ducted. Lin. Ft.
	From	To			
NONE					

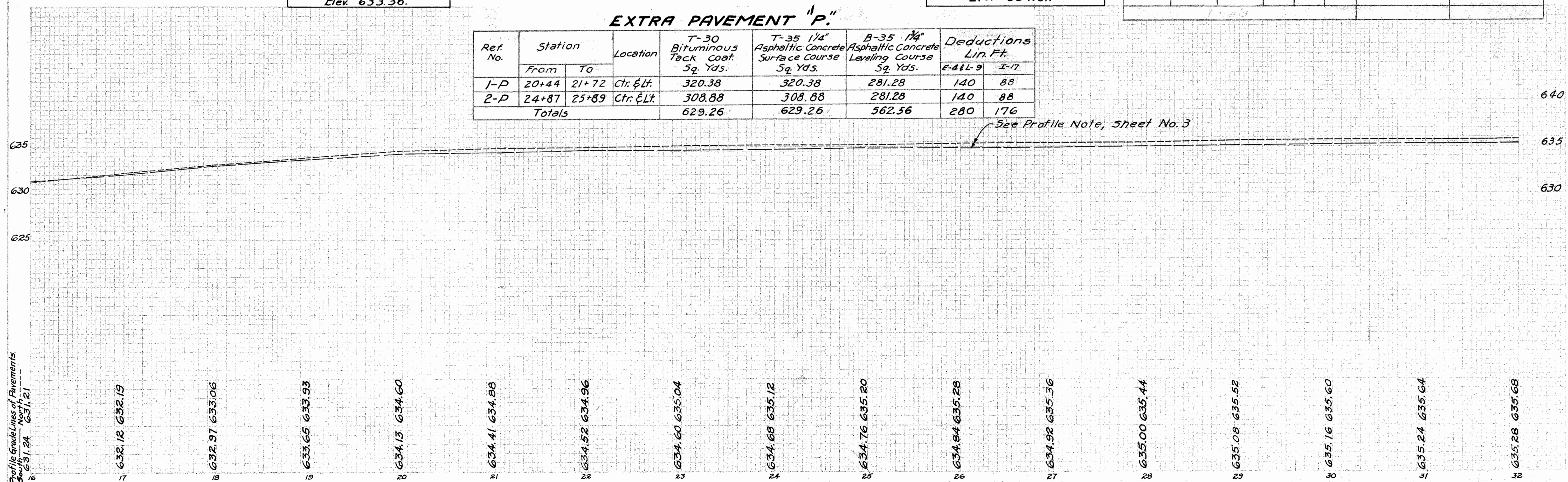
B.M. Sta. 20+02  
 R.R. Spike in Tel. Pole 63' Lt. &  
 Elev. 633.36.

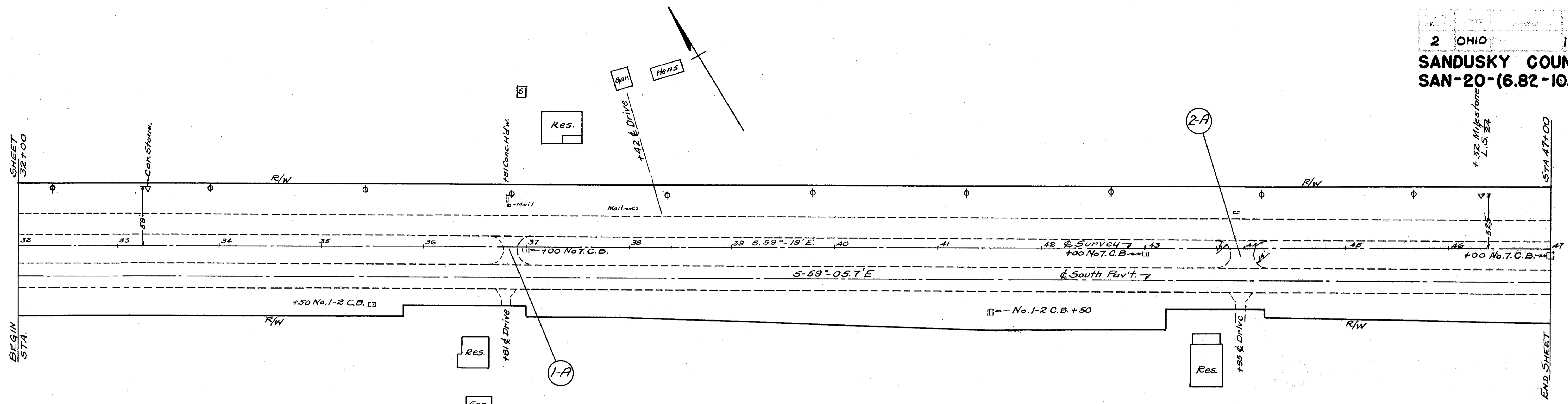
B.M. Sta. 26+28  
 R.R. Spike in Tel. Pole 62' Lt. &  
 Elev. 634.81.

**EXTRA PAVEMENT "P"**

Ref. No.	Station		Location	T-30 Bituminous Tack Coat. Sq. Yds.	T-35 1/4" Asphaltic Concrete Surface Course Sq. Yds.	B-35 1/4" Asphaltic Concrete Levelling Course Sq. Yds.	Deductions Lin. Ft.	
	From	To					E-4 & L-9	I-17
1-P	20+44	21+72	Ctr. & Lt.	320.38	320.38	281.28	140	88
2-P	24+87	25+89	Ctr. & Lt.	308.88	308.88	281.28	140	88
Totals				629.26	629.26	562.56	280	176

See Profile Note, Sheet No. 3





**SIDE APPROACHES "A"**

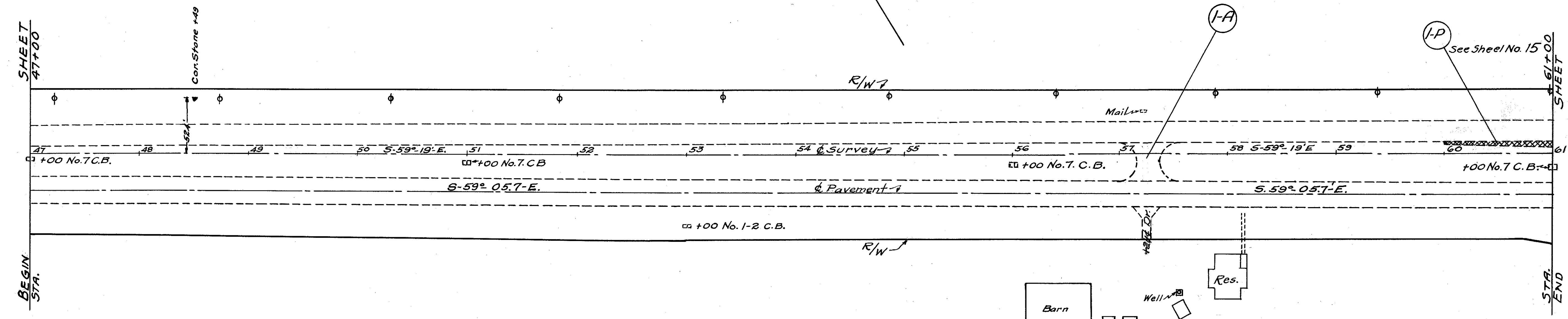
Ref. No.	Station		Location		I-17, Aggregate Cu. Yds.	E-4 Borrow & L-9 Seeding to be deducted Lin. Ft.
	From	To	Ctr.	Rt.		
1-A	36+76	36+96	Ctr.	Rt.	1.0	40
2-A	43+83	44+21	Ctr.		1.8	76
<b>Totals</b>					<b>2.8</b>	<b>116</b>

B.M. Sta 39+80  
 R.R. Spike in Tel. Pole 53' Lt. E.  
 Elev. 636.52.



Profile Grade Lines  
 South North Pavmt Pavmt

**SANDUSKY COUNTY**  
**SAN-20-(6.82-10.28)**



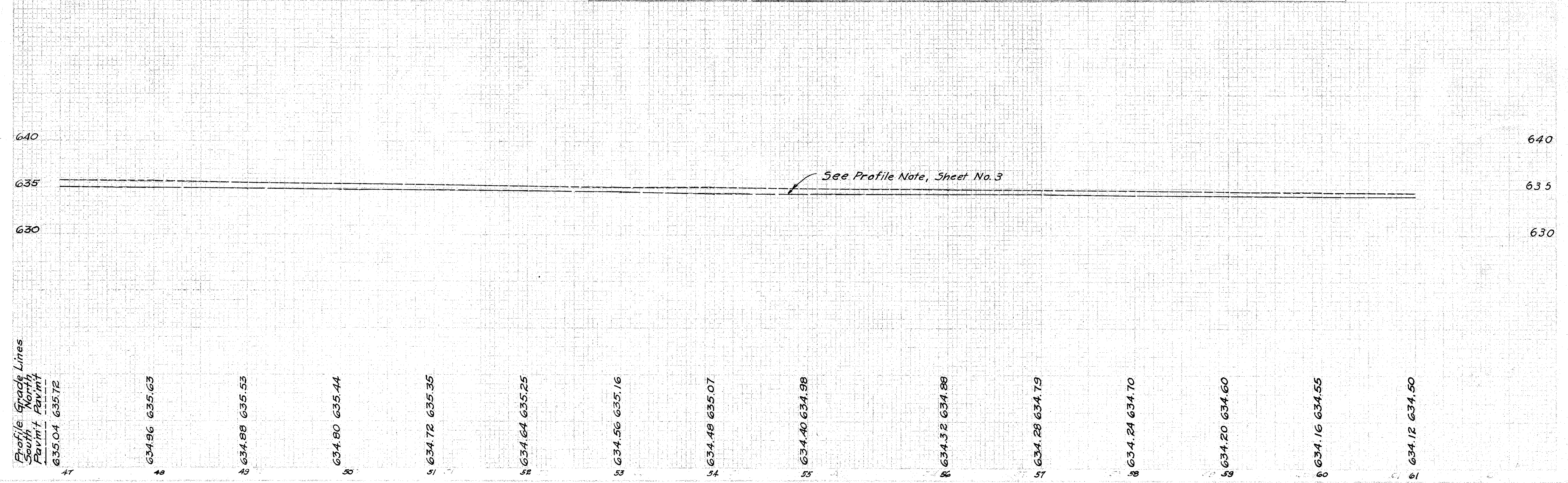
**SIDE APPROACHES "A."**

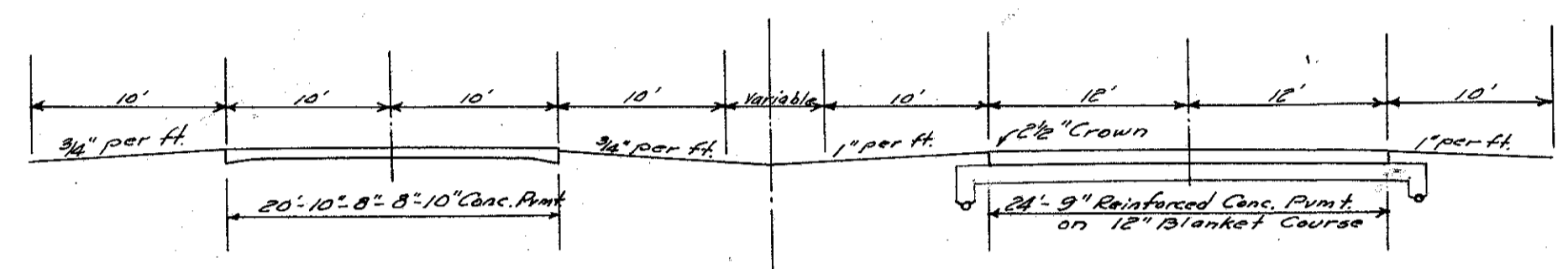
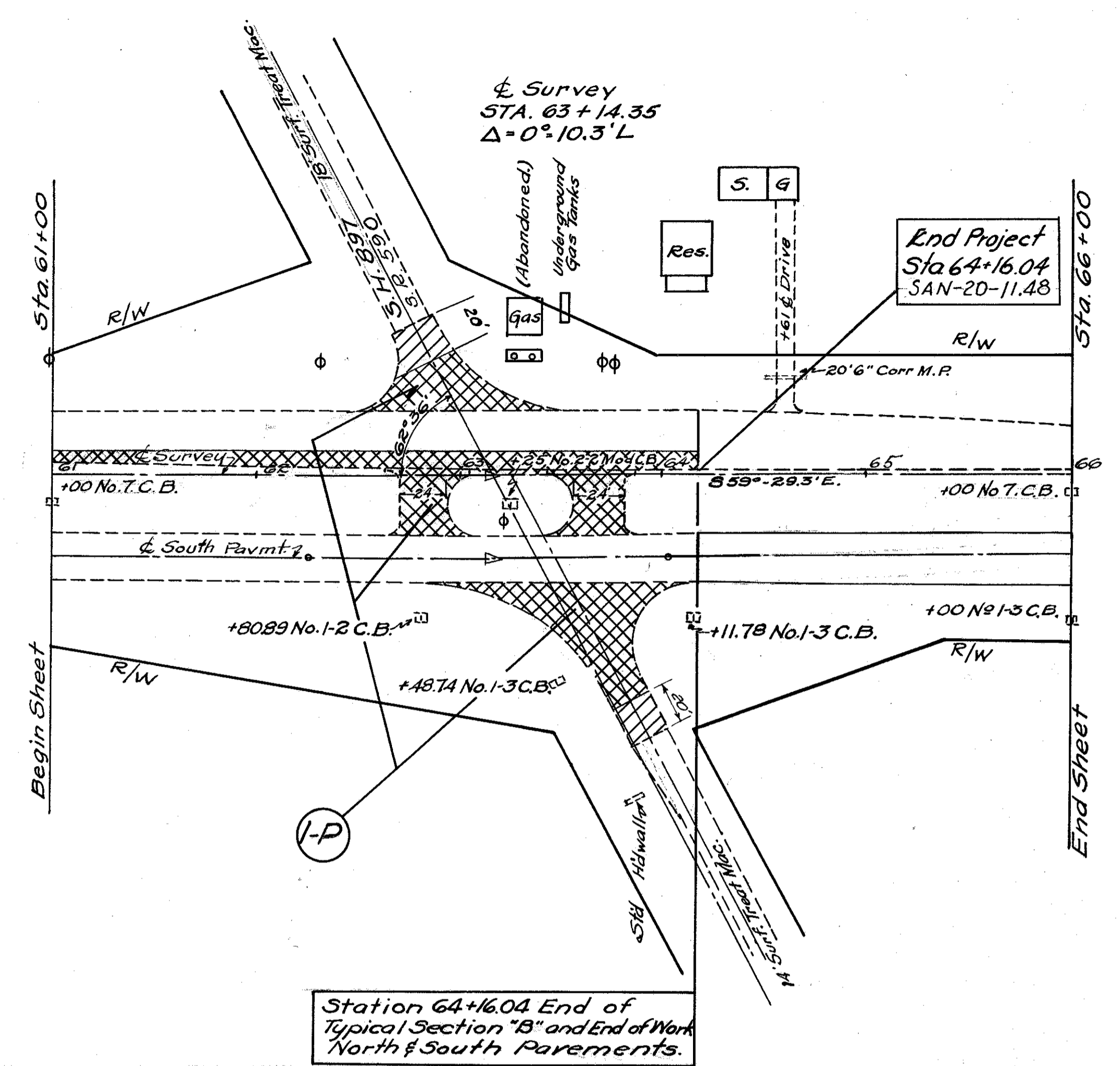
Ref. No.	Station		Location	I-17 Aggregate Cu. Yds.	E-4 Borrow & L-9 Seeding to be deducted Lin. Ft.
	From	To			
I-A	57+16	57+36	Rt.	1.2	50
Totals				1.2	50

B.M. Sta. 47+23  
R.R. Spike in Tel. Pole 52 Lt &  
Elev. 635.06.

B.M. Sta. 53+34  
R.R. Spike in Tel. Pole 54 Lt &  
Elev. 634.37.

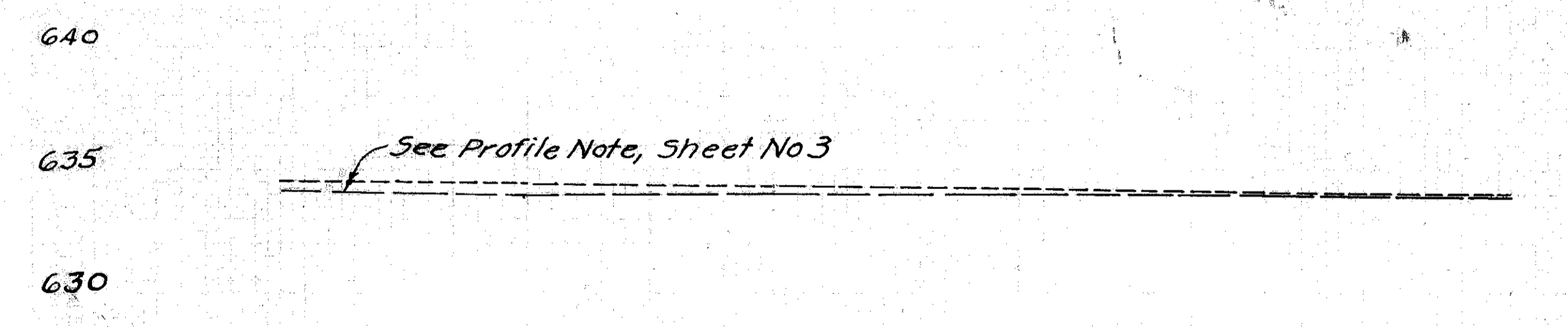
B.M. Sta. 59+40  
R.R. Spike in Tel. Pole 56 Lt &  
Elev. 634.73.





TYPICAL SECTION OF ADJOINING PAVEMENT  
**EXTRA PAVEMENT "P".**

Ref. No.	Station		Location	T-30	T-35 1/4"	B-35 1/4"	E-4 Borrow &	I-17
	From	To		Bituminous Tack Coat. Sq. Yds.	Asphaltic Concrete Surface Course Sq. Yds.	Asphaltic Concrete Leveling Course Sq. Yds.	L-9 Seeding Additions. Lin. Ft.	Deductions Lin. Ft.
I-P	60+00	64+16.04	Rt. & Lt.	631.28	631.28	541.28	10	150
Totals				631.28	631.28	541.28	10	150



- Profile Profile
- Grade Grade
- Line Line
- North North
- Pavmt Pavmt
- 634.12 634.50
- 634.08 634.45
- 634.04 634.40
- 634.00 634.28
- 633.96 634.17
- 633.94 634.05