

FED. RD. DIST. NO.	STATE	PROJECT	FISCAL YEAR
10	OHIO		1945

SANDUSKY COUNTY
S. H. 275, SEC. L (Pt.)
S. H. 52, SEC. A (Pt.)

STATE OF OHIO DEPARTMENT OF HIGHWAYS

TOLEDO~ELMORE ROAD, S. H. 52, SEC. A (PT.) FREMONT~PERRYSBURG ROAD, S. H. 275, SEC. L (PT.) SANDUSKY COUNTY WOODVILLE AND WASHINGTON TOWNSHIPS

CONVENTIONAL SIGNS

STATE LINE	----
COUNTY LINE	-----
TOWNSHIP LINE	- - - - -
SECTION LINE	- - - - -
CENTER LINE	-----
PROPERTY LINE	-----
CITY OR VILLAGE LINE	-----
FENCE LINE	x - x - x
STEAM RAILROAD	====
ELECTRIC RAILROAD	====
POLE LINE	⌘ Telephone ⌘ Power
GUARD RAIL	-----
DRAIN PIPE, NEW	-----
DRAIN PIPE, OLD	-----

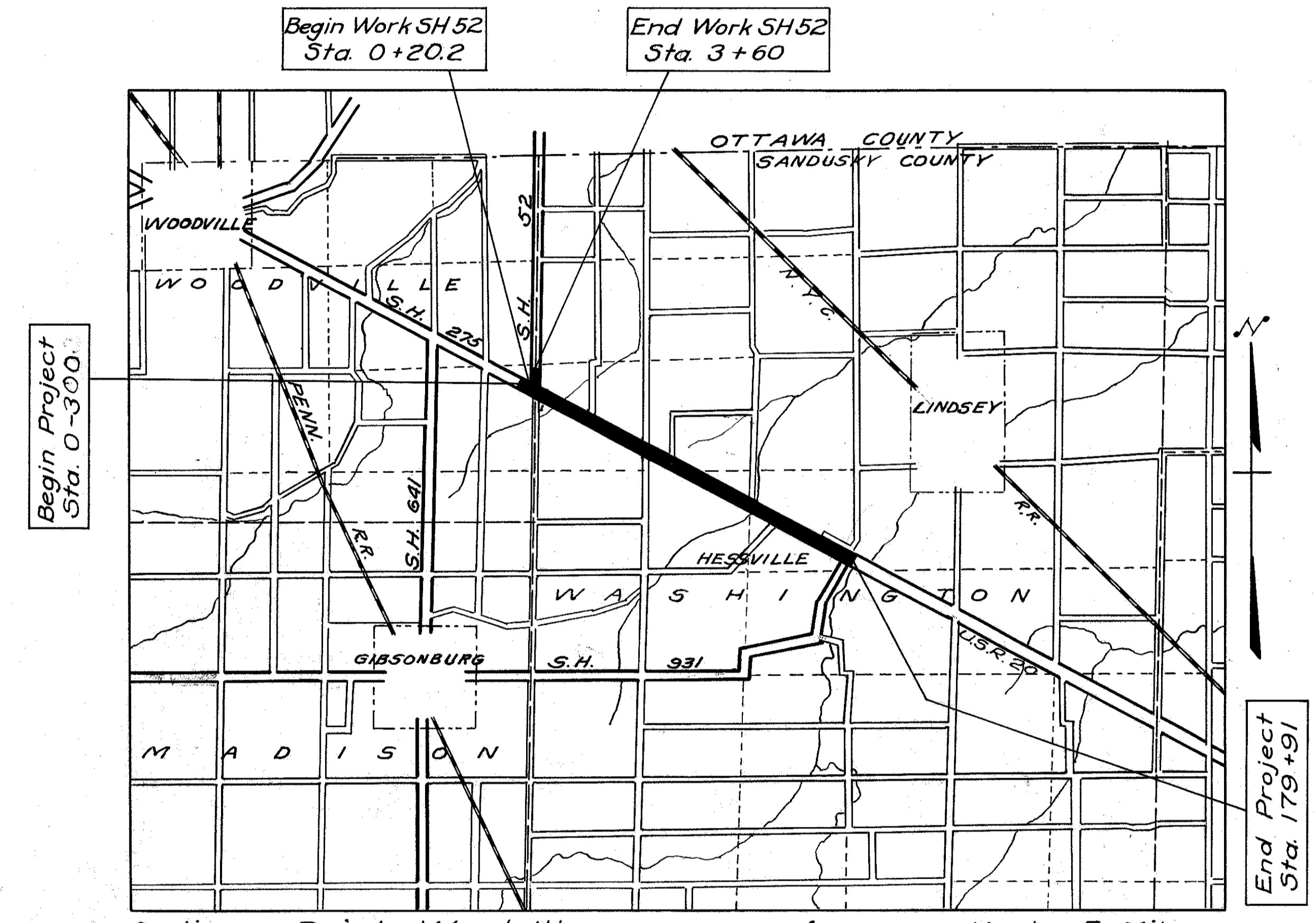
INDEX OF SHEETS

TITLE SHEET	1
TYPICAL SECTIONS & GENERAL NOTES	2
PLAN & PROFILE	3-8
INTERSECTION DETAILS	9-10
GENERAL SUMMARY	11

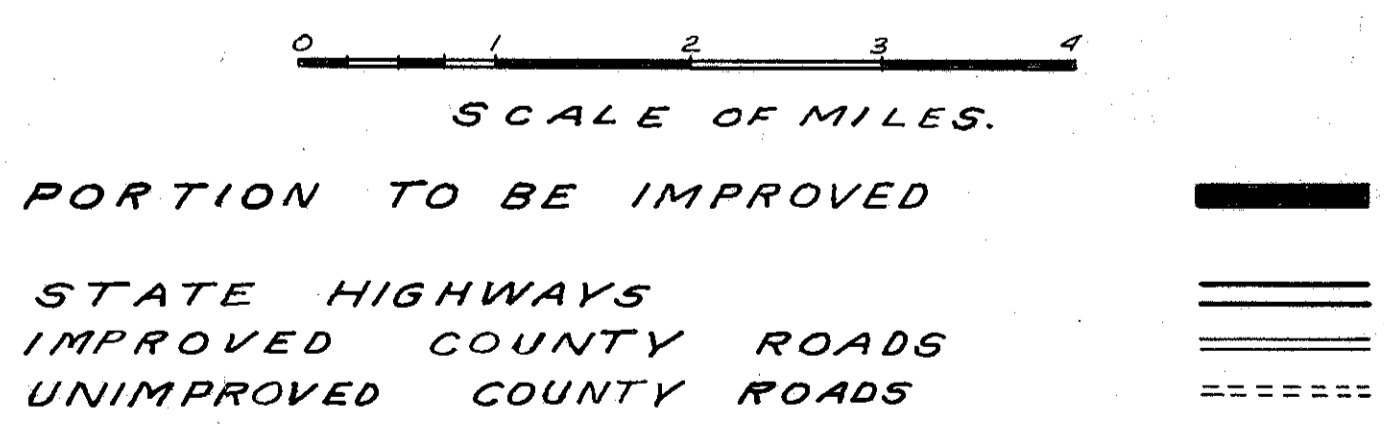
LINE DATA

S. H. 52, SEC. A (Pt.)
Begin Work Sta. 0+20.2
End Work Sta. 3+60
Net Length of work = 3398 Lin. Ft. or 0.064 Miles.

S. H. 275, SEC. L (Pt.)
Begin Project Sta. 0-300.0
End Project Sta. 179+91
Gross Length = Net Length = 18,291 Lin. Ft. or 3.464 Miles.
Net Length of Project = 18,630.8 = 3.528 Mi.



LOCATION PLAN



SCALE S

PLAN 1" = 100'
PROFILE - HORIZONTAL 1" = 100'
PROFILE - VERTICAL 1" = 1'

The Standard Specifications of the State of Ohio Department of Highways including changes and Supplemental Specifications listed in the proposal shall govern this improvement.

I hereby approve these plans and declare that the making of this improvement will not require the closing to traffic of the highway and that provisions for the maintenance and safety of traffic will be as set forth on the plans and estimates.

The right of way necessary for this improvement will be provided by the State of Ohio.

Approved: Arnold V. Finch
Date 4-7-45 Resident Division Deputy Director

Approved: _____
Date _____ Chief Engineer Bureau of Maintenance.

Approved: _____
Date _____ Chief Engineer Bureau of Bridges & R.R. Crossings.

Approved: Marion D. Shaffer
Date 4-19-45 Chief Engineer Bureau of Location and Right of Way.

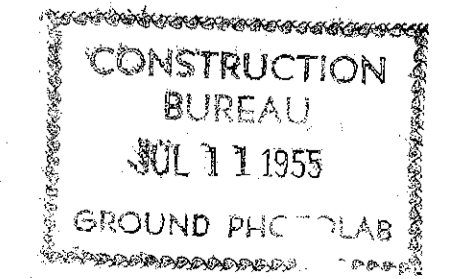
Approved: Oliver W. Ellis
Date 4-20-45 First Asst. Director & Chief Engineer.

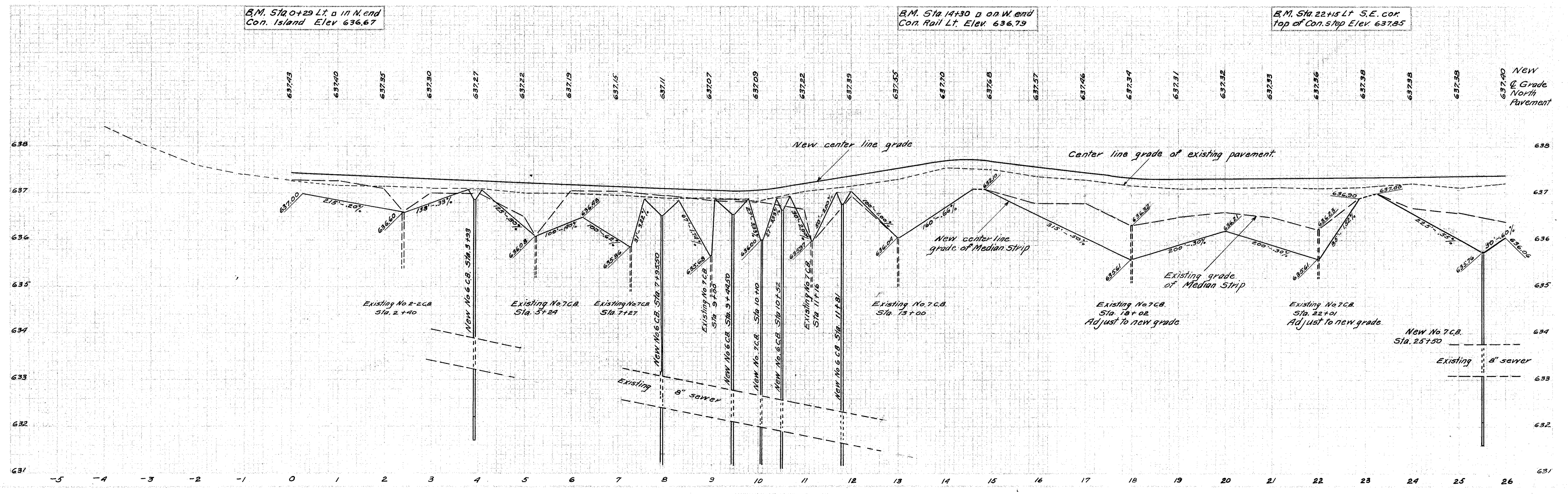
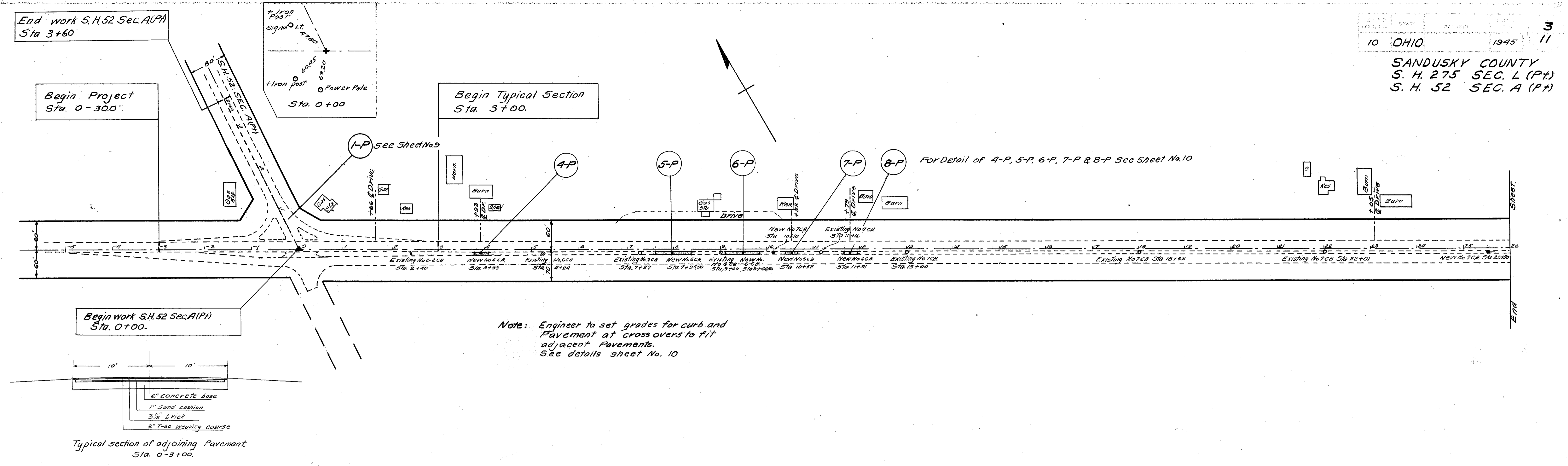
Approved: Perry J. Eades
Date 4-20-45 Director of Highways.

STANDARD DRAWINGS	
G-7.07	6-1-42
I-8 C.B. No. 7	8-1-41
I-8 C.B. No. 6	12-15-41
I-12	7-1-42
I-15 No. 8	3-10-42

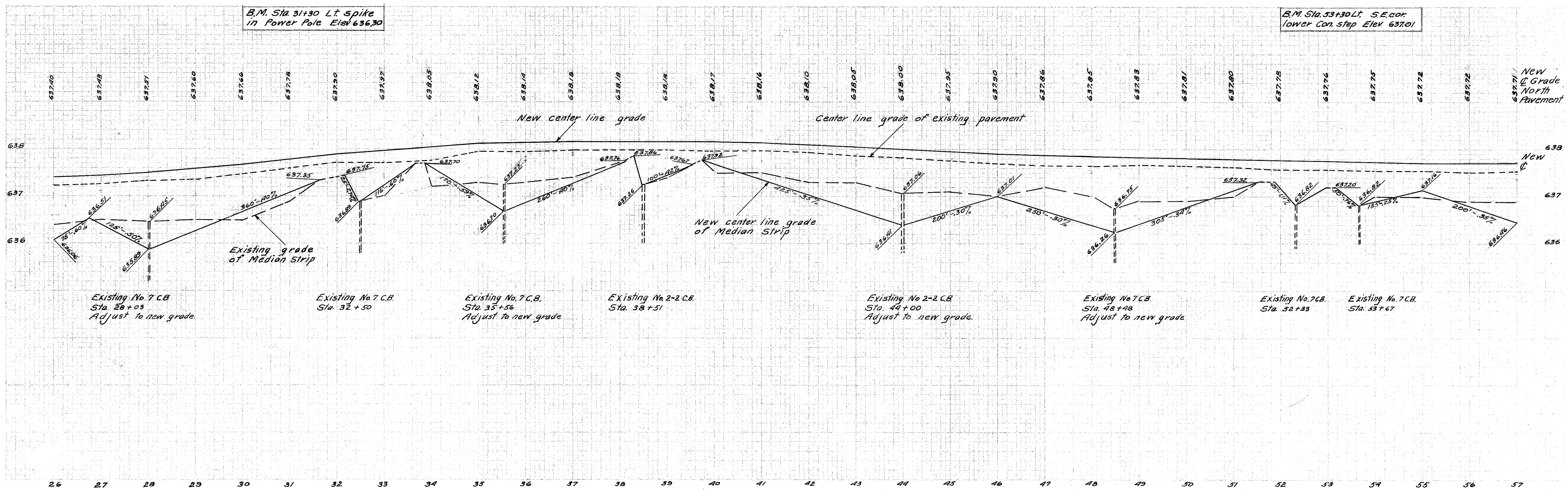
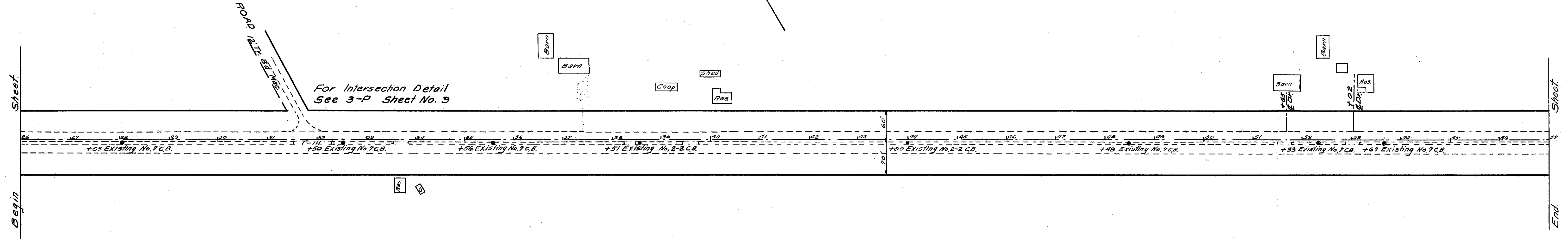
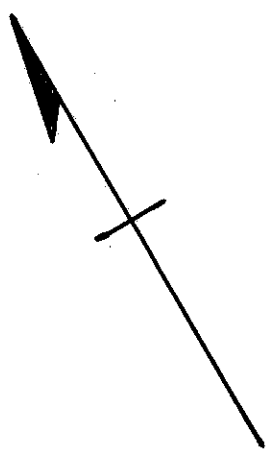
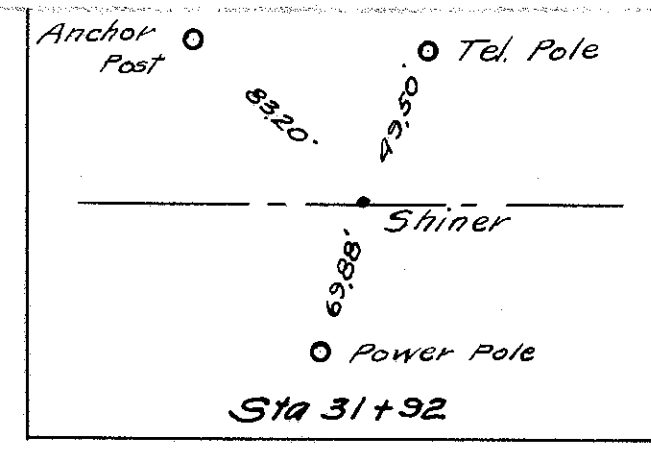
SUPPLEMENTAL SPECIFICATIONS							
I-117	1-15-44	M-102.12	8-2-43	M-109.1	Rev. 3-14-44	M-109.7a	Rev. 3-14-44
E-305	Rev. 5-1-41	T-170.15	8-2-43	M-109.2	Rev. 3-14-44	M-109.7b	Rev. 3-14-44
177	Rev. 4-21-44	178	Rev. 4-21-44	M-109.6a	Rev. 3-14-44	M-109.8	7-26-43
				M-109.6b	Rev. 3-14-44		

FILE	SANDUSKY CO. S. H. 52 SEC. A (Pt.)
N.º	S. H. 275 SEC. L (Pt.)
DATE OF LETTING	----- 19 --
CONTRACT N.º	-----

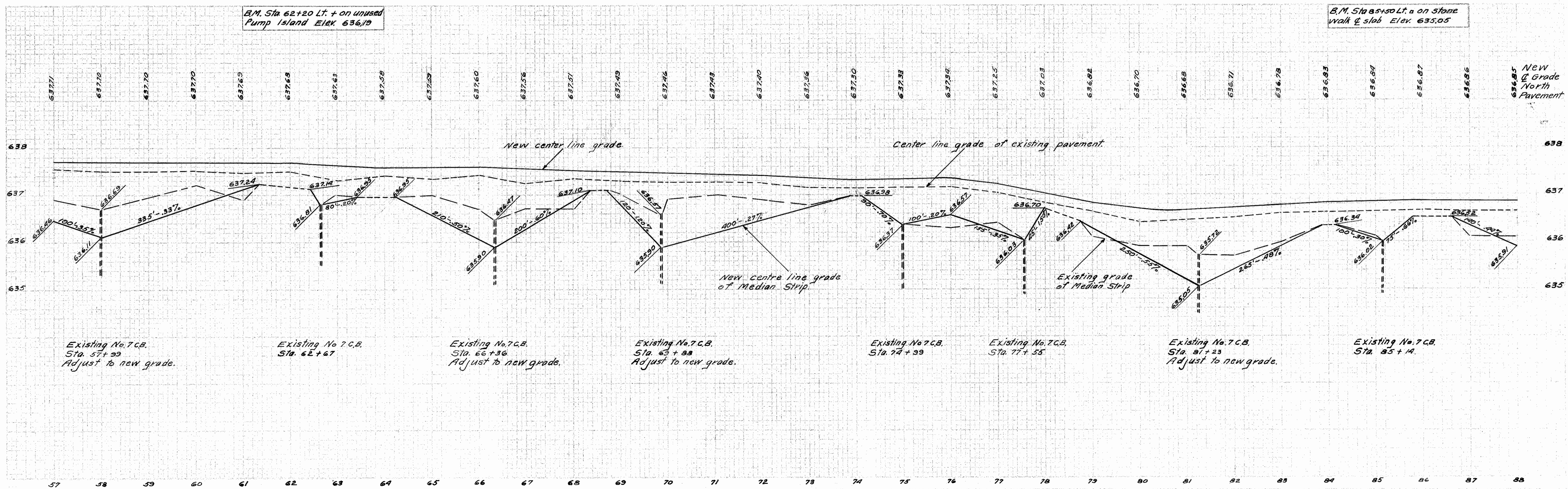
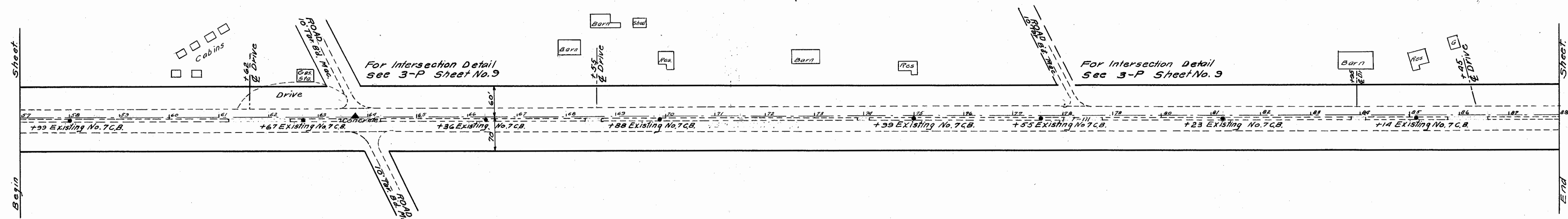
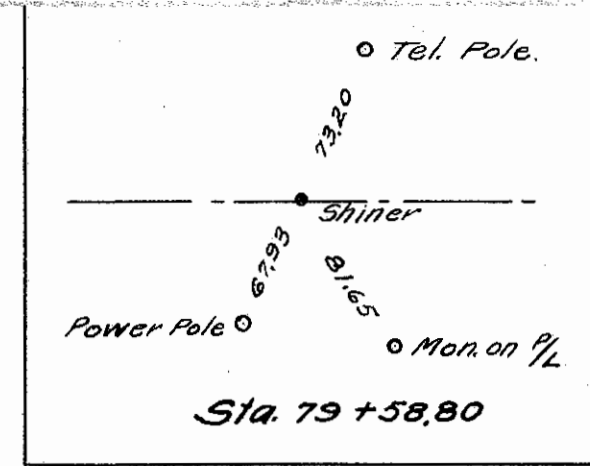
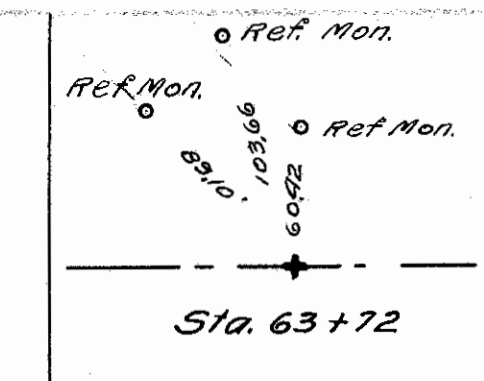




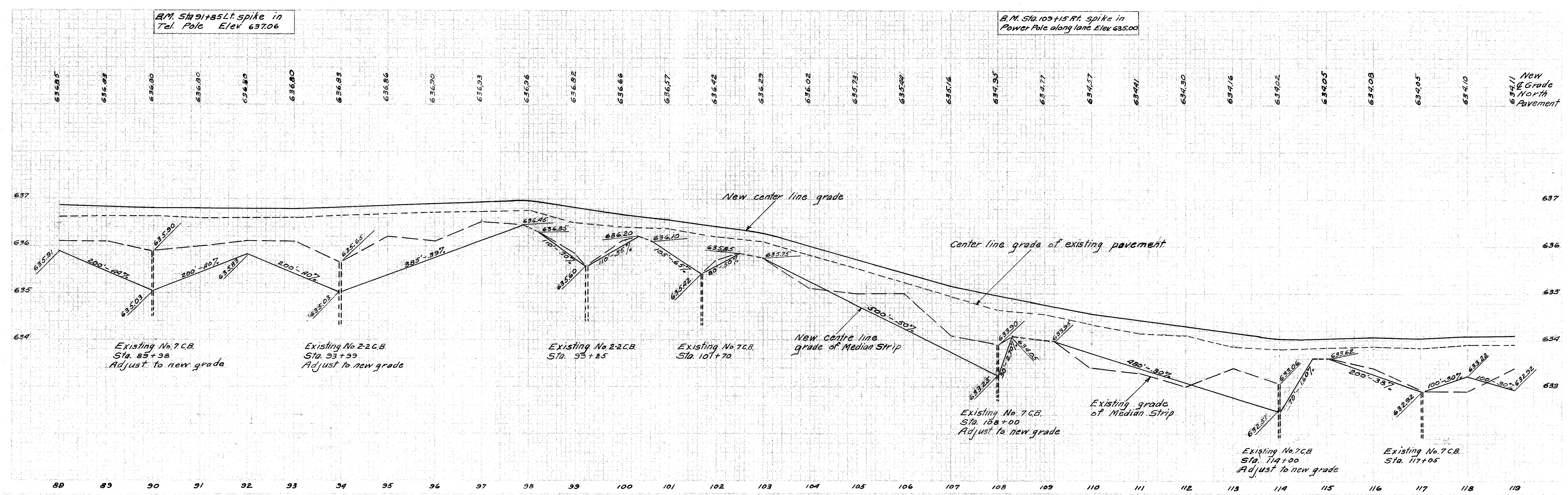
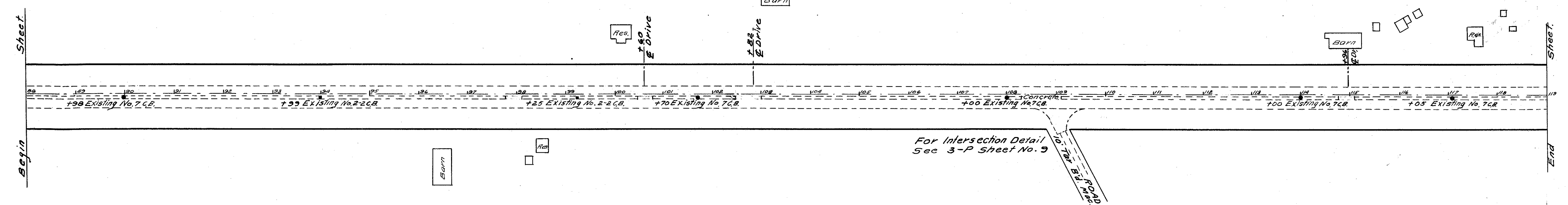
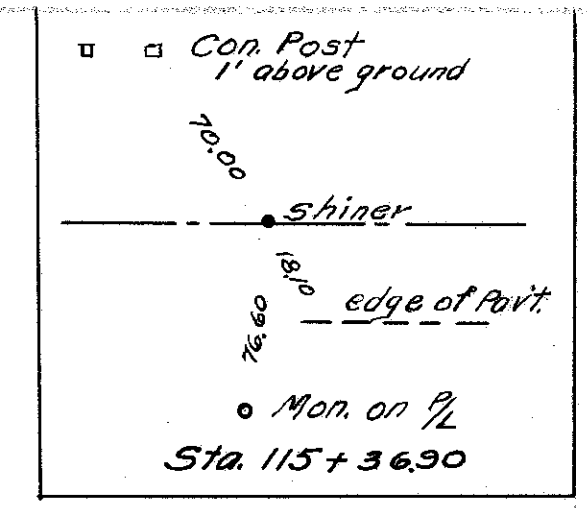
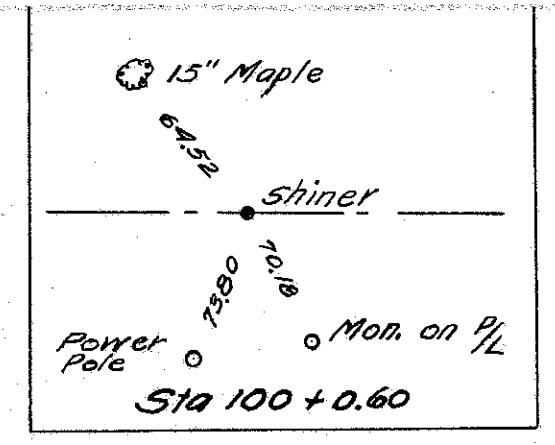
SANDUSKY COUNTY
 S.H. 275 SEC. L (Pt.)
 S.H. 52 SEC. A (Pt.)



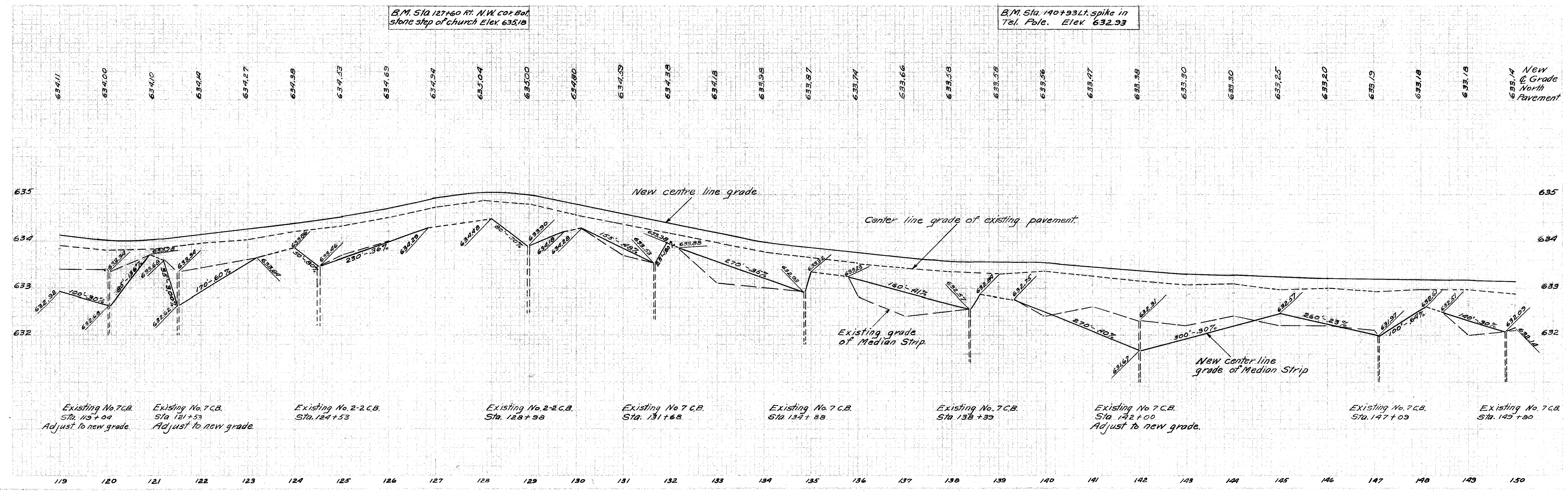
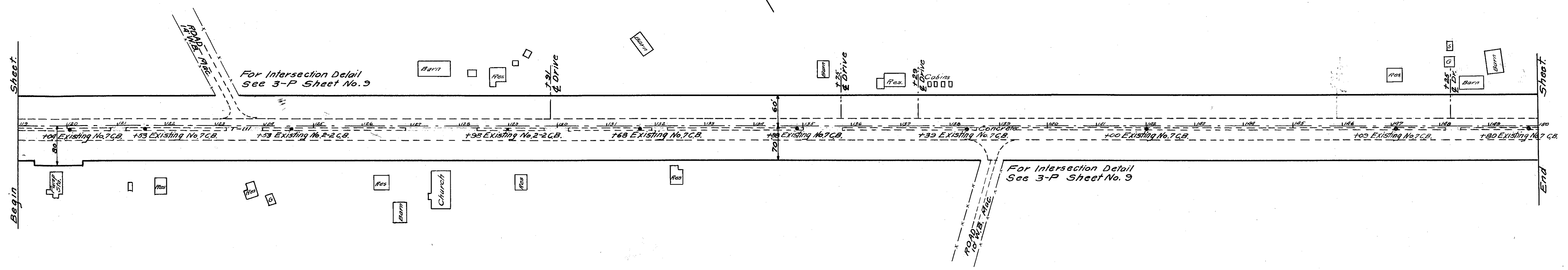
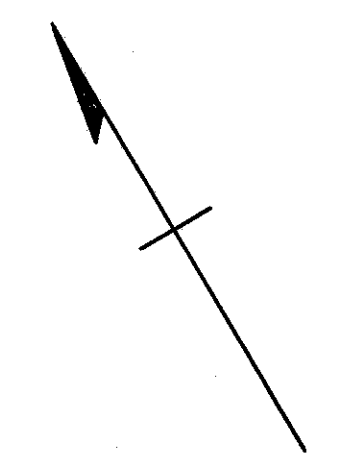
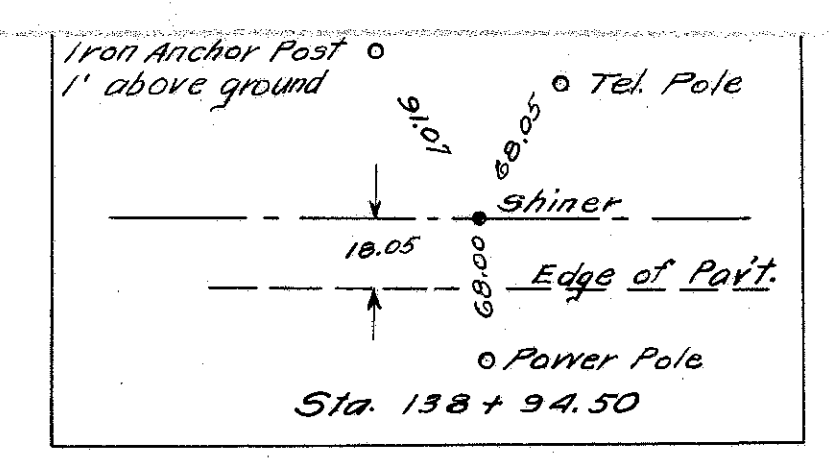
SANDUSKY COUNTY
S.H. 275 SEC. L (PT)
S.H. 52 SEC. A (PT)



SANDUSKY COUNTY
S.H. 275 SEC. L (Pt)
S.H. 52 SEC. A (Pt)

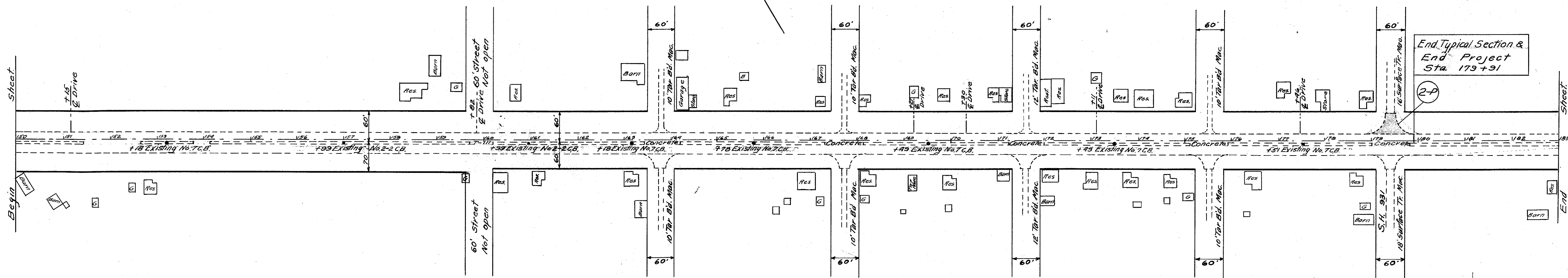


SANDUSKY COUNTY
 S. H. 275 SEC. L (PT)
 S. H. 52 SEC. A (PT)



PLAN NO.	STATE	PROJECT	FISCAL YEAR	8
10	OHIO		1945	11

SANDUSKY COUNTY
S. H. 275 SEC. L (PT)
S. H. 52 SEC. A (PT)



For Intersection Detail at Sta. 163+80, 167+71, 171+62 & 175+52.
See 3-P Sheet No. 9

