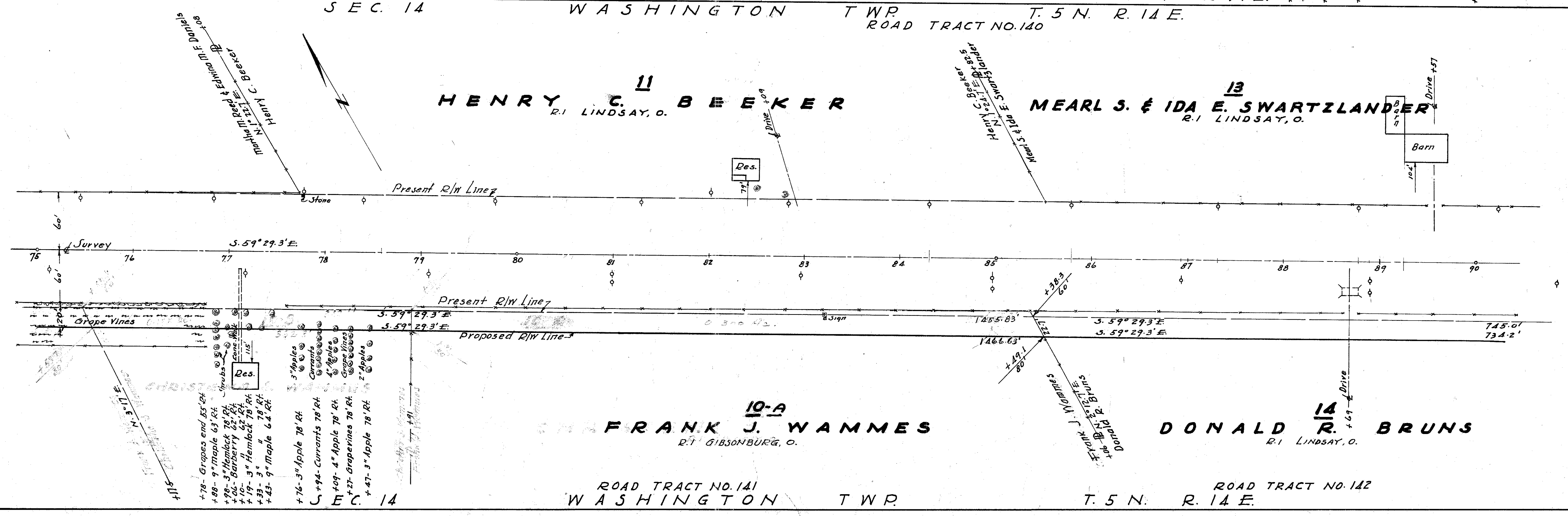
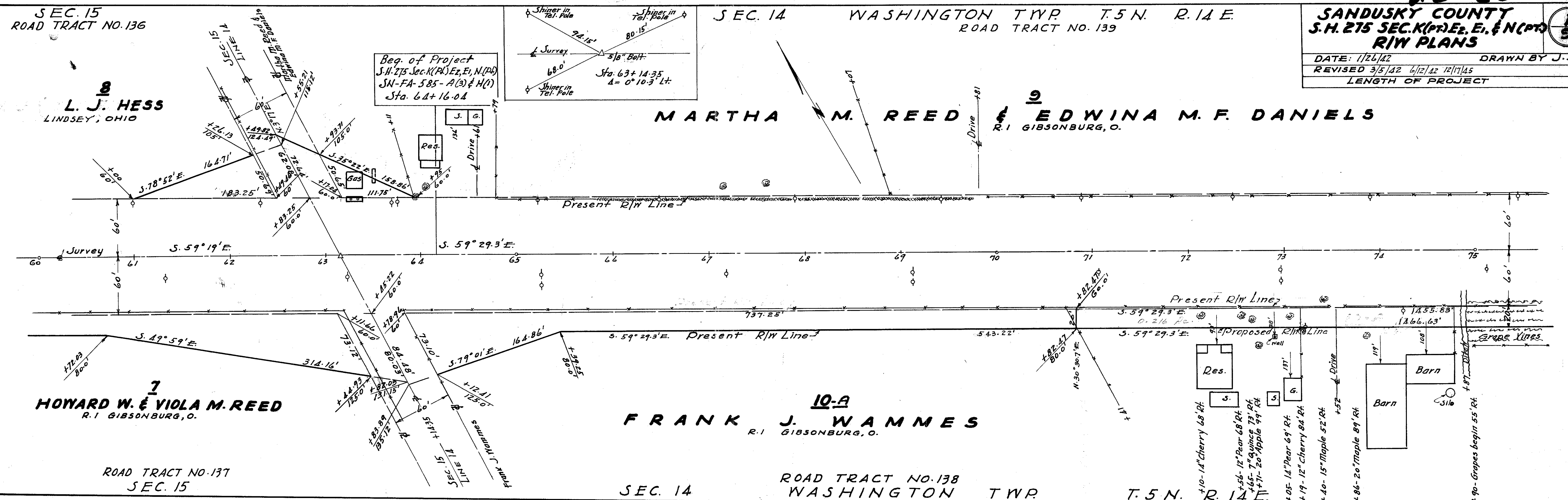


SANDUSKY COUNTY
S.H. 275 SEC. K(P), E, E, & N(P)
R/W PLANS

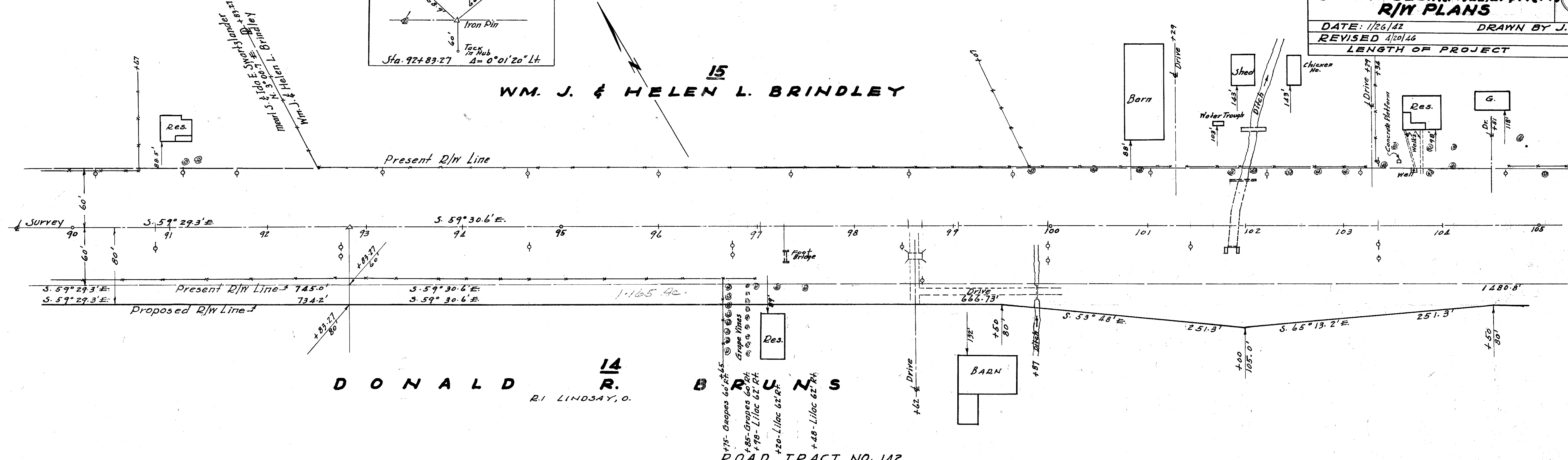
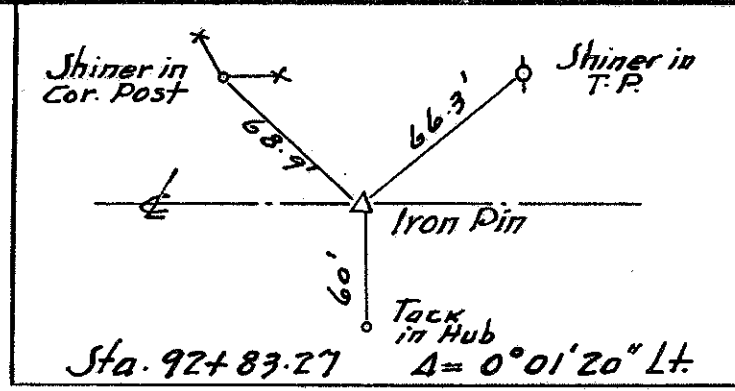
DATE: 1/26/42 DRAWN BY J.S.
 REVISED 3/5/42 6/12/42 12/17/45
 LENGTH OF PROJECT



R5020 #7 F28

SEC. 14 WASHINGTON TWP T. 5 N. R. 14 E.
ROAD TRACT NO. 143

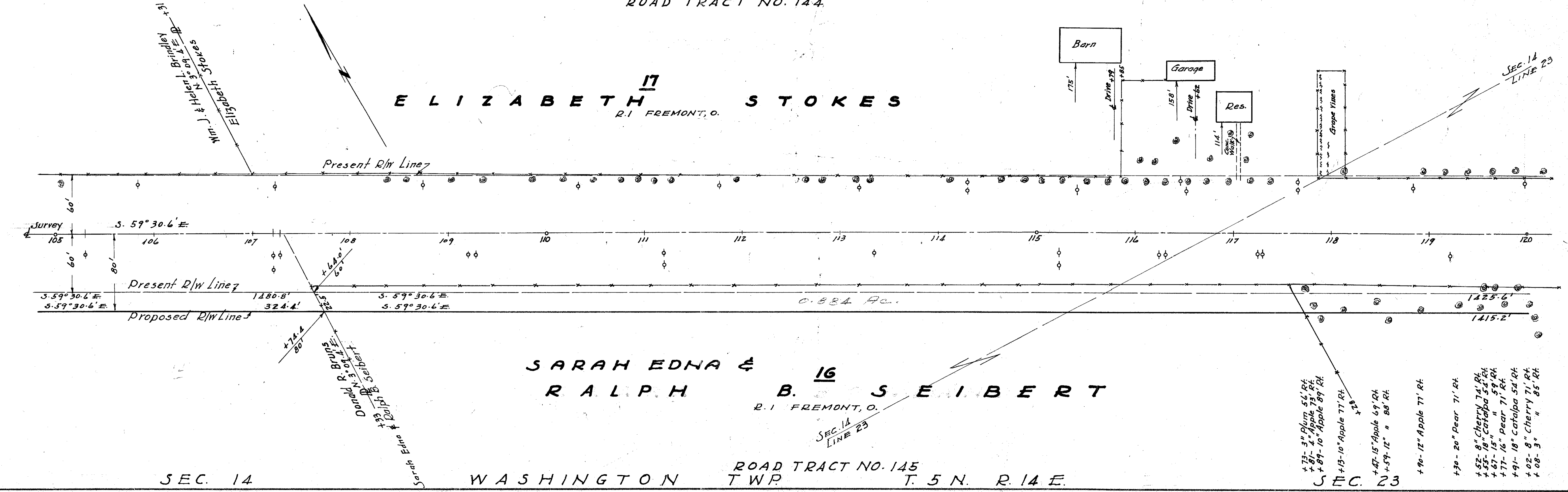
WM. J. & HELEN L. BRINDLEY



DONALD R. BRUNNS
R.I. LINDSAY, O.

SEC. 14 WASHINGTON TWP T. 5 N. R. 14 E.
ROAD TRACT NO. 142

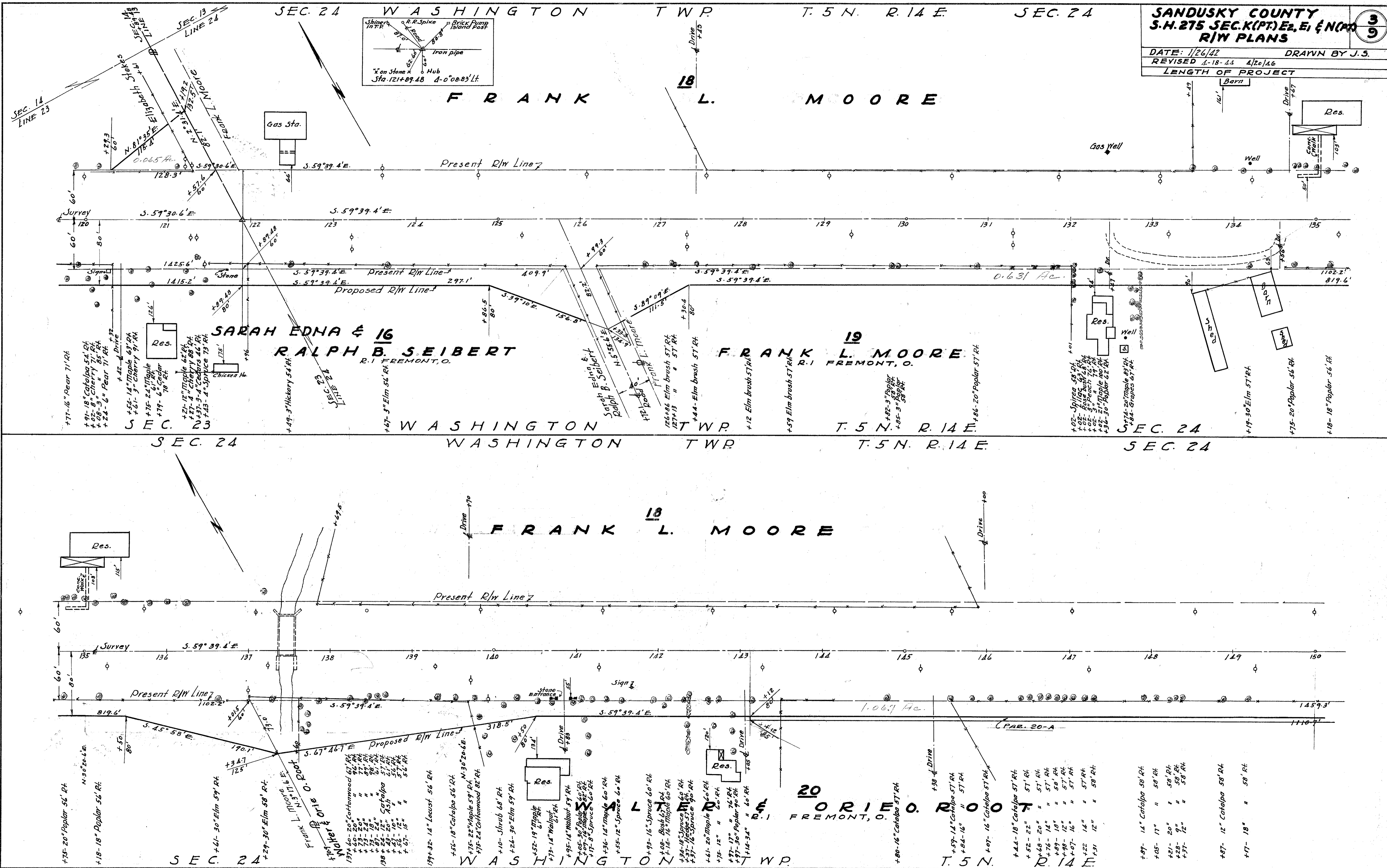
ELIZABETH STOKES
R.I. FREMONT, O.



SARAH EDNA & RALPH B. SEIBERT
R.I. FREMONT, O.

SEC. 14 WASHINGTON TWP T. 5 N. R. 14 E.
ROAD TRACT NO. 145

- +73- 3" Plum 56' Rt.
- +81- 2" Apple 73' Rt.
- +89- 10" Apple 89' Rt.
- +93- 10" Apple 77' Rt.
- +47- 15" Apple 69' Rt.
- +59- 12" " 86' Rt.
- +90- 12" Apple 71' Rt.
- +30- 20" Pear 71' Rt.
- +52- 8" Cherry 74' Rt.
- +57- 18" Catalpa 54' Rt.
- +67- 15" " 59' Rt.
- +77- 16" Pear 71' Rt.
- +91- 18" Catalpa 54' Rt.
- +02- 8" Cherry 71' Rt.
- +08- 3" " 85' Rt.



SEC. 24

WASHINGTON TWP.

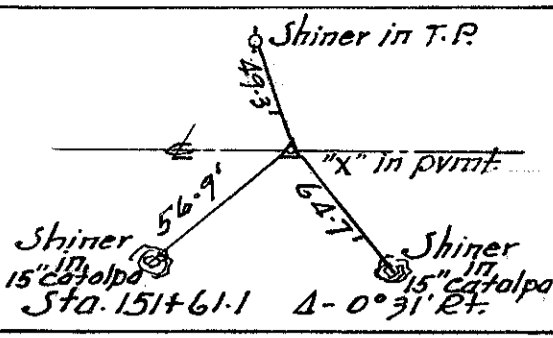
T. 5 N.

R. 14 E.

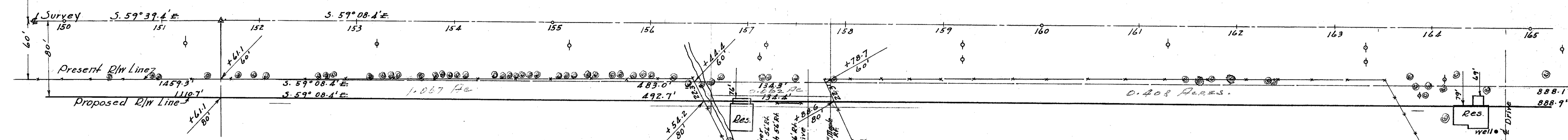
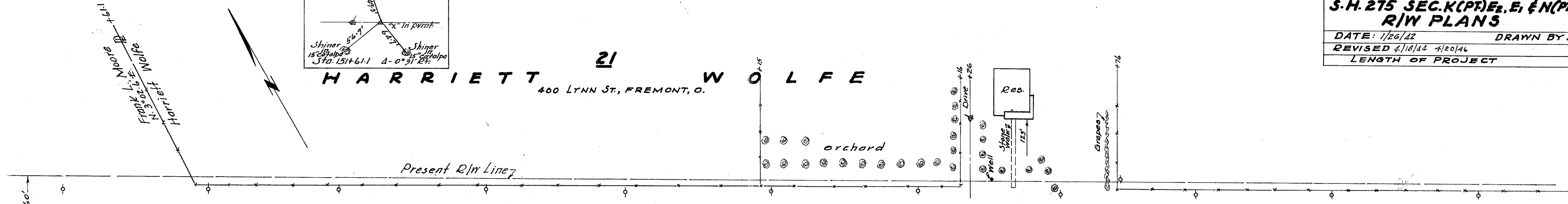
SANDUSKY COUNTY
S.H. 215 SEC. K (PT) E2, E1 & N (PT)
R/W PLANS

4
9

DATE: 1/26/12 DRAWN BY J.S.
REVISED 4/18/14 4/20/14
LENGTH OF PROJECT



HARRIETT WOLFE
400 LYNN ST., FREMONT, O.



WALTER E. WALTER
FREMONT, O.

ORIE O. ROOT
FREMONT, O.

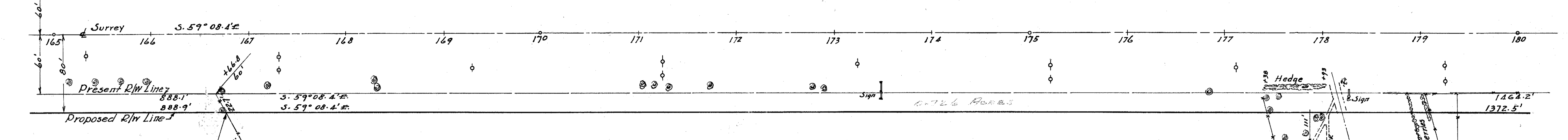
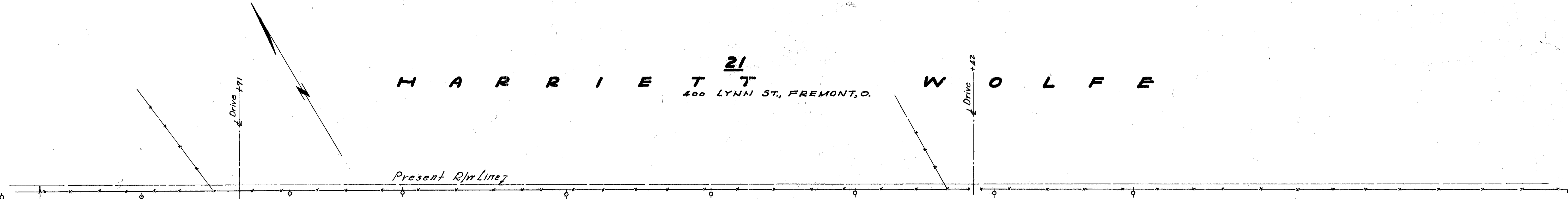
NELLIE BOLEH ARNHOLT
R.1 FREMONT, O.

ROSS W. SMITH
R.1 FREMONT, O.

- +15-20" Catalpa 58' Rt.
- +99-18" " 57' Rt.
- +98-14" " 58' Rt.
- +46-19" Catalpa 57' Rt.
- +79-14" " 57' Rt.
- +94-20" " 58' Rt.
- +07-14" " 57' Rt.
- +16-19" Catalpa 57' Rt.
- +77-13" " 57' Rt.
- +18-15" Catalpa 57' Rt.
- +29-16" " 56' Rt.
- +35-9" " 56' Rt.
- +43-12" " 56' Rt.
- +67-14" " 56' Rt.
- +82-8" Catalpa 54' Rt.
- +89-14" " 54' Rt.
- +96-17" " 55' Rt.
- +72-18" " 55' Rt.
- +80-17" " 55' Rt.
- +87-16" " 55' Rt.
- +10-16" " 55' Rt.
- +17-10" " 55' Rt.
- +25-17" " 56' Rt.
- +49-12" " 54' Rt.
- +45-18" " 54' Rt.
- +63-14" " 55' Rt.
- +72-20" " 54' Rt.
- +87-12" " 55' Rt.
- +93-15" " 55' Rt.
- +27-13" Catalpa 55' Rt.
- +37-Thorn Bush 56' Rt.
- +55-11" Plum 63' Rt.
- +57-20" Apple 40' Rt.
- +74-Shrub 56' Rt. O. Root
- +116-6" " 57' Rt.
- +118-6" " 57' Rt.
- +125-11" Ash 58' Rt.
- +52-1" Ash 54' Rt.
- +65-4" Drive
- +90-57' Rt.
- +165-4" Drive
- +183-3' " 57' Rt.
- +182-2' " 57' Rt.
- +79-4' " 57' Rt.
- +47-7" Ash 54' Rt.
- +35-10' 4' 6" Ash 55' Rt.
- +94-2-5" Ash 54' Rt.
- +78-3" Maple 55' Rt.
- +86-Bush 62' Rt.
- +98-1" Cherry 70' Rt.
- +98-7" Blum 60' Rt.
- +12-16" Cedar 64' Rt.
- +14-17" Ripping 75' Rt.
- +28-3" Box Elder 49' Rt.
- +57-18" Spruce 63' Rt.
- +16-3" Box Elder 49' Rt.

SEC. 24
WASHINGTON TWP.
T. 5 N. R. 14 E.

HARRIETT WOLFE
400 LYNN ST., FREMONT, O.



WAYNE A. ROOT
R.1 FREMONT, O.

GRACE B. ROOT
R.1 FREMONT, O.

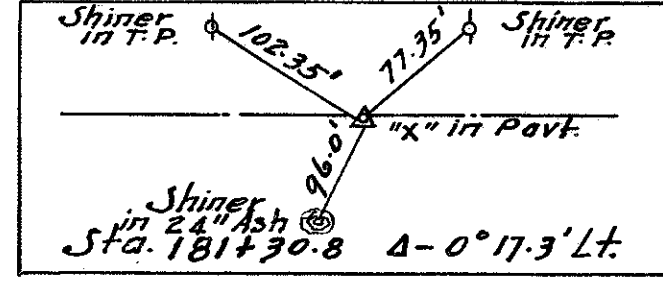
- +16-3" Box Elder 49' Rt.
- +44-3" " 49' Rt.
- +70-3" " 49' Rt.
- +96-3" " 49' Rt.
- +71-3" Elm 59' Rt.
- +74-6" Elm 77' Rt.
- +34-6" Elm 59' Rt.
- +32-4" Elm 59' Rt.
- +30-4" Twin Elm 52' Rt.
- +83-3" Elm 52' Rt.
- +18- " 53' Rt.
- +31-5" " 53' Rt.
- +72-5" Twin Elm 53' Rt.
- +76-5" Elm 54' Rt.
- +89-Box Elder Brush 53' Rt.
- +84-12" Cherry 59' Rt.
- +37-8" Maple 63' Rt.
- +40-2" Plum 76' Rt.
- +59-Shrub 62' Rt.
- +93-20" Pine 87' Rt.
- +97-26" " 87' Rt.
- +22-Shrub 57' Rt.

SEC. 24

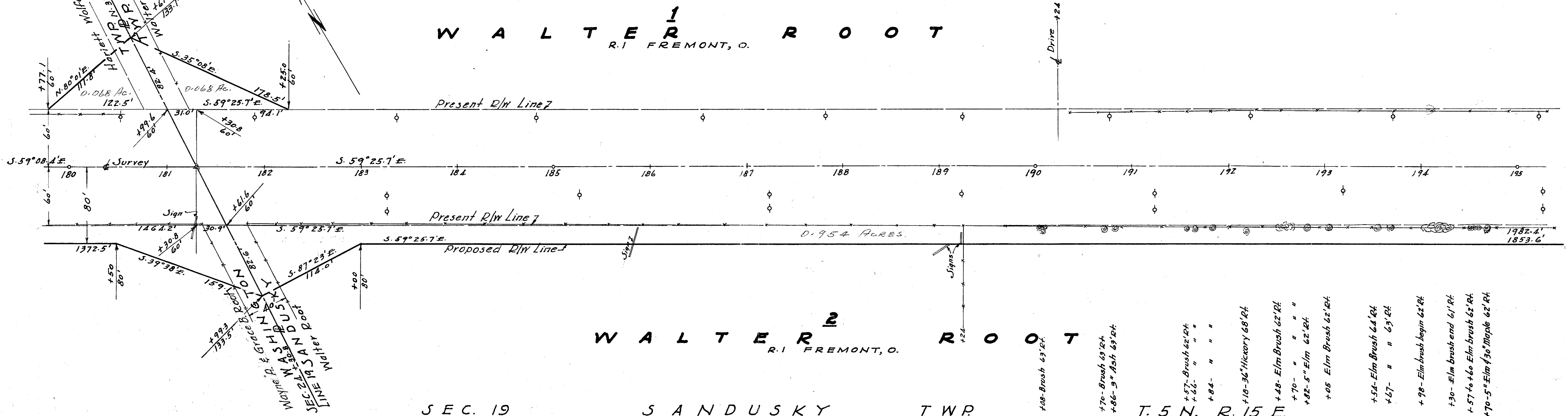
WASHINGTON TWP.

T. 5 N.

R. 14 E.



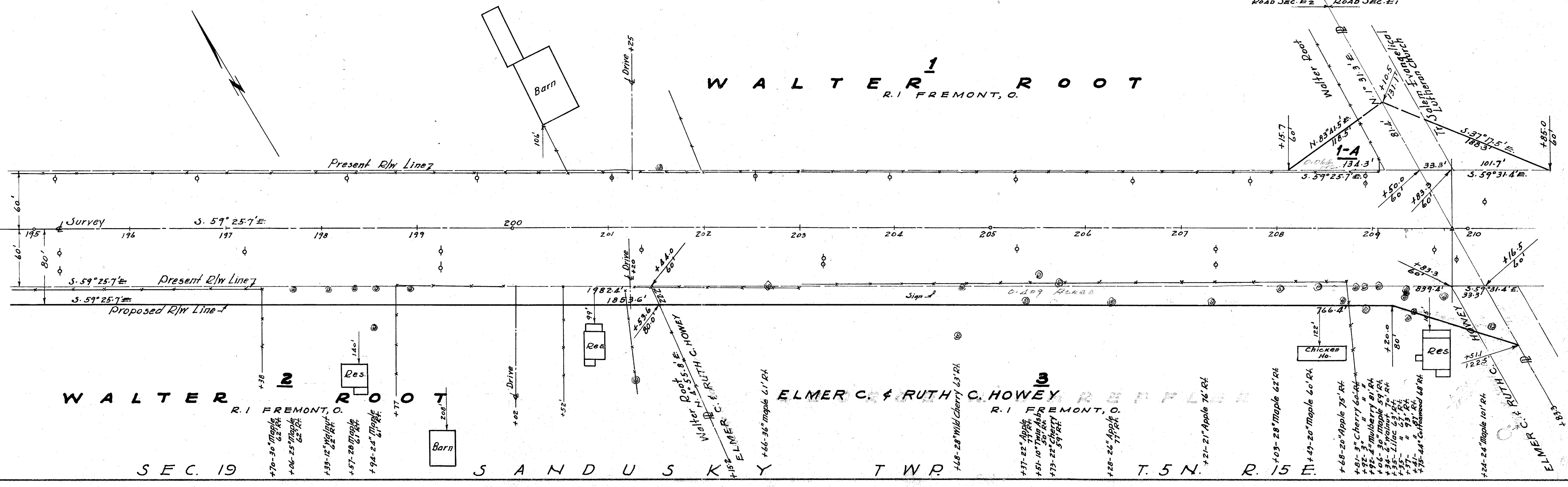
WALTER¹ ROOT R.I. FREMONT, O.



WALTER² ROOT R.I. FREMONT, O.

- +48-Brush 43' Rt.
- +70-Brush 43' Rt.
- +86-9" Ash 43' Rt.
- +57-Brush 62' Rt.
- +66- " " "
- +84- " " "
- +18-36" Hickory 68' Rt.
- +48- Elm Brush 62' Rt.
- +70- " " "
- +82-5" Elm 62' Rt.
- +05 Elm Brush 62' Rt.
- +54- Elm Brush 64' Rt.
- +67- " " 65' Rt.
- +98- Elm brush begin 62' Rt.
- +30- Elm brush end 61' Rt.
- +57- to +60 Elm brush 62' Rt.
- +70-5" Elm 43' Maple 62' Rt.

WALTER¹ ROOT R.I. FREMONT, O.



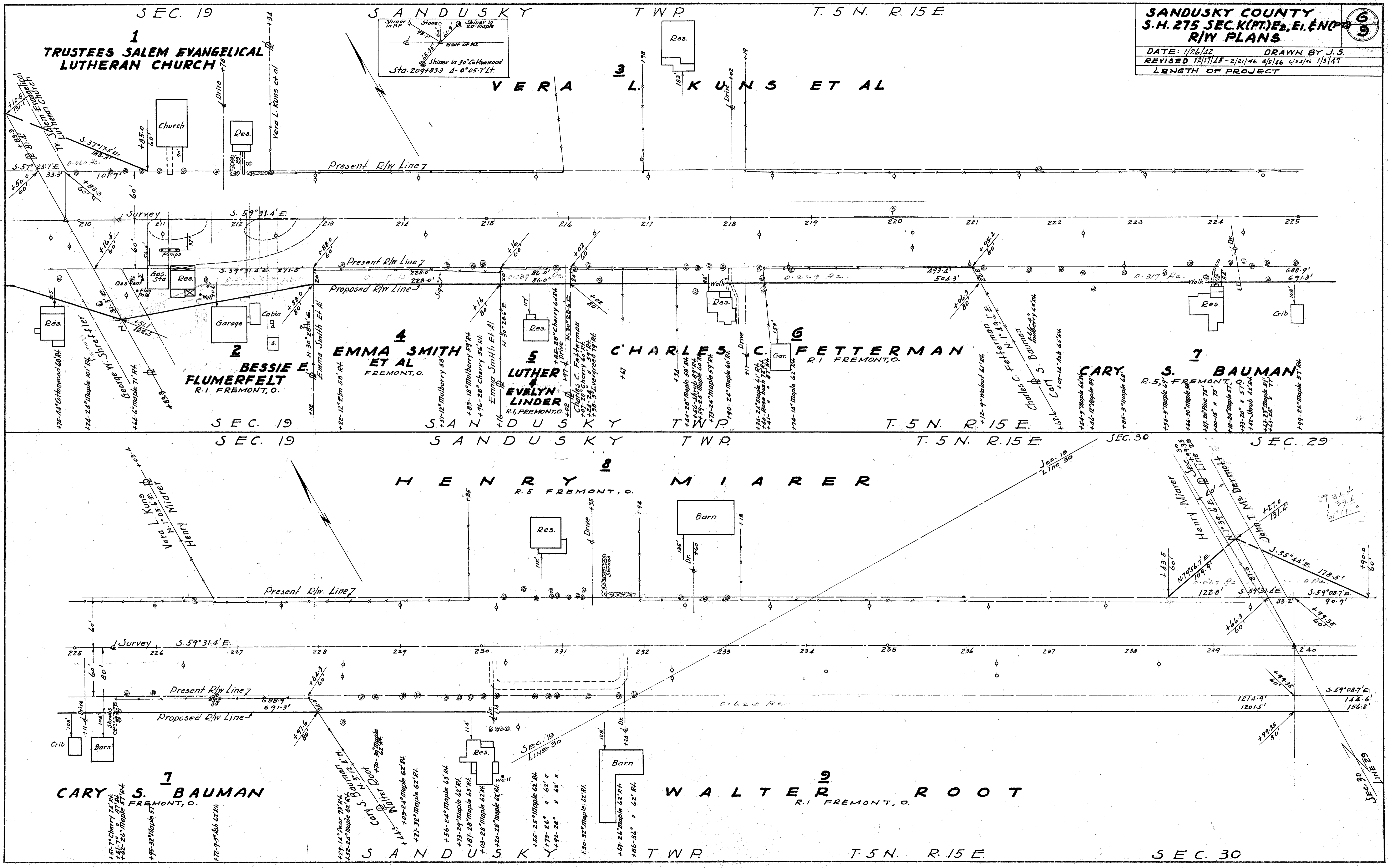
WALTER² ROOT R.I. FREMONT, O.

ELMER C. & RUTH C. HOWEY R.I. FREMONT, O.

- +70-30" Maple 62' Rt.
- +06-25" Maple 62' Rt.
- +33-12" Maple 61' Rt.
- +57-20" Maple 61' Rt.
- +94-24" Maple 61' Rt.
- +15-30" Maple 61' Rt.
- +66-36" Maple 61' Rt.
- +68-28" Wild Cherry 63' Rt.
- +81-22" Apple 74' Rt.
- +81-10" Wild Cherry 63' Rt.
- +73-22" Cherry 54' Rt.
- +28-26" Apple 77' Rt.
- +21-21" Apple 76' Rt.
- +03-28" Maple 62' Rt.
- +43-20" Maple 60' Rt.
- +68-20" Apple 75' Rt.
- +92-3" Cherry 60' Rt.
- +92-3" Mulberry 61' Rt.
- +06-30" Maple 59' Rt.
- +45-11" Maple 62' Rt.
- +55- " " 62' Rt.
- +97- " " 62' Rt.
- +75-44" Hawthorn 68' Rt.
- +24-24" Maple 101' Rt.

SANDUSKY COUNTY
S.H. 275 SEC. K(PT) E2, E1, E(N) P1
R/W PLANS

DATE: 1/26/12 DRAWN BY J.S.
 REVISED 12/17/15 - 2/21/16 4/5/16 4/23/16 1/3/17
 LENGTH OF PROJECT

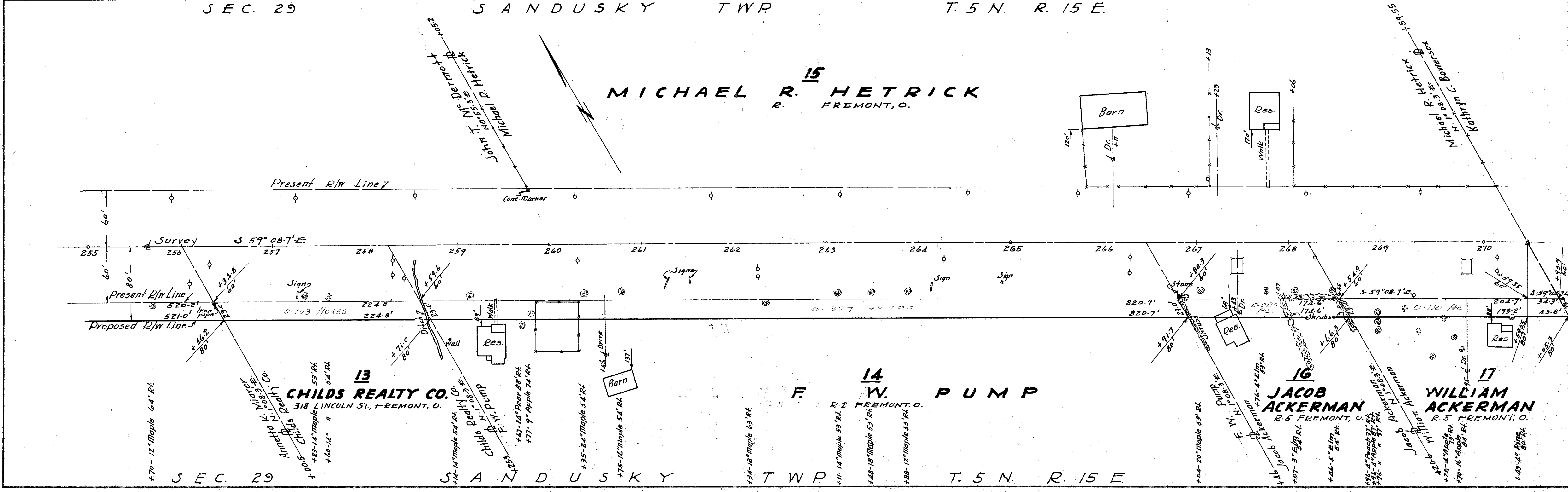
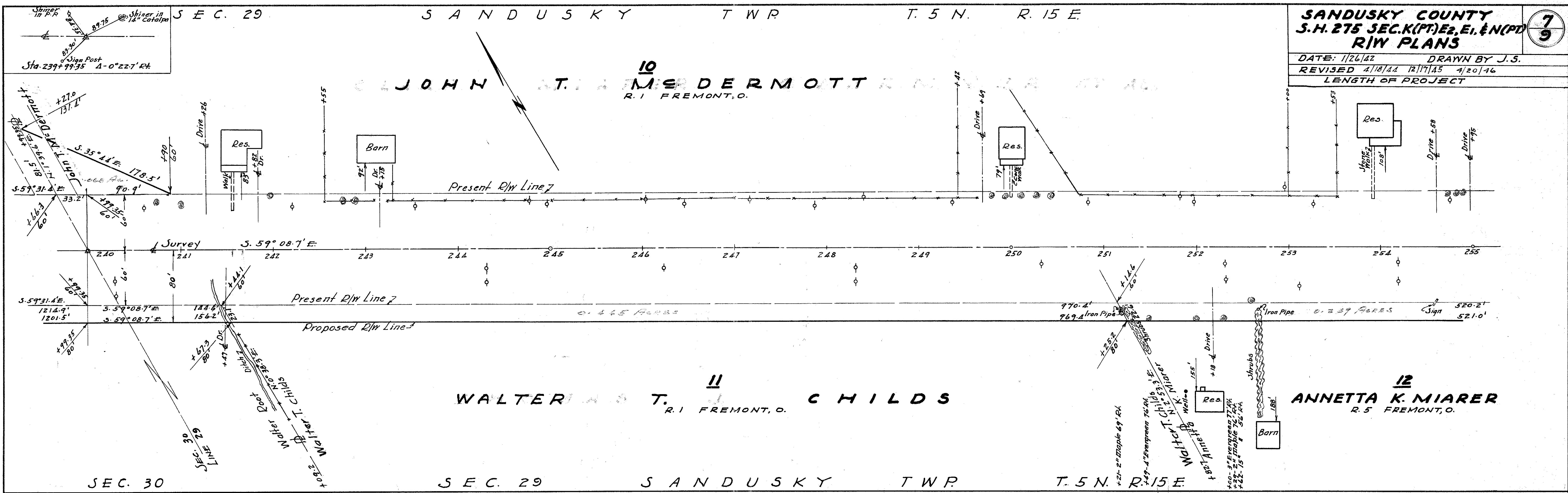


SANDUSKY COUNTY
S.H. 275 SEC. K (PT) E2, E1, E(N) (PT)
R/W PLANS

DATE: 1/26/42 DRAWN BY J.S.
 REVISED 4/18/44 12/17/45 4/20/46

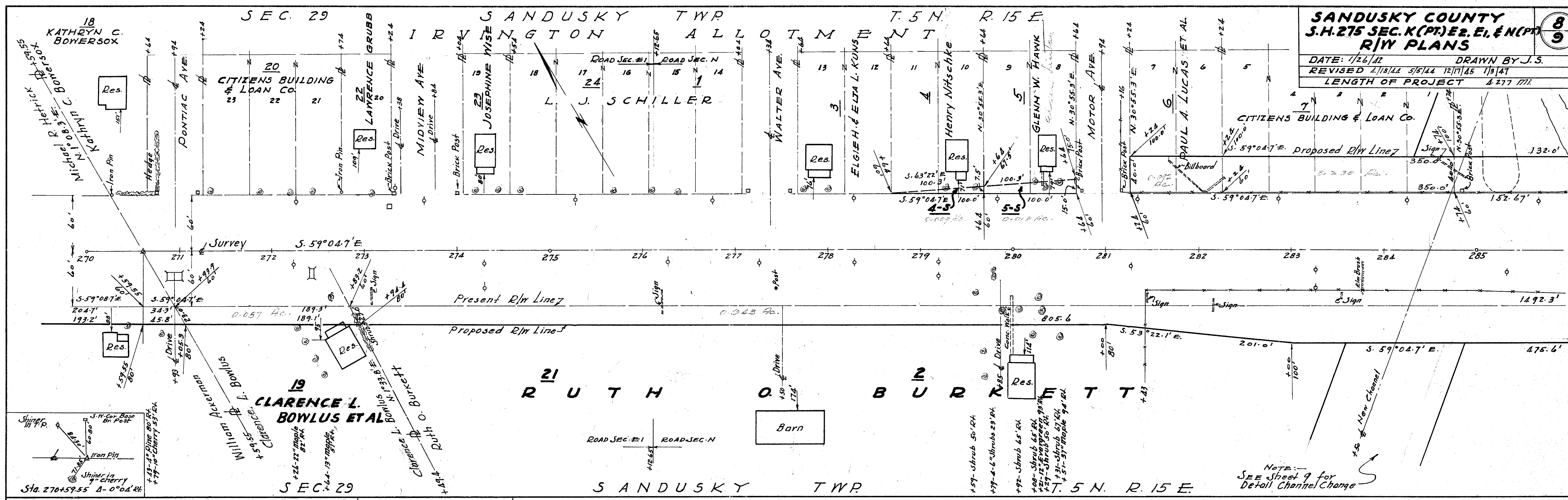
LENGTH OF PROJECT

79

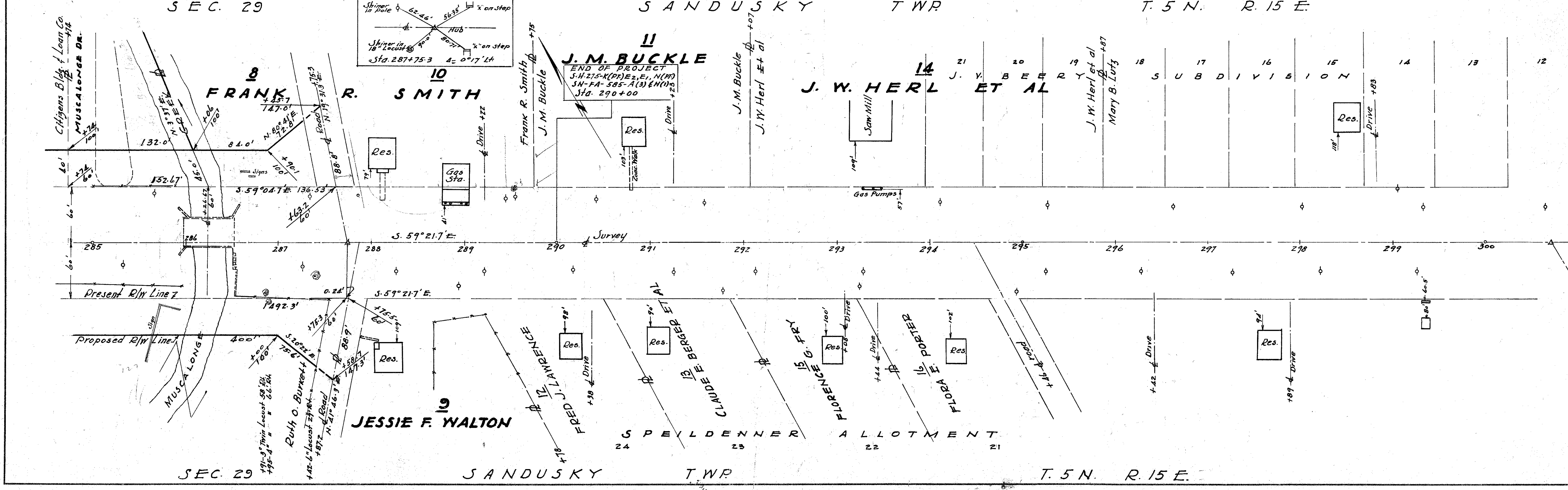


SANDUSKY COUNTY
S.H. 275 SEC. K (PT) E2, E1, & N (PT)
R/W PLANS

DATE: 7/26/12 DRAWN BY: J.S.
 REVISED 2/18/14 5/5/14 12/17/15 7/3/17
 LENGTH OF PROJECT 1.277 MI.



NOTE: See Sheet 9 for Detail Channel Change



J.M. BUCKLE
 END OF PROJECT
 S.H. 275-K (PT) E2, E1, N (PT)
 S.N. FA-585-A(3) E.H. (10)
 STA. 290+00

RUTH O. BURKETT

CITIZENS BLDG. & LOAN CO.

FRANK R. SMITH

