

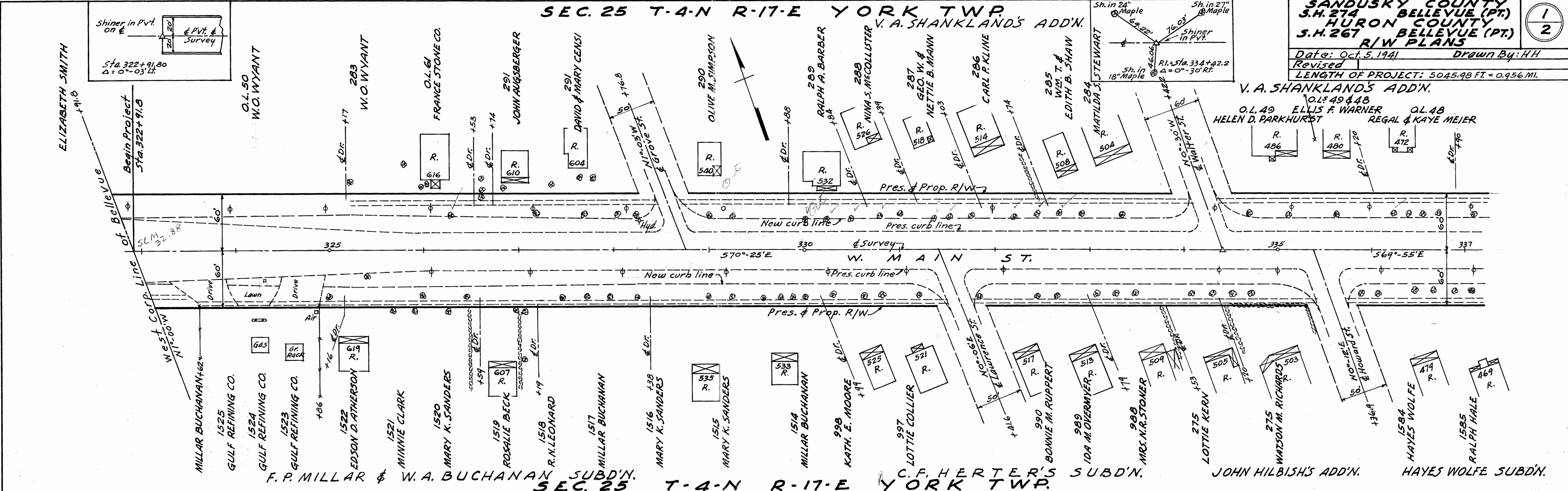
SEC. 25 T-4-N R-17-E YORK TWP.

SANDUSKY COUNTY BELLEVUE (PT.)
S.H. 274 HURON COUNTY BELLEVUE (PT.)
S.H. 267 R/W PLANS

Date: Oct. 5, 1941
 Revised
 Length of Project: 5045.98 FT. = 0.956 MI.

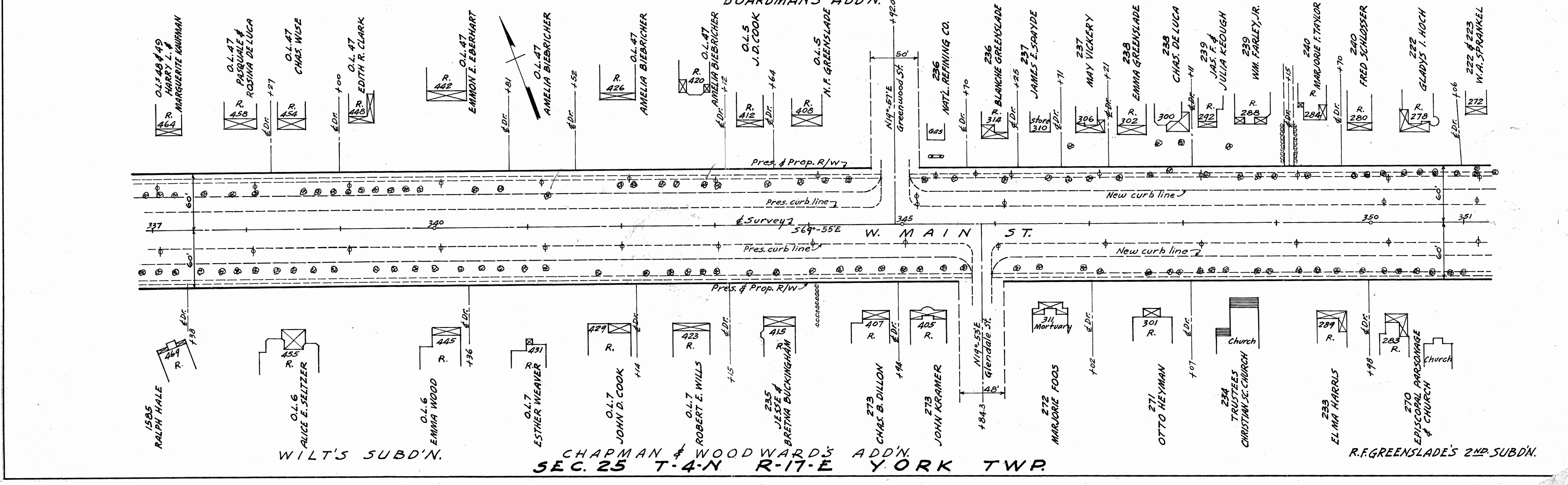
Drawn By: H.H.

1
2



SEC. 25 T-4-N R-17-E YORK TWP.

SEC. 25 T-4-N R-17-E YORK TWP.



SEC. 25 T-4-N R-17-E YORK TWP.

Scanned July 1942

R50204 45 F-7

FOR ANY QUESTIONS PLEASE CONTACT ODOT DISTRICT 2 REAL ESTATE AT 419-353-8131

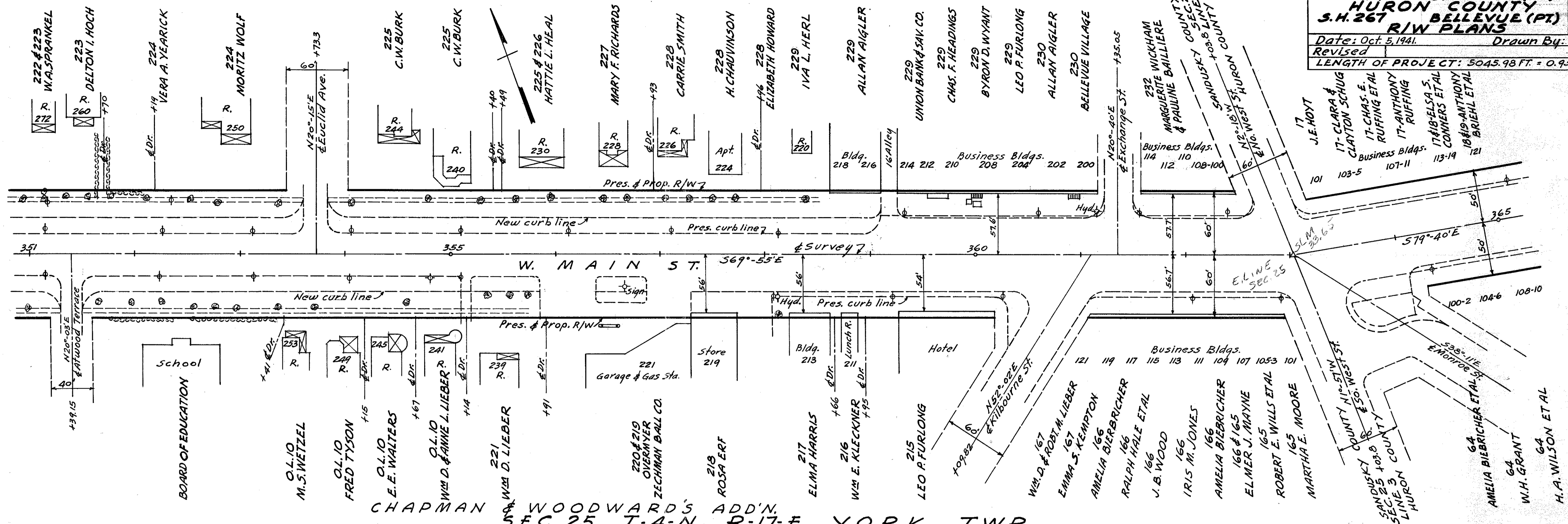
SEC. 25 T-4-N R-17-E YORK TWP.

SANDUSKY COUNTY BELLEVUE (PT)
S.H. 274
HURON COUNTY BELLEVUE (PT)
S.H. 267
R/W PLANS

2
2

Revised: Oct. 5, 1941. Drawn By: H.H.

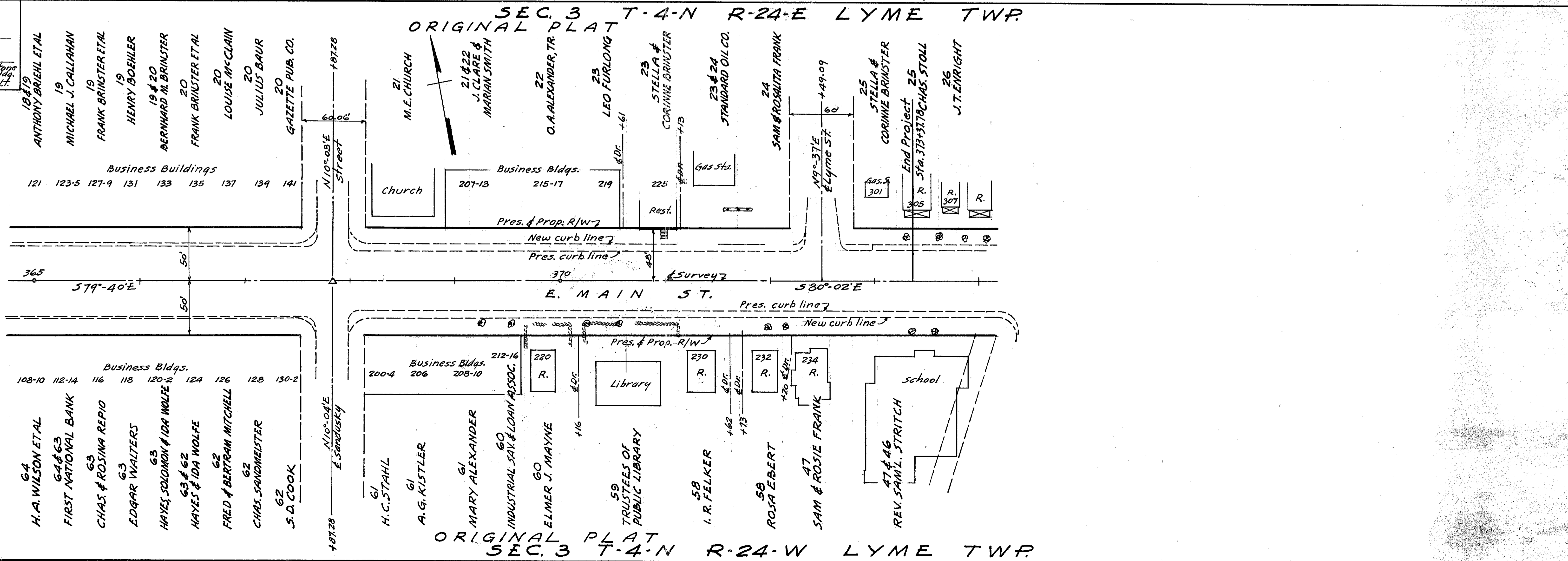
LENGTH OF PROJECT: 5045.98 FT. = 0.956 MI.



SEC. 25 T-4-N R-17-E YORK TWP.

SEC. 3 T-4-N R-24-E LYME TWP.

ORIGINAL PLAT



SEC. 3 T-4-N R-24-W LYME TWP.

ORIGINAL PLAT

Stamped July 1941

24-514 Rec. Bellevue (PT)

F-