

O.D.O.T. DISTRICT 2 SURVEY OFFICE (USE ONLY)

PERSONNEL

REFERENCE NO. 1

SHEET 1 OF 20

NOTES LOEHRKE

DATE 5/2/96

ROUTE US 20

H.C. ROUSOS

WEATHER FAIR, WINDY

COUNTY SANDUSKY

R.C. CANTERBURY

TEMP. 50°F

TOWNSHIP WOODVILLE

DWG BY AUBLE PID \_\_\_\_\_

SECTION 19

T 6 N R 13 E

TYPE MONUMENT SM.R.R.SPIKE

ON SURFACE - ~~BELOW~~ ON

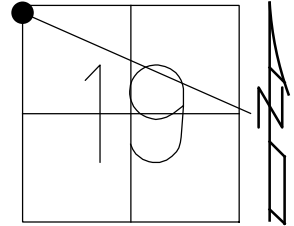
OFFSET ☉ PAVEMENT 12.7' LT : ~~RT~~

- TO - EDGE PAVEMENT

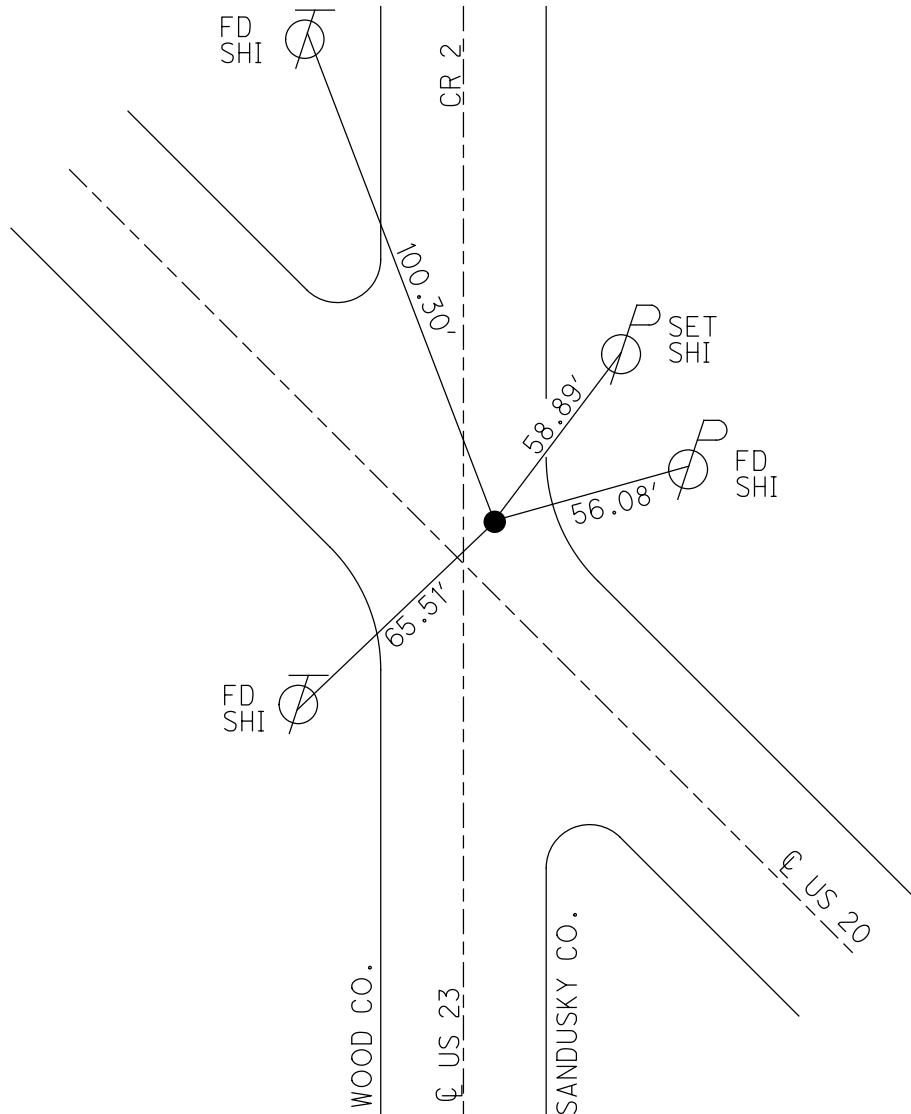
STATION: 0+00

HORZ.DATUM: - GEOID: -

GRID: NORTHING: - EASTING: -



RECORD:  
FD MINE SPIKE  
9/23/85, RIPPLE



# O.D.O.T. DISTRICT 2 SURVEY OFFICE

PERSONNEL \_\_\_\_\_

REFERENCE NO. A

SHEET 1 OF 10

NOTES LOEHRKE

H.C. POUSAS

R.C. CANTERBURY

DATE 5-2-96

WEATHER FAIR - WINDY

TEMP. +50°

ROUTE U.S. 20

COUNTY SANDUSKY

TOWNSHIP WOODVILLE

SECTION 19

T 6 N R 13 E

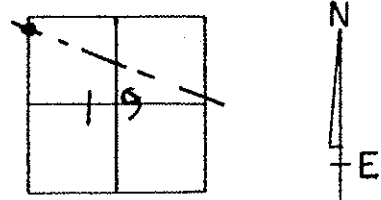
TYPE MONUMENT Sm. R.R. Spike

ON SURFACE - BELOW Yes

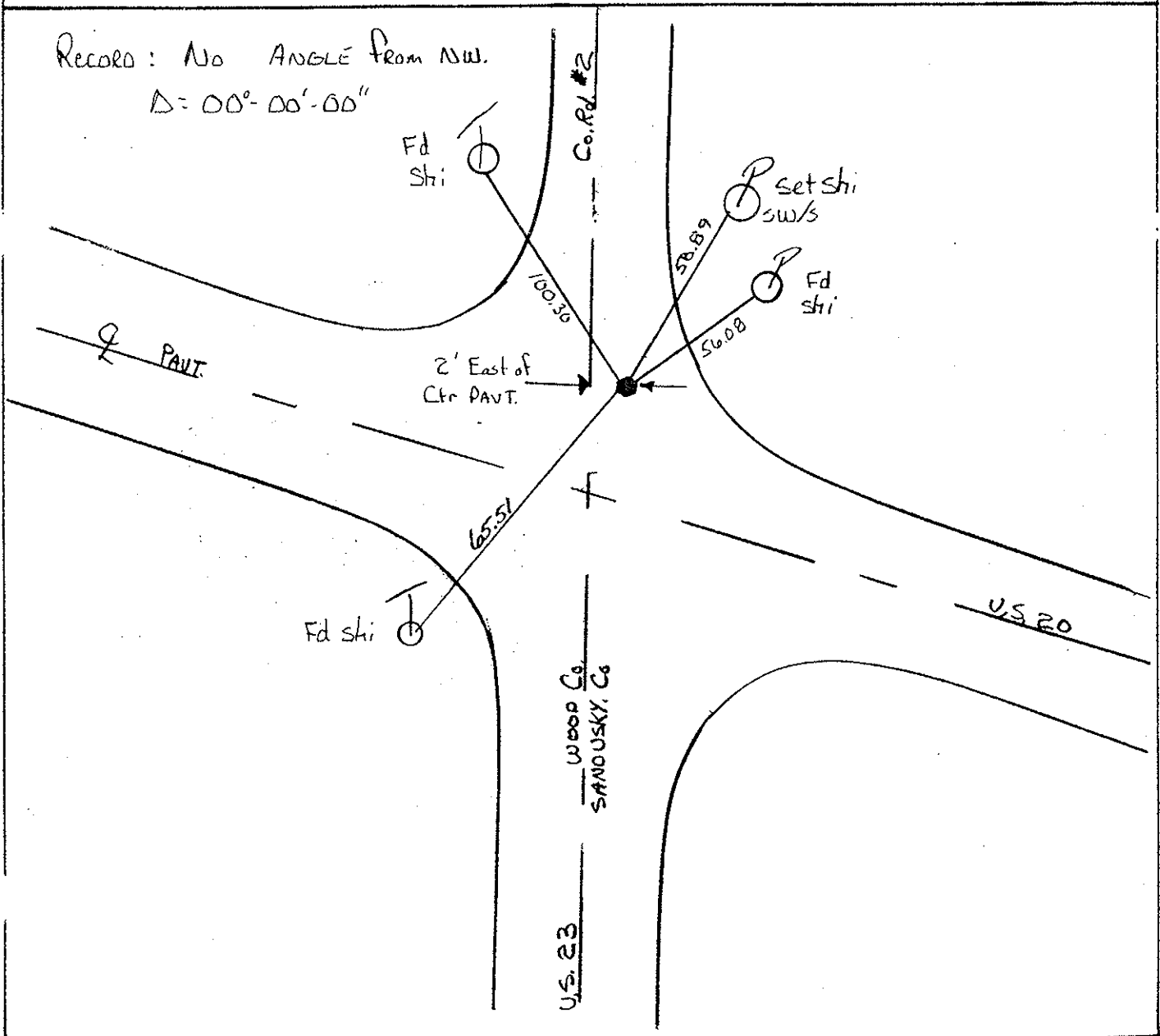
LEFT - ☉ PAV'T. - RIGHT 12.7

TO EDGE PAVEMENT

S.L.M. 0+00



RECORD: NO ANGLE FROM NW.  
 $\Delta = 00^{\circ} - 00' - 00''$



Resurfaces 1996

O.D.O.T. DISTRICT 2 SURVEY OFFICE

PERSONNEL

REFERENCE NO. 1 SHEET 1 OF       

NOTES CROWIN  
H.C. RIPPLE  
R.C. BARBOUR  
GEYMAN

DATE 9/23/85  
WEATHER SUNNY  
TEMP. 65°

ROUTE U.S. #20  
COUNTY SANDUSKY  
TOWNSHIP WOODVILLE  
SECTION 19  
T 6 N R 13 E

TYPE MONUMENT MINE SPIKE  
ON SURFACE - BELOW ON SURFACE  
LEFT - & PAW'T. - RIGHT 13.8' LT. & PAWT  
TO EDGE PAVEMENT  
S.L.M. 0.00

①

77	80	81	84
		9	
ROAD		TRACTS	
78	79	82	83

