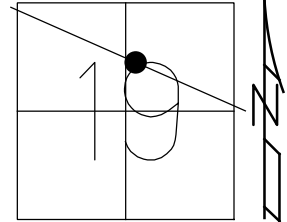


O.D.O.T. DISTRICT 2 SURVEY OFFICE (USE ONLY)

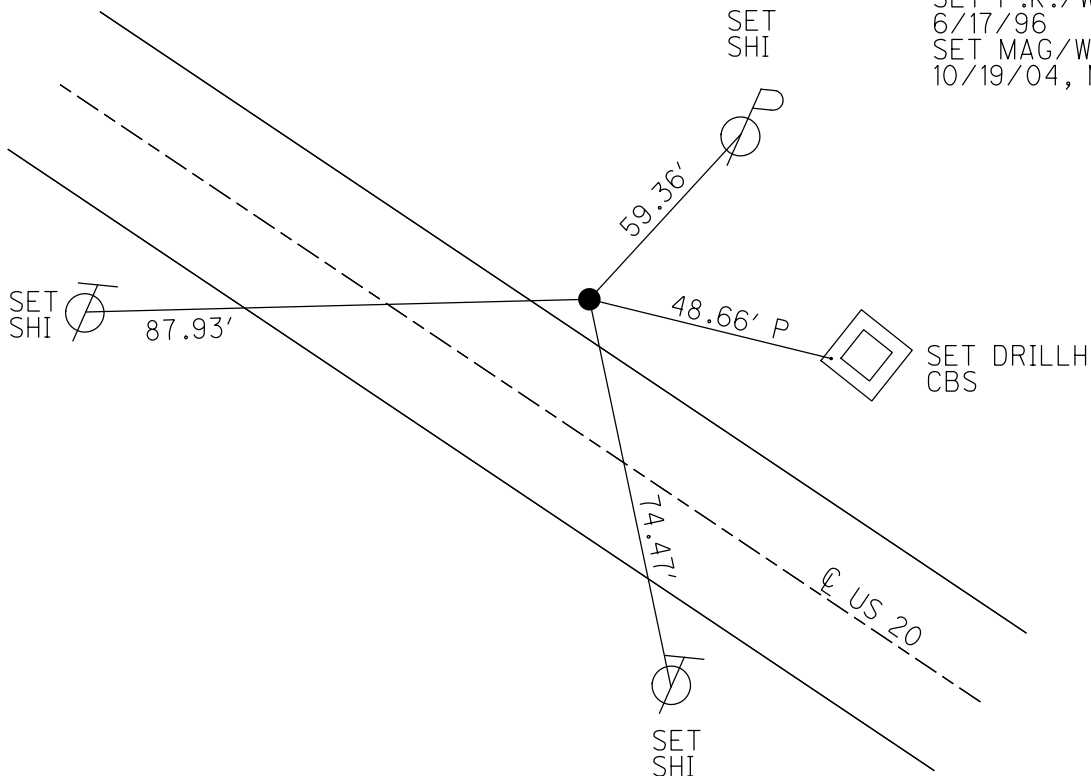
PERSONNEL \_\_\_\_\_ REFERENCE NO. 3 SHEET 2 OF 20  
 NOTES BARNHISEL DATE 4/1/04 ROUTE US 20  
 H.C. HUSS WEATHER CLOUDY COUNTY SANDUSKY  
 R.C. BARNHISEL TEMP. 37 ° F TOWNSHIP WOODVILLE  
           HOOKE, HUSS SECTION 19  
 DWG BY AUBLE PID \_\_\_\_\_ T 6 N R 13 E

TYPE MONUMENT P.K./WASHER  
 ON SURFACE - ~~BELOW~~ ON \_\_\_\_\_  
 OFFSET ☉ PAVEMENT 13.6' LT : ~~RT~~  
1.4' TO LT EDGE PAVEMENT  
 STATION: 28+76



HORZ.DATUM: \_\_\_\_\_ - \_\_\_\_\_ GEOID: \_\_\_\_\_ - \_\_\_\_\_  
 GRID: NORTHING: \_\_\_\_\_ - \_\_\_\_\_ EASTING: \_\_\_\_\_ - \_\_\_\_\_

RECORD:  
 STA. 28+73.71  
 FD IRON BOLT  
 8/25/72  
 SET BOAT SPIKE  
 10/15/74  
 FD P.K./WASHER  
 ATOP BOAT SPIKE  
 9/23/85, RIPPLE  
 SET P.K./WASHER  
 6/17/96  
 SET MAG/WASHER  
 10/19/04, MB



# O.D.O.T. DISTRICT 2 SURVEY OFFICE

PERSONNEL

REFERENCE NO. B

SHEET 2 OF 18

NOTES BARNHISEL

H.C. HUSS

R.C. BARNHISEL

HOOVER

DRAWN BY HUSS

DATE 4/01/04

WEATHER CLOUDY

TEMP. +37°

ROUTE U.S. 20

COUNTY Sandusky

TOWNSHIP Woodville

SECTION 19

T 6 N R 13 E

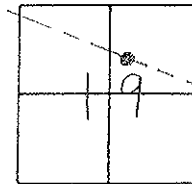
TYPE MONUMENT P.K. / WASHER

ON SURFACE - BELOW SURFACE

LEFT - 1.4 LT OF 1.4 LT TO RIGHT 13.6' LT E

1.4 LT TO LT. EDGE PAVEMENT

S.L.M. 28 + 76

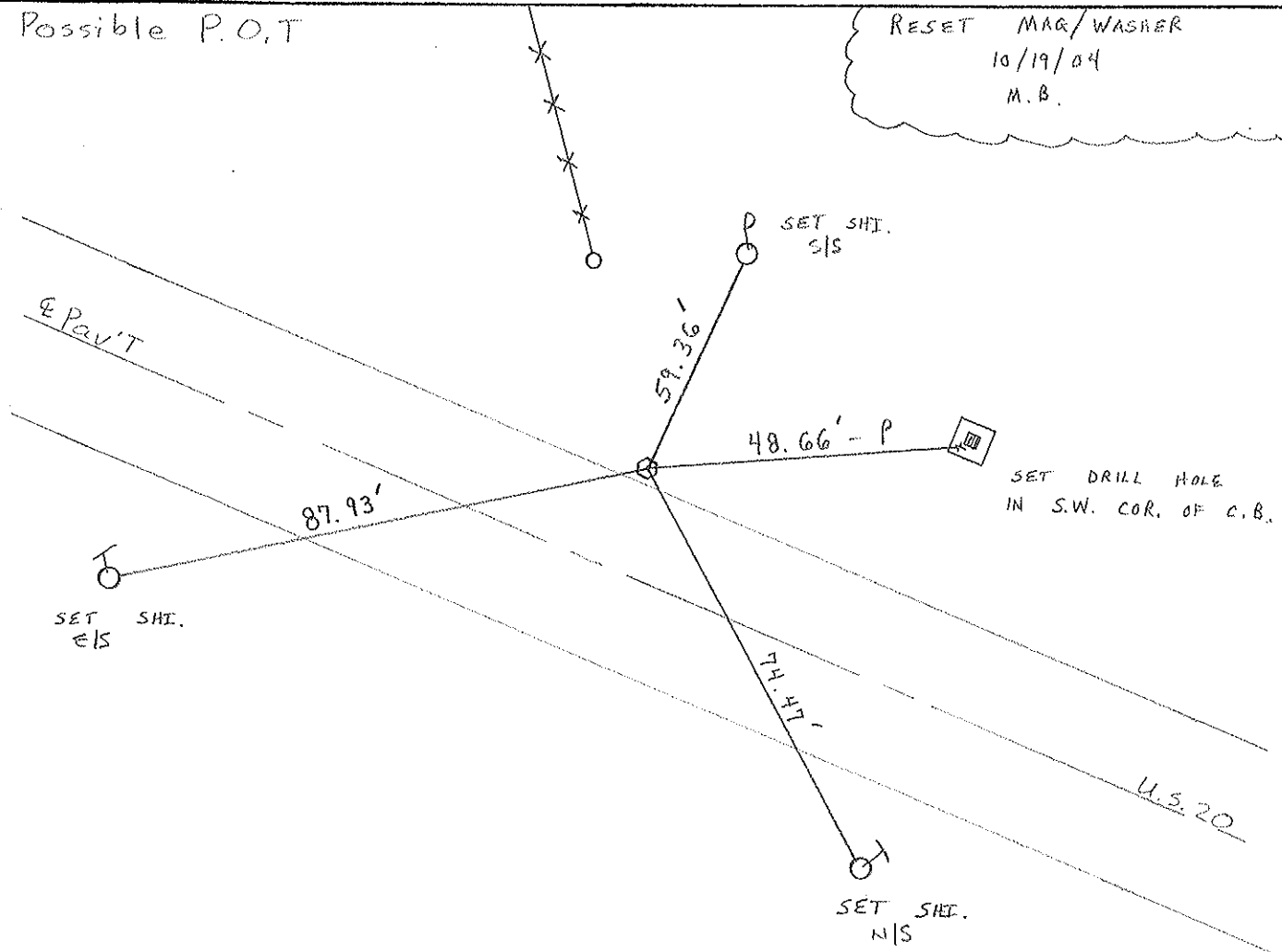


Possible P.O.T

RESET MAG/WASHER

10/19/04

M.B.



# O.D.O.T. DISTRICT 2 SURVEY OFFICE

PERSONNEL

REFERENCE NO. 3

SHEET 2 OF       

NOTES CROWIN  
 H.C. RIPPLE  
 R.C. BARBOUR  
GEYMAN

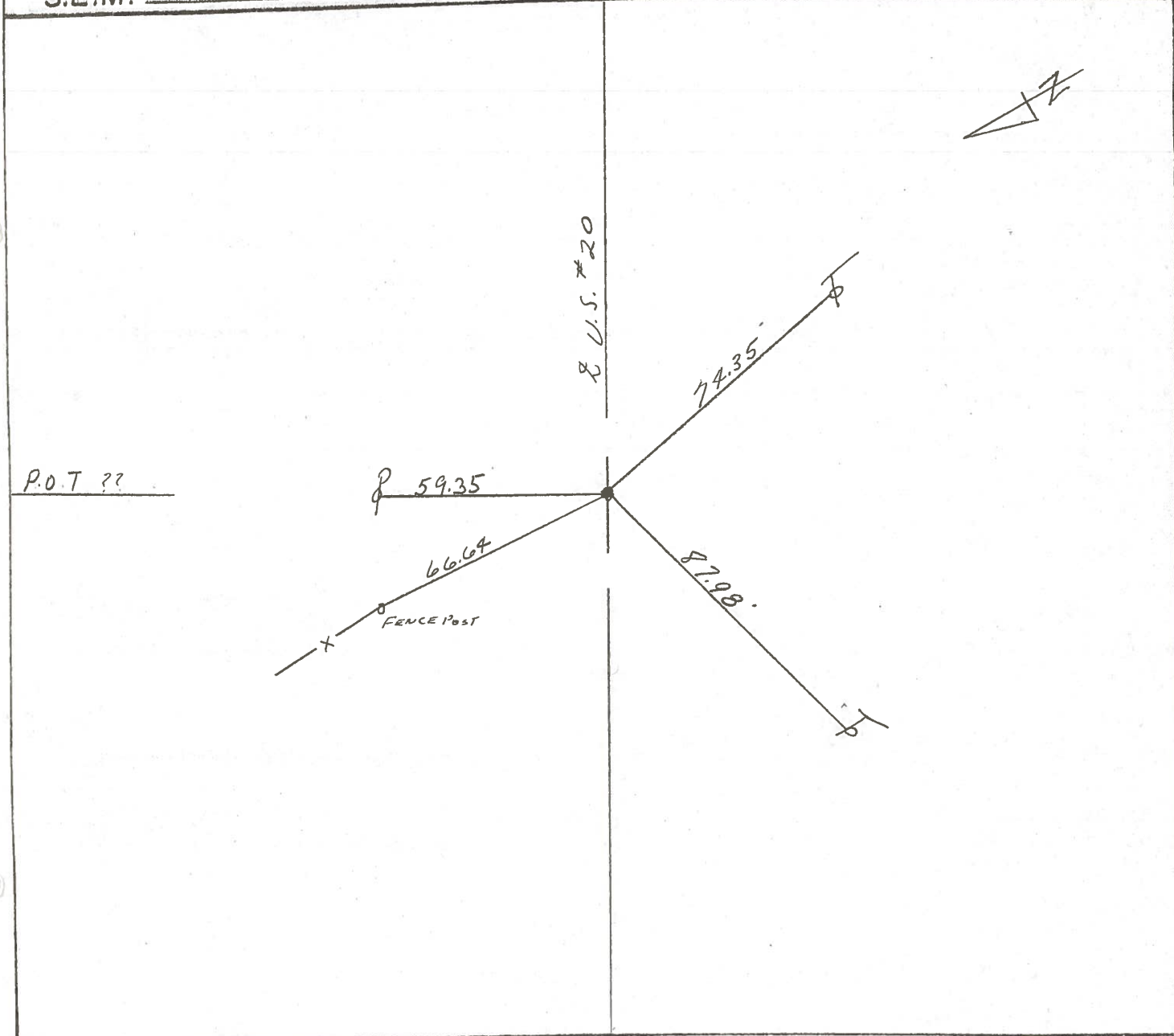
DATE 9/23/85  
 WEATHER SUNNY  
 TEMP. 65°

ROUTE U.S. #20  
 COUNTY SANDUSKY  
 TOWNSHIP WOODVILLE  
 SECTION 19  
T 6 N R 13 E

TYPE MONUMENT P.K. WASHER AT OP BOAT SPIKE  
 ON SURFACE - BELOW ON SURFACE  
 LEFT - & PAV'T. - RIGHT 13.8' LT & PAVT  
 TO EDGE PAVEMENT  
 S.L.M. 0.545± 28+76±

3

77	80	81	84
/	/	9	/
ROAD		TRAFFIC	
78	79	82	83





PERSONNEL TITLE PERSONNEL TITLE

COUNTY SANDUSKY DATE Aug. 25, 1977

Township \_\_\_\_\_

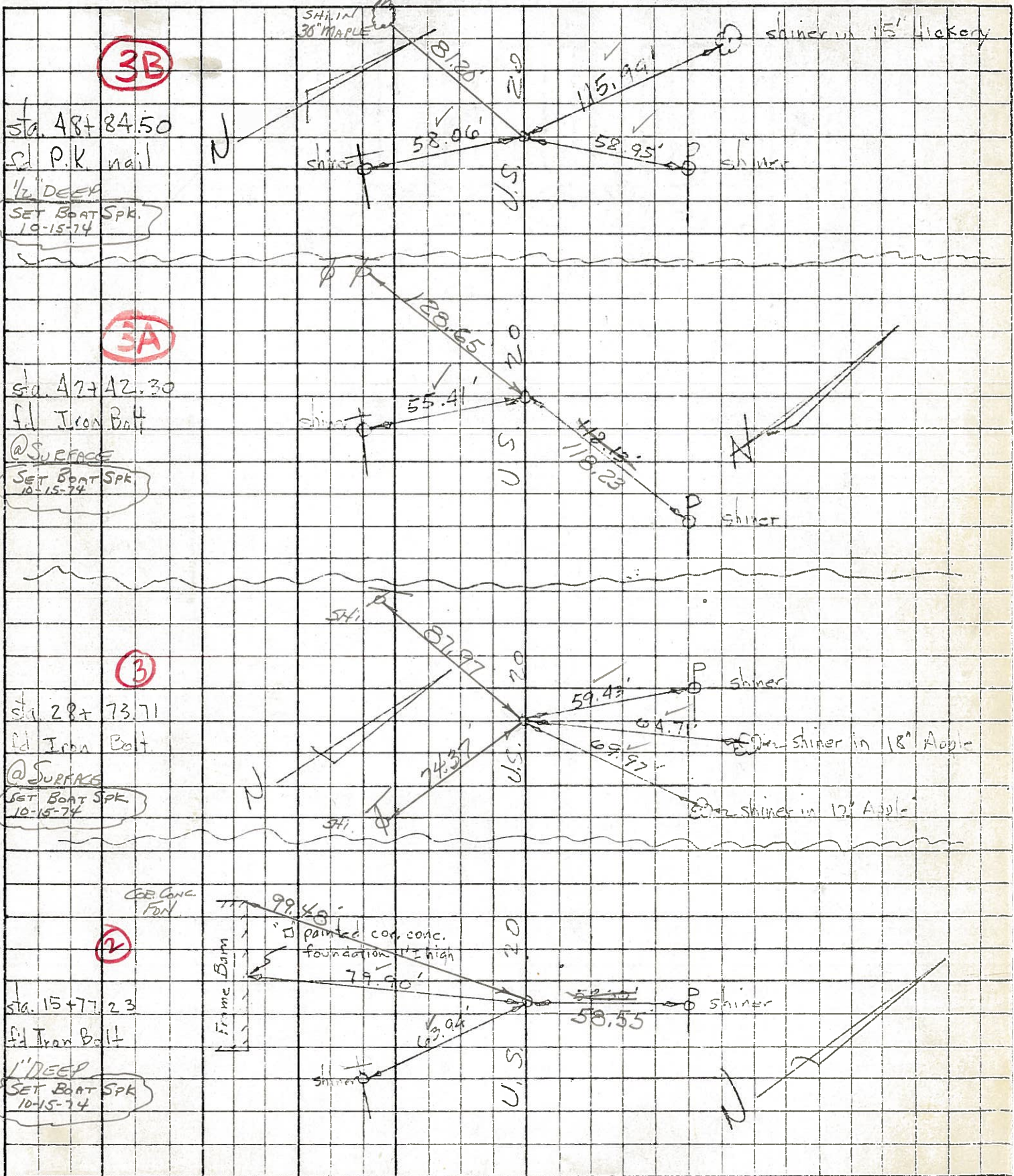
S. R. U. S. 20 WEATHER \_\_\_\_\_

Granata \_\_\_\_\_

SEC. \_\_\_\_\_ TEMP. \_\_\_\_\_

DESCRIPTION Ref. Mon. U.S. 20 (SANDUSKY Co.) JOB NO. \_\_\_\_\_

LEFT CENTER LINE RIGHT



OK 8-74

K 8-74

OK 8-74

OK 8-74