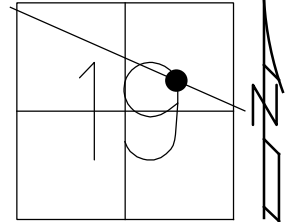


O.D.O.T. DISTRICT 2 SURVEY OFFICE (USE ONLY)

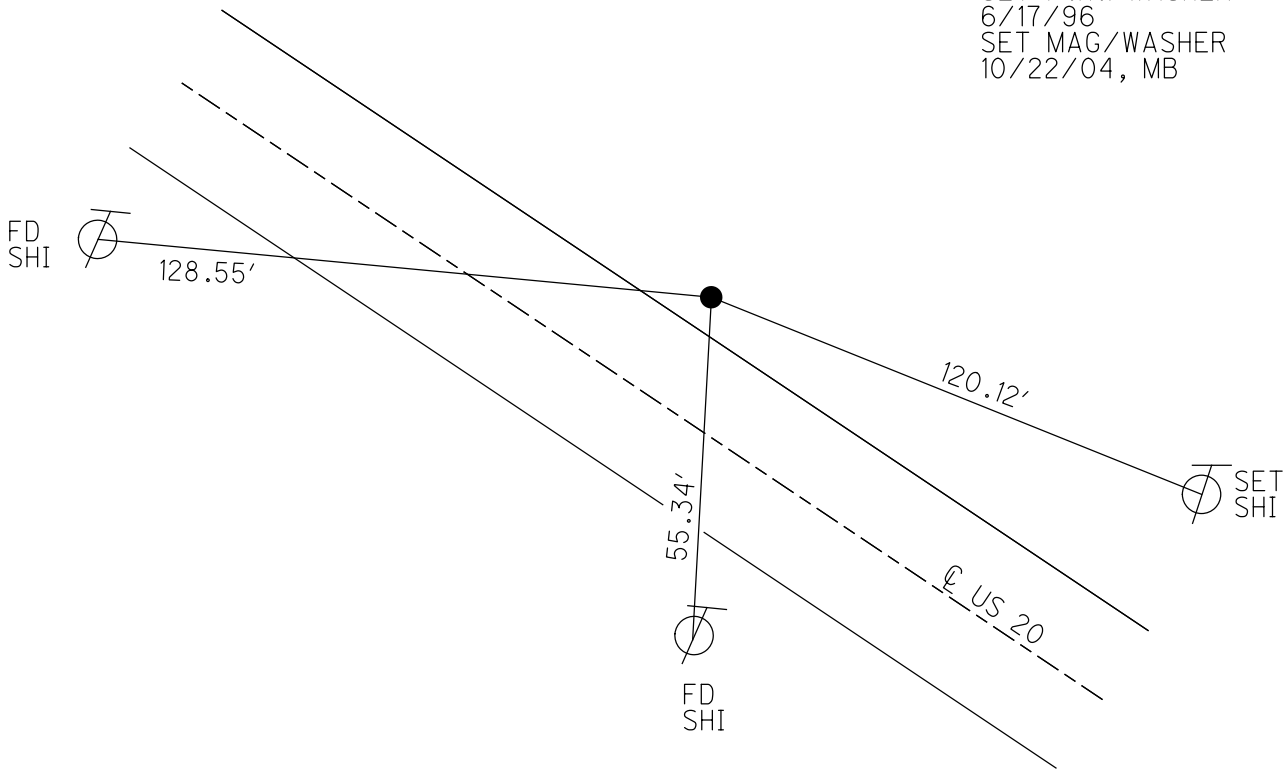
PERSONNEL _____ REFERENCE NO. 3 A SHEET 3 OF 20
 NOTES BARNHISEL DATE 7/26/04 ROUTE US 20
 H.C. CANTERBURY WEATHER CLOUDY COUNTY SANDUSKY
 R.C. ADKINS TEMP. 65°F TOWNSHIP WOODVILLE
 HUSS SECTION 19
 DWG BY AUBLE PID _____ T 6 N R 13 E

TYPE MONUMENT P.K./WASHER
 ON SURFACE - ~~BELOW~~ ON _____
 OFFSET \odot PAVEMENT 13' LT : ~~RT~~
1.4' TO LT EDGE PAVEMENT
 STATION: 42+46



HORZ.DATUM: _____ - _____ GEOID: _____ - _____
 GRID: NORTHING: _____ - _____ EASTING: _____ - _____

RECORD:
 STA. 42+42.30
 FD IRON BOLT
 8/25/72
 FD P.K./WASHER
 ATOP BOAT SPIKE
 9/23/85, RIPPLE
 SET P.K./WASHER
 6/17/96
 SET MAG/WASHER
 10/22/04, MB



O.D.O.T. DISTRICT 2 SURVEY OFFICE

PERSONNEL

REFERENCE NO. C

SHEET 3 OF 18

NOTES BARNHISEL

H.C. CANTERBURY

R.C. ADKINS

DRAWN BY HUSS

DATE 7/26/04

WEATHER CLOUDY

TEMP. +65°

ROUTE U.S. 20

COUNTY Sandusky

TOWNSHIP Woodville

SECTION 19

T. 6 N. R. 13 E.

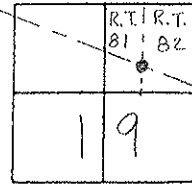
TYPE MONUMENT P.K. / WASHER

ON SURFACE - ~~BELOW~~ SURFACE

LEFT - CL. PAV'T. - RIGHT 13.0' LT. CL.

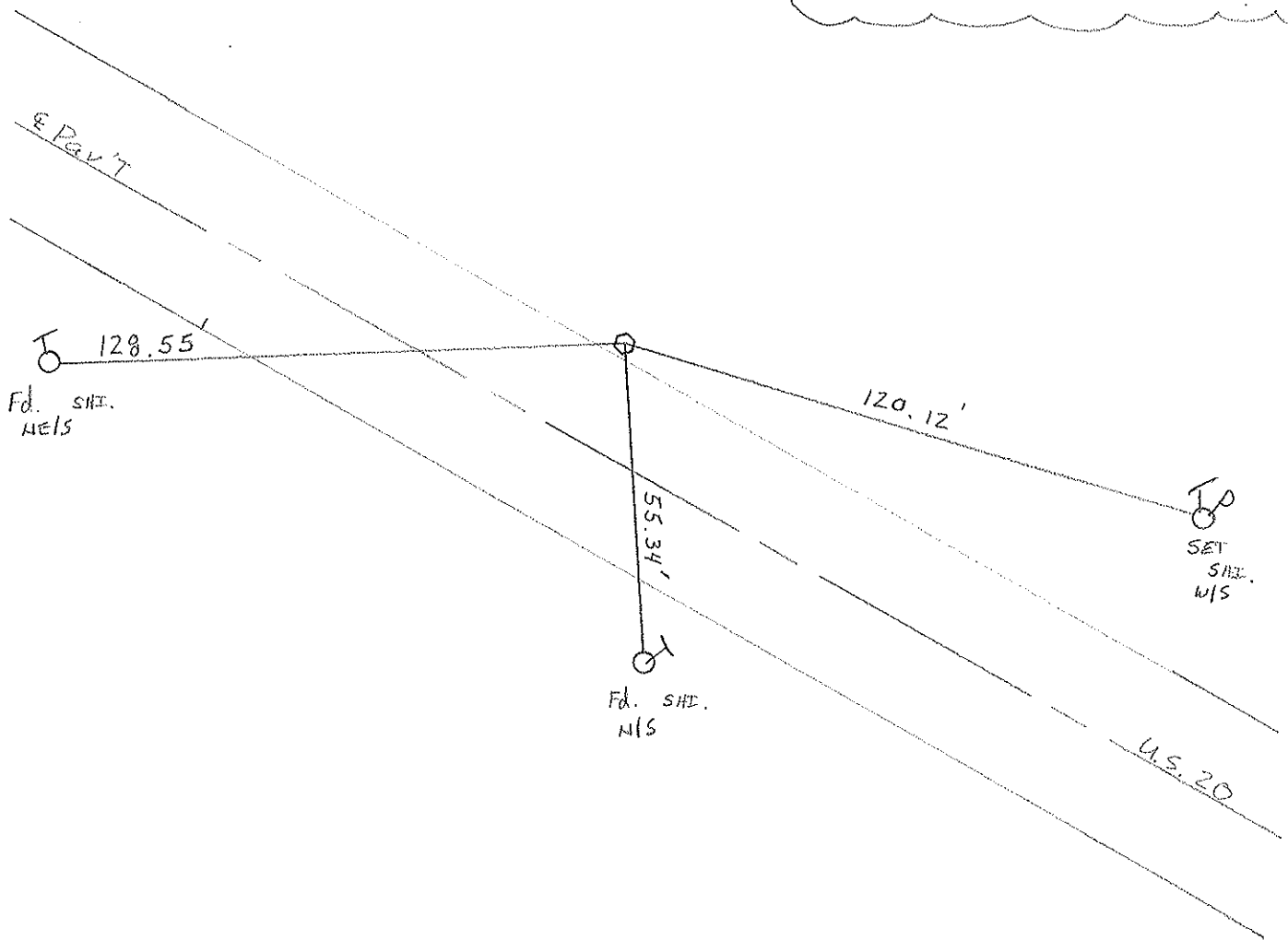
1.4' LT. TO LT. EDGE PAVEMENT

S.L.M. 42 + 46



Possible P.O.T

RESET MAR / WASHER
10/22/04
M.B.



O.D.O.T. DISTRICT 2 SURVEY OFFICE

PERSONNEL

REFERENCE NO. _____

SHEET 3 OF _____

NOTES CROBIN
 H.C. RIPPLE
 R.C. BARBOUR
COYMAN

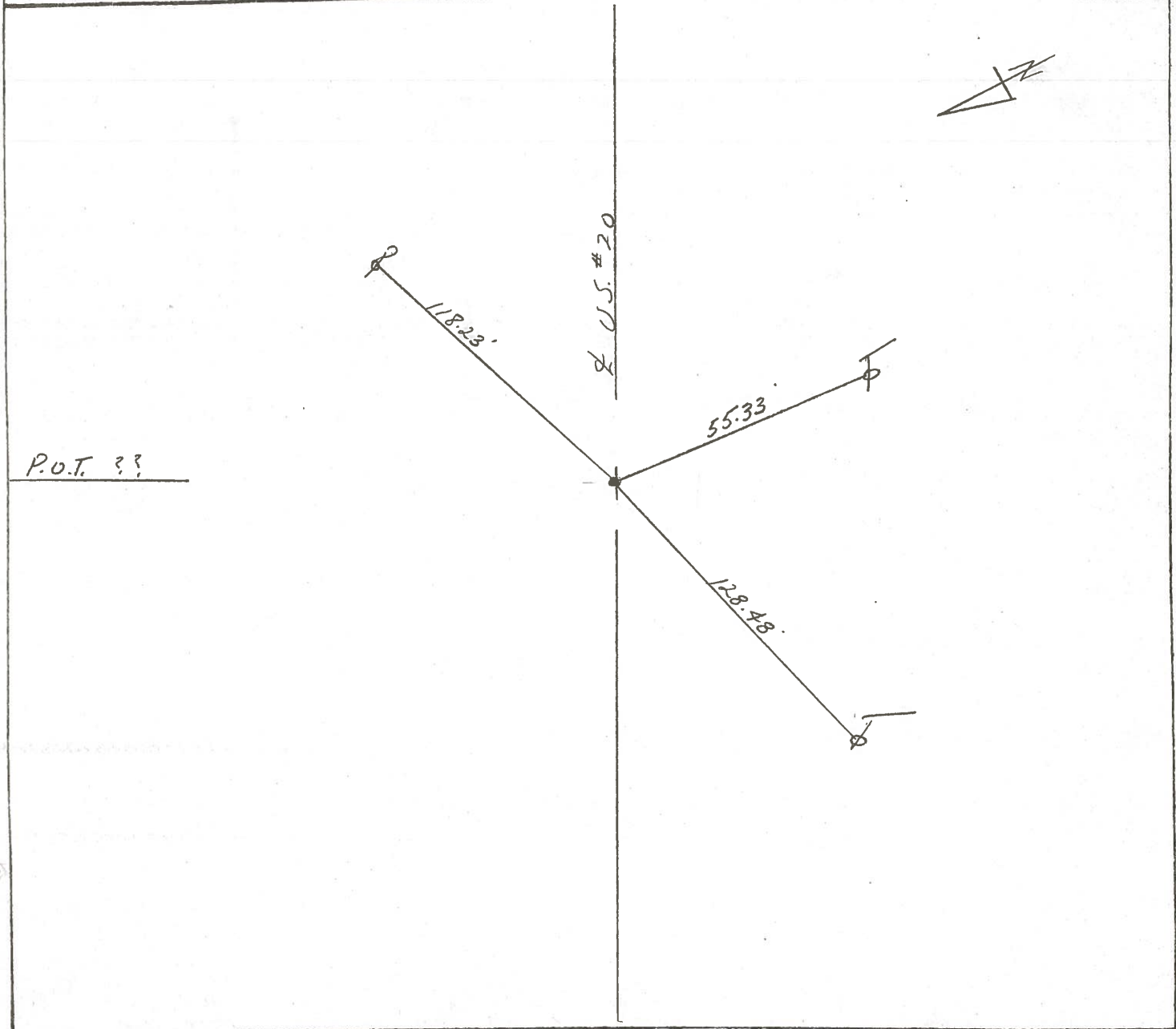
DATE 9/23/85
 WEATHER SUNNY
 TEMP. 68°

ROUTE U.S. #20
 COUNTY SANDUSKY
 TOWNSHIP Woodville
 SECTION 19
T6 N R 13 E

TYPE MONUMENT PK & WASHER ATOP BOAT SPK
 ON SURFACE - BELOW ON SURFACE
 LEFT - Q PAV'T. - RIGHT 13' Lt. & Pav't
 TO EDGE PAVEMENT
 S.L.M. 0.804t 42+44t

3A

27	80	81	82
1		9	
Road		TRACTS	
78	79	82	83



PERSONNEL TITLE PERSONNEL TITLE
 Tomsic _____
 Granata _____
 Gancarz _____

COUNTY SANDUSKY DATE Aug. 25, 197

S. R. U.S. 20 WEATHER _____

SEC. Woodville twp TEMP. _____

DESCRIPTION Ref. Mon. U.S. 20 (SANDUSKY CO.) JOB NO. _____

