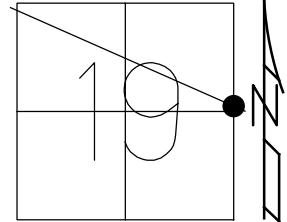


O.D.O.T. DISTRICT 2 SURVEY OFFICE (USE ONLY)

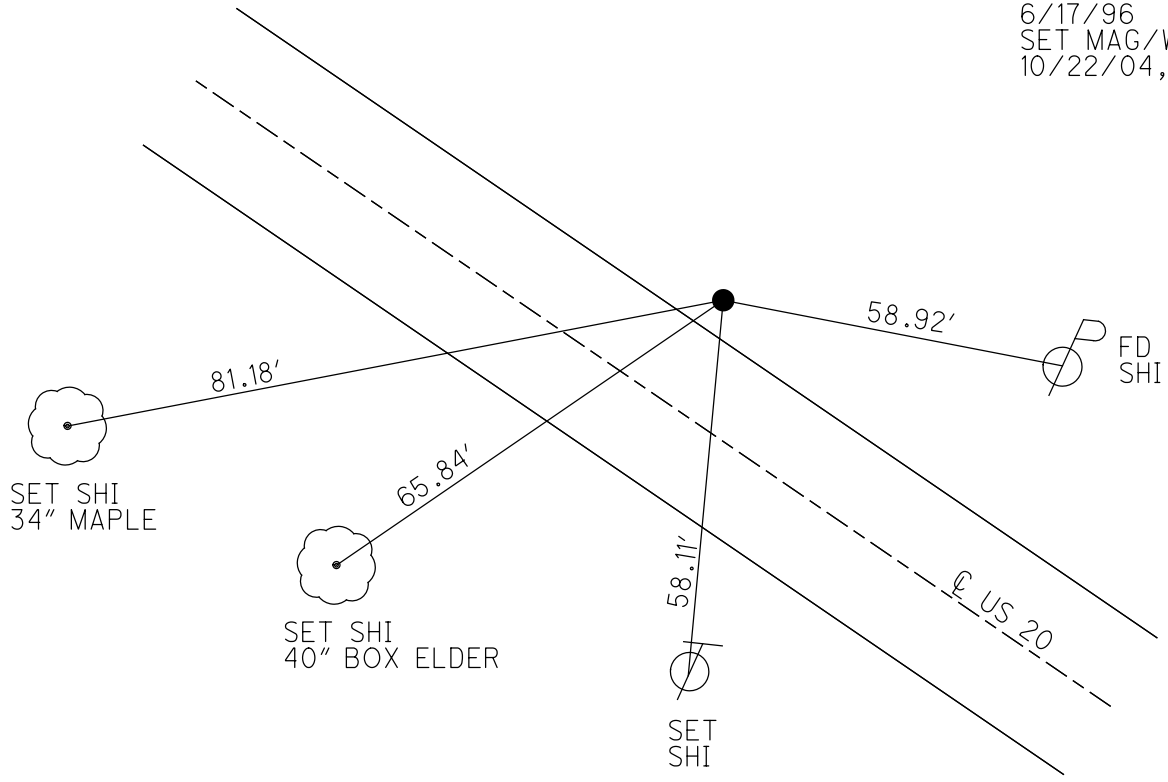
PERSONNEL \_\_\_\_\_ REFERENCE NO. 3 B SHEET 4 OF 20  
 NOTES BARNHEISEL DATE 4/1/04 ROUTE US 20  
 H.C. HUSS WEATHER CLOUDY COUNTY SANDUSKY  
 R.C. BARNHEISEL TEMP. 36°F TOWNSHIP WOODVILLE  
           HOOKE, HUSS SECTION 19  
 DWG BY AUBLE PID \_\_\_\_\_ T 6 N R 13 E

TYPE MONUMENT P.K./WASHER  
 ON SURFACE - ~~BELOW~~ ON \_\_\_\_\_  
 OFFSET  $\odot$  PAVEMENT 13.2' LT : ~~RT~~  
1.4' TO LT EDGE PAVEMENT  
 STATION: 48+88



HORZ.DATUM: \_\_\_\_\_ - \_\_\_\_\_ GEOID: \_\_\_\_\_ - \_\_\_\_\_  
 GRID: NORTHING: \_\_\_\_\_ - \_\_\_\_\_ EASTING: \_\_\_\_\_ - \_\_\_\_\_

RECORD:  
 STA.48+84.5  
 FD P.K.NAIL  
 8/25/72  
 FD P.K./WASHER  
 ATOP BOAT SPIKE  
 9/23/85, RIPPLE  
 SET P.K./WASHER  
 6/17/96  
 SET MAG/WASHER  
 10/22/04, MB



# O.D.O.T. DISTRICT 2 SURVEY OFFICE

PERSONNEL

REFERENCE NO. D

SHEET 4 OF 18

NOTES BARNHISEL

H.C. HUSS

R.C. BARNHISEL

HOOKE  
DRAWN BY HUSS

DATE 04/01/04

WEATHER CLOUDY

TEMP. +36°

ROUTE U.S. 20

COUNTY Sandusky

TOWNSHIP Woodville

SECTION 19

T 6 N R 13 E

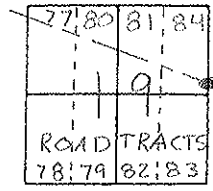
TYPE MONUMENT P.R. / WASHER

ON SURFACE - ~~BELOW~~ SURFACE

LEFT - ℄ PAV'T. - RIGHT 13.1' LT ℄

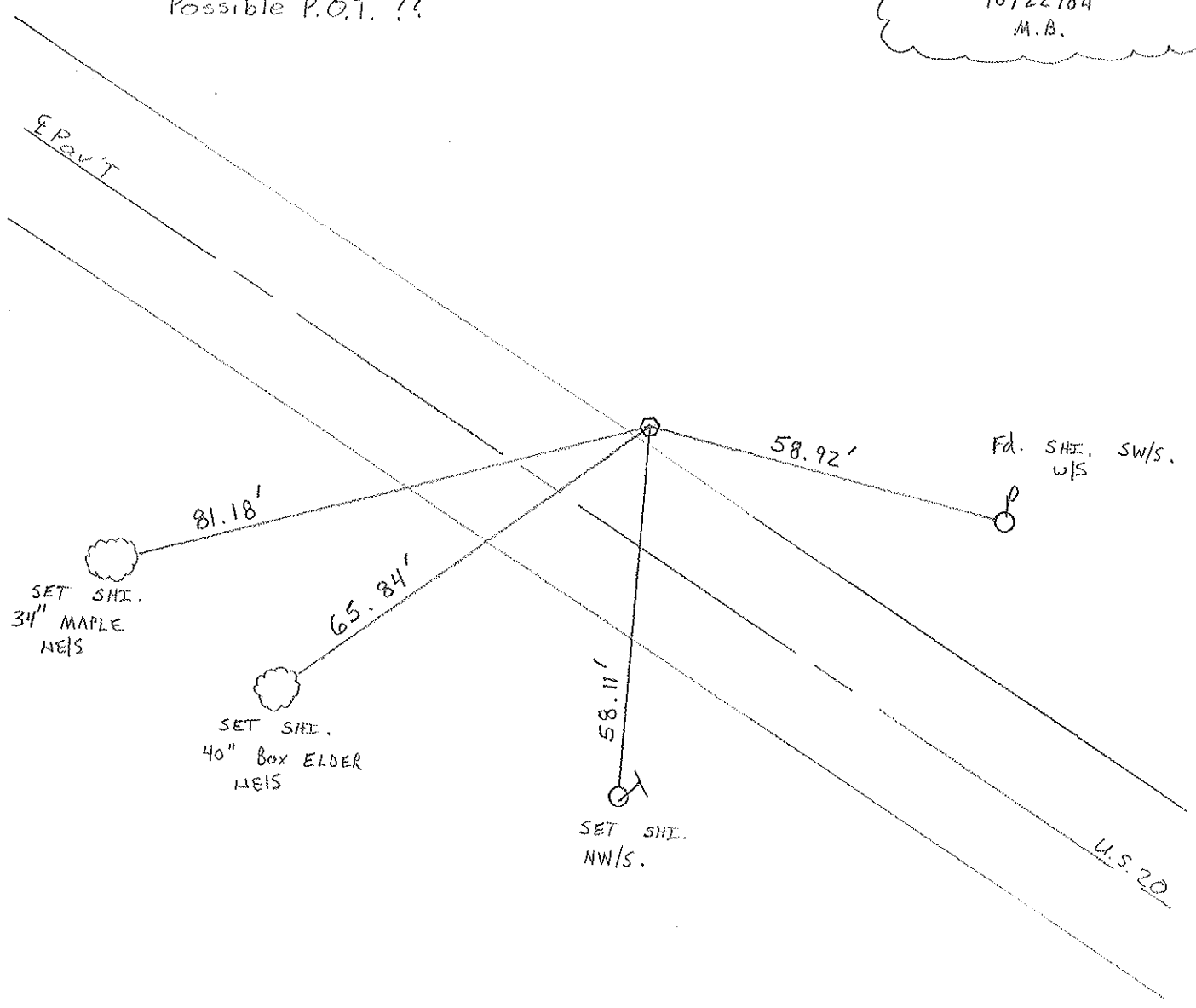
1.3' LT. TO <sup>OF</sup> LT. EDGE PAVEMENT

S.L.M. 48+88



Record: P.I. Sta 56+34.55 is missing 10-28-85  
Possible P.O.T. ??

RESET MAG/WASHER  
10/22/04  
M.B.



# O.D.O.T. DISTRICT 2 SURVEY OFFICE

PERSONNEL

NOTES CROWIN  
 H.C. RIPPLE  
 R.C. BARBOUR  
GEYMAN

REFERENCE NO. \_\_\_\_\_

DRAWN 10/28/85  
 DATE 9/23/85  
 WEATHER SUNNY  
 TEMP. 65°

SHEET 4 OF \_\_\_\_\_

ROUTE U.S. #20  
 COUNTY SANDUSKY  
 TOWNSHIP WOODVILLE  
 SECTION 19  
T. 6 N R. 13 E

TYPE MONUMENT P.K. WASHER TOP BOAT SPK  
 ON SURFACE - BELOW ON SURFACE  
 LEFT - CL PAV'T. - RIGHT 13.2' LT & PAUT  
 TO EDGE PAVEMENT  
 S.L.M. 0.925 ± 48+83 ±

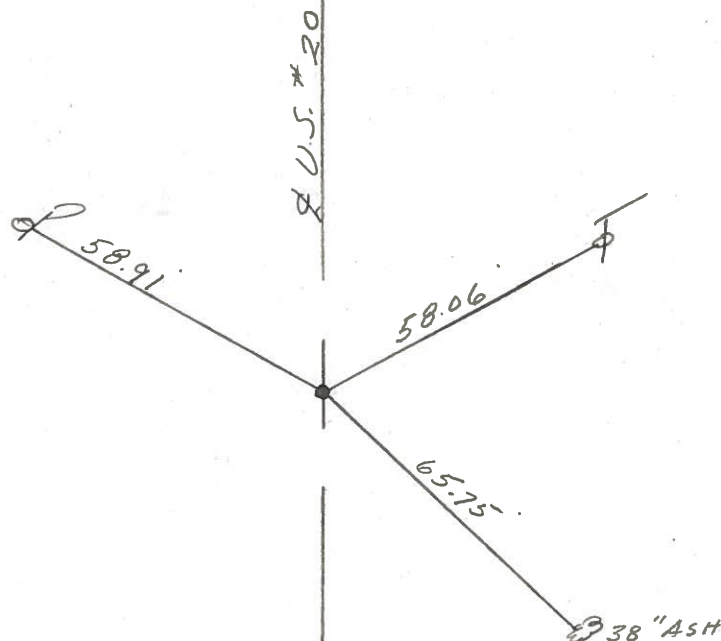
3B

77	80	81	84
		19	
ROAD		TRACTS	
78	79	82	83



\* Note P.I. MISSING AT  
56+34.55

P.O.T.??



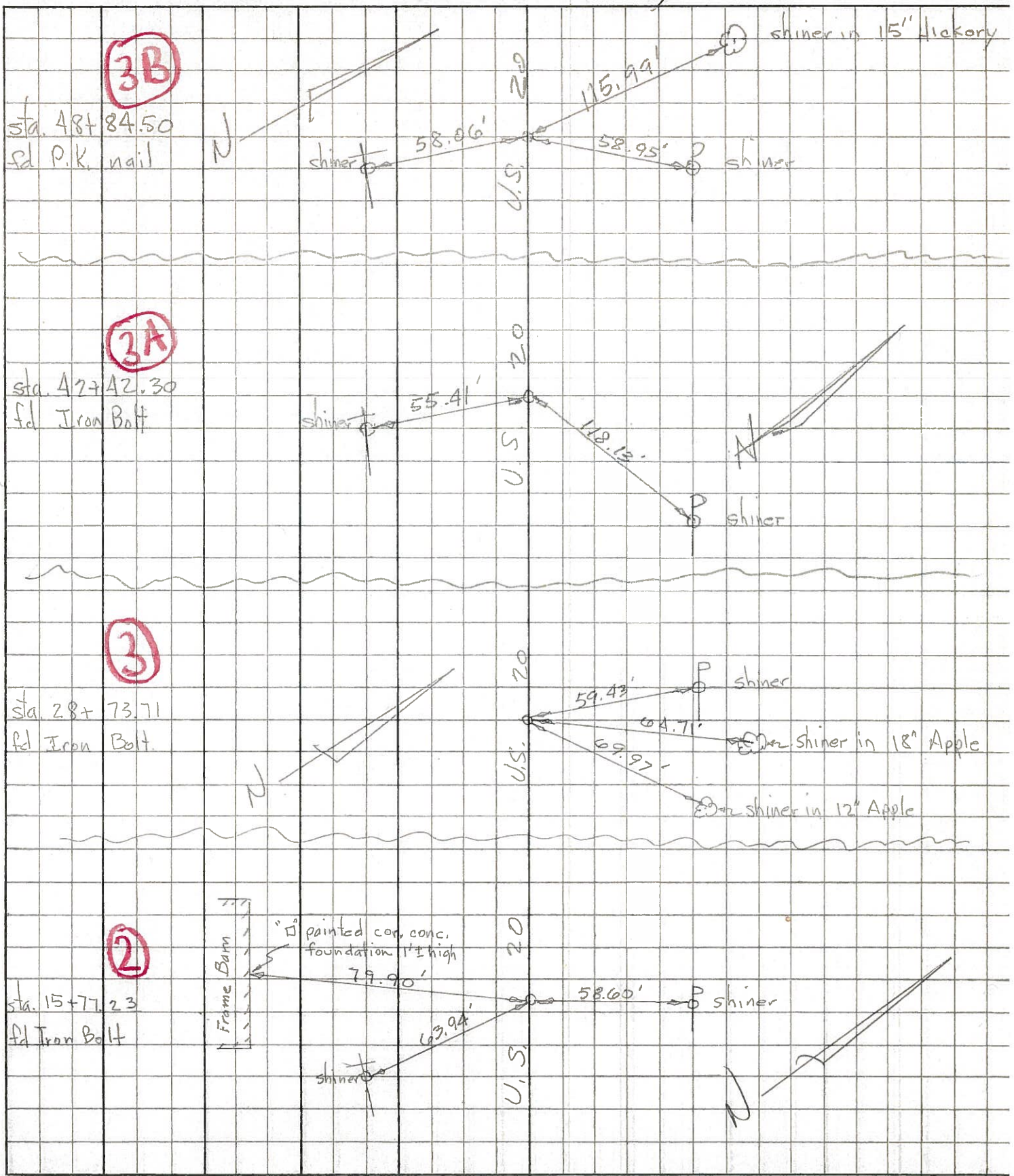
PERSONNEL	TITLE	PERSONNEL	TITLE
Tomsic			
Granata			
Gancarz			

COUNTY SANDUSKY DATE Aug. 25, 197

S. R. U.S. 20 WEATHER

SEC. Woodville twp TEMP.

DESCRIPTION Ref. Mon. U.S. 20 (SANDUSKY Co.) JOB NO.



PERSONNEL TITLE PERSONNEL TITLE

COUNTY Sandusky DATE

S. R. 20- WEATHER

SEC. 19-Woodville Twp. TEMP.

DESCRIPTION LEFT CENTER LINE RIGHT JOB NO.

