

O.D.O.T. DISTRICT 2 SURVEY OFFICE (USE ONLY)

PERSONNEL \_\_\_\_\_ REFERENCE NO. 4 SHEET 5 OF 20  
 NOTES BARNHISEL DATE 4/1/04 ROUTE US 20  
 H.C. HUSS WEATHER CLOUDY COUNTY SANDUSKY  
 R.C. BARNHISEL TEMP. 36°F TOWNSHIP WOODVILLE  
HOOKE, HUSS SECTION 20  
 DWG BY AUBLE PID \_\_\_\_\_ T 6 N R 13 E

TYPE MONUMENT P.K./WASHER

ON SURFACE - ~~BELOW~~ ON

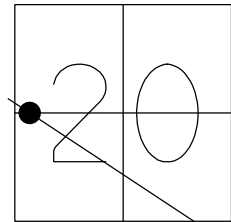
OFFSET 1.6' TO LT PAVEMENT 13.1' LT : ~~RT~~

1.6' TO LT EDGE PAVEMENT

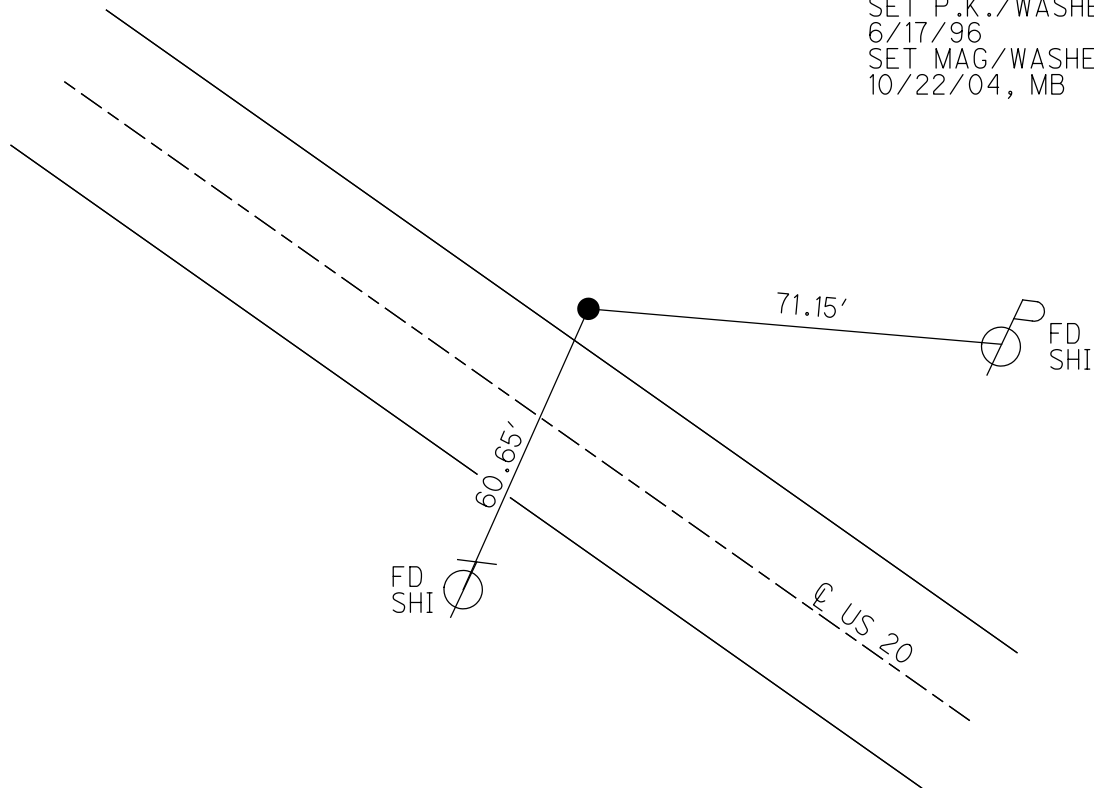
STATION: 68+74

HORZ.DATUM: - GEOID: -

GRID: NORTHING: - EASTING: -



RECORD:  
 STA. 68+66.99  
 FD TACKED HUB  
 8/25/72  
 FD P.K./WASHER  
 ATOP BOAT SPIKE  
 9/23/85, RIPPLE  
 SET P.K./WASHER  
 6/17/96  
 SET MAG/WASHER  
 10/22/04, MB



# O.D.O.T. DISTRICT 2 SURVEY OFFICE

PERSONNEL

REFERENCE NO. E

SHEET 5 OF 18

NOTES BARNHISEL

H.C. HUSS

R.C. BARNHISEL

HOOKE

DRAWN BY HUSS

DATE 04/01/04

WEATHER CLOUDY

TEMP. +36°

ROUTE U.S. 20

COUNTY Sandusky

TOWNSHIP Woodville

SECTION 20

T. 6 N. R. 13 E.

TYPE MONUMENT P.K. / WASHER

ON SURFACE - BELOW SURFACE

LEFT - 0 PAV'T. - RIGHT 13.1' LT ♀

1.6 LT. TO LT. EDGE PAVEMENT

S.L.M. 68 + 74

85	88	89	91
20			
ROAD		TRACTS	
86	87	90	



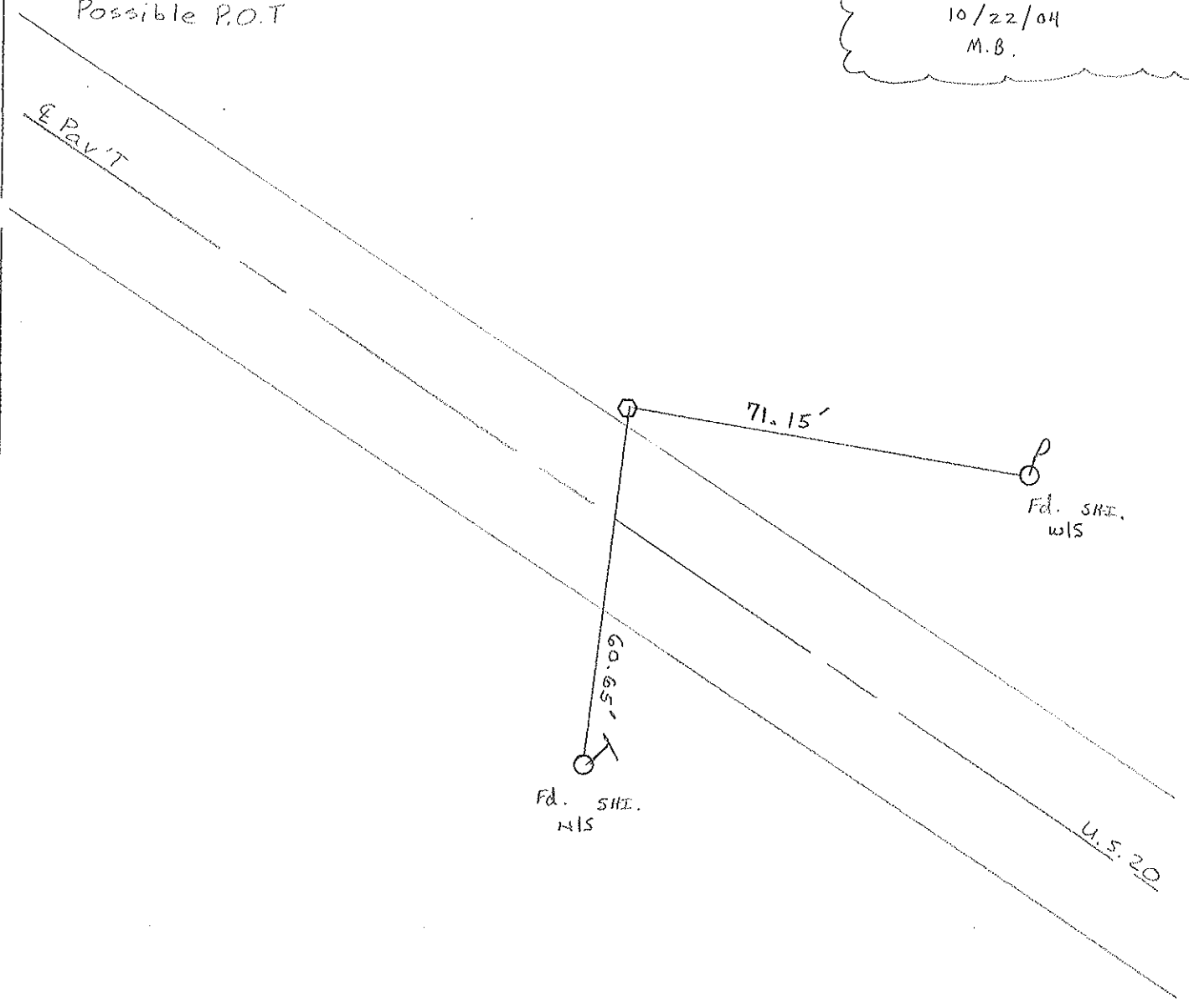
Record 10-28-95

Possible P.O.T

RESET MAG/WASHER

10/22/04

M.B.



# O.D.O.T. DISTRICT 2 SURVEY OFFICE

PERSONNEL

NOTES CRONIN  
 H.C. RIPPLE  
 R.C. BARBOUR  
GEYMAN

REFERENCE NO. \_\_\_\_\_  
 DRAWN 10/28/85  
 DATE 9/23/85  
 WEATHER SUNNY  
 TEMP. 68°

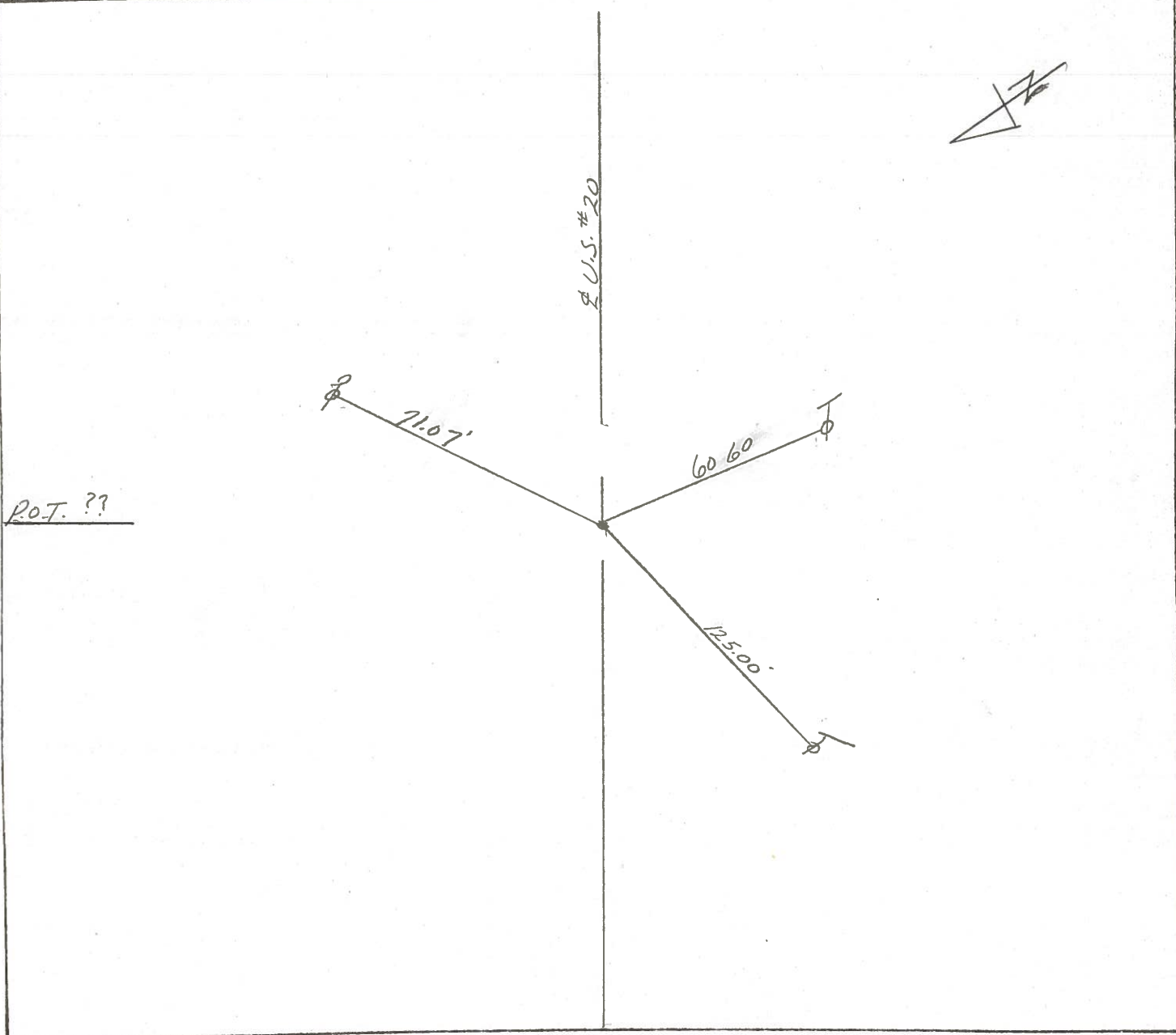
SHEET 5 OF \_\_\_\_\_

ROUTE U.S. #20  
 COUNTY SANDUSKY  
 TOWNSHIP WOODVILLE  
 SECTION \_\_\_\_\_  
T. 6 N R. 13 E

TYPE MONUMENT P.K. WASHER AT OP BOAT SPK.  
 ON SURFACE - BELOW ON SURFACE  
 LEFT - PAV'T. - RIGHT 13.4' Lt. & PAUT.  
 TO EDGE PAVEMENT  
 S.L.M. 1.301 ±      68770 ±

4

85	88	89	91
2		0	
ROAD		TRACTS	
86	87	90	91



PERSONNEL TITLE PERSONNEL TITLE

COUNTY Sandusky

DATE Aug. 25, 1972

Tolmasic  
Granata  
Gancarz

S. R. U. S. 20

WEATHER \_\_\_\_\_

SEC. Woodsville Twp

TEMP. \_\_\_\_\_

DESCRIPTION Ref. Mon. U.S. 20 (Sandusky Co.)

JOB NO. \_\_\_\_\_

LEFT

CENTER LINE

RIGHT

