

O.D.O.T. DISTRICT 2 SURVEY OFFICE (USE ONLY)

PERSONNEL

REFERENCE NO. 4 A

SHEET 6 OF 20

NOTES BARNHEISEL

DATE 4/1/04

ROUTE US 20

H.C. HUSS

WEATHER CLOUDY

COUNTY SANDUSKY

R.C. HOOKE

TEMP. 36°F

TOWNSHIP WOODVILLE

SECTION 20

DWG BY AUBLE

PID \_\_\_\_\_

T 6 N R 13 E

TYPE MONUMENT P.K./WASHER

ON SURFACE - ~~BELOW~~ ON

OFFSET ☉ PAVEMENT 13.2' LT : ~~RT~~

1.7' TO LT EDGE PAVEMENT

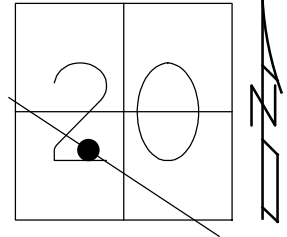
STATION: 78+29

HORIZ.DATUM: -

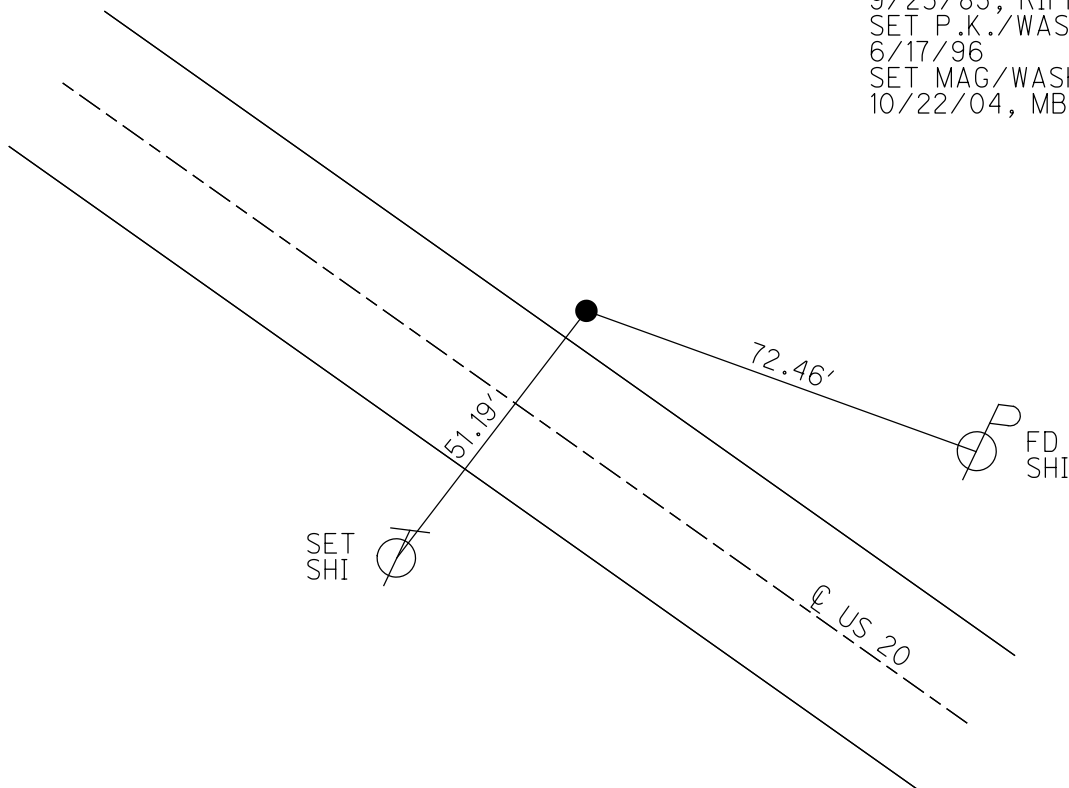
GEOID: -

GRID: NORTHING: -

EASTING: -



RECORD:  
STA.78+21.61  
SET P.K.NAIL  
IN OLD HUB  
8/25/72  
FD P.K./WASHER  
ATOP BOAT SPIKE  
9/23/85, RIPPLE  
SET P.K./WASHER  
6/17/96  
SET MAG/WASHER  
10/22/04, MB



# O.D.O.T. DISTRICT 2 SURVEY OFFICE

PERSONNEL

REFERENCE NO. F

SHEET 6 OF 18

NOTES BARNHISEL

H.C. HUSS DRAWING

R.C. HOOKER

DATE 04/01/04

WEATHER CLOUDY

TEMP. +36°

ROUTE U.S. 20

COUNTY Sandusky

TOWNSHIP Woodville

SECTION 20

T. 6 N. R. 13 E.

TYPE MONUMENT P.K. / WASHER

ON SURFACE - ~~BELOW~~ SURFACE

LEFT - ~~C~~ PAV'T. - RIGHT 13.2' LT 2

1.7' LT. TO LT. EDGE PAVEMENT

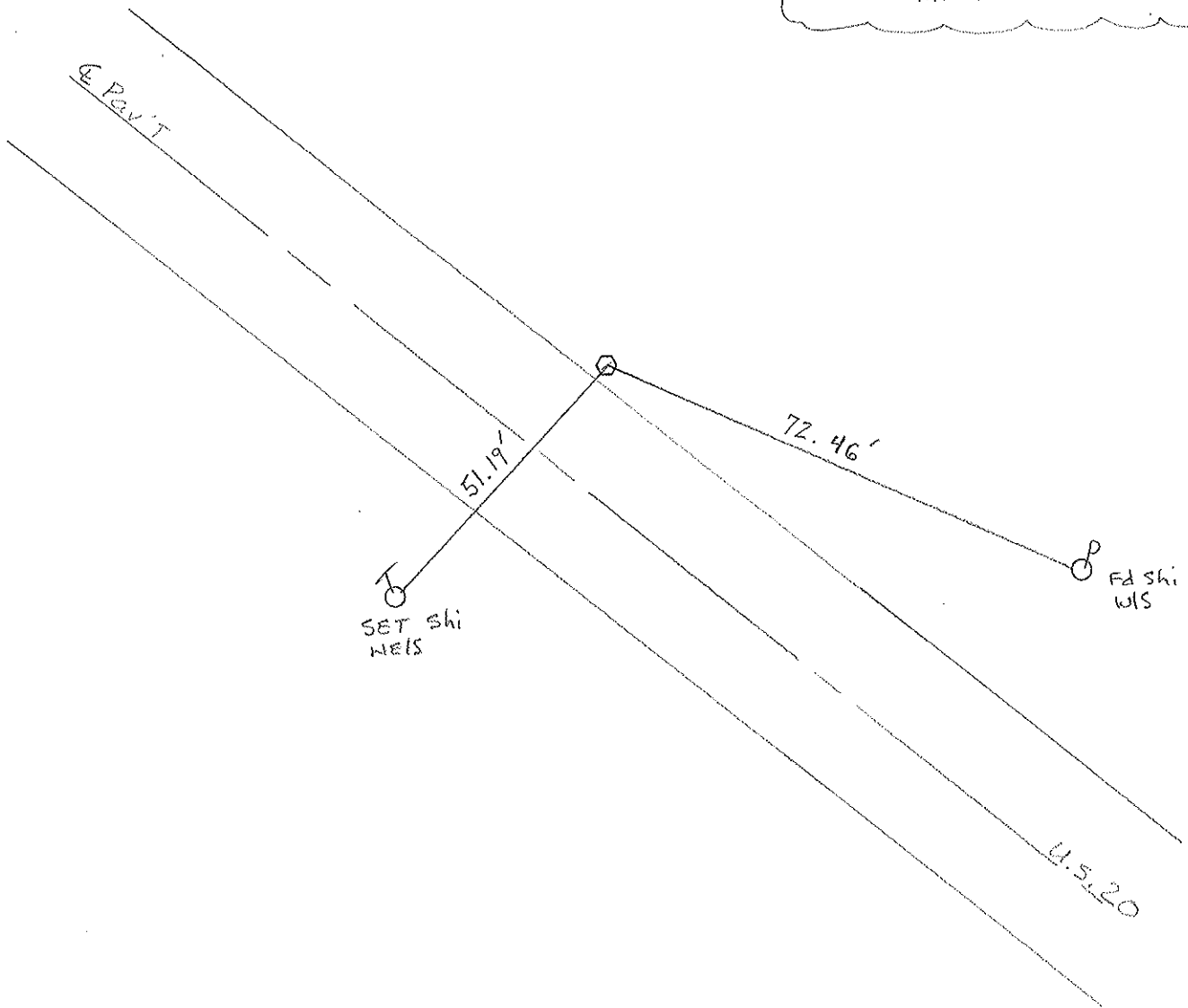
S.L.M. 78+29

85.88	89.191
20	0
ROAD TRAGTS	
86.87	90.



Record 10-31-85  
Possible P.O.T.

RESET MAG/WASHER  
10/22/04  
M.B.



# O.D.O.T. DISTRICT 2 SURVEY OFFICE

PERSONNEL \_\_\_\_\_

REFERENCE NO. \_\_\_\_\_

SHEET 6 OF \_\_\_\_\_

NOTES CRONIN

DRAWN 10/31/85

H.C. RIPPLE

DATE 9/23/85

R.C. BARBOUR

WEATHER SUNNY

GEYMAN

TEMP. 70°

ROUTE U.S. # 20

COUNTY SANDUSKY

TOWNSHIP WOODVILLE

SECTION 20

T. 6 N R. 13 E

TYPE MONUMENT P.K. & WASHER AT TOP BOAT SPK.

ON SURFACE - BELOW ON SURFACE

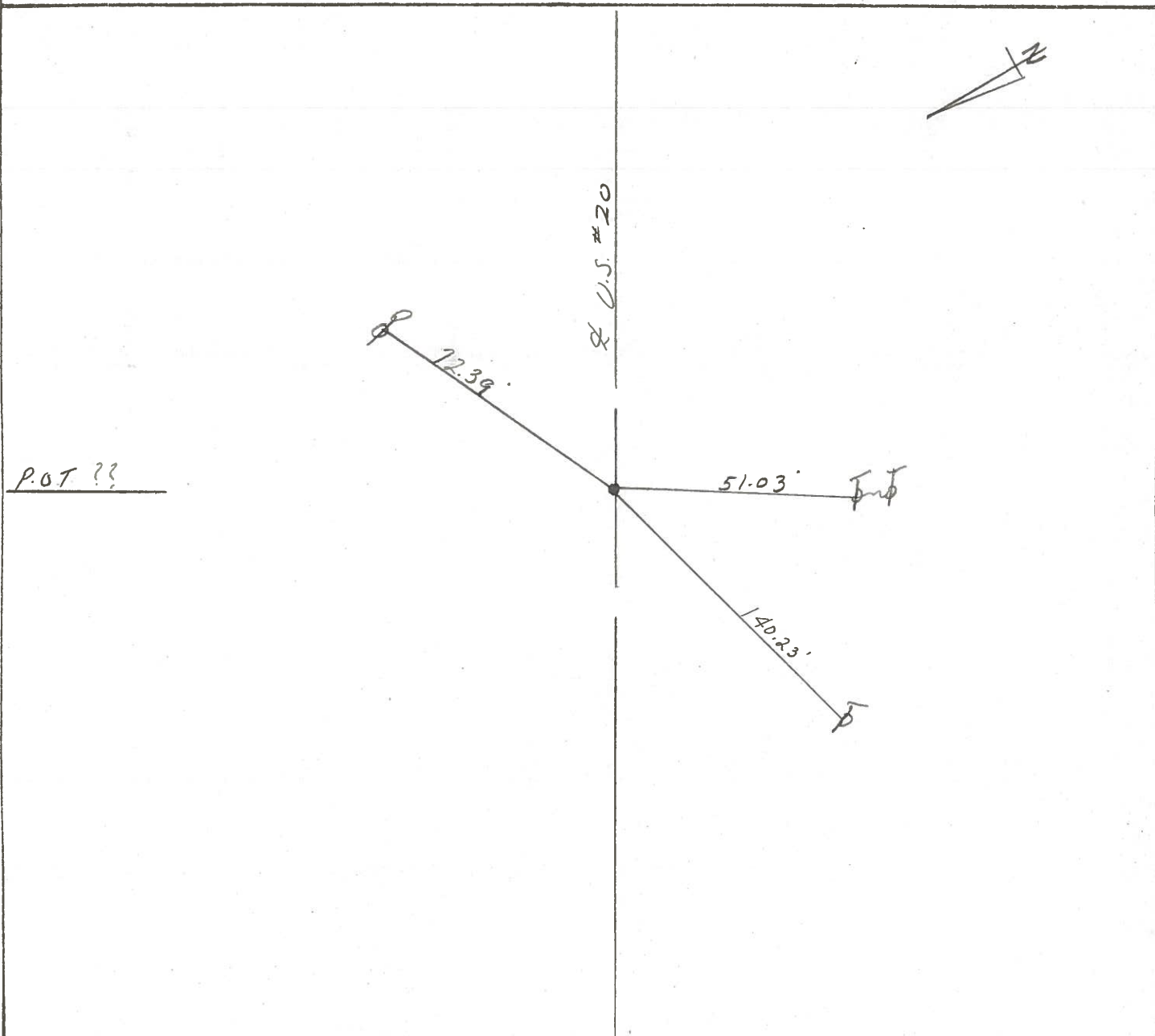
LEFT - Q PAV'T. - RIGHT 13.5 FT. & PAVT

TO EDGE PAVEMENT

S.L.M. 1.982 78+27 L

4A

85	88	89	91
20		90	
ROAD		TRACTS	
86	87	90	91



PERSONNEL TITLE PERSONNEL TITLE

COUNTY Sandusky

DATE Aug 25, 1974

Tolson  
Bracata  
Gancarz

S. R. U. S. 20

WEATHER \_\_\_\_\_

SEC. \_\_\_\_\_

TEMP. \_\_\_\_\_

DESCRIPTION Ref. Mow. U.S. 20 (Sandusky Co.)

JOB NO. \_\_\_\_\_

LEFT CENTER LINE RIGHT

OK  
7-9-74

OK  
7-9-74

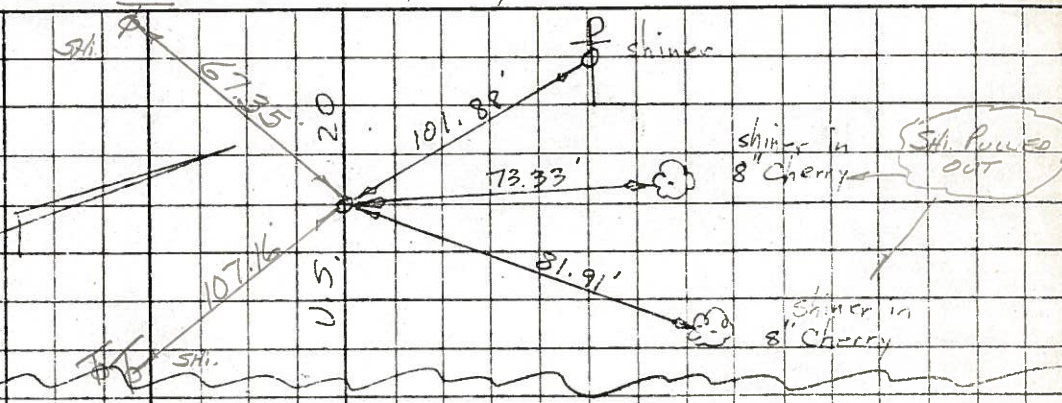
OK  
7-9-74

OK  
7-9-74

4C

Sta. 104+24.81

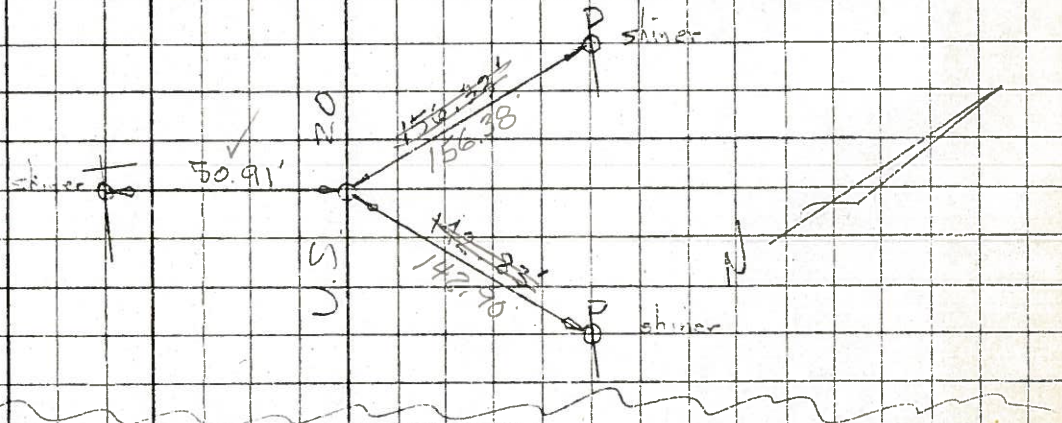
Set P.K. nail  
in old Hub  
SET BOAT SPK  
10-9-74



4B

Sta. 78+21.61

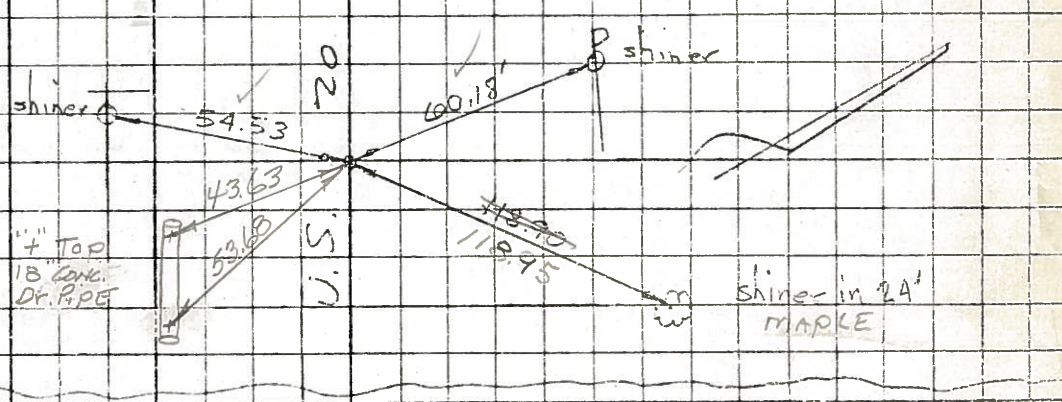
Set P.K. nail in old Hub  
FD P.K. 2" DEEP  
SET BOAT SPK  
10-9-74



4K

Sta. 71+65.65

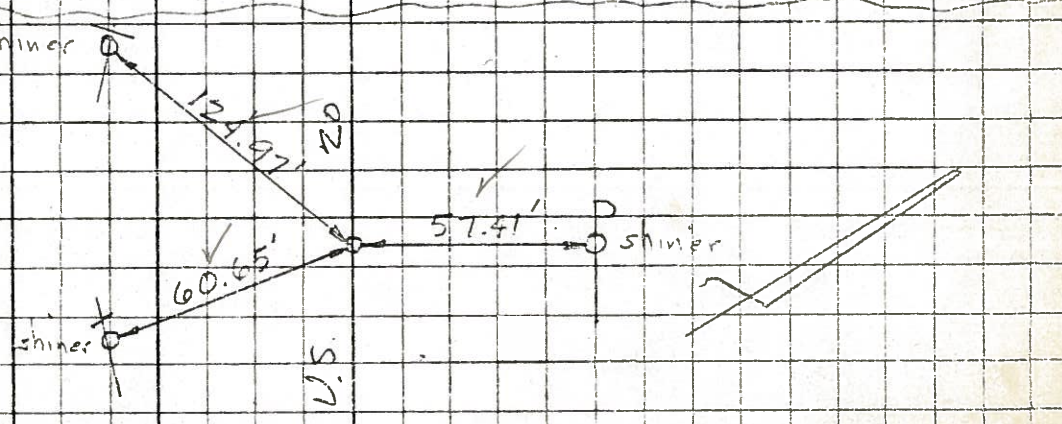
FD Nail in ribbon road  
SET BOAT SPK  
10-9-74



4

Sta. 68+66.99

FD Tacked Hub  
SET BOAT SPK  
10-9-74



TITLE PERSONNEL TITLE

COUNTY Sandusky DATE 2/6/63

S. R. 20 WEATHER

SEC. 20-Woodville Twp TEMP.

DESCRIPTION LEFT CENTER LINE RIGHT JOB NO.

Supposed to be corr. 17m  
But no ties

R.T. 91

R.T. 92

R.T. 89

R.T. 90

Stone Found

91+90.60  
P.O.T. Δ = 0° 00'

R.T. 88

R.T. 87

R.T. 85

R.T. 86

2483.10'

61° 45'

2836.37'

Hub & Ties

Δ = 0° 14' Lt.

56+33.67

Ties

