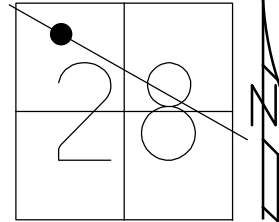


O.D.O.T. DISTRICT 2 SURVEY OFFICE (USE ONLY)

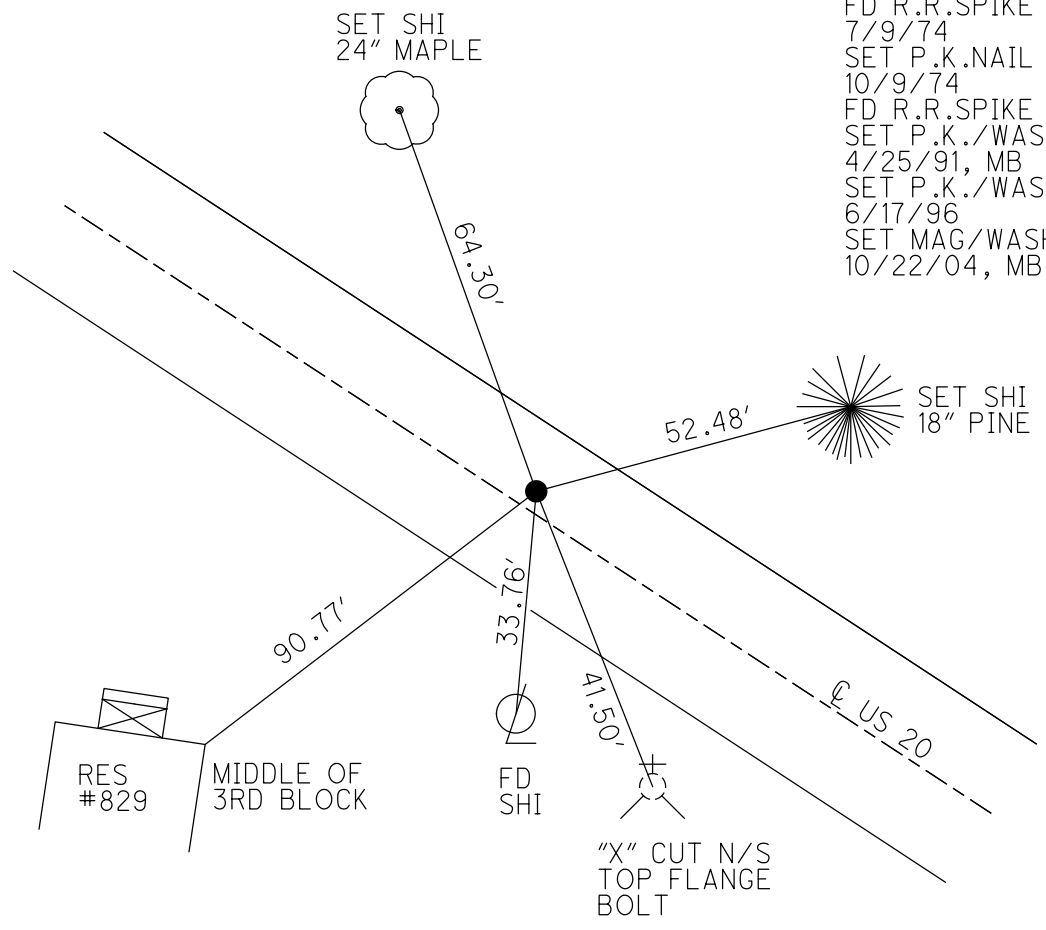
PERSONNEL \_\_\_\_\_ REFERENCE NO. 5 A SHEET 9 OF 20  
 NOTES BARNHISEL DATE 3/30/04 ROUTE US 20  
 H.C. NUHFER WEATHER RAIN COUNTY SANDUSKY  
 R.C. HUSS TEMP. 50°F TOWNSHIP WOODVILLE  
           HOOVER SECTION 28  
 DWG BY AUBLE PID \_\_\_\_\_ T 6 N R 13 E

TYPE MONUMENT P.K./WASHER  
 ON SURFACE - ~~BELOW~~ ON \_\_\_\_\_  
 OFFSET ☉ PAVEMENT ON \_\_\_\_\_ LT : RT  
19.5' TO RT EDGE PAVEMENT  
 STATION: 133+92



HORZ. DATUM: \_\_\_\_\_ - \_\_\_\_\_ GEOID: \_\_\_\_\_ - \_\_\_\_\_  
 GRID: NORTHING: \_\_\_\_\_ - \_\_\_\_\_ EASTING: \_\_\_\_\_ - \_\_\_\_\_

RECORD: P.I.  
 STA 133+85.01  
 $\Delta = 0^\circ 53' RT$   
 FD R.R.SPIKE  
 7/9/74  
 SET P.K.NAIL  
 10/9/74  
 FD R.R.SPIKE  
 SET P.K./WASHER  
 4/25/91, MB  
 SET P.K./WASHER  
 6/17/96  
 SET MAG/WASHER  
 10/22/04, MB



# O.D.O.T. DISTRICT 2 SURVEY OFFICE

PERSONNEL

REFERENCE NO. I

SHEET 9 OF 18

NOTES BARNISEL

H.C. NURFER

R.C. HUSS - DRAWING

HOOVER

DATE 03/30/04

WEATHER RAIN

TEMP. +50°

ROUTE U.S. 20

COUNTY SANDUSKY

TOWNSHIP WOODVILLE

SECTION 28

T 6 N R 13 E

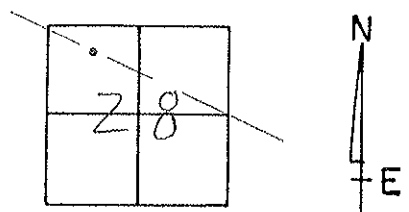
TYPE MONUMENT P.R. / WASHER

ON SURFACE - BELOW SURFACE

LEFT- & PAV'T. - RIGHT ON &

19.5' TO RT. EDGE PAVEMENT

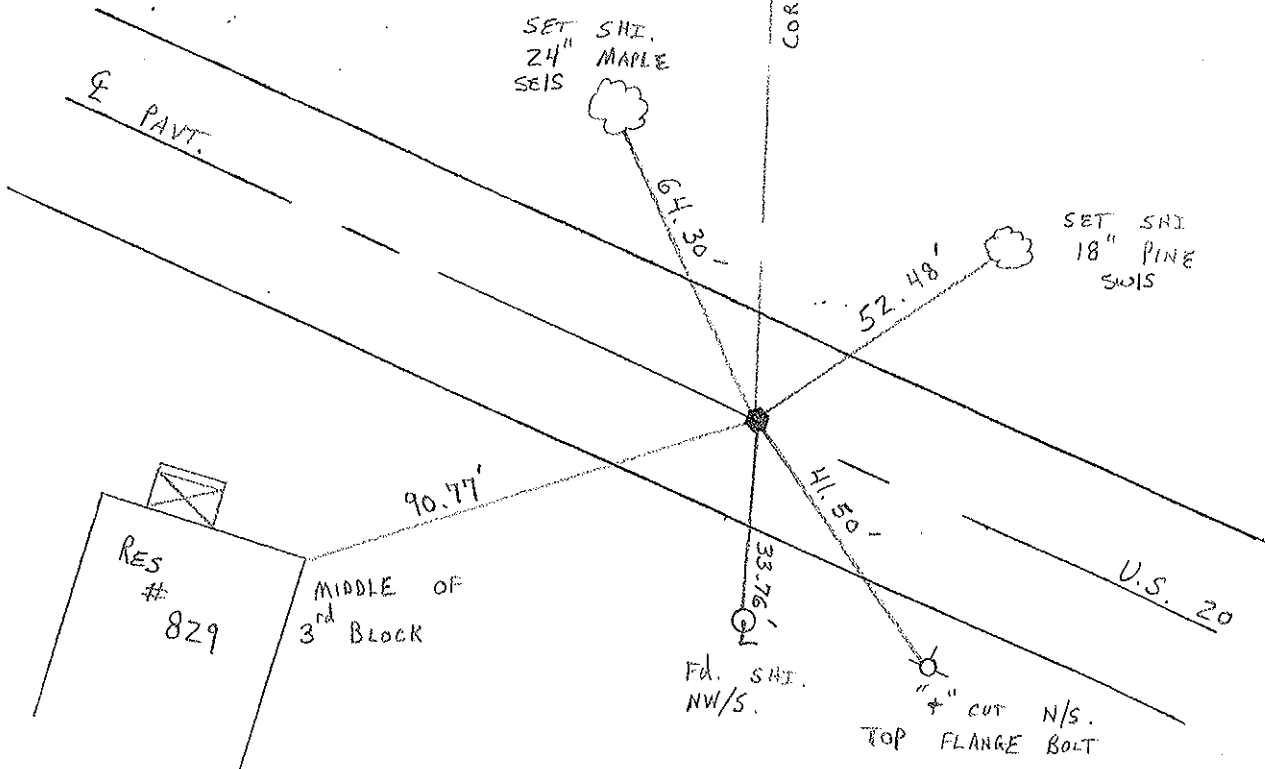
S.L.M. 133+92



RECORD: P.I. STA. 133+85.01  
 $\Delta = 0^\circ - 53'$  RT.

RESET MAR/WASHER  
 10/22/04  
 M.B.

WOODVILLE  
CORP. LINE



# O.D.O.T. DISTRICT 2 SURVEY OFFICE

PERSONNEL

REFERENCE NO. \_\_\_\_\_

SHEET 1 OF \_\_\_\_\_

NOTES HOFFMAN

H.C. BARNHISEL

DATE 4-25-91

ROUTE US 20

R.C. \_\_\_\_\_

WEATHER CLOUDY

COUNTY SANDUSKY

TEMP. 60°

TOWNSHIP WOODVILLE

SECTION 28

T. 6 N R. 13 E

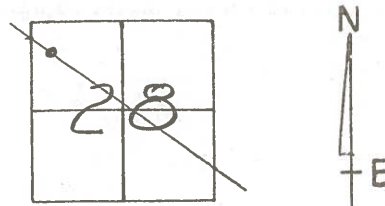
TYPE MONUMENT R.R. SPIKE Set P.K. / WASHER ON SURFACE

~~ON SURFACE - BELOW~~ 5 1/4"

LEFT - C. PAV'T. - RIGHT 1.2'

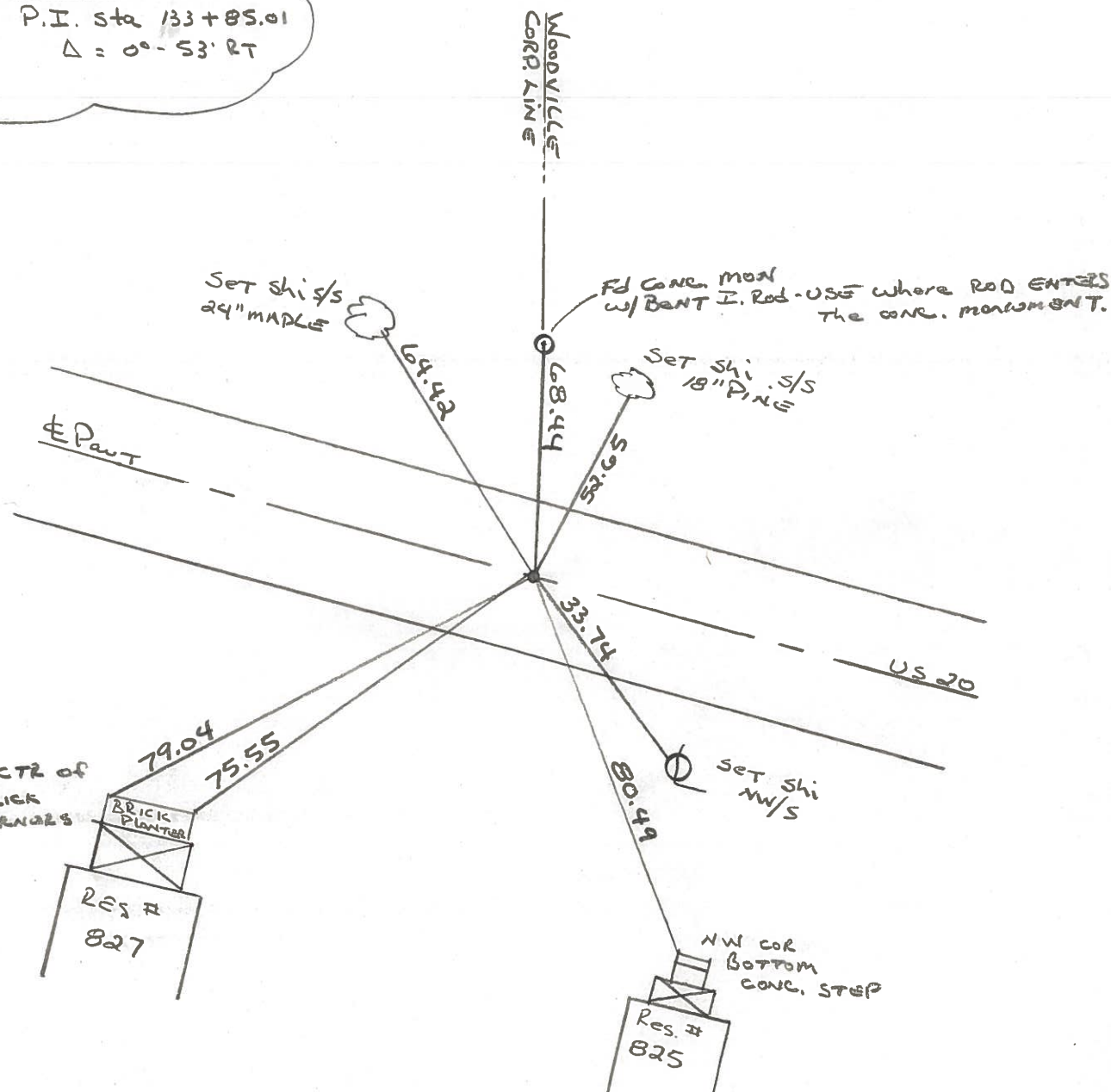
22.2 TO LT. EDGE PAVEMENT

S.L.M. 134+43.32



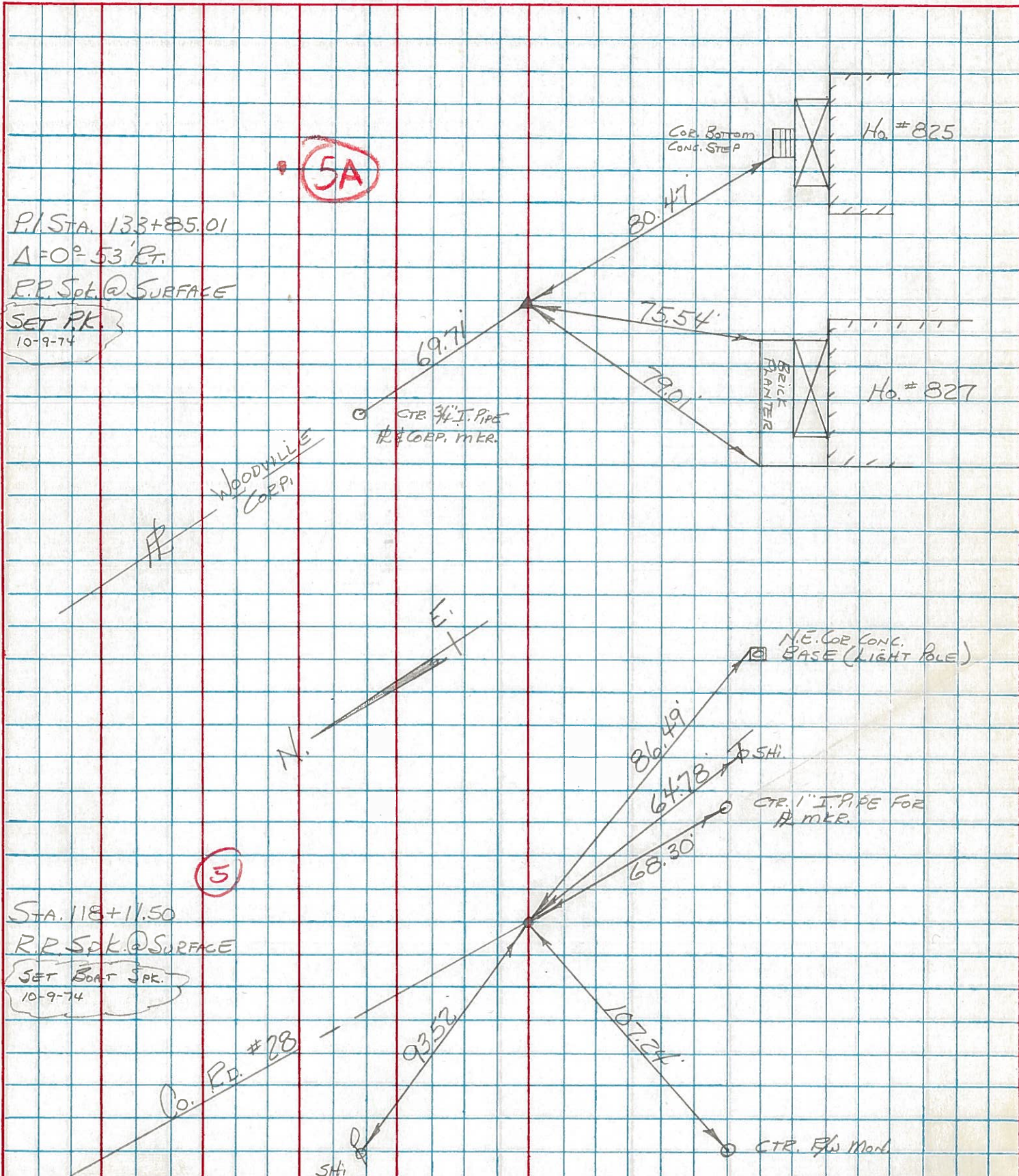
5A

RECORD: P.I. Sta 133+85.01  
 $\Delta = 0^\circ - 53' RT$



PERSONNEL	TITLE	PERSONNEL	TITLE	COUNTY	DATE
BURNSIDE				SANDUSKY	7-9-74
SMITH				S. R. U.S. 20	WEATHER CLEAR
BOWERS				SEC. WOODVILLE	TEMP. 79°
KIJOWSKI					

DESCRIPTION CONTROL TIES LEFT CENTER LINE RIGHT JOB NO. \_\_\_\_\_



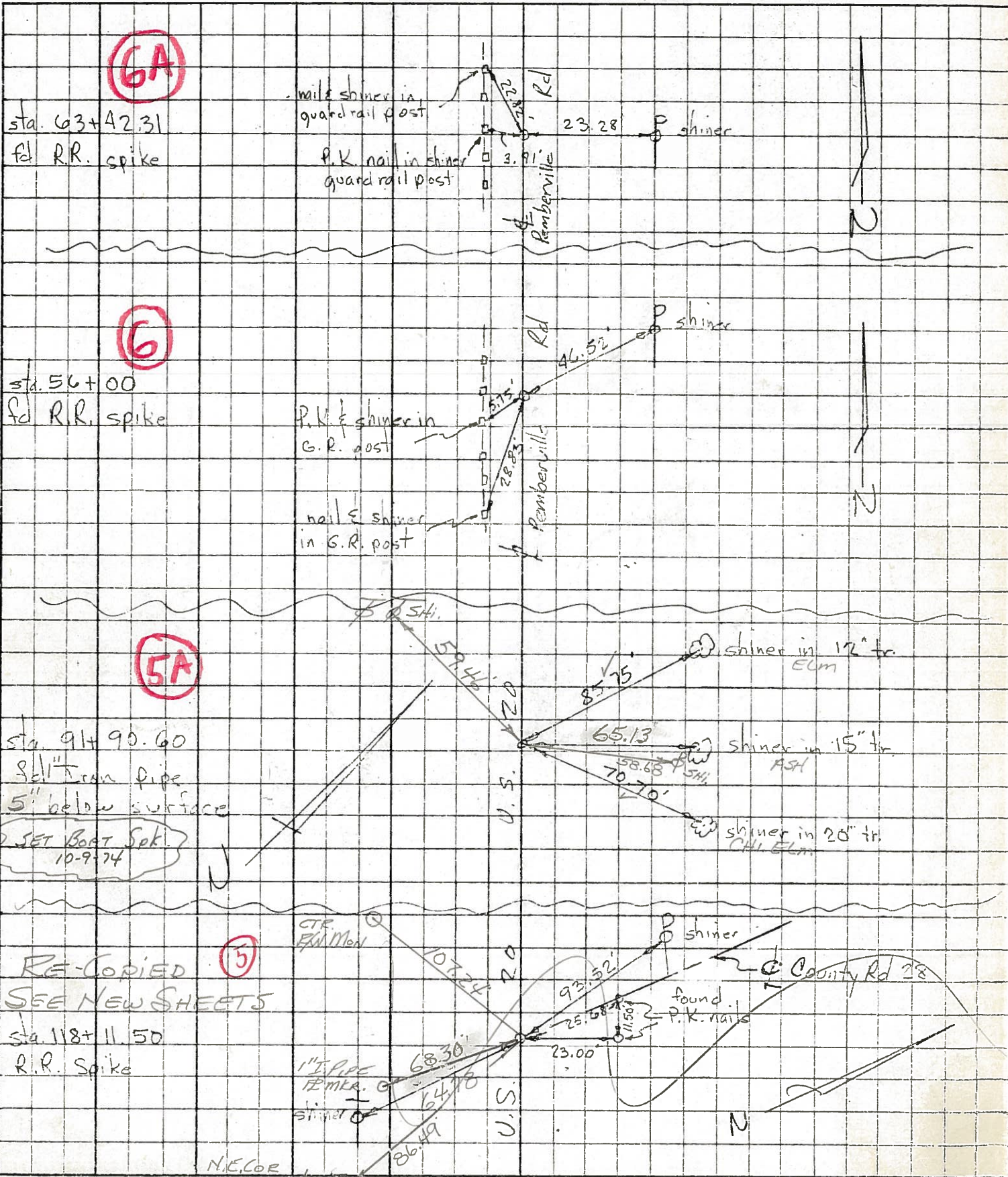
PERSONNEL	TITLE	PERSONNEL	TITLE
Tomsic			
Nanyo			
Granata			
Banarz			

COUNTY Sandusky DATE Aug. 28, 1972

S. R. U.S. 20 WEATHER \_\_\_\_\_

SEC. \_\_\_\_\_ TEMP. \_\_\_\_\_

DESCRIPTION Ret. Mon. U.S. 20 (SAND. Co.) JOB NO. \_\_\_\_\_



OK  
-9-74

RE-COPIED SEE NEW SHEETS

Sta. 118+11.50  
R.R. Spike

NECOR  
Can Race & 10