

O.D.O.T. DISTRICT 2 SURVEY OFFICE (USE ONLY)

PERSONNEL

REFERENCE NO. 6

SHEET 10 OF 20

NOTES BARNHEISEL

DATE 3/30/04

ROUTE US 20

H.C. NUHFER

WEATHER RAIN

COUNTY SANDUSKY

R.C. HUSS

TEMP. 50°F

TOWNSHIP WOODVILLE

HOOKER

DWG BY AUBLE

PID _____

SECTION 28

T 6 N R 13 E

TYPE MONUMENT P.K.NAIL

~~ON SURFACE~~ - BELOW 4"

OFFSET CL PAVEMENT ON LT : RT

22.1' TO LT EDGE PAVEMENT

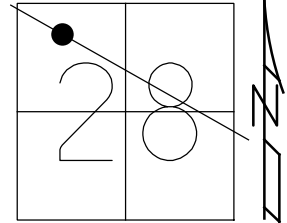
STATION: 139+42

HORIZ.DATUM: _____

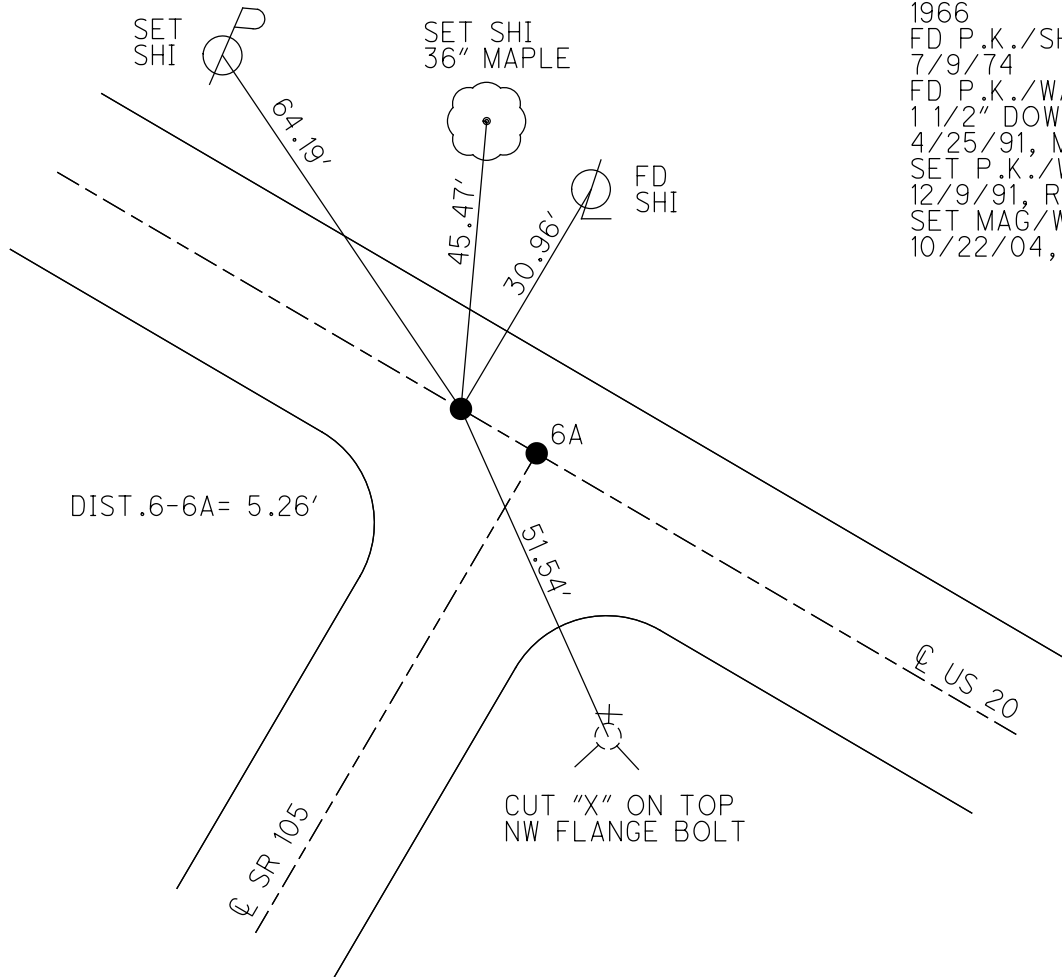
GEOID: _____

GRID: NORTHING: _____

EASTING: _____



RECORD:
 STA 139+34.75
 FD P.K.NAIL
 1966
 FD P.K./SHI
 7/9/74
 FD P.K./WASHER
 1 1/2" DOWN
 4/25/91, MB
 SET P.K./WASHER
 12/9/91, RC
 SET MAG/WASHER
 10/22/04, MB



O.D.O.T. DISTRICT 2 SURVEY OFFICE

PERSONNEL

REFERENCE NO. 5

SHEET 10 OF 18

NOTES BARNHISEL

H.C. NUHFER

R.C. HUSS - DRAWING

HOOVER

DATE 03/30/04

WEATHER RAIN

TEMP. +50°

ROUTE U.S. 20

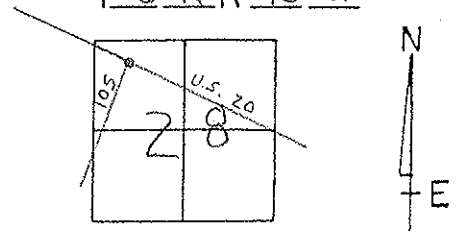
COUNTY SANDUSKY

TOWNSHIP WOODVILLE

SECTION 28

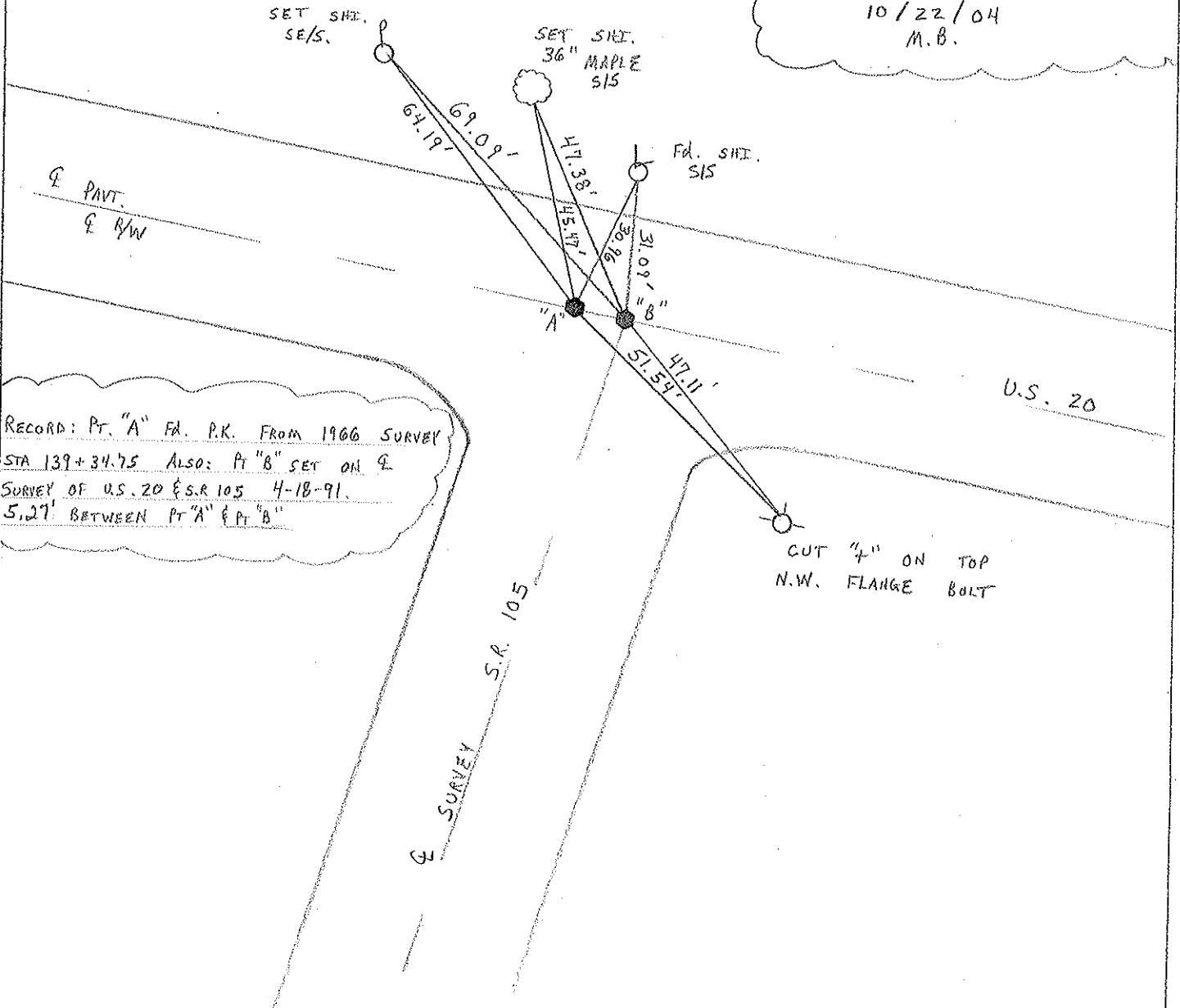
T 6 N R 13 E

	Pt. "A"	Pt. "B"
TYPE MONUMENT	P.K. NAIL	P.K./WASHER
ON SURFACE - BELOW	4" DOWN	2" DOWN
LEFT - & PAV'T - RIGHT	ON &	ON & BOTH
22.1' TO LT. CURB TO LT. EDGE PAVEMENT		
S.L.M.	139+42	139+47



DIST. BETWEEN = 5.26'

RESET MAG / WASHERS @ BOTH
10/22/04
M.B.



RECORD: Pt. "A" FD. P.K. FROM 1966 SURVEY
 STA 139+34.75 ALSO: Pt "B" SET ON &
 SURVEY OF U.S. 20 & S.R. 105 4-18-91.
 5.27' BETWEEN Pt "A" & Pt "B"

O.D.O.T. DISTRICT 2 SURVEY OFFICE

PERSONNEL

REFERENCE NO. _____

SHEET 2 OF _____

NOTES HOFFMAN

H.C. BARNHISEL

DATE 4-25-91

ROUTE US 20

R.C. _____

WEATHER CLOUDY

COUNTY SANDUSKY

TEMP. 60°

TOWNSHIP KLOORVILLE

SECTION 28

T. 6 N. R. 13 E

"A"

"B"

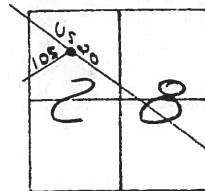
TYPE MONUMENT Fd P.K. / Set P.K./WASHER

ON SURFACE - BELOW 1 1/2" down / yes

~~LEFT - & PAV'T. - RIGHT~~ yes / yes

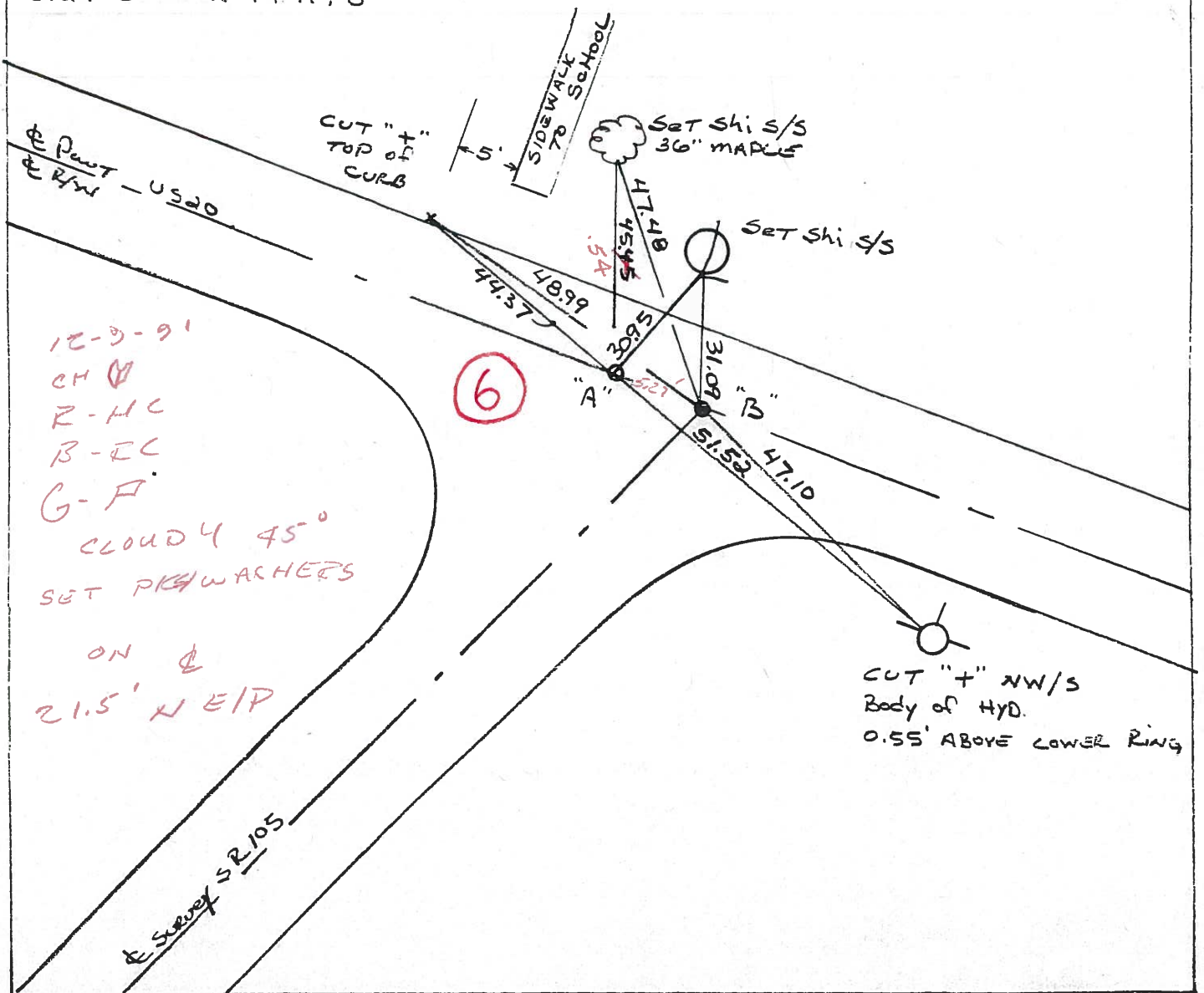
22.2 TO LT. EDGE PAVEMENT

S.L.M. Pt. "B" = 139+98.47



RECORD: PT. "A" Fd P.K. FROM 1966 SURVEY, STA 139+34.75

ALSO: PT. "B" SET ON E SURVEY OF US 20 & SR 105 4-18-91
5.27' BETWEEN PT. A & B



O.D.O.T. DISTRICT 2 SURVEY OFFICE

PERSONNEL _____

REFERENCE NO. _____

SHEET 2 OF _____

NOTES HOFFMAN

H.C. BARNHISEL

DATE 4-25-91

ROUTE US 20

R.C. _____

WEATHER CLOUDY

COUNTY SANDUSKY

TEMP. 60°

TOWNSHIP KLODVILLE

SECTION 28

T. 6 N. R. 13 E

"A"

"B"

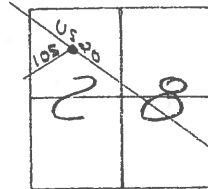
TYPE MONUMENT FD P.K. / Set P.K./WASHER

ON SURFACE - BELOW 1 1/2" down / yes

LEFT - & PAV'T. - RIGHT yes / yes

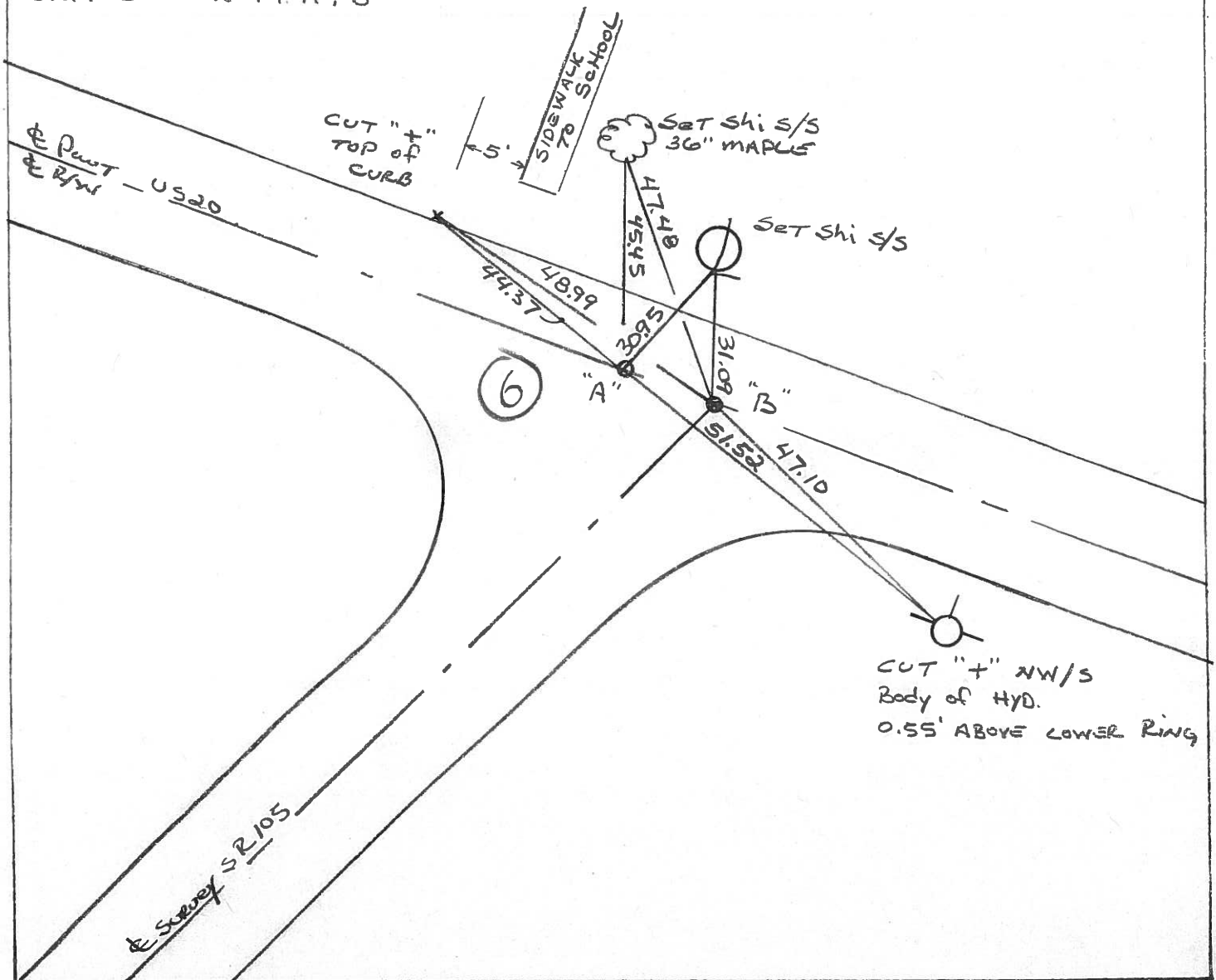
22.2 TO LT. EDGE PAVEMENT

S.L.M. PT. "B" = 139+98.47



RECORD: PT. "A" FD P.K. FROM 1966 SURVEY, STA 139+34.75

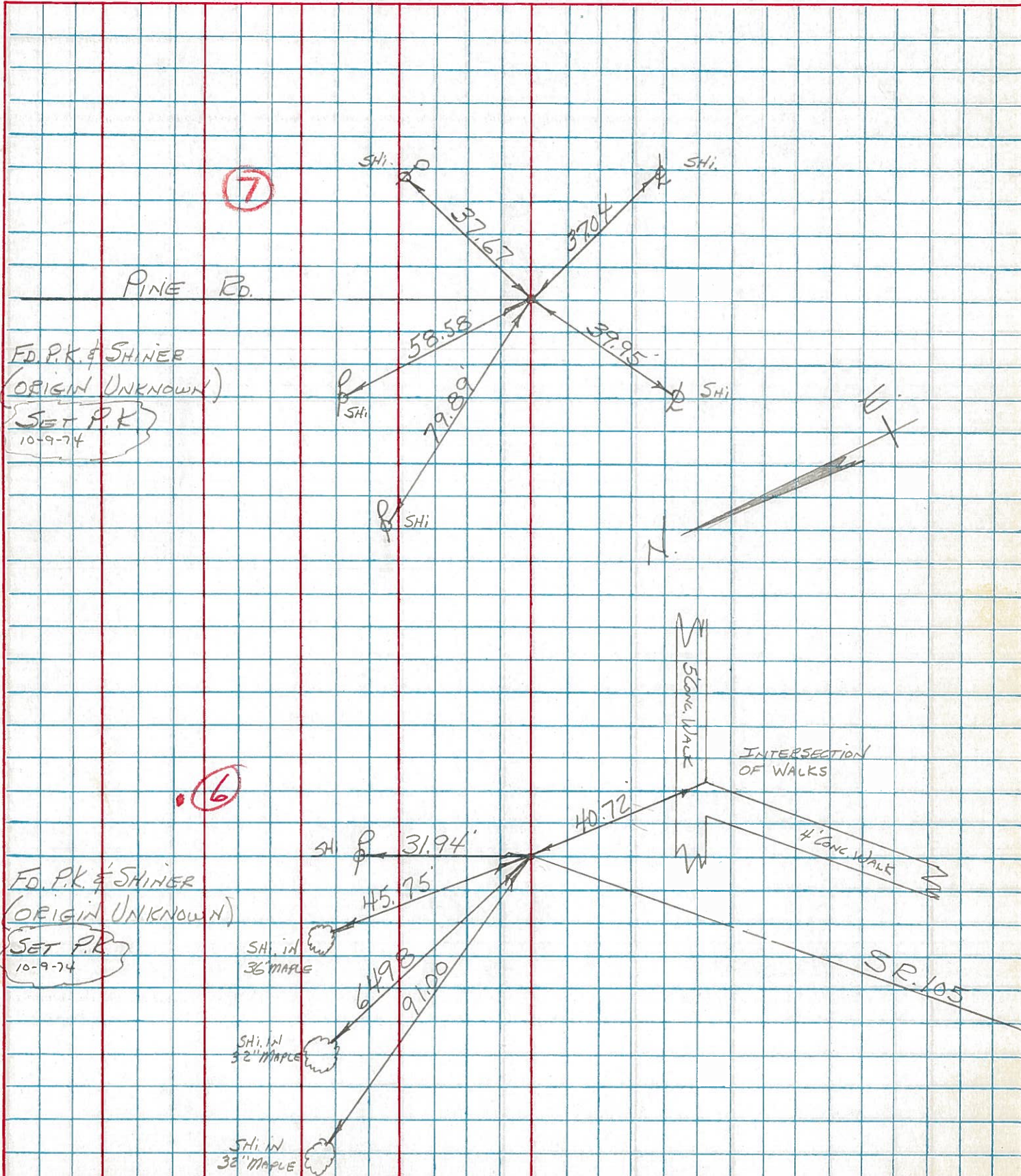
ALSO: PT. "B" SET ON E SURVEY OF US 20 & SR 105 4-18-91
5.27' BETWEEN PT. A & B



PERSONNEL	TITLE	PERSONNEL	TITLE	COUNTY	DATE	WEATHER	TEMP.
BURNSIDE				SANDUSKY	7-9-74	CLEAR	+92°
SMITH				S. R. U.S. 20			
BOWERS				SEC. WOODVILLE CORP.			
KIOWSKI							

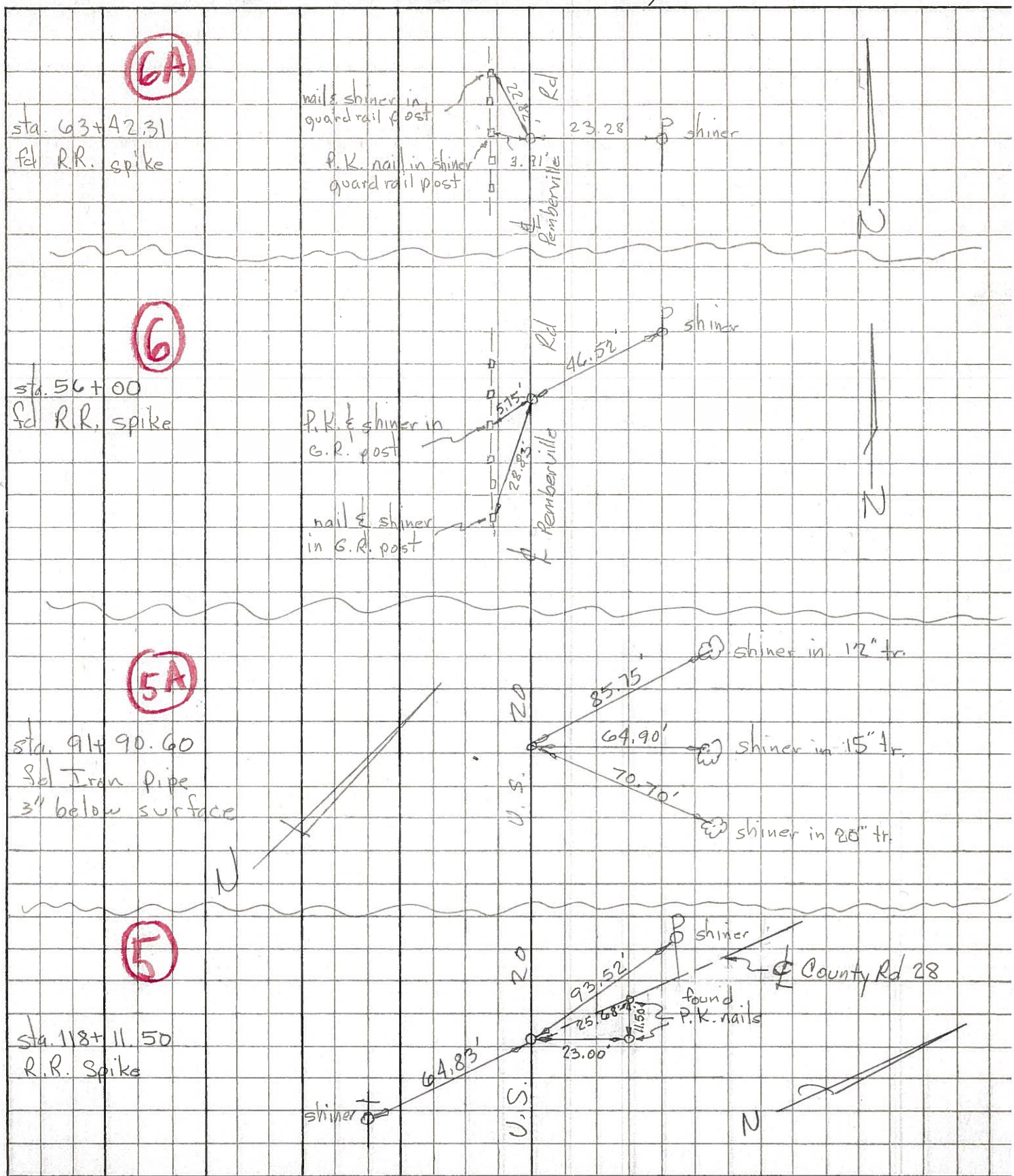
DESCRIPTION CONTROL TIES JOB NO. _____

LEFT CENTER LINE RIGHT



PERSONNEL	TITLE	PERSONNEL	TITLE	COUNTY	DATE	WEATHER	TEMP.
Tomsic				Sandusky	Aug. 28, 1972		
Vanyo				S. R. → U.S. 20			
Granata				SEC. Woodville Twp			
Gancarz							

DESCRIPTION Ret. Mon. U.S. 20 (SAND. Co.) JOB NO. _____



PERSONNEL	TITLE	PERSONNEL	TITLE	COUNTY	DATE	WEATHER	TEMP
Schneider		Potts		Sandusky	9-21-66	Partly-Cloudy	60°
Masser				S. R. U.S. # 20			
Barbour				SEC. 2.24-3.70			
Redding							

DESCRIPTION starts LEFT CENTER LINE RIGHT JOB NO.

