

O.D.O.T. DISTRICT 2 SURVEY OFFICE (USE ONLY)

PERSONNEL

REFERENCE NO. 6 A

SHEET 11 OF 20

NOTES BARNHEISEL

DATE 3/30/04

ROUTE US 20

H.C. NUHFER

WEATHER RAIN

COUNTY SANDUSKY

R.C. HUSS

TEMP. 50°F

TOWNSHIP WOODVILLE

HOOVER

SECTION 28

DWG BY AUBLE

PID \_\_\_\_\_

T 6 N R 13 E

TYPE MONUMENT P.K./WASHER

~~ON SURFACE~~ - BELOW 2"

OFFSET Q PAVEMENT ON LT : RT

22.1' TO LT EDGE PAVEMENT

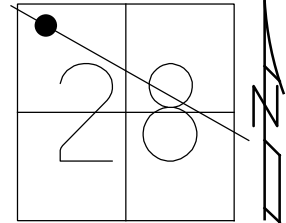
STATION: 139+47

HORIZ.DATUM: \_\_\_\_\_

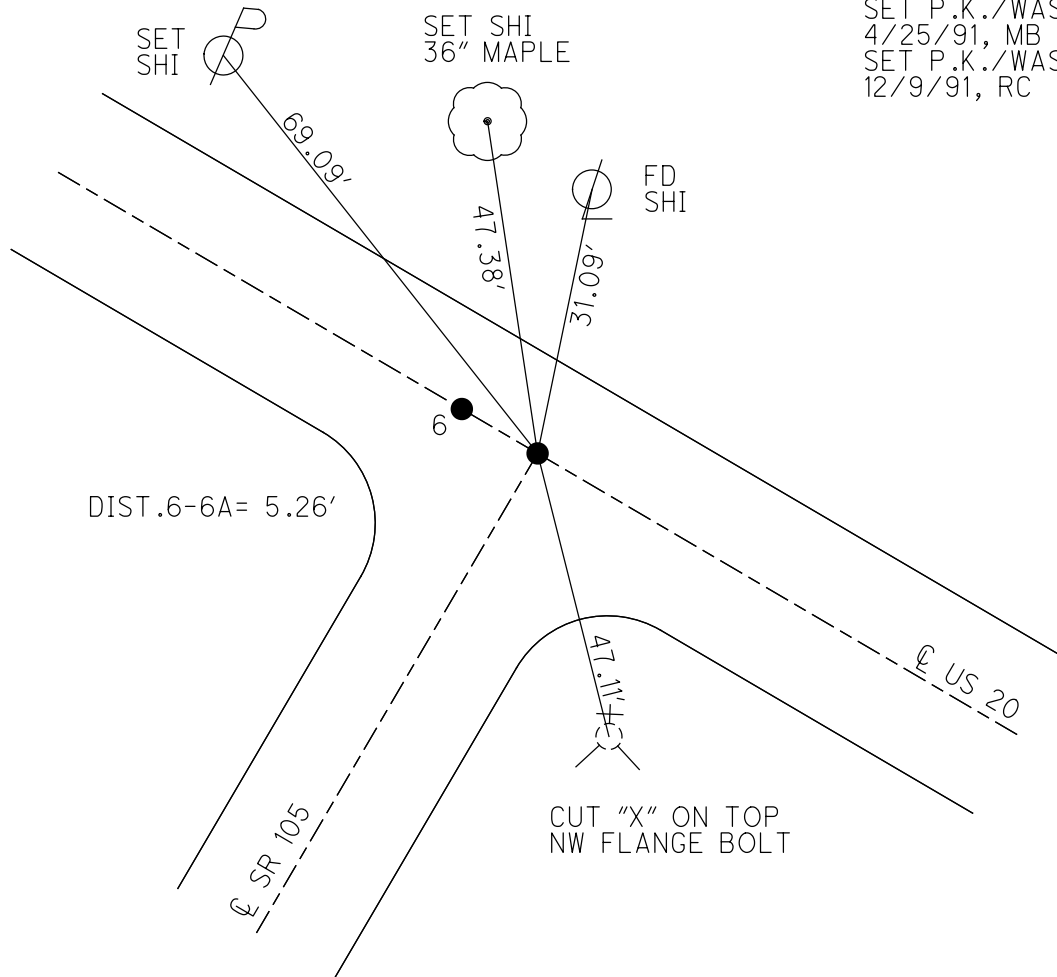
GEOID: \_\_\_\_\_

GRID: NORTHING: \_\_\_\_\_

EASTING: \_\_\_\_\_



RECORD:  
 FD R.R.SPIKE  
 1966  
 SET P.K./WASHER  
 4/25/91, MB  
 SET P.K./WASHER  
 12/9/91, RC



# O.D.O.T. DISTRICT 2 SURVEY OFFICE

PERSONNEL \_\_\_\_\_

REFERENCE NO. 12 SHEET 2 OF \_\_\_\_\_

NOTES HOFFMAN

H.C. BARNHISEL

R.C. \_\_\_\_\_

DATE 4-25-91

WEATHER CLOUDY

TEMP. 60°

ROUTE US 20

COUNTY SANDUSKY

TOWNSHIP Woodville

SECTION 28

T. & R. 13 E

"A" "B"

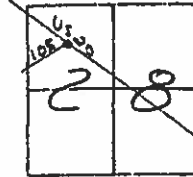
TYPE MONUMENT Fl P.K. / Set P.K./washer

ON SURFACE - BELOW 1 1/2" down / yes

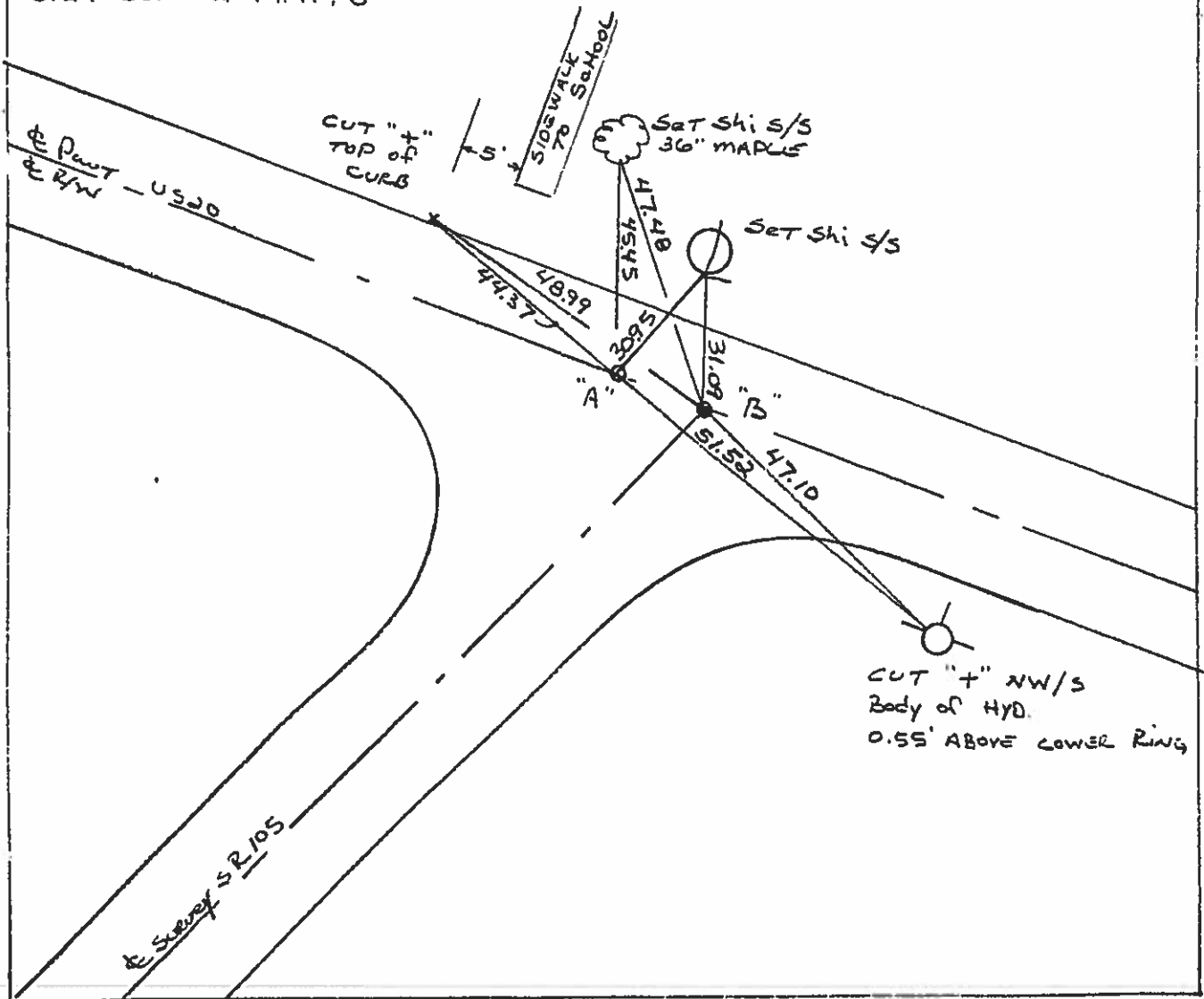
LEFT - & PAV'T. - RIGHT yes / yes

22.2 TO LT. EDGE PAVEMENT

S.L.M. Pt. "B" = 139+98.47



Record: Pt. "A" Fl P.K. FROM 1966 SURVEY, STA 139+34.75  
 ALSO: Pt. "B" Set on & survey of US 20 & SR 105 4-18-91  
 5.27' BETWEEN Pt. A & B



# O.D.O.T. DISTRICT 2 SURVEY OFFICE

PERSONNEL \_\_\_\_\_

REFERENCE NO. \_\_\_\_\_

SHEET 2 OF \_\_\_\_\_

NOTES HOFFMAN

H.C. BARNHISEL

DATE 4-25-91

ROUTE US 20

R.C. \_\_\_\_\_

WEATHER CLOUDY

COUNTY SANDUSKY

TEMP. 60°

TOWNSHIP WOODVILLE

SECTION 28

T. 6 N. 13 E

"A"

"B"

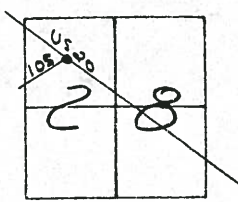
TYPE MONUMENT FL P.K. / Set P.K./WASHER

ON SURFACE - BELOW 1 1/2" down / yes

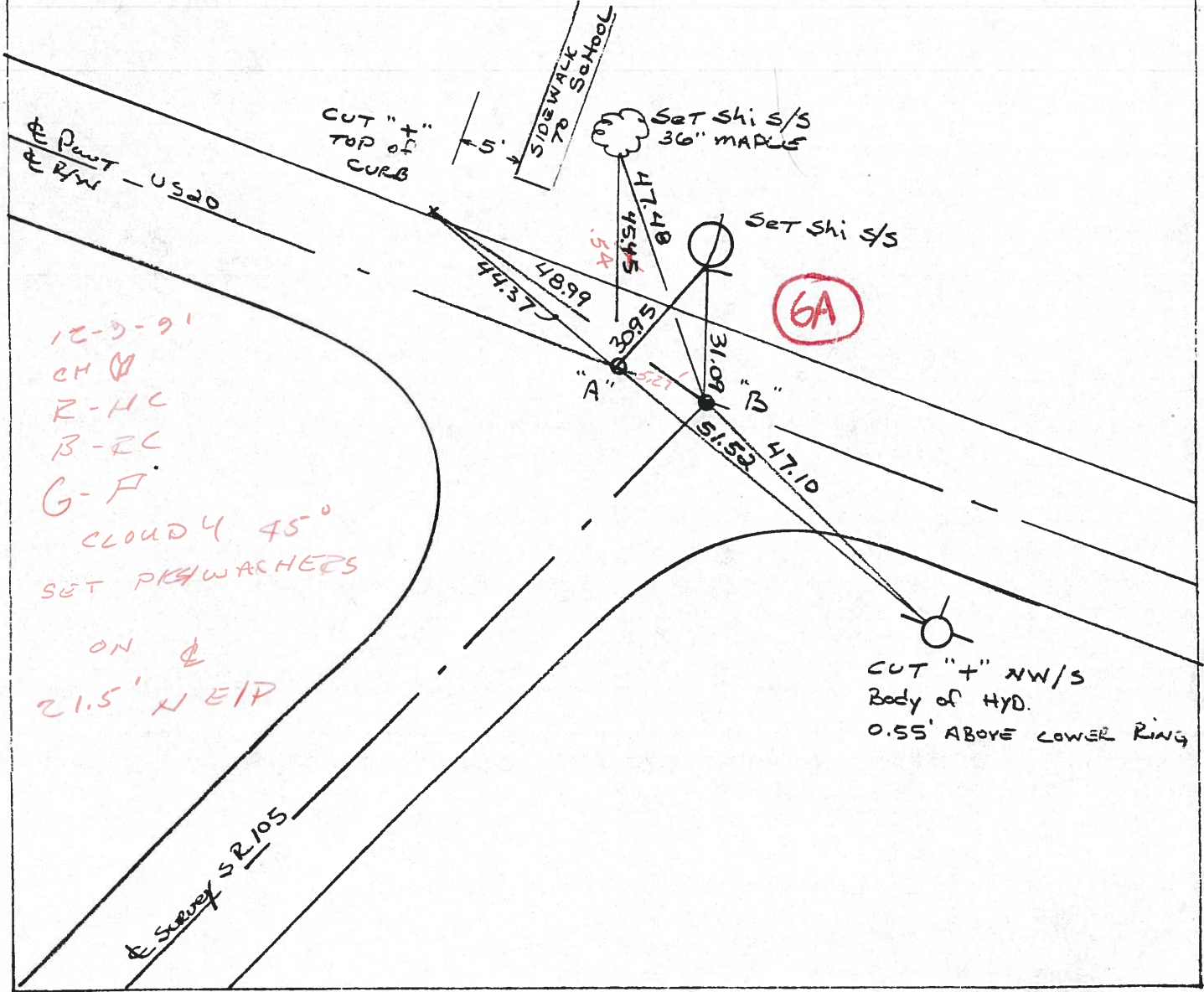
~~LEFT - & PAV'T. - RIGHT~~ yes / yes

22.2 TO LT. EDGE PAVEMENT

S.L.M. Pt. "B" = 139+98.47



Record: PT. "A" FL P.K. FROM 1966 SURVEY, STA 139+34.75  
 ALSO: PT. "B" SET ON E SURVEY OF US 20 & SR 105 4-18-91  
 5.27' BETWEEN PT. A & B



# O.D.O.T. DISTRICT 2 SURVEY OFFICE

PERSONNEL

REFERENCE NO. \_\_\_\_\_

SHEET 2 OF \_\_\_\_\_

NOTES HOFFMAN

H.C. BARNHISEL

DATE 4-25-91

ROUTE US 20

R.C. \_\_\_\_\_

WEATHER CLOUDY

COUNTY SANDUSKY

TEMP. 60°

TOWNSHIP XLODVILLE

SECTION 28

T6 NR 13 E

"A"

"B"

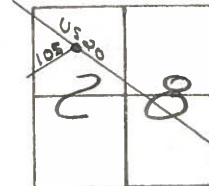
TYPE MONUMENT Fd P.K. / Set P.K./WASHER

ON SURFACE - BELOW 1 1/2" down / yes

LEFT - & PAV'T. - RIGHT yes / yes

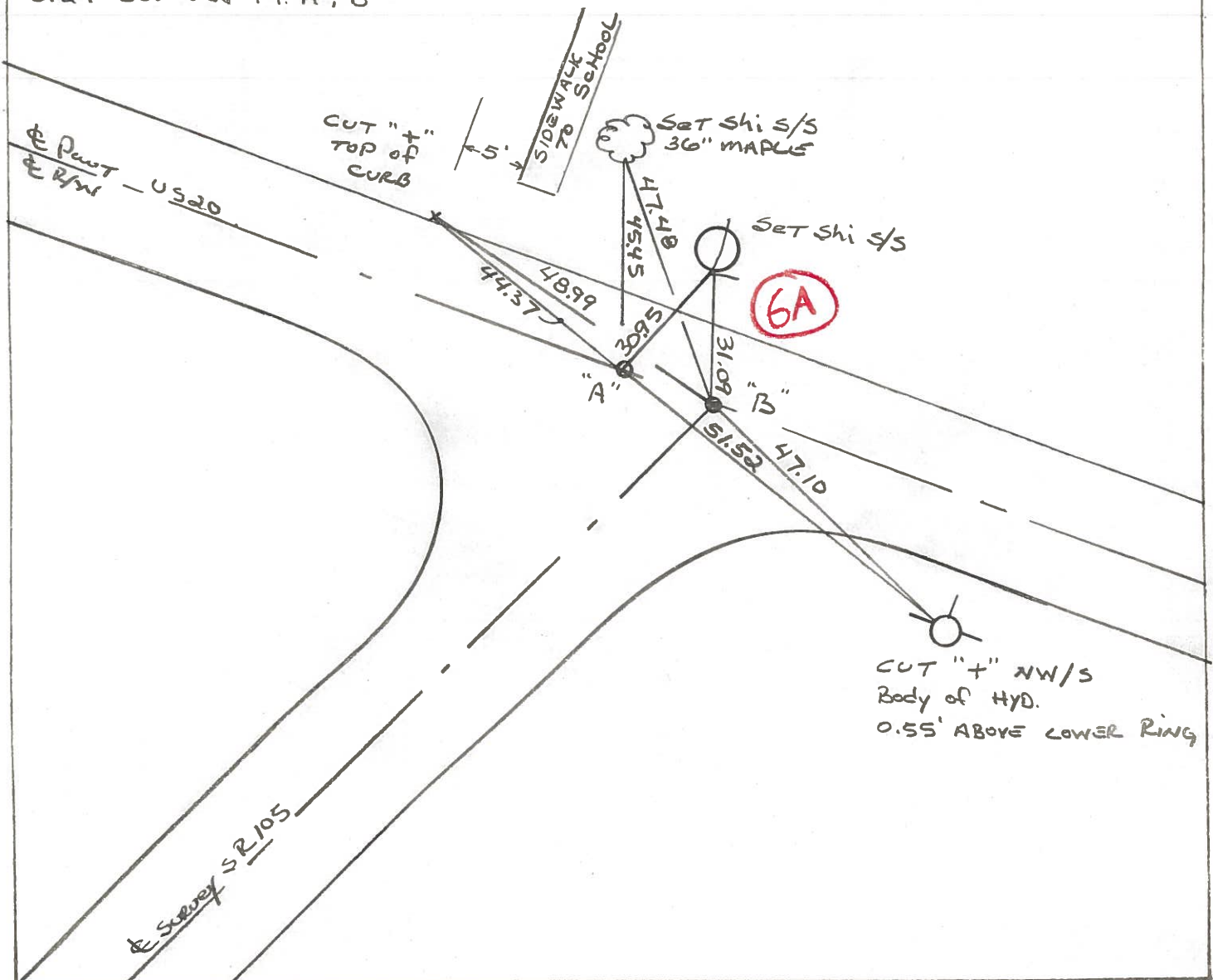
22.2 TO LT. EDGE PAVEMENT

S.L.M. Pt. "B" = 139+98.47



RECORD: PT. "A" Fd P.K. FROM 1966 SURVEY, STA 139+34.75

ALSO: PT. "B" SET ON E SURVEY OF US 20 & SR 105 4-18-91  
5.27' BETWEEN PT. A & B



PERSONNEL TITLE PERSONNEL TITLE  
 Tomsic \_\_\_\_\_  
 Vanyo \_\_\_\_\_  
 Granata \_\_\_\_\_  
 Bancarz \_\_\_\_\_

COUNTY Sandusky DATE Aug, 28, 1992  
 S. R. U.S. 20 WEATHER \_\_\_\_\_  
 SEC. Woodville Twp TEMP. \_\_\_\_\_

DESCRIPTION Ret. Mon. U.S. 20 (SAND. Co.) JOB NO. \_\_\_\_\_  
 LEFT CENTER LINE RIGHT

