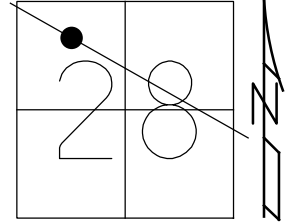


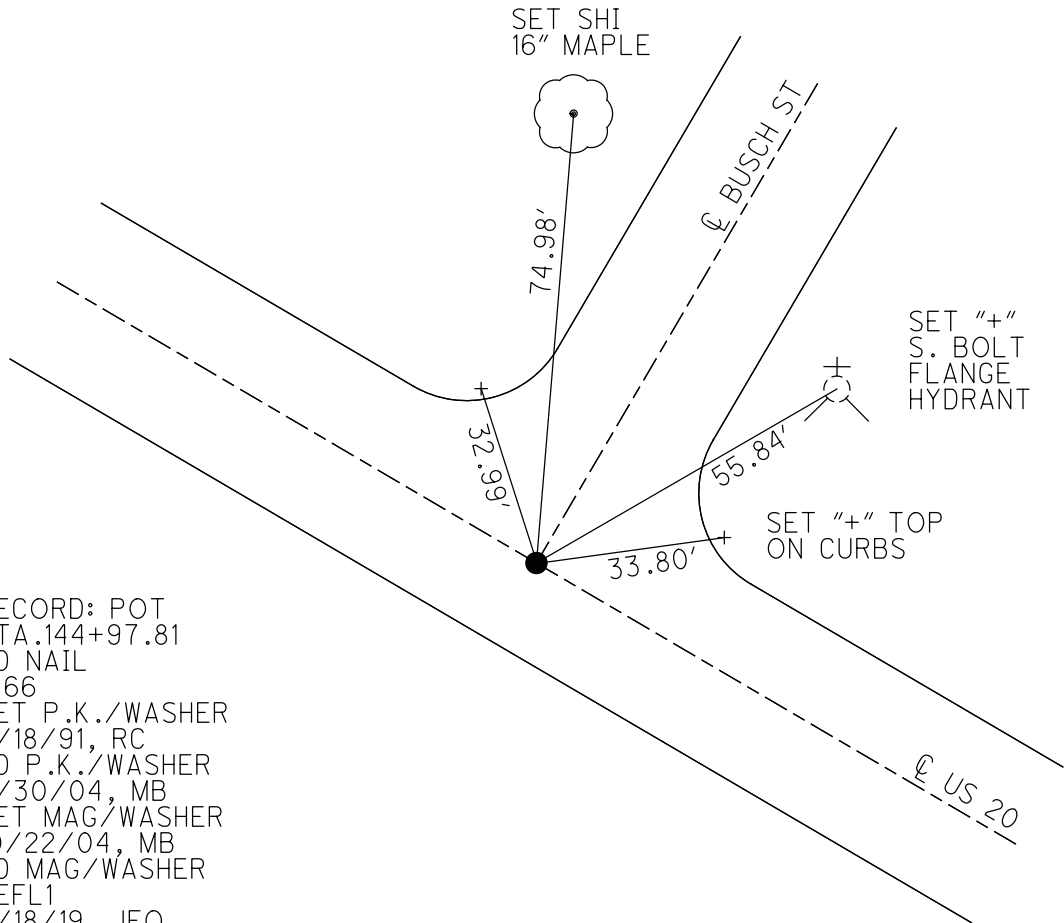
O.D.O.T. DISTRICT 2 SURVEY OFFICE (USE ONLY)

PERSONNEL _____ REFERENCE NO. 8 SHEET 13 OF 20
 NOTES MILLER DATE 6/18/19 ROUTE US 20
 H.C. O'DONNELL WEATHER SUNNY COUNTY SANDUSKY
 R.C. AUBLE TEMP. 66°F TOWNSHIP WOODVILLE
 RHOADES SECTION 28
 DWG BY AUBLE PID 95718 T 6 N R 13 E

TYPE MONUMENT MAG/WASHER
 ON SURFACE - ~~BELOW~~ ON _____
 OFFSET \odot PAVEMENT _____ ON _____ LT : RT
22.1' TO RT EDGE PAVEMENT
 STATION: 145+58.09



HORIZ.DATUM: NAD83 (2011) GEOID: 2012A
 GRID: NORTHING: 651895.637 EASTING: 1730410.471



RECORD: POT
 STA. 144+97.81
 FD NAIL
 1966
 SET P.K./WASHER
 4/18/91, RC
 FD P.K./WASHER
 3/30/04, MB
 SET MAG/WASHER
 10/22/04, MB
 FD MAG/WASHER
 REFL1
 6/18/19, JFO
 SET MAG/WASHER
 11/4/19, JFO

O.D.O.T. DISTRICT 2 SURVEY OFFICE

PERSONNEL

REFERENCE NO. L

SHEET 12 OF 18

NOTES Bavthiel

H.C. Nuhfer

R.C. Huss - Drawing

Hooker

DATE 03-30-04

WEATHER Rain

TEMP. 50° F

ROUTE US-20

COUNTY Sandusky

TOWNSHIP Woodville

SECTION 28

T. 6 N. R. 13 E.

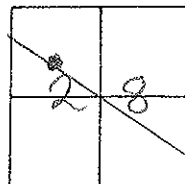
TYPE MONUMENT PK/W

~~ON SURFACE~~ - BELOW 2" below

~~LEFT~~ - PAV'T - RIGHT yes

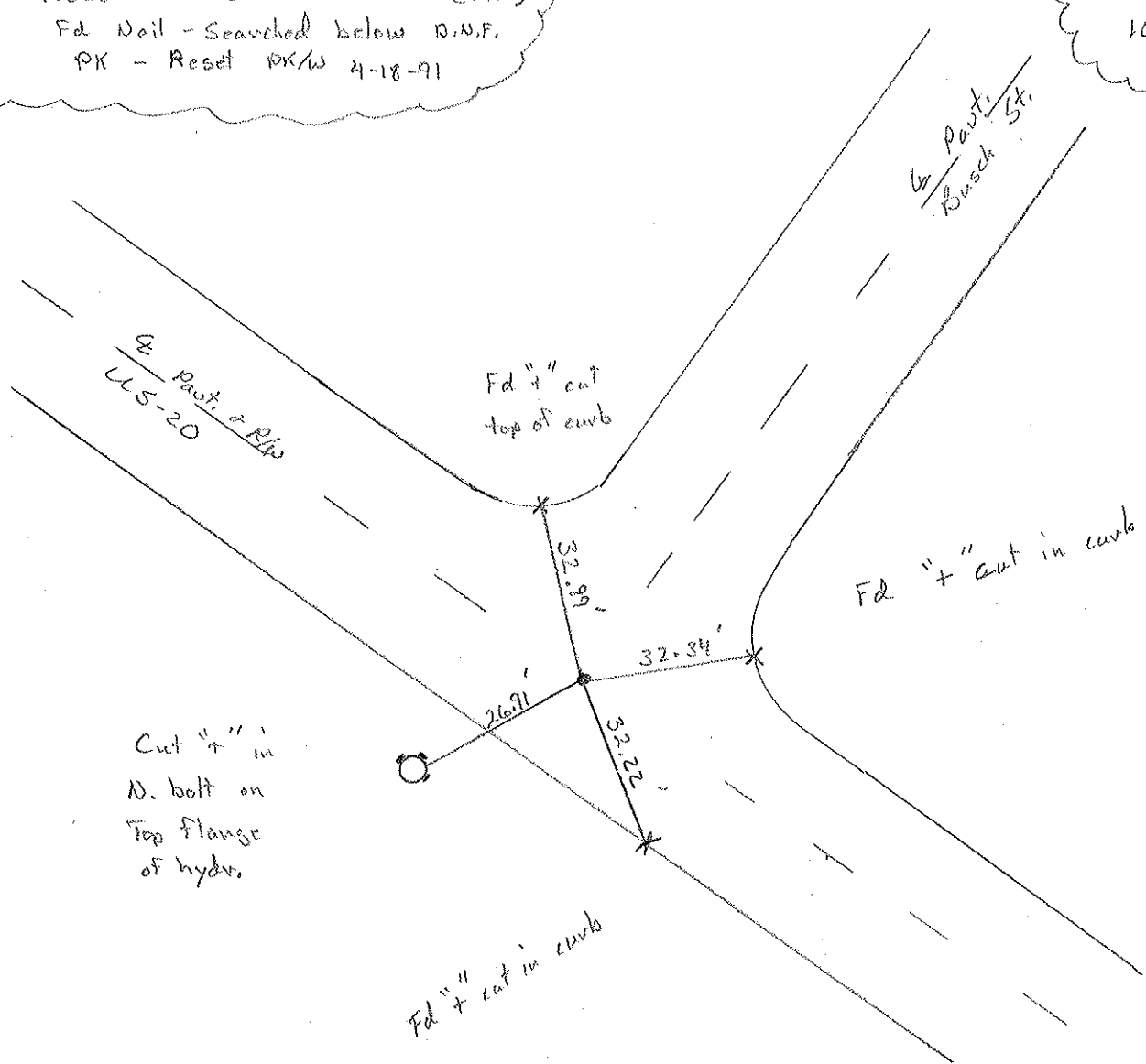
22.1 TO RT. EDGE PAVEMENT

S.L.M. 145+06



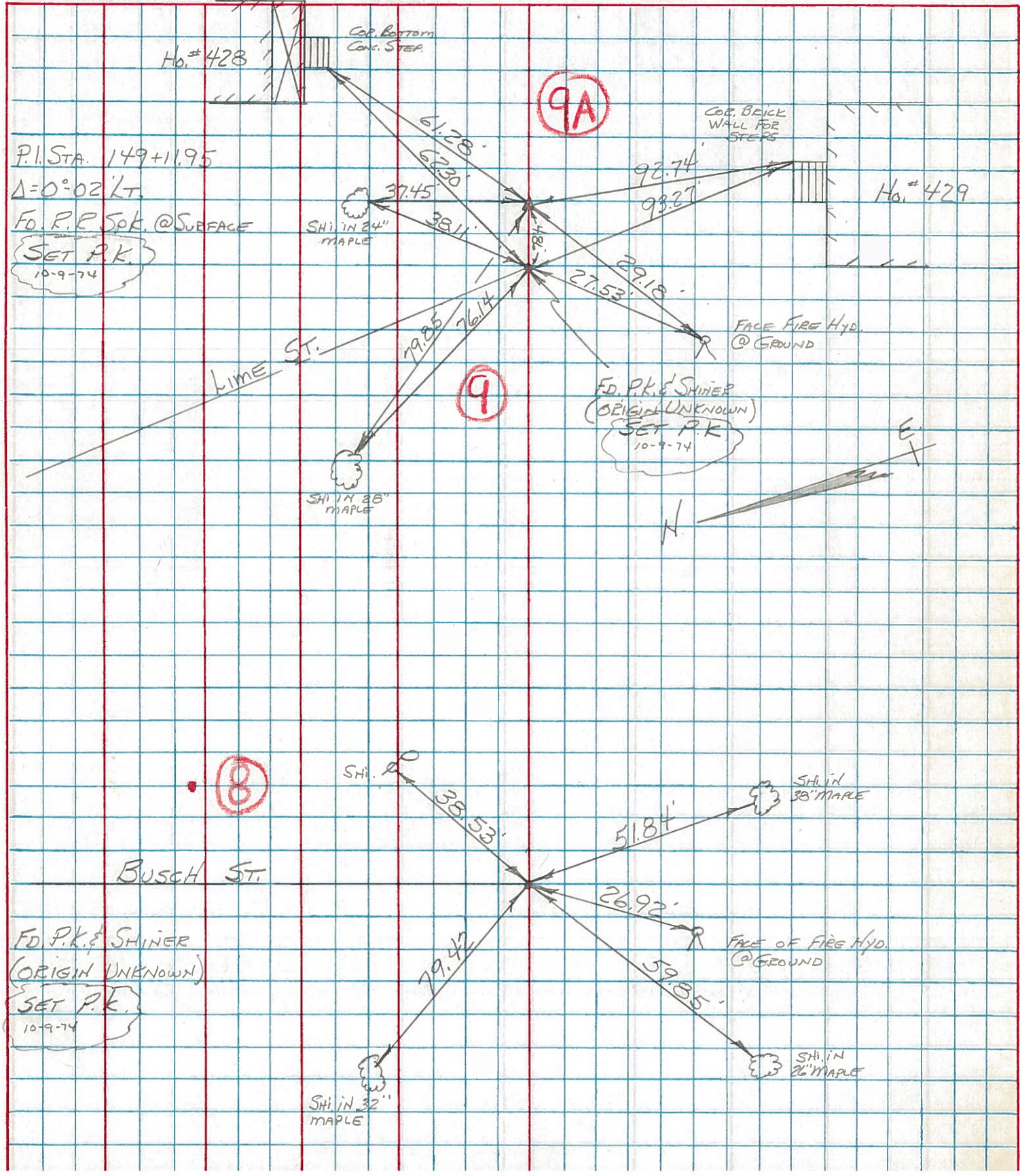
Record: Pot 144+97.81 (1966)
 Fd Nail - Searched below D.N.F.
 PK - Reset PK/W 4-18-91

Set Mag/W
 10-22-04
 M.B.



| PERSONNEL | TITLE | PERSONNEL | TITLE | COUNTY | DATE |
|-----------|-------|-----------|-------|----------------------|---------------|
| BURNSIDE | | | | SANDUSKY | 7-9-74 |
| SMITH | | | | U.S. 20 | WEATHER CLEAR |
| BOWERS | | | | SEC. WOODVILLE CORP. | TEMP. +92° |
| KIJOWSKI | | | | | |

DESCRIPTION CONTROL TIES JOB NO. _____



| PERSONNEL | TITLE | PERSONNEL | TITLE | COUNTY | DATE | WEATHER | TEMP |
|-----------|-------|-----------|-------|-----------------|---------|---------------|------|
| Schneider | | Potts | | Sandusky | 9-21-66 | Partly-Cloudy | 60° |
| Masser | | | | S. R. U.S. # 20 | | | |
| Barbour | | | | SEC. 2.24-3.70 | | | |
| Redding | | | | | | | |

DESCRIPTION starts LEFT CENTER LINE RIGHT JOB NO.

