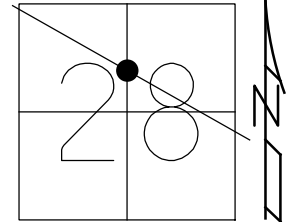


O.D.O.T. DISTRICT 2 SURVEY OFFICE (USE ONLY)

PERSONNEL	REFERENCE NO. <u>9</u>	SHEET <u>14</u> OF <u>20</u>
NOTES <u>MILLER</u>	DATE <u>6-18-19</u>	ROUTE <u>US 20</u>
H.C. <u>O'DONNELL</u>	WEATHER <u>SUNNY</u>	COUNTY <u>SANDUSKY</u>
R.C. <u>AUBLE</u>	TEMP. <u>66°F</u>	TOWNSHIP <u>WOODVILLE</u>
		SECTION <u>28</u>
DWG BY <u>AUBLE</u>	PID <u>95718</u>	T <u>6</u> N R <u>13</u> E

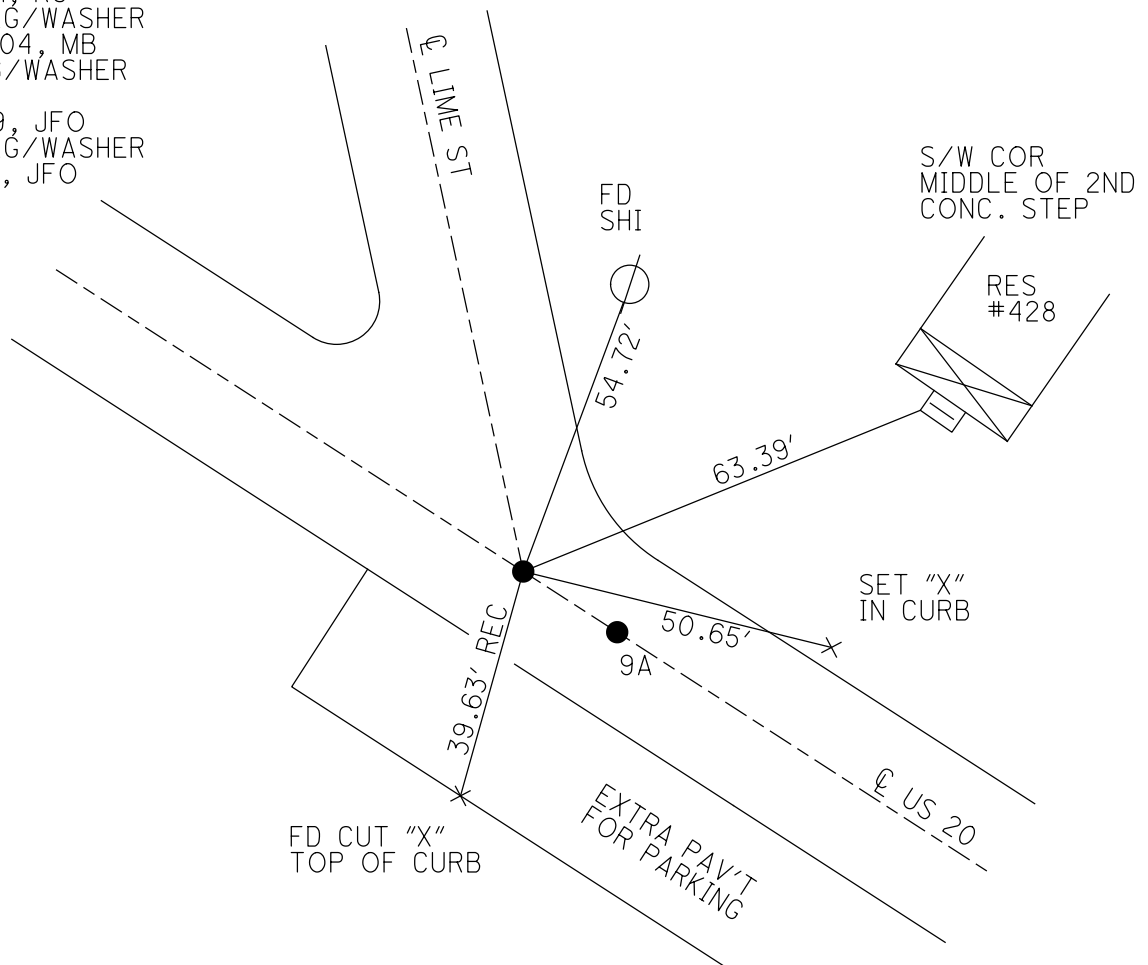
TYPE MONUMENT MAG/WASHER
 ON SURFACE - ~~BELOW~~ ON
 OFFSET Q PAVEMENT ON LT : RT
22.1' TO RT EDGE PAVEMENT
 STATION: 149+07.06



HORZ. DATUM: NAD83 (2011) GEOID: 2012A
 GRID: NORTHING: 651695.493 EASTING: 1730767.341

RECORD: P.O.T.
 STA. 149+07.06
 SET P.K./WASHER
 4/18/91, RC
 SET MAG/WASHER
 10/22/04, MB
 FD MAG/WASHER
 REFM1
 6/18/19, JFO
 SET MAG/WASHER
 11/4/19, JFO

DIST. 9-9A = 4.86'



O.D.O.T. DISTRICT 2 SURVEY OFFICE

PERSONNEL

REFERENCE NO. M

SHEET 13 OF 18

NOTES Barnhisel

H.C. Nuhfer

R.C. Huss - DRAWING

Hooker

DATE 03-31-04

WEATHER Clody

TEMP. 45°

ROUTE US-20

COUNTY Sandusky

TOWNSHIP Woodville

SECTION 28

T 6 N R 13 E

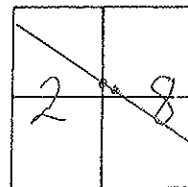
TYPE MONUMENT (A) + (B) = PK/W'S

~~ON SURFACE~~ - BELOW 1.5" below

LEFT - (E PAV'T) - RIGHT E

22.1 TO Pt. EDGE PAVEMENT

S.L.M. Pt (A) = 149+15



Record: Point "A" Pot - 149+07.06

New Sta 149+67.35 (SLM)

Point "B" P.I. - 149+11.95 } 1966
 $\Delta = 0^\circ - 02' Lt.$

Fd Shank of RR Spk. 1 1/2" down

Reset PK/W on surface 4-18-91

A turned 4-18-91 = 0° - 02' - 29" Lt.

New Sta = 149+72.21 (SLM)

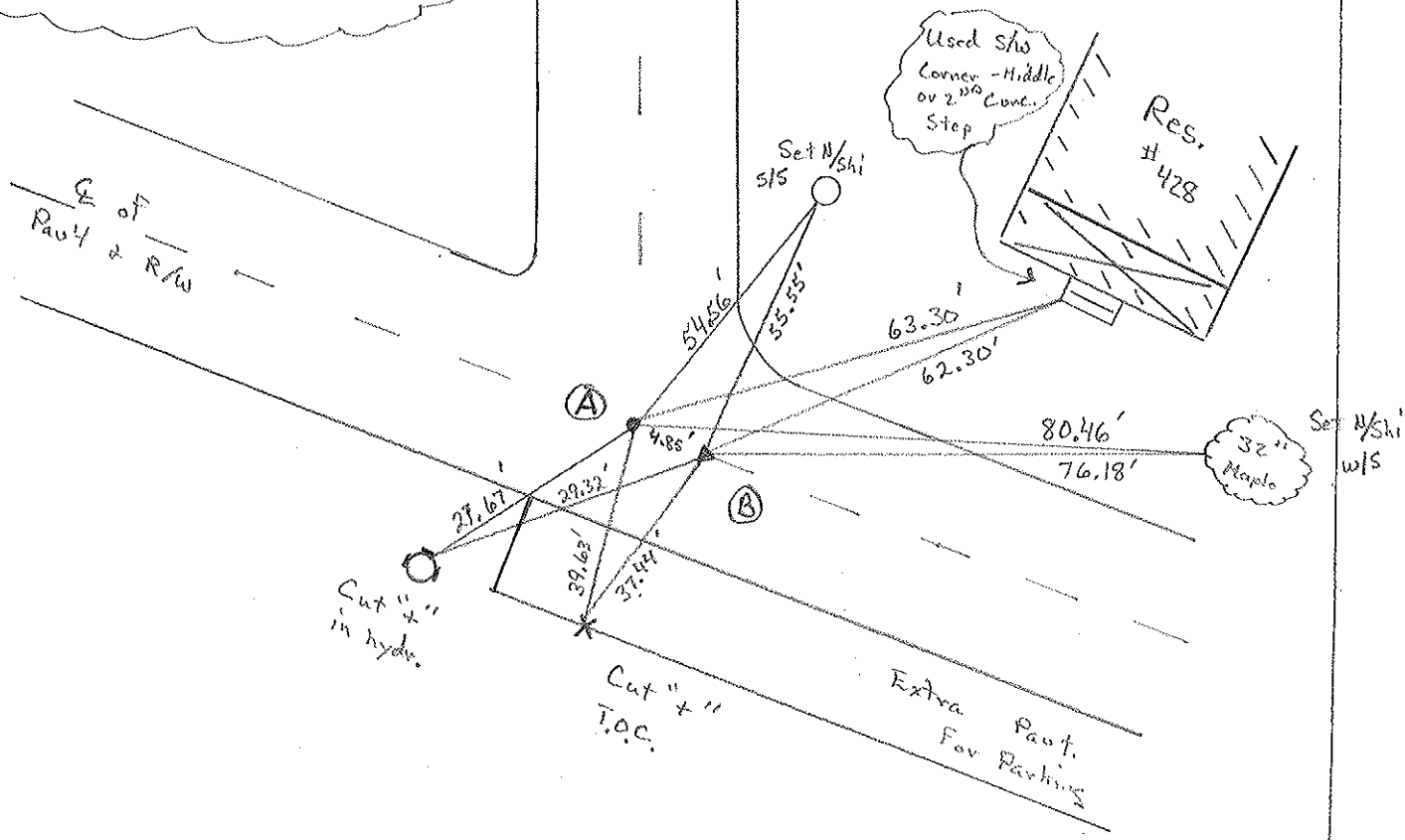
Set Mag/W
10-22-04
M.B.
both points

E of Pav't & R/W

Cut "x" in hydr.

Cut "x" T.O.C.

Extra Pav't. For Parking



O.D.O.T. DISTRICT 2 SURVEY OFFICE

PERSONNEL _____

REFERENCE NO. _____

SHEET 5 OF _____

NOTES HOFFMAN

H.C. BARNHISEL

R.C. _____

DATE 4-25-91

WEATHER CLOUDY

TEMP. 60°

ROUTE US 20

COUNTY SANDUSKY

TOWNSHIP WOODVILLE

SECTION 28

T. 6 N. R. 13 E

"A"

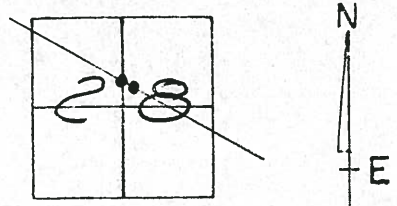
"B"

TYPE MONUMENT P.K./SHINER & P.K./WASHER
ON SURFACE - BELOW 1 1/2" down & SURFACE

~~LEFT~~ - & PAV'T. - ~~RIGHT~~ YES

TO EDGE PAVEMENT

S.L.M. PT. "A" = 149+67.35



RECORD: POINT "A" P.O.T. 149+07.06
New STA. = 149+67.35 (SLM) (1966)

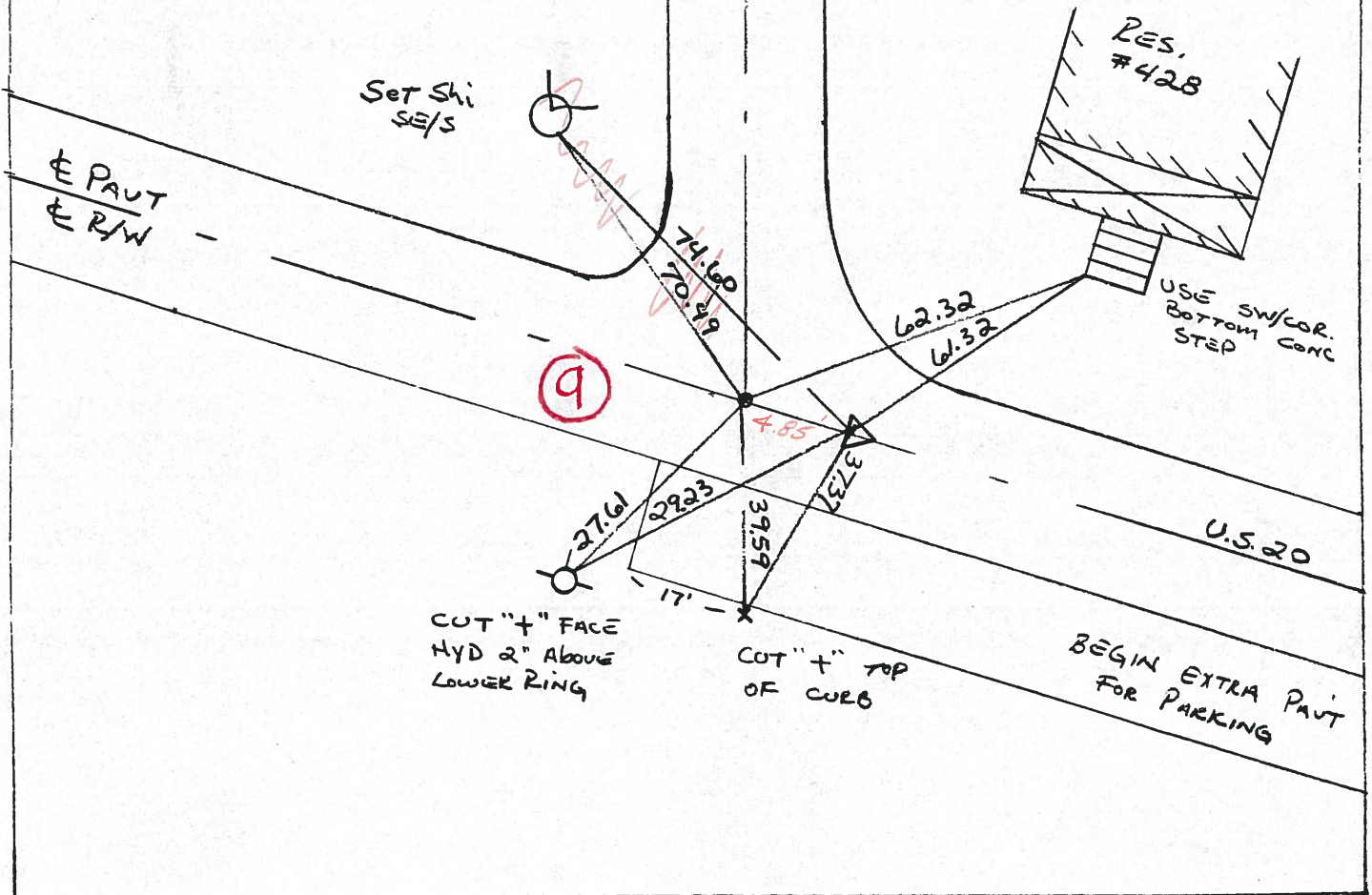
POINT "B" P.I. 149+11.95 } 1966
 $\Delta = 0^{\circ}-02'-17"$

Fd SHANK OF R.R. SPIKE 1 1/2" down
Re-set P.K./WASHER ON SURFACE 4-18-91
 Δ TURNED 4-18-91 = 0^{\circ}-02'-29" LT.
New STA. = 149+72.21 (SLM)

E PAVT LINE ST.

12-9-91
CH cloudy
R-HC 45°
B-PC
G-A ON &

SET PK'S / ~~SET~~
WASHERS



O.D.O.T. DISTRICT 2 SURVEY OFFICE

PERSONNEL _____

REFERENCE NO. _____

SHEET 5 OF _____

NOTES HOFFMAN

H.C. BARNHISEL

DATE 4-25-91

ROUTE US 20

R.C. _____

WEATHER CLOUDY

COUNTY SANDUSKY

TEMP. 60°

TOWNSHIP WOODVILLE

SECTION 28

T. 6 N R. 13 E

"A"

"B"

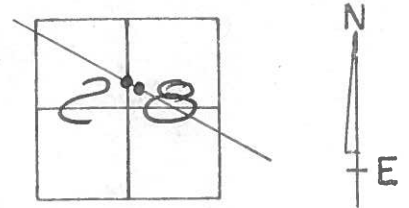
TYPE MONUMENT P.K./SHINER & P.K./WASHER

ON SURFACE - BELOW 1 1/2" down & SURFACE

~~LEFT~~ - & PAV'T. - ~~RIGHT~~ YES

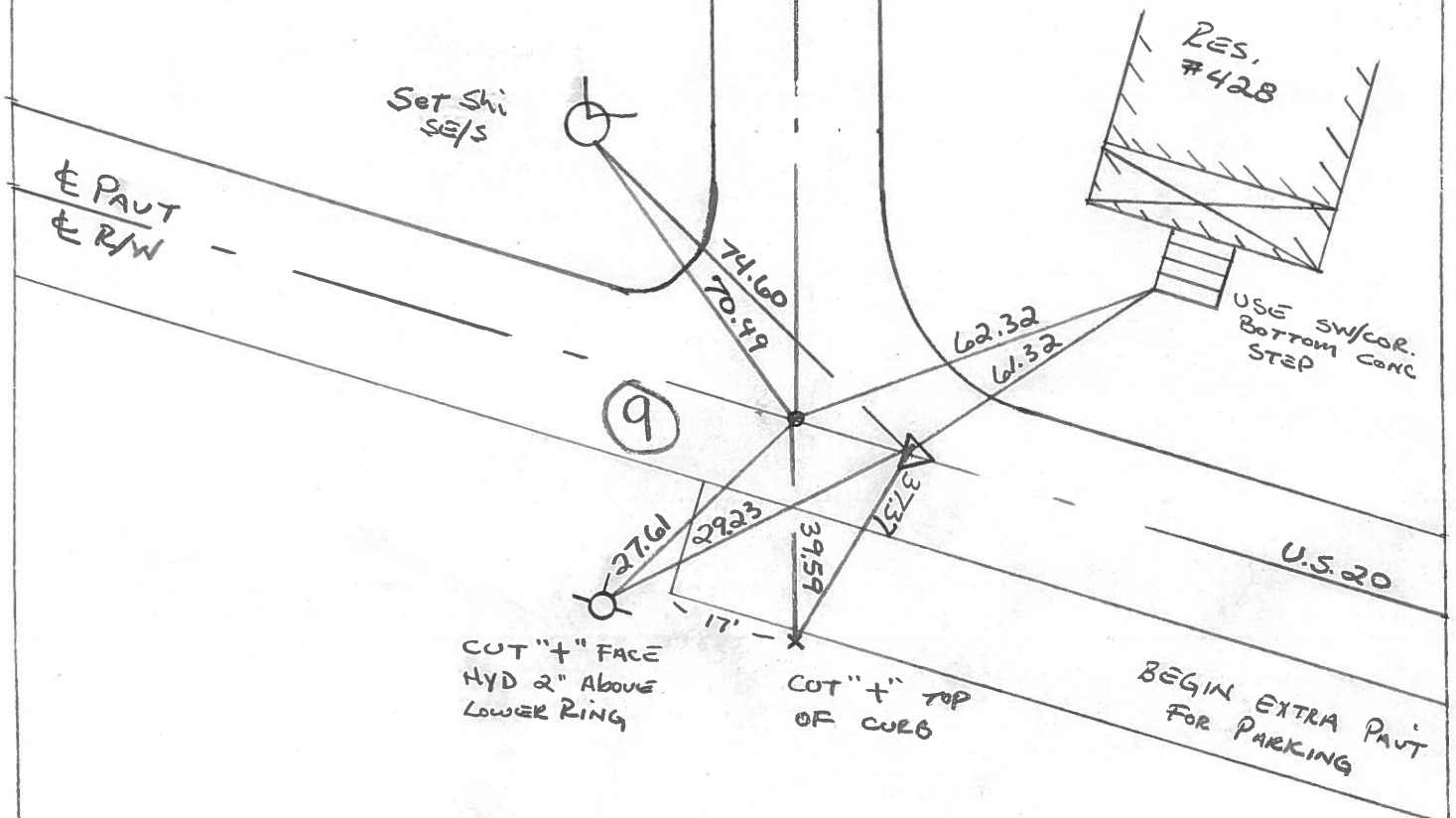
TO EDGE PAVEMENT

S.L.M. PT. "A" = 149+67.35



RECORD: POINT "A" P.O.T. 149+07.06 (1966)
 New STA. = 149+67.35 (SLM)
 POINT "B" P.I. 149+11.95 } 1966
 $\Delta = 0^{\circ}-02'29"$ LT
 Fd SHANK OF R.R. SPIKE 1 1/2" down
 Re-SET P.K./WASHER ON SURFACE 4-18-91
 Δ TURNED 4-18-91 = $0^{\circ}-02'-29"$ LT.
 New STA. = 149+72.21 (SLM)

E PAVT LIME ST.



PERSONNEL TITLE PERSONNEL TITLE

BURNSIDE

COUNTY SANDUSKY

DATE 7-9-74

SMITH

S. R. U.S. 20

WEATHER CLEAR

BOWERS

SEC. WOODVILLE CORP.

TEMP. +92°

KIOWSKI

DESCRIPTION

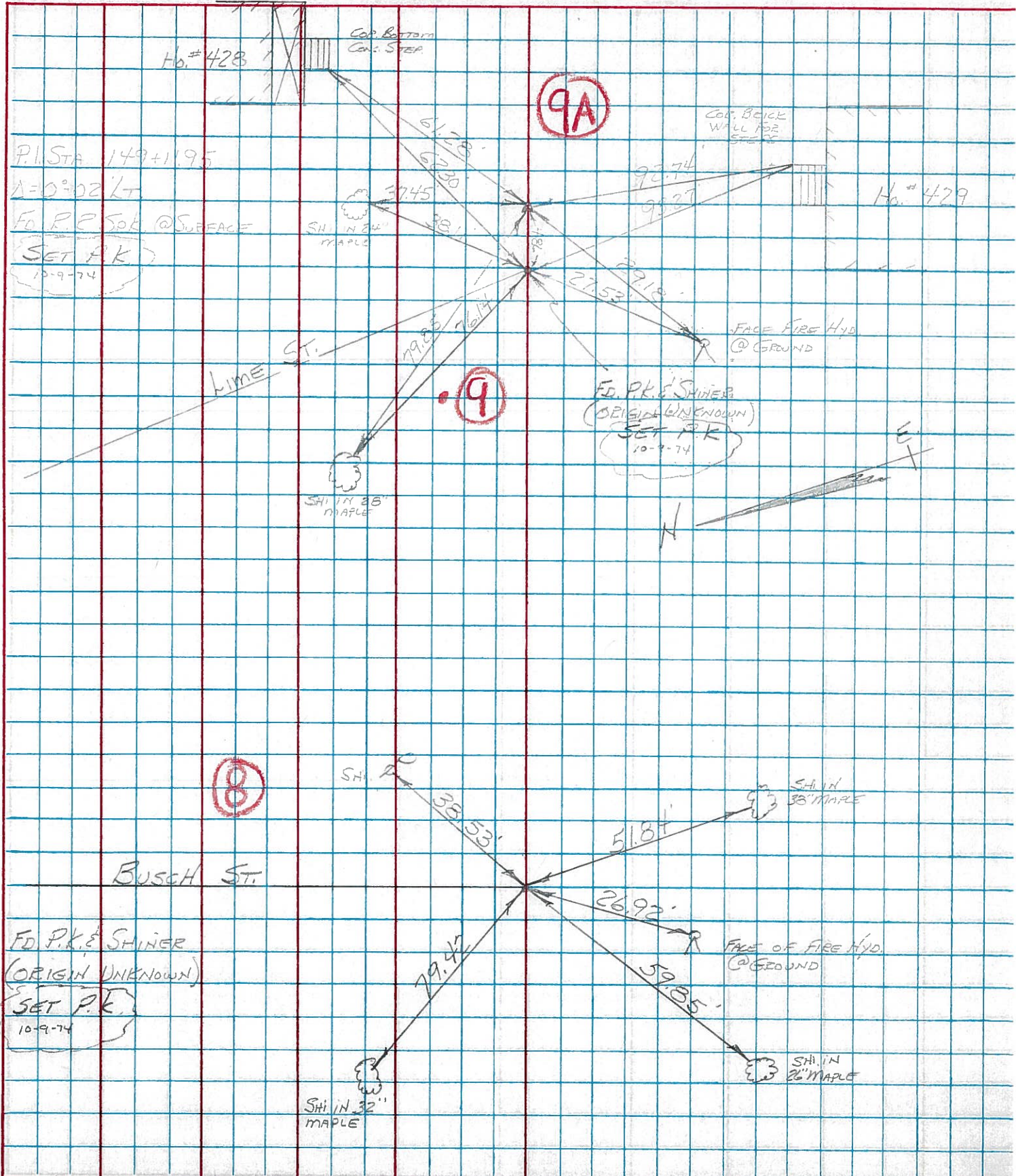
CONTROL TIES

JOB NO.

LEFT

CENTER LINE

RIGHT



PERSONNEL TITLE PERSONNEL TITLE

Schneider _____ Potts _____
Messer _____
Barbour _____
Redding _____

COUNTY Sandusky DATE 9-21-66

S. R. U.S. # 20 WEATHER Partly-Cloudy

SEC. 2.24-3.70 TEMP 60°

DESCRIPTION starts CENTER LINE RIGHT JOB NO.

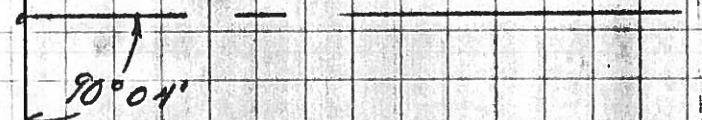
122+37.16 Dick St. Rts.
set spk.



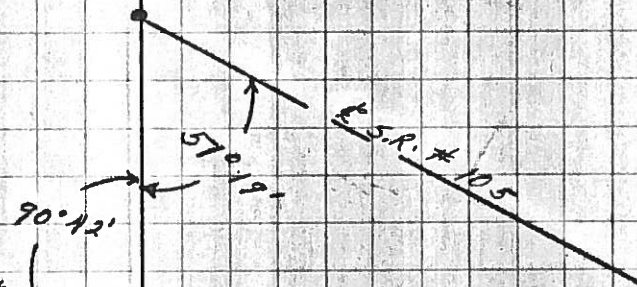
126+38.0 Hartman St. Rts.
set spk



130+88.23 George St. Rts.
set Nail



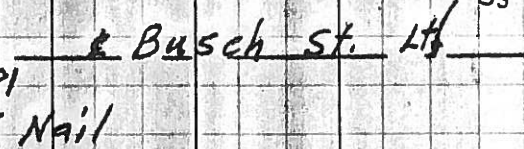
139+34.75 S.R. # 105 Rts.
set P.K. Nail



140+97.07 E Pine St. Lts.
set P.K. Nail



144+97.81
set P.K. Nail



149+07.06
set P.K. Nail

