

O.D.O.T. DISTRICT 2 SURVEY OFFICE (USE ONLY)

PERSONNEL

REFERENCE NO. 9 A

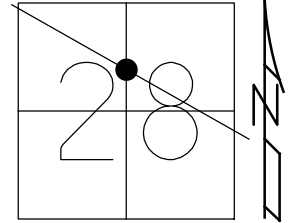
SHEET 15 OF 20

NOTES MILLER DATE 6-18-19
 H.C. O'DONNELL WEATHER SUNNY
 R.C. AUBLE TEMP. 66°F
RHOADES

ROUTE US 20
 COUNTY SANDUSKY
 TOWNSHIP WOODVILLE
 SECTION 28
T 6 N R 13 E

DWG BY AUBLE PID 95718

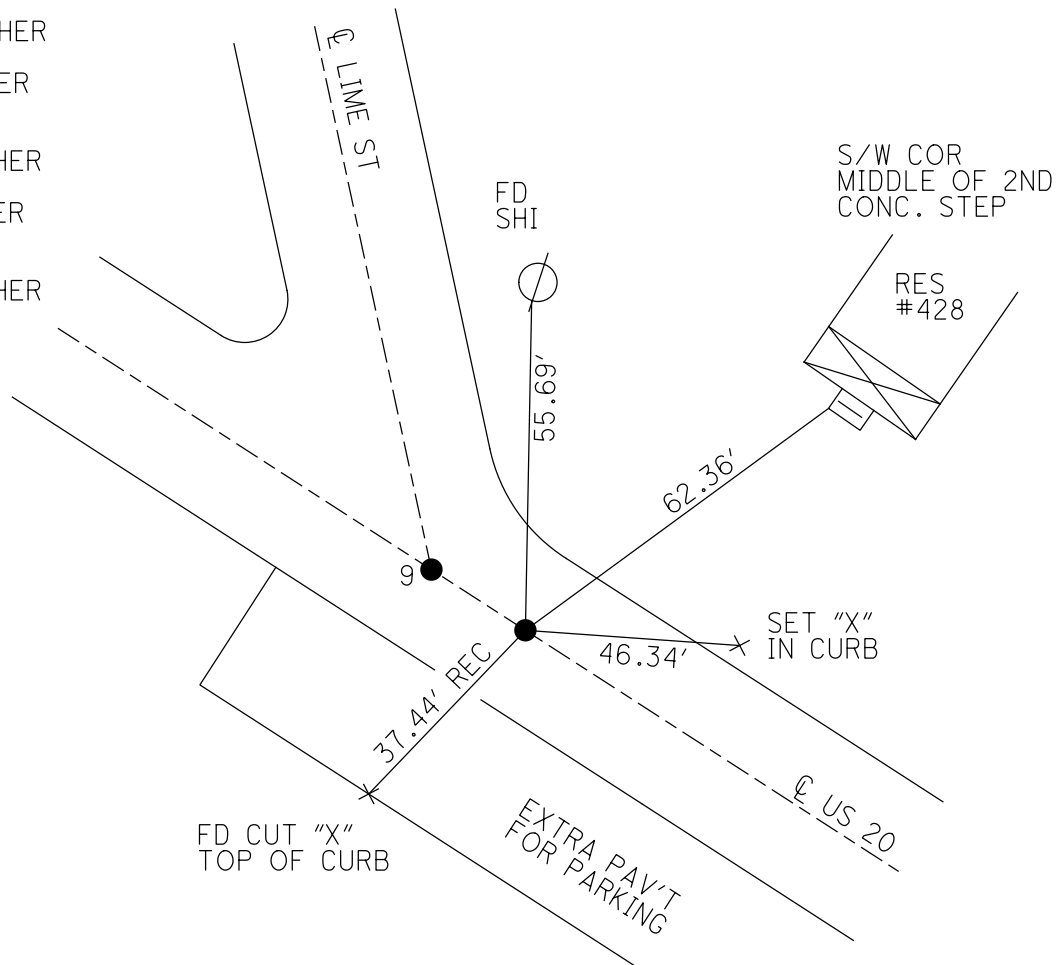
TYPE MONUMENT MAG/WASHER
 ON SURFACE - ~~BELOW~~ ON
 OFFSET ☉ PAVEMENT ON LT : RT
22.1' TO RT EDGE PAVEMENT
 STATION: 149+07.06



HORIZ.DATUM: NAD83 (2011) GEOID: 2012A
 GRID: NORTHING: 651693.112 EASTING: 1730771.580

RECORD: P.I.
 STA. 149+11.95
 $\Delta = 0^\circ 02' \text{ LT}$
 FD R.R. SPIKE SHANK
 1 1/2" DOWN
 SET P.K./WASHER
 4/18/91
 FD P.K./WASHER
 P.K./WASHER
 3/31/04, MB
 SET MAG/WASHER
 10/22/04, MB
 FD MAG/WASHER
 REFM2
 6/18/19, JFO
 SET MAG/WASHER
 11/4/19, JFO

DIST. 9-9A = 4.86'



O.D.O.T. DISTRICT 2 SURVEY OFFICE

PERSONNEL _____

REFERENCE NO. M

SHEET 13 OF 18

NOTES Barnhisel

H.C. Nuhfer

R.C. Huss - DRAWING

Hooker

DATE 03-31-04

WEATHER Clody

TEMP. 45°

ROUTE US-20

COUNTY Sandusky

TOWNSHIP Woodville

SECTION 28

T 6 N R 13 E

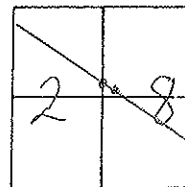
TYPE MONUMENT (A) + (B) = PK/W'S

~~ON SURFACE~~ - BELOW 1.5" below

LEFT - (E PAV'T) - RIGHT E

22.1 TO Pt. EDGE PAVEMENT

S.L.M. Pt (A) = 149+15



Record: Point "A" Pot - 149+07.06

New Sta 149+67.35 (SLM)

Point "B" P.I. - 149+11.95 } 1966
 $\Delta = 0^\circ - 02' Lt.$

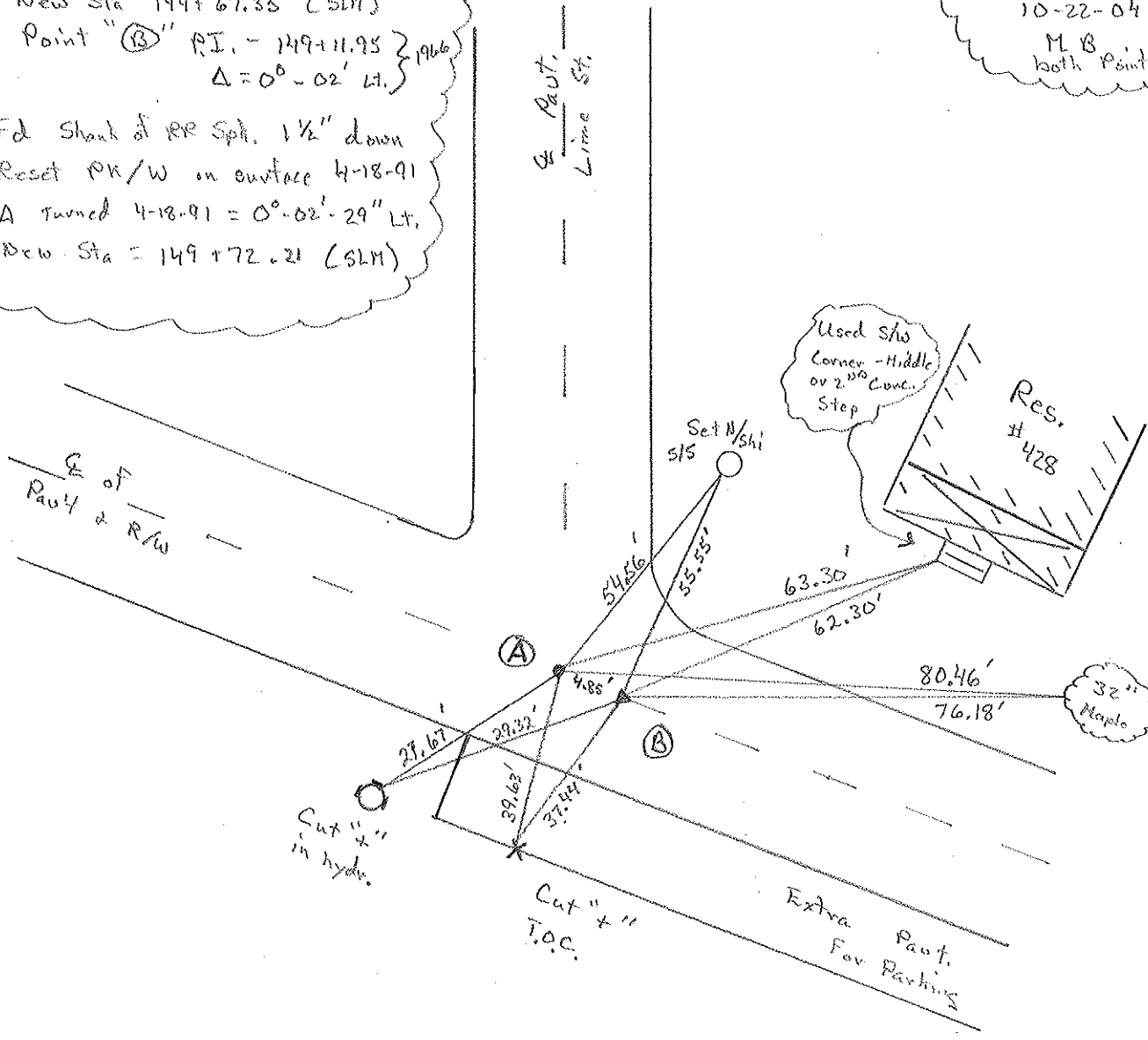
Fd Shank of RR Spk. 1 1/2" down

Reset PK/W on surface 4-18-91

A turned 4-18-91 = 0° - 02' - 29" Lt.

New Sta = 149+72.21 (SLM)

Set Mag/W
10-22-04
M.B.
both points



Cut "x" in hydr.

Cut "x" T.O.C.

Extra Pavt. For Parking

32" Maple

Set N/Ski w/s

O.D.O.T. DISTRICT 2 SURVEY OFFICE

PERSONNEL _____

REFERENCE NO. _____

SHEET 5 OF _____

NOTES HOFFMAN

H.C. BARNHISEL

R.C. _____

DATE 4-25-91

WEATHER CLOUDY

TEMP. 60°

ROUTE US 20

COUNTY SANDUSKY

TOWNSHIP WOODVILLE

SECTION 28

T. 6 N. R. 13 E

"A"

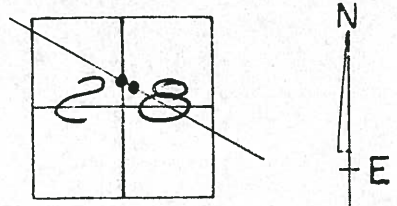
"B"

TYPE MONUMENT P.K./SHINER & P.K./WASHER
ON SURFACE - BELOW 1 1/2" down & SURFACE

~~LEFT~~ - & PAV'T. - ~~RIGHT~~ YES

TO EDGE PAVEMENT

S.L.M. PT. "A" = 149+67.35

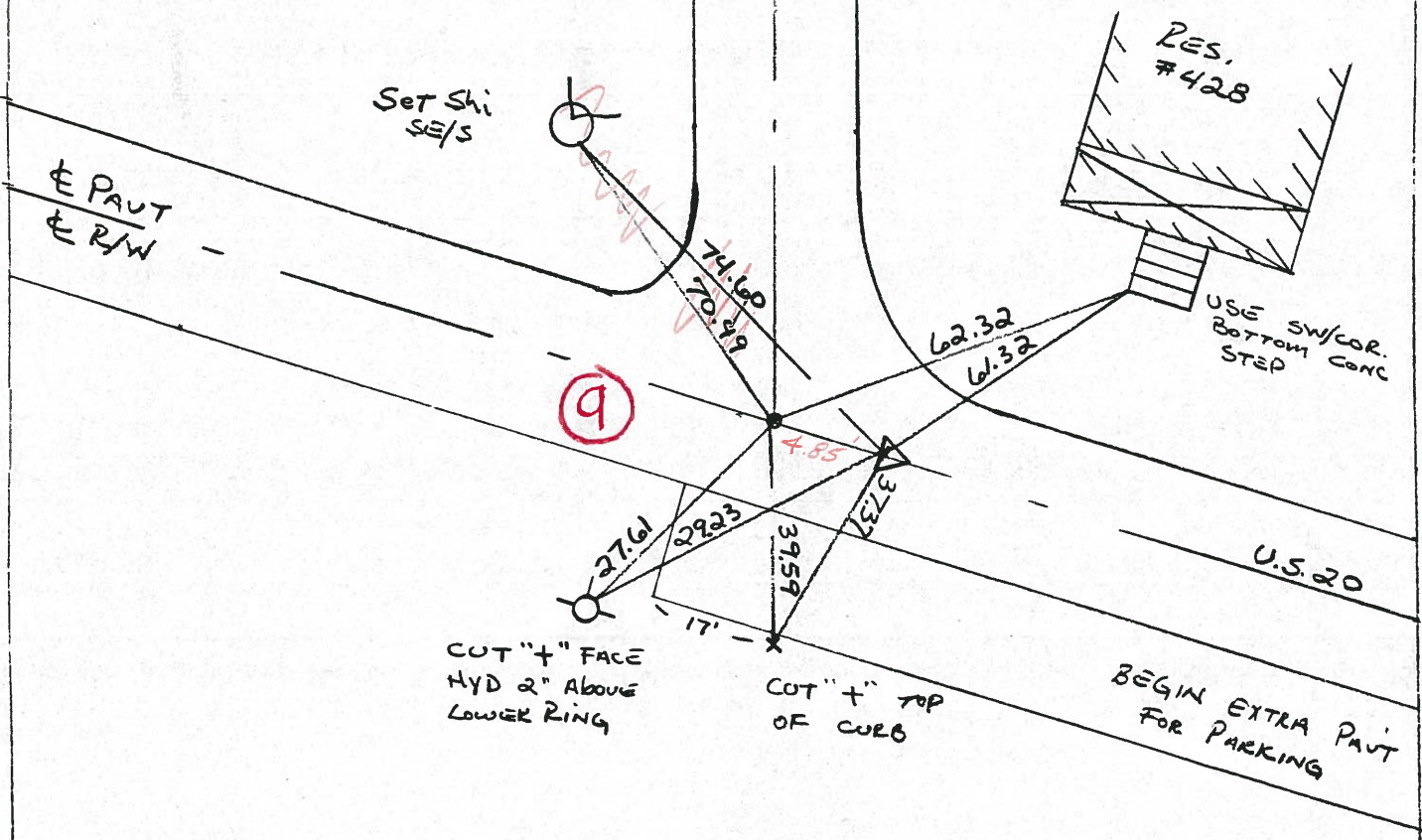


RECORD: POINT "A" P.O.T. 149+07.06
New STA. = 149+67.35 (SLM) (1966)
POINT "B" P.I. 149+11.95 } 1966
 $\Delta = 0^{\circ}-02'-17"$ LT
Fd SHANK OF R.R. SPIKE 1 1/2" down
Re-set P.K./WASHER ON SURFACE 4-18-91
 Δ TURNED 4-18-91 = 0^{\circ}-02'-29" LT.
New STA. = 149+72.21 (SLM)

E PAVT LINE ST.

12-9-91
CHV CLOUDY
R-HC 45°
B-PC
G-A ON E

SET PK'S / ~~SET~~
WASHERS



PERSONNEL TITLE PERSONNEL TITLE

COUNTY SANDUSKY DATE 7-9-74

BURNSIDE

SMITH

S. R. U.S. 20

WEATHER CLEAR

BOWERS

KIOWSKI

SEC. WOODVILLE CORP.

TEMP. +92°

DESCRIPTION

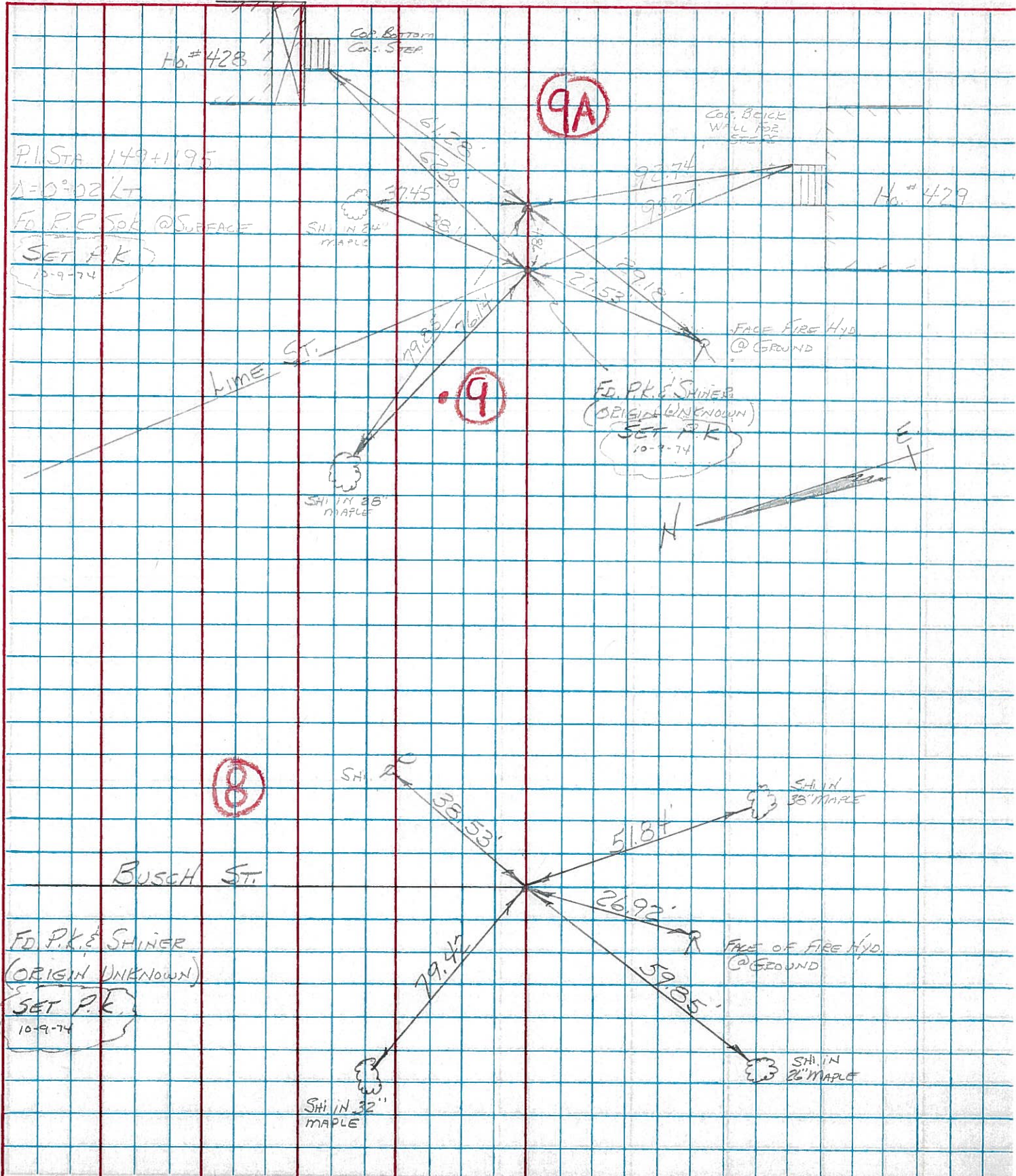
CONTROL TIES

JOB NO.

LEFT

CENTER LINE

RIGHT



P.I. STA 149+1.95

$\Delta = 0^{\circ}02' LT$

FD. P.K. & SHINER @ SURFACE

SET P.K. 10-9-74

Ho. # 429

LIME ST.

BUSCH ST.

FD. P.K. & SHINER (ORIGINAL UNKNOWN)

SET P.K. 10-9-74

FACE OF FIRE HYD. @ GROUND

SH. IN 26" MAPLE

SH. IN 32" MAPLE