

O.D.O.T. DISTRICT 2 SURVEY OFFICE (USE ONLY)

PERSONNEL

REFERENCE NO. 9 B

SHEET 16 OF 20

NOTES MILLER

DATE 6-18-19

ROUTE US 20

H.C. O'DONNELL

WEATHER SUNNY

COUNTY SANDUSKY

R.C. AUBLE

TEMP. 66°F

TOWNSHIP WOODVILLE

RHOADES

SECTION 28

DWG BY AUBLE

PID 95718

T 6 N R 13 E

TYPE MONUMENT MAG/WASHER

ON SURFACE - ~~BELOW~~ ON

OFFSET Q PAVEMENT ON LT : RT

25.4' TO LT EDGE PAVEMENT

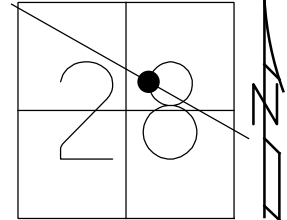
STATION: 152+86

HORIZ. DATUM: NAD83 (2011)

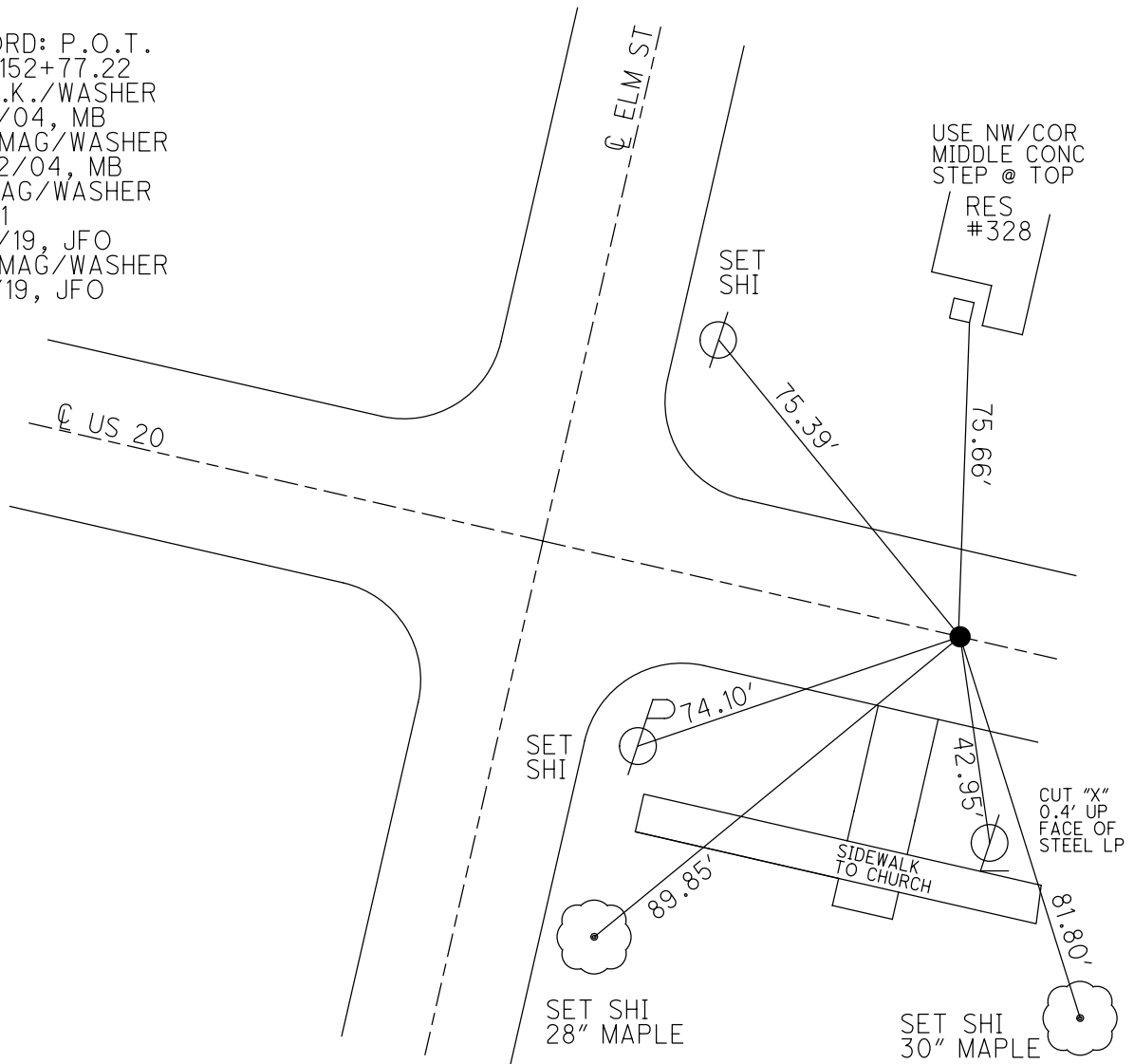
GEOID: 2012A

GRID: NORTHING: 651514.755

EASTING: 1731090.410



RECORD: P.O.T.
 STA. 152+77.22
 FD P.K./WASHER
 3/31/04, MB
 SET MAG/WASHER
 10/22/04, MB
 FD MAG/WASHER
 REFN1
 6/18/19, JFO
 SET MAG/WASHER
 11/4/19, JFO



O.D.O.T. DISTRICT 2 SURVEY OFFICE

PERSONNEL

REFERENCE NO. N

SHEET 14 OF 18

NOTES MB

H.C. RN

R.C. SH - DRAWING

Hooker

DATE 03/31/04

WEATHER cloudy

TEMP. +45°

ROUTE US 20

COUNTY SandersKY

TOWNSHIP Woodville

SECTION 28

T 6 N R 13 E

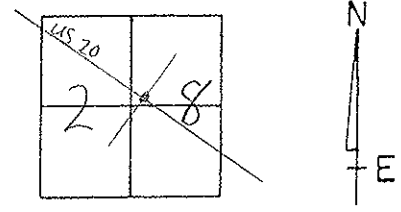
TYPE MONUMENT PK/washer

ON SURFACE ~~BELOW~~ Yes

~~LEFT -~~ PAV'T - RIGHT Yes

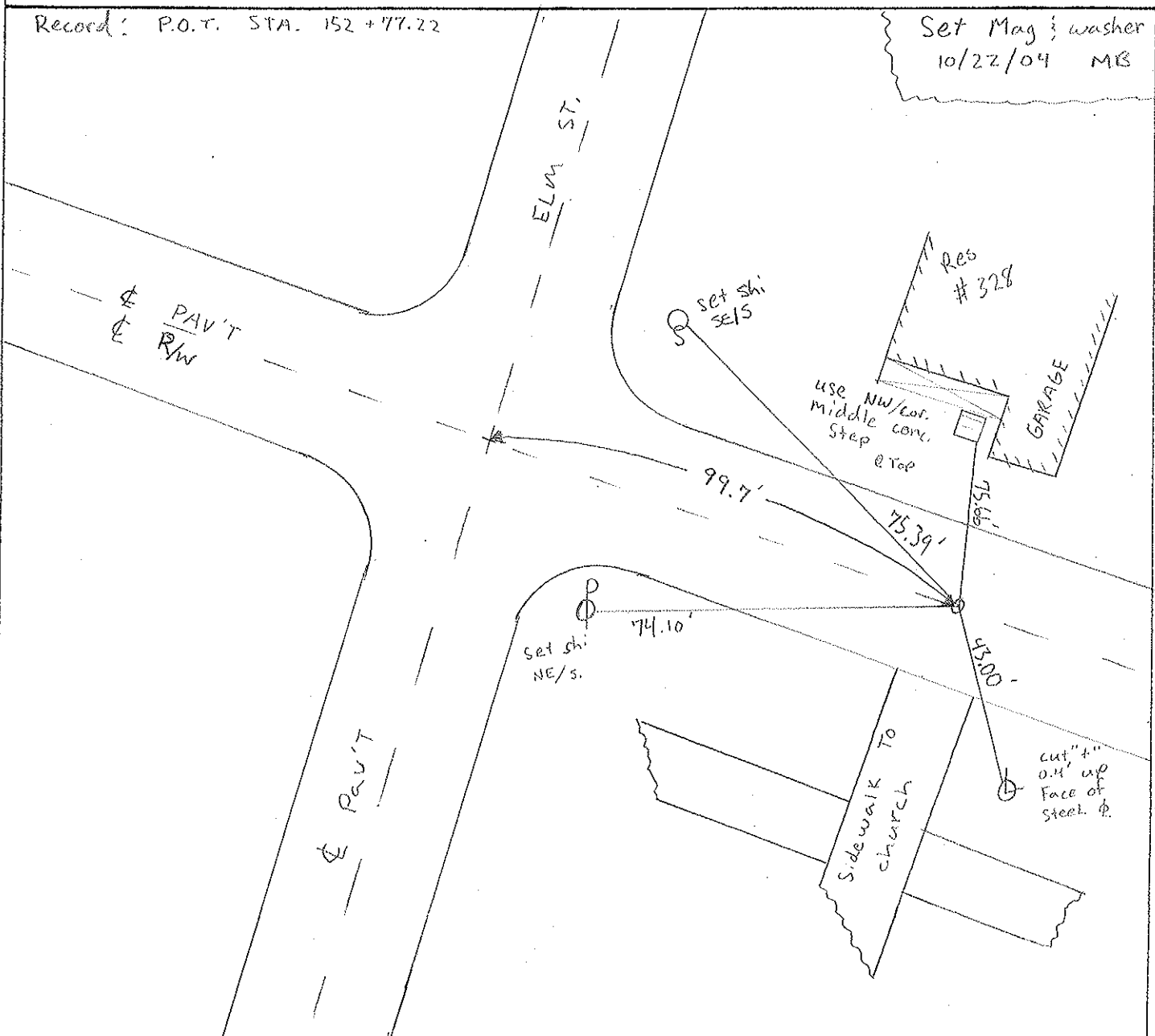
25.4' TO LT. EDGE PAVEMENT

S.L.M. 152+86



Record: P.O.T. STA. 152+77.22

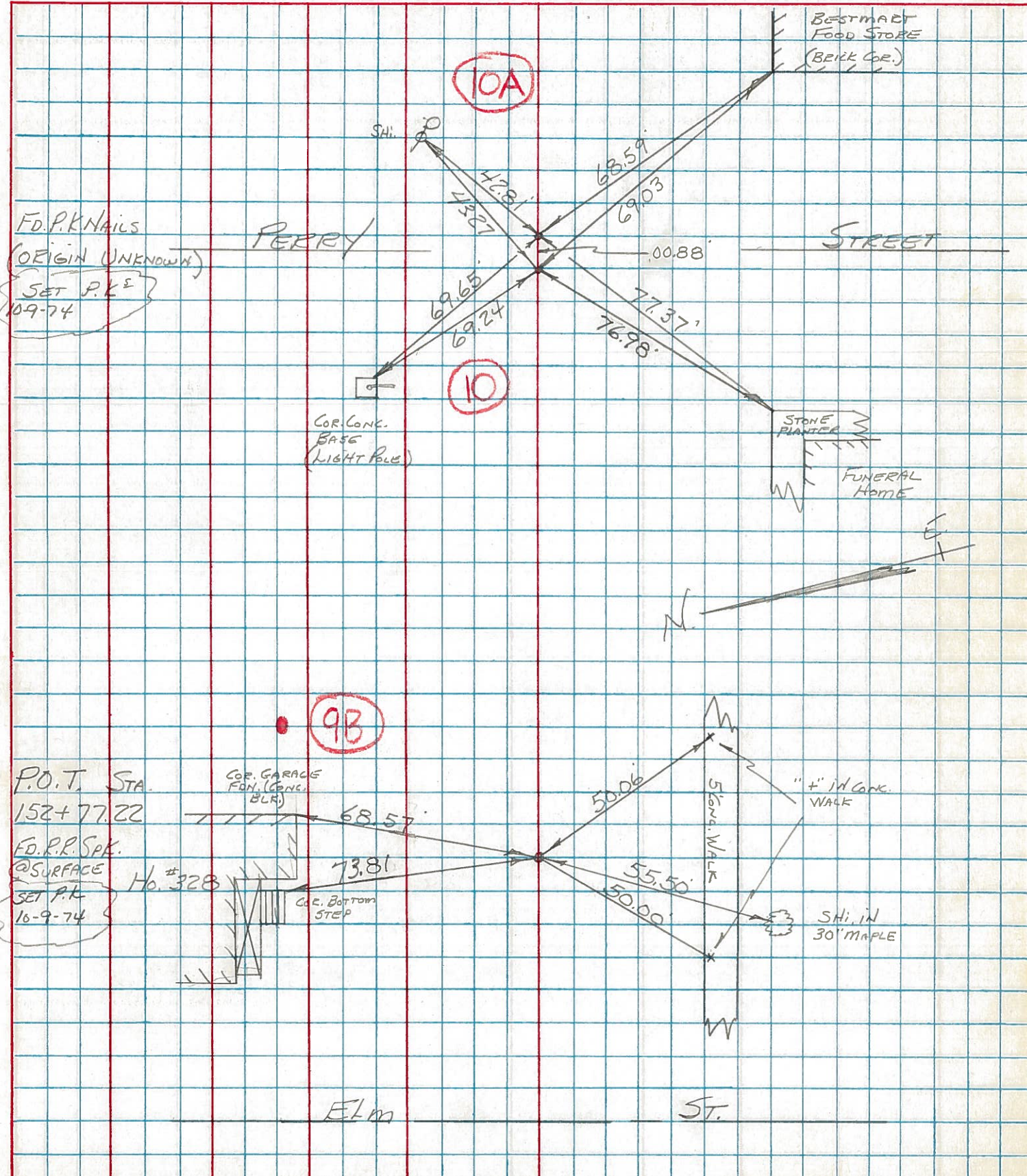
Set Mag washer
10/22/04 MB



PERSONNEL	TITLE	PERSONNEL	TITLE	COUNTY	DATE	WEATHER	TEMP.
BURNSIDE				SANDUSKY	7-9-74	CLEAR	+92°
SMITH				U.S. 20			
BOWERS				SEC. WOODVILLE CORP.			
KIOWSKI							

DESCRIPTION CONTROL TIES JOB NO. _____

LEFT CENTER LINE RIGHT



PERSONNEL TITLE PERSONNEL TITLE

COUNTY Sandusky DATE 9-21-66

Schneider

S. R. U.S. # 20 WEATHER cloudy

Crew

SEC. 2.24 - 3.70 TEMP. 65°

DESCRIPTION SHORTS CENTER LINE RIGHT JOB NO.

