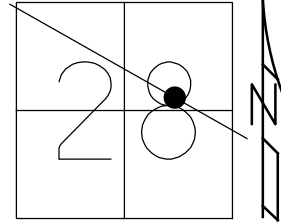


O.D.O.T. DISTRICT 2 SURVEY OFFICE (USE ONLY)

PERSONNEL _____ REFERENCE NO. 11 A SHEET 20 OF 20
 NOTES MILLER DATE 6-18-2019 ROUTE US 20
 H.C. O'DONNELL WEATHER SUNNY COUNTY SANDUSKY
 R.C. AUBLE TEMP. 66°F TOWNSHIP WOODVILLE
 RHOADES SECTION 28
 DWG BY AUBLE PID 95718 T 6 N R 13 E

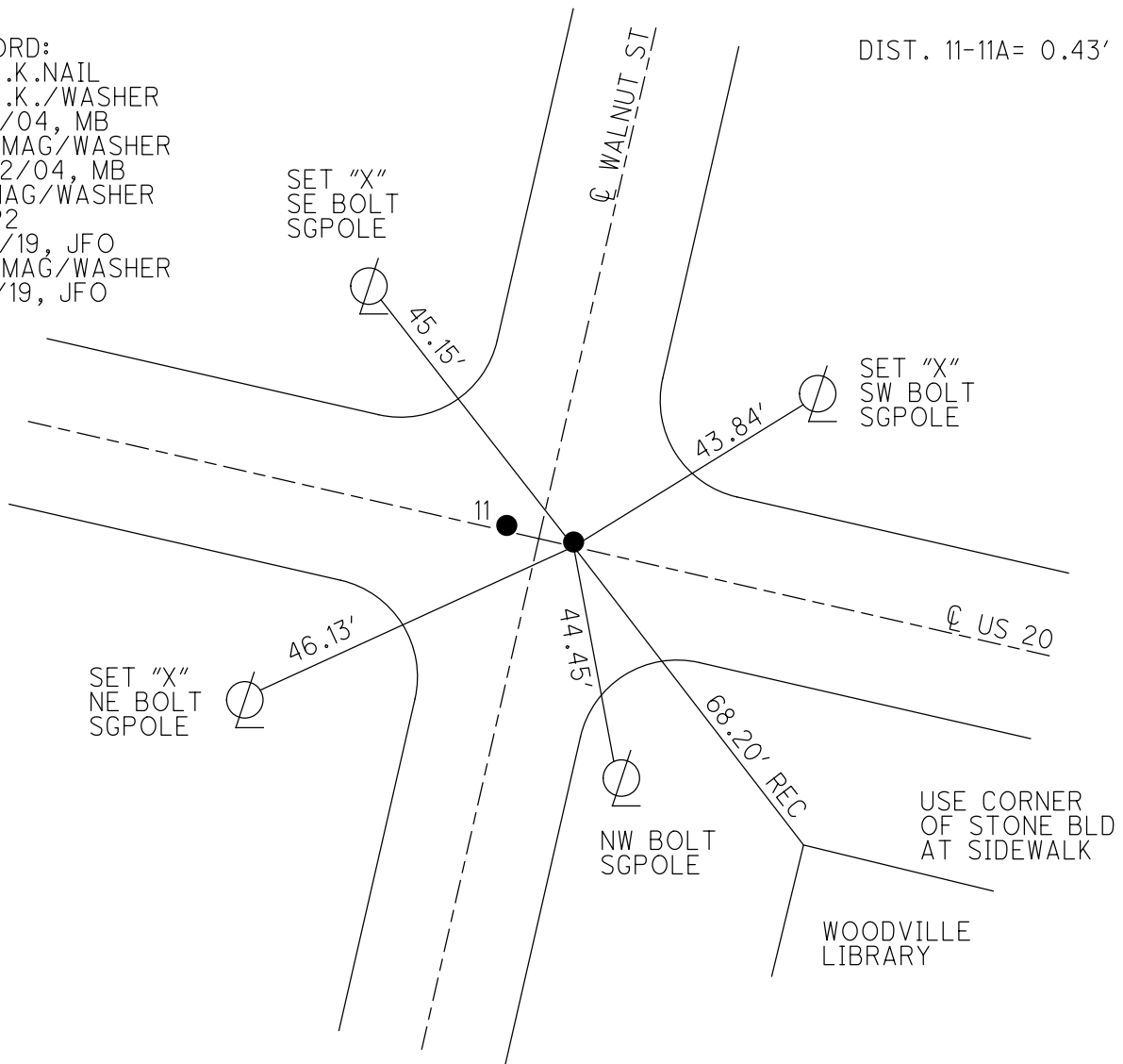
TYPE MONUMENT MAG/WASHER
 ON SURFACE - ~~BELOW~~ ON _____
 OFFSET Q PAVEMENT 1.0' LT : ~~RT~~
24.6' TO LT EDGE PAVEMENT
 STATION: 161+84



HORIZ.DATUM: NAD83 (2011) GEOID: 2012A
 GRID: NORTHING: 651074.894 EASTING: 1731875.326

RECORD:
 FD P.K.NAIL
 FD P.K./WASHER
 3/31/04, MB
 SET MAG/WASHER
 10/22/04, MB
 FD MAG/WASHER
 REFP2
 6/18/19, JFO
 SET MAG/WASHER
 11/4/19, JFO

DIST. 11-11A= 0.43'



O.D.O.T. DISTRICT 2 SURVEY OFFICE

PERSONNEL _____

REFERENCE NO. P

SHEET 16 OF 18

NOTES Barnhisel

H.C. Nahter

R.C. Huss - Drawing

Hooker

DATE 03-31-04

WEATHER Cl dy

TEMP. 45° F

ROUTE US 20

COUNTY Sandusky

TOWNSHIP Woodville

SECTION 28

T 6 N R 13 E

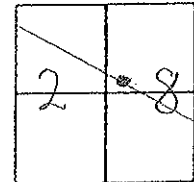
TYPE MONUMENT (A) + (B) PK/W's

ON SURFACE - BELOW surface

LEFT - ~~PAV'T~~ - RIGHT 1' Lt.

246' TO Lt. EDGE PAVEMENT

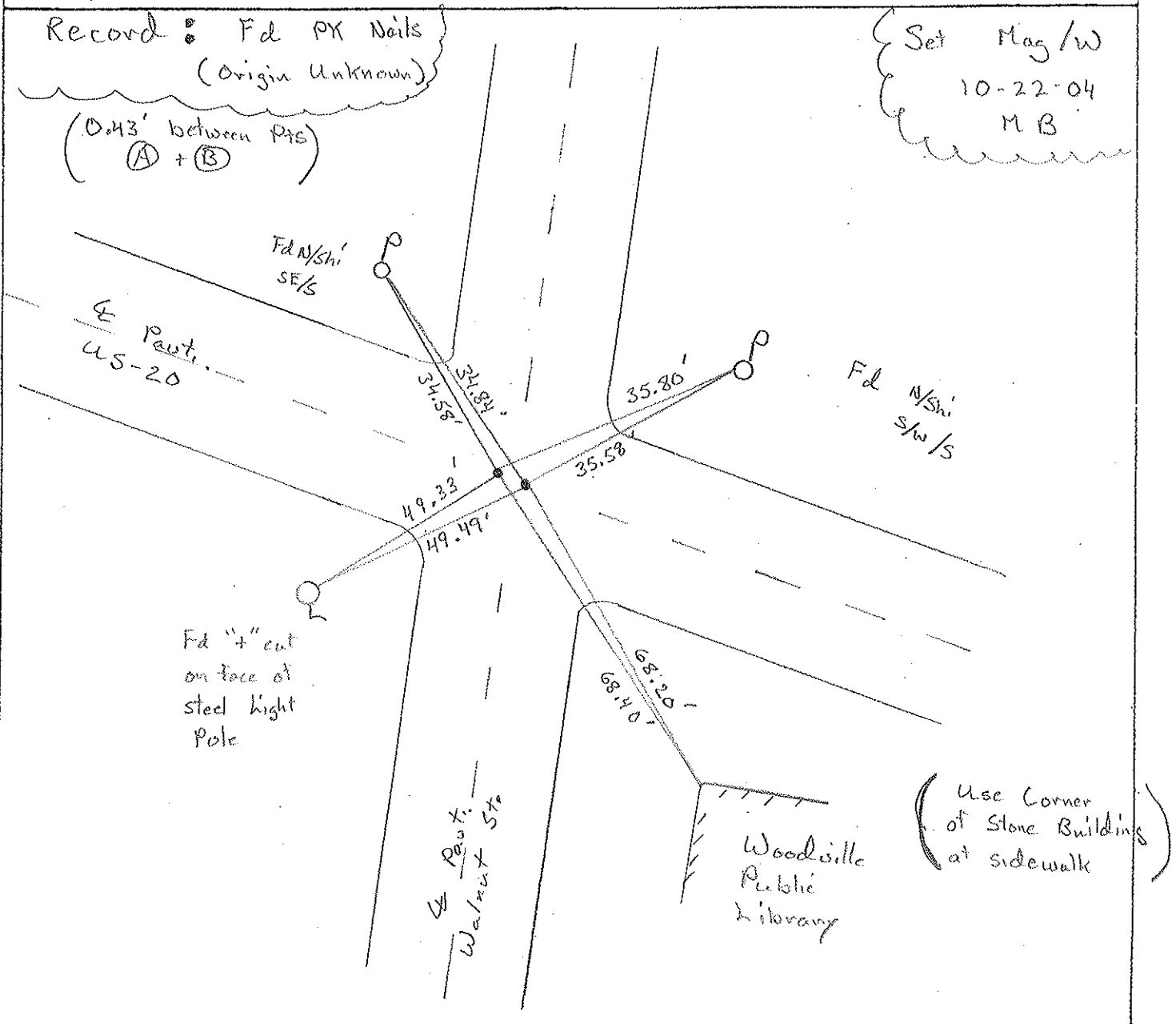
S.L.M. 16.1+84



Record: Fd PK Nails
(Origin Unknown)

(0.43' between Pts)
(A) + (B)

Set Mag/W
10-22-04
MB



Fd "4" cut
on face of
steel light
pole

(Use Corner
of Stone Buildings
at sidewalk)

Woodville
Public
Library

O.D.O.T. DISTRICT 2 SURVEY OFFICE

PERSONNEL _____

REFERENCE NO. _____

SHEET 8 OF _____

NOTES HOFFMAN

H.C. BARNHISEL

R.C. _____

DATE 4-25-91

WEATHER P. CLOUDY

TEMP. 60°

ROUTE US 20

COUNTY SANDUSKY

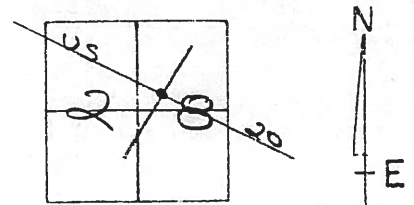
TOWNSHIP WOODVILLE

SECTION 28

T6 N R 13 E

"A" "B"

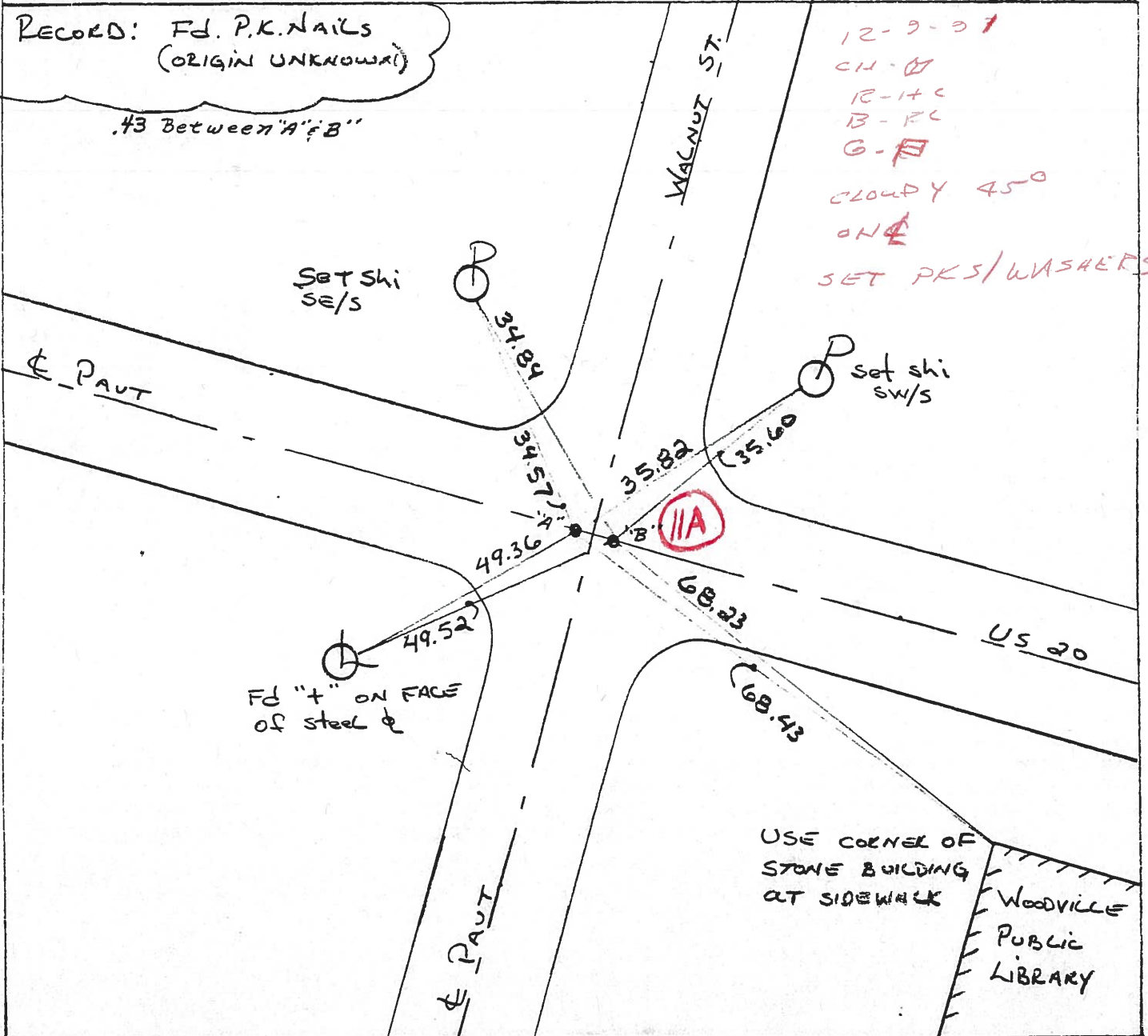
TYPE MONUMENT P.K. nail # P.K. nail
~~ON SURFACE~~ - BELOW 1 1/2" & 1 1/2"
 LEFT - CL PAVT. - RIGHT _____
24.6 TO LT. EDGE PAVEMENT
 S.L.M. 162+38



RECORD: FD. P.K. NAILS
(ORIGIN UNKNOWN)

.#3 Between "A" & "B"

12-9-91
 CH -
 R -
 B -
 G -
 CLOUDY 45°
 ON
 SET PK'S/WASHERS



O.D.O.T. DISTRICT 2 SURVEY OFFICE

PERSONNEL _____

REFERENCE NO. _____

SHEET 8 OF _____

NOTES HOFFMAN

H.C. BARNHISEL

R.C. _____

DATE 4-25-91

WEATHER P. CLOUDY

TEMP. 60°

ROUTE US 20

COUNTY SANDUSKY

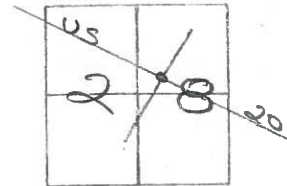
TOWNSHIP WOODVILLE

SECTION 28

T6 NR 13 E

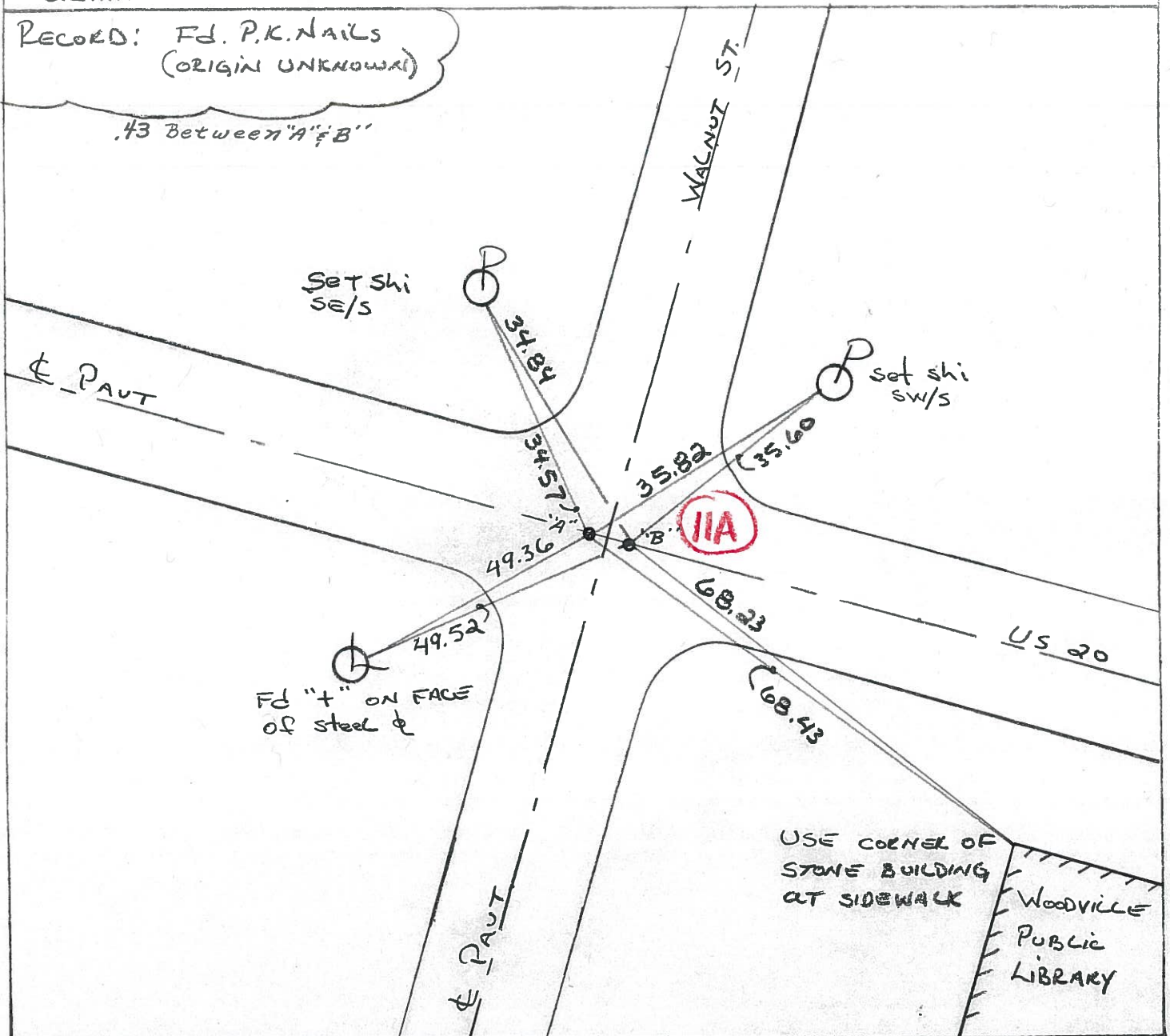
"A" "B"

TYPE MONUMENT P.K. nail # P.K. nail
~~ON SURFACE - BELOW~~ 1 1/2" # 1 1/2"
 LEFT - ☉ PAVT. - RIGHT _____
24.6 TO LT EDGE PAVEMENT
 S.L.M. 162+38



RECORD: FD. P.K. Nails
(ORIGIN UNKNOWN)

.43 Between "A" & "B"



PERSONNEL TITLE PERSONNEL TITLE

BURNSIDE

COUNTY SANDUSKY DATE 7-9-74

SMITH

S. R. U.S. 20 WEATHER CLEAR

BOWERS

SEC. WOODVILLE CORP. TEMP. +94°

KIJOWSKI

DESCRIPTION

CONTROL TIES

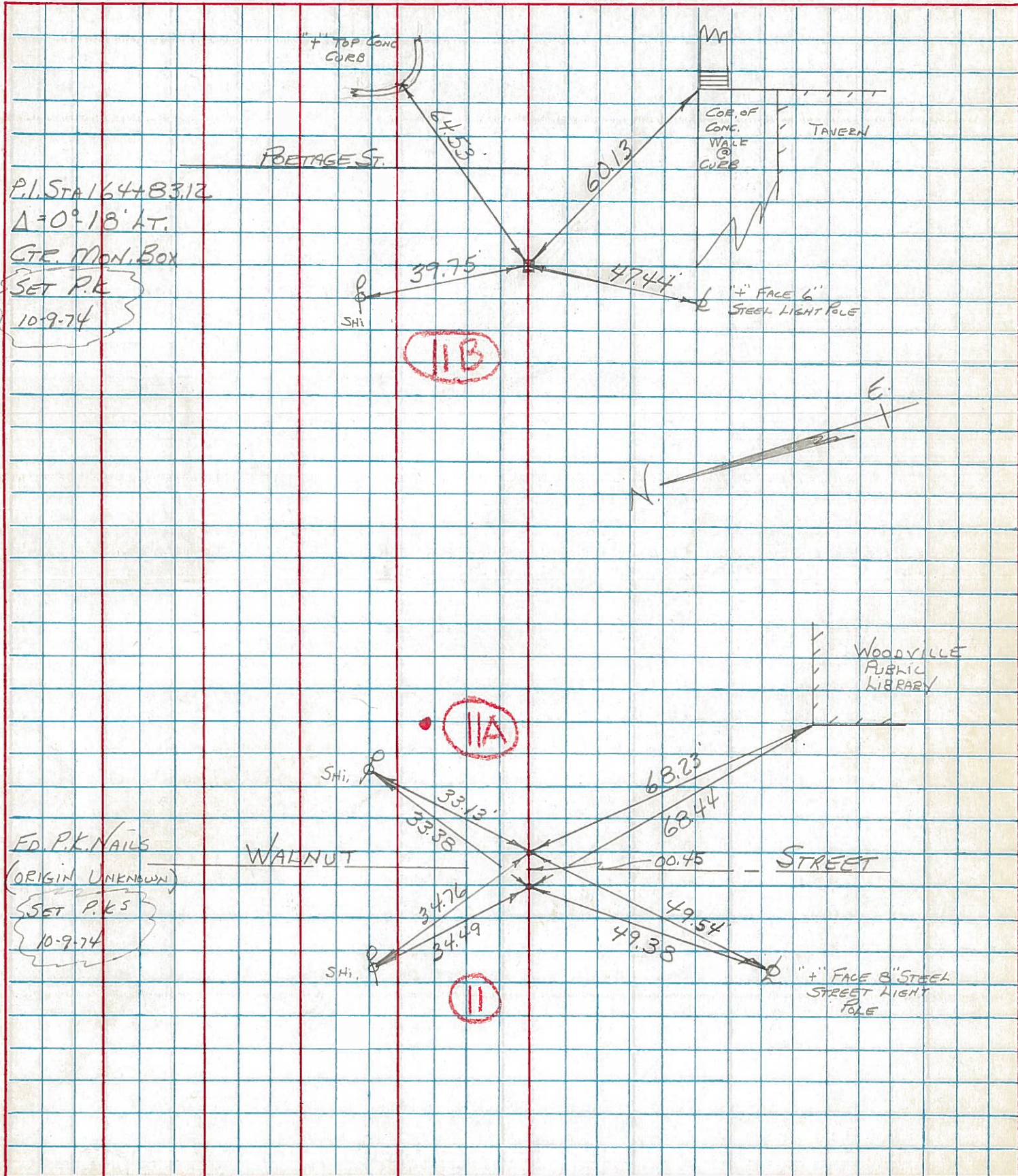
(END POINT CHECK)

JOB NO. _____

LEFT

CENTER LINE

RIGHT



P.I. STA 164+83.12

$\Delta = 0^{\circ} 18' \text{ LT.}$

C.T.E. MON. BOX

SET P.K.

10-9-74

II B

FD. P.K. NAILS

(ORIGIN UNKNOWN)

SET P.K.S

10-9-74

II A

II

PERSONNEL TITLE PERSONNEL TITLE

COUNTY Sandusky DATE 9-21-66

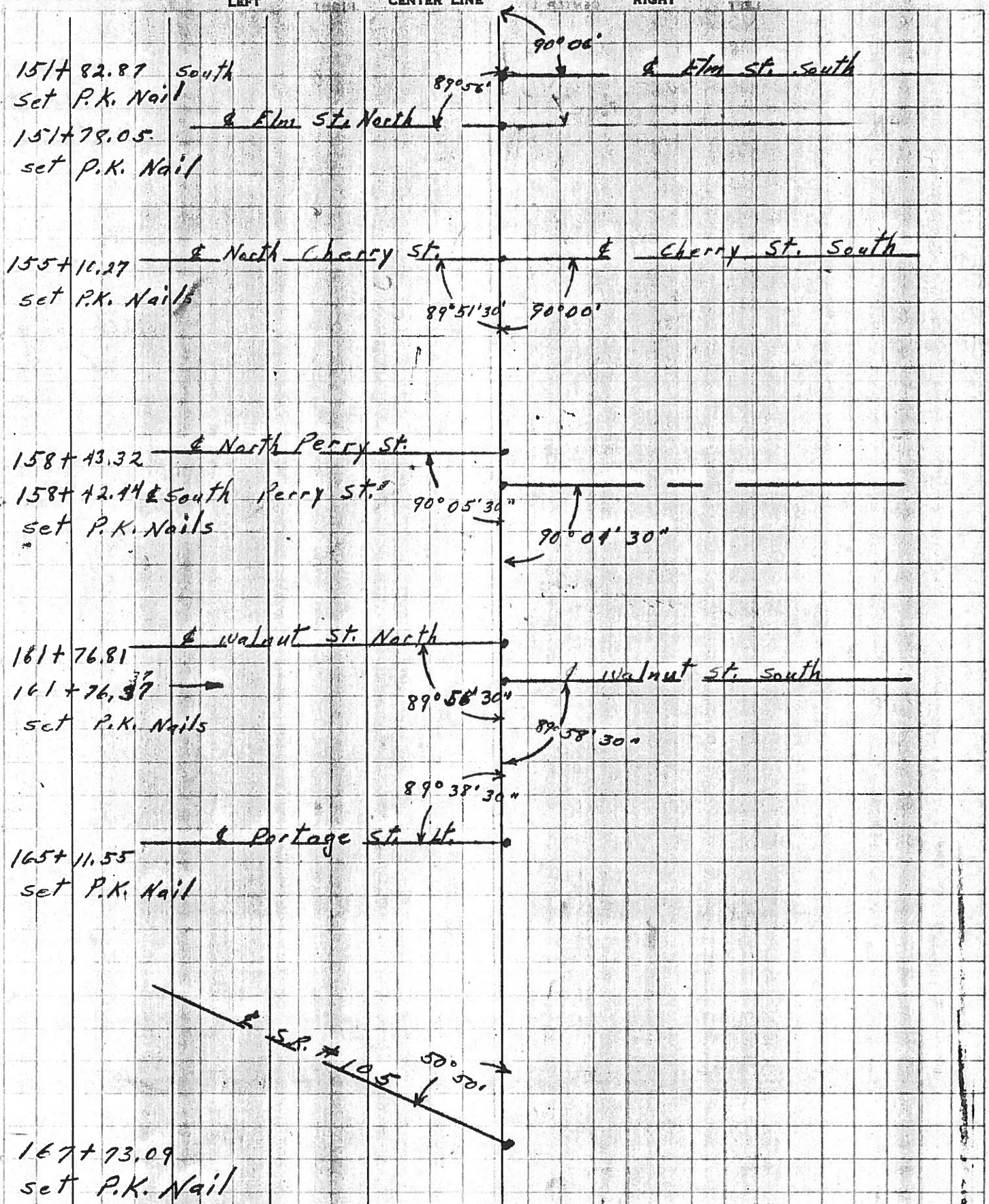
Schneider

S. R. U.S. # 20 WEATHER cloudy

Crew

SEC. 2.24 - 3.70 TEMP. 65°

DESCRIPTION SHORTS CENTER LINE RIGHT JOB NO.



151+82.87 South
set P.K. Nail

151+79.05
set P.K. Nail

155+10.27
set P.K. Nails

158+43.32
158+42.14
set P.K. Nails

161+76.81
161+76.37
set P.K. Nails

165+11.55
set P.K. Nail

167+73.09
set P.K. Nail