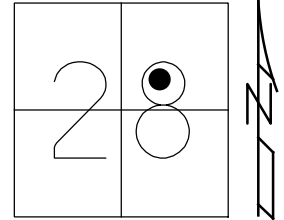


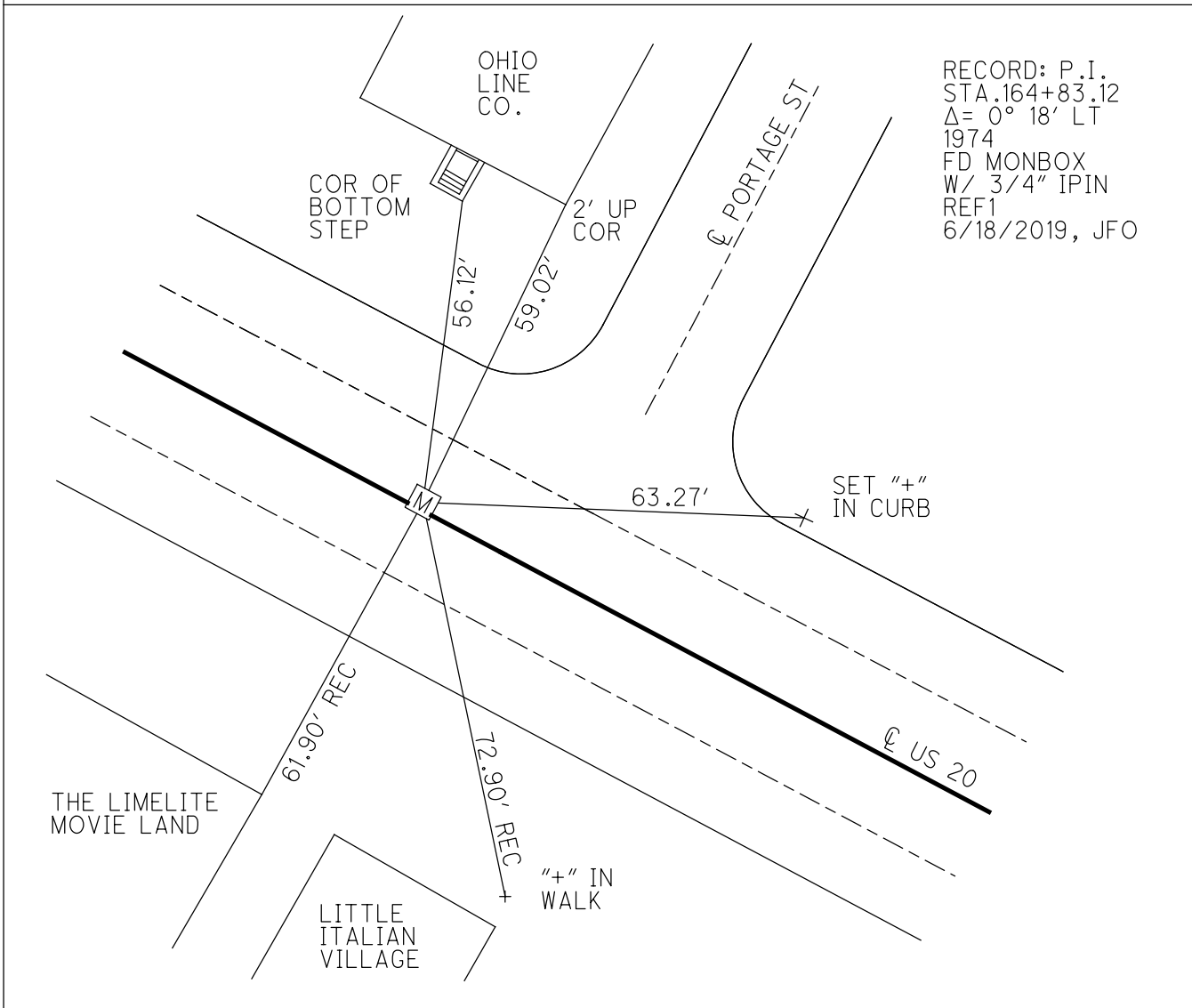
O.D.O.T. DISTRICT 2 SURVEY OFFICE (USE ONLY)

PERSONNEL _____ REFERENCE NO. 11 B SHEET 1 OF 33
 NOTES MILLER DATE 6-18-2019 ROUTE US 20
 H.C. O'DONNELL WEATHER SUNNY COUNTY SANDUSKY
 R.C. AUBLE TEMP. 66° F TOWNSHIP WOODVILLE
 RHOADES SECTION 28
 DWG BY AUBLE PID 95718 T 6 N R 13 E

TYPE MONUMENT MONBOX W/ 3/4" IPIN
 ON SURFACE - ~~BELOW~~ ON _____
 OFFSET \varnothing PAVEMENT 1.0' LT : ~~RT~~
44.3' TO RT EDGE PAVEMENT
 STATION: 164+92



HORIZ.DATUM: NAD83 (2011) GEOID: 2012A
 GRID: NORTHING: 650925.349 EASTING: 1732142.662

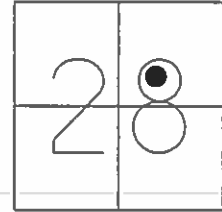


RECORD: P.I.
 STA. 164+83.12
 $\Delta = 0^\circ 18' \text{ LT}$
 1974
 FD MONBOX
 W/ 3/4" IPIN
 REF1
 6/18/2019, JFO

O.D.O.T. DISTRICT 2 SURVEY OFFICE (USE ONLY)

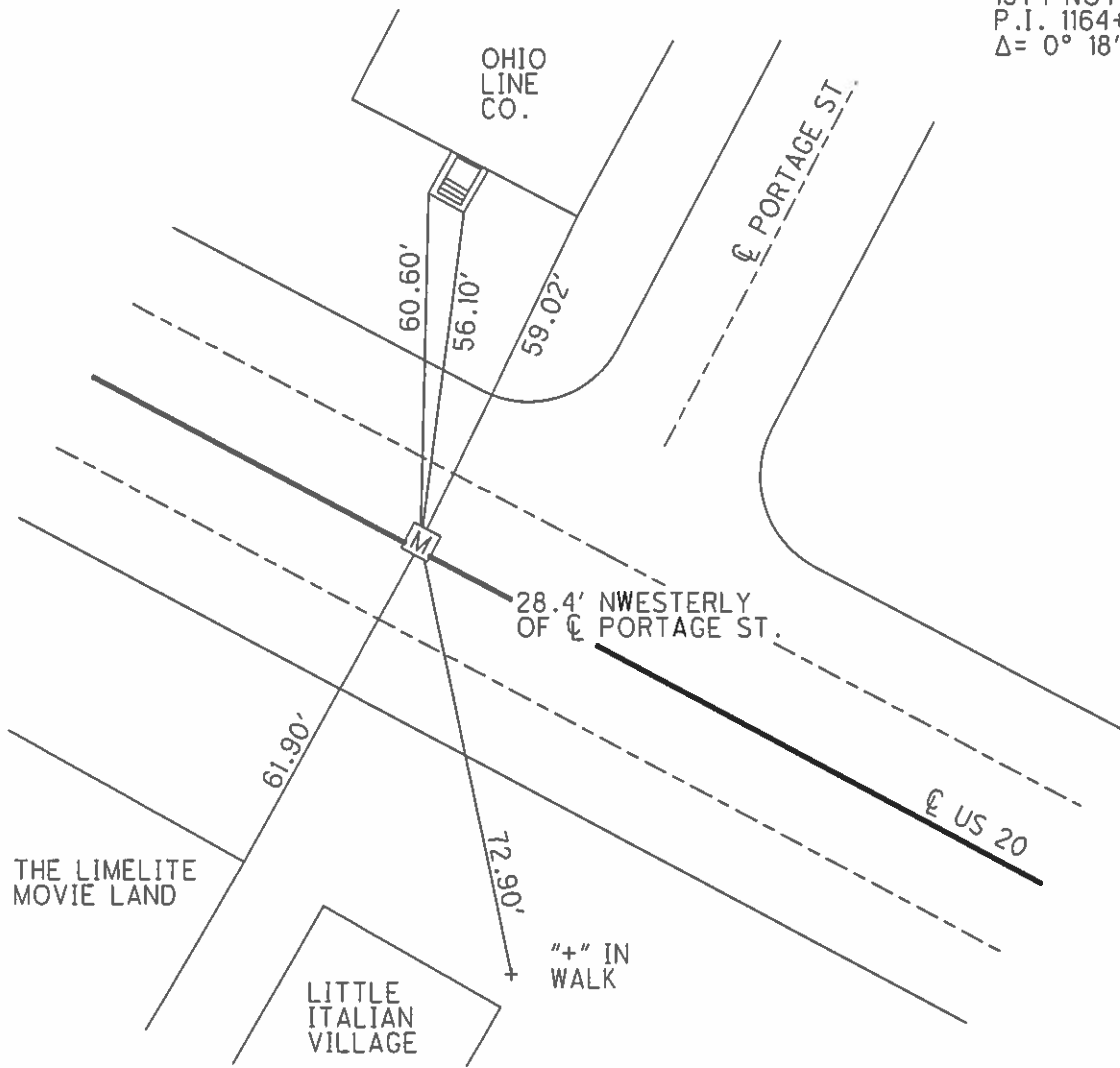
PERSONNEL _____ REFERENCE NO. 1 SHEET 1 OF 33
 NOTES HARBAUGH DATE 6/16/11 ROUTE US 20
 H.C. MOSER WEATHER PTLY CLDY COUNTY SANDUSKY
 R.C. FINGER TEMP. 70° TOWNSHIP WOODVILLE
 SECTION 28
 T 6 N R 13 E

TYPE MONUMENT MON BOX
 ON SURFACE - ~~BELOW~~ ON _____
 LEFT - ☉ PAV'T - ~~RIGHT~~ 1'
44.3' TO RT EDGE PAVEMENT (31.1' TO LT CURB)
 S.L.M. 164+92



GRID: NORTHING: _____ EASTING: _____

1974 NOTES:
 P.I. 1164+83.12
 $\Delta = 0^\circ 18' \text{ LT}$



O.D.O.T. DISTRICT 2 SURVEY OFFICE

PERSONNEL

REFERENCE NO. 1

SHEET 1 OF 33

NOTES HARBAUGH

DATE 6/16/11

ROUTE US 20

H.C. MOSER

WEATHER PTLY CLDY

COUNTY SANDUSKY

R.C. FINGER

TEMP. 70°

TOWNSHIP WOODVILLE

SECTION 28

T 6 N R 13 E

TYPE MONUMENT MON.BOX

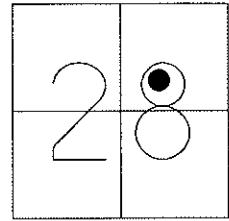
ON SURFACE - ~~BELOW~~ ON

LEFT - ☉ PAV'T - ~~RIGHT~~ 1'

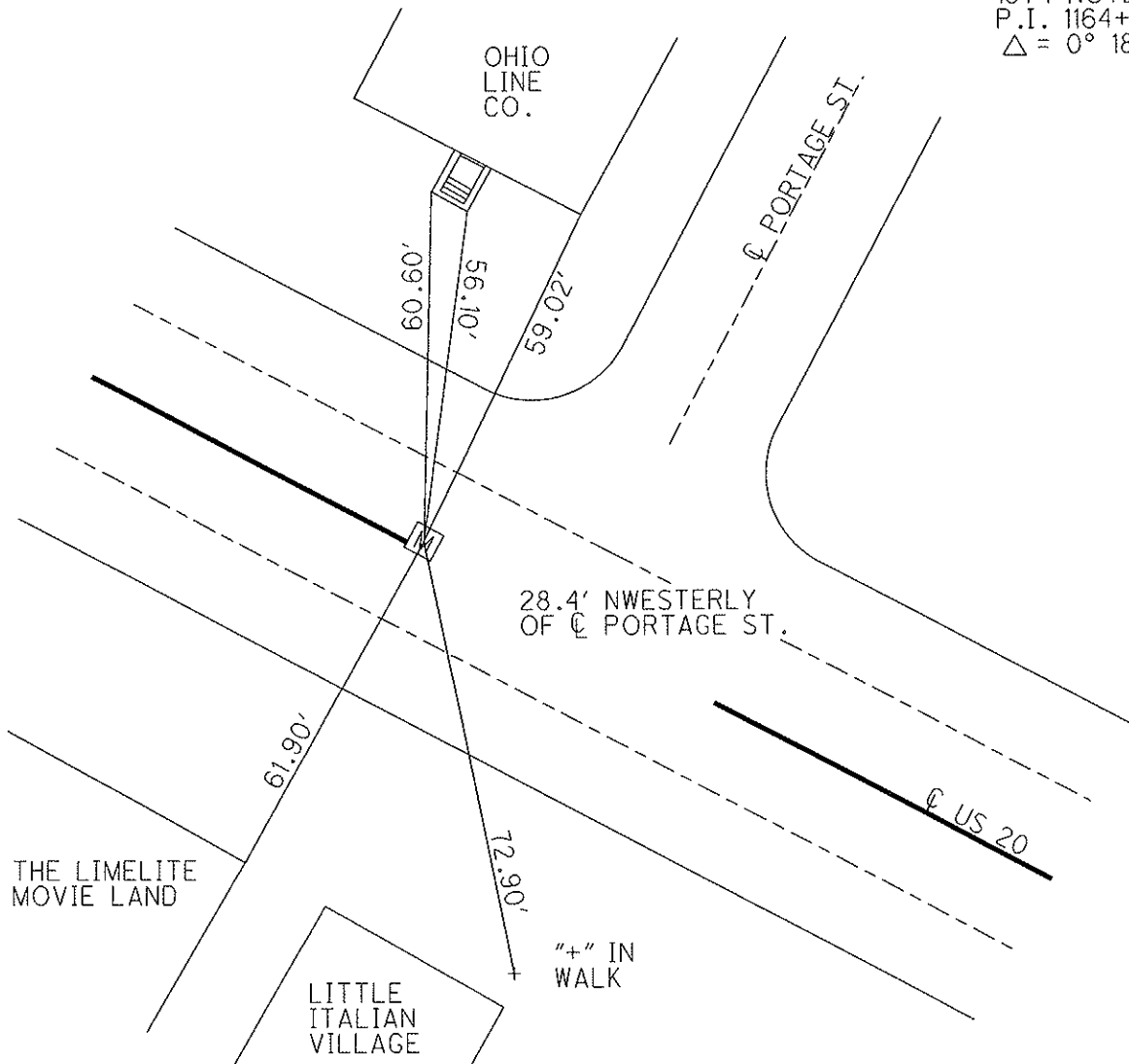
44.3' TO RT EDGE PAVEMENT (31.1' to LT. CURB)

S.L.M. 164+92

Grid: Northing: _____ Easting: _____



1974 NOTES:
P.I. 1164+83.12
 $\Delta = 0^{\circ} 18' \text{ LT}$



O.D.O.T. DISTRICT 2 SURVEY OFFICE

PERSONNEL

REFERENCE NO. _____

SHEET 9 OF _____

NOTES HOFFMAN

H.C. BARNHISEL

R.C. _____

DATE 4-25-91

WEATHER P. Cloudy

TEMP. 60°

ROUTE US 20

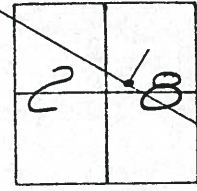
COUNTY SANDUSKY

TOWNSHIP WOODVILLE

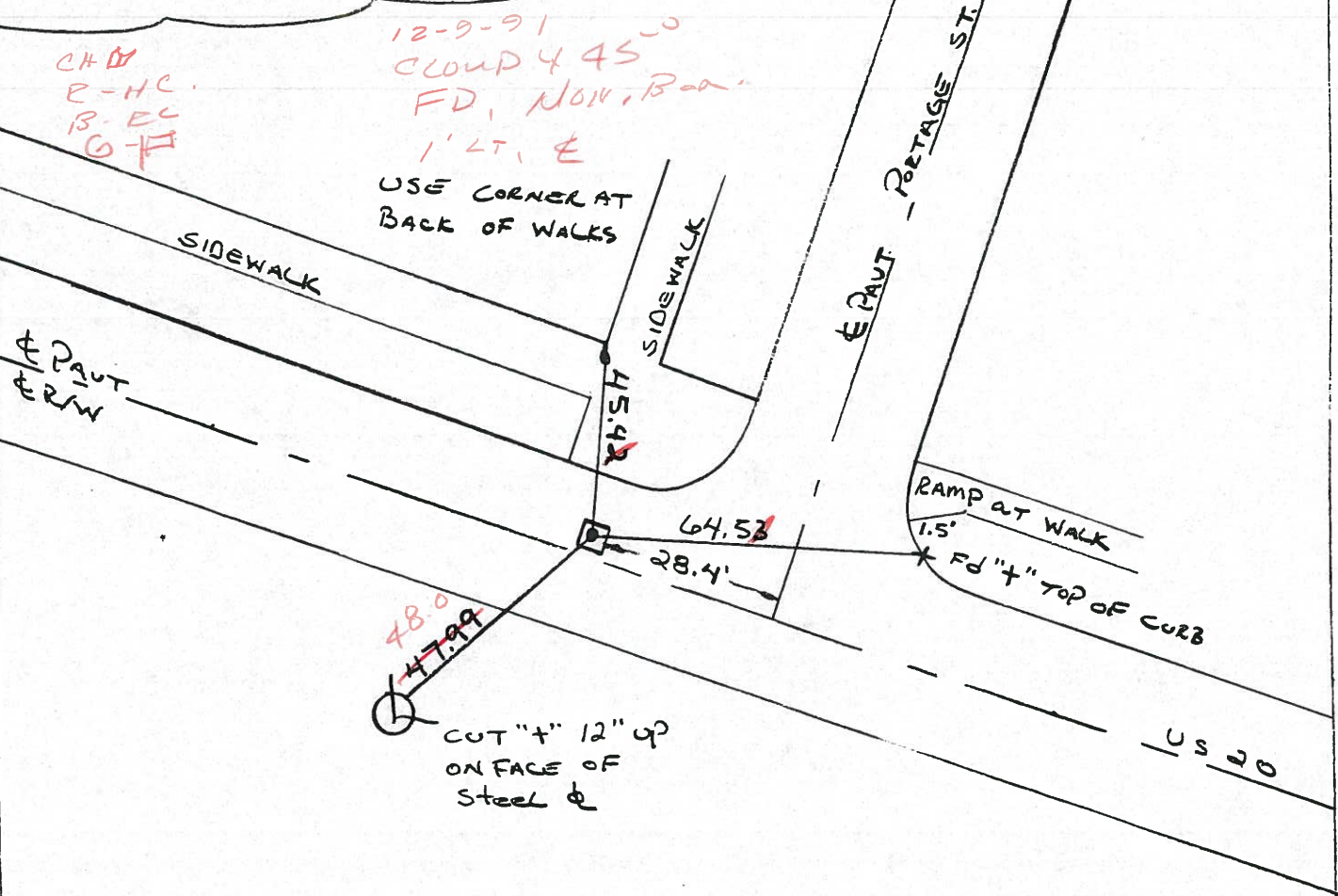
SECTION 28

T. 6 N. R. 13 E

TYPE MONUMENT I. PIN IN MONUMENT BOX
~~ON SURFACE~~ - BELOW 2"
 LEFT- & PAV'T. - RIGHT 1'
44.3 TO RT. EDGE PAVEMENT & 33.1 TO LT. CURB
 S.L.M. 165 + 43.75



RECORD: P.I. 164 + 83.12 } 1974 Ref. Notes
 $\Delta = 0^\circ - 18' \text{ LT}$



O.D.O.T. DISTRICT 2 SURVEY OFFICE

PERSONNEL

REFERENCE NO. _____

SHEET 9 OF _____

NOTES HOFFMAN

H.C. BARNHISEL

R.C. _____

DATE 4-25-91

WEATHER P. Cloudy

TEMP. 60°

ROUTE US 20

COUNTY SANDUSKY

TOWNSHIP WOODVILLE

SECTION 28

T. 6 N. R. 13 E

TYPE MONUMENT I. PIN IN MONUMENT BOX

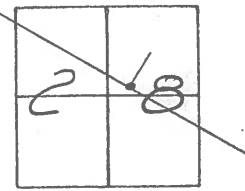
~~ON SURFACE~~ - BELOW 2"

LEFT- & PAVT. - RIGHT _____

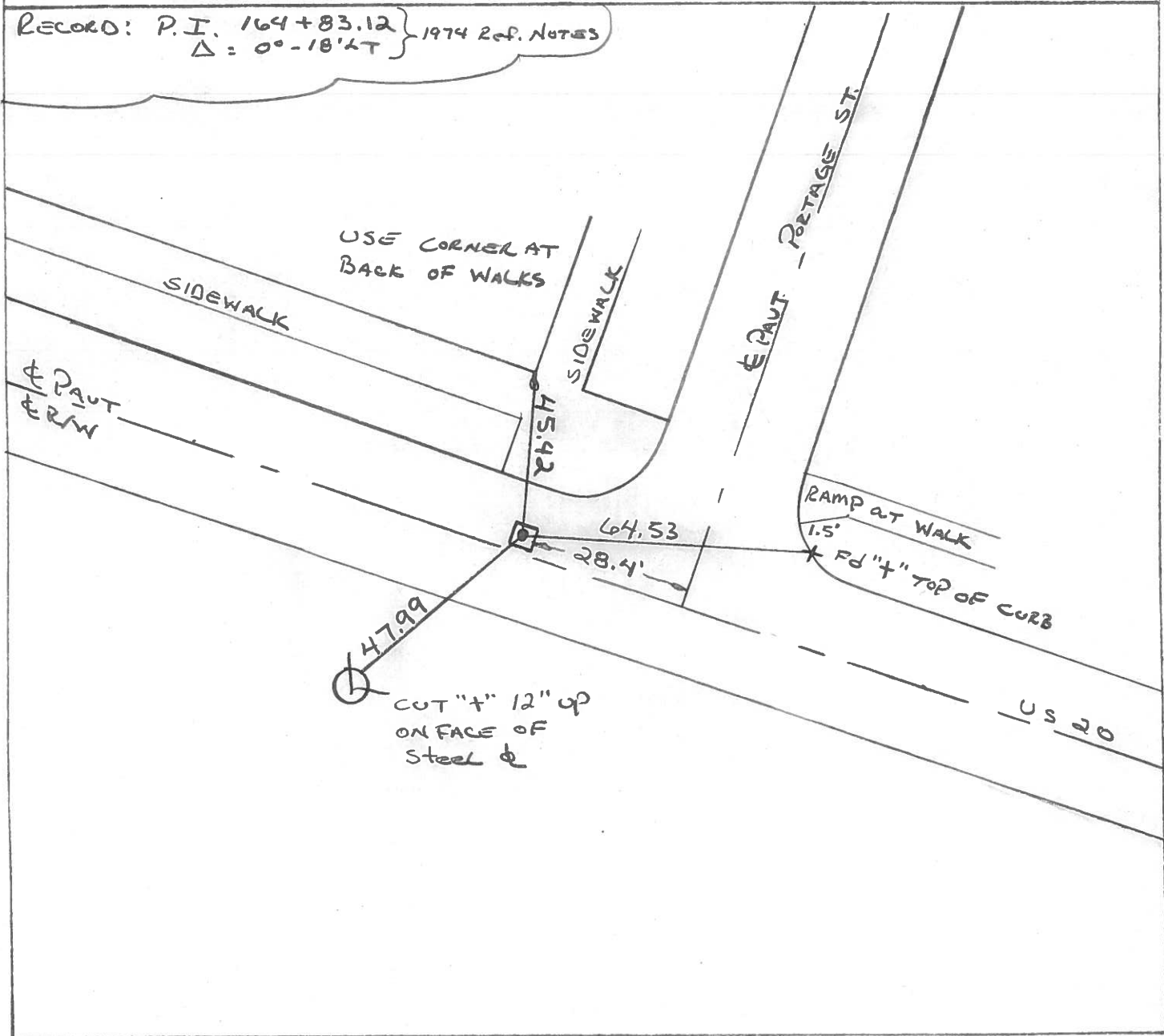
44.3 TO RT EDGE PAVEMENT 1/2 33.1 TO LT. CURB

S.L.M. 165+43.75

(116)



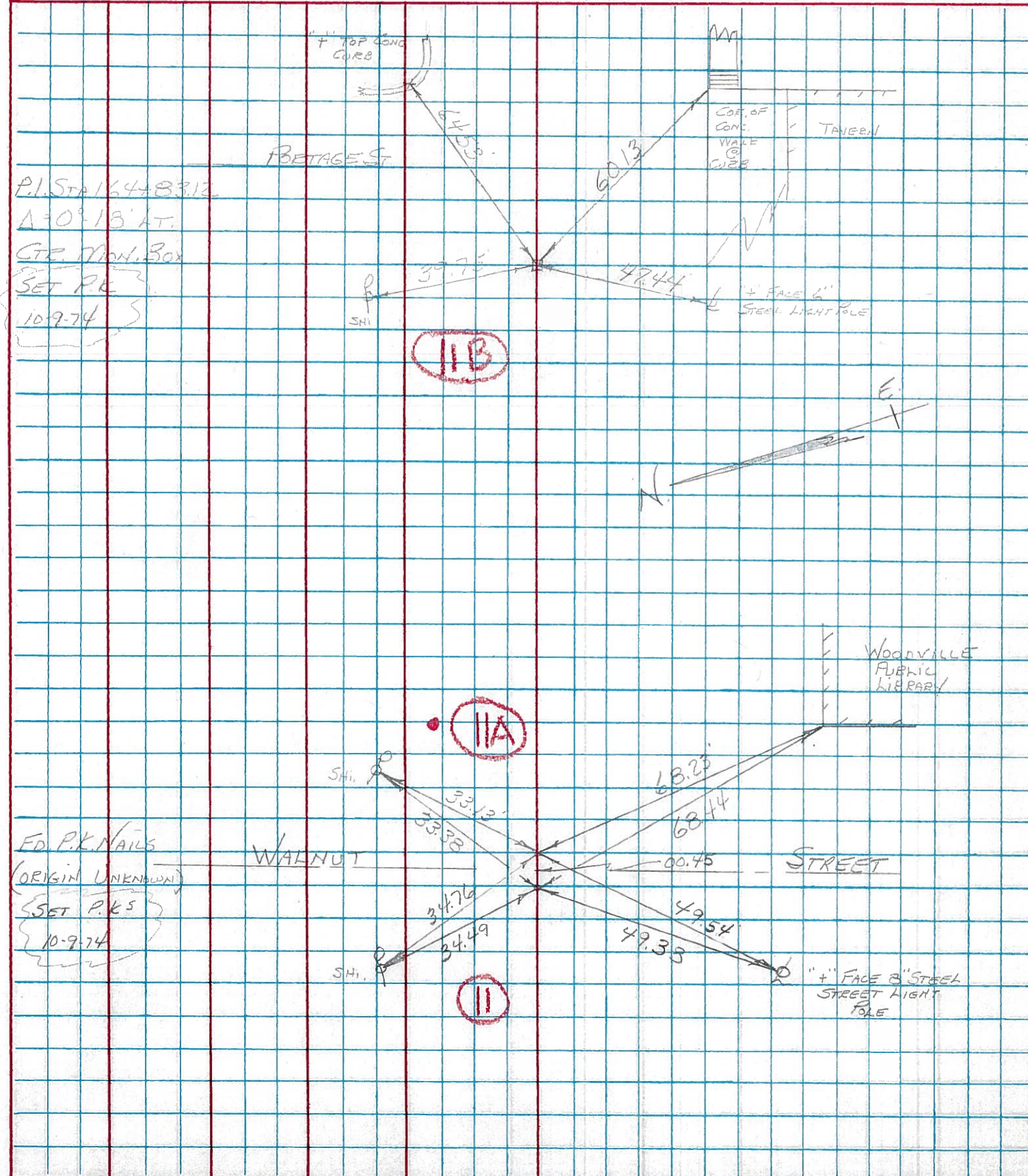
RECORD: P.I. 164+83.12 } 1974 Ref. NOTES
 $\Delta = 0^\circ - 18' \text{ LT}$



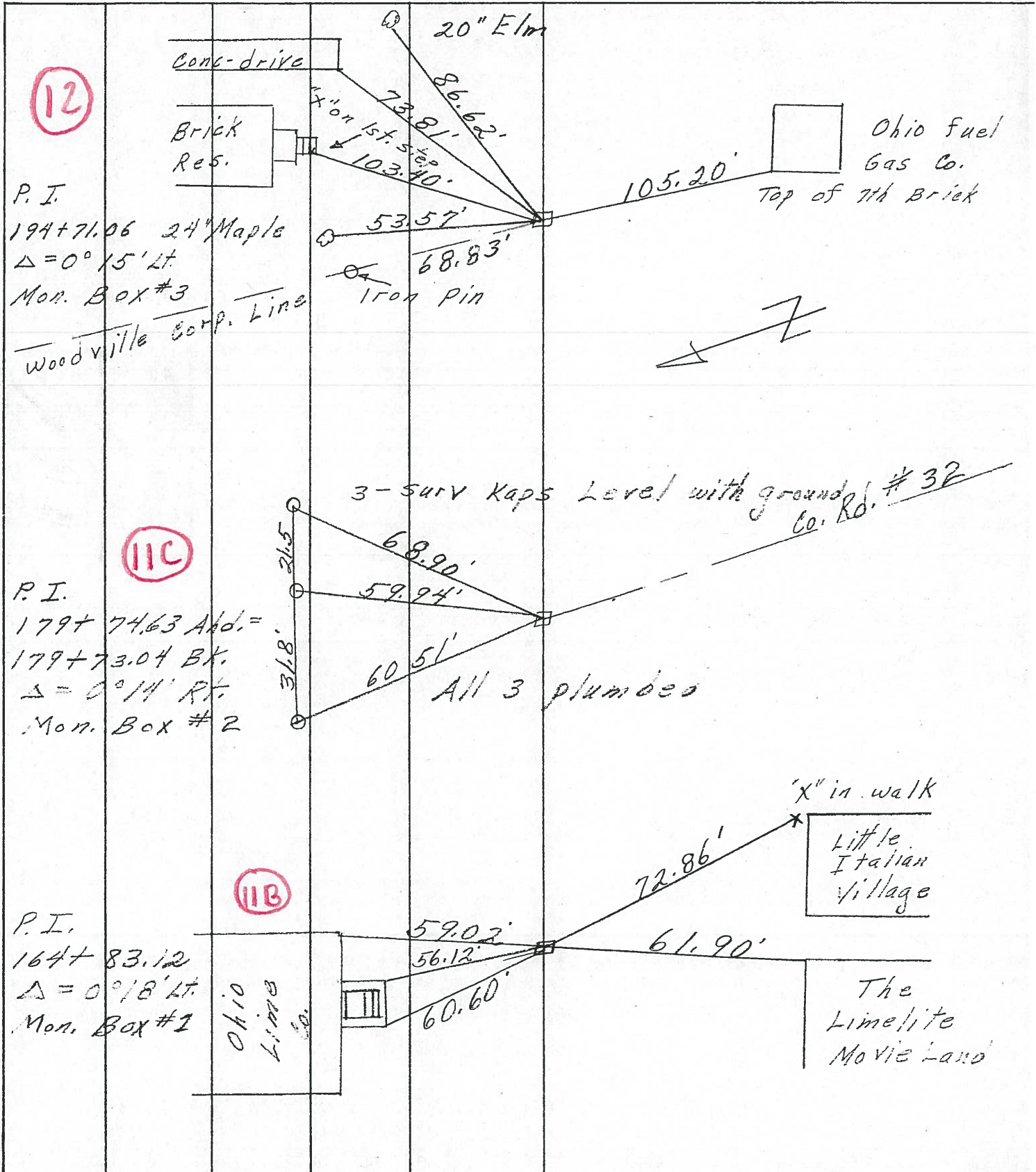
PERSONNEL	TITLE	PERSONNEL	TITLE	COUNTY	DATE
BURNSIDE				SANDUSKY	7-9-74
SMITH				S. R. - U.S. 20	WEATHER CLEAR
BOWERS				SEC. WOODVILLE CORP.	TEMP. +94°
KIJOWSKI					

DESCRIPTION CONTROL TIES (END POINT CHECK) JOB NO.

LEFT CENTER LINE RIGHT



PERSONNEL	TITLE	PERSONNEL	TITLE	COUNTY	DATE	S. R.	WEATHER	SEC.	TEMP.
<i>Conner</i>		<i>Winters</i>		<i>Sandusky</i>	<i>7-21-71</i>	<i>U.S. # 20</i>	<i>Fair</i>	<i>3.10 - 3.70</i>	<i>80°</i>
DESCRIPTION <i>Sec 28 Woodville Twp.</i>				JOB NO.					



PERSONNEL TITLE PERSONNEL TITLE

COUNTY Sandusky DATE 9-21-66

Schneider

S. R. U.S. # 20 WEATHER cloudy

Crew

SEC. 2.24 - 3.70 TEMP. 65°

DESCRIPTION SHORTS CENTER LINE RIGHT JOB NO.

