

O.D.O.T. DISTRICT 2 SURVEY OFFICE (USE ONLY)

PERSONNEL

REFERENCE NO. 11 C

SHEET 2 OF 32

NOTES NIESE

DATE 3/9/23

ROUTE US 20

H.C. AUBLE

WEATHER SUNNY

COUNTY SANDUSKY

R.C. NIESE

TEMP. 40°

TOWNSHIP WOODVILLE

RHOADES

DWG BY RHOADES PID 110021

SECTION 28

T 6 N R 13 E

TYPE MONUMENT MAG/WASHER

ON SURFACE - ~~BELOW~~ ON

OFFSET 0 PAVEMENT ON LT : RT

25.7' TO RT EDGE PAVEMENT

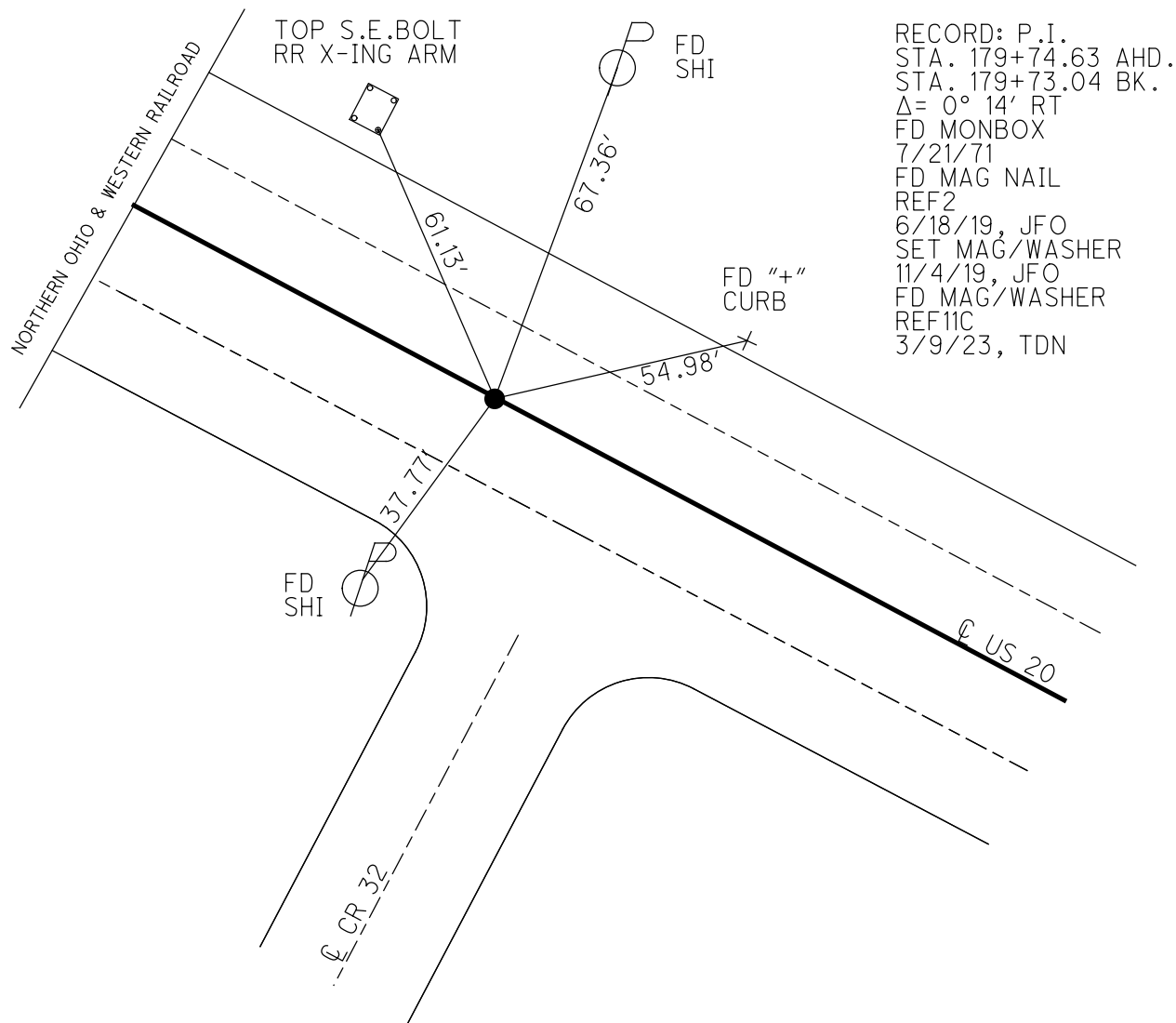
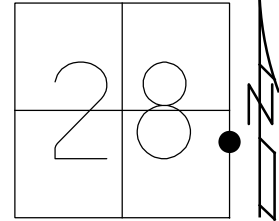
STATION: 179+74

HORIZ.DATUM: NAD83 (2011)

GEOID: NAVD88 2018

GRID: NORTHING: 650204.366

EASTING: 1733446.520

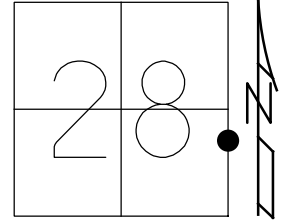


RECORD: P.I.  
 STA. 179+74.63 AHD.  
 STA. 179+73.04 BK.  
 $\Delta = 0^\circ 14' RT$   
 FD MONBOX  
 7/21/71  
 FD MAG NAIL  
 REF2  
 6/18/19, JFO  
 SET MAG/WASHER  
 11/4/19, JFO  
 FD MAG/WASHER  
 REF11C  
 3/9/23, TDN

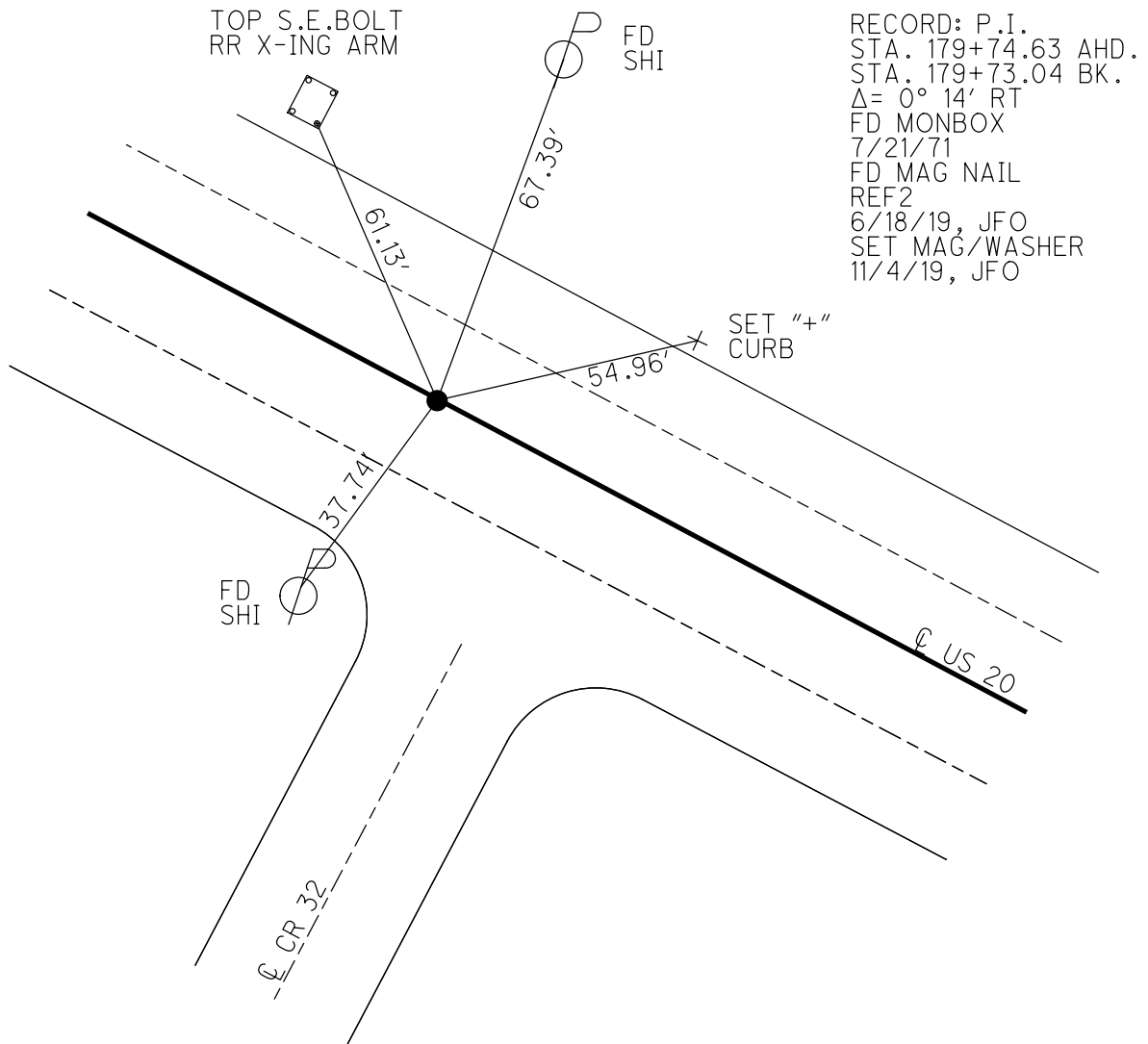
O.D.O.T. DISTRICT 2 SURVEY OFFICE (USE ONLY)

PERSONNEL \_\_\_\_\_ REFERENCE NO. 11 C SHEET 2 OF 33  
 NOTES MILLER DATE 6-18-2019 ROUTE US 20  
 H.C. O'DONNELL WEATHER SUNNY COUNTY SANDUSKY  
 R.C. AUBLE TEMP. 66° F TOWNSHIP WOODVILLE  
           RHOADES SECTION 28  
 DWG BY AUBLE PID 95718 T 6 N R 13 E

TYPE MONUMENT MAG NAIL  
 ON SURFACE - ~~BELOW~~ ON \_\_\_\_\_  
 OFFSET  $\varnothing$  PAVEMENT ON \_\_\_\_\_ LT : RT  
25.7' TO RT EDGE PAVEMENT  
 STATION: 179+74



HORZ.DATUM: NAD83 (2011) GEOID: 2012A  
 GRID: NORTHING: 650204.375 EASTING: 1733446.567

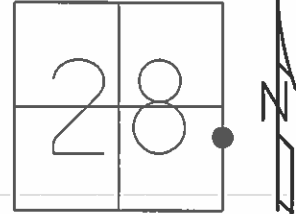


RECORD: P.I.  
 STA. 179+74.63 AHD.  
 STA. 179+73.04 BK.  
 $\Delta = 0^\circ 14' RT$   
 FD MONBOX  
 7/21/71  
 FD MAG NAIL  
 REF2  
 6/18/19, JFO  
 SET MAG/WASHER  
 11/4/19, JFO

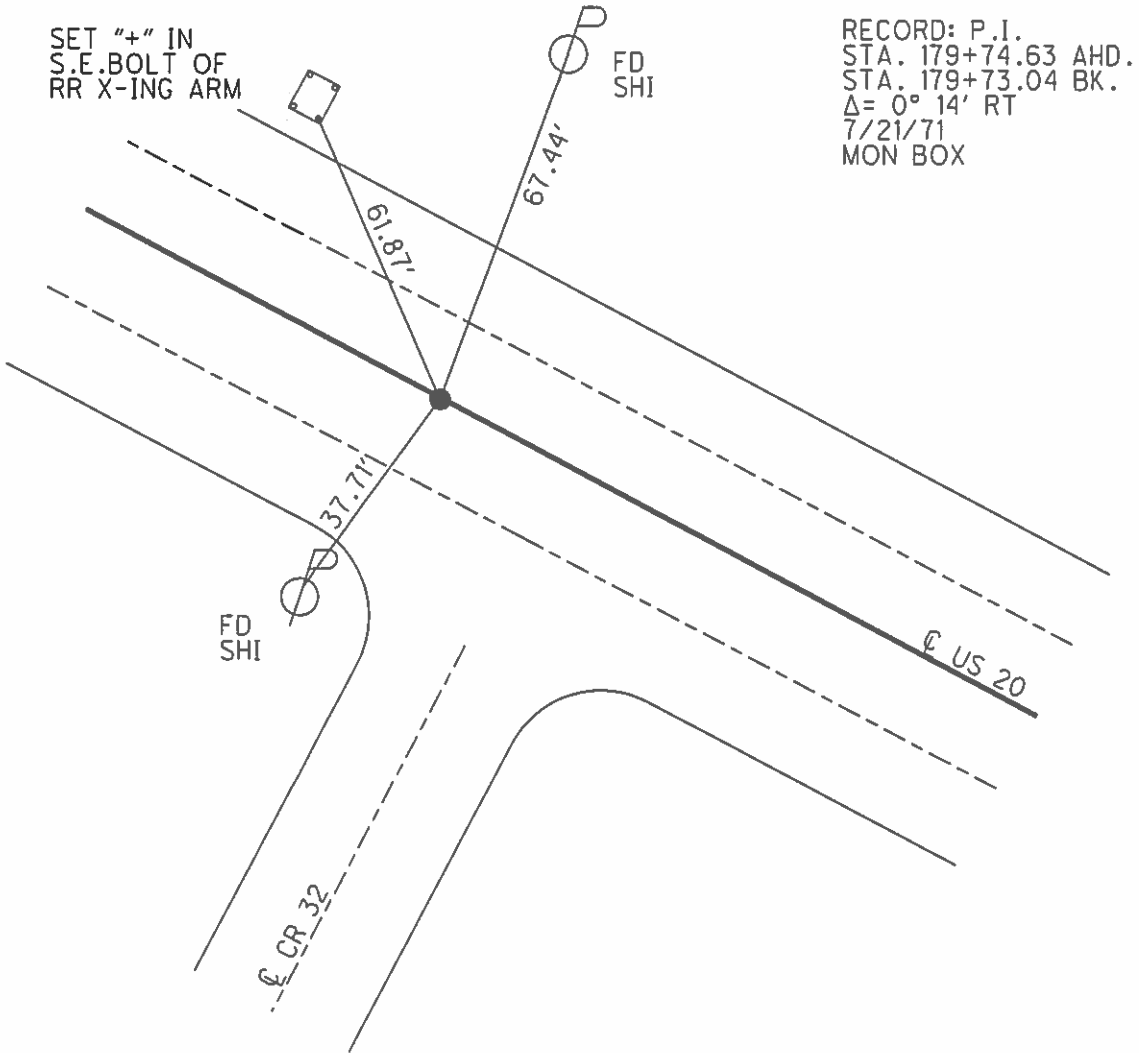
O.D.O.T. DISTRICT 2 SURVEY OFFICE (USE ONLY)

PERSONNEL \_\_\_\_\_ REFERENCE NO. 2 SHEET 2 OF 33  
 NOTES HARBAUGH DATE 6/16/11 ROUTE US 20  
 H.C. MOSER WEATHER PTLY CLDY COUNTY SANDUSKY  
 R.C. FINGER TEMP. 70° TOWNSHIP WOODVILLE  
 \_\_\_\_\_ SECTION 28  
 \_\_\_\_\_ T 6 N R 13 E

TYPE MONUMENT P.K. NAIL  
 ON SURFACE - ~~BELOW~~ ON  
 LEFT - ☉ PAV'T - RIGHT ON  
25.7' TO RT EDGE PAVEMENT  
 S.L.M. 179+74



GRID: NORTHING: 650204.341 EASTING: 1733446.428



RECORD: P.I.  
 STA. 179+74.63 AHD.  
 STA. 179+73.04 BK.  
 $\Delta = 0^\circ 14' RT$   
 7/21/71  
 MON BOX

O.D.O.T. DISTRICT 2 SURVEY OFFICE

PERSONNEL

REFERENCE NO. 2

SHEET 2 OF 33

NOTES HARBAUGH

DATE 6/16/11

ROUTE US 20

H.C. MOSER

WEATHER PTLY CLDY

COUNTY SANDUSKY

R.C. FINGER

TEMP. 70°

TOWNSHIP WOODVILLE

SECTION 28

T 6 N R 13 E

TYPE MONUMENT P.K.NAIL

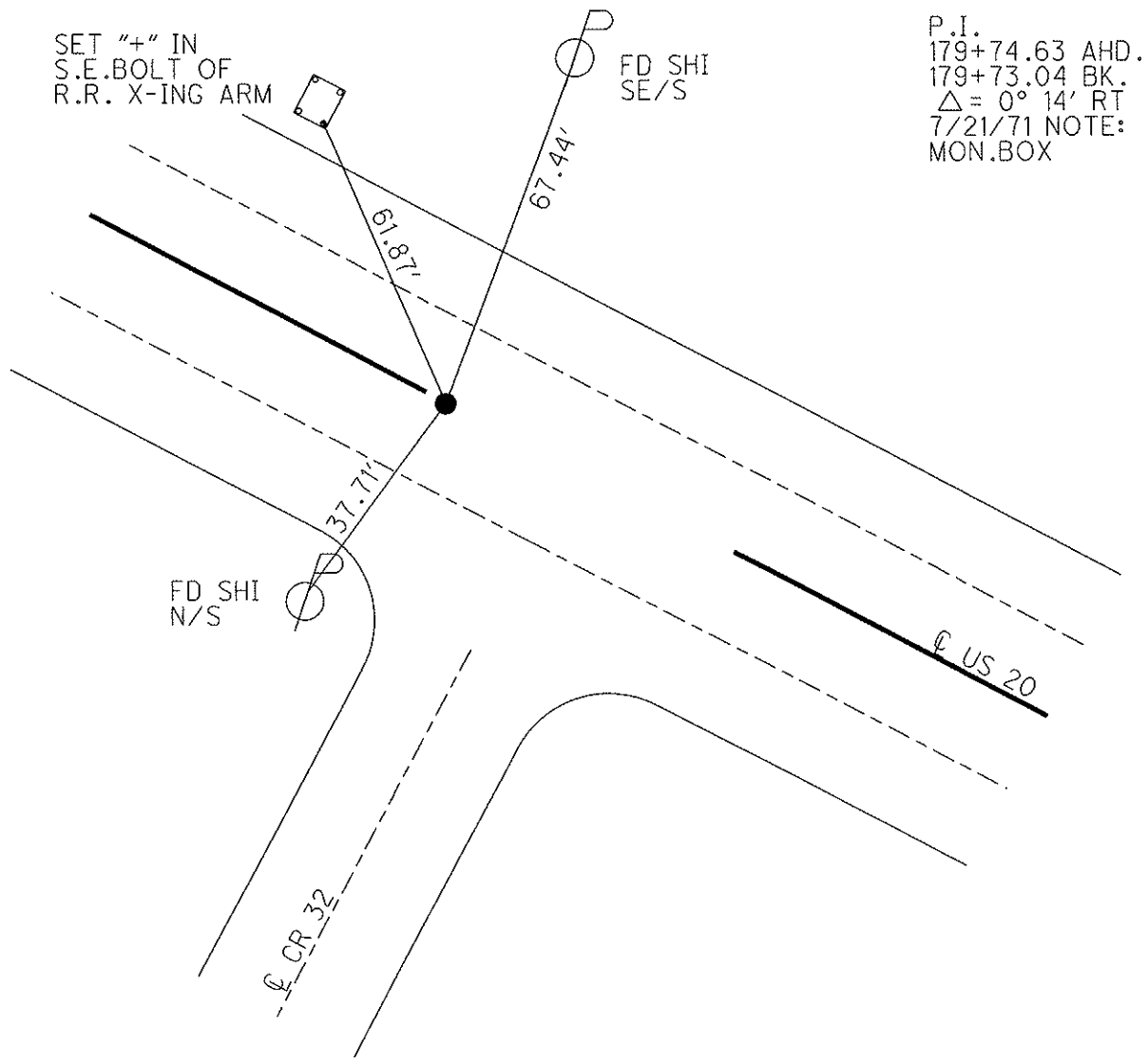
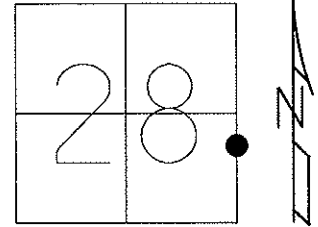
ON SURFACE - ~~BELOW~~ ON

LEFT - CL PAV'T - RIGHT ON

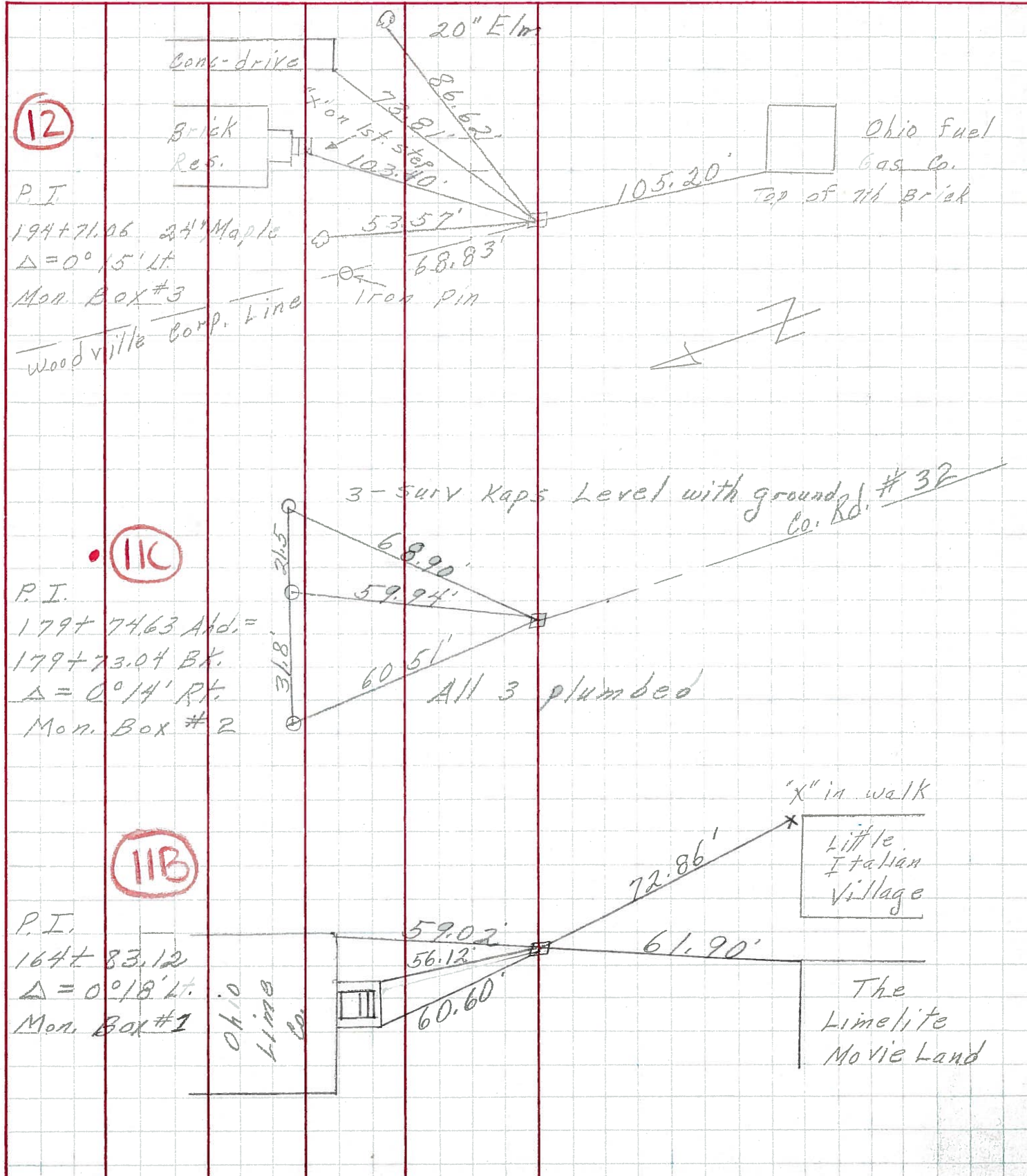
25.7' TO RT EDGE PAVEMENT

S.L.M. 179+74

Grid: Northing: 650204.341 Easting: 1733446.428



PERSONNEL	TITLE	PERSONNEL	TITLE	COUNTY	DATE
<u>Schneider</u>		<u>Vinson</u>		<u>Sandusky</u>	<u>7-21-71</u>
<u>Mosser</u>				S. R. <u>U.S. # 20</u>	WEATHER <u>Fair</u>
<u>Barbour</u>				SEC. <u>3.10 - 3.70</u>	TEMP. <u>80°</u>
<u>Geymer</u>					
DESCRIPTION	<u>Sec 28 Woodville Twp.</u>			JOB NO.	
	LEFT	CENTER LINE	RIGHT		



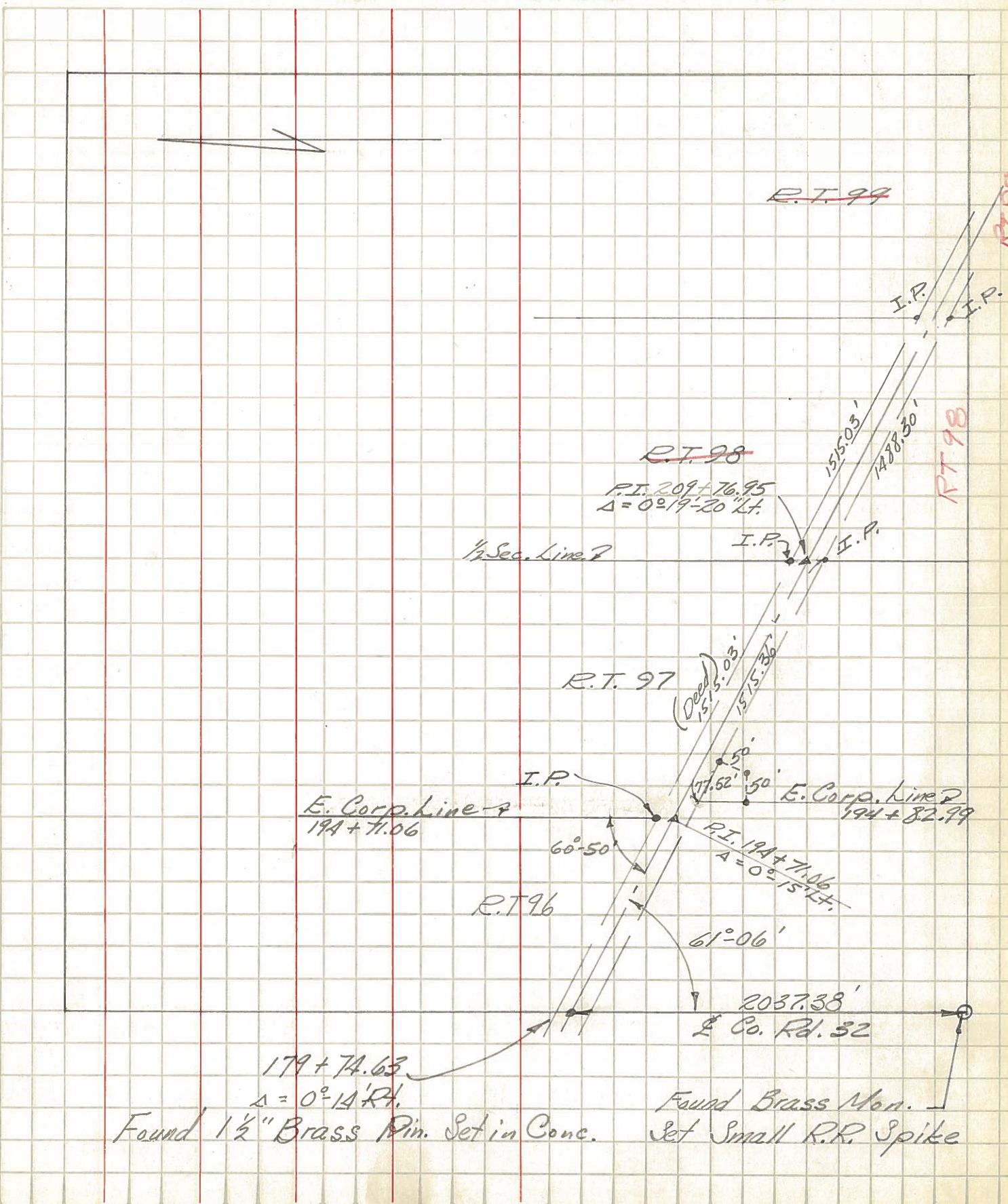
PERSONNEL TITLE PERSONNEL TITLE

COUNTY Sandusky DATE

S. R. 20 WEATHER

SEC. 27-Woodville Twp TEMP.

DESCRIPTION LEFT CENTER LINE RIGHT JOB NO.

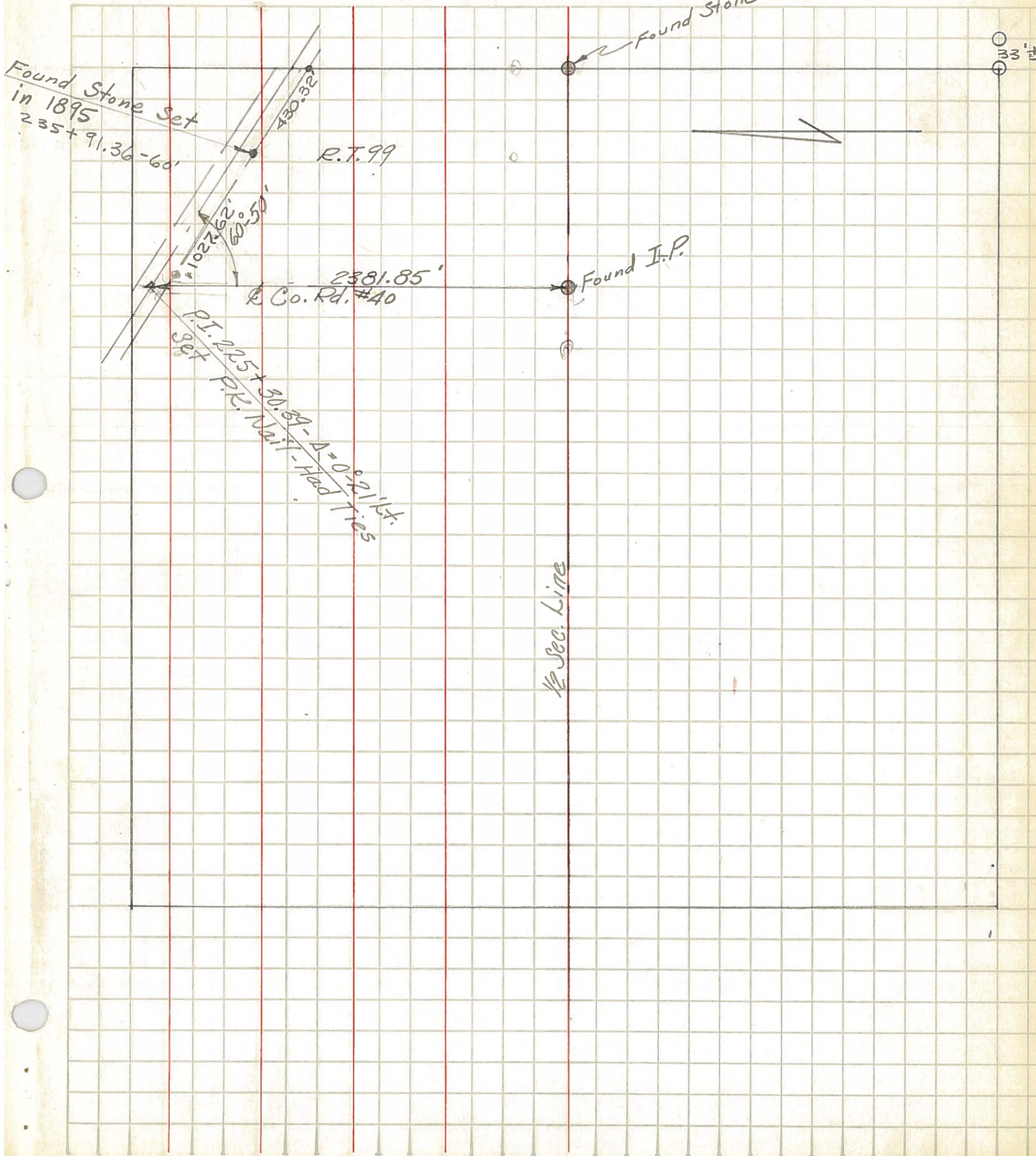


179+74.63  
 $\Delta = 0^\circ-14' Rt.$   
 Found  $1\frac{1}{2}$ " Brass Pin. Set in Conc.

Found Brass Mon.  
 Set Small R.R. Spike

PERSONNEL	TITLE	PERSONNEL	TITLE
COUNTY <u>Sandusky</u> DATE _____			
S. R. <u>20</u> WEATHER _____			
SEC. <u>34 - Woodville Twp.</u> TEMP. _____			

DESCRIPTION \_\_\_\_\_ LEFT \_\_\_\_\_ CENTER LINE \_\_\_\_\_ RIGHT \_\_\_\_\_ JOB NO. \_\_\_\_\_



PERSONNEL TITLE PERSONNEL TITLE COUNTY Sandusky DATE 2/11/63  
Morrison \_\_\_\_\_ S. R. 20 WEATHER \_\_\_\_\_  
 \_\_\_\_\_ \_\_\_\_\_ SEC. 28-Woodville Twp. TEMP. \_\_\_\_\_

DESCRIPTION \_\_\_\_\_ LEFT \_\_\_\_\_ CENTER LINE \_\_\_\_\_ RIGHT \_\_\_\_\_ JOB NO. \_\_\_\_\_

