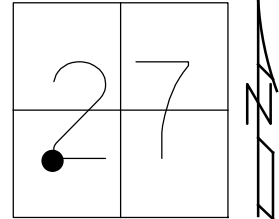


O.D.O.T. DISTRICT 2 SURVEY OFFICE (USE ONLY)

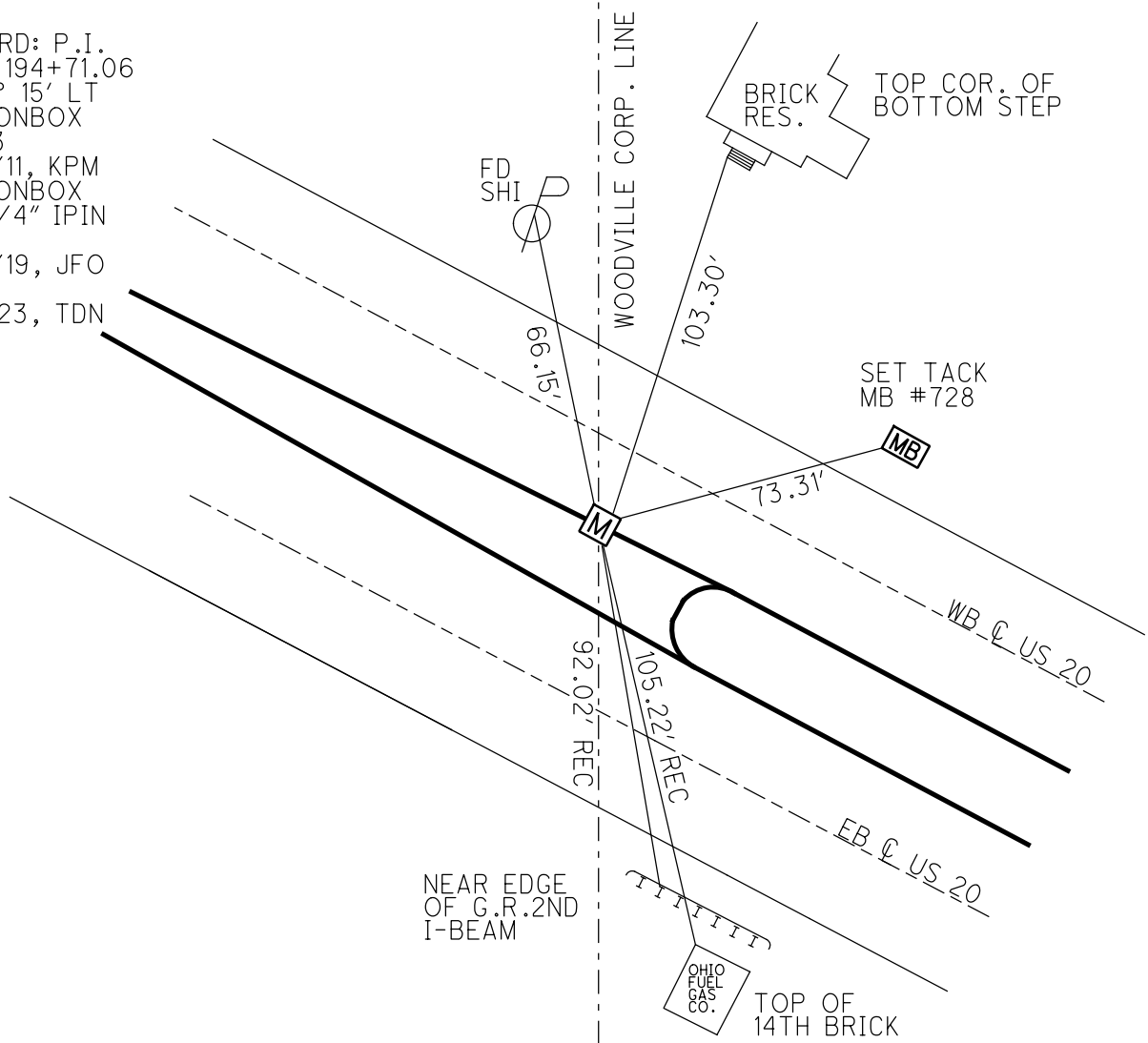
PERSONNEL _____ REFERENCE NO. 12 SHEET 3 OF 32
 NOTES NIESE DATE 3/9/23 ROUTE US 20
 H.C. AUBLE WEATHER SUNNY COUNTY SANDUSKY
 R.C. NIESE TEMP. 40° TOWNSHIP WOODVILLE
 RHOADES SECTION 27
 DWG BY RHOADES PID 110021 T 6 N R 13 E

TYPE MONUMENT MONBOX W/ 3/4" IPIN
 ON SURFACE - ~~BELOW~~ ON _____
 OFFSET ☉ PAVEMENT ON W.B. LT. E.P. LT : ~~RT~~
22.7' TO RT EDGE PAVEMENT
 STATION: 194+79



HORIZ.DATUM: NAD83 (2011) GEOID: NAVD88 2018
 GRID: NORTHING: 649474.541 EASTING: 1734753.334

RECORD: P.I.
 STA. 194+71.06
 $\Delta = 0^\circ 15' \text{ LT}$
 FD MONBOX
 REF 3
 6/16/11, KPM
 FD MONBOX
 W/ 3/4" IPIN
 REF 3
 6/18/19, JFO
 REF 3
 3/9/23, TDN



O.D.O.T. DISTRICT 2 SURVEY OFFICE (USE ONLY)

PERSONNEL _____ REFERENCE NO. 12 SHEET 3 OF 33
 NOTES MILLER DATE 6-18-2019 ROUTE US 20
 H.C. O'DONNELL WEATHER SUNNY COUNTY SANDUSKY
 R.C. AUBLE TEMP. 73° F TOWNSHIP WOODVILLE
 RHOADES SECTION 27
 DWG BY AUBLE PID 95718 T 6 N R 13 E

TYPE MONUMENT MONBOX W/ 3/4" IPIN

ON SURFACE - ~~BELOW~~ ON

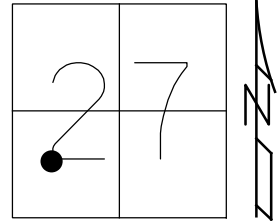
OFFSET C PAVEMENT ON W.B. LT. E.P. LT : ~~RT~~

22.7' TO ~~RT~~ EDGE PAVEMENT

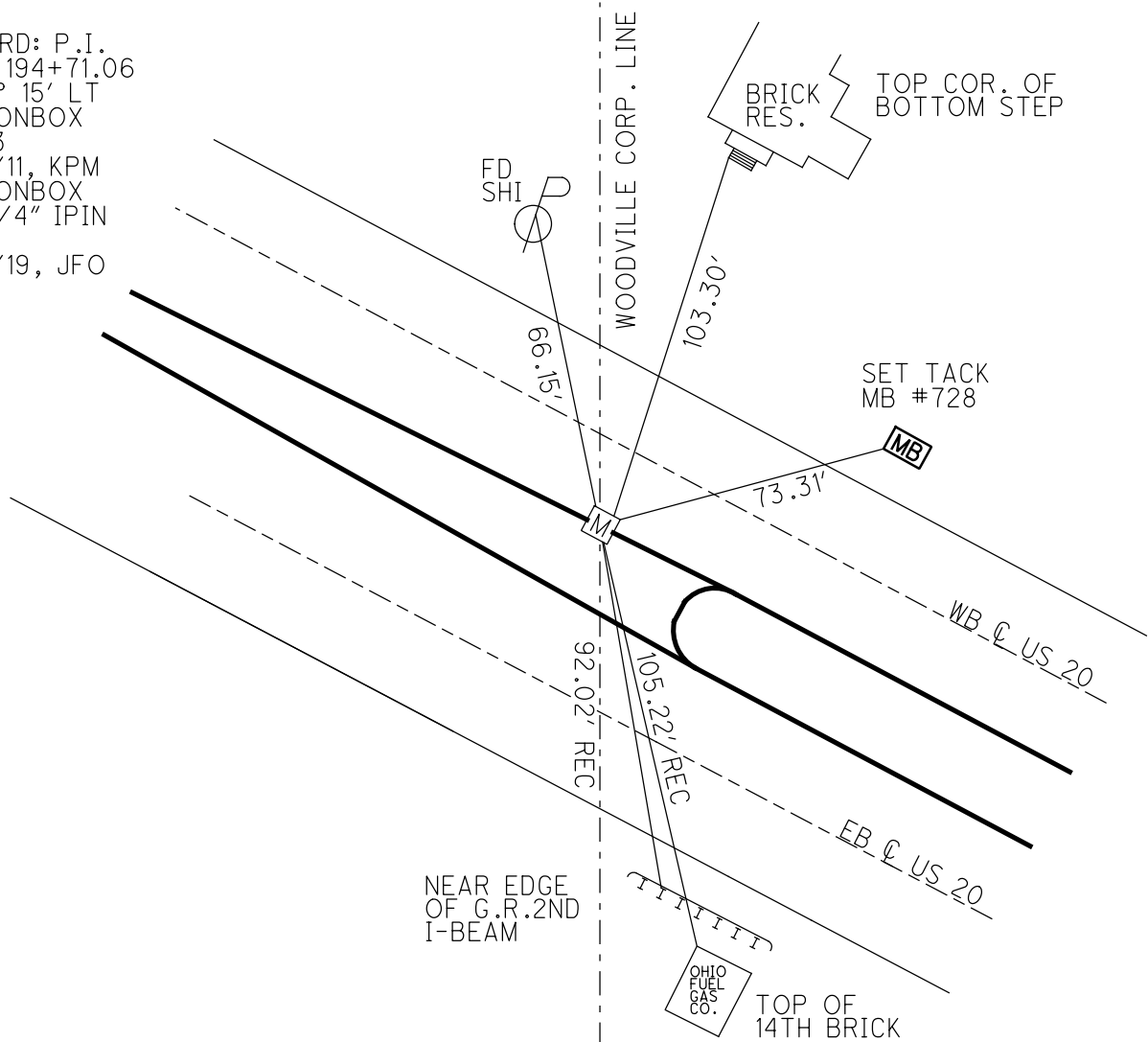
STATION: 194+79

HORZ.DATUM: NAD83 (2011) GEOID: 2012A

GRID: NORTHING: 649474.559 EASTING: 1734753.360



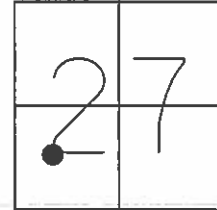
RECORD: P.I.
 STA. 194+71.06
 $\Delta = 0^\circ 15' \text{ LT}$
 FD MONBOX
 REF 3
 6/16/11, KPM
 FD MONBOX
 W/ 3/4" IPIN
 REF 3
 6/18/19, JFO



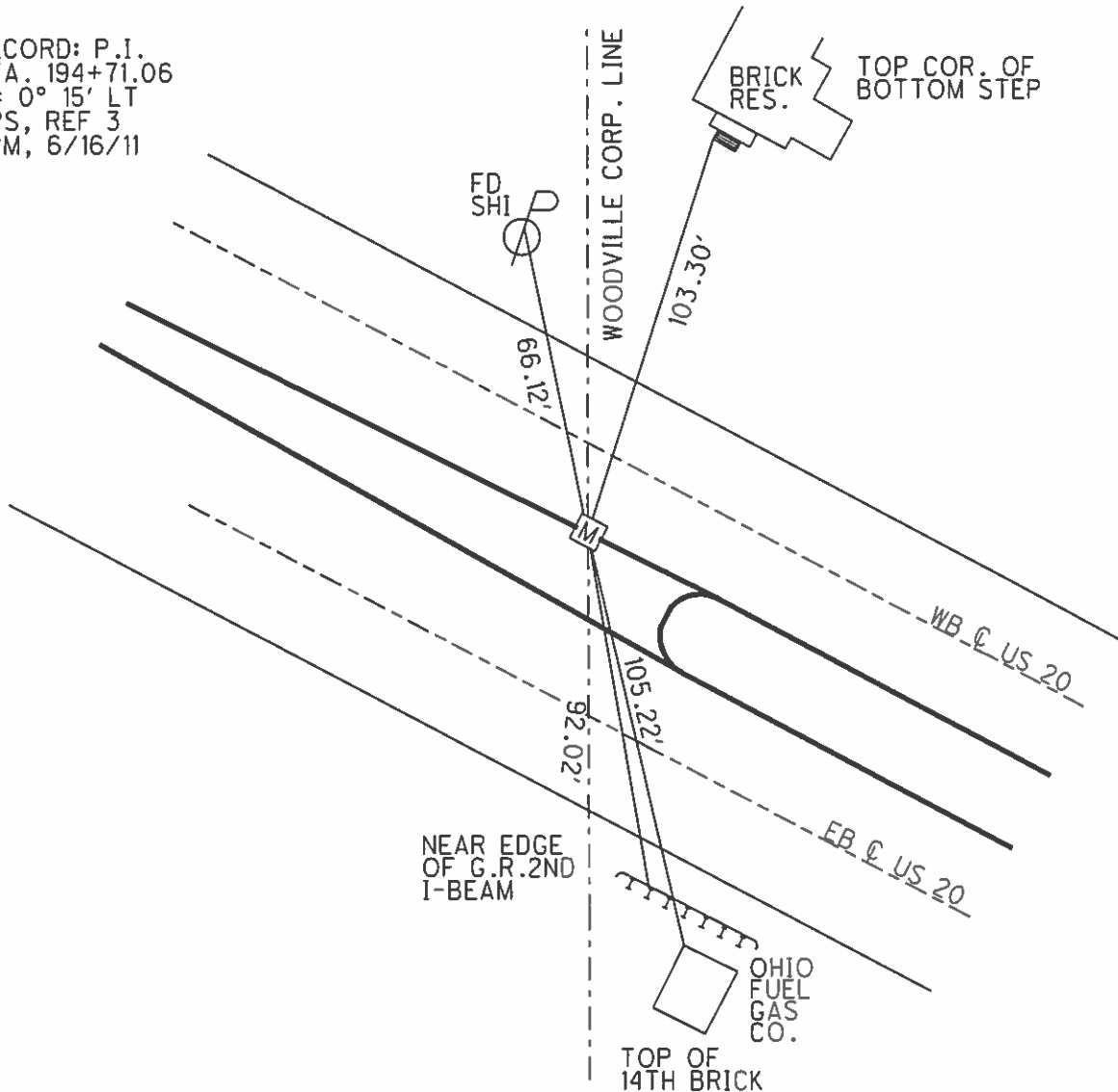
O.D.O.T. DISTRICT 2 SURVEY OFFICE (USE ONLY)

PERSONNEL _____ REFERENCE NO. 3 SHEET 3 OF 33
 NOTES HARBAUGH DATE 6/16/11 ROUTE US 20
 H.C. MOSER WEATHER PTLY CLDY COUNTY SANDUSKY
 R.C. FINGER TEMP. 70° TOWNSHIP WOODVILLE
 _____ SECTION 27
 _____ T 6 N R 13 E

TYPE MONUMENT MON BOX
 ON SURFACE - ~~BELOW~~ ON _____
 LEFT - C PAV'T - ~~RIGHT~~ ON W.B.LT.E.P.
22.7' TO LT EDGE PAVEMENT
 S.L.M. 194+79
 GRID: NORTHING: 649474.595 EASTING: 1734753.166



RECORD: P.I.
 STA. 194+71.06
 $\Delta = 0^{\circ} 15' LT$
 GPS, REF 3
 KPM, 6/16/11



O.D.O.T. DISTRICT 2 SURVEY OFFICE

PERSONNEL

REFERENCE NO. 3

SHEET 3 OF 33

NOTES HARBAUGH

DATE 6/16/11

ROUTE US 20

H.C. MOSER

WEATHER PTLY CLDY

COUNTY SANDUSKY

R.C. FINGER

TEMP. 70°

TOWNSHIP WOODVILLE

SECTION 27

T 6 N R 13 E

TYPE MONUMENT MON. BOX

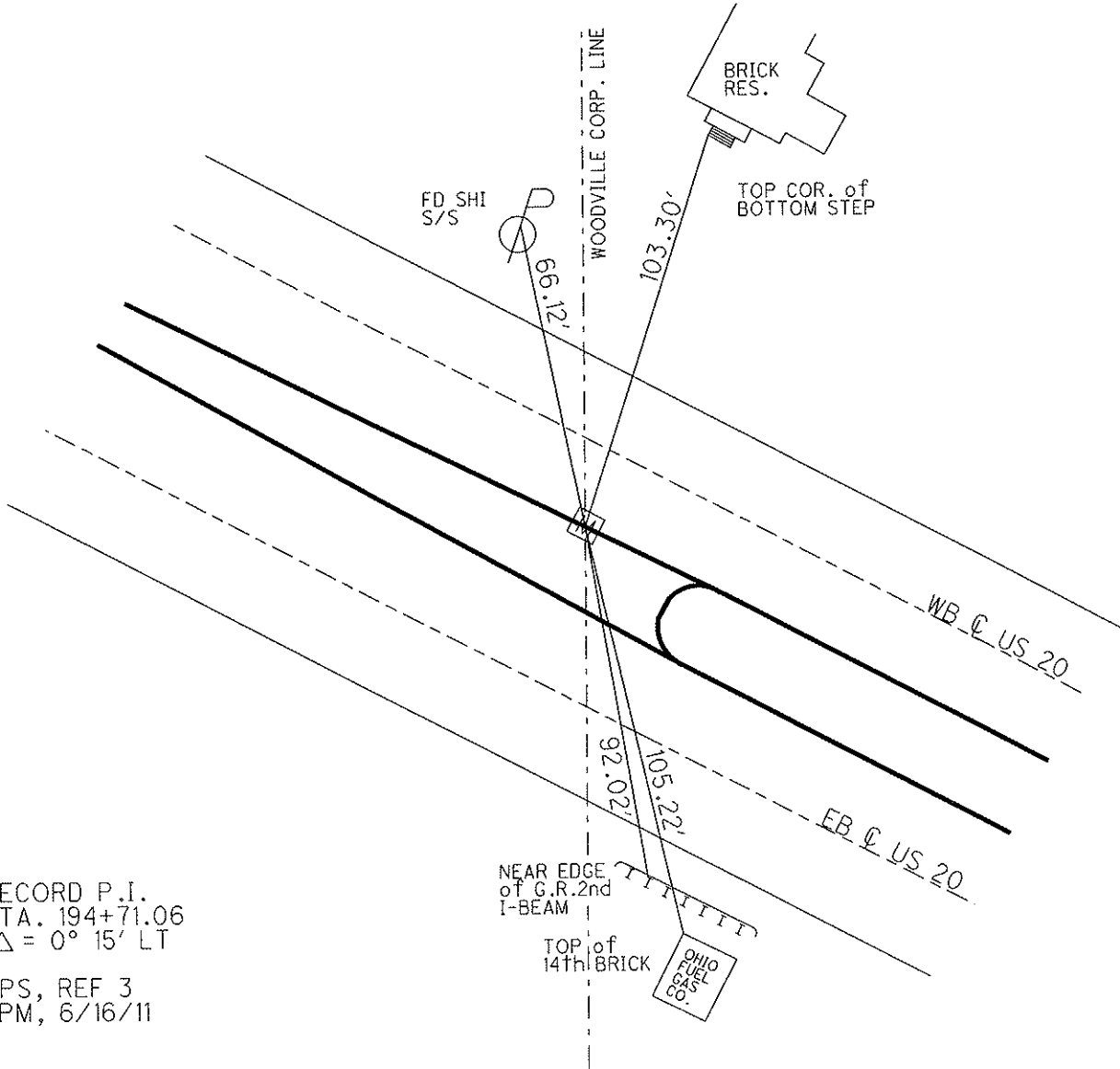
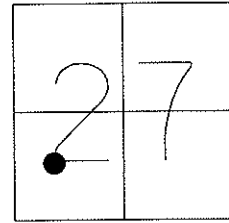
ON SURFACE - ~~BELOW~~ ON

LEFT - C PAV'T - ~~RIGHT~~ ON W.B.LT.E.P.

22.7' TO LT EDGE PAVEMENT

S.L.M. 194+79

Grid: Northing: 649474.595 Easting: 1734753.166



RECORD P.I.
STA. 194+71.06
 $\Delta = 0^\circ 15' LT$

GPS, REF 3
KPM, 6/16/11

PERSONNEL	TITLE	PERSONNEL	TITLE	COUNTY	DATE	WEATHER	TEMP.
Schneider		Vinson		Sandusky	7-21-71	Fair	80°
Mosser				S. R. U.S. # 20			
Barbour				SEC. 3.10 - 3.70			
Geyman							
DESCRIPTION Sec 28 Woodville Twp.							
LEFT		CENTER LINE		RIGHT		JOB NO.	

