

O.D.O.T. DISTRICT 2 SURVEY OFFICE (USE ONLY)

PERSONNEL

REFERENCE NO. 12 E

SHEET 8 OF 32

NOTES AUBLE

DATE 11/20/23

ROUTE US 20

H.C. AUBLE

WEATHER CLOUDY

COUNTY SANDUSKY

R.C. MILLER

TEMP. 46°

TOWNSHIP WOODVILLE

SECTION 35

DWG BY RHOADES

PID 110021

T 6 N R 13 E

TYPE MONUMENT D.N.F. - R.R.SPIKE

ON SURFACE - BELOW -

OFFSET ☐ PAVEMENT - LT : RT

3.9'± N TO S EDGE PAVEMENT

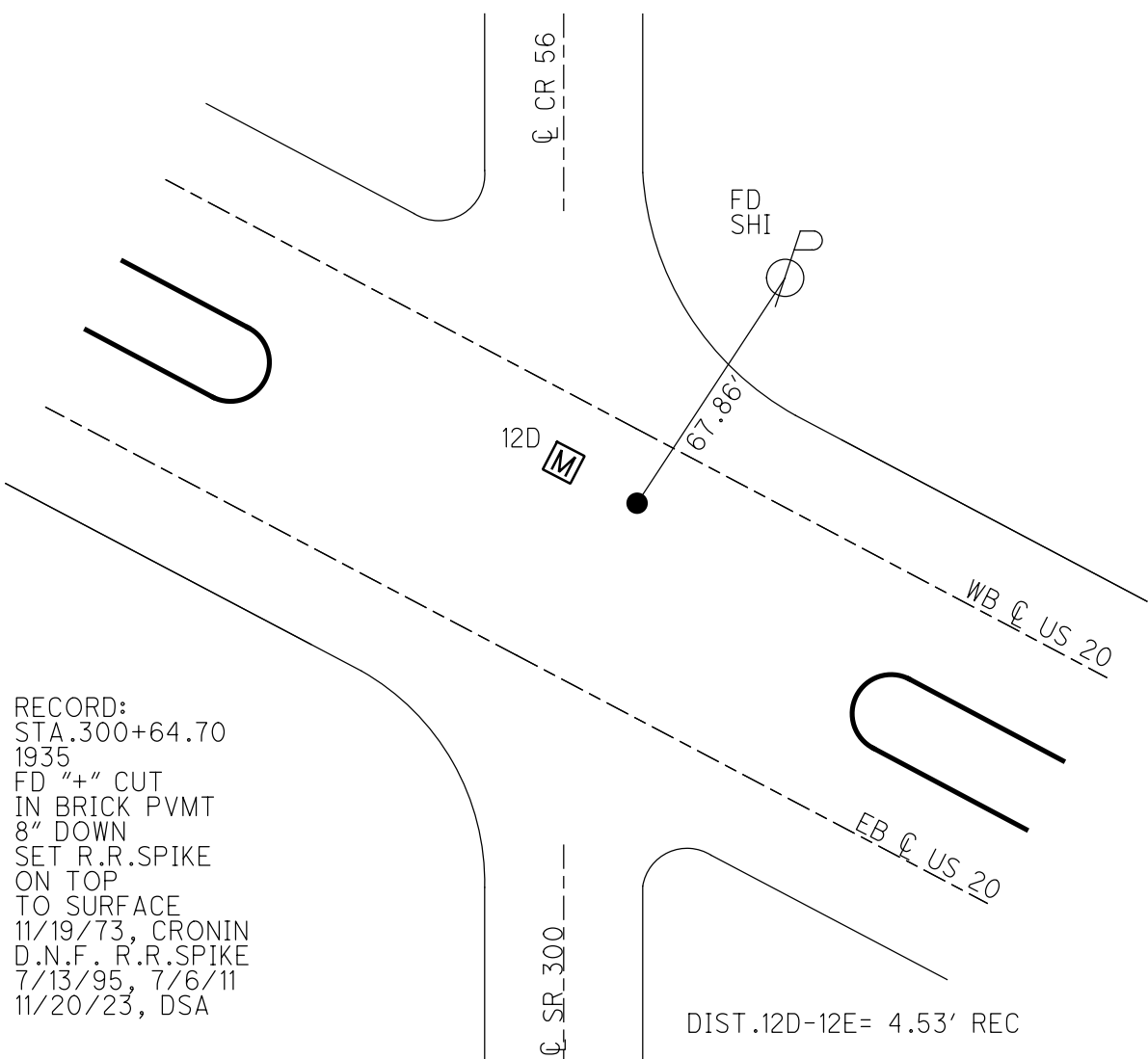
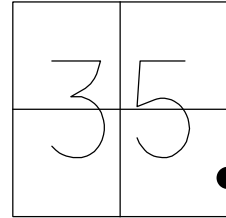
STATION: 300+54.81

HORIZ.DATUM: NAD83 2011

GEOID: NAVD88 2018

GRID: NORTHING: -

EASTING: -



RECORD:
 STA. 300+64.70
 1935
 FD "+" CUT
 IN BRICK PVMT
 8" DOWN
 SET R.R.SPIKE
 ON TOP
 TO SURFACE
 11/19/73, CRONIN
 D.N.F. R.R.SPIKE
 7/13/95, 7/6/11
 11/20/23, DSA

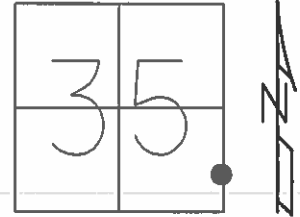
DIST. 12D-12E = 4.53' REC

O.D.O.T. DISTRICT 2 SURVEY OFFICE (USE ONLY)

PERSONNEL _____ REFERENCE NO. 7 A SHEET 8 OF 33

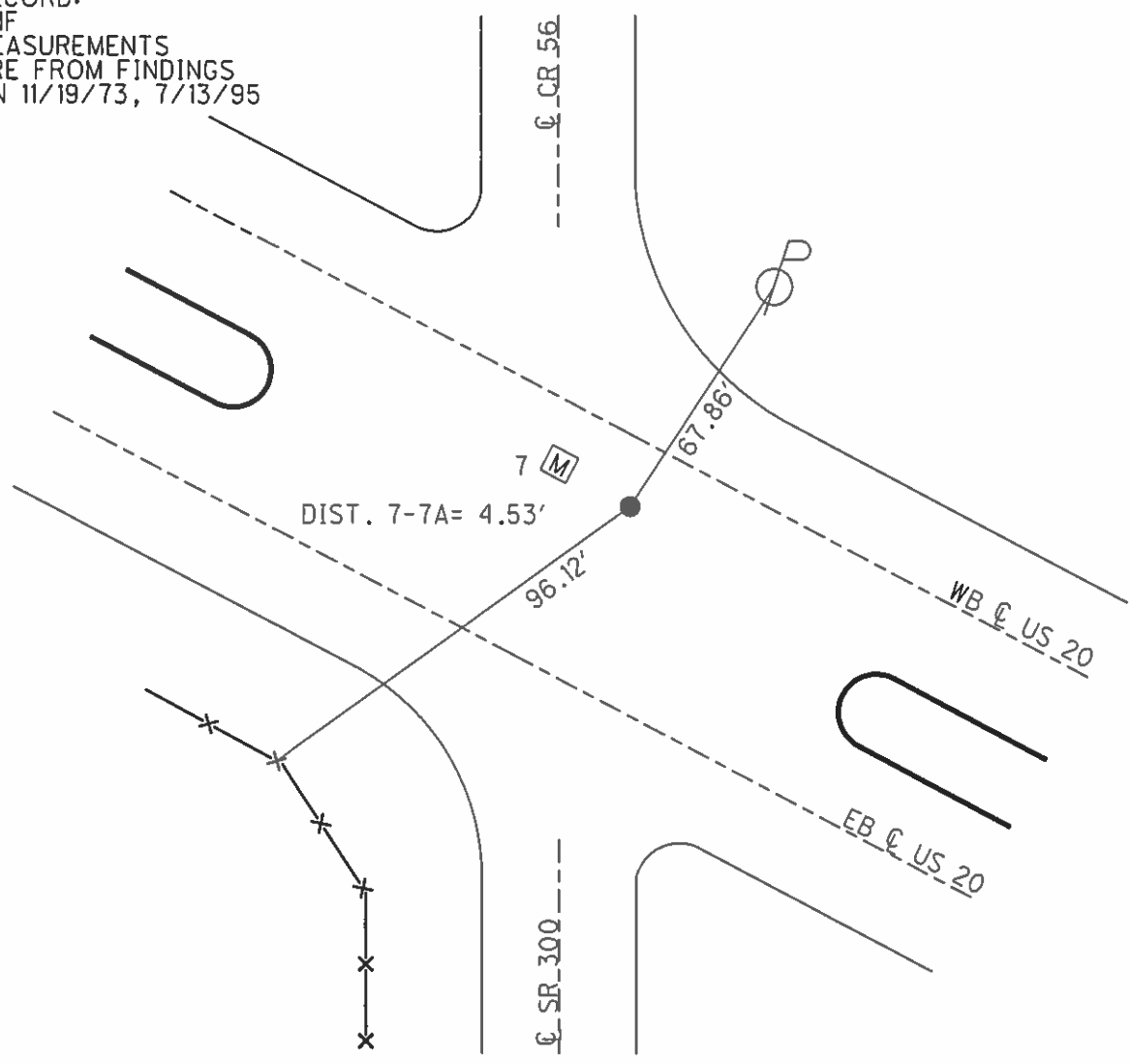
NOTES HARBAUGH DATE 7/6/11 ROUTE US 20
 H.C. MOSER WEATHER CLOUDY COUNTY SANDUSKY
 R.C. FINGER TEMP. 89° TOWNSHIP WOODVILLE
 _____ SECTION 35
 _____ T 6 N R 13 E

TYPE MONUMENT RR SPIKE (DNF)
 ON SURFACE - BELOW ON
 LEFT - ☉ PAV'T - RIGHT -
- TO - EDGE PAVEMENT
 S.L.M. -



GRID: NORTHING: _____ EASTING: _____

RECORD:
 DNF
 MEASUREMENTS
 ARE FROM FINDINGS
 ON 11/19/73, 7/13/95



O.D.O.T. DISTRICT 2 SURVEY OFFICE

PERSONNEL

NOTES HARBAUGH
H.C. MOSER
R.C. FINGER

REFERENCE NO. 7 A

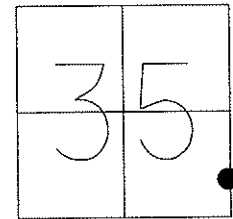
DATE 7/6/11
WEATHER CLOUDY
TEMP. 89°

SHEET 8 OF 33

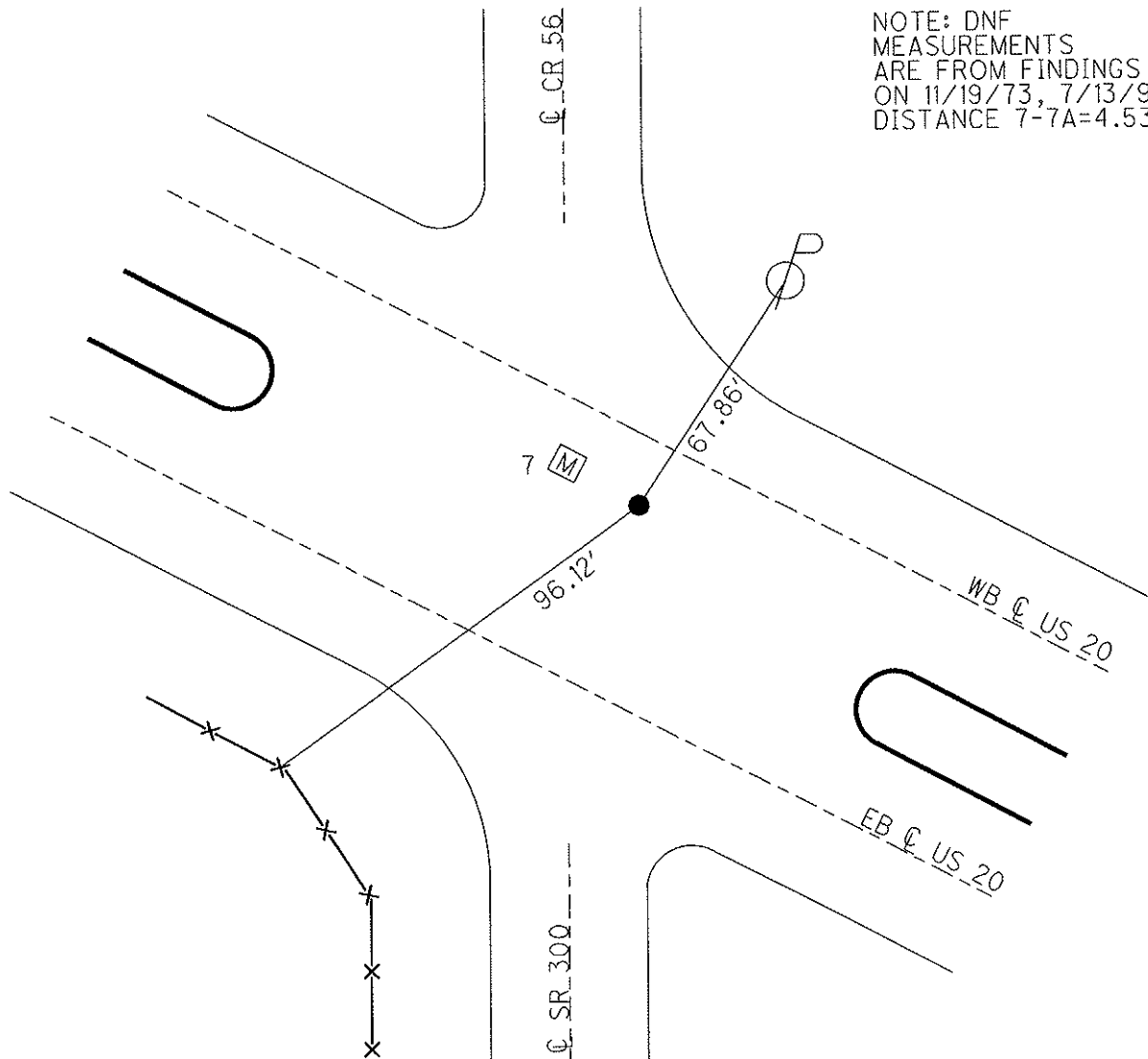
ROUTE US 20
COUNTY SANDUSKY
TOWNSHIP WOODVILLE
SECTION 35
T 6 N R 13 E

TYPE MONUMENT R.R. SPIKE (DNF)
ON SURFACE - BELOW ON
LEFT - Q PAV'T - RIGHT _____
_____ TO _____ EDGE PAVEMENT
S.L.M. _____

Grid: Northing: _____ Easting: _____



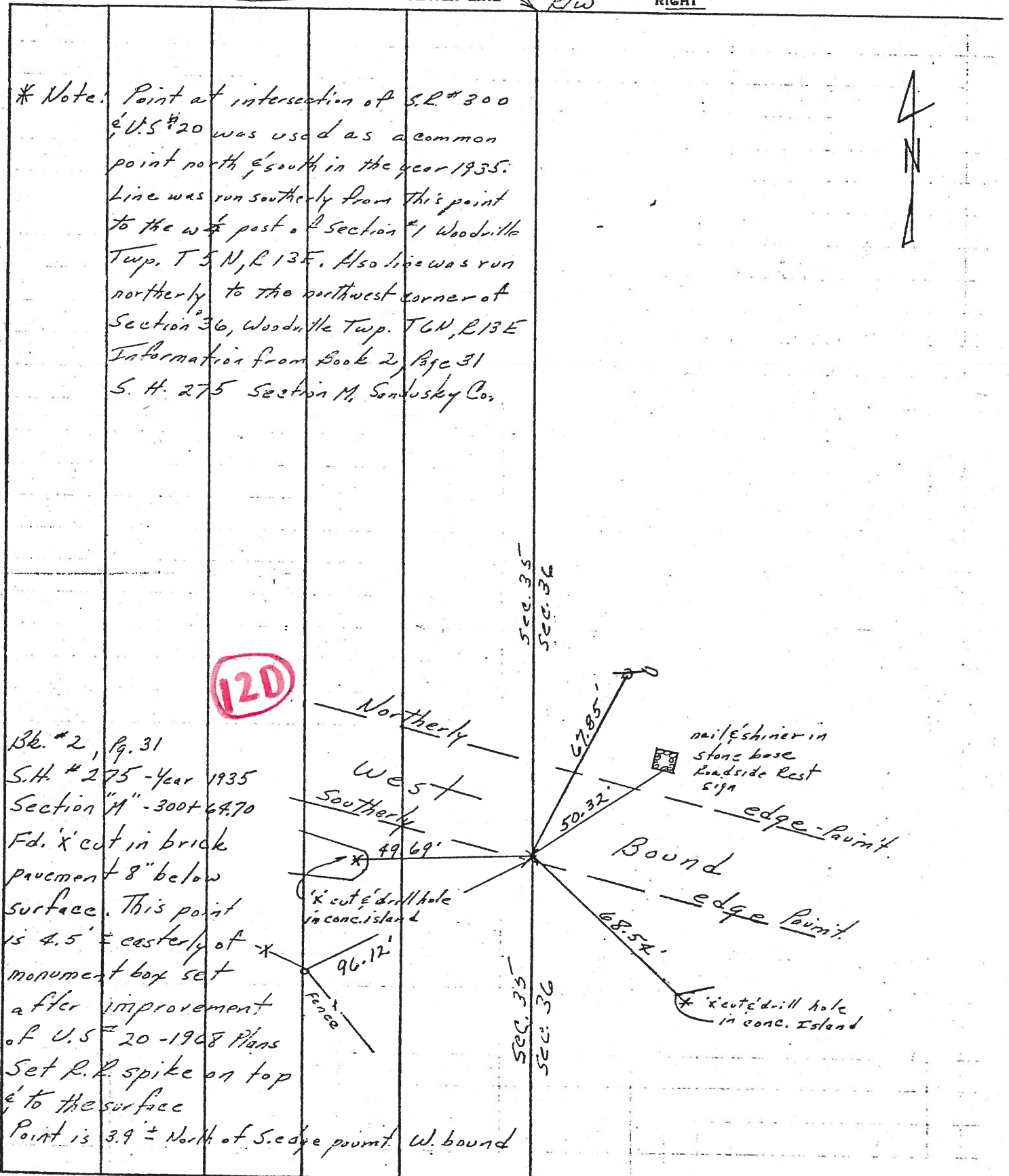
NOTE: DNF
MEASUREMENTS
ARE FROM FINDINGS
ON 11/19/73, 7/13/95
DISTANCE 7-7A=4.53'



| PERSONNEL | TITLE | PERSONNEL | TITLE |
|---------------|-------|-----------|-------|
| <u>Cranin</u> | | | |
| <u>Ash</u> | | | |
| <u>Ripple</u> | | | |

COUNTY Sandusky DATE Drawn 11/19/75
 S. R. # 300 WEATHER _____
 SEC. U.S. # 6 to U.S. # 20 TEMP. _____

DESCRIPTION Ties for Control Points JOB NO. _____



* Note: Point at intersection of S.R. # 300 & U.S. # 20 was used as a common point north & south in the year 1935. Line was run southerly from this point to the west post of Section # 1 Woodville Twp. T 5 N, R 13 E. Also line was run northerly to the northwest corner of Section 36, Woodville Twp. T 6 N, R 13 E Information from Book 2, Page 31 S. H. 275 Section M, Sandusky Co.

Bk. # 2, Pg. 31
 S.H. # 275 - Year 1935
 Section "A" - 300 + 64.70
 Fd. 'x' cut in brick pavement 8" below surface. This point is 4.5' ± easterly of monument box set after improvement of U.S. # 20 - 1908 Plans Set R.R. spike on top & to the surface Point is 3.9' ± North of S. edge point. W. bound

PERSONNEL TITLE PERSONNEL TITLE

COUNTY Sandusky DATE 7-21-71

S. R. U.S. # 20 WEATHER Fair

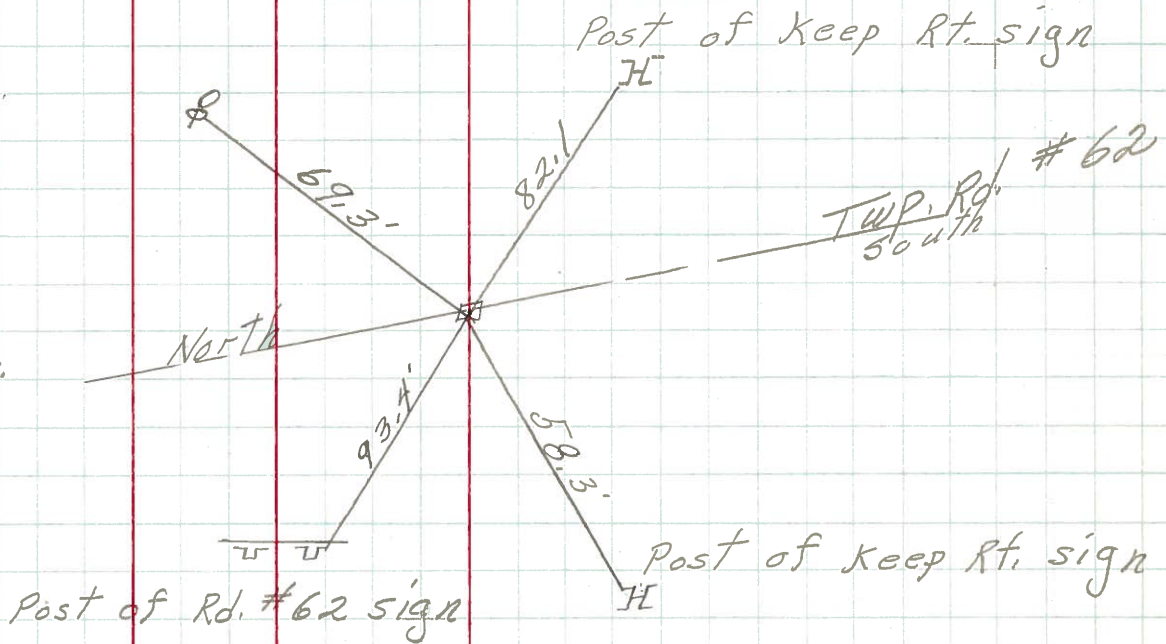
SEC. 3.11-3.70 TEMP. 80°

DESCRIPTION Sec- 36 Woodville Twp. JOB NO.

LEFT CENTER LINE RIGHT

12F

P.I.
330+14.74
center Mon.
Box # 8



12D

P.I.
300+50.28
center Mon.
Box # 7

