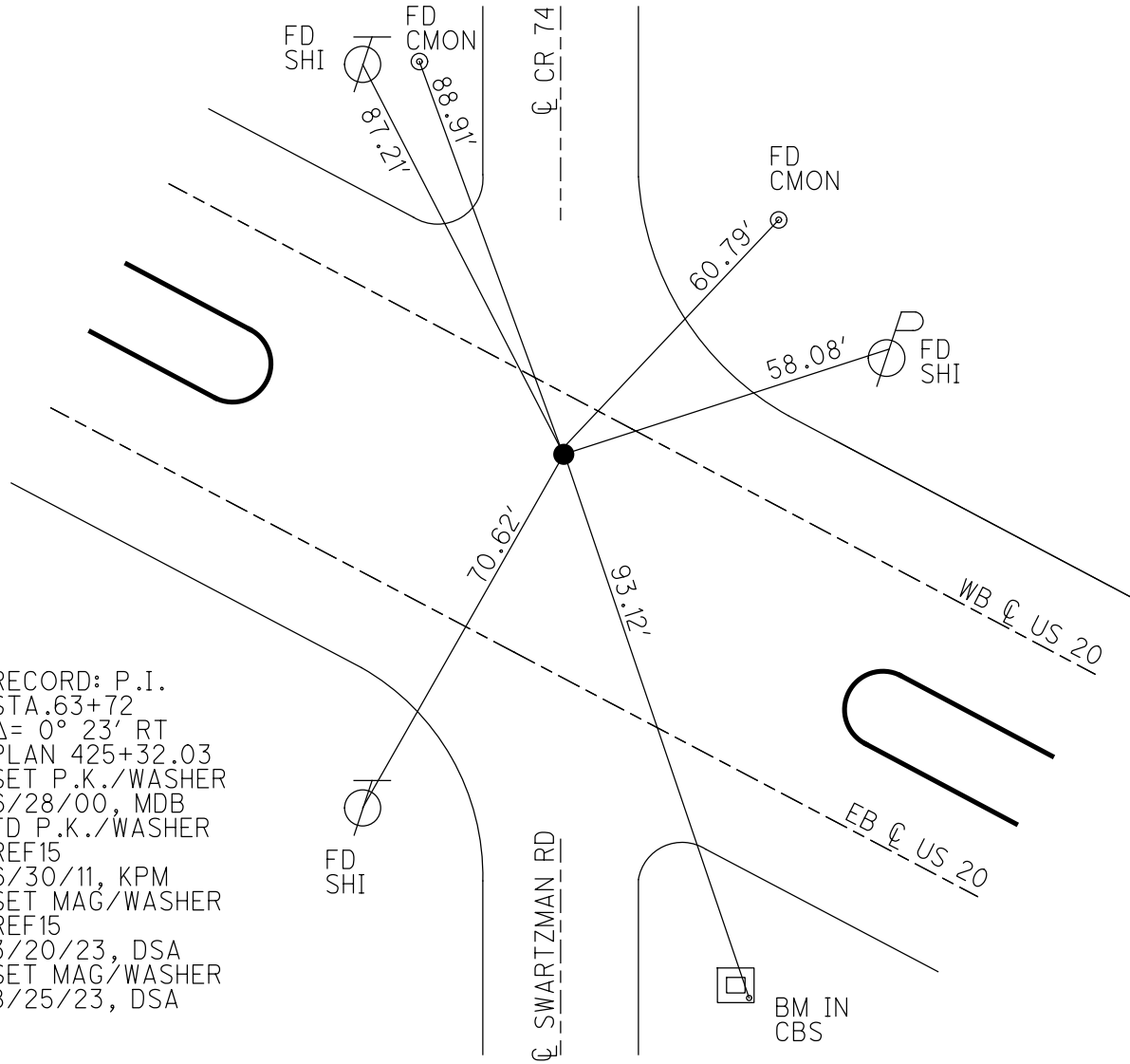
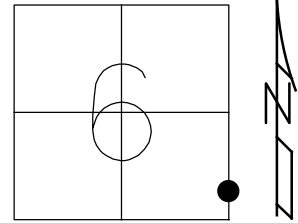


O.D.O.T. DISTRICT 2 SURVEY OFFICE (USE ONLY)

PERSONNEL _____ REFERENCE NO. 15 SHEET 15 OF 32
 NOTES AUBLE DATE 8/25/23 ROUTE US 20
 H.C. AUBLE WEATHER CLOUDY COUNTY SANDUSKY
 R.C. NIESE TEMP. 72° TOWNSHIP WASHINGTON
 SECTION 6
 DWG BY RHOADES PID 110021 T 6 N R 14 E

TYPE MONUMENT MAG/WASHER
 ON SURFACE - ~~BELOW~~ ON
 OFFSET CL PAVEMENT 7.3' LT : ~~RT~~
4.4' TO S EDGE PAVEMENT
 STATION: 424+88

HORZ. DATUM: NAD83 2011 GEOID: NAVD88 2018
 GRID: NORTHING: 638438.761 EASTING: 1754878.575

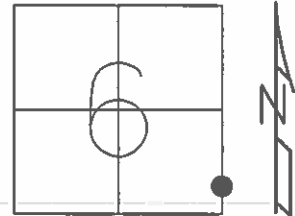


RECORD: P.I.
 STA. 63+72
 $\Delta = 0^\circ 23' RT$
 PLAN 425+32.03
 SET P.K./WASHER
 6/28/00, MDB
 FD P.K./WASHER
 REF15
 6/30/11, KPM
 SET MAG/WASHER
 REF15
 3/20/23, DSA
 SET MAG/WASHER
 8/25/23, DSA

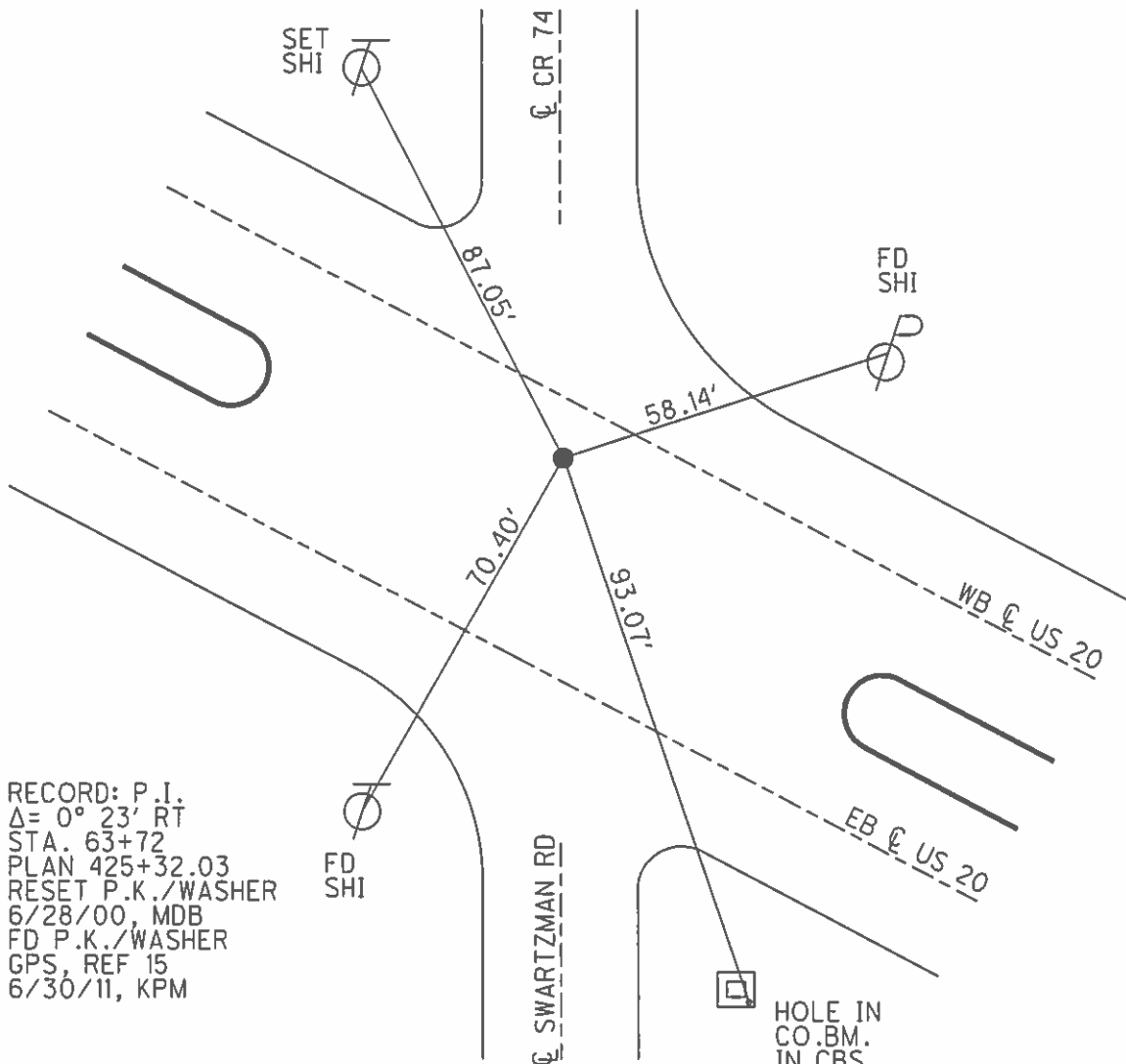
O.D.O.T. DISTRICT 2 SURVEY OFFICE (USE ONLY)

PERSONNEL	REFERENCE NO.	15	SHEET	15	OF	33
NOTES	HARBAUGH	DATE	7/6/11	ROUTE	US 20	
H.C.	MOSER	WEATHER	CLOUDY	COUNTY	SANDUSKY	
R.C.	FINGER	TEMP.	89°	TOWNSHIP	WASHINGTON	
				SECTION	6	
				T	5	N
				R	14	E

TYPE MONUMENT P.K./WASHER
 ON SURFACE - ~~BELOW~~ ON _____
 LEFT - Q PAV'T - ~~RIGHT~~ 7.3' (WB LANE)
4.4' TO S EDGE PAVEMENT
 S.L.M. 424+88



GRID: NORTHING: 638438.748 EASTING: 1754878.183



RECORD: P.I.
 $\Delta = 0^\circ 23' RT$
 STA. 63+72
 PLAN 425+32.03
 RESET P.K./WASHER
 6/28/00, MDB
 FD P.K./WASHER
 GPS, REF 15
 6/30/11, KPM

O.D.O.T. DISTRICT 2 SURVEY OFFICE

PERSONNEL

REFERENCE NO. 15

SHEET 15 OF 33

NOTES HARBAUGH

DATE 7/6/11

ROUTE US 20

H.C. MOSER

WEATHER CLOUDY

COUNTY SANDUSKY

R.C. FINGER

TEMP. 89°

TOWNSHIP WASHINGTON

SECTION 6

T 5 N R 14 E

TYPE MONUMENT P.K./WASHER

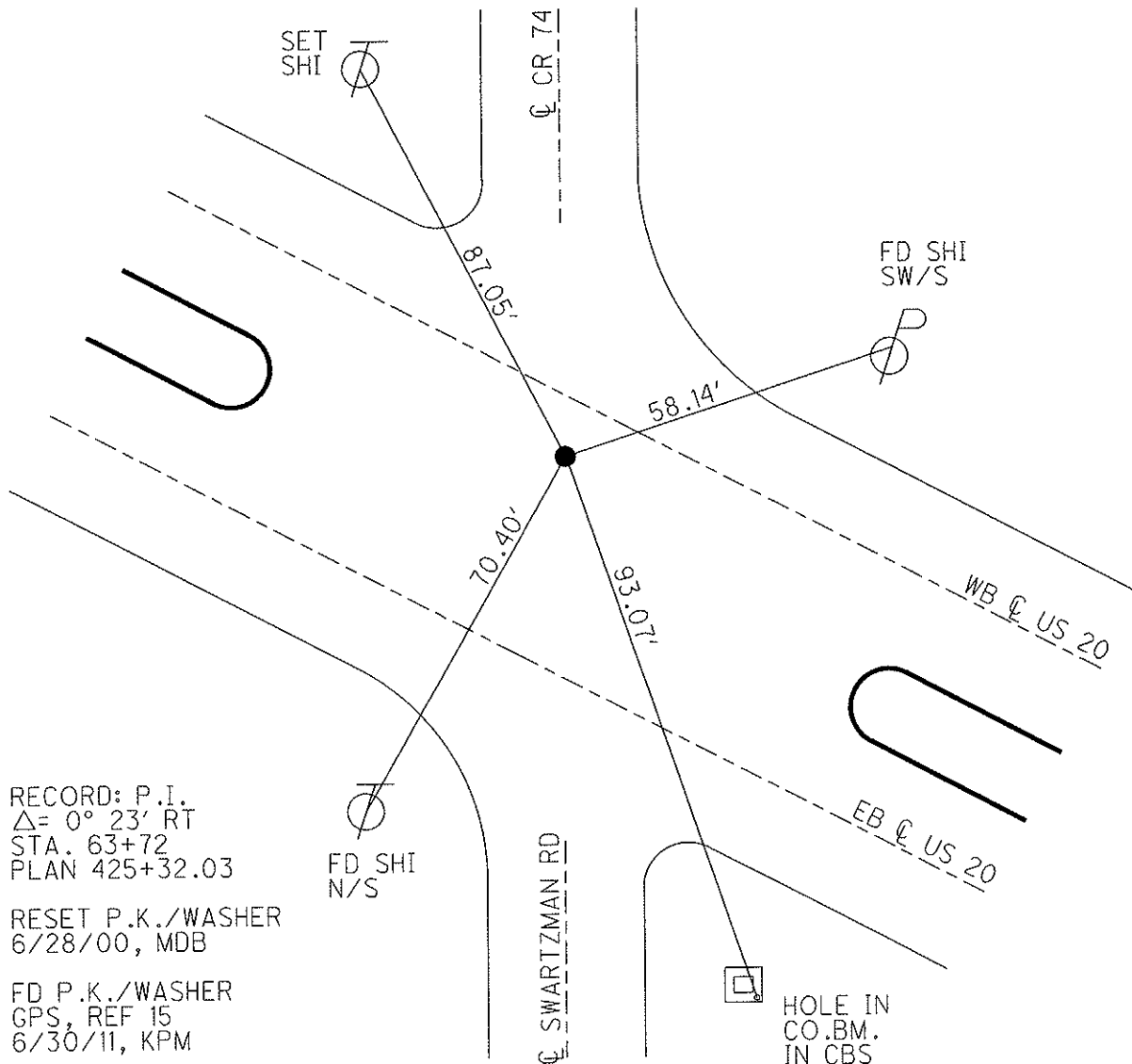
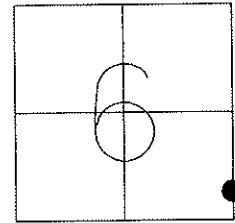
ON SURFACE - ~~BELOW~~ ON

LEFT - Q PAV'T - ~~RIGHT~~ 7.3' (WB LANE)

4.4' TO S EDGE PAVEMENT

S.L.M. 424+88

Grid: Northing: 638438.748 Easting: 1754878.183



RECORD: P.I.
 $\Delta = 0^\circ 23' RT$
 STA. 63+72
 PLAN 425+32.03

RESET P.K./WASHER
 6/28/00, MDB

FD P.K./WASHER
 GPS, REF 15
 6/30/11, KPM

County Sandusky S.R. US #20

Date 7 April 83

Township Washington

Weather Cloudy

Section 6

Temp. 45°

T N, R E

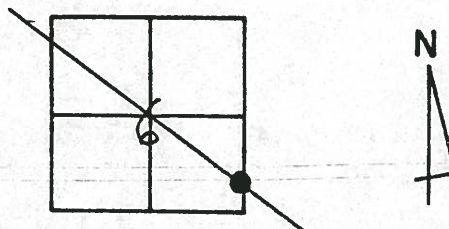
Personnel I. Stone

R. Michalak

D. Curtis

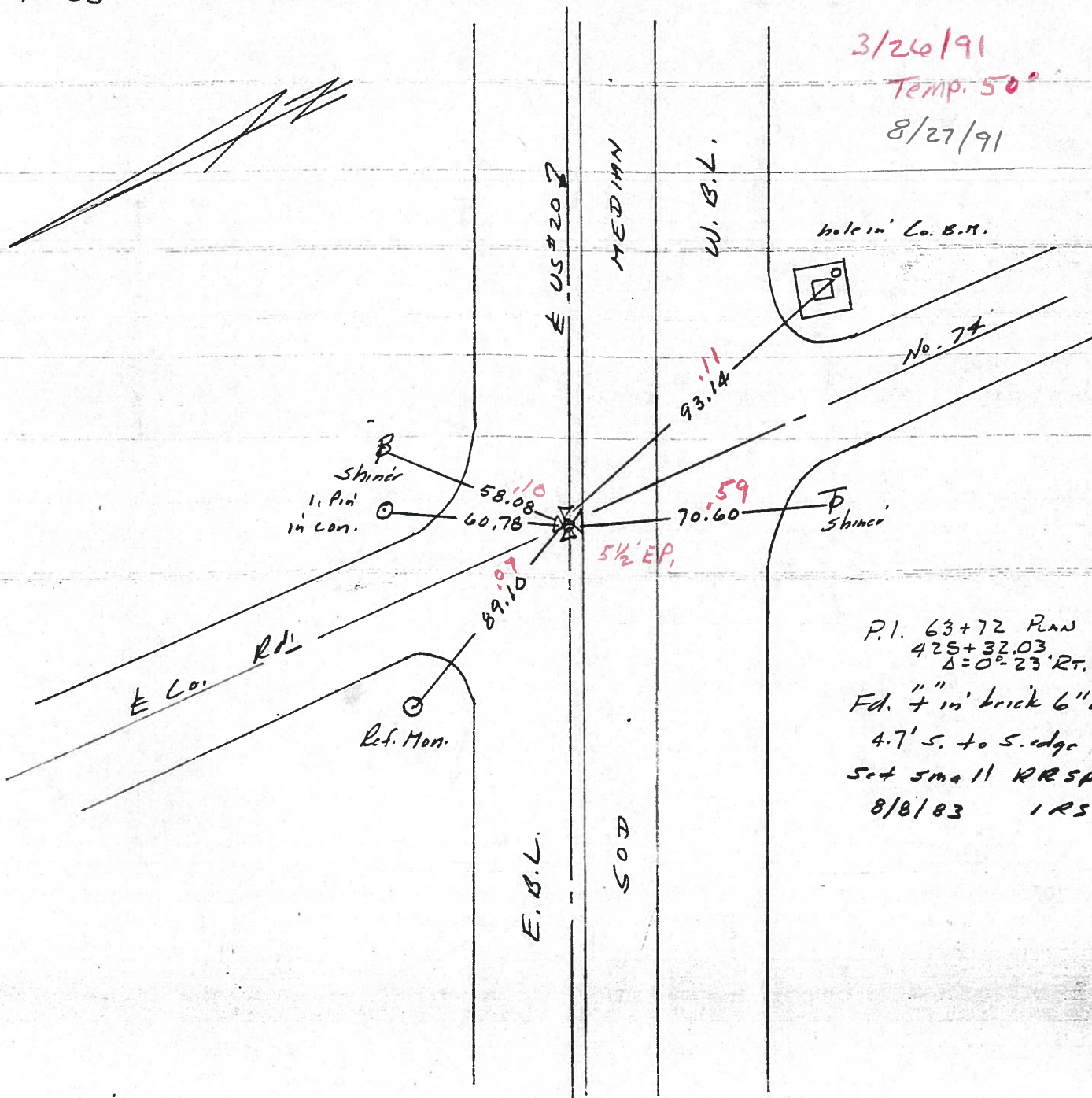
P. Neuse

15



424+88

REF. No. 15



3/26/91

Temp. 50°

8/27/91

hole in Co. B.M.

No. 74

Shiner
1. Pin
in con.

Shiner

E Co. Rd.

Ref. Mon.

E. B.L.

SOD

P.I. 63+72 PLAN
425+32.03
Δ=0° 23' RT.
Fd. 7" in brick 6" drop
4.7' S. to S. edge W. B.L.
Set small RR spk
8/8/83 IRS

Q.D.O.T. DISTRICT 2 SURVEY OFFICE

SHEET 4 OF

County Sandusky S.R. US #20

Date 7 April 83

Township Washington

Weather Cloudy

Section 6

Temp. 45°

T N, R E

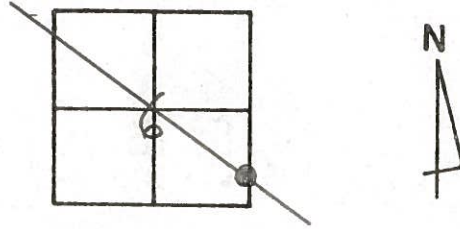
Personnel I. Stone

R. Michalak

D. Curtis

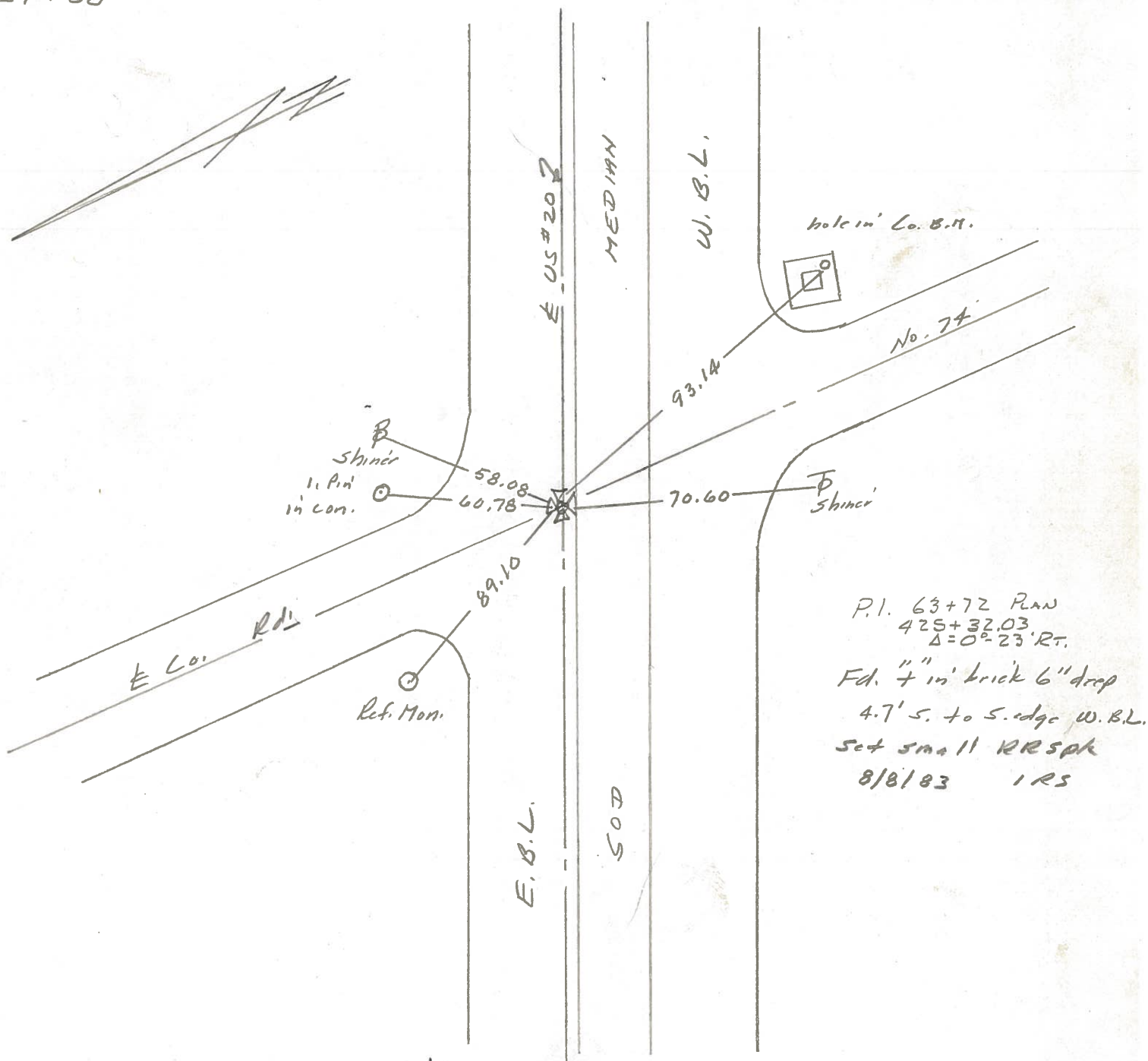
P. Neuse

15



424+88

REF. No. 15



PERSONNEL TITLE PERSONNEL TITLE

Schneider
Mosser
Barbour
Geyman

COUNTY Sandusky DATE 7-18-73

S. R. U.S. #20 WEATHER Hot

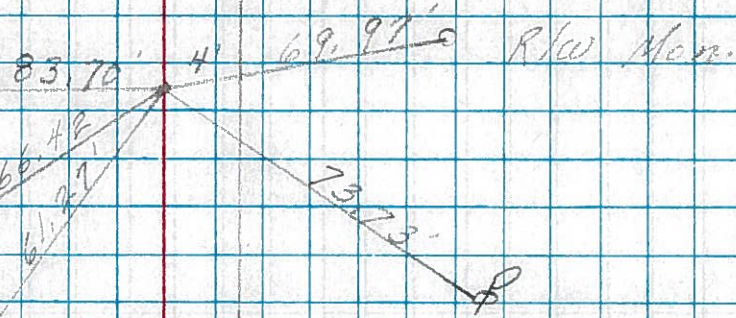
SEC. 5 TEMP. 90°

DESCRIPTION Washington Twp. LEFT CENTER/LINE RIGHT JOB NO.

17

P.O.T.
100+00.6 Plan
P.K. Nail

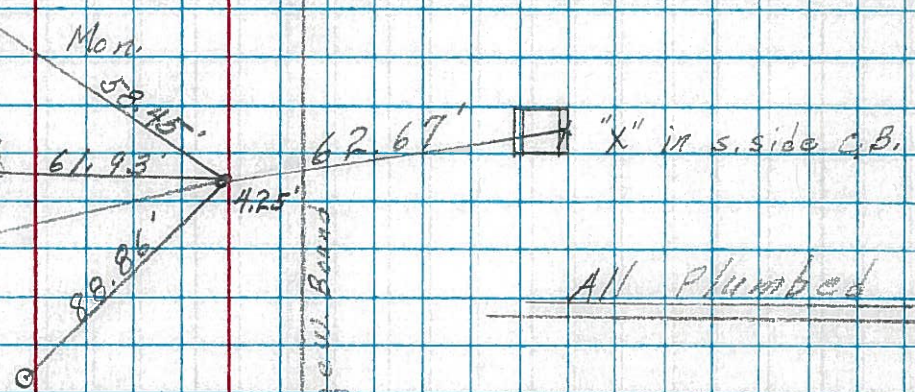
20" Maple
14" Maple



16

P.O.T.
440+05.25
Fd. "4" in Brick
6" down

"4" in stone
Co. Rd. # 111



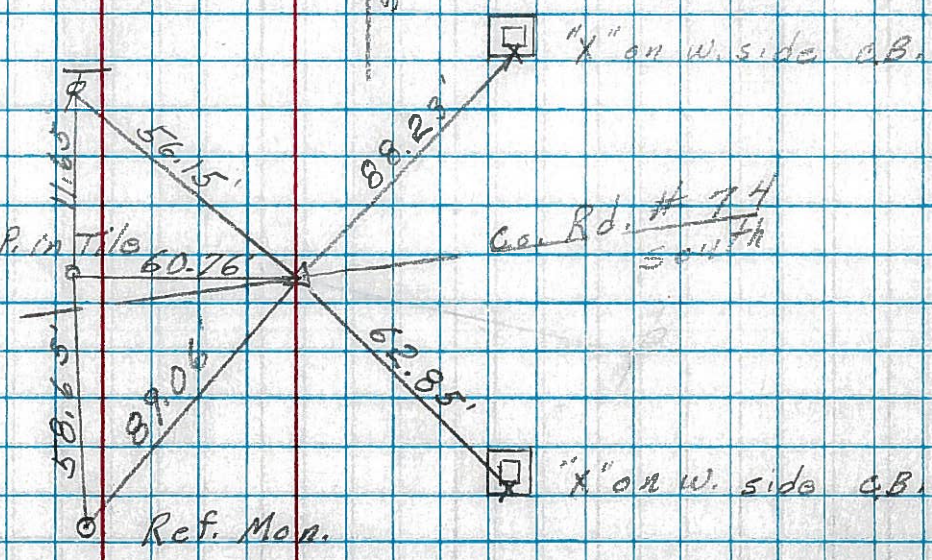
AN Plumbed

15

P.I. 63+72 Plan
425+32.03
A = 0° 23' RT
Fd. "4" in brick
6" down

1 P. in Tile
Ref. Mon.

Co. Rd. # 74
South



PERSONNEL	TITLE	PERSONNEL	TITLE	COUNTY	DATE
Schneider				Sandusky	Dec-1967
Mosser				S. R. U.S. # 20	WEATHER
Barbour				SEC. SR# 199 - East	TEMP.
Potts					

DESCRIPTION Ties for Control Points JOB NO. _____

