

O.D.O.T. DISTRICT 2 SURVEY OFFICE (USE ONLY)

PERSONNEL

REFERENCE NO. 17 A

SHEET 18 OF 32

NOTES AUBLE

DATE 8/25/23

ROUTE US 20

H.C. AUBLE

WEATHER CLOUDY

COUNTY SANDUSKY

R.C. NIESE

TEMP. 72°

TOWNSHIP WASHINGTON

SECTION 8

DWG BY RHOADES

PID 110021

T 6 N R 14 E

TYPE MONUMENT MAG/WASHER

ON SURFACE - ~~BELOW~~ ON

OFFSET  $\varnothing$  PAVEMENT 8.1' LT : ~~RT~~

4.1' TO S EDGE PAVEMENT

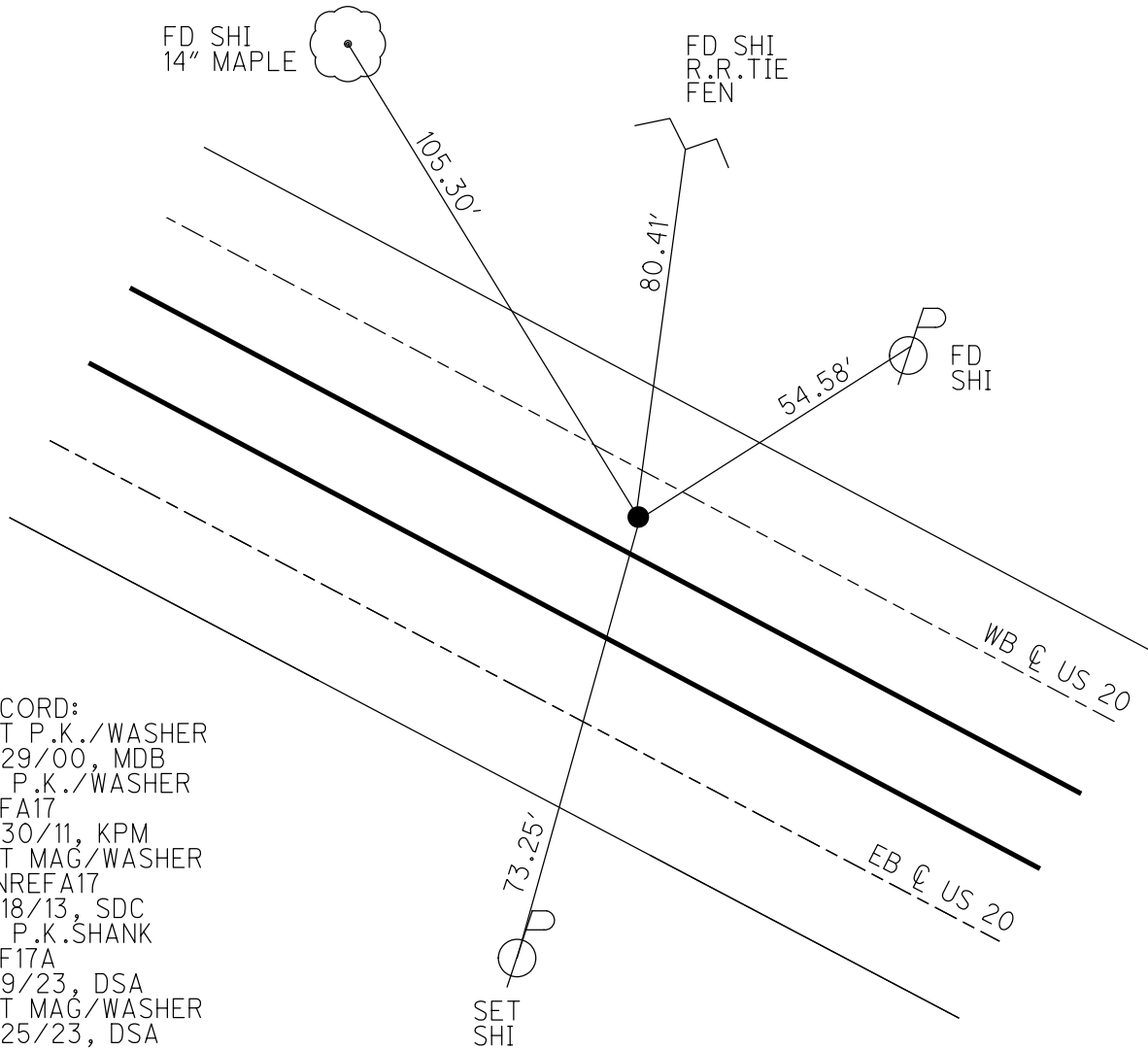
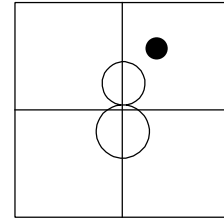
STATION: 478+00

HORZ.DATUM: NAD83 2011

GEOID: NAVD88 2018

GRID: NORTHING: 635874.521

EASTING: 1759478.633

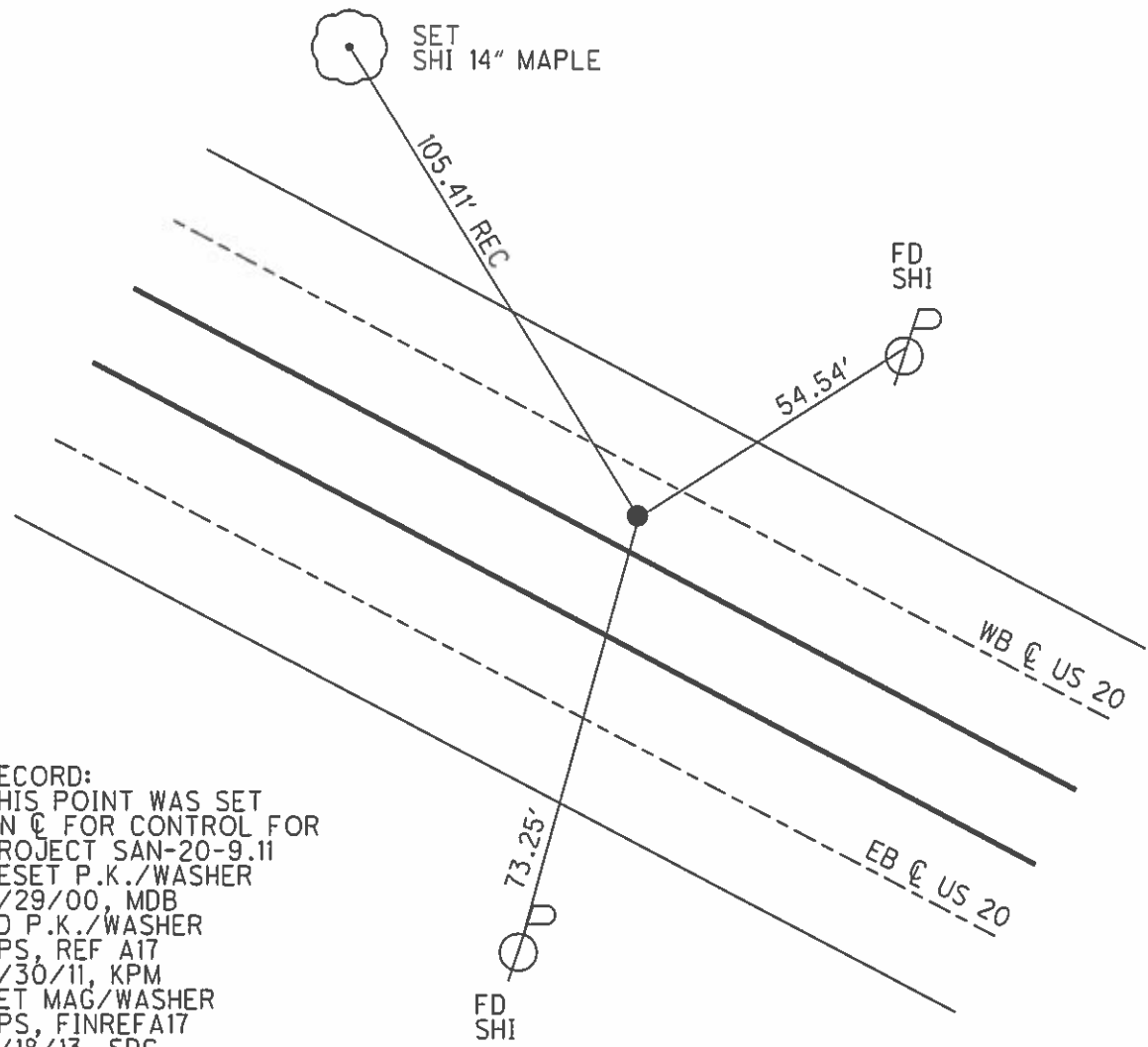
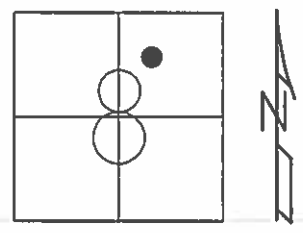


RECORD:  
 SET P.K./WASHER  
 6/29/00, MDB  
 FD P.K./WASHER  
 REFA17  
 6/30/11, KPM  
 SET MAG/WASHER  
 FINREFA17  
 9/18/13, SDC  
 FD P.K.SHANK  
 REF17A  
 3/9/23, DSA  
 SET MAG/WASHER  
 8/25/23, DSA

**O.D.O.T. DISTRICT 2 SURVEY OFFICE (USE ONLY)**

|           |                  |               |                |              |                   |    |           |
|-----------|------------------|---------------|----------------|--------------|-------------------|----|-----------|
| PERSONNEL |                  | REFERENCE NO. | <u>17 A</u>    | SHEET        | <u>18</u>         | OF | <u>33</u> |
| NOTES     | <u>HARBAUGH</u>  | DATE          | <u>7/11/11</u> | ROUTE        | <u>US 20</u>      |    |           |
| H.C.      | <u>MOSER</u>     | WEATHER       | <u>CLOUDY</u>  | COUNTY       | <u>SANDUSKY</u>   |    |           |
| R.C.      | <u>LUMBREZER</u> | TEMP.         | <u>98°</u>     | TOWNSHIP     | <u>WASHINGTON</u> |    |           |
|           |                  |               |                | SECTION      | <u>8</u>          |    |           |
|           |                  |               |                | <u>T 5 N</u> | <u>R 14 E</u>     |    |           |

TYPE MONUMENT P.K./WASHER  
 ON SURFACE - ~~BELOW~~ ON  
 LEFT - ☉ PAV'T - RIGHT                       
4.4' TO S EDGE PAVEMENT (WB LANE)  
 S.L.M. 478+00  
 GRID: NORTHING: 635874.569 EASTING: 1759478.547



RECORD:  
 THIS POINT WAS SET  
 ON ☉ FOR CONTROL FOR  
 PROJECT SAN-20-9.11  
 RESET P.K./WASHER  
 6/29/00, MDB  
 FD P.K./WASHER  
 GPS, REF A17  
 6/30/11, KPM  
 SET MAG/WASHER  
 GPS, FINREFA17  
 9/18/13, SDC

O.D.O.T. DISTRICT 2 SURVEY OFFICE

PERSONNEL

REFERENCE NO. 17 A

SHEET 18 OF 33

NOTES HARBAUGH

DATE 7/11/11

ROUTE US 20

H.C. MOSER

WEATHER CLOUDY

COUNTY SANDUSKY

R.C. LUMBREZER

TEMP. 98°

TOWNSHIP WASHINGTON

SECTION 8

T 5 N R 14 E

TYPE MONUMENT P.K./WASHER

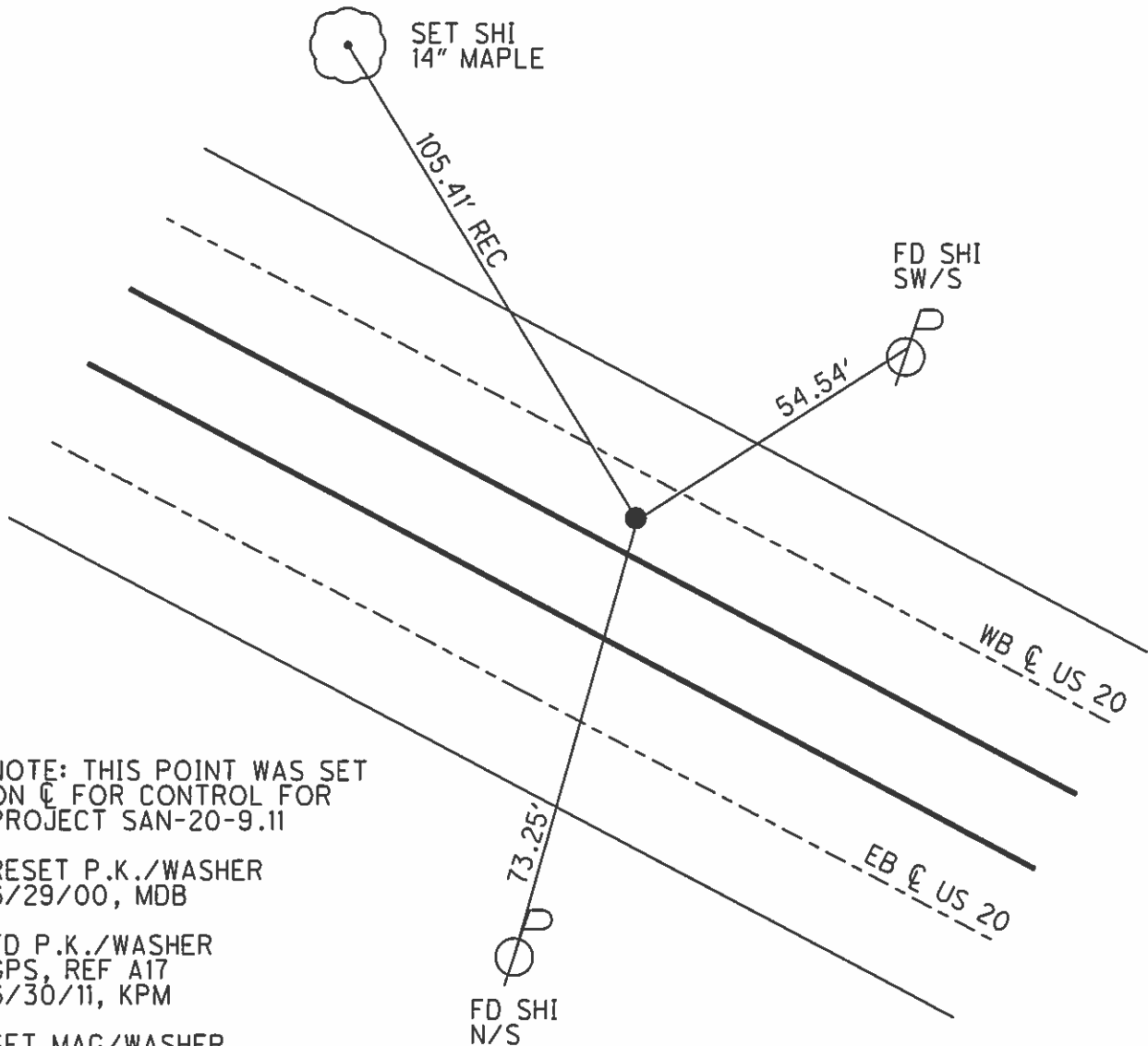
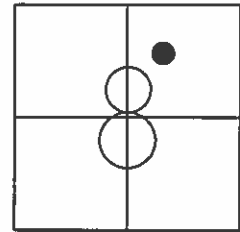
ON SURFACE - ~~BELOW~~ ON

LEFT - ☉ PAV'T - RIGHT         

4.4' TO S EDGE PAVEMENT (WB LANE)

S.L.M. 478+00

Grid: Northing: 635874.569 Easting: 1759478.547



NOTE: THIS POINT WAS SET ON ☉ FOR CONTROL FOR PROJECT SAN-20-9.11

RESET P.K./WASHER 6/29/00, MDB

FD P.K./WASHER GPS, REF A17 6/30/11, KPM

SET MAG/WASHER GPS, FINREFA17 9/18/13, SDC