

O.D.O.T. DISTRICT 2 SURVEY OFFICE (USE ONLY)

PERSONNEL

REFERENCE NO. 19 A

SHEET 21 OF 32

NOTES RHOADES

DATE 8/9/23

ROUTE US 20

H.C. AUBLE

WEATHER SUNNY

COUNTY SANDUSKY

R.C. NIESE

TEMP. 79°

TOWNSHIP WASHINGTON

ASTON

SECTION 9

DWG BY RHOADES

PID 110021

T 6 N R 14 E

TYPE MONUMENT MAG/WASHER

ON SURFACE - ~~BELOW~~ ON

OFFSET 0 PAVEMENT - LT : RT

- TO - EDGE PAVEMENT

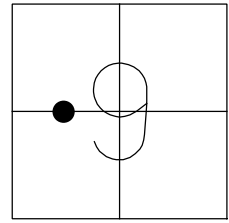
STATION: 500+10

HORIZ.DATUM: NAD83 2011

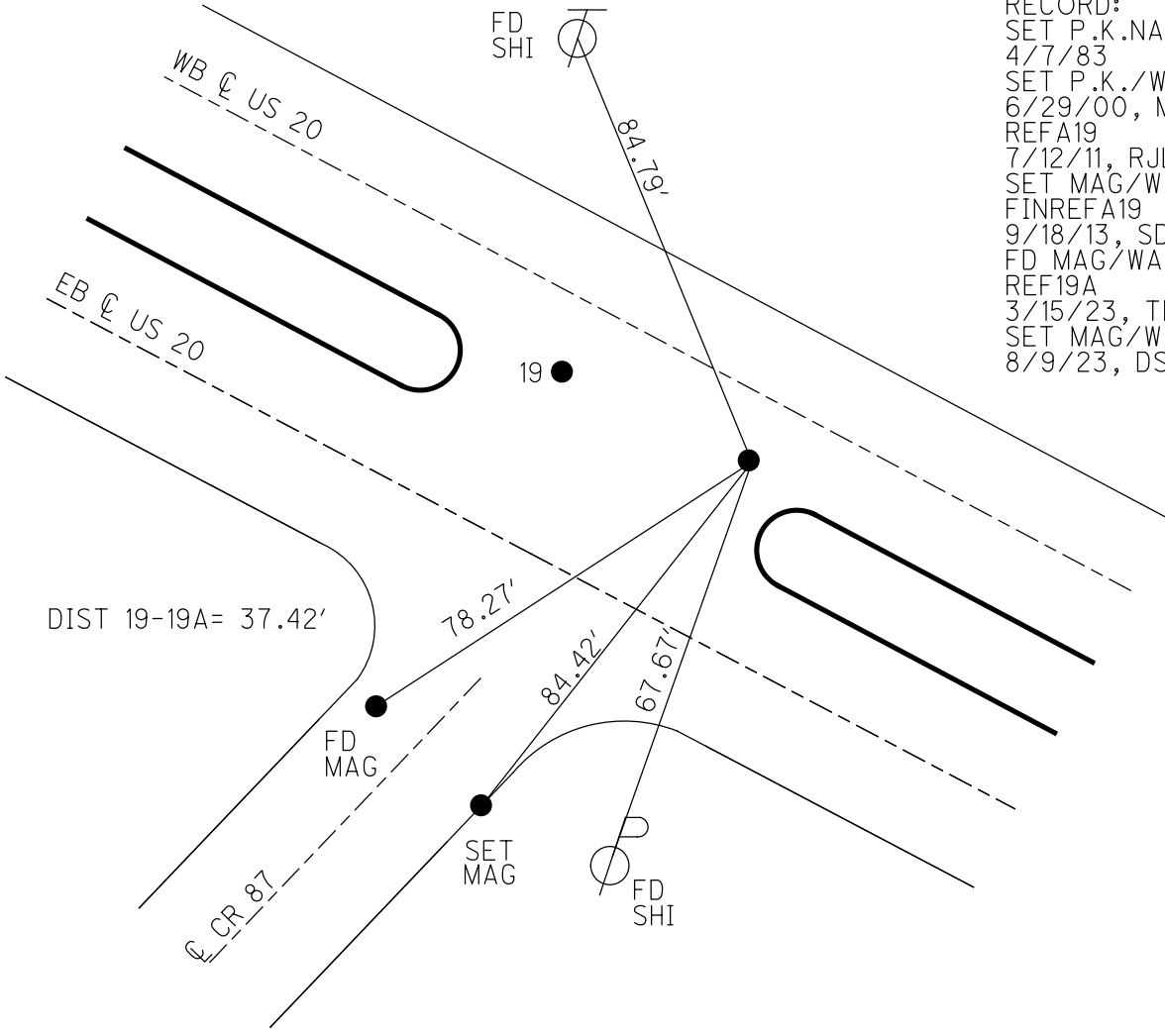
GEOID: NAVD88 2018

GRID: NORTHING: 634775.916

EASTING: 1761448.943



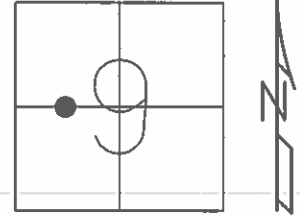
RECORD:
 SET P.K.NAIL
 4/7/83
 SET P.K./WASHER
 6/29/00, MB
 REFA19
 7/12/11, RJL
 SET MAG/WASHER
 FINREFA19
 9/18/13, SDC
 FD MAG/WASHER
 REF19A
 3/15/23, TDN
 SET MAG/WASHER
 8/9/23, DSA



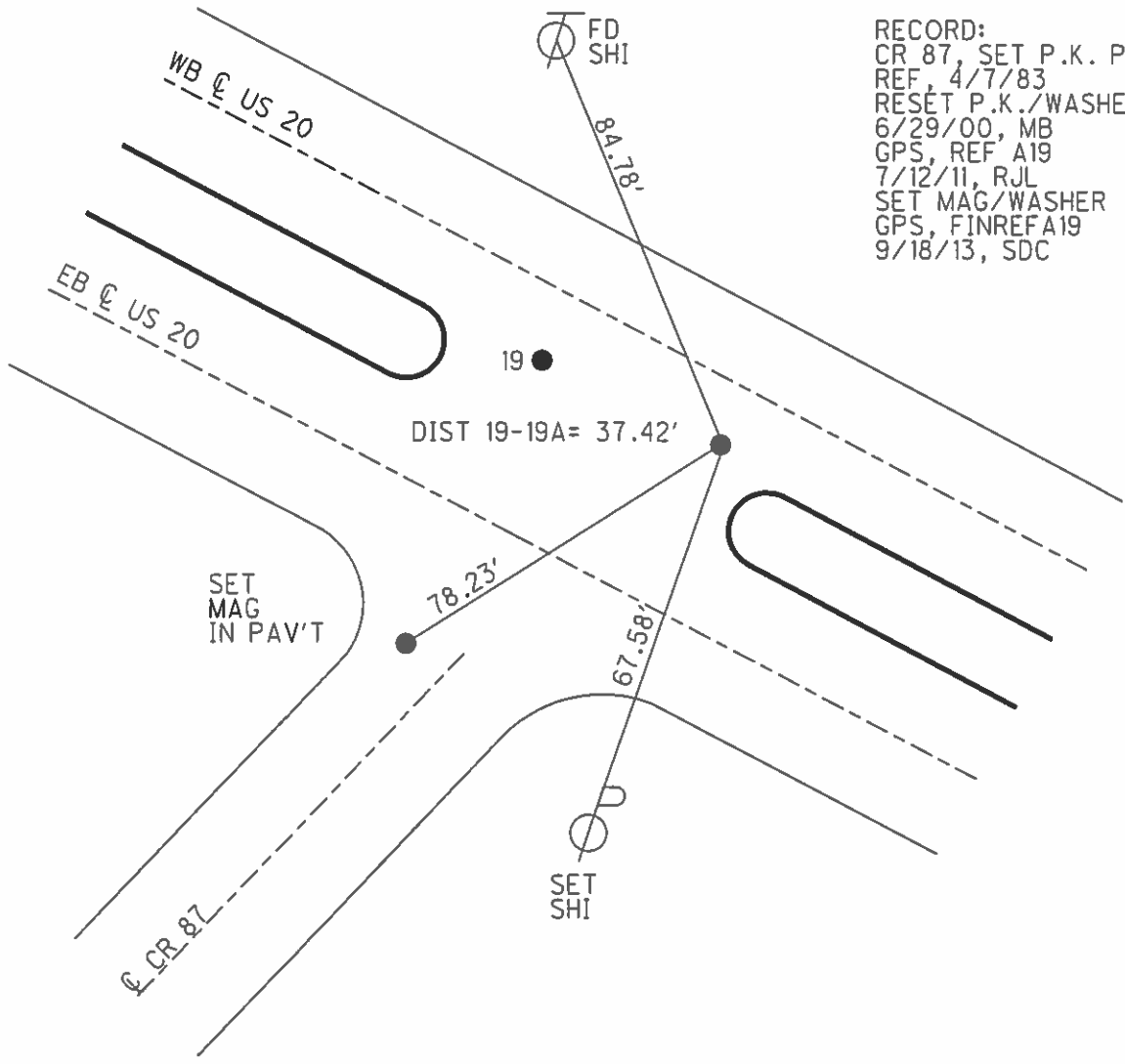
O.D.O.T. DISTRICT 2 SURVEY OFFICE (USE ONLY)

PERSONNEL _____ REFERENCE NO. 19 A SHEET 22 OF 33
 NOTES HARBAUGH DATE 7/11/11 ROUTE US 20
 H.C. MOSER WEATHER CLOUDY COUNTY SANDUSKY
 R.C. LUMBREZER TEMP. 98° TOWNSHIP WASHINGTON
 _____ SECTION 9
 _____ T 5 N R 14 E

TYPE MONUMENT P.K./WASHER
 ON SURFACE - ~~BELOW~~ ON _____
 LEFT - ☉ PAV'T - RIGHT _____
 _____ TO _____ EDGE PAVEMENT
 S.L.M. 500+10



GRID: NORTHING: 634775.936 EASTING: 1761448.915



RECORD:
 CR 87, SET P.K. PER
 REF, 4/7/83
 RESET P.K./WASHER
 6/29/00, MB
 GPS, REF A19
 7/12/11, RJL
 SET MAG/WASHER
 GPS, FINREFA19
 9/18/13, SDC

O.D.O.T. DISTRICT 2 SURVEY OFFICE

PERSONNEL

REFERENCE NO. 19 A

SHEET 22 OF 33

NOTES HARBAUGH

DATE 7/11/11

ROUTE US 20

H.C. MOSER

WEATHER CLOUDY

COUNTY SANDUSKY

R.C. LUMBREZER

TEMP. 98°

TOWNSHIP WASHINGTON

SECTION 9

T 5 N R 14 E

TYPE MONUMENT P.K./WASHER

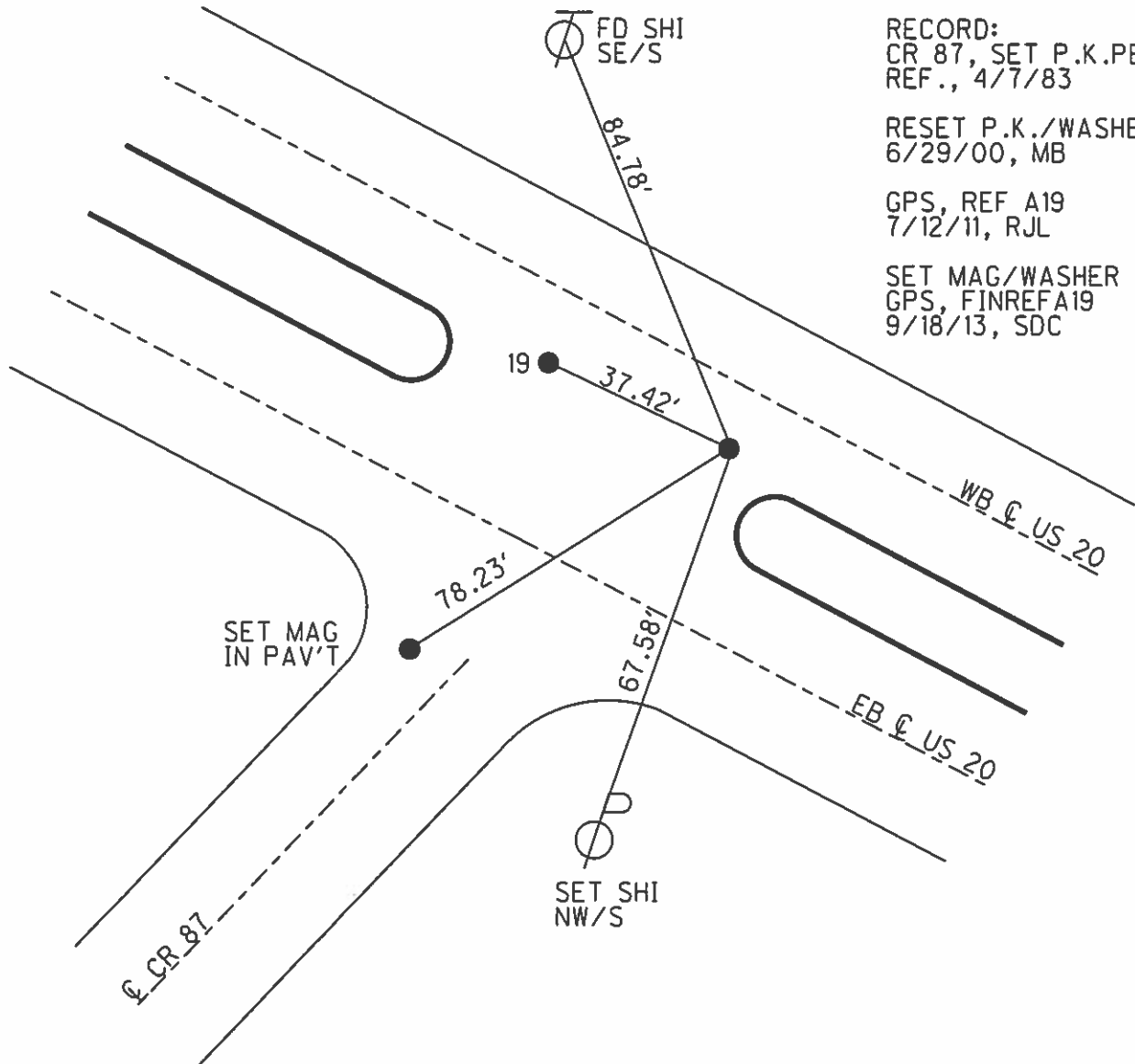
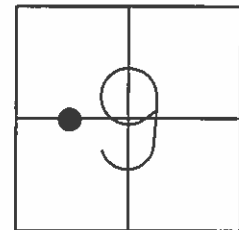
ON SURFACE - ~~BELOW~~ ON

LEFT - ☉ PAV'T - RIGHT

 TO EDGE PAVEMENT

S.L.M. 500+10

Grid: Northing: 634775.936 Easting: 1761448.915



RECORD:
CR 87, SET P.K.PER
REF., 4/7/83

RESET P.K./WASHER
6/29/00, MB

GPS, REF A19
7/12/11, RJL

SET MAG/WASHER
GPS, FINREF A19
9/18/13, SDC

County Sandusky S.R. US#20

Date 7 April 83

Township Washington

Weather Cloudy

Section 9

Temp. 45°

T_N, R_E

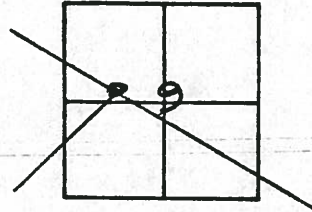
Personnel I. Stone

R. Michalak

D. Curtis

P. Neuser

19A



499+76
500+10

REF. No. 19

CHENEY
RIPPLE
BARBOUR
GEYMAN

RE-SET. PK'S & WASHERS

9-17-1971
70°

4/01/91

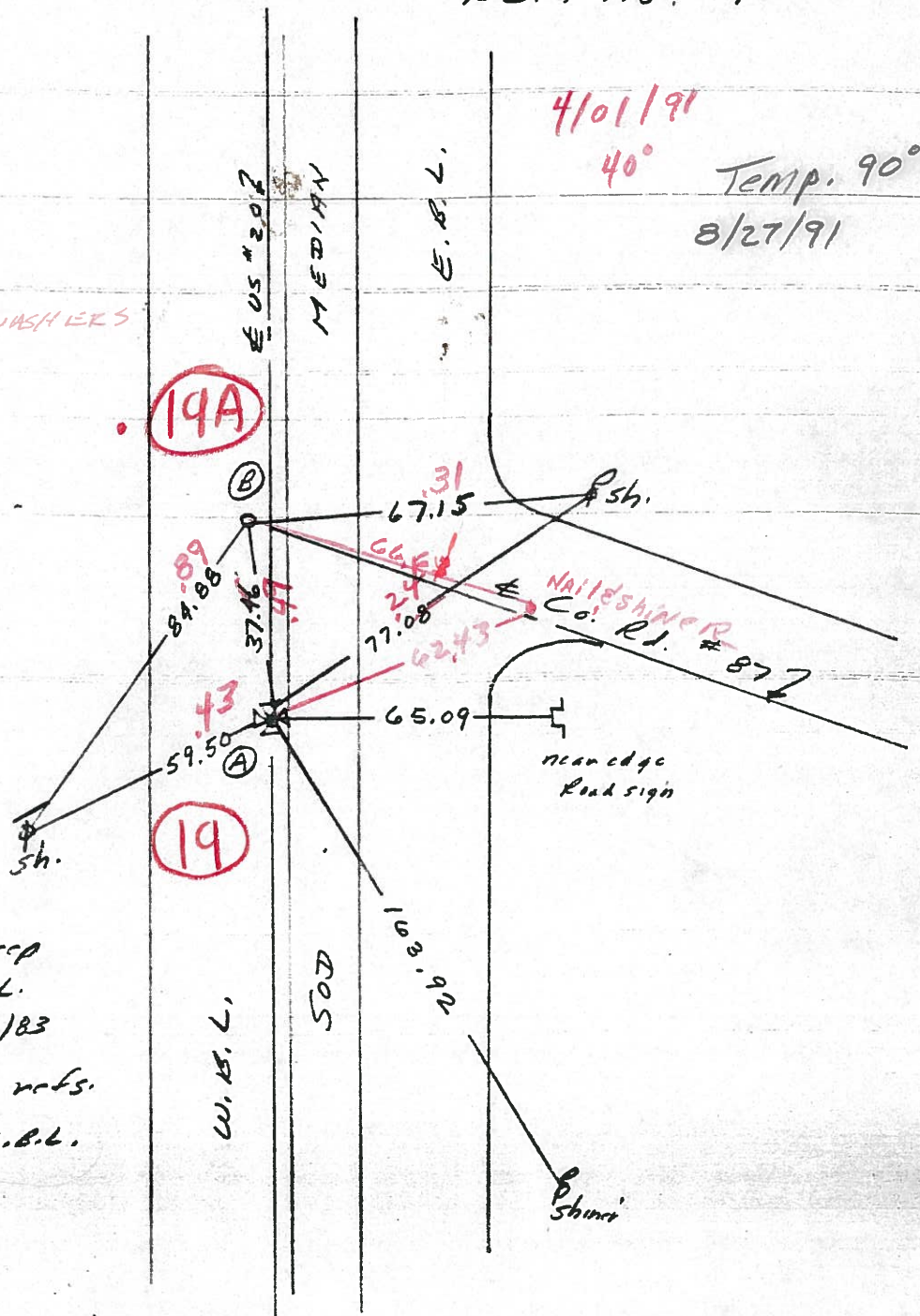
40°

Temp. 90°

8/27/91

19A

19



P.I. Sta. 500+18.75
139496.00

A = Ed. 4" on brick 6" deep
5.7' S. to S. edge W.B.L.
Set small RR Spk. 8/8/83

B = Set PK Nail as per refs.
5.7' S. to S. edge W.B.L.
OK 8/8/83

County Sandusky S.R. US #20

Date 7 April 83

Township Washington

Weather Cloudy

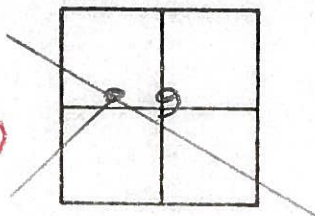
Section 9

Temp. 45°

T_N, R_E

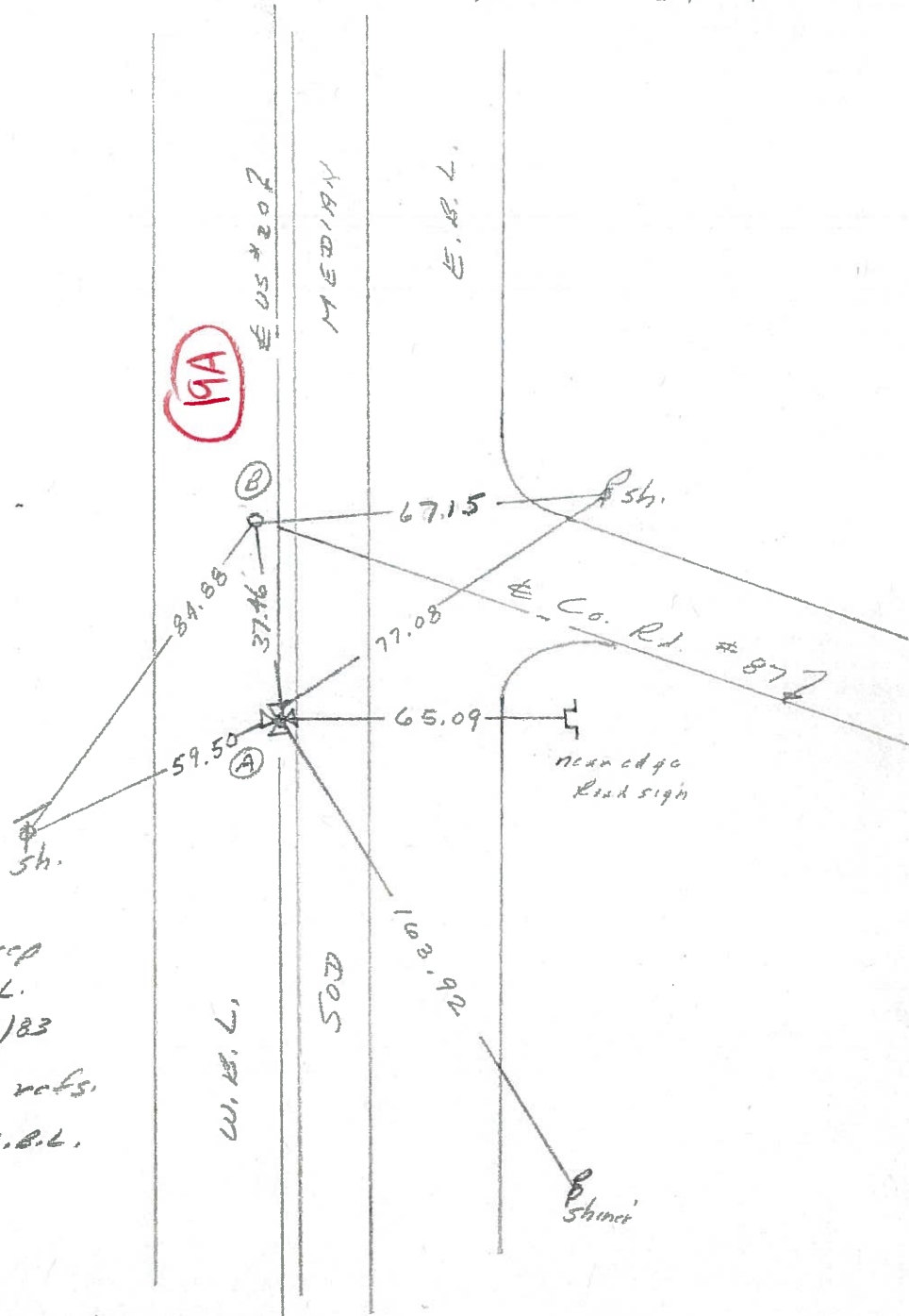
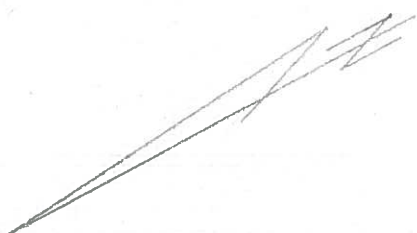
Personnel I. Stone
R. Michalak
D. Curtis
P. Newson

19A



499+76
500+10

REF. No. 19



P.I. Sta. 500+18.75
139+96.00

- Ⓐ = Fd. " on brick 6" deep
5.7' S. to S. edge W.B.L.
Set small RR Spt. 8/8/83
- Ⓑ = Set PK Nail as per refs.
5.7' S. to S. edge W.B.L.
OK 8/8/83