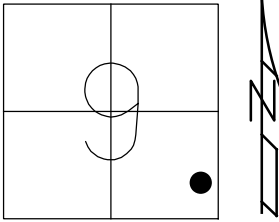


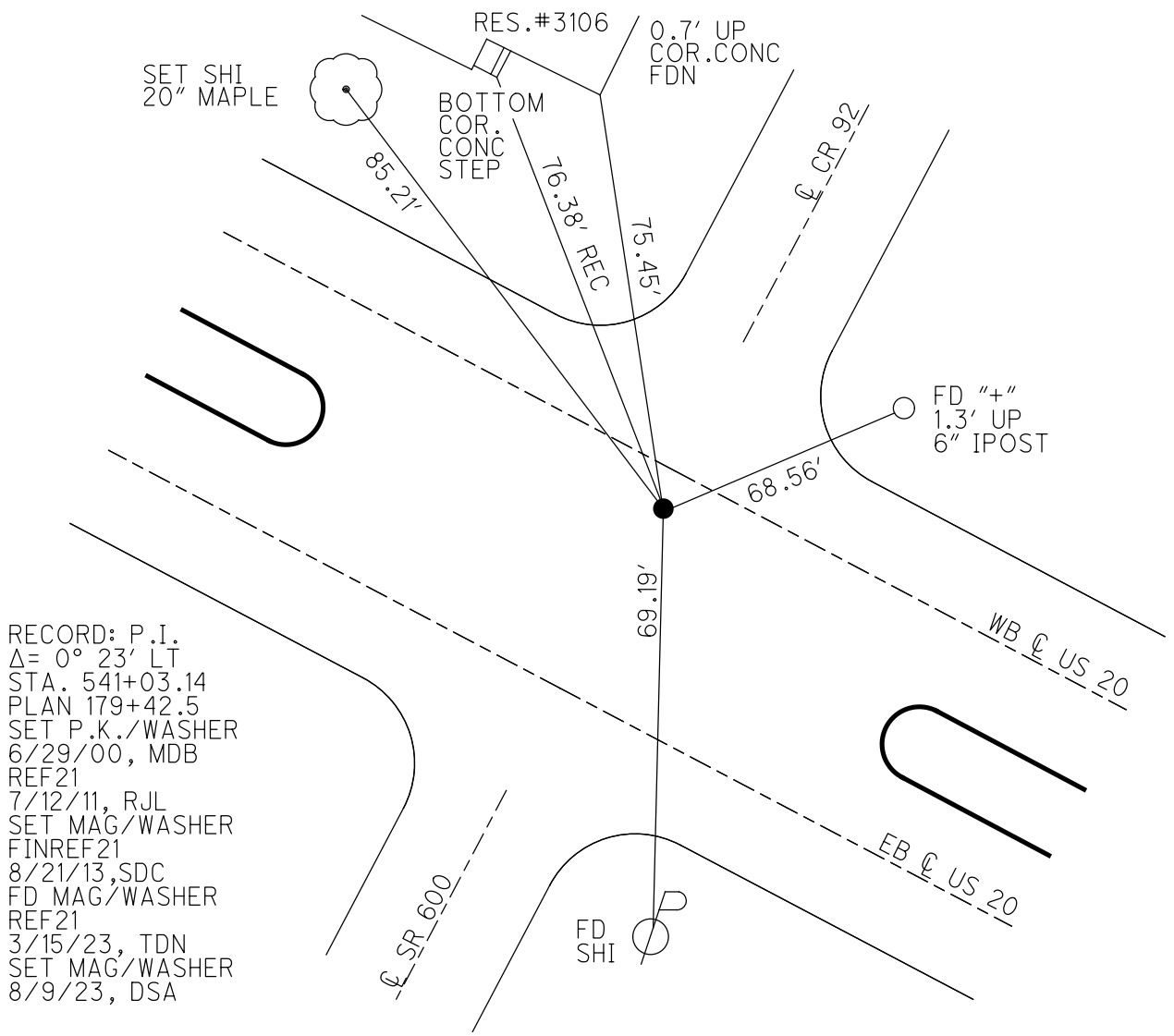
O.D.O.T. DISTRICT 2 SURVEY OFFICE (USE ONLY)

PERSONNEL _____ REFERENCE NO. 21 SHEET 23 OF 32
 NOTES RHOADES DATE 8/9/23 ROUTE US 20
 H.C. AUBLE WEATHER SUNNY COUNTY SANDUSKY
 R.C. NIESE TEMP. 79° TOWNSHIP WASHINGTON
 ASTON SECTION 9
 DWG BY RHOADES PID 110021 T 6 N R 14 E

TYPE MONUMENT MAG/WASHER
 ON SURFACE - ~~BELOW~~ ON _____
 OFFSET 6.0' Q PAVEMENT _____ LT : RT
TO S EDGE PAVEMENT
 STATION: 540+50



HORZ.DATUM: NAD83 2011 GEOID: NAVD88 2018
 GRID: NORTHING: 632769.843 EASTING: 1764962.435



RECORD: P.I.
 $\Delta = 0^\circ 23' \text{ LT}$
 STA. 541+03.14
 PLAN 179+42.5
 SET P.K./WASHER
 6/29/00, MDB
 REF21
 7/12/11, RJL
 SET MAG/WASHER
 FINREF21
 8/21/13, SDC
 FD MAG/WASHER
 REF21
 3/15/23, TDN
 SET MAG/WASHER
 8/9/23, DSA

O.D.O.T. DISTRICT 2 SURVEY OFFICE

PERSONNEL

REFERENCE NO. 21

SHEET 24 OF 33

NOTES CODER _____

DATE 7/12/11

ROUTE US 20

H.C. ROUSOS

WEATHER SUNNY

COUNTY SANDUSKY

R.C. WESTFALL

TEMP. 86°

TOWNSHIP WASHINGTON

SECTION 9

T 5 N R 14 E

TYPE MONUMENT MAG/WASHER

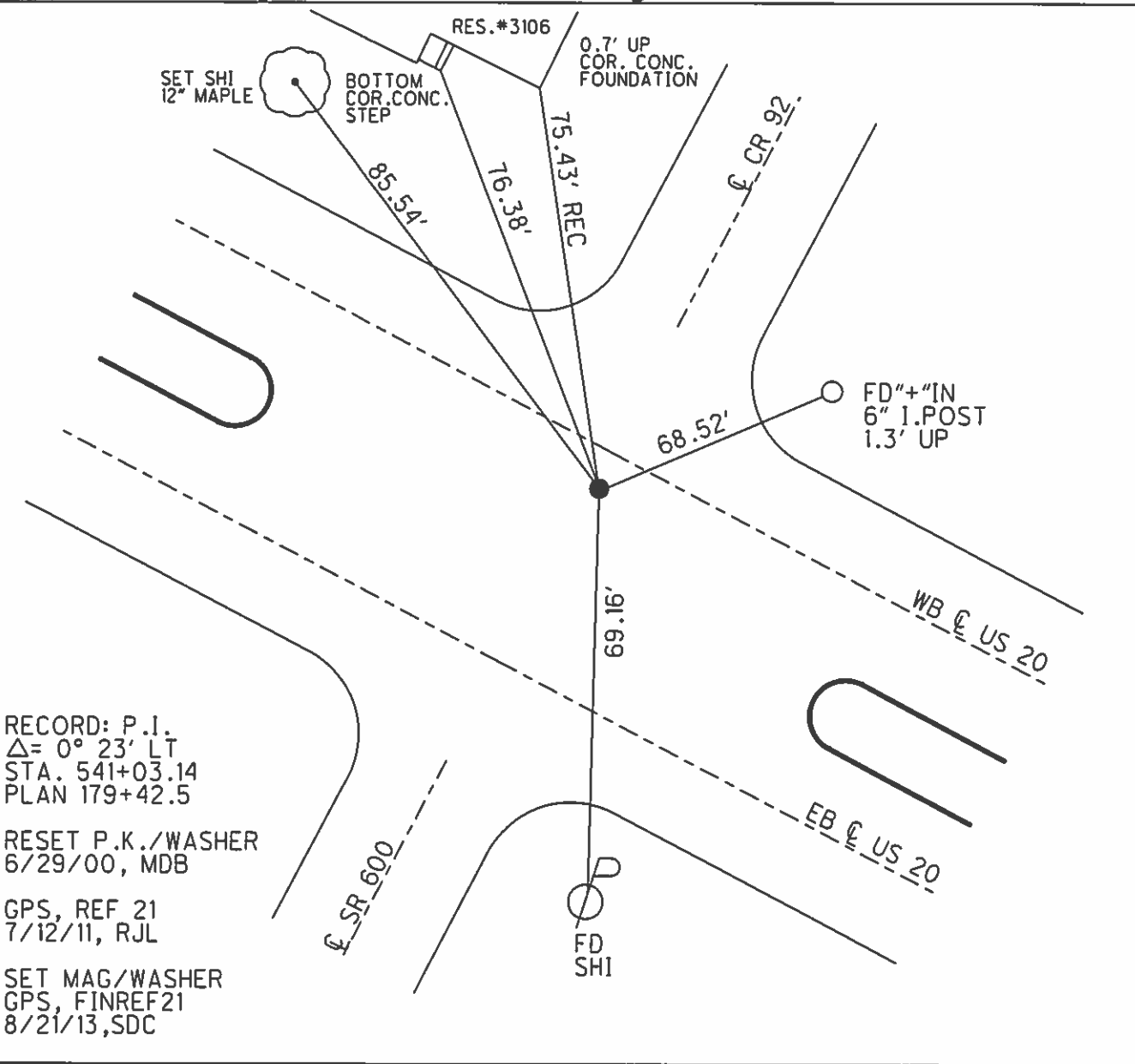
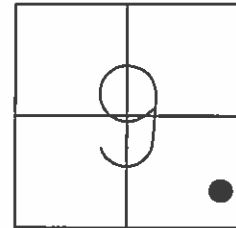
ON SURFACE - ~~BELOW~~ ON _____

LEFT - Q PAV'T - RIGHT _____

6.0' TO S EDGE PAVEMENT

S.L.M. 540+50

Grid: Northing: 632769.888 Easting: 1764962.383



RECORD: P.I.
 $\Delta = 0^\circ 23' \text{ LT}$
 STA. 541+03.14
 PLAN 179+42.5

RESET P.K./WASHER
 6/29/00, MDB

GPS, REF 21
 7/12/11, RJL

SET MAG/WASHER
 GPS, FINREF21
 8/21/13, SDC

O.D.O.T. DISTRICT 2 SURVEY OFFICE

PERSONNEL

REFERENCE NO. 21

SHEET 10 OF 19

NOTES Cheney

H.C. RIPPLE

R.C. BARBOUR

Geyman

DATE 9/17/91

WEATHER Sunny

TEMP. 70°

ROUTE US #20

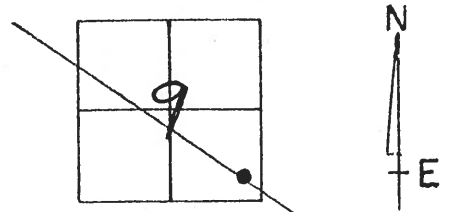
COUNTY SANDUSKY

TOWNSHIP Washington

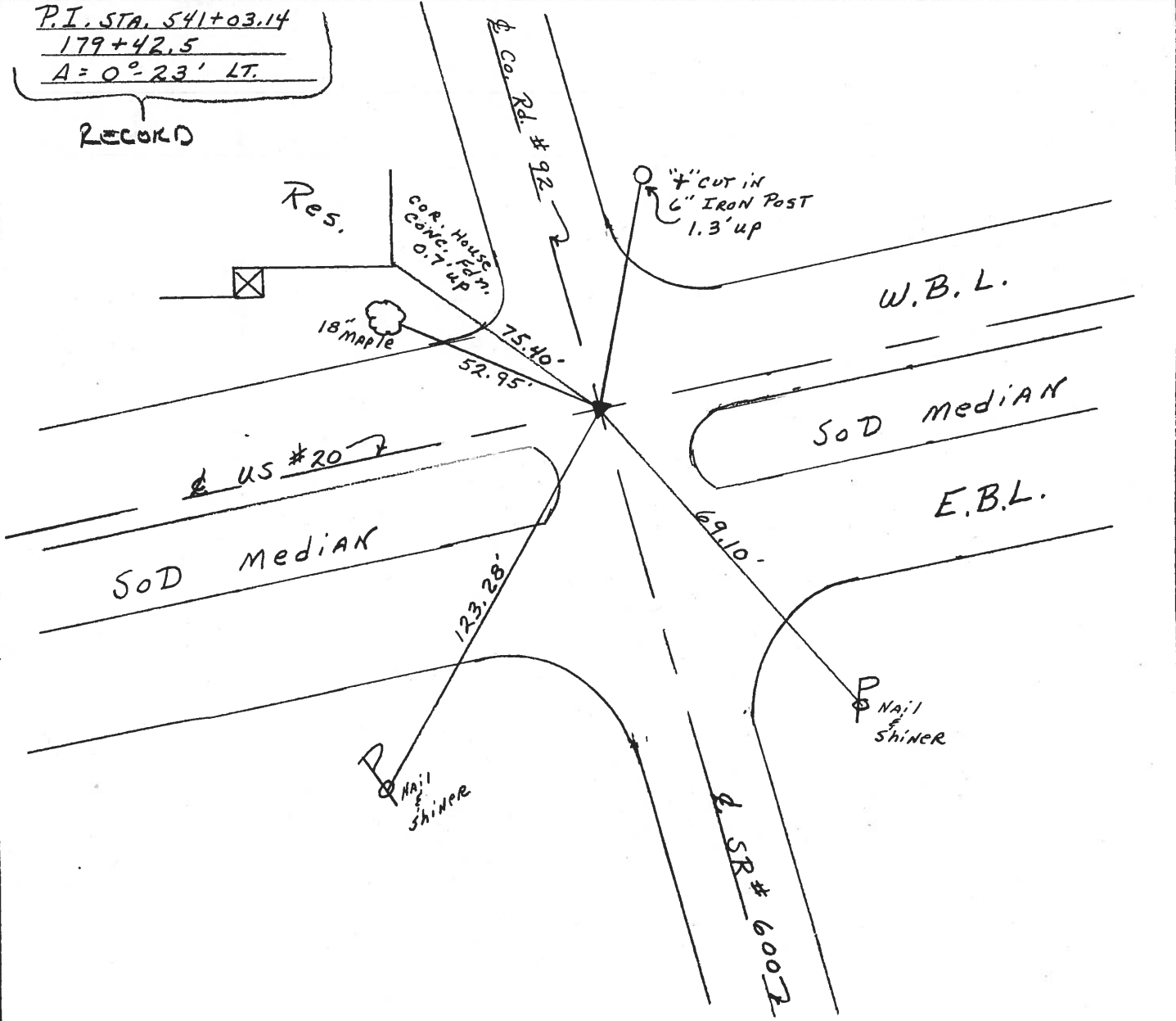
SECTION 9

T 5 N R 14 E

TYPE MONUMENT PI. PK. NAIL & WASHER
 ON SURFACE - BELOW R/R. Spk. 3.5" ± deep 8/8/83
~~LEFT - & RIGHT~~ - RIGHT
6.0 TO 5 EDGE PAVEMENT W. B.L.
 S.L.M. 540+50



P.I. STA. 541+03.14
179+42.5
A = 0° 23' LT.
 RECORD



Q.D.O.T. DISTRICT 2 SURVEY OFFICE

SHEET 10 OF

County Sandusky S.R. US #20

Date 7 April 83

Township Washington

Weather Cloudy

Section 9

Temp. 45°

T N, R E

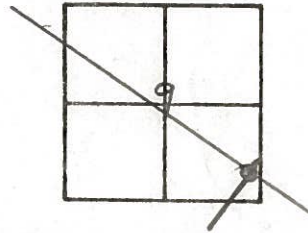
Personnel I. Stone

P. Neusev

R. Michalak

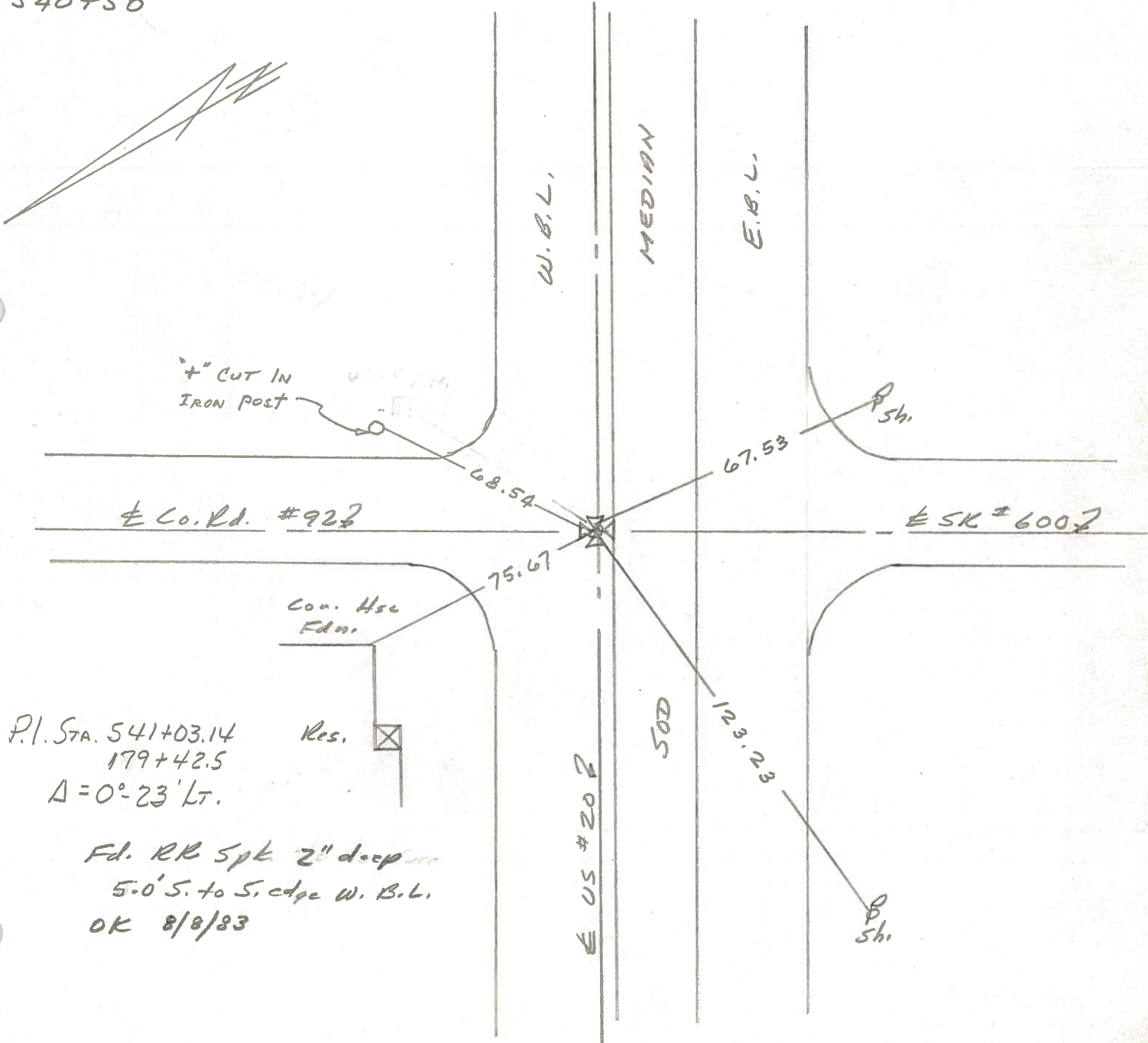
D. Curtis

(21)



540+50

REF. NO. 21

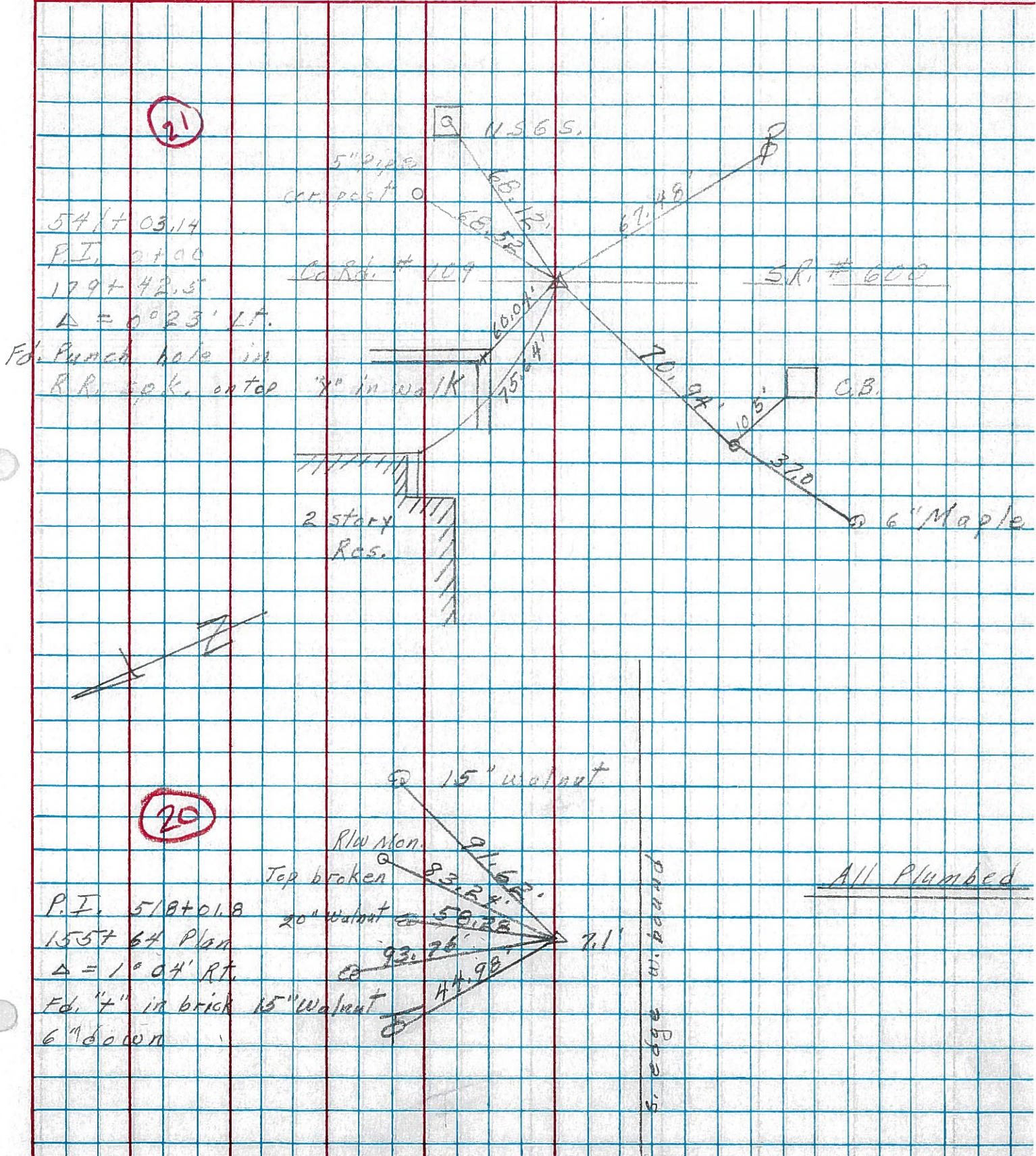


P.I. STA. 541+03.14
179+42.5
Δ = 0°-23' LT.

Fd. RR Spk 2" deep
5.0' S. to S. edge W. B.L.
OK 8/8/83

PERSONNEL	TITLE	PERSONNEL	TITLE	COUNTY	DATE	WEATHER	TEMP
Schneider				Sandusky	8-10-73	HOT	85°
Mosser				S. R. U.S. # 20			
Barbour				SEC. 9			
Geyman							

DESCRIPTION Washington Twp. JOB NO. _____



PERSONNEL	TITLE	PERSONNEL	TITLE	COUNTY	DATE
Schneider				Sandusky	Dec-1967
Mosser				S. R. U.S. #20	WEATHER
Barbour				SEC. S.R. #199 East	TEMP.
Potts					

DESCRIPTION Ties for control Points JOB NO. _____

