

O.D.O.T. DISTRICT 2 SURVEY OFFICE (USE ONLY)

PERSONNEL

REFERENCE NO. 24

SHEET 28 OF 33

NOTES RHOADES

DATE 8/9/23

ROUTE US 20

H.C. AUBLE

WEATHER SUNNY

COUNTY SANDUSKY

R.C. NIESE

TEMP. 79°

TOWNSHIP WASHINGTON

ASTON

SECTION 15

DWG BY RHOADES PID 110021

T 5 N R 14 E

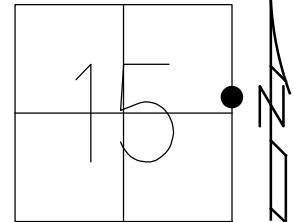
TYPE MONUMENT MAG/WASHER

ON SURFACE - ~~BELOW~~ ON

OFFSET ☐ PAVEMENT 16.1' LT : ~~RT~~

2.9' TO S EDGE OF BERM

STATION: 603+66.25



HORZ.DATUM: NAD83 2011

GEOID: NAVD88 2018

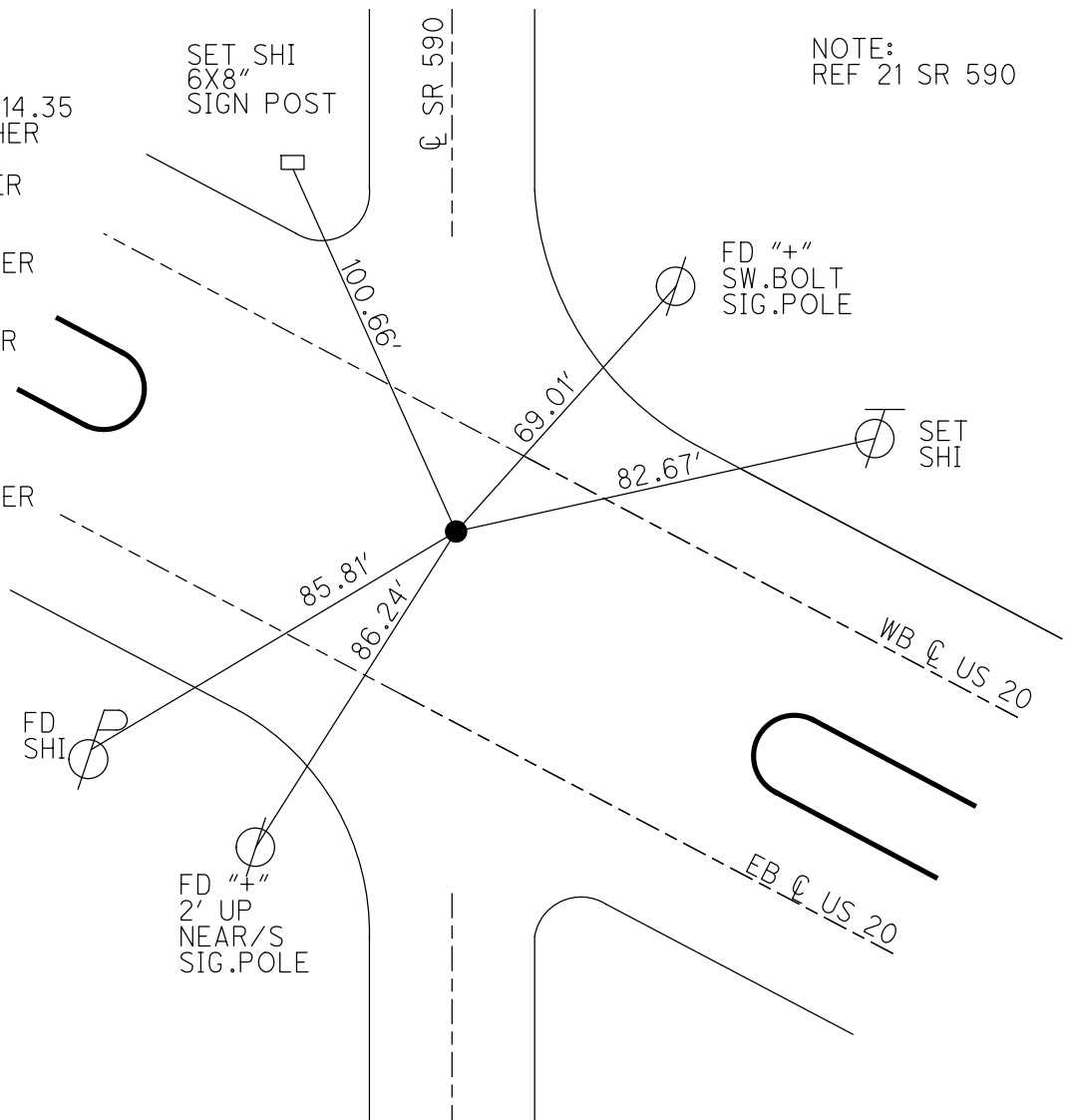
GRID: NORTHING: 629631.023

EASTING: 1770438.290

RECORD: P.I.  
 $\Delta = 0^\circ 10.3' \text{ LT}$   
 1946 PLAN 63+14.35  
 SET P.K./WASHER  
 6/29/00, MDB  
 FD P.K./WASHER  
 REF24  
 7/12/11, RJL  
 SET MAG/WASHER  
 FINREF24  
 8/21/13, SDC  
 FD MAG/WASHER  
 REFA21  
 3/28/16, JFO  
 FD MAG SHANK  
 REF24  
 3/15/23, TDN  
 SET MAG/WASHER  
 8/9/23, DSA

SET SHI  
 6X8"  
 SIGN POST

NOTE:  
 REF 21 SR 590

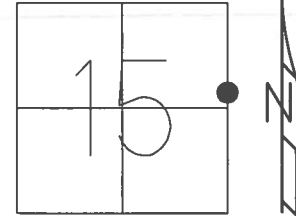


**O.D.O.T. DISTRICT 2 SURVEY OFFICE (USE ONLY)**

PERSONNEL \_\_\_\_\_ REFERENCE NO. 24 SHEET 28 OF 33

NOTES	<u>CODER</u>	DATE	<u>8/21/13</u>	ROUTE	<u>US 20</u>
H.C.	<u>ROUSOS</u>	WEATHER	<u>CLEAR</u>	COUNTY	<u>SANDUSKY</u>
R.C.	<u>WESTFALL</u>	TEMP.	<u>80°</u>	TOWNSHIP	<u>WASHINGTON</u>
				SECTION	<u>15</u>
				T	<u>5</u> N R <u>14</u> E

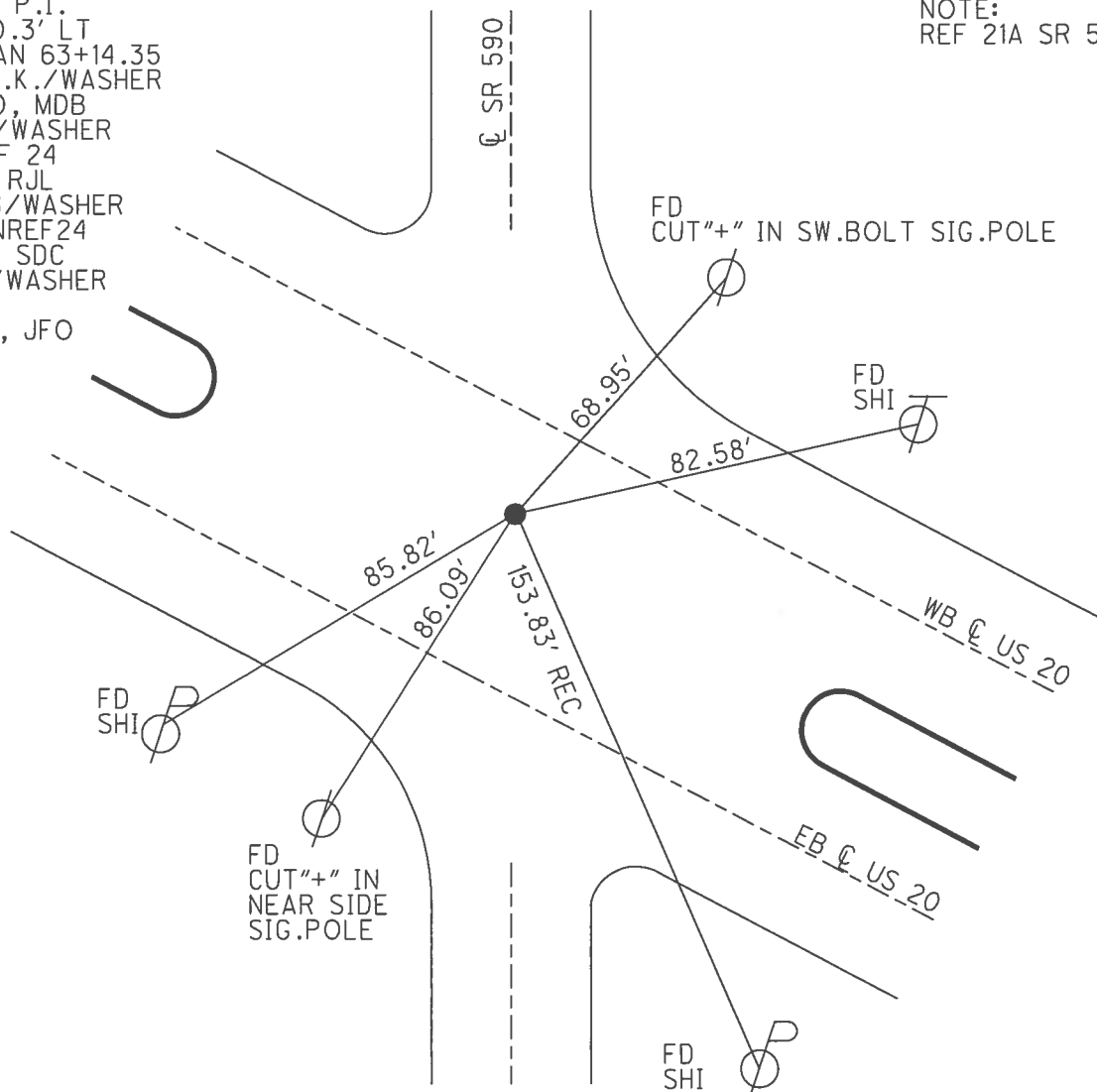
TYPE MONUMENT MAG/WASHER  
 ON SURFACE - ~~BELOW~~ ON \_\_\_\_\_  
 LEFT - ☉ PAV'T - ~~RIGHT~~ 16.1' (WB LANE)  
2.9' TO S EDGE PAVEMENT  
 S.L.M. 603+66.25



GRID: NORTHING: 629630.979 EASTING: 1770438.320

RECORD: P.I.  
 $\Delta = 0^\circ 10.3' \text{ LT}$   
 1946 PLAN 63+14.35  
 RESET P.K./WASHER  
 6/29/00, MDB  
 FD P.K./WASHER  
 GPS, REF 24  
 7/12/11, RJL  
 SET MAG/WASHER  
 GPS, FINREF24  
 8/21/13, SDC  
 FD MAG/WASHER  
 REFA21  
 3/28/16, JFO

NOTE:  
 REF 21A SR 590

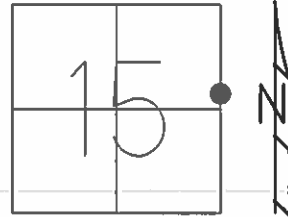


**O.D.O.T. DISTRICT 2 SURVEY OFFICE (USE ONLY)**

PERSONNEL \_\_\_\_\_ REFERENCE NO. 24 SHEET 28 OF 33

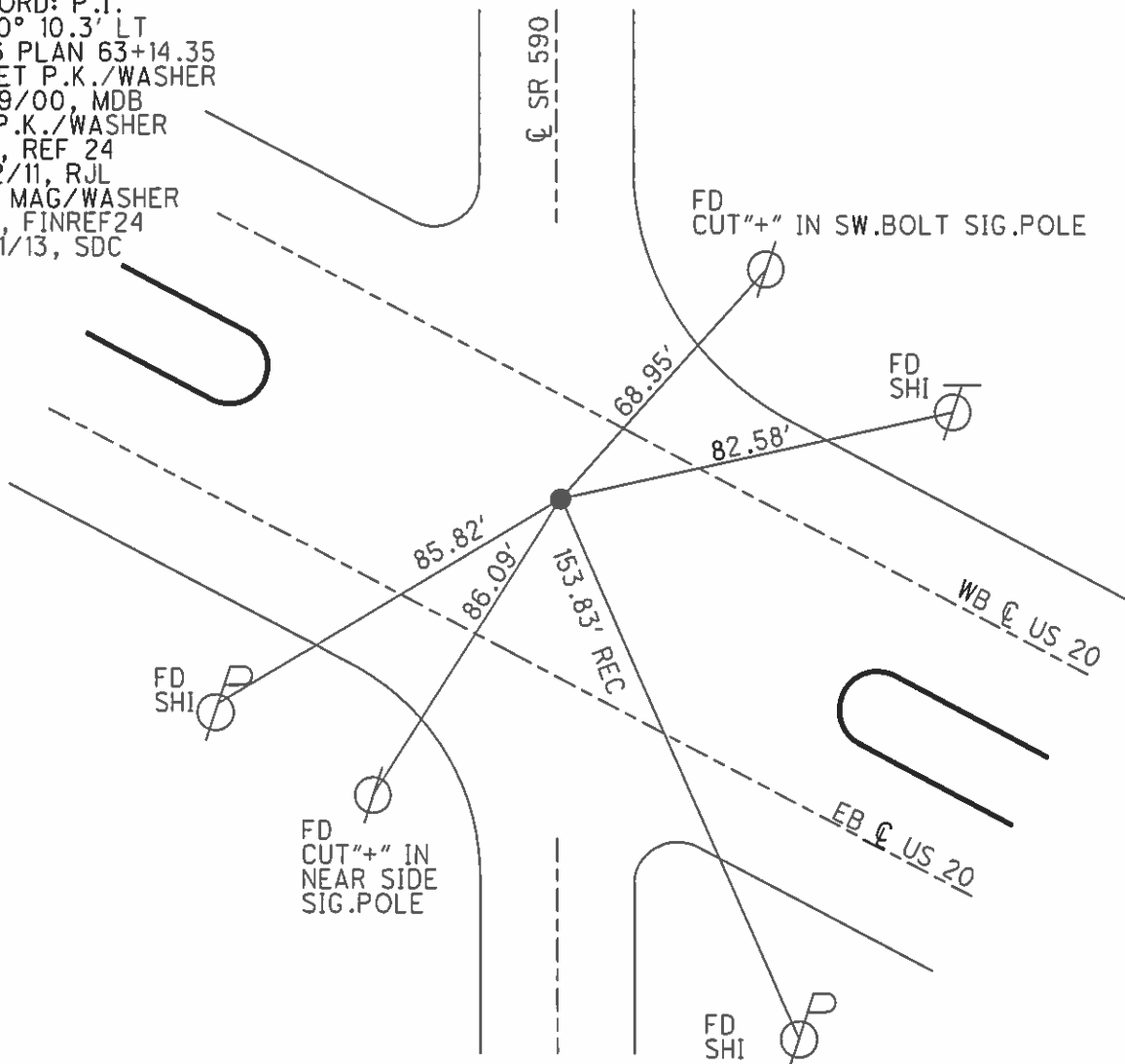
NOTES CODER \_\_\_\_\_ DATE 8/21/13 ROUTE US 20  
 H.C. ROUSOS \_\_\_\_\_ WEATHER CLEAR COUNTY SANDUSKY  
 R.C. WESTFALL \_\_\_\_\_ TEMP. 80° TOWNSHIP WASHINGTON  
 \_\_\_\_\_ SECTION 15  
 \_\_\_\_\_ T 5 N R 14 E

TYPE MONUMENT MAG/WASHER  
 ON SURFACE - ~~BELOW~~ ON \_\_\_\_\_  
 LEFT - ☉ PAV'T - ~~RIGHT~~ 16.1' (WB LANE)  
2.9' TO S EDGE PAVEMENT  
 S.L.M. 603+66.25



GRID: NORTHING: 629631.072 EASTING: 1770438.202

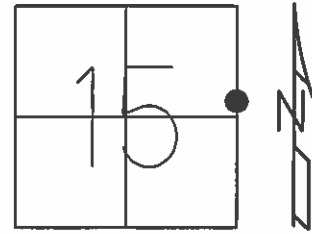
RECORD: P.I.  
 $\Delta = 0^\circ 10.3' \text{ LT}$   
 1946 PLAN 63+14.35  
 RESET P.K./WASHER  
 6/29/00, MDB  
 FD P.K./WASHER  
 GPS, REF 24  
 7/12/11, RJL  
 SET MAG/WASHER  
 GPS, FINREF24  
 8/21/13, SDC



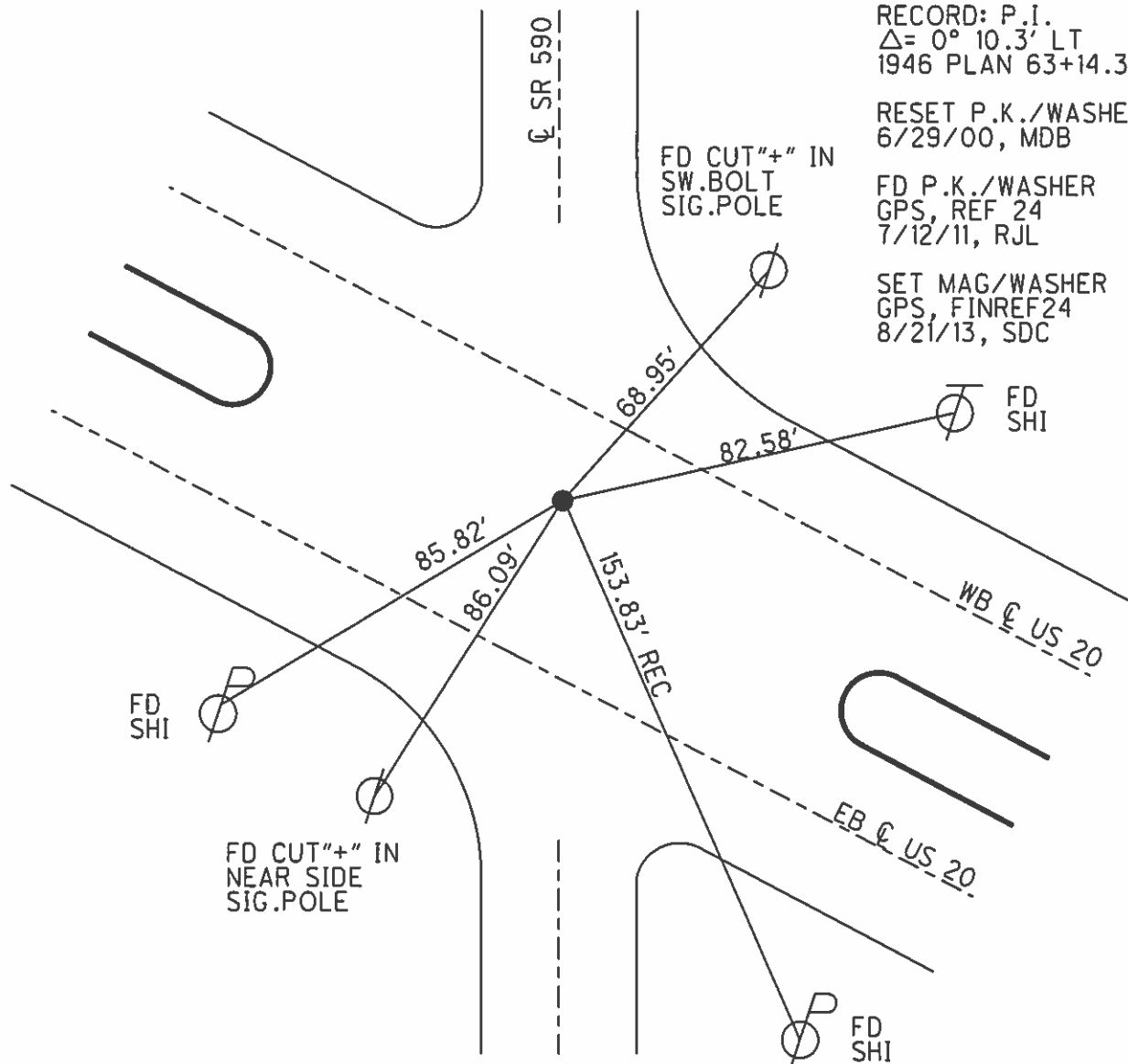
O.D.O.T. DISTRICT 2 SURVEY OFFICE

PERSONNEL	REFERENCE NO. <u>24</u>	SHEET <u>28</u> OF <u>33</u>
NOTES <u>CODER</u>	DATE <u>8/21/13</u>	ROUTE <u>US 20</u>
H.C. <u>ROUSOS</u>	WEATHER <u>CLEAR</u>	COUNTY <u>SANDUSKY</u>
R.C. <u>WESTFALL</u>	TEMP. <u>80°</u>	TOWNSHIP <u>WASHINGTON</u>
		SECTION <u>15</u>
		T <u>5</u> N R <u>14</u> E

TYPE MONUMENT MAG/WASHER  
 ON SURFACE - ~~BELOW~~ ON  
 LEFT - Q PAV'T - ~~RIGHT~~ 16.1' (WB LANE)  
2.9' TO S EDGE PAVEMENT  
 S.L.M. 603+66.25  
 Grid: Northing: 629631.072 Easting: 1770438.202



RECORD: P.I.  
 $\Delta = 0^\circ 10.3' \text{ LT}$   
 1946 PLAN 63+14.35  
 RESET P.K./WASHER  
 6/29/00, MDB  
 FD P.K./WASHER  
 GPS, REF 24  
 7/12/11, RJL  
 SET MAG/WASHER  
 GPS, FINREF24  
 8/21/13, SDC



County Sandusky S.R. US#20

Date 7 April 83

Township Washington

Weather Cloudy

Section 15

Temp. 45°

T    N, R    E

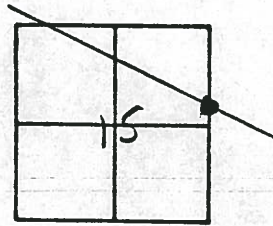
Personnel L. Stone

P. Neuser

R. Michalak

D. Curtis

**24**

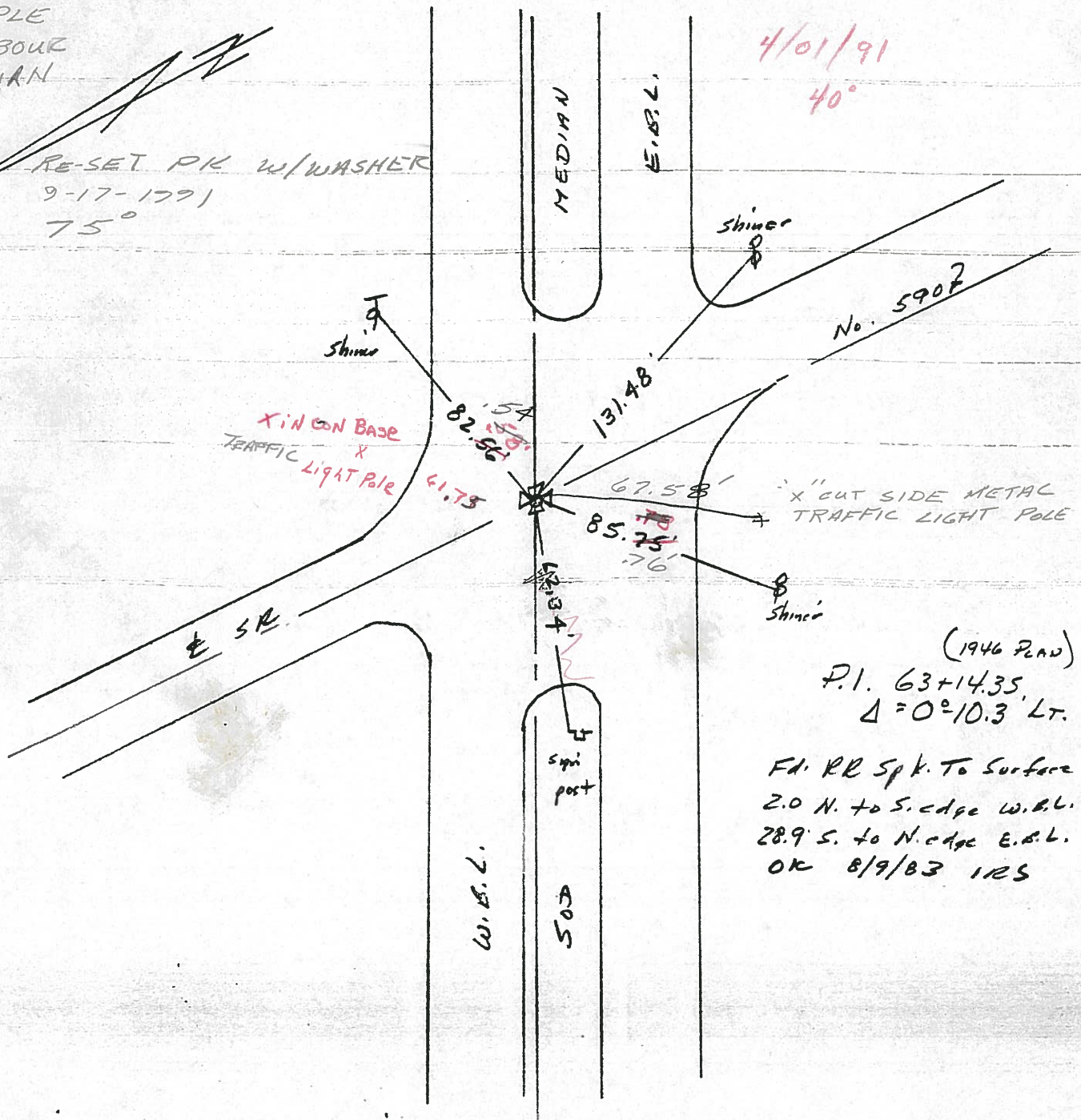


CHENEY  
RIPPLE  
BARBOUR  
GEYMAN

REF. NO. 24

4/01/91  
40°

RE-SET PK W/WASHER  
9-17-1991  
75°



Q.D.O.T. DISTRICT 2 SURVEY OFFICE

SHEET 14 OF \_\_\_\_\_

County Sandusky S.R. US#20

Date 7 April 83

Township Washington

Weather Cloudy

Section 15

Temp. 45°

T\_N, R\_E

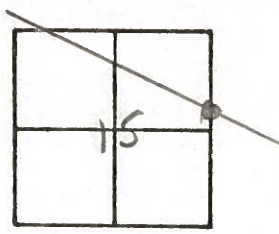
Personnel I. Stone

P. Neusev

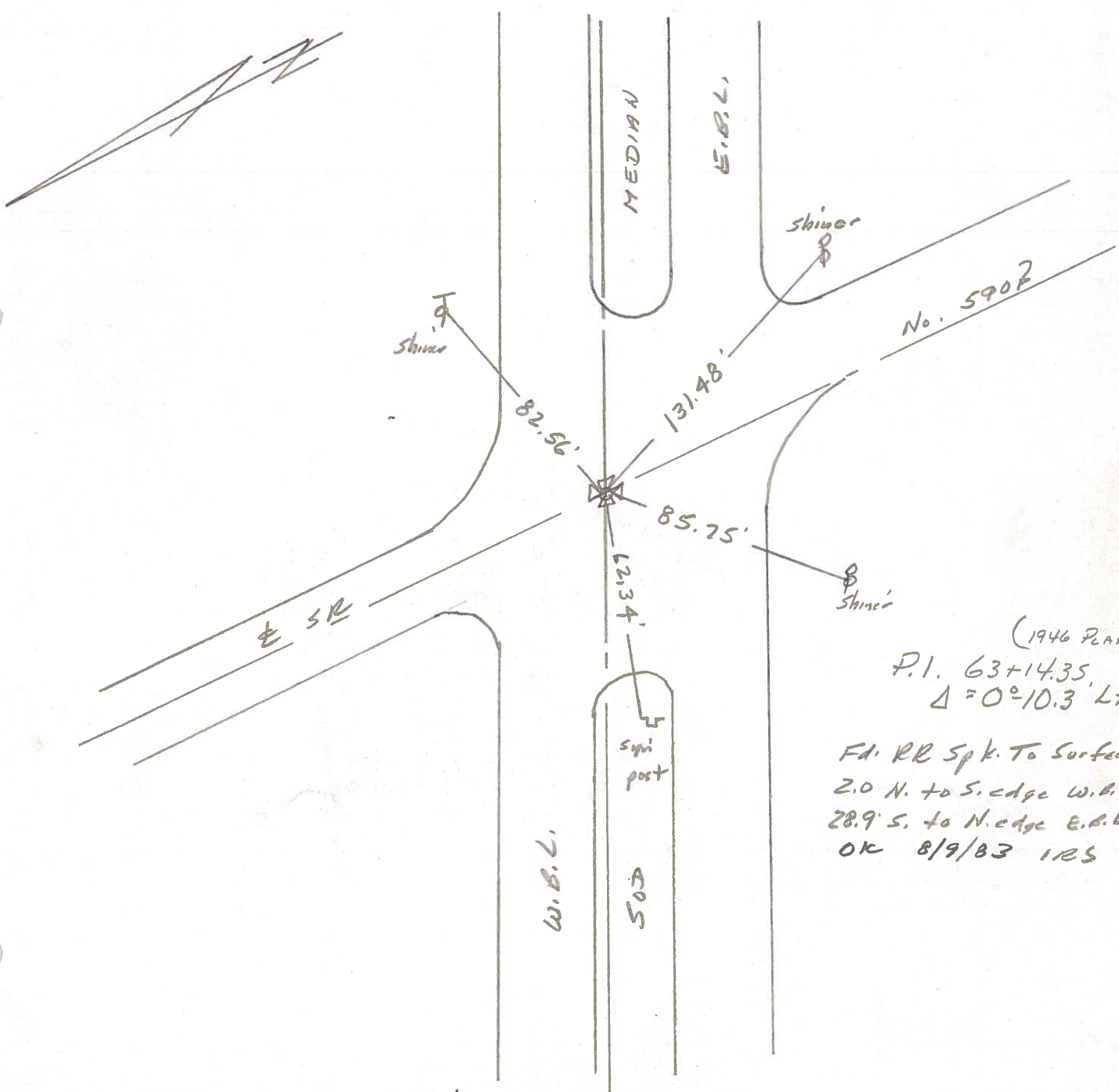
R. Michalak

D. Curtis

**24**



REF. NO. 24



(1946 PLAN)  
P.I. 63+14.35  
 $\Delta = 0^{\circ}10.3' LT.$

Fd. RR Spk. To Surface  
2.0 N. to S. edge W.B.L.  
28.9 S. to N. edge E.B.L.  
OK 8/9/83 IRS

PERSONNEL TITLE PERSONNEL TITLE

COUNTY Sandusky DATE 8-13-73

S. R. 20 WEATHER Hot

SEC. 14 TEMP. 85°

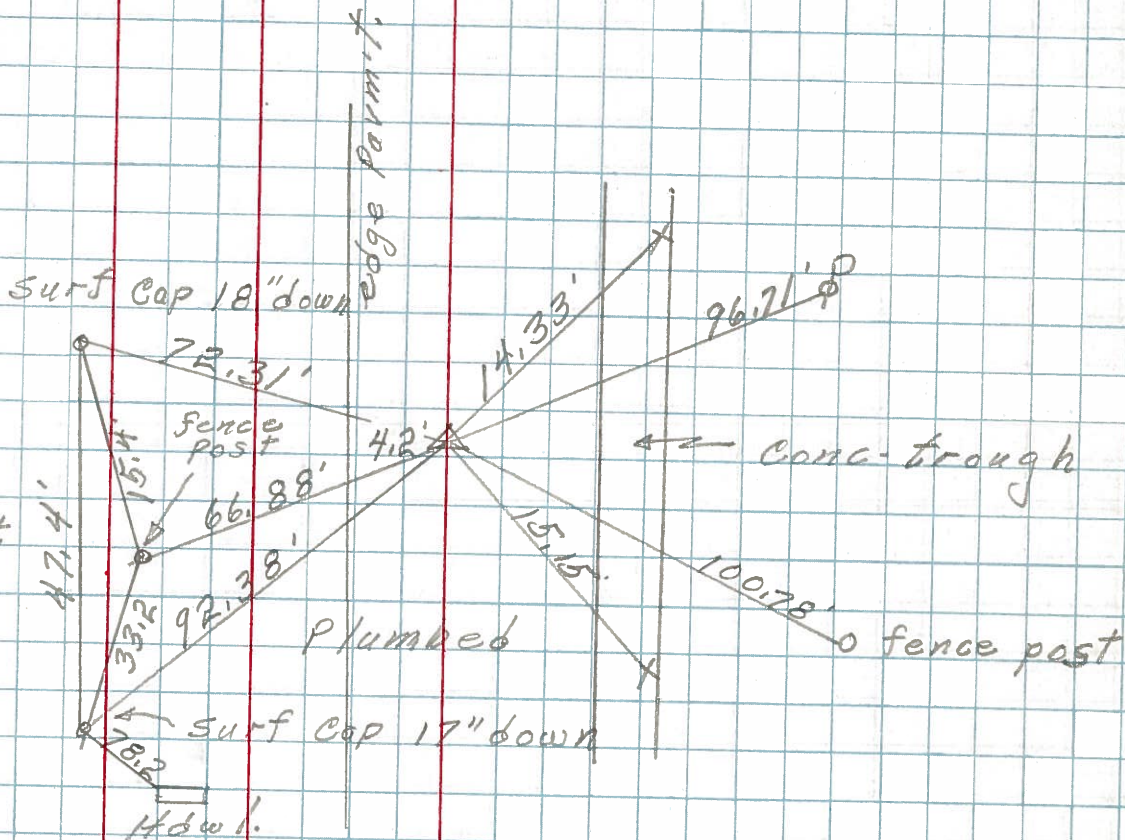
DESCRIPTION Washington Twp.

JOB NO.

LEFT CENTER LINE RIGHT

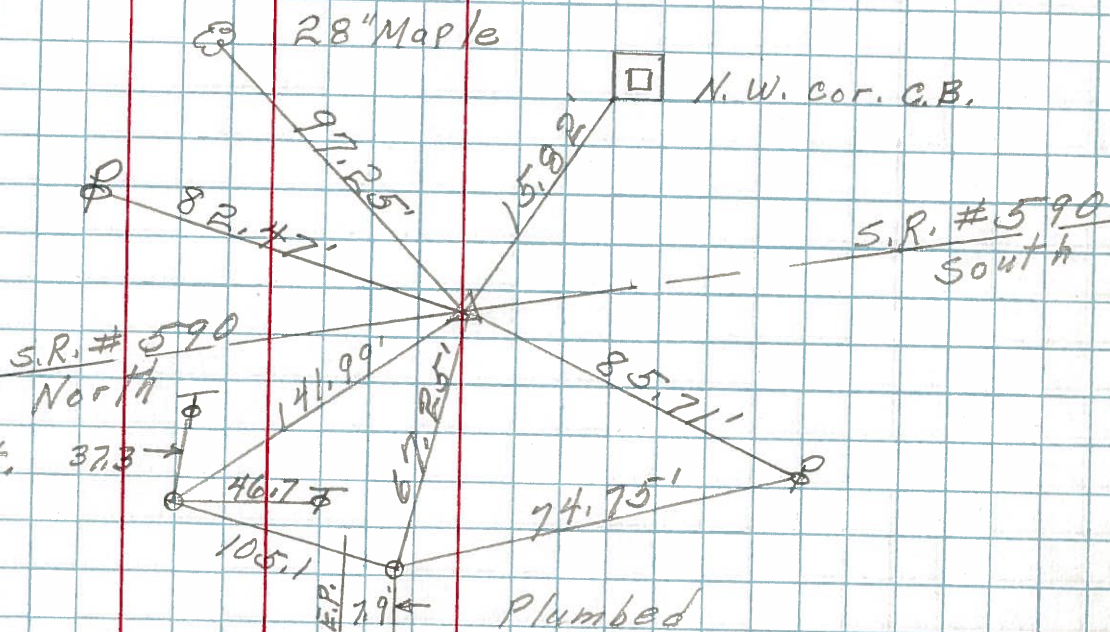
25

P.I.  
92+83.27  
Iron bolt  
 $\Delta = 0^\circ 01.3' Lt.$



24

P.I.  
63+14.35  
R.R. spk.  
on top  
 $\Delta = 0^\circ 10.3' Lt.$



1946 Plan

PERSONNEL TITLE PERSONNEL TITLE

COUNTY Sandusky DATE Dec-1967

MOSSER

BARBOUR

Redding

Potts

S. R. U.S. # 20

WEATHER

SEC. S.R. # 199 - EAST TEMP.

DESCRIPTION Ties for Control Points

LEFT

CENTER LINE

RIGHT

JOB NO.

