

O.D.O.T. DISTRICT 2 SURVEY OFFICE (USE ONLY)

PERSONNEL

REFERENCE NO. 26

SHEET 29 OF 32

NOTES RHOADES

DATE 8/9/23

ROUTE US 20

H.C. AUBLE

WEATHER SUNNY

COUNTY SANDUSKY

R.C. NIESE

TEMP. 79°

TOWNSHIP WASHINGTON

ASTON

SECTION 14

DWG BY RHOADES PID 110021

T 5 N R 14 E

TYPE MONUMENT MAG/WASHER

ON SURFACE - ~~BELOW~~ ON

OFFSET Q PAVEMENT 16.3' LT : ~~RT~~

4.0' TO S EDGE OF BERM

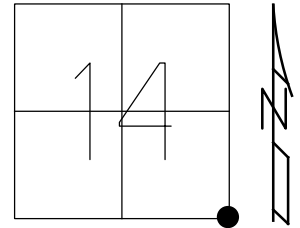
STATION: 662+41

HORZ.DATUM: NAD83 2011

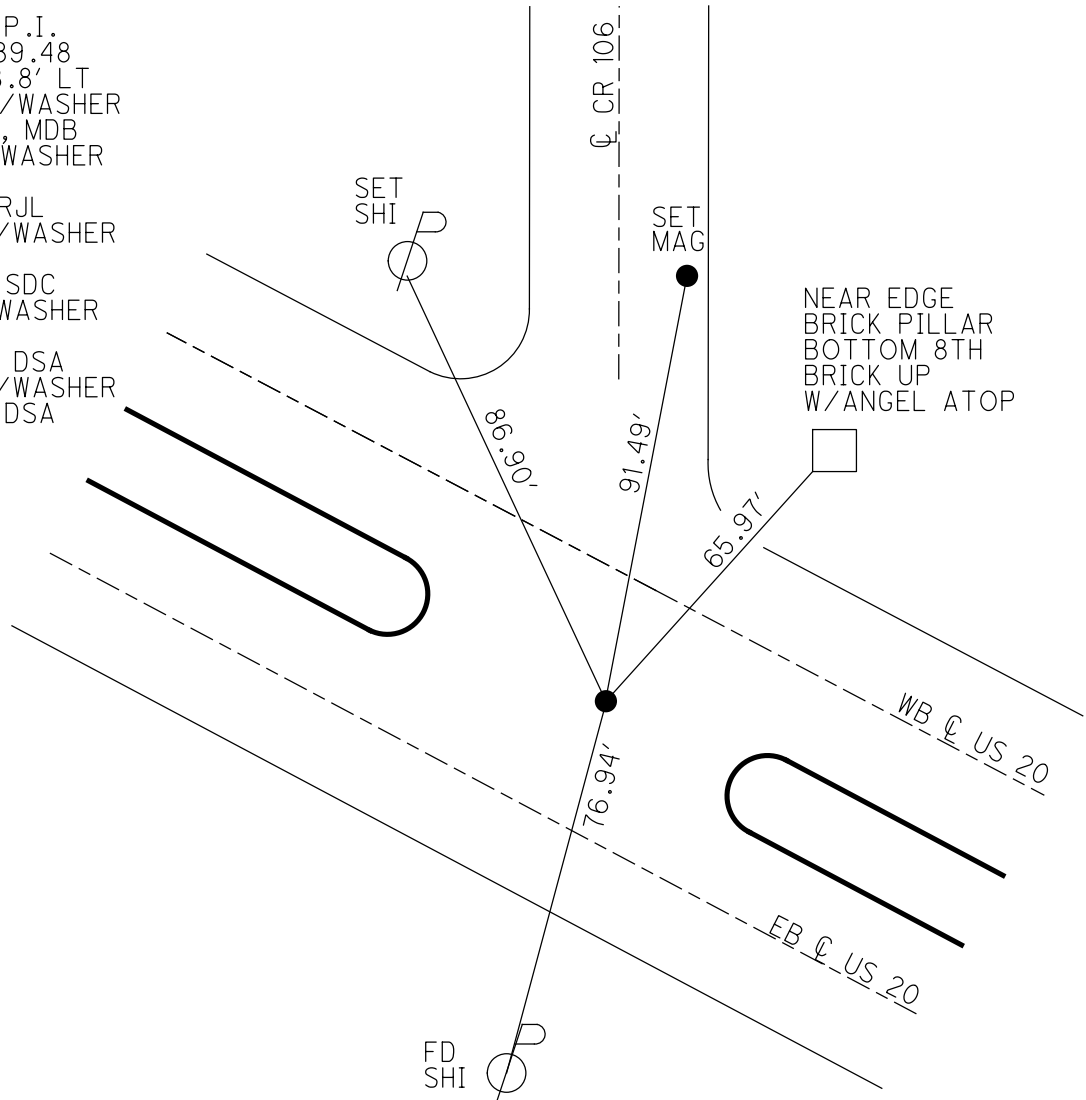
GEOID: NAVD88 2018

GRID: NORTHING: 626739.036

EASTING: 1775552.622



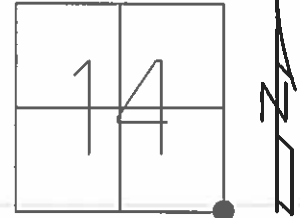
RECORD: P.I.
 STA.121+89.48
 $\Delta = 0^\circ 08.8' \text{ LT}$
 SET P.K./WASHER
 6/29/00, MDB
 FD P.K./WASHER
 REF 26
 7/12/11, RJL
 SET MAG/WASHER
 FINREF26
 8/21/13, SDC
 FD MAG/WASHER
 REF26
 3/14/23, DSA
 SET MAG/WASHER
 8/9/23, DSA



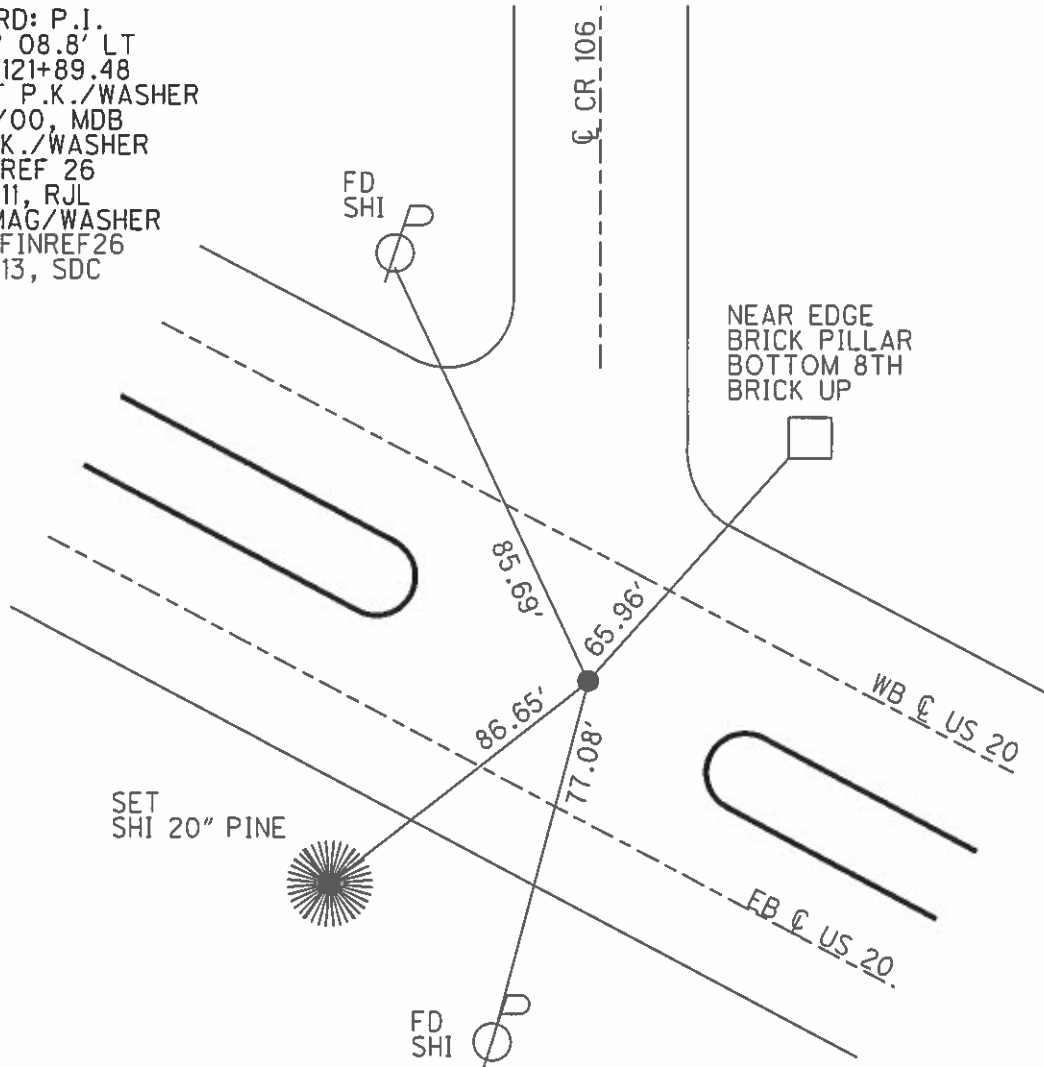
O.D.O.T. DISTRICT 2 SURVEY OFFICE (USE ONLY)

PERSONNEL _____ REFERENCE NO. 26 SHEET 30 OF 33
 NOTES CODER _____ DATE 8/21/13 ROUTE US 20
 H.C. ROUSOS _____ WEATHER CLEAR COUNTY SANDUSKY
 R.C. WESTFALL _____ TEMP. 80° TOWNSHIP WASHINGTON
 _____ SECTION 14
 _____ T 5 N R 14 E

TYPE MONUMENT P.K./WASHER
 ON SURFACE - ~~BELOW~~ ON _____
 LEFT - CL PAV'T - ~~RIGHT~~ 16.3' S. OF CL WB LANE
4.0' TO S EDGE PAVEMENT
 S.L.M. 662+41
 GRID: NORTHING: 626739.112 EASTING: 1775552.536



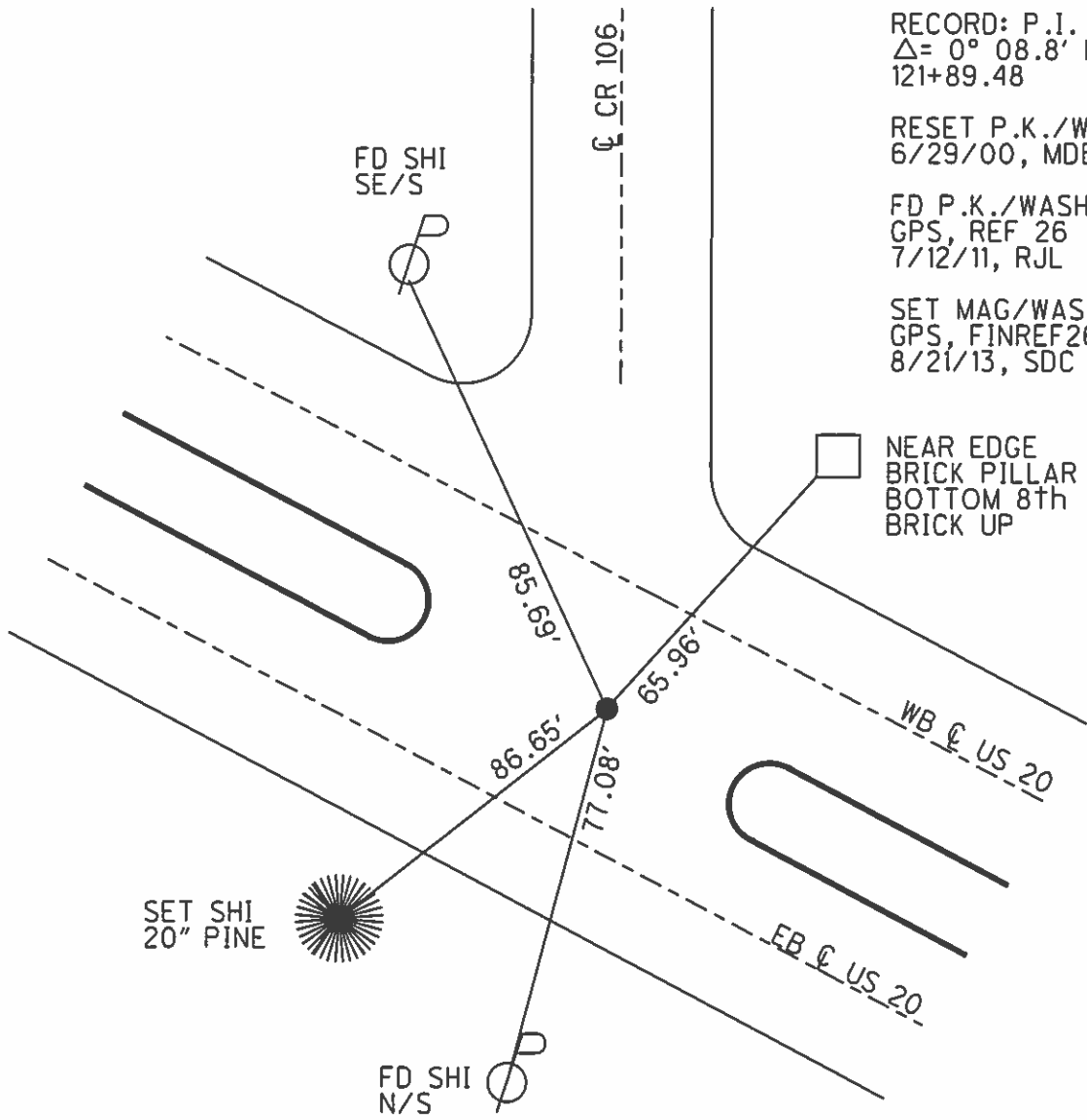
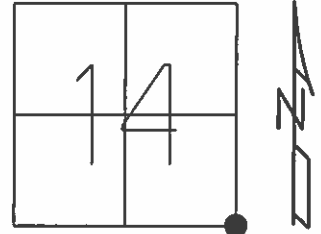
RECORD: P.I.
 $\Delta = 0^\circ 08.8' \text{ LT}$
 STA. 121+89.48
 RESET P.K./WASHER
 6/29/00, MDB
 FD P.K./WASHER
 GPS, REF 26
 7/12/11, RJL
 SET MAG/WASHER
 GPS, FINREF26
 8/21/13, SDC



O.D.O.T. DISTRICT 2 SURVEY OFFICE

PERSONNEL	REFERENCE NO. <u>26</u>	SHEET <u>30</u> OF <u>33</u>
NOTES	DATE <u>8/21/13</u>	ROUTE <u>US 20</u>
H.C. <u>ROUSOS</u>	WEATHER <u>CLEAR</u>	COUNTY <u>SANDUSKY</u>
R.C. <u>WESTFALL</u>	TEMP. <u>80°</u>	TOWNSHIP <u>WASHINGTON</u>
		SECTION <u>14</u>
		T <u>5</u> N R <u>14</u> E

TYPE MONUMENT P.K./WASHER
 ON SURFACE - ~~BELOW~~ ON _____
 LEFT - ☉ PAV'T - ~~RIGHT~~ 16.3' S.OF ☉WB LANE
4.0' TO S EDGE PAVEMENT
 S.L.M. 662+41
 Grid: Northing: 626739.112 Easting: 1775552.536



RECORD: P.I.
 $\Delta = 0^\circ 08.8' \text{ LT}$
 121+89.48

RESET P.K./WASHER
 6/29/00, MDB

FD P.K./WASHER
 GPS, REF 26
 7/12/11, RJL

SET MAG/WASHER
 GPS, FINREF26
 8/21/13, SDC

NEAR EDGE
 BRICK PILLAR
 BOTTOM 8th
 BRICK UP

County Sandusky S.R. 05#20

Date 11 April 83

Township Washington

Weather Cloudy

Section 14

Temp. 44°

T N, R E

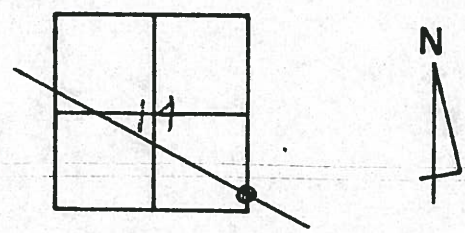
Personnel J. Stone

P. Neuser

R. Michalak

D. Curtis

26



CHENEY
BARBOUR
RIPPLE
GEYMAN

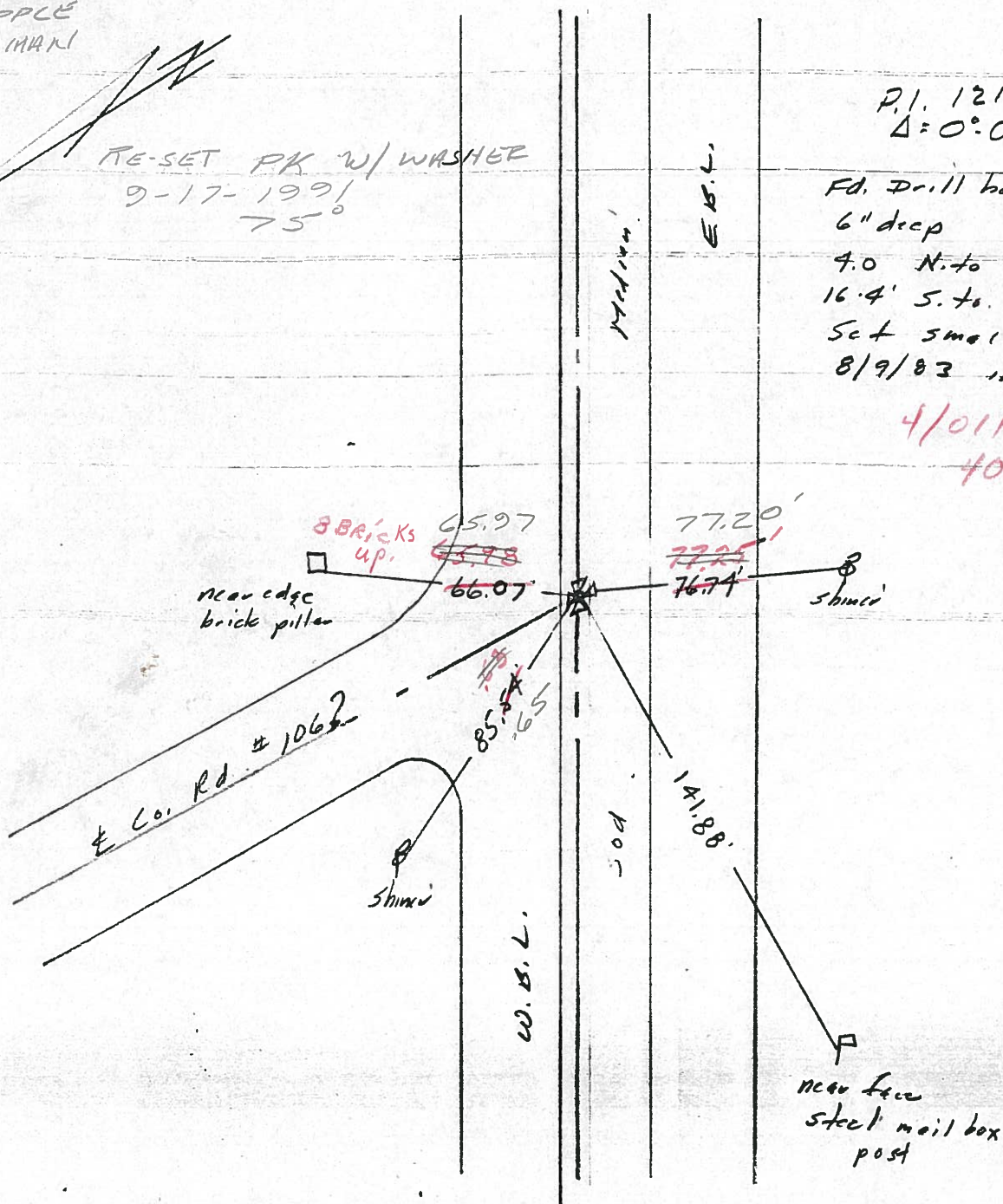
REF. No. 26

RE-SET PK W/ WASHER
9-17-1991
75°

P.I. 121+89.48
Δ = 0° 08.8 Lt.

Fd. Drill hole in brick
6" deep
4.0 N. to S. edge W.B.L.
16.4' S. to N. edge E.B.L.
Set small RR spike
8/9/83 JRS

4/01/91
40°



Q.D.O.T. DISTRICT 2 SURVEY OFFICE

SHEET 16 OF

County Sandusky S.R. 05#20

Date 11 April 83

Township Washington

Weather Cloudy

Section 14

Temp. 44°

T.N, R.E

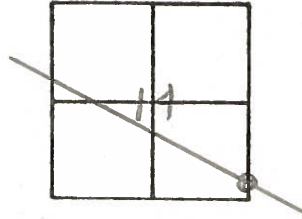
Personnel J. Stone

P. Neuser

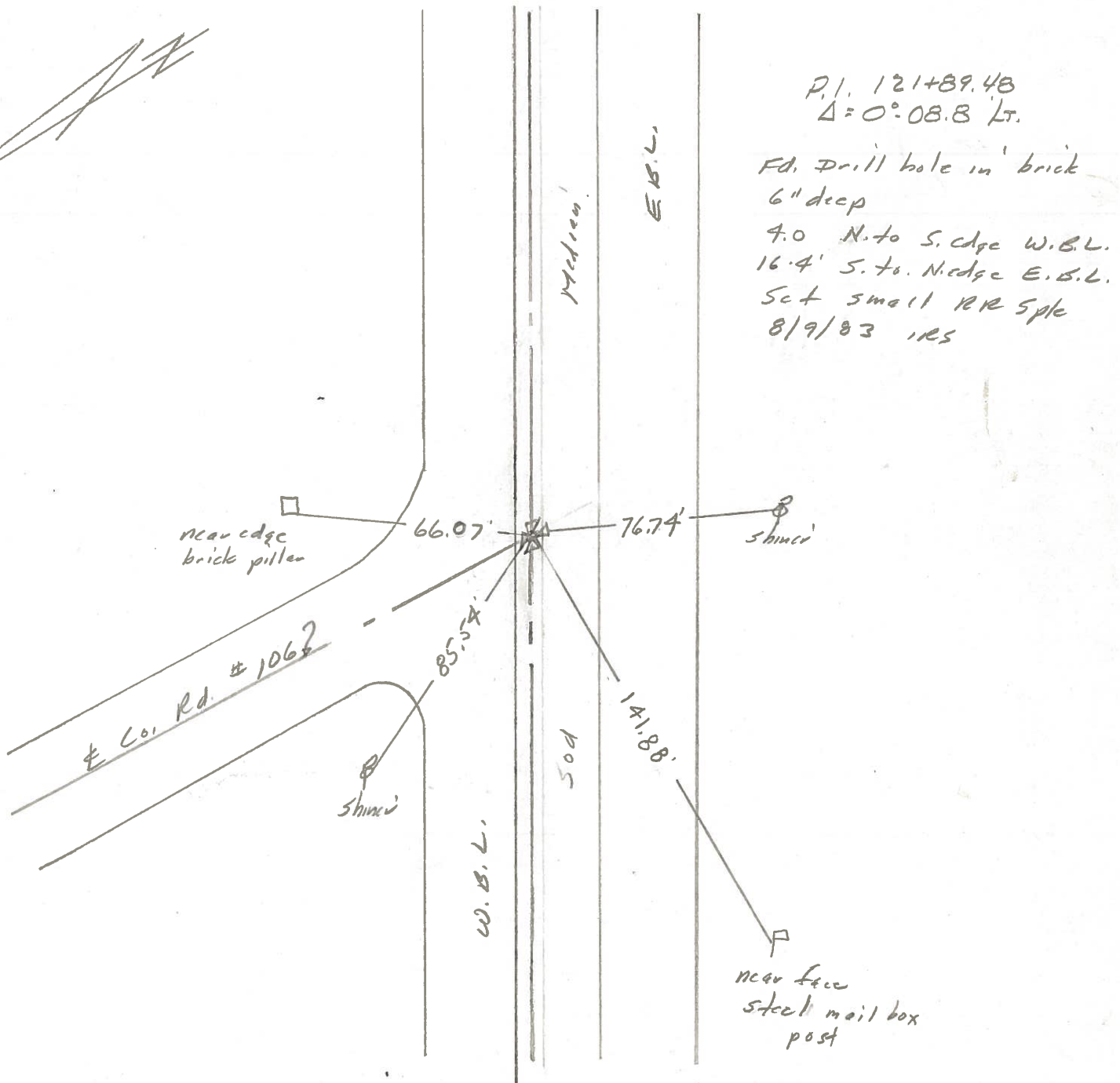
R. Michalak

D. Curtis

26



REF. No. 26



P.I. 121+89.48
 $\Delta = 0^{\circ}08.8$ Lt.

Fd. Drill hole in brick
6" deep
4.0 N. to S. edge W.B.L.
16.4' S. to N. edge E.B.L.
Set small RR Sple
8/9/83 res

PERSONNEL TITLE PERSONNEL TITLE

COUNTY Sandusky DATE 8-20-73

S. R. 20 WEATHER Fair

SEC. 24 TEMP. 80°

DESCRIPTION Washington Twp. JOB NO.

