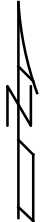
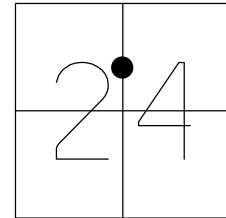


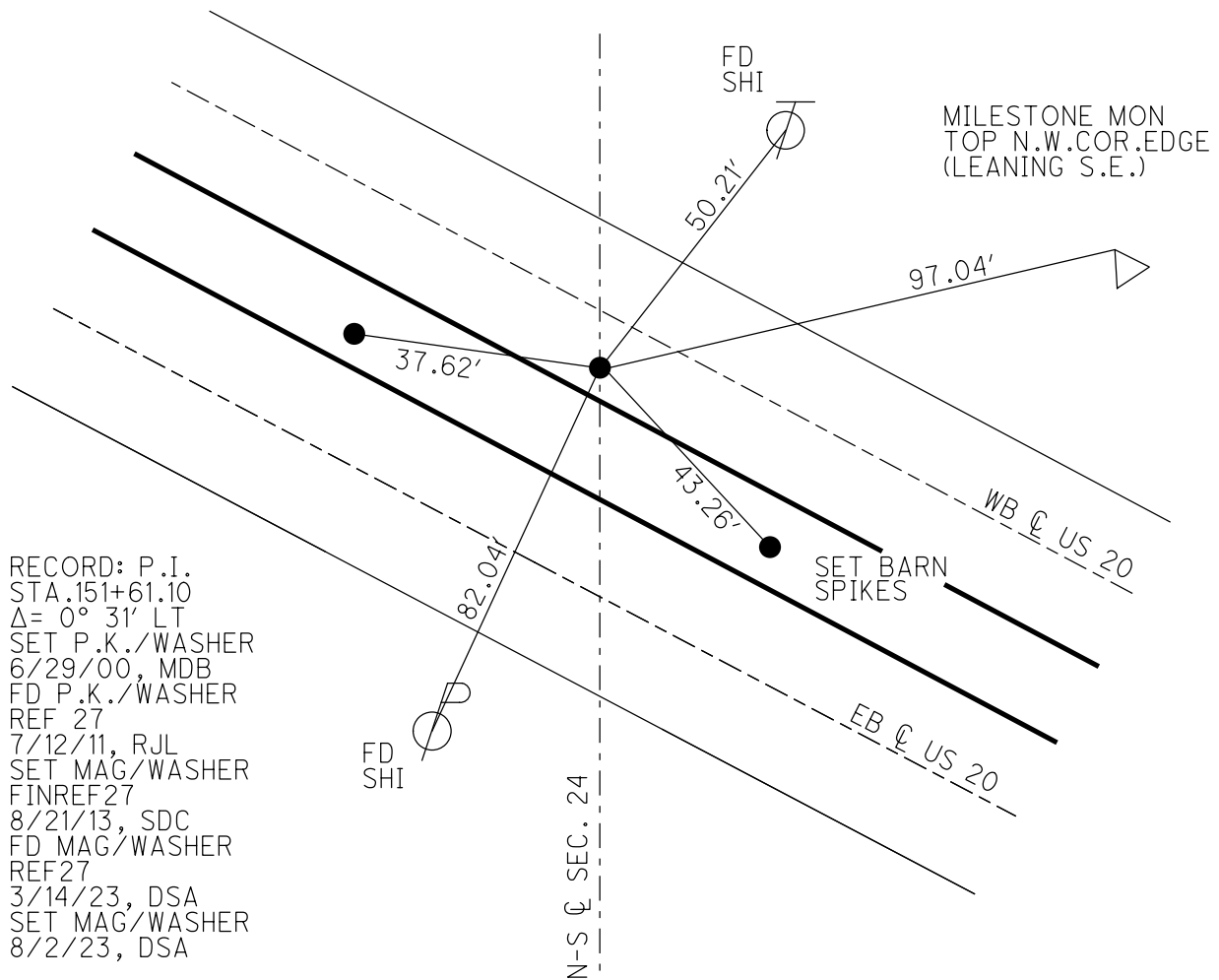
O.D.O.T. DISTRICT 2 SURVEY OFFICE (USE ONLY)

PERSONNEL _____ REFERENCE NO. 27 SHEET 30 OF 32
 NOTES RHOADES DATE 8/2/23 ROUTE US 20
 H.C. AUBLE WEATHER SUNNY COUNTY SANDUSKY
 R.C. NIESE TEMP. 80° TOWNSHIP WASHINGTON
ASTON SECTION 24
 DWG BY RHOADES PID 110021 T 5 N R 14 E

TYPE MONUMENT MAG/WASHER
 ON SURFACE - ~~BELOW~~ ON
 OFFSET Q PAVEMENT 7.7' LT : ~~RT~~
3.8' TO S EDGE OF BERM
 STATION: 692+13



HORZ. DATUM: NAD83 2011 GEOID: NAVD88 2018
 GRID: NORTHING: 625284.864 EASTING: 1778142.587



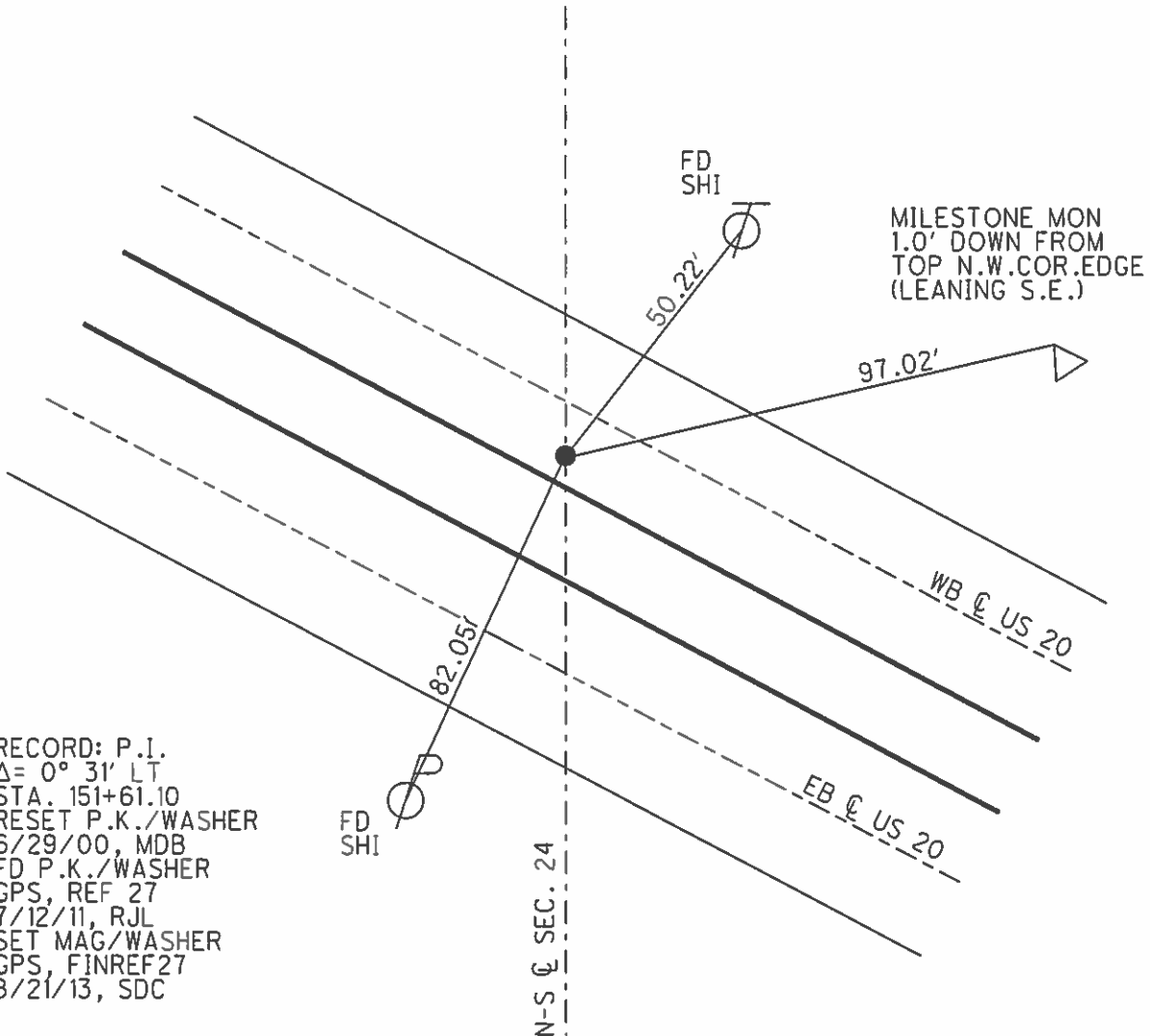
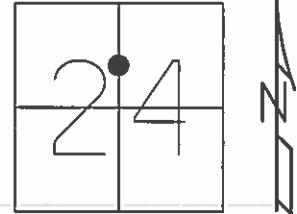
RECORD: P.I.
 STA. 151+61.10
 $\Delta = 0^\circ 31' \text{ LT}$
 SET P.K./WASHER
 6/29/00, MDB
 FD P.K./WASHER
 REF 27
 7/12/11, RJL
 SET MAG/WASHER
 FINREF 27
 8/21/13, SDC
 FD MAG/WASHER
 REF 27
 3/14/23, DSA
 SET MAG/WASHER
 8/2/23, DSA

O.D.O.T. DISTRICT 2 SURVEY OFFICE (USE ONLY)

PERSONNEL _____ REFERENCE NO. 27 SHEET 31 OF 33

NOTES	CODER _____	DATE	<u>8/21/13</u>	ROUTE	<u>US 20</u>
H.C.	<u>ROUSOS</u>	WEATHER	<u>CLEAR</u>	COUNTY	<u>SANDUSKY</u>
R.C.	<u>WESTFALL</u>	TEMP.	<u>80°</u>	TOWNSHIP	<u>WASHINGTON</u>
	_____			SECTION	<u>24</u>
	_____				<u>T 5 N R 14 E</u>

TYPE MONUMENT MAG/WASHER
 ON SURFACE - ~~BELOW~~ ON
 LEFT - ☉ PAV'T - ~~RIGHT~~ 7.7' (WB LANE)
3.8' TO S EDGE PAVEMENT
 S.L.M. 692+13
 GRID: NORTHING: 625284.970 EASTING: 1778142.552

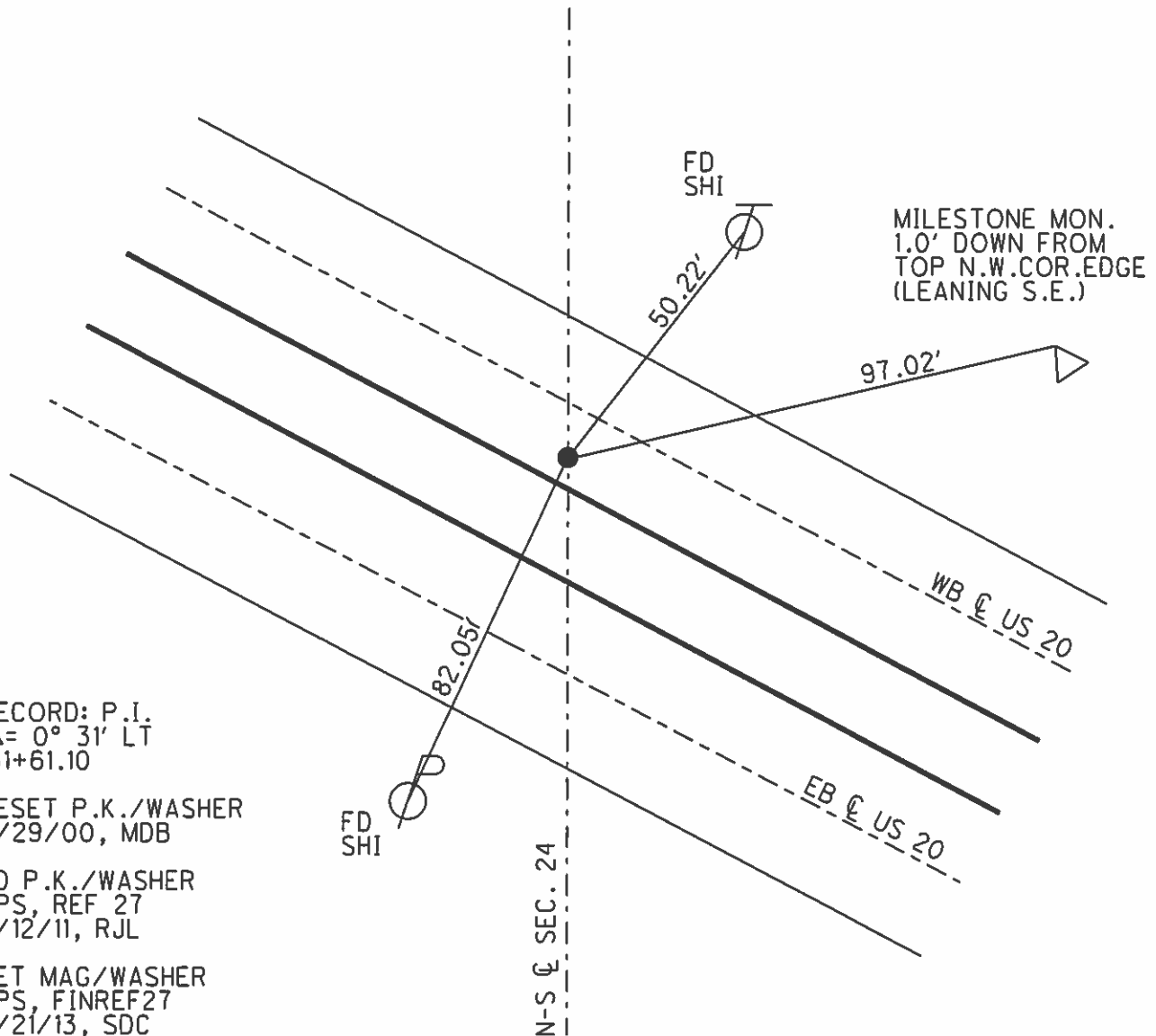
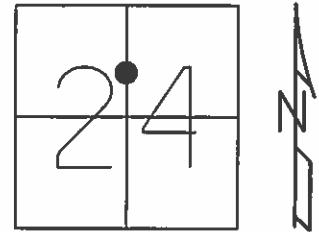


RECORD: P.I.
 $\Delta = 0^\circ 31' \text{ LT}$
 STA. 151+61.10
 RESET P.K./WASHER
 6/29/00, MDB
 FD P.K./WASHER
 GPS, REF 27
 7/12/11, RJL
 SET MAG/WASHER
 GPS, FINREF27
 8/21/13, SDC

O.D.O.T. DISTRICT 2 SURVEY OFFICE

PERSONNEL	REFERENCE NO. <u>27</u>	SHEET <u>31</u> OF <u>33</u>
NOTES <u>CODER</u>	DATE <u>8/21/13</u>	ROUTE <u>US 20</u>
H.C. <u>ROUSOS</u>	WEATHER <u>CLEAR</u>	COUNTY <u>SANDUSKY</u>
R.C. <u>WESTFALL</u>	TEMP. <u>80°</u>	TOWNSHIP <u>WASHINGTON</u>
		SECTION <u>24</u>
		T <u>5</u> N R <u>14</u> E

TYPE MONUMENT MAG/WASHER
 ON SURFACE - ~~BELOW~~ ON
 LEFT - ☉ PAV'T - ~~RIGHT~~ 7.7' (WB LANE)
3.8' TO S EDGE PAVEMENT
 S.L.M. 692+13
 Grid: Northing: 625284.970 Easting: 1778142.552



RECORD: P.I.
 $\Delta = 0^\circ 31' \text{ LT}$
 151+61.10

RESET P.K./WASHER
 6/29/00, MDB

FD P.K./WASHER
 GPS, REF 27
 7/12/11, RJL

SET MAG/WASHER
 GPS, FINREF27
 8/21/13, SDC

County Sandusky S.R. 05#20

Date 12 April 83

Township Washington

Weather Sunny

Section 24

Temp. 43°

T N, R E

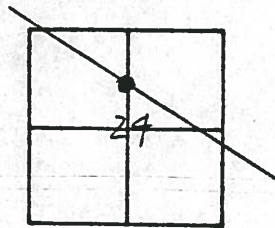
Personnel I. Stone

P. Neusse

R. Michalek

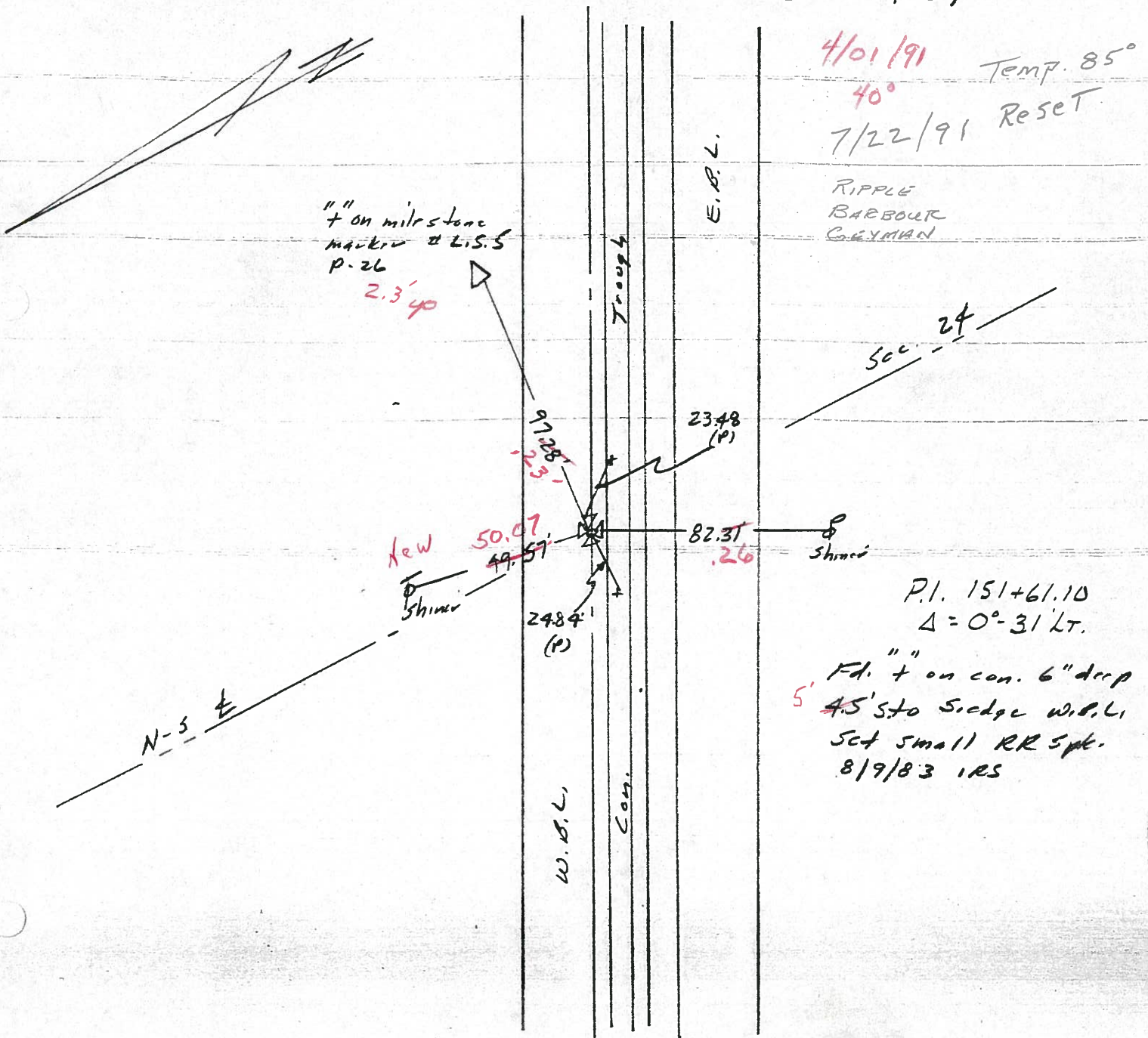
D. Curtis

(27)



692+13

REF. NO. 27



OD.O.T. DISTRICT 2 SURVEY OFFICE

SHEET 17 OF

County Sandusky S.R. US#20

Date 12 April 83

Township Washington

Weather Sunny

Section 24

Temp. 43°

T_N, R_E

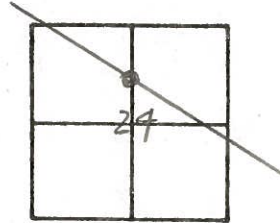
Personnel I. Stone

P. Neuse

R. Michalake

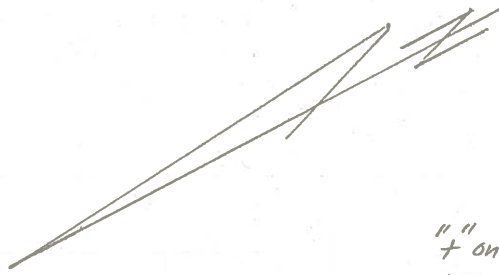
D. Curtis

27

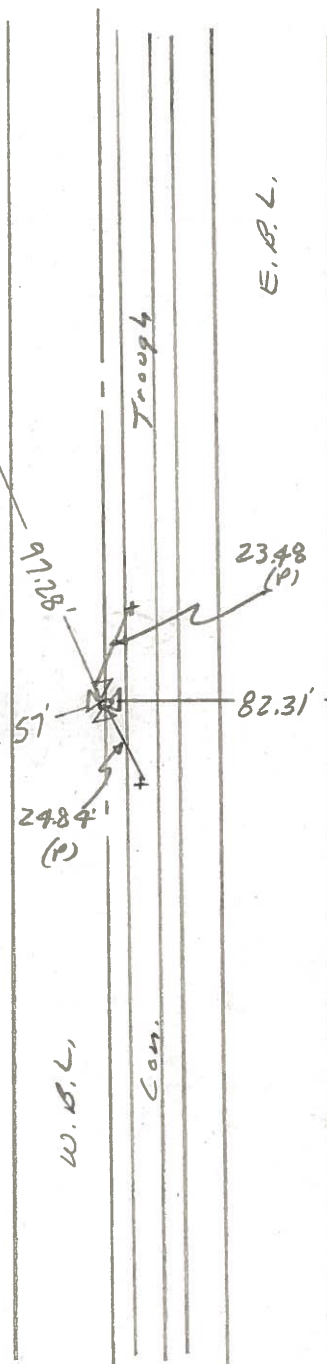


692+13

REF. NO. 27



" " on milestone
marker # L.S. 5
P-26



Sec. 24

P.I. 151+61.10
 $\Delta = 0^\circ - 31' LT.$

Fd. " " on con. 6" deep
4.5' to bridge w/ B.L.
Set small RR Spkr.
8/9/83 IRS

PERSONNEL	TITLE	PERSONNEL	TITLE	COUNTY	Sandusky	DATE	8-20-73
				S. R.	20	WEATHER	Fair
				SEC.	24	TEMP.	80°
DESCRIPTION				Washington Twp.		JOB NO.	

