

O.D.O.T. DISTRICT 2 SURVEY OFFICE (USE ONLY)

PERSONNEL

REFERENCE NO. 30

SHEET 1 OF 6

NOTES SCHNEIDER  
 H.C. MOSSER  
 R.C. BARBOUR  
GEYMAN

DATE 8/21/73  
 WEATHER FAIR  
 TEMP. 70°

ROUTE US 20  
 COUNTY SANDUSKY  
 TOWNSHIP SANDUSKY  
 SECTION 30  
 T 5 N R 15 E

DWG BY NIESE PID \_\_\_\_\_

TYPE MONUMENT 1" IPIN

~~ON SURFACE~~ - BELOW 5"

OFFSET ☉ PAVEMENT 14.95' LT : ~~RT~~  
- TO - EDGE PAVEMENT

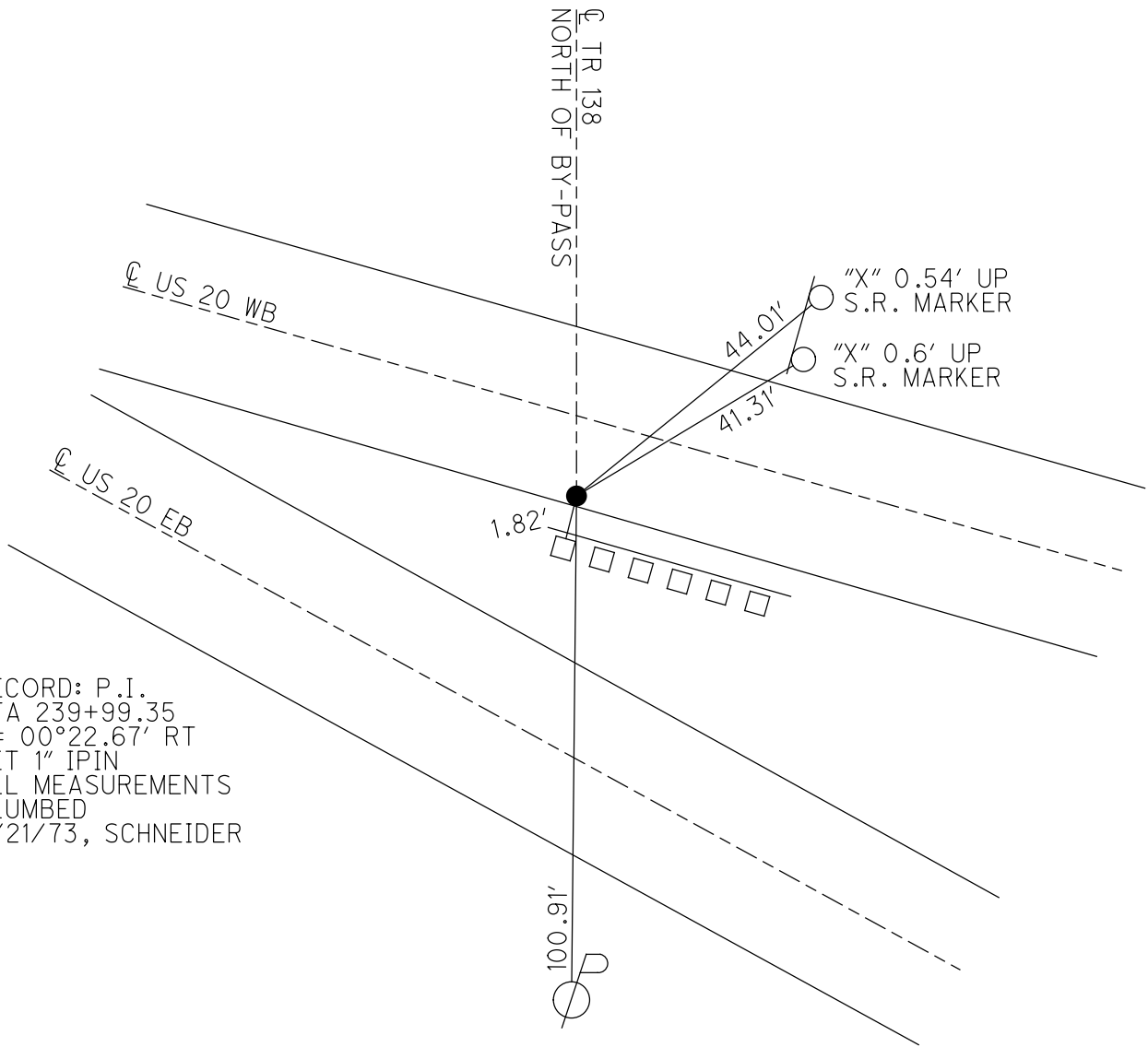
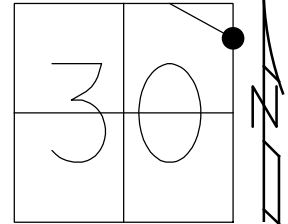
STATION: 780+51

HORZ. DATUM: \_\_\_\_\_

GEOID: \_\_\_\_\_

GRID: NORTHING: \_\_\_\_\_

EASTING: \_\_\_\_\_



RECORD: P.I.  
 STA 239+99.35  
 $\Delta = 00^\circ 22.67'$  RT  
 SET 1" IPIN  
 ALL MEASUREMENTS  
 PLUMBED  
 8/21/73, SCHNEIDER

PERSONNEL TITLE PERSONNEL TITLE

COUNTY Sandusky DATE 8-21-73

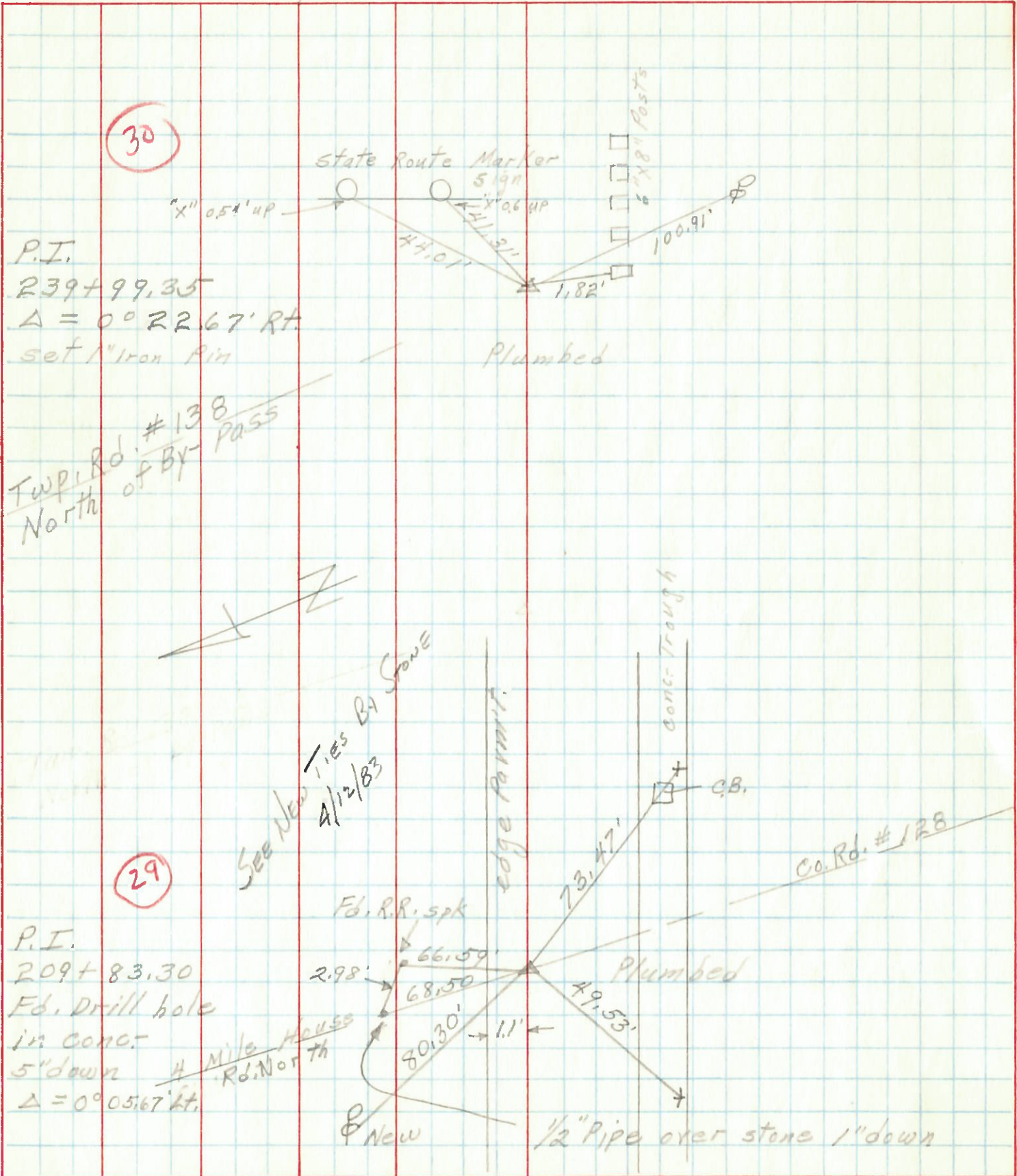
S. R. 20 WEATHER Fair

SEC. 19 TEMP. 70°

DESCRIPTION Sandusky Twp.

JOB NO. \_\_\_\_\_

LEFT CENTER LINE RIGHT



P.I.  
239+99.35  
 $\Delta = 0^\circ 22.67' \text{ Rt.}$   
set 1" Iron Pin

Plumbed

~~Twp. Rd. #138  
North of By-pass~~

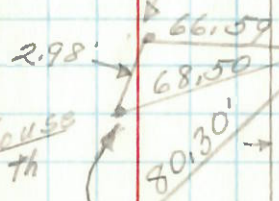


See New TIES BY STONE  
4/12/83

29

P.I.  
209+83.30  
Ed. Drill hole  
in conc.  
5" down  
1/4 Mile House  
Rd. North  
 $\Delta = 0^\circ 05.67' \text{ Lt.}$

Ed. R.R. spt



Plumbed

1/2" Pipe over stone 1" down

Co. Rd. #128