

O.D.O.T. DISTRICT 2 SURVEY OFFICE (USE ONLY)

PERSONNEL

REFERENCE NO. 32

SHEET 3 OF 6

NOTES SCHNEIDER

DATE 8/21/73

ROUTE US 20

H.C. MOSSER

WEATHER COOL

COUNTY SANDUSKY

R.C. BARBOUR

TEMP. 72°

TOWNSHIP SANDUSKY

GEYMAN

SECTION 29

DWG BY NIESE PID _____

T 5 N R 15 E

TYPE MONUMENT 1/2" PIPE

ON SURFACE - ~~BELOW~~ ON

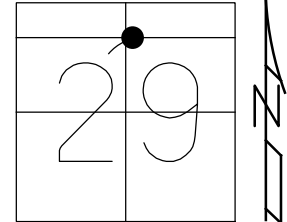
OFFSET 0 PAVEMENT _____ LT : RT

- TO - EDGE PAVEMENT

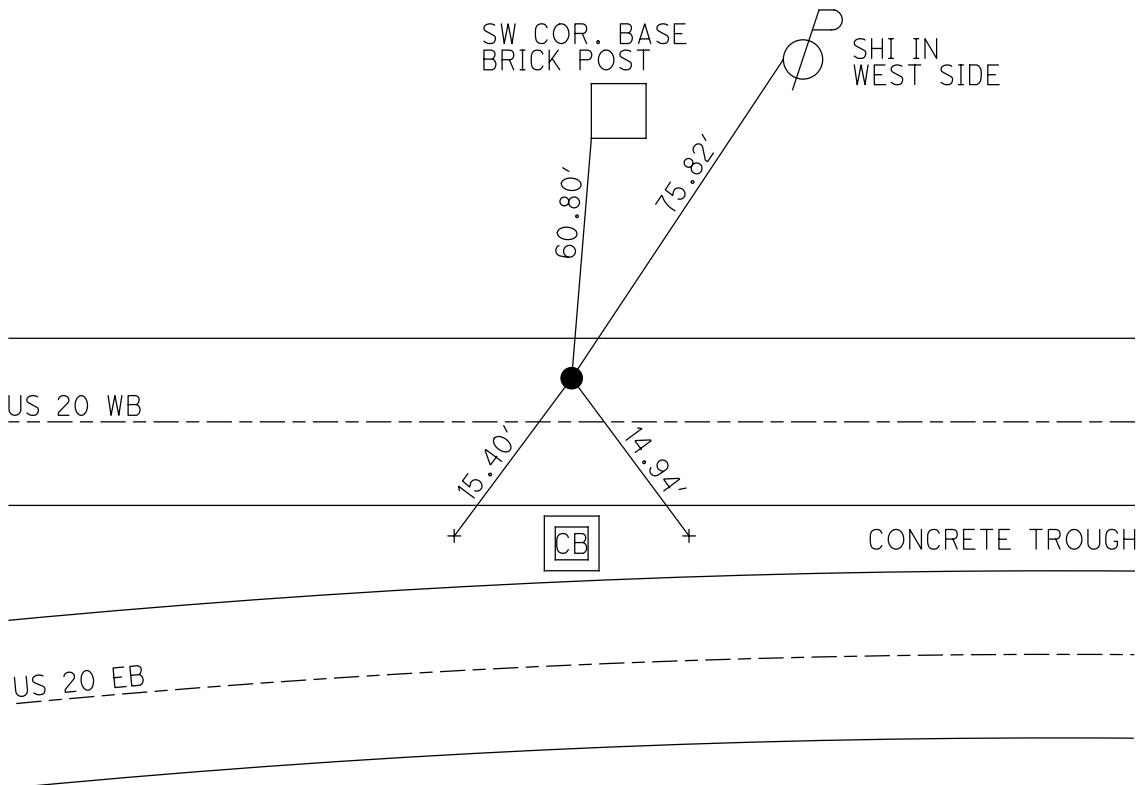
STATION: 811+11

HORIZ.DATUM: _____ GEOID: _____

GRID: NORTHING: _____ EASTING: _____



RECORD: P.I.
 STA 270+59.55
 $\Delta = 0^{\circ}04' RT$
 FD 1/2" IPIPE
 8/21/73, SCHNEIDER



PERSONNEL TITLE PERSONNEL TITLE

Schneider
Mossler
Barbour
Geyman

COUNTY Sandusky
S. R. 20
SEC. 29

DATE 8-21-73
WEATHER cool
TEMP. 72°

DESCRIPTION Sandusky Twp.

LEFT CENTER LINE RIGHT

JOB NO.

