

O.D.O.T. DISTRICT 2 SURVEY OFFICE (USE ONLY)

PERSONNEL

REFERENCE NO. 37

SHEET 1 OF 19

NOTES LEU

DATE 5/27/20

ROUTE US 20

H.C. LEU

WEATHER CLOUDY

COUNTY SANDUSKY

R.C. AUBLE

TEMP. 76°

TOWNSHIP GREEN CREEK

RHOADES

DWG BY NIESE PID 102898

SECTION 6

T 4 N R 16 E

TYPE MONUMENT 5/8" IPIN

~~ON SURFACE~~ - BELOW 4"

OFFSET Q PAVEMENT ON LT : RT

- TO - EDGE PAVEMENT

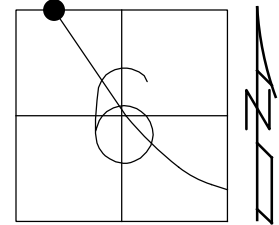
STATION: 1099+95.43

HORIZ.DATUM: NAD83(2011)

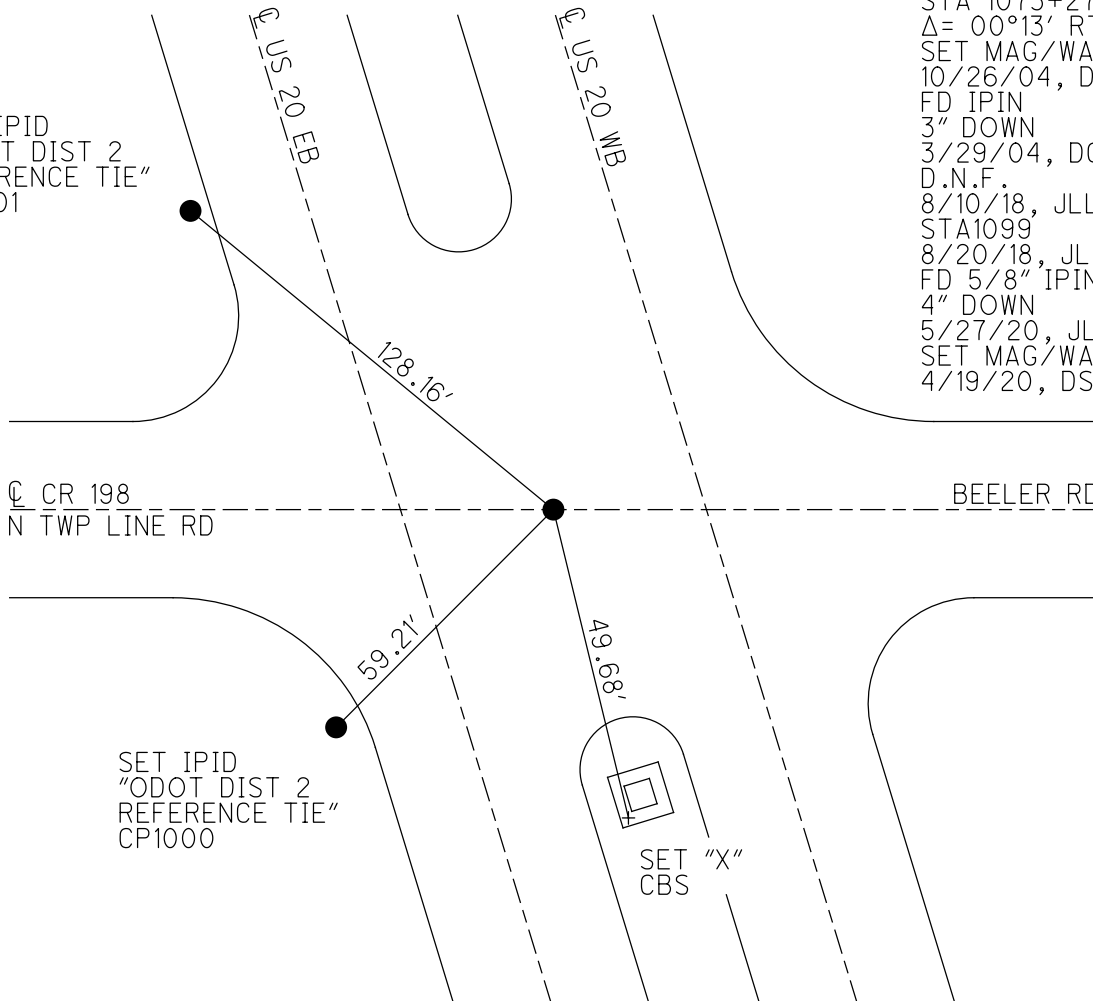
GEOID: NAVD88 2012A

GRID: NORTHING: 610747.743

EASTING: 1813168.780



SET IPIN
"ODOT DIST 2
REFERENCE TIE"
CP1001



RECORD:
STA 1073+27.83
Δ= 00°13' RT
SET MAG/WASHER
10/26/04, DCH
FD IPIN
3" DOWN
3/29/04, DCH
D.N.F.
8/10/18, JLL
STA1099
8/20/18, JLL
FD 5/8" IPIN
4" DOWN
5/27/20, JLL
SET MAG/WASHER
4/19/20, DSA

O.D.O.T. DISTRICT 2 SURVEY OFFICE

PERSONNEL

REFERENCE NO. _____

SHEET 1 OF 4

NOTES HOMAN

DATE 3-29-04

ROUTE U.S. 20

H.C. CANTERBURY

WEATHER CLOUDY

COUNTY SANDUSKY

R.C. BARNHISEL

TEMP. 55°

TOWNSHIP GREEN CREEK

ARMS

SECTION 6

T 4 N R 16 E

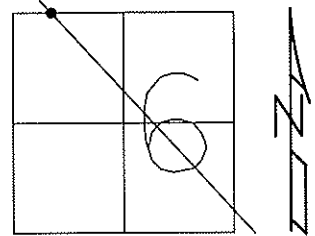
TYPE MONUMENT IRON PIN IN CONC.

~~ON SURFACE~~ - BELOW 3"

~~LEFT - C PAV'T~~ ~~RIGHT~~ ON

19.5' TO SE EDGE PAVEMENT WESTBOUND

S.L.M. 1099+77



RESET MAG NAIL
& WASHER
10-26-04
DCH

