

O.D.O.T. DISTRICT 2 SURVEY OFFICE (USE ONLY)

PERSONNEL

REFERENCE NO. 38

SHEET 6 OF 19

NOTES LEU

DATE 5/21/20

ROUTE US 20

H.C. LEU

WEATHER CLOUDY

COUNTY SANDUSKY

R.C. AUBLE

TEMP. 58°

TOWNSHIP GREEN CREEK

SECTION 6

DWG BY NIESE

PID 102898

T 4 N R 16 E

TYPE MONUMENT CMON

~~ON SURFACE~~ - BELOW 2"

OFFSET  $\varnothing$  PAVEMENT 19.2' ~~LT~~ : RT

~~TO~~ EDGE PAVEMENT

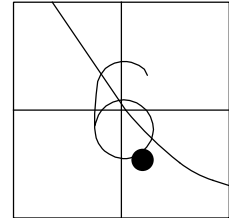
STATION: 1138+40

HORZ. DATUM: NAD83(2011)

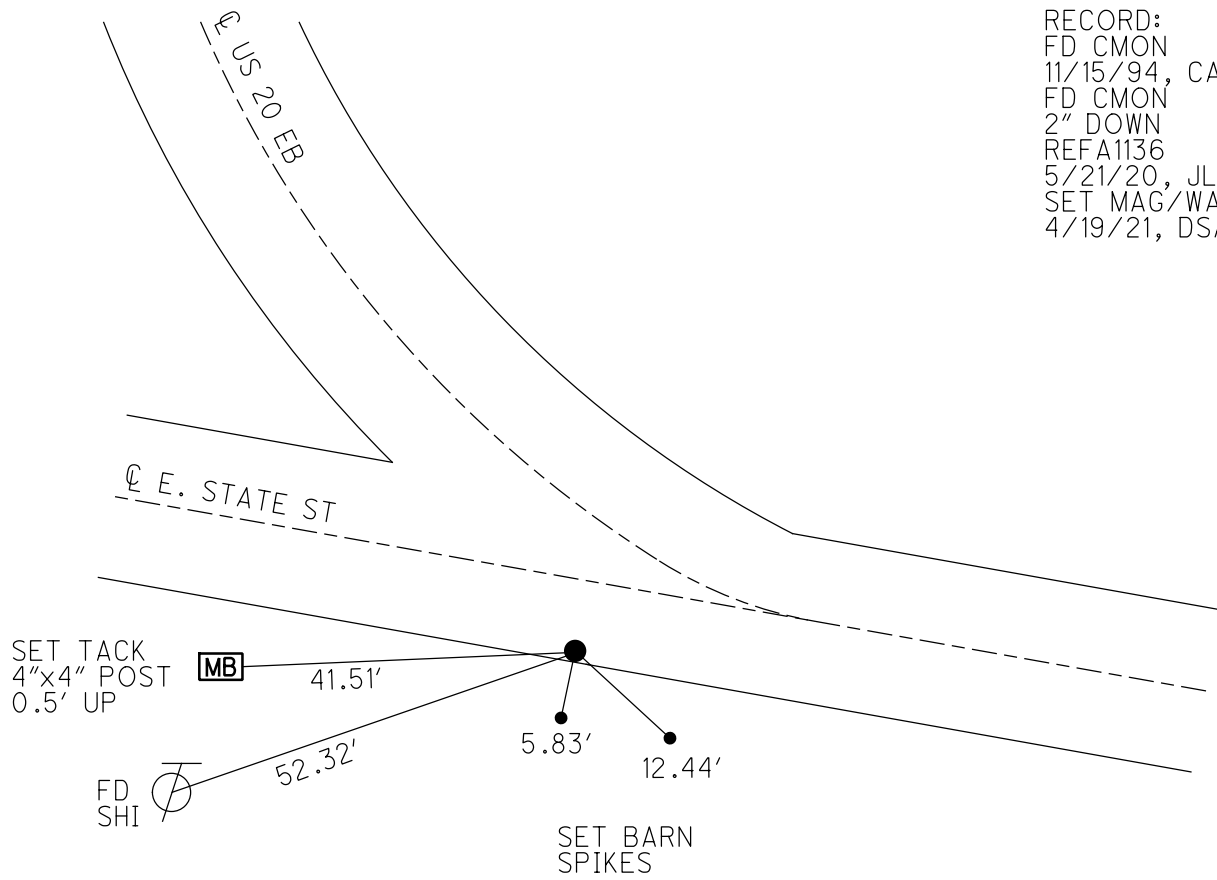
GEOID: NAVD88 2012A

GRID: NORTHING: 607457.556

EASTING: 1814943.005



RECORD:  
FD CMON  
11/15/94, CAL  
FD CMON  
2" DOWN  
REFA1136  
5/21/20, JLL  
SET MAG/WASHER  
4/19/21, DSA



O.D.O.T. DISTRICT 2 SURVEY OFFICE (USE ONLY)

PERSONNEL \_\_\_\_\_

REFERENCE NO. 39

SHEET 7 OF 19

NOTES RIPPLE

DATE 7/15/91

ROUTE US 20

H.C. BARBOUR

WEATHER SUNNY

COUNTY SANDUSKY

R.C. GEYMAN

TEMP. 85°

TOWNSHIP GREEN CREEK

SECTION 6

DWG BY NIESE PID 102898

T 4 N R 16 E

TYPE MONUMENT BOAT SPIKE

ON SURFACE - BELOW -

OFFSET  $\odot$  PAVEMENT \_\_\_\_\_ LT : RT

\_\_\_\_\_ TO \_\_\_\_\_ EDGE PAVEMENT

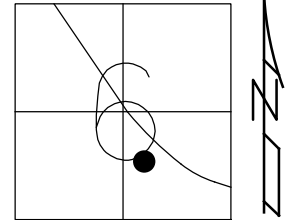
STATION: 1136+43.89

HORIZ.DATUM: NAD83 (2011)

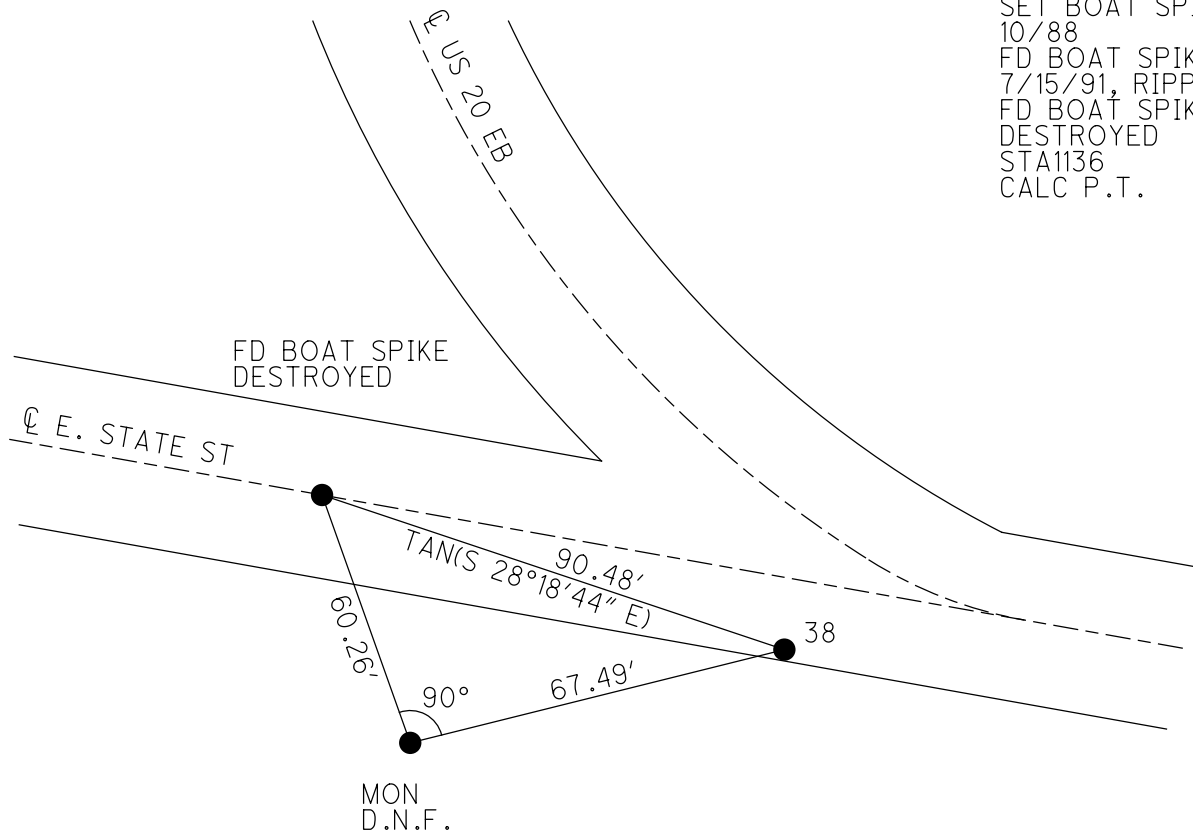
GEOID: NAVD88 2012A

GRID: NORTHING: 607536.941

EASTING: 1814900.193



RECORD:  
 SET BOAT SPIKE  
 10/88  
 FD BOAT SPIKE  
 7/15/91, RIPPLE  
 FD BOAT SPIKE  
 DESTROYED  
 STA1136  
 CALC P.T.



4-2-71

PERSONNEL TITLE PERSONNEL TITLE

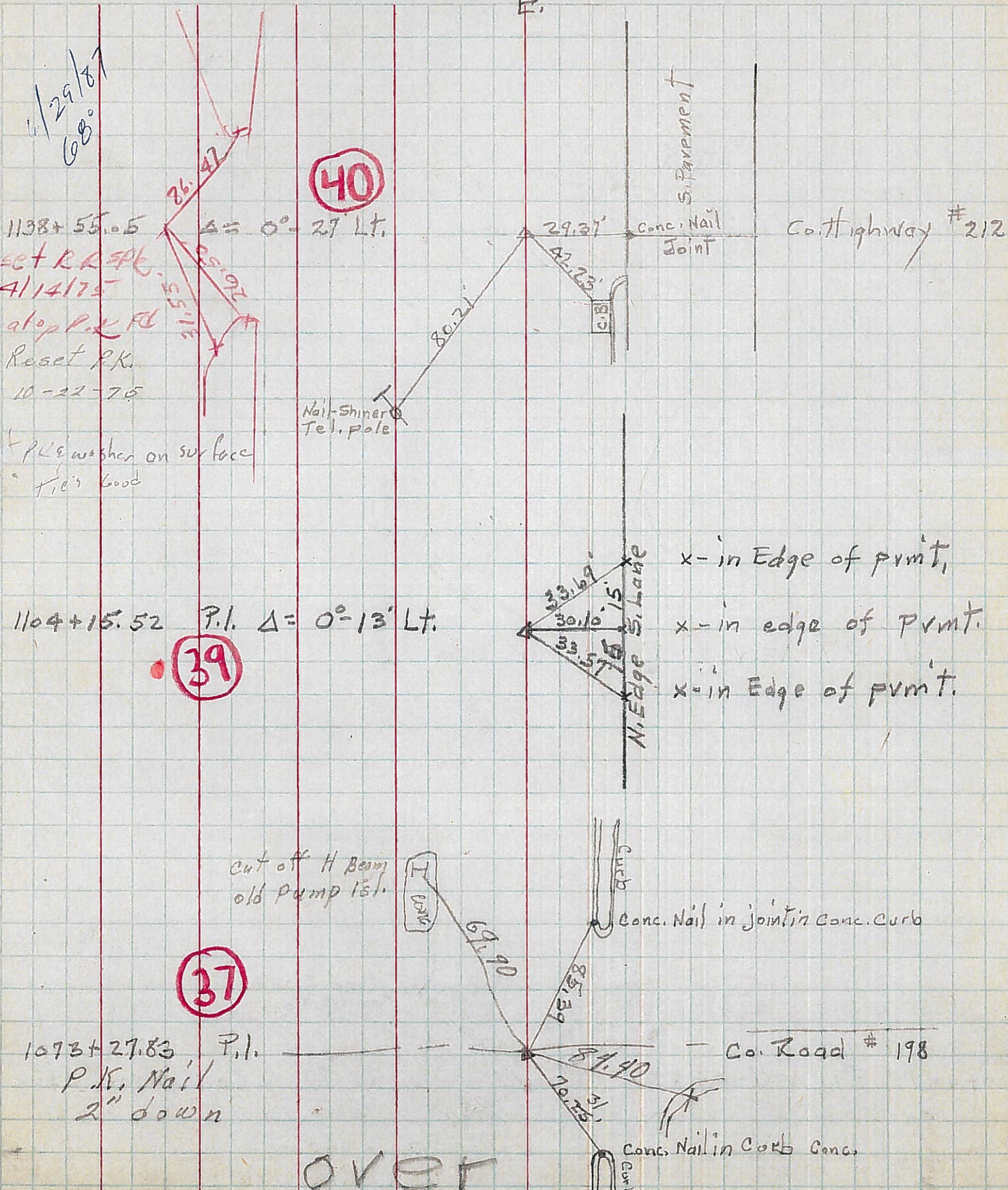
Hawk  
#1st  
Miller

COUNTY Sandusky DATE 6-1-53

S. R. US. #20 WEATHER Fair

SEC. Fremont-Clyde TEMP. 65 30°

DESCRIPTION Controll point ties LEFT CENTER LINE RIGHT JOB NO.



1/29/81  
68°

40

1138+55.05  
set R.R. spike  
4/14/75  
atop P.K. Rd  
Reset P.K.  
10-22-76

set P.K. washer on surface  
File's Good

Nail-Shiner  
Tel. pole

S. Pavement

Conc. Nail  
Joint

Co. Highway #212

1104+15.52 P.I. Δ = 0°-13' Lt.

39

x - in Edge of prvnt.  
x - in edge of prvnt.  
x - in Edge of prvnt.

Cut off H Beam  
old Pump 1st.

I bar

Curb

Conc. Nail in joint in Conc. Curb

37

1073+27.83 P.I.  
P.K. Nail  
2" down

Co. Road #198

Conc. Nail in Curb Conc.

OVER

PERSONNEL TITLE PERSONNEL TITLE

COUNTY Sandusky DATE 3-24-50

S. R. #20 WEATHER

SEC. J TEMP.

DESCRIPTION LEFT CENTER LINE RIGHT JOB NO.

